

# IROAD™



# IROAD FX2-PRO

HIGH DEFINITION VIDEO QUALITY



FRONT FHD  
REAR FHD



FRONT IMAGE SENSOR  
SONY STARVIS



HIGH DYNAMIC RANGE



HYPER/TIME LAPSE



INTELLIGENT  
NIGHT VISION



WIFI CONNECTION  
IROAD APP



BUILT IN GPS



140°  
WIDE ANGLE



ROAD SAFETY  
WARNING SYSTEM



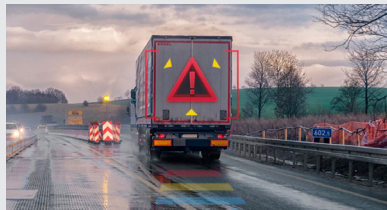
FRONT - 30FPS  
REAR - 30FPS

# ADAS Advanced Driver Assistance Systems

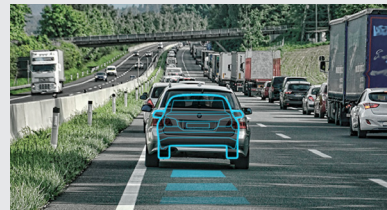
The IROAD FX series is equipped with the Road Safety Warning System that provides audio and visual alerts for Lane Departure (LDWS), Front Collision (FCWS) and Front Vehicle Departure (FVDW). It detects road markings and gives voice warnings to the drivers if the vehicle begins to stray from its lane or when it is at risk of an imminent crash.



**LDWS**  
Lane Departure Warning System



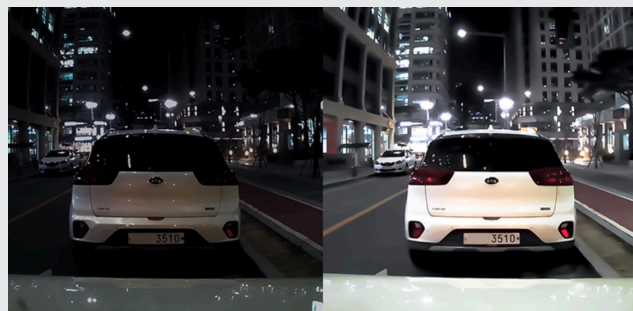
**FCWS**  
Forward Collision Warning System



**FVDW**  
Front Vehicle Departure Warning

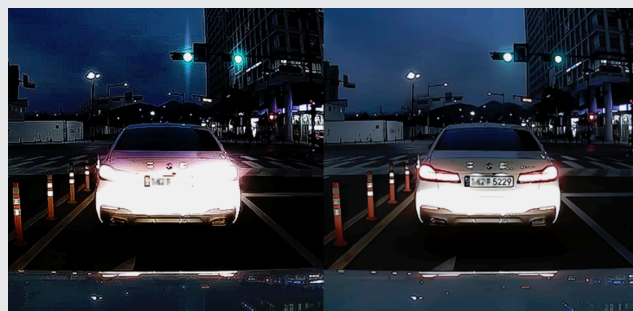
## X-VISION NIGHT VISION Nighttime Picture Quality Correction

Videos recorded by a dash cam in a low light environment such as a dark alleyway or underground parking lot can pose difficulties when you try to accurately identify information from the image. IROAD X-VISION employs the new ISP (Image Signal Processing) technology and the real-time image processing function to give brighter images when recorded under nighttime parking mode.



## AUTOMATIC EXPOSURE Light Exposure

Sudden light exposure while driving, such as strong direct sunlight or the light of oncoming vehicles at night, can sometimes affect your vision and make it difficult to assess the situation. The IROAD FX series dash cameras automatically adjust the amount of light exposure to provide bright and clear images in almost any situation.



## WI-FI CONNECTION AND IROAD APP



The FX2-PRO's built in Wi-Fi can conveniently connect automatically to the mobile app upon opening, making it simple to pair the unit with your device to review or extract footage from the camera.

Manage all settings such as ADAS, resolution, sensor, time, sound, cut off voltage and more through the app.

What's more, the latest version of the firmware is regularly updated through the server once connected.