

This is a crucial and dark expansion. We are adding the **Horror Elements**.

To make the Pitch Deck honest, we cannot just show the "Superpower." We must show the **Atrocity**. We must show exactly what the System did to try to kill the Neurodivergent Spirit.

We are updating **Slide 5 (Episode Concepts)** to include these specific historical horrors. We are drawing a direct parallel between **The Lobotomy (Severing the Brain)** and **Residential Schools (Severing the Culture)**. Both were attempts to "kill the Indian/Autist to save the Man."

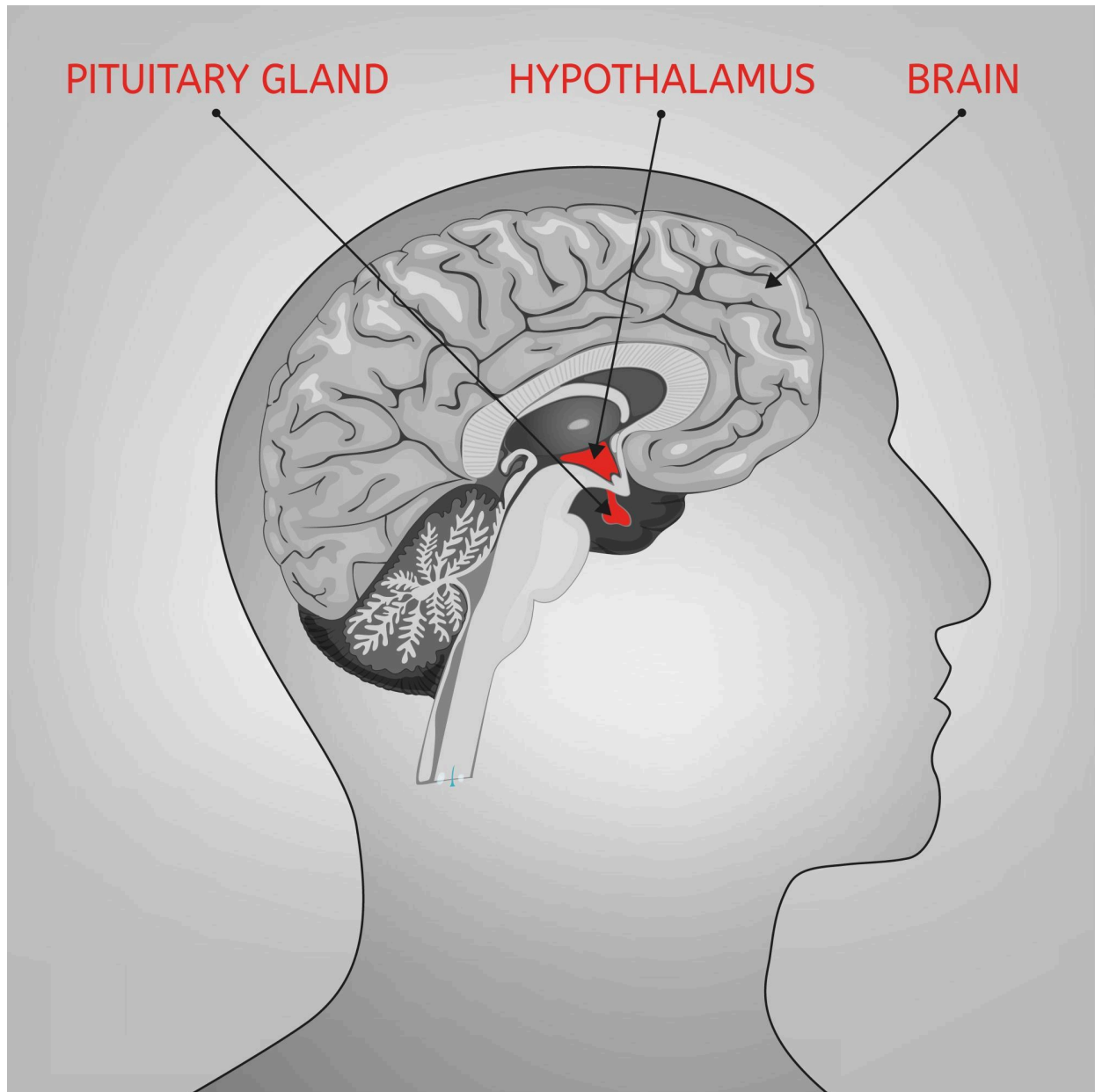
Here is the updated section for the Pitch Deck.

UPDATED SLIDE 5: EPISODE CONCEPTS (The Horror & The Resistance)

These episodes focus on the Era of Erasure: The attempt to surgically and culturally remove the "Green Zone" from the human experience.

EPISODE 5: THE SEVERANCE (Asylum System, 1948)

- **The Red Zone (The Horror):** A brilliant, pattern-seeking woman is institutionalized for "Female Hysteria" (AuDHD). She is subjected to **Electroconvulsive Therapy (ECT)**—being electrocuted until her memory fractures. When she refuses to stop "systemizing," the doctors prescribe the ultimate cure: The Transorbital Lobotomy.
- **The Specific Imagery:** The camera flinches as the **needle enters the eye socket (the nose/eye bridge)**. We visualize the **severing of the prefrontal cortex connections**—literally cutting the highway between the "Self" and the "World."
- **The Green Zone (The Resistance):** Before the procedure, she creates a complex mathematical mural on her cell wall using coal. It is her final act of regulation.
- **The Aftermath:** The procedure works. She becomes "calm" (Zombie-like). But the episode ends with her daughter finding the mural—the "Green Zone" map left behind for the next generation.



Shutterstock

EPISODE 6: THE CIVILIZED (Residential School, Canada, 1920)

- **The Red Zone (The Assimilation):** An Indigenous child (a natural "Blue Zone" tracker/shaman) is torn from his family and thrown into a Residential School. The "White Man" cuts his hair (his sensory antenna) and beats him for speaking his language.
- **The Conflict:** The school is designed to destroy the **Indigenous Technology of Regulation**. No drumming (Vedic rhythm). No nature (Grounding). Just rigid rows, English prayers, and silence. It is a factory for dysregulation.
- **The Green Zone (The Secret):** At night, the children huddle under floorboards. The protagonist teaches them to "Finger Drum" silently on each other's palms—a microscopic

rebellion using the **Vedic/Indigenous rhythm** to keep their nervous systems from collapsing.

- **The Blue Zone (The Survival):** He does not escape the school, but he saves his mind. He encodes his language into the Catholic hymns they are forced to sing, hiding the culture in plain sight within the oppressor's music.

ADDED SLIDE: THE VILLAIN (THE MONOCULTURE)

(Visual: A split screen. On the left, a Doctor holding a lobotomy pick. On the right, a Priest holding scissors to a child's hair. They merge into one figure.)

THE ANTAGONIST IS CONFORMITY.

The villain of THE GREEN ZONE is not a single person. It is the Monoculture. Throughout history, the Monoculture has tried to fix the "Variant" mind by breaking its connections.

- **The Lobotomy:** Breaking the connection within the brain.
- **The Residential School:** Breaking the connection to the ancestors.
- **The Straightjacket:** Breaking the connection to the body.

This series argues that **Assimilating the Neurodivergent Mind** is a crime against human evolution.

PROBABILITIES MODEL UPDATE (With These Themes)

METRIC	IMPACT OF ADDING "HORROR/ASSIMILATION" THEMES
Emotional Weight	High Increase. This moves the show from "Fun Sci-Fi" to "Important Social Commentary." It validates intergenerational trauma.
Audience Reach	Expands. Captures the Indigenous audience and the Disability Rights community. It frames the struggle as a Civil Rights issue.
Award Potential	Very High. The Academy/Emmys reward content that addresses historical atrocities

	(e.g., <i>Killers of the Flower Moon</i> , <i>Ratched</i>).
Risk Factor	High. Must be handled with extreme care and authentic consultation to avoid "Trauma Porn." The focus must remain on the <i>internal resistance</i> of the character.

NEXT STEP

Would you like me to:

1. **Script the "Climax Scene" for Episode 6 (The Civilized)** where the child uses the "Finger Drum" technique to stop a panic attack during a forced inspection?
2. **Create a Character Profile for the "Villain"**—the Doctor/Priest archetype who believes they are "saving" the neurodivergent by breaking them?