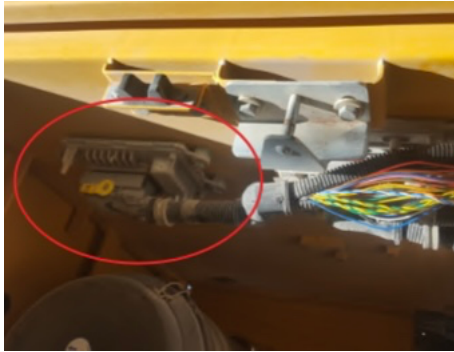




## Volvo Install

1- locate the acm controller under the hood or behind the cab, it will vary with model and size.



2- disconnect from harness and plug our deflink in place instead of acm.



3- locate scr nox sensors and disconnect both.

4- test run machine for several hours and verify that it is correctly operating normally.

5- remove dpf filter from housing it should slide out and can be reinstalled without dpf.

Note: let machine operate normally do not cancel any auto regens