

FRAMEWORKER®

ASSISTANTS FOR RETAIL AND MERCHANDISE DISPLAYS®

HARDWARE

PART A
LEVELING FOOT



2' UNIT 6 EACH
4' UNIT 4 EACH
8' UNIT 6 EACH

PART B
3 1/4" HEX DRIVE SCREW



2' UNIT 8 EACH
4' UNIT 8 EACH
8' UNIT 12 EACH

PART C
LOCK NUT



2' UNIT 16 EACH
4' UNIT 16 EACH
8' UNIT 24 EACH

PART D
FLAT WASHER



2' UNIT 16 EACH
4' UNIT 16 EACH
8' UNIT 24 EACH

PART E
2 3/4" HEX DRIVE SCREW



2' UNIT 8 EACH
4' UNIT 8 EACH
8' UNIT 12 EACH

PART F
LOCK WASHER



2' UNIT 16 EACH
4' UNIT 16 EACH
8' UNIT 24 EACH

ALLEN WRENCH INCLUDED, 7/16" WRENCH NOT INCLUDED



ASSEMBLY

LAY UPRIGHT LEGS ON GROUND AS SHOWN

STEP 1- CONNECT EACH UPRIGHT LEG TO LOWER CROSS MEMBER WITH REQUIRED HARDWARE FOR THE MODEL ASSEMBLING

STEP 2- CONNECT EACH UPRIGHT LEG TO UPPER CROSS MEMBER WITH REQUIRED HARDWARE FOR THE MODEL ASSEMBLING

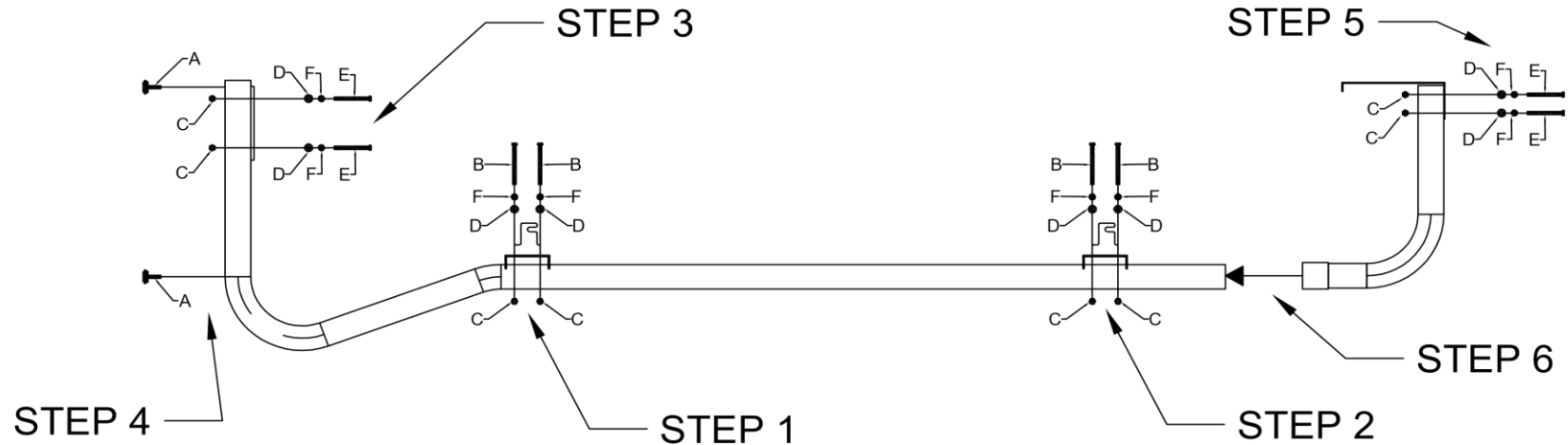
STEP 3- CONNECT COUNTERWEIGHT TO UPRIGHT LEG WITH HARDWARE AS SHOWN FOR EACH LEG

STEP 4- CONNECT LEVELING FEET TO UPRIGHT LEG WITH HARDWARE AS SHOWN FOR EACH LEG

STEP 5- CONNECT SIGN TO SIGN LEG WITH REQUIRED HARDWARE FOR THE MODEL ASSEMBLING

STAND UNIT IN UPRIGHT POSITION

STEP 6- SLIDE SIGN LEGS ONTO UPRIGHT LEGS AS SHOWN



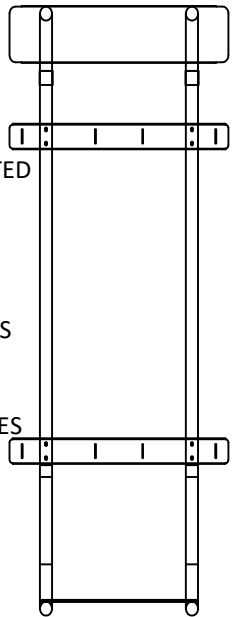
FRAMEWORKER® MINI



RATED FOR 150lbs
EVENLY DISTRIBUTED
UNIT INCLUDES
BASE FRAME
1, 24" GRIDWALL
2, 24" BASKETS
10, 10" PEG HOOKS
3, 24" SLANTED
SHELVES
1, 24" FLAT SHELVES

24" DISPLAY RACK

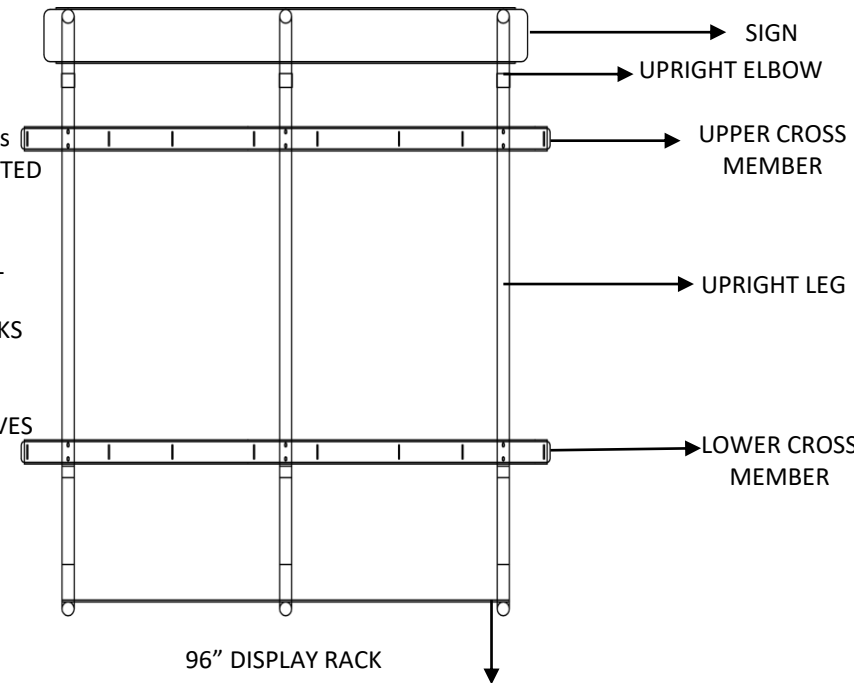
FRAMEWORKER®



RATED FOR 250lbs
EVENLY DISTRIBUTED
UNIT INCLUDES
BASE FRAME
2, 24" GRIDWALL
4, 24" BASKETS
20, 10" PEG HOOKS
6, 24" SLANTED
SHELVES
2, 24" FLAT SHELVES

48" DISPLAY RACK

FRAMEWORKER® SENIOR



RATED FOR 350lbs
EVENLY DISTRIBUTED
UNIT INCLUDES
BASE FRAME
4, 24" GRIDWALL
8, 24" BASKETS
40, 10" PEG HOOKS
12, 24" SLANTED
SHELVES
4, 24" FLAT SHELVES

96" DISPLAY RACK

COUNTERWEIGHT

OPTIONAL FRAMEWORKER® EQUIPMENT:

- 3FT CONVERSION KIT THAT MOUNTS ON THE **FRAMEWORKER® MINI**
- MULTIPURPOSE SHELF FOR COFFEE/KIOSK STATION
- DVR HIDE MOUNTS UNDER MULTIPURPOSE SHELF
- SIDEPANELS; USED TO SEPARATE 2FT SECTIONS OF GRIDWALL OR END CAPS
- BACK MOUNT SIGN LEGS

LEGAL NOTICE: The products shown are Patent Pending. FrameWorks, FrameWorker, and "Assistants for Merchandise and Retail Display" are the exclusive trademarks of FrameWorks Displays and that it actively and aggressively enforces its intellectual property right to the fullest extent of the law. Copyright 2023 All Rights Reserved.



MADE IN THE USA
www.frameworksdisplays.com

2304 SAMPSON ST. MUSCATINE, IA 52761 563-263-9999; 563-554-1262