

Shoshone County EMS Corporation

2015 Annual Report



William A Holstein Jr.
Chief Officer
Shoshone County EMS Corporation
April 1 2016
wahchief@shoshonecountyems.org

Executive Summary

This Annual Report is intended to provide the reader a brief overview of Shoshone County EMS Corporation's operations and accomplishments of last year.

2015 was a good year for the Shoshone County EMS Corporation. We saw an improvement to our bottom line due to changes we made in 2014.

1. Added Advanced Life Support transfer services from Shoshone Medical Center to other area hospitals to meet the needs of the community and improve our revenue.
2. Evaluated billing services and switched to System Design in Poulsbo WA. increasing our collections.
3. In an effort to control costs negotiated a monthly reimbursement cap with the Fire Districts.
4. Entered into a contract with Shoshone Medical Center to provide Paramedics and EMTs for staffing when the hospital needed additional help, increasing our revenue and improving our service to the community.

The Corporation placed its third grant ambulance in service in January 2015 and continued a proactive maintenance program on all of our equipment to ensure that it is ready to respond.

We continue to train our personnel so that they may provide the best care possible to our community.

We continue to look for ways we can partner with stakeholders in the community to develop ideas to address the gaps in services in the Silver Valley and implement solutions in the years to come through partnerships and shared resources.

The Shoshone County EMS Corporation appreciates the trust and support that citizens provide us and will continue to look for ways to improve what we can in our organization to maintain their trust and support.



Contents

Executive Summary	1
Contents	2
History	3
Equipment	4
Personnel.....	5
Services.....	6
Training.....	9
Financials.....	9



History

Shoshone County EMS Corporation started providing ambulance transport services on January 1st 2013. In order to make that happen the Board of County Commissioners and the Fire Districts in the County came together to formulate a plan, and create the new entity that was going to take over after Kellogg Community Ambulance Service's owner retired on December 31st 2012.



Many different options were discussed, for instance should the new company be private or government, should it be turned over to the fire districts or run completely separate. The planning group evaluated all of these options by looking at EMS services in many different counties in the State of Idaho and nationally to find the right model for Shoshone County. What they found was that there is no one model that works for everyone so they took ideas from a lot of different sources.

The main goals of the new Corporation were;

1. To ensure that the ambulance service maintained or improved the level of service currently being provided.
2. To not increase taxes to the citizens of Shoshone County.
3. To have a service that was based in Shoshone County and provided by people who lived in Shoshone County.
4. A single service covering the areas identified in our Service Agreement with Shoshone County.

With those things in mind in November 2011 Shoshone County Emergency Medical Service Corporation was formed. Board members were appointed with a representative from Fire District #1, Fire District #2, Fire District #3/Mullan, the Board of County Commissioners and a representative of private industry in the county. The Board's first goal was to define the role of the Corporation within the County. The initial thought was to reach out to all the Emergency Medical Service providers in the county and see if it would be possible to bring them all together under one county wide System. The Board was unable to bring in all the providers in the County but did secure commitments from Fire District #1, Fire District #2, Fire District #3 and Mullan Volunteer Ambulance as well as support from Shoshone Medical Center Administration. The company started to take shape, and received their first ambulance from St. Joe EMS.

In November of 2012 a part time Chief Officer was hired to finalize the setup of the corporation, start getting the crews orientated to the new service, and work with the Fire Districts to get employees on board to begin service January 1st 2013. The Chief Officer applied for all the necessary Identification

numbers and established the process and procedures to interface with the billing company the Board contracted with to process and submit the ambulance bills to the numerous insurance companies and the Center for Medicare Service (Medicare).

In December of 2012, Shoshone County EMS Corporation received its 501 (c)3 status from the IRS, its National Provider Number, and an ambulance license from Idaho EMS Bureau to provide ambulance transport service at the Intermediate EMT level. The Corporation has agreements in place with Fire District #1 and Fire District #2 to each hire three employees to staff the ambulances that will be assigned to the Districts' station and the Corporation will reimburse the Districts the cost of the new employees. Everything is in place and on January 1st 2013 we began providing ambulance transport services to the people of Shoshone County.



Mission Statement for Shoshone County EMS Corporation:

To provide the citizens of Shoshone County with quality EMS services in a professional manner.

Equipment

We started 2015 with five ambulances. One 2012 Dodge ambulance was purchased on a State EMS Bureau grant and delivered in December of 2012 responding from the Kellogg Fire Station. The second ambulance is a 2013 Dodge ambulance that was

purchased on a State EMS Bureau grant and delivered in January of 2014 responding from the Osburn Fire Station. The third ambulance is a 2004 Ford ambulance donated by Kootenai County, this ambulance is the backup ambulance located in the Kellogg Fire station. The Fourth ambulance is a 1991 International ambulance, which was donated by Mullan Volunteer Ambulance service. It is housed in the Wallace Fire Station as a backup ambulance. In July of 2014 the Corporation applied for



and was awarded a grant for a new ambulance. This ambulance is a 2012 Ford built by Braun Northwest and put into service in January of 2015 as our Advanced Life Support inter-facility transport Ambulance, it is housed at the Waste Management building on Silver Valley Road. At the end of 2015 we maintained five ambulances and one utility vehicle in our fleet.

The Corporation was also successful with a State Grant in 2014 and 2015 to equip our fifth ambulance with a Stryker power stretcher and three of our ambulances with Stryker mechanized Stair Chairs.

Personnel

Administration

The corporation's administration team is made up of six board members and a chief officer. Each board member was appointed by the agency they represent. John Specht is the Chairman of the board, he represents Shoshone County Fire District #1, Bruce VanBroeke is the Vice Chairman, he represents Shoshone County Fire District #3, Mike Dexter is the Secretary/ Treasurer, he represents Industry in the County, Jay Huber represents the County, Dale Costa represents Shoshone County Fire District #2 and Jerry Brantz represents Shoshone Medical Center. The Board has met almost every month since October 2011 to bring the best ambulance service possible to the Silver Valley while staying fiscally responsible. The Chief Officer is William (Bill) Holstein. Bill is an Idaho licensed paramedic and has been in Public Safety for 22 years.



Responders

The Board of Directors decided early on to partner with Fire District #1 and Fire District #2 to insure 24 hour per day, seven day a week staffing for two ambulances. The fire districts and the corporation work together in recruiting and training the personnel that staff the ambulances. It was the goal of the corporation to fairly reimburse the fire districts for the personnel costs to staff the ambulances. The board also wanted two ambulances staffed per day with the capabilities of additional ambulances as needed during busy times. It was determined the best way to accomplish that in Shoshone County was to hire three new firefighter EMTs for each fire department and recruit and hire part time on call personnel that will be available to fill open shifts and additional ambulance calls as needed. Most of the on call responders came from Community Ambulance Service. All of the EMTs and Advanced EMTs that worked on the 911 ambulances in 2015 were employed by either Fire District #1 or Fire District #2. The EMS Corporation employs paramedics, nurses, EMTs, Advanced EMTs and drivers for the inter-facility transfer ambulance.

Services

Advanced Life Support

In April of 2014 Shoshone County EMS Corporation received an Advanced Life Support Interfacility Transport license from the Idaho State Bureau of EMS making it possible for us to transfer patients that required care and procedures that Advanced EMT's could not do from Shoshone Medical Center to Kootenai Health or other area hospitals. The EMS Corporation had 3 paramedics and 5 nurses that initially started the program. Without this service patients were waiting for at least an hour, most times a lot longer for an ambulance to come from Kootenai County to perform these transports or a helicopter was called increasing the cost of the transport.

Intermediate Life Support

Intermediate Life Support (ILS) is a level of care that is provided by Advanced EMTs. ILS includes some limited advanced life support skills like Intravenous catheterization and fluid administration, insertion of a supraglottic airway device for patient that are not breathing and the administration of certain lifesaving medications.

Basic Life Support

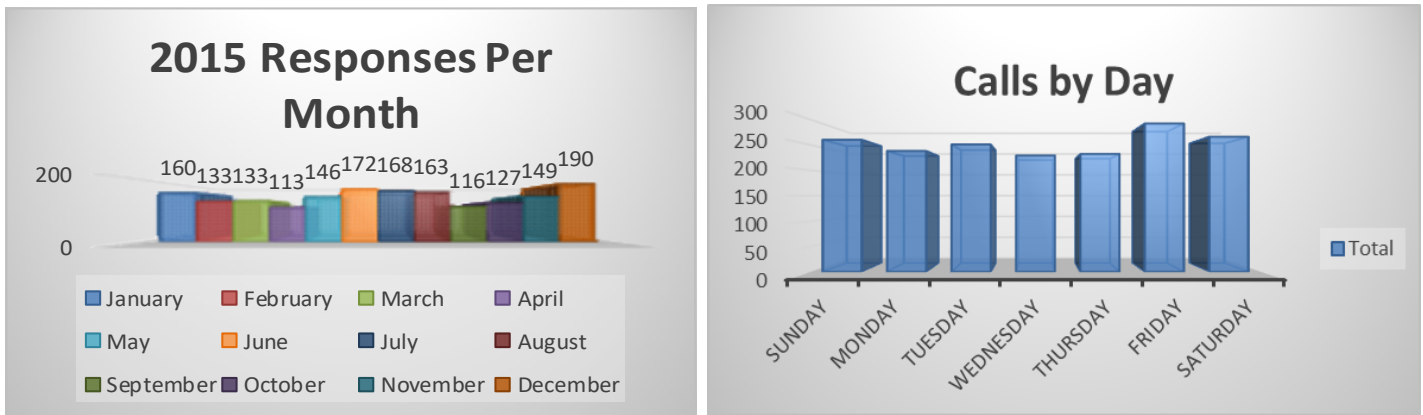
Basic Life Support (BLS) is a level of care that is provided by both the Advanced and Basic EMT. These skills include administration of Oxygen, splinting, checking blood pressure and many more patient assessment procedures. EMT basic is the lowest level of provider that can work on an ambulance as the sole provider during transports to the hospital.

Hospital Agreement for Assistance

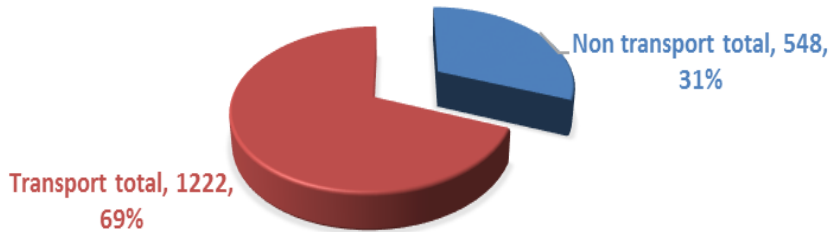
Shoshone County EMS Corporation entered into an agreement with Shoshone Medical Center in 2014 to provide Paramedics and EMTs to help when Shoshone Medical Center needed additional staffing during high volume periods. The Paramedics and EMTs have received additional training in the hospital, and the Corporation receives an hourly rate for the time the Paramedics and EMTs are working at the hospital.

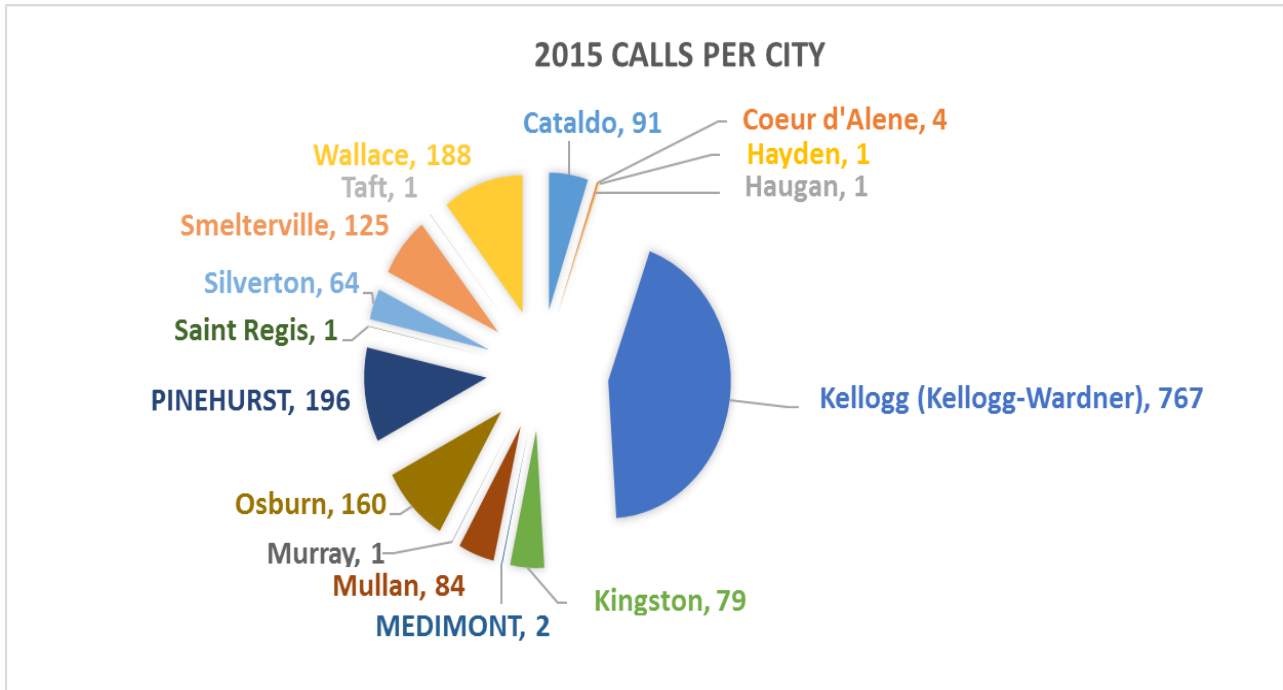
Statistics

In 2015 the Corporation’s ambulances were licensed to transport patients at the Advanced Life Support inter-facility transport level, and Intermediate Life Support level for prehospital. The ambulances responded to over 1,700 calls and 23 % of the time we had two or more ambulances assigned to calls at the same time over the past year. Time of dispatch to arrival on scene was 13 minutes or less 80% of the time throughout our response area in 2015.



NUMBER OF TRANSPORTS VS NON TRANSPORTS





Training

In 2015 the EMS Corporation provided an EMT class for 10 students and an Advanced EMT class for 6 students. Run reviews were held each month to review some of the calls from the preceding month with Dr. Scott Reed who is our medical director. Some of the corporation employees participated in 48 hours of training with the hospital to meet the requirements of our support contract.

Each licensed Emergency Responder is required to complete between 24 to 40 hours a year of continuing education to be able to maintain their current license.

Financials

The Corporation has different sources for our revenue. We bill for ambulance transports. We receive money from Shoshone County to help offset the expenses from the uninsured and under insured patients we transport. We actively seek Federal, State, and Local grants and donations for equipment.

Our billing company is System Design Ambulance Billing, located in Poulsbo WA. The board chose to switch to System Design in 2014 in an effort to improve our collection rate and have better access to billing reports.

After System Design has exhausted all attempts to collect valid payments, the accounts are turned over to Shoshone Adjustment Bureau for continued collection attempts.

Shoshone County has an established EMS fund in their budget that provides money to the Corporation and other EMS providers in the County. The portion that the Corporation receives is to help offset the large number of uninsured patients in the County.

To help the Corporation track our finances we engage the services of HF Magnuson Company in Wallace to handle our book keeping.

The Chart below shows the breakdown of the revenue we received and our expenses for the year.

