

Asphalt -A-Way

Biodegradable Tar and Asphalt Remover

Product Description

Asphalt-A-Way is a proprietary low volatility, biodegradable, solvent/emulsifier and enhancing blend formulated for industrial cleaning, degreasing, and adhesive/resin dissolution. The blend combines broad spectrum solvents with additives for boosting solvency of non-polar resins and a combination of emulsifying and wetting agents. **Asphalt-A-Way** exhibits low VOC and high flash point, allowing it to be used under extreme conditions. It is particularly effective in liquefying baked-on hydrocarbon compounds which can then be removed or rinsed away. It can be combined with other solvents to improve their efficiency.

Features

- Effective solvency for oils, greases, many paints, adhesives, some resins, and tough hydrocarbon residues.
- Enables the formation of stable oil-in-water emulsions or microemulsions when diluted, improving rinseability and soil suspension.
- Slow-to-moderate evaporation provides good residence time for penetration and solvency.
- Breaks down and fluidizes hardened asphaltenes.
- Can be applied neat or diluted into other solvent.
- Enhances the dissolving capability of other solvents.
- Reduces the use of heat.
- High flash point makes it suitable for applications in which heat is required.
- Readily biodegradable in 28 days.
- Safe to handle.

Applications

- Use as a neat solvent for heavy-duty degreasing and resin removal where slow evaporation and high solvency are desirable.
- For aqueous cleaning systems, preblend at 1–10% active in water with agitation to form stable emulsions.
- Industrial equipment sludge removal, where liquefying of hardened hydrocarbons is needed.
- When applied undiluted on surfaces, use a low pressure sprayer to wet the surface thoroughly, wait 20 to 30 minutes before removing with a pressure washer.
- When applied to remove heavy hydrocarbons or tank sludge, it is combined with a lighter solvent. It is pumped into the vessel/tank and circulated. Heat may or may not be used depending on the severity of the material.

Please contact a Revive Production representative for specific recommendations on your intended application.

Typical Properties

Form, @ 70°F	Clear yellow to amber liquid
Density, (lbm/gal)	7.36
Flash Point, °F (PMCC)	>300
Vapor Pressure, mmHg	<0.4
PH @ 77°F	6.5 – 7.0
Boiling Point, °F	632
Viscosity, cSt @ 77 °F	4.5
Solubility	
Fresh Water	Insoluble
High TDS Brine	Insoluble
Isopropanol	Miscible
Xylene	Soluble
Material Compatibility	
Compatible with	Stainless steel, carbon steel, HDPE, PTFE, Viton, Buna N
Not recommended with	Nitriles, natural rubber, PVC, PE

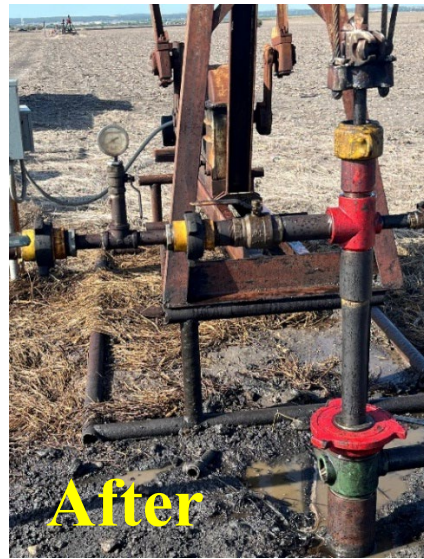
Shipping and Handling

Asphalt-A-Way should be stored in either lined carbon steel or HPDE containers. **Asphalt-A-Way** is available in 55-gallon drums, 275-gallon IBC totes, and bulk tank wagons. As with any individual chemical, avoid prolonged contact with skin. In case of skin or eye contact, flush exposed area with copious amounts of water. A Safety Data Sheet outlining proper handling of this product is available upon request or will be forwarded upon the purchase of **Asphalt-A-Way**.

US: Non-Regulated / Nonhazardous

Disclaimer of Liability: Revive Production warrants to purchasers, but no third parties or others, that the specifications for the product shall fall with a generally recognized range for typical properties established by Revive Production, when the product departs from Revive Production's point of origin, and that any services shall only be performed in WARRANTY OF MERCHANTABILITY OR FITNESS FOR A PARTICULAR PURPOSE, REGARDING ANY SERVICES PERFORMED OR PRODUCT SUPPLIED. Revive Production will give purchaser the benefit of Revive Production's best judgment in making interpretations of data but does not guarantee the accuracy or correctness of such interpretations. Revive Production's recommendations contained herein are advisory only and without representation as to the results. Revive Production shall not be liable for any indirect, special, punitive, exemplary, or consequential damages or losses from any cause whatsoever including but not limited to its negligence

Oil Field Cleanup



Crack Sealer



Asphalt Sealant

