

# **Grille, Front Axle, & Underbody Light Installation Instructions**

**These Lights are designed to connect with a DCS JK Frame Mount Rocklight set with 2 pin waterproof connectors.**

**Grille Light:** Mounts in the top center section of the grille using high power magnets. Attach light to top center of radiator support. Light must be placed to right side of square latch hole so it will not come into contact with the hood release. Route wire to the right side of the vehicle, behind the headlight housing, and into the engine bay. The light will plug into the “C” harness.

**Front Axle Light:** Mounts above the front axle by attaching to frame tube beneath radiator (fig 1). First clip plastic band around the tube and position so screw holes are facing downwards. Using a phillips screwdriver and supplied screws, attach light by threading one screw in halfway then starting the second screw. Once both are threaded, tighten until snug. **DO NOT OVER TIGHTEN!** Wire should be routed towards the right side of the vehicle and up into engine bay. Use supplied zipties to attach wire to the tube. The light will plug into the “C” harness.

**Underbody Lights: Mount within the body below the driver and passenger doors (fig 2). Insert wire lead into hole where light is to be mounted. Pull wire out of rectangular hole in front of mounting location. Wire should be routed above the frame and into the square hole where frame mount harness exits. The light will plug into the mid frame light location. It is best to do this prior to installing the mid frame light. Continue these steps for both sides of vehicle.**

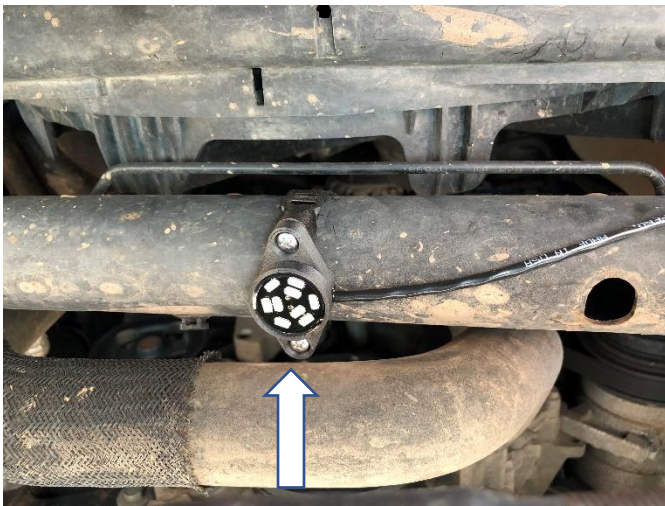


Figure 1

**Rectangular hole where wire should exit and be routed above the frame**



Figure 2