

JL Frame Mount Rock Light

Installation Instructions

www.DCSLighting.com



Like and Follow us on Facebook and Instagram @dcslighting

Thanks for choosing a DCS product that is designed and manufactured in the USA!

Installation Time: 60-90 Minutes

Tools Needed: Wire snake or similar device, Wire strippers/crimpers, Electrical tape, 10 mm Wrench, 13 mm Wrench

Contents: 4 Mid lights, 4 Wheel lights, 1 Drain plug light, 1 Front axle light, 1 Center light, Drivers side harness "A", Passenger side harness "B", Engine compartment harness "C", & Zip-Ties

Note: Installation should be done when temperature is above 70°F, this will allow the rubber bushings to be more flexible. If the interior of the frame is dirty it is best to wash it out prior to installation.

Step 1: Install wire harnesses. Starting on the passenger side. From under the Jeep, locate the hole in (fig 1). This is where the wiring will exit the frame. Insert your wire snake/tape into the hole in the frame just above the rear lower control arm (fig 2). Insert the snake/tape until it can be pulled through hole in (fig 1). Attach "A" Harness as pictured in (fig 3). Gently pull the harness through the frame and out of the hole. Repeat this process for the passenger side.

Step 2: Identify light locations. Using your fingers pull the harness plug out of the hole where each light is to be installed. "MID" Lights fit within the round & oval

holes under the doors in the middle of the vehicle (fig 4). “FRONT” lights fit the holes directly behind the front wheels (fig 5). Rear lights fit the large hole just behind the rear wheels (fig 6). The drainplug in the rear jack compartment is replaced by the drain plug light (fig 7). The front axle light attaches to the radiator hose support (fig 8). Center light attaches to the frame crossmember just rear of the transfer case (fig 9)

Step 3: Install lights. When installing lights, push light in at an angle then work in the remaining sections. Do not push from center of light as damage may result.

Remove stock jack and hardware. Remove stock drainplug. Insert drainplug light into jack compartment location. Wiring should run underneath the vehicle along rear frame rail. If equipped with tow package, route the wire with tow wiring using zip ties. Route wire towards passenger side frame rail and attach to “B” harness.

Using your 13 mm wrench, remove the nut from the frame crossmember where the center light is to be installed. Use this nut to install center light. DO NOT OVER TIGHTEN. Route wiring along crossmember and into to drivers side frame (fig 10). Connect to the harness at the “MID” location. There is enough wire to route in a manner where it will not be affected by heat from the exhaust. Use zip-ties to secure the wire. The “MID” lights can now be installed.

Rear lights fit into frame tube behind the rear wheels. Firmly push light all the way in. Wiring should be attached to stock wheel sensor wire using zip-ties. Connect wiring to rear of A & B harnesses.

Front lights fit within hole in frame behind front wheels. Insert wire lead from light into hole. Feed wire down until it can be connected to the harness.

Remove 10mm nut from radiator hose support bracket (fig 8). Use the nut to attach the front axle light. DO NOT OVER TIGHTEN. Route wire to the side and up into engine bay. Be sure to secure wire so it does not contact any moving parts. Connect to the “C” harness.

Step 4: Once all wiring is run and lights installed, it is time to connect the harnesses. Route the male end of each harness up along the frame rail and into the engine bay. The “C” harness can now be connected to join the two harnesses together. This harness is reversible to accommodate a power connection on either the driver or passenger side.

Note: When routing the wire harnesses up into the engine bay be sure to route in a manner where the wire will not come in contact with the exhaust. We recommend routing behind existing shielded wire located above the exit hole on both sides (Fig 1). Once the wiring is all routed properly, connect the “C” harness to a switched, relay protected power source.



Figure 1

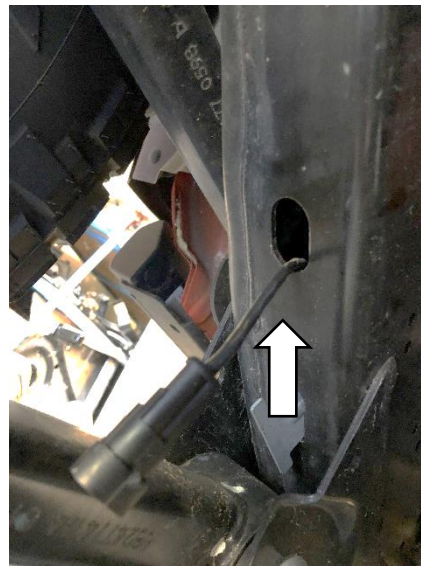


Figure 2



Figure 3

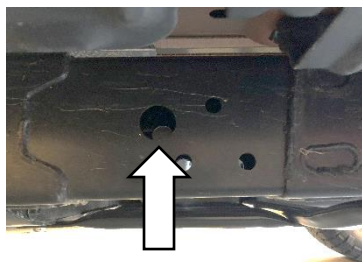


Figure 4



Figure 5

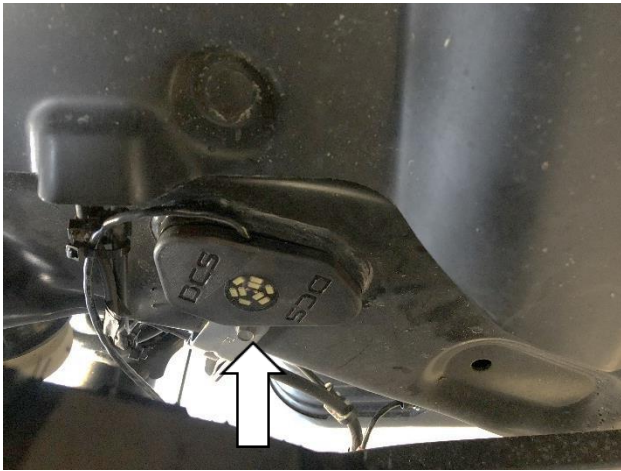


Figure 6



Figure 7

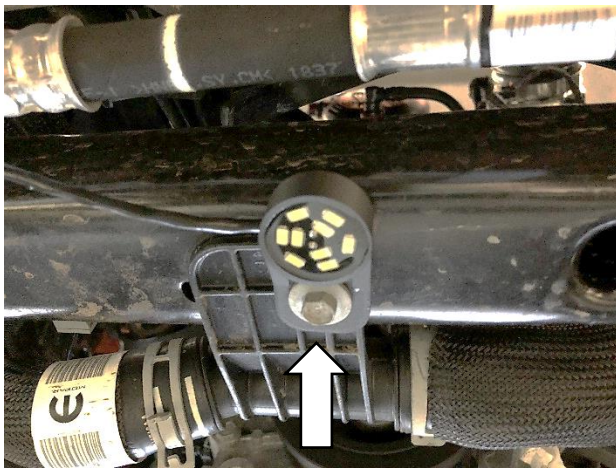


Figure 8

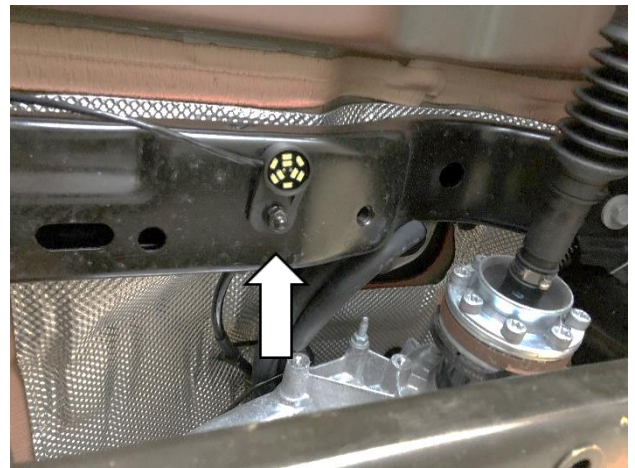


Figure 9

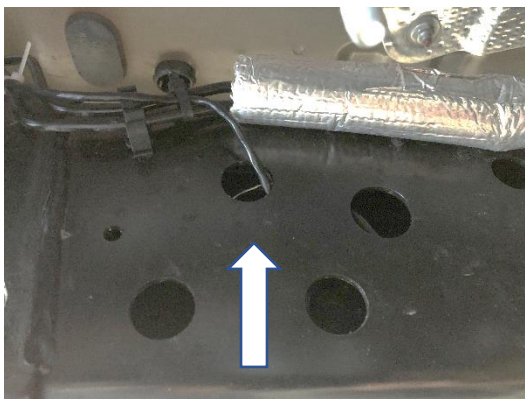


Figure 10