



Regional and Rural Edition

A Focused Update to the 2016 Countywide Parks Needs Assessment

Clement Lau, AICP, Departmental Facilities Planner
Los Angeles County Department of Parks and Recreation

Welcome and Agenda

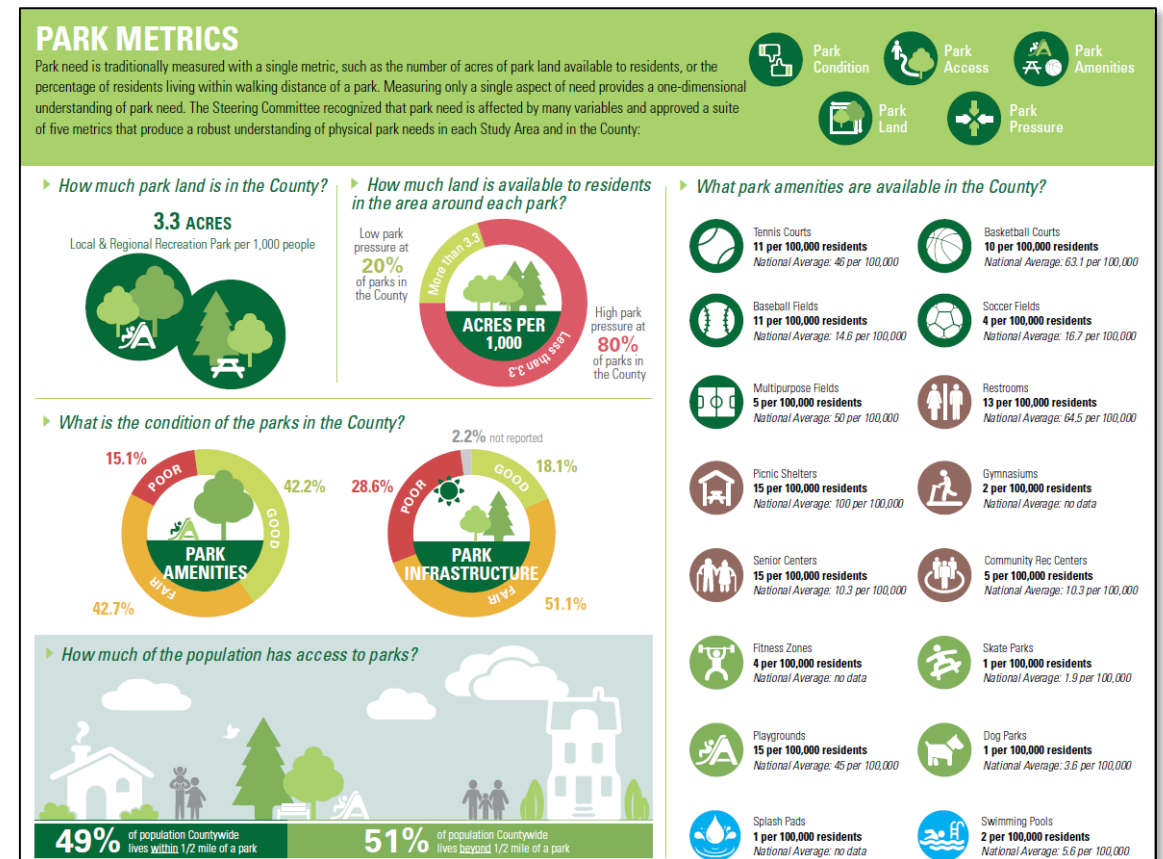
- Background
- Study Overview
- Community Engagement Overview
- Staying Connected



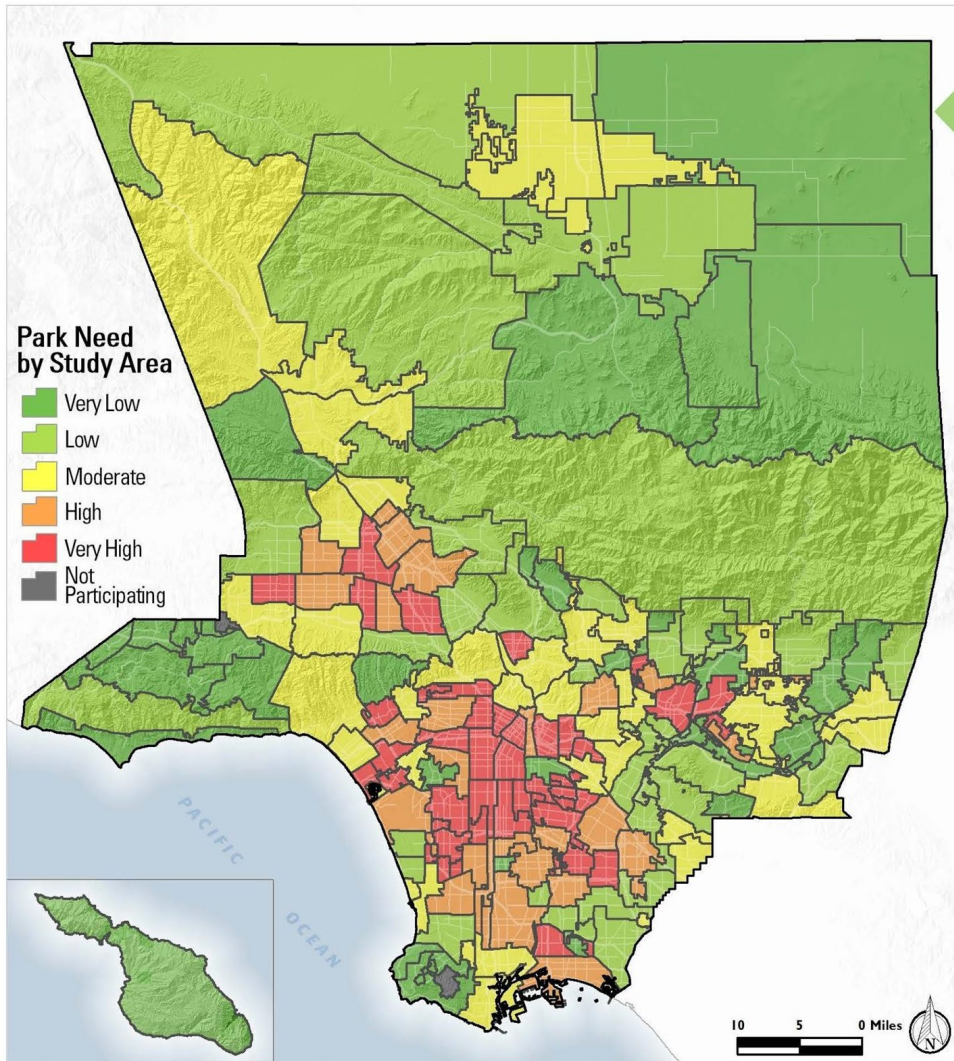
Background



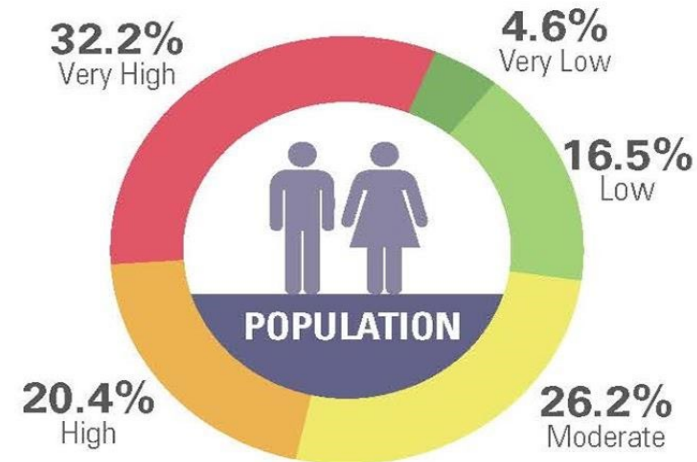
2016 Countywide Parks Needs Assessment



2016 Countywide Parks Needs Assessment

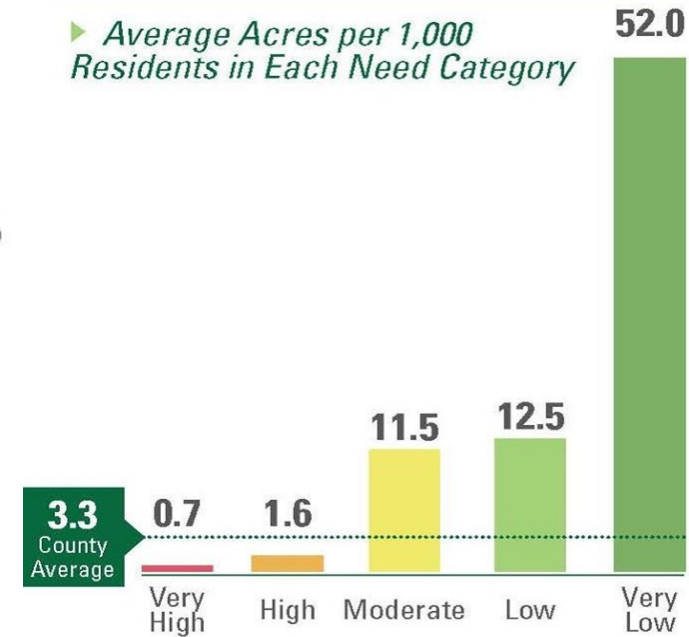


Population in Each Need Category*



*0.1% Not Participating

Average Acres per 1,000 Residents in Each Need Category



Board Motion: March 5, 2019

- The “Regional Recreation, Beaches, Rural Areas and Open Space Needs Assessment” shall be completed in 2021.
- Then in 2025 and years thereafter, a unified comprehensive Los Angeles Countywide Comprehensive Parks and Recreation Needs Assessment update combining both assessments shall be completed and led by the County Department of Parks and Recreation.



Study Overview



Regional and Rural Edition



Two Areas of Focus:

- 1) A comprehensive inventory and analysis of **Regional** parks and open space assets including regional recreational facilities, beaches and lakes, open space and natural areas, and trails.
- 2) An examination of park needs in the **Rural** areas of L.A. County using additional methods and metrics.



Project Goals

- Engage the public about the need for regional recreation parks, beaches and lakes, natural areas and open space, trails, and park facilities/amenities for rural areas.
- Identify gaps, land acquisition opportunities, and priority areas for acquisition.
- Collect data, develop metrics, and provide analyses that guide future planning and resource allocation.
- Recommend approaches and strategies for multi-jurisdictional coordination, collaboration, and partnerships.

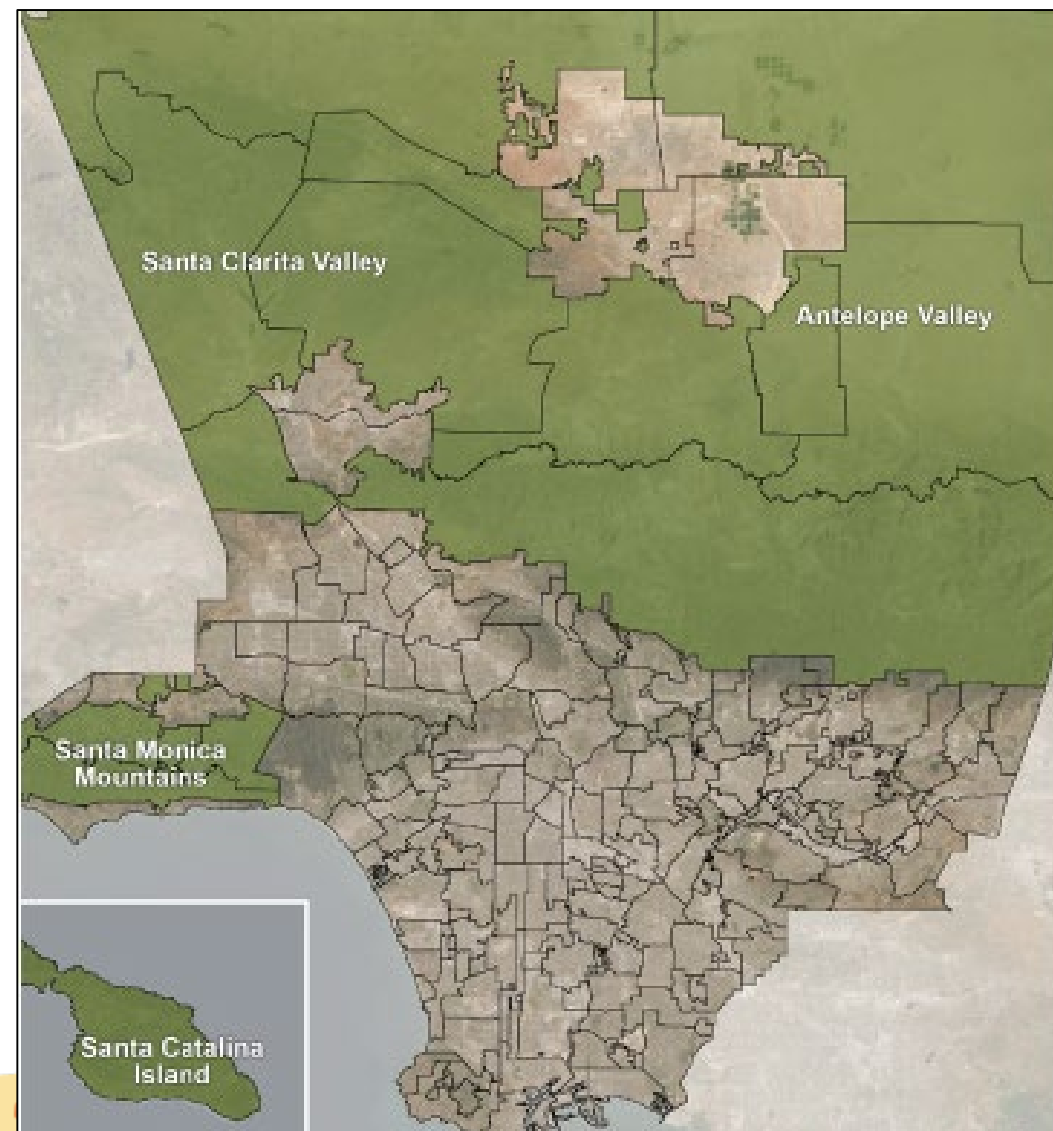


Study Areas

Regional



Rural



Community Engagement Overview



Who are we reaching out to?

- Multilingual
- Multigenerational
- Residents
- Park/Trail User Groups
- Under-represented
- Partners
- Community Leaders
- Board Offices
- Town Councils
- Native American/Tribal Communities
- Community-based Organizations
- Health-related Groups
- Land and Trail Managing Agencies
- Environmental Organizations



Community Engagement Tools

we all need
PARKS
Regional and Rural Edition 2021

**REGIONAL AND RURAL EDITION
OF THE
COUNTYWIDE
PARKS NEEDS
ASSESSMENT**

LOS ANGELES COUNTY
DEPARTMENT OF PARKS
AND RECREATION

HOME

REGIONAL FACILITIES

RURAL FACILITIES

COMMITTEE



2021

WE ALL NEED SPACE TO ROAM!

The Los Angeles County Department of Parks and Recreation is conducting a comprehensive study to understand and document the need for regional facilities like beaches and lakes, natural areas and open spaces, regional parks, and trails, and the park needs of the rural parts of the County.

we all need
PARKS
Regional & Rural Edition 2021

COUNTYWIDE PARKS SURVEY

Please take a few minutes to share a little bit about your use of regional parks, natural areas, trails, and other regional amenities in LA County. Your answers will help us to better understand and meet park and recreation needs in our region!

Your responses will remain anonymous, even if you choose to provide your contact information at the end of the survey.

This is the first of a series of short surveys. For more information about the Regional and Rural Edition and future surveys, please sign up for our email list at the end of this survey.



English

>

Instagram


Search

Home

Activity

Heart

Profile



lacparkneeds Edit Profile

10 posts 79 followers 121 following

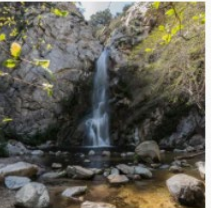


Los Angeles County Park Needs
Official account of the Los Angeles Countywide Parks Needs Assessment
(<https://lacountyparkneeds.org/>) maintained by @lacountyparks
new.maptionnaire.com/q/4j3jv8n3lur

POSTS

IGTV

SAVED

TAGGED





Rural Parks Survey



we all need



Regional & Rural Edition 2021

RURAL PARKS SURVEY

Share your thoughts about Parks in Rural Areas!

Please take a few minutes to share a little bit about your use of parks, natural areas, trails, and other amenities in the rural areas of LA County, which include primarily unincorporated communities in the Antelope Valley, Santa Clarita Valley, Santa Monica Mountains, and Santa Catalina Island. Your answers will help us to better understand and meet park and recreation needs in your community!

Your responses will remain anonymous, even if you choose to provide your contact information at the end of the survey.

This is the second of three surveys. Don't worry if you missed the first one—you can still participate in this survey! To learn more about LA County's efforts to enhance our rural parks and recreation facilities and to take part in future surveys, please sign up for our email list at the end of this survey.



Meetings – Online and In-person

Polls

Polling 2: Must Haves

Polling is closed 9 voted

1. Which park amenities are must haves?
¿Qué servicios del parque son imprescindibles? (Multiple choice)

play area - Área de juego	(8/9) 89%
lawn/amphitheater - césped / anfiteatro	(6/9) 67%
plaza	(4/9) 44%
shade structure/gazebo - estructura de sombra / kiosko	(8/9) 89%
picnic/bbq area(s) - Área de picnic/barbacoa	(6/9) 67%
sport facilities - instalaciones deportivas	(1/9) 11%
equestrian facilities - instalaciones ecuestres	(5/9) 56%
walking paths - caminos	(7/9) 78%
fitness stations - estación de fitness	(2/9) 22%
skate park - parque de patinaje	(7/9) 78%

[Share Results](#) [Re-launch Polling](#)

Participants: MIG Portland, Roxanne Borzo, Esmeralda G..., Jeffrey AKA..., Carlos The A..., Eddie, Sean, Clement, Andrea Vona, Alicia Car, Janet Flores, Wendy's Wat, Robin Rosen..., Trevor Z, Maxine Griffin, Hugo, Luva, Daniel's iP



Community Input

- Which regional and local parks do you visit? What do you do at these parks? How do you get there?
- What are the park priorities for your community and region, e.g. new parks, improvements or additions to existing parks? Have they changed since 2016?
- Are you aware of any potential opportunities for land acquisition for park purposes in your community?
- Do you see a need for more trails in your community and region?



Staying Connected



Staying Connected

- E-mail:
Clement Lau, AICP, Departmental Facilities Planner
clau@parks.lacounty.gov
- Website: <https://lacountyparkneeds.org/rre-home/>
- Social Media (Twitter, Facebook, Instagram): @lacparkneeds

