

# Dolmen de rochesseux and Ermitage

The first part of the walk is the same as the one up to the Puy...

1. Turn right out of house

2. At the small fork in the road just past Le Passadou Restaurant, take the path to the right.



Figure 1: Bear right

3. When you reach the field with the Highland cows, turn right

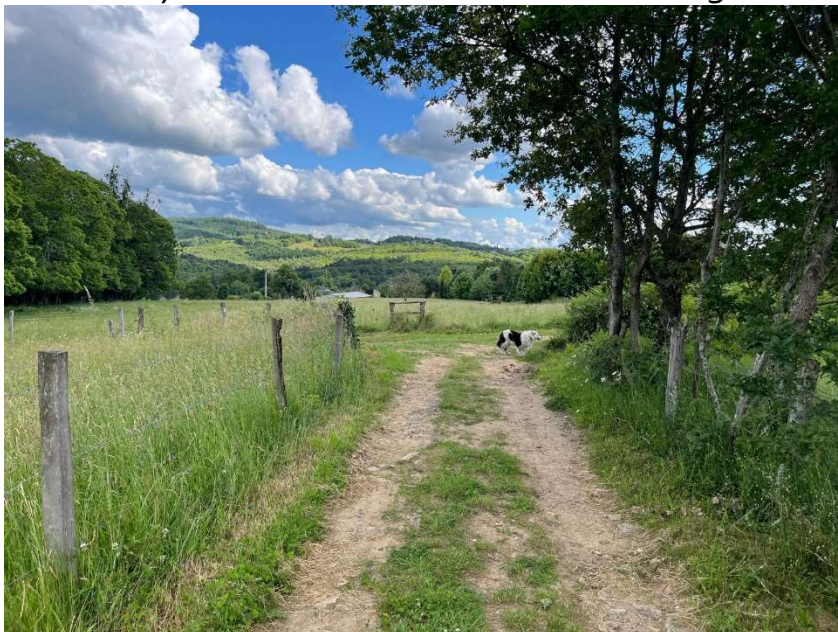


Figure 2: Turn right



..and follow the path until it meets a little road. (for the Puy you would turn right.)

4. For the Dolmen de rochesseux, turn left and follow the road which swings to the right



Figure 3: Turn left

5. At the junction with the bins on your right follow the road signposted for the Dolmen de rochesseux.



Figure 4: Bear right following the signs for the Dolmen



6. At the fork, keep to the right (if you go left look out for the steps on your left, this takes you to the Chapel and on down to Aubazine via Le canal des moines).



*Figure 5: Keep to the right*

When you get to the fenced area, turn sharp left to see the Dolmen de rochesseux, or carry straight on keeping the fence to your left past a house on the right.



*Figure 6: Dolmen*





*Figure 7: Keep on straight, keeping fence on your left*

7. Keep on this well-defined path, look out for a great viewpoint on the left (there are some mushroom wooden sculptures, great view down the valley towards Brive).



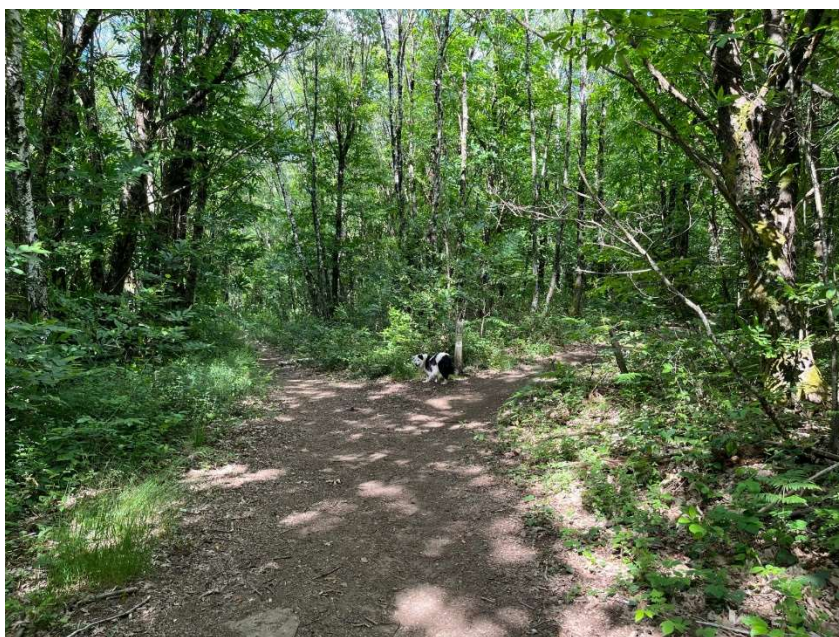
*Figure 8: Viewpoint*





*Figure 9: Great view towards Brive*

8. At the fork, take the right turn and follow this up to the Ermitage du Puy de Pauliac.



*Figure 10: Turn right heading up towards the Ermitage*

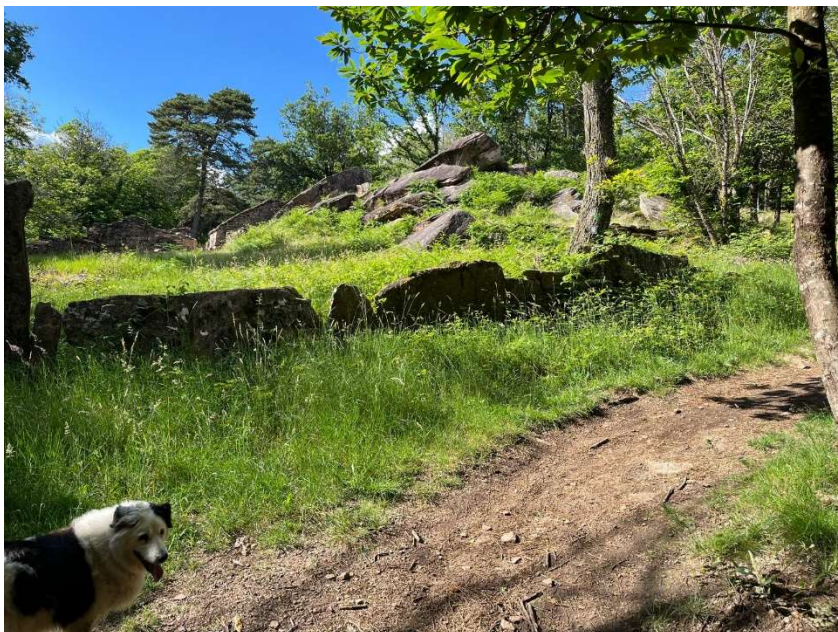


Then turn left to arrive at the Ermitage



*Figure 11: Left for the Ermitage and straight on for the Roussoir (?)*

For the walk we will keep the Ermitage du Puy de Pauliac on our left but feel free to explore ... there is also the Roussoir to have a look at too.



*Figure 12: Keeping the Ermitage on your left*



9. To walk back to Pauliac, look out for a path through the field on the right ... there are some houses that you are aiming for.



*Figure 13: Turn right keeping the Ermitage behind you.*

(You can extend the walk by going straight, instead of turning right, and head past the fountain up to the Puy and come home that way .., it's a bit of a climb but we can't resist the views from the Puy

You can take the left fork up to the quarry or stay right and head back through the houses to the junction (step 4).



*Figure 14: Shorter route back is to keep right and head through the little hamlet on the road.*





*Figure 15: Back at the crossroads*

10. Go straight over to retrace your steps back to Pauliac via the Route de Mardil.



*Figure 16: Turn left (Highland cows should be on the right)*

11. Without really stopping, this is about 60mins.