

## Puy de Pauliac - Up to the Puy (look out)

1. Turn right out of house

2. At the small fork in the road, just past Le Passadou, take the path to the right.



Figure 1: Bear right

3. When you reach the field, turn right and follow the path until it meets a little road.

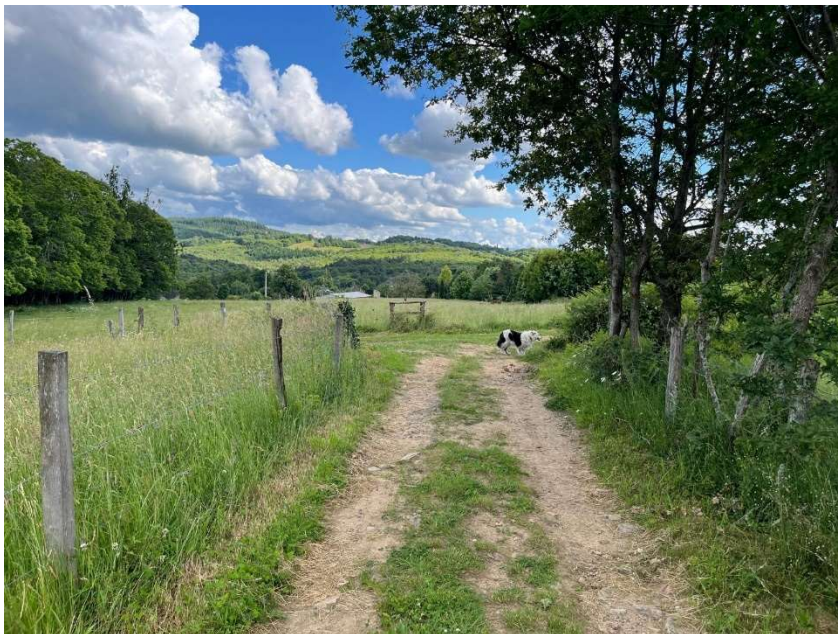


Figure 2: Turn right (look out for the Highland Cows in the field ahead of you).



4. For the Puy, turn right and then first right again up a small path (this junction is left for Le Dolmen and La Chapelle / Le canal des moines. And straight for the quarry & Hermitage)



Figure 3: Turn right for this walk (straight on takes you to the Ermitage and left towards the Dolmen)

Just after you've turned right, turn off the road onto the path on the right (through a small car parking space)

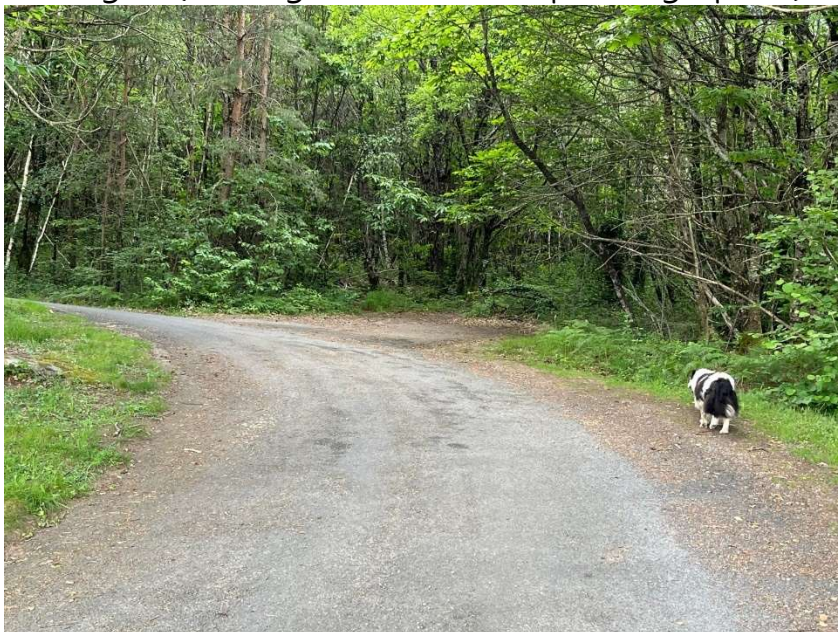


Figure 4: Shortly after turning right, turn right onto a well defined path

5. Follow until you get to Le cromlech du Puy de Pauliac, keep it on your right walk straight and then left uphill until you get to the



Puy. Great views from here and a tradition to climb the rock & have a photo taken! You can also take a picnic and drinks (but there are no bins)



*Figure 5: The Cromlech (stone circle)*



*Figure 6: The Puy (enjoy the views)*

6. You can come down the same route or, with your back to the view, take the right path to the quarry. Follow the path down & read some of the display boards. Then turn left onto the path which will bring you back to the crossroads and you're going



straight opposite to retrace your steps back home.



*Figure 7: Path down to the Quarry*



*Figure 8: Path down to the Ermitage*



7. OR you can come down the 2nd path on your left. Follow the path down & to the left.



*Figure 9: Slightly longer route back home*



*Figure 10: Turn left and head down the hill (right brings you back to the path you used to get to the Puy from the Cromlech)*



8. At the fork, take the right turn and follow this until the house on your left and you turn right following the path.



*Figure 11: Turn right here (straight on takes you down into Aubazine)*

At the house on the left (look for a white plastic chair 😊)..take the path on the right (look for the one that is the most defined).



*Figure 12: Take the better-defined path on the right*



Keep right and head to the cabin in the woods ...should keep the white chair house directly behind you.



*Figure 13: Keep right*

9. Eventually you come to a cabin in the woods on your left and you're taking the path to your right past the little pond. You can just about see our roof on this path!



*Figure 14: Turn right at the cabin in the woods*

10. It brings you back to the Rue de Mardil. Turn left and our house is on the left at the bottom of the hill



*Figure 15: Turn left back into the village*

11. Without really stopping, this is about 45 mins.