

# Château d'eau (Water Towers) and Lac du Coiroux

1. Turn right out of the house and rather than head up the road, turn left down the little lane between the houses.



*Figure 1: Head between the buildings*

2. Keep left onto the made-up track...



*Figure 2: Bear left onto the track*



..and then at the junction bear slightly right (turning left just takes you around the village)



*Figure 3: Bear slightly right*

3. Stay on this main path bearing left at the first junction (going right just goes into a field).



*Figure 4: Bear left*

4. Follow path through the forest until after a bit of a climb you pop out of the forest at another wooden chalet, and you meet the



road (Route de Mardil)



*Figure 5: Turn left (chalet on your left)*

5. Turn left and then at the T-junction turn left and head towards the 4 routes T-junction.



*Figure 6: Turn left*

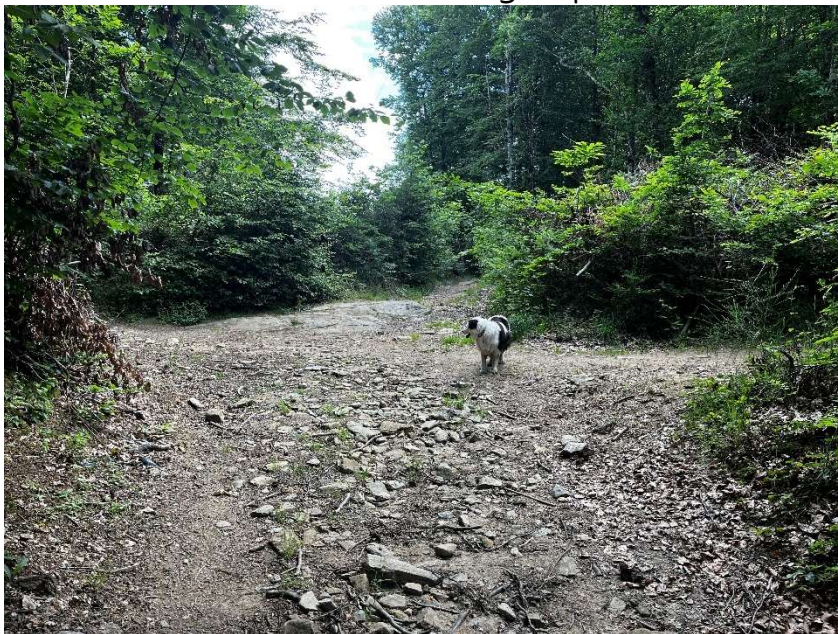


6. Here we head straight over signposted Lac du Coiroux.



*Figure 7: Straight on towards the lake*

7. At the crossroads turn left to head up to the Château d'eau (straight on takes you straight to the lake passing the Camping Campéole Le Coiroux camp site on your left)... we will come back to this crossroads via the right path.



*Figure 8: Turn left for the Water Towers (straight on for the Lake)*

8. Walk up past the Château d'eau staying on the main path until you drop down towards a small hamlet.

9. Take the path on the right.





*Figure 9: Turn right*

10. Bear right and stay on this path until you reach a road (you will see the entrance to the Camping Campéole Le Coiroux camp site on your right, turning left here takes you up to the golf club.)



*Figure 10: Bear right and stay on this path until you reach the road to the golf club*

11. We are heading straight over the road and then turning left (with the crazy golf on your left and head to the lake for a view and drink stop ... there is a lovely cafe near the beach, you can swim in the lake or do the tree top adventure course.)





*Figure 11: Head straight over the road and then turn left at the "No Motor Vehicles Barrier"*



*Figure 12: Turn left and follow around the crazy golf to the lake*

12. From the beach, retrace your steps around the crazy golf and where you turned left, head straight over the road and follow the path to the next junction.





*Figure 13: Head straight over the road*

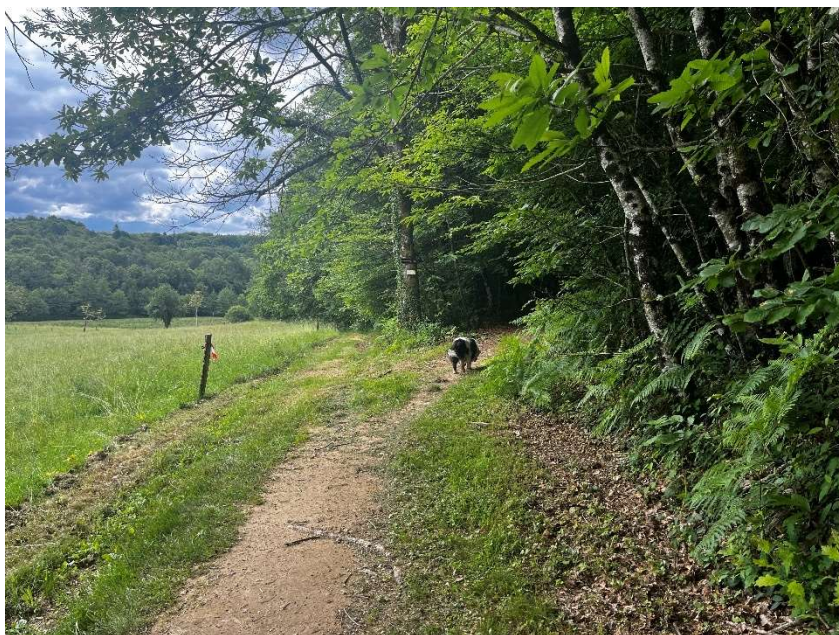
13. You have a choice here, straight takes you back to the crossroads step 6, or to extend turn left eventually arriving back to the crossroads in step 6.



*Figure 14: Turn left to extend walk or straight on to head back towards the 4 routes crossroad (step 6)*

If you do extend, bear right quite soon after you have turned left.





*Figure 15: Bear right*

And turn right at the junction



*Figure 16: Turn right*

Ending up back at the crossroads (step 6) where you turn left and then retrace your steps back to the wooden chalet and turn right and go back the same way to Pauliac.





*Figure 17: Turn left and head back to the 4 routes crossroads*



*Figure 18: Straight over*





*Figure 19: Turn right*



*Figure 20: Turn right and head back to Pauliac*

12. It's a good couple of hours, more with a drink stop or time at the beach