



Morand Industries Ltd. is the proud sponsor of the free pancake breakfast held on Saturday, August 19<sup>th</sup> from 8:00 a.m. – 10:00 a.m.

Morand's Toll-Free Number  
1-800-582-4037

**79<sup>th</sup> Annual Summer Fair  
1944-2023  
Saturday, August 19 &  
Sunday, August 20**



By: Sofia, Grade 3, Darwell School

**H&P  
Kosik  
CONSTRUCTION  
Ltd.**

Harvey  
cell. 780-445-9010  
ph. 780-892-3532

Box 145,  
Darwell, AB  
TOE OLO



No Job too small... We do them all!  
.Road Building . Black Dirt . Sand . Gravel . Clearing . Dugouts



**Darwell & District Agriculture Society**  
[www.darwellag.com](http://www.darwellag.com)

**DARWELL & DISTRICT AGRICULTURAL SOCIETY**  
**79th SUMMER FAIR 1944 - 2023**  
**AUGUST 19 & 20, 2023**

Saturday Admission: Accepting Donations in Lieu of Admission  
 Sunday Admission: Free  
**FRIDAY**

Slo Pitch Tournament (Craig Dahl 780.289.5889)	All Day
--	---------

**SATURDAY**

Morand's Free Pancake Breakfast	8:00 a.m. - 10:00 a.m.
Prepared by Darwell Volunteer Fire Department	
Concession at the Mac Shack	11:30 a.m. - 5:00 p.m.
Bench Show in the hall	Entries from 7:00 a.m. - 9:15 a.m.
Judging at 9:30 a.m./Opening for viewing at 12:15 p.m./Pick up Exhibits 3:00 p.m.	
Women's Institute tea 12:00 p.m. - 3:00 p.m.	
Slo Pitch Tournament (Craig Dahl 780.289.5889)	All Day
Lac Ste Anne Fire Department Inflatables Fire House, demos & Sparky the Bear	All Day
Parade - line up at school	Judging starts at 9:30 a.m. Parade starts at 10:00 a.m.
H & P Kosik Construction Money Mine	All Weekend
Clown Cartel Comedy and Balloon Artist	9:00 a.m. - 3:00 p.m.
Bees Knees Face Painting, Blacksmith demonstration by Scott Quinell, Double Lane Inflatable slide, Hungry Hippo Inflatable Game, Jack Axe, Puddytatts Body Art, Tilted Tiara Petting Zoo, Western Cannon Shootout	10:00 a.m. - 4:00 p.m.
Corn Hole Tournament (entry details and rules on website)	10:00 a.m. - 4:00 p.m.
Farmers Olymp-hicks, skating rink	11:00 a.m.
Musical Entertainer - Dusty Golden	1:30 p.m. - 4:30 p.m.
Dunk Tank	12:00 p.m. - 4:00 p.m.
Grease Pig Contest, skating rink	1:00 p.m.

**SUNDAY**

Concession	8:00 a.m. - 5:00 p.m.
Pancake Breakfast \$2.50	8:00 a.m. -10:00 a.m.
Horse Show	Judging starts at 9:00 a.m.
Kid's Novelty Races near Gazebo	11:00 a.m.
Cattle Show	Starts at 11:00 a.m.
Slo Pitch Tournament (Craig Dahl 780.289.5889)	All day

**CITIZEN OF THE YEAR 2023**

**Tyler Gach**



I moved into the community in 2006. In 2007 I joined the Darwell & District Agricultural Society after attending the events and seeing how amazing a small community could come together. I wanted to be part of it. I met so many amazing people and learned so many things from everyone in our little group. I'm honoured to be chosen, thank you.

**Our sincere thanks and appreciation to Tyler Gach for your years of service to our community.**

*Thank you*

**FOR THE \$25,000 CEF GRANT TO ENHANCE OUR FACILITY!**

**COMMUNITY ENHANCEMENT FOUNDATION**

The Darwell & District Agricultural Society would like to thank every-one who has contributed towards making our summer fair a success.

**THANK YOU!**

**OFFICERS**

President	Chantelle Lalonde
1st Vice President	Brian Gillespie
2nd Vice President	Tyler Gach
Secretary	Gloria Byer
Treasurer	Carla Berry

**DIRECTORS**

Cindy Baker	Sharon Brown	Terry Eberhardt
Debbie Engstrom	Amanda Flynn	Paulette Gillespie
Debbie Grundke	Julie Lalonde	Laura Smith

**MEMBERS**

Jenny Bahme	Robert Brown	Ryan Flynn
Werner Grundke	Chad Lalonde	Debra McDonald
Grant McDonald	Kevin McCoy	Tyler McCoy
Gerry Rose	Julie Schoeman	Maria Smith
Stephen Smith	Lorraine Taylor	Melanie Miller
Craig Dahl	Jessica Maxwell	Andrew Maxwell
Katlin Wruth	Chantelle Theriault	

**FOR FURTHER INFORMATION PLEASE CONTACT:**

Horses:	Cindy Baker	780-719-3809
Cattle:	Debra McDonald	780-785-2907
Bench Show:	Chantelle Lalonde	780-542-0913
Bull Bash:	Carla Berry	780-868-9066
Fairground Rentals:	Cindy Baker	780-719-3809
Slo-Pitch Ball Tournament:	Craig Dahl	780-289-5889
Fair Book:	Amanda Flynn	780-264-2953

**STOCK BY** **MINI BUCKERS BY** **TITLE SPONSOR**

**BARWELL & DISTRICT AGRICULTURAL SOCIETY**  
*Present the*  
**BULL BASH**

**SATURDAY, JULY 22, 2023**  
**GATES @ 5:30 SHOW @ 7:00PM**  
**ADMISSION AT GATES**

Advanced Tickets Available  
**SCAN QR CODE**  
 \$20 ea. or \$55/Family

Gate Entry \$25 or \$65 per family  
 Kids 5 & Under FREE

**RODEO CLOWN \* DARRYL ROBERTSON**  
**TRICK RIDER \* BELLA DA COSTA**

**Bull Riding \* Mutton Bustin \* Mini Buckers**  
**Live Video Screen \* 50/50 \* Chicken Poop Bingo**

**BEER GARDENS** *DJ in the Beer Gardens after the show!* **FOOD TRUCKS**

AGRITERRA EQUIPMENT - BOURKE'S FARM EQUIPMENT LTD. TOMAHAWK - PAULETTE'S SIGNS & DESIGNS  
 EQUUS - MORAND INDUSTRIES - FORTIS ALBERTA - SCORPION AGGREGATES - H&P KOSIK CONSTRUCTION

## In Loving Memory . . . .

Since the 2022 Darwell & District Agricultural Fair, our community has had to say goodbye to 3 past Darwell Ag members and Citizens of the Year; Betty Campbell, Ted Peck and Carol Wagner.

Their contributions to the Darwell community and surrounding communities were impactful and inspirational. We feel that the greatest way to honour these amazing people is to continue to rally community spirit and spread kindness and joy wherever possible. Name plaques have been installed in their memory on the wheelchair accessible picnic table located at the Mac Shack.

**Volunteers don't necessarily have the time; they just have the heart.**

## BENCH SHOW

In the Darwell Centennial Hall

Bench show drop off Friday, August 18 (5:30 p.m. – 7:00 p.m.)

Pre-buy entry tags & exhibit entry

**Saturday, August 19 (7:00 a.m. – 9:15 a.m.)** Tags & exhibit entry  
Judging for the Bench Show will commence on SATURDAY at 9:30 a.m. SHARP

Entry Fees Adults: \$2.00 for first entry and 50¢ for additional entries

*Junior & Intermediate: 25¢ per entry; School Work Free*

**HALL WILL BE OPEN FOR VIEWING AT 12:15 P.M.**

Members of Darwell Women's Institute Tea 12:15 p.m. - 3:00 p.m.

EXHIBITS TO BE PICKED FROM THE HALL UP BETWEEN 3:00 P.M. - 4:00 P.M.

Prize money for all bench show categories will be:

1<sup>st</sup> - \$4.00 2<sup>nd</sup> - \$3.00 3<sup>rd</sup> - \$2.00

**Prize money will be paid out at the end of the show.**

**For more information on judging criteria see Alberta Association of Agricultural Societies website - Judging & Bench Shows**

### HORTICULTURE - FLOWERS, VEGETABLES, FRUITS

**Horticulture Only:** Two entries per exhibitor per class; however, each entry MUST be of a different cultivar and MUST be named. Failure to name all multiple entries in the class will disqualify all those multiple entries. Comply exactly with rules regarding the numbers or your exhibit will be disqualified. All baskets & plants must have been in the exhibitor's possession at least 60 days prior to the show.

To prepare your entries refer to **Helpful Hint for Horticulture Exhibits.**

### FLOWERS

101. Arrangement of garden flowers in a kitchen container
102. Arrangement of fresh flowers suitable for coffee table, will be judged on arrangement and design as well as condition of blooms
103. Arrangement of one or more cultivar of Marigolds, any colour, any kind of foliage, no accessories (e.g. ribbon)
104. Arrangement of garden flowers suitable for dinner table
105. Arrangement of Sweet Peas, in a container with other foliage, no baby's breath
106. Bouquet of garden flowers, one kind, any foliage
107. Bouquet of garden flowers, mixed, any foliage
108. Dried flower arrangement, home grown or native materials, no noxious weeds (wild grasses, flowers, seeds, pods, berries, etc.)
109. Calendula, 3 blooms
110. Collection of 5 different species of herbaceous perennials, one stem of each, in separate containers, on a base.
111. Dahlia, 1 bloom only
112. Gladioli, one spike, any colour
113. Lily, single stem, single or multiple blooms
114. Marigolds, 3 blooms, one cultivar, any colour, under 7.5 cm
115. Pansies, one cultivar, mixed colours, 3 blooms, in shallow container
116. Petunias, 3 blooms, one cultivar
117. Roses, any, one spray, must include leaves and buds



**SANG**  
**CO-OP LTD.**

steannegas.com

Call us 780.967.2246



**CANADA**  
4-H Alberta

Join the 4-H Club!!

**Lakewell 4-H Multi Club**

Enrollment begins in September 2022!

Members: are ages 9-20

Interested in joining Lakewell 4-H Multi Club?

Contact Laura Smith at  
l-j-smith@hotmail.co.uk

- 118. Rose floating in bowl with own foliage
- 119. Sunflower, one stem (can have multiple blooms)
- 120. Any other annual not listed, labeled, 3 stems, one cultivar
- 121. Any herbaceous perennial, labeled, 3 stems, one cultivar
- 122. Any flowering shrub, labeled, 3 stems, one cultivar
- 123. Outdoor hanging planter

**High Point Flower Trophy – Mary Brent Memorial**

**VEGETABLES & FRUITS**

- 201. Collection of 4 root vegetables, 1 of each
- 202. Collection of 4 vine vegetables, 1 of each
- 203. Collection of 4 best vegetables, 1 of each
- 204. Beans, green, plate of 3 pods
- 205. Beans, yellow, plate of 3 pods
- 206. Beets, round cultivar, plate of 3 roots
- 207. Beets, cylinder, plate of 3 roots
- 208. Cabbage, any colour, trimmed, 1 head only
- 209. Carrots, one cultivar, plate of 3 roots
- 210. Corn, sweet table cultivar, 1 ear
- 211. Cucumbers, one cultivar, pickling type, plate of 3 fruit
- 212. Lettuce-Leaf or Head, 1 plant
- 213. Onions, cooking, plate of 3 bulbs, under 8 cm
- 214. Peas, shell, plate of 3 pods
- 215. Peas, edible pod, plate of 3 pods
- 216. Potatoes, white skin cultivar, plate of 3 tubers
- 217. Potatoes, russet or netted cultivar, plate of 3 tubers
- 218. Potatoes, red or pink skin cultivar, plate of 3 tubers
- 219. Tomatoes, one cultivar, ripe, plate of 3 fruit
- 220. Tomatoes-Cherry or Grape, ripe, plate of 3 fruit
- 221. Tomatoes, one cultivar, green, outdoor grown, plate of 3 fruit (not Cherry)
- 222. Unusual vegetable (not commonly grown)
- 223. Zucchini, plate of 2 fruits
- 224. Apple, one variety, wiped clean, 3 fruits
- 225. Crabapple, one variety, wiped clean, 3 fruits
- 226. Fruit collection of 4 or more kinds, tame fruit locally grown, one or more cultivars of each kind, must be labeled.
- 227. Raspberries, plate of 4, stems attached
- 228. Rhubarb, 3 stalks, tied, of any one cultivar
- 229. Any fruit not listed, one variety, named, suitable number
- 230. Any vegetable not listed, plate of 3, named.



**High Point Vegetables & Fruits Trophy**  
**Horticulture Total High Point (i.e. Veg, Flowers & Fruit)**

A special thanks to the Alberta Horticultural Association for providing the certified horticulture judges.

\$50 award - Lac Ste. Anne County sponsor + Rosette - AHA Sponsor

**HOME BAKING, CANNING & PICKLING**  
**One entry in each class by any exhibitor.**

*All baking to be suitably displayed on heavy styrofoam or china plates or platters. All jars of fruits, vegetables, pickles, relishes, jams and jellies must have an adhesive label, specifying kind and date. All must have been put up within the previous 12 months.*

**HOME CANNING**

- 301. Vegetables, canned any kind, 1 jar only
- 302. Fruit, canned, any 2 kinds, 1 jar of each
- 303. Jam, any variety, 1 jar only
- 304. Jelly, any variety, 1 jar only
- 305. Dill pickles, 1 jar only
- 306. Beet pickles, 1 jar only
- 307. Pickled vegetables, any kind, 1 variety, 1 jar only
- 308. Relish, 1 jar only
- 309. Salsa, 1 jar only



**BAKING**

- 401. Pie, 2 crust, fruit filling – one piece, on small plate
- 402. Cookies, sugar type, rolled, plate of 3
- 403. Cookies, drop, any kind, plate of 3
- 404. Cookies, rolled, any kind, plate of 3
- 405. Cookies, shortbread, plate of 3
- 406. Single layer cake, frosting, (ie. carrot, zucchini, chocolate, etc.), one piece
- 407. Brownies, plate of 3
- 408. Hand-made bread, white, 1 loaf only
- 409. Hand-made bread, brown, 1 loaf only
- 410. Machine-made bread, white, 1 loaf only
- 411. Milk rolls, must not touch in pan while baking, plate of 3
- 412. Cinnamon rolls, standard method, unsalted sweet dough spread with cinnamon mixture, rolled and cut, not iced, plate of 3
- 413. Butter tarts, plate of 3
- 414. Tea Biscuits, plate of 3
- 415. Muffins, any kind, plate of 3
- 416. Candy – homemade varieties, includes fudge, plate of 3



**FARM PRODUCTS**

- 501. Honey, 1 jar, approx. 500 ml, unpasteurized
- 502. Chicken eggs, 1 dozen, white
- 503. Chicken eggs, 1 dozen, brown



## HANDIWORK & HANDICRAFTS

*Only one entry per person per class or entries will be disqualified. All exhibits must be work of the exhibitor and have been done during the past 12 months.*

### SEWING & CROCHETING

- 601. Any Sewn item
- 602. Any Crocheted blanket
- 603. Crocheted clothing and accessories (anything wearable)
- 604. Any other crocheted article

### QUILTS & QUILTING

- 701. Machine quilted, any size (judged on patchwork, not on quilting)
- 702. Quilted article – machine quilted (i.e. table runner, garments, wall hangings)
- 703. Quilted article – hand quilted (i.e. table runner, garments, wall hangings)

## HOBBIES, ARTS & PHOTOGRAPHY

- 801. Piece of art done in oils
- 802. Piece of art done in acrylic
- 803. Piece of art done in pastels
- 804. Piece of art, black and white, attractively mounted or framed
- 805. Piece of art in watercolours
- 806. Piece of art in coloured pencil
- 807. Piece of art, mixed medium
- 808. Greeting card, handmade
- 809. Scrapbook, 1 page, any theme, handmade
- 810. Scrapbook, 1 page, any them, computer generated

**PHOTOGRAPHS – Must be taken by exhibitor, 4x6" only and mounted on heavy white paper.** *Each picture must only be entered once, no matter the level (i.e. Adult, adult, junior or intermediate). Snapshots must not have been shown previously at the Darwell Fair. All photos to be in colour unless otherwise stated.*

- 901. Baby snapshot, up to 1 year old, taken within the last 2 years
- 902. Toddler snapshot
- 903. Photograph of child
- 904. Photograph of children
- 905. Photograph of individual
- 906. Photograph of senior (s)
- 907. Photograph of group/family
- 908. Funny animal photo
- 909. Action shot
- 910. Agriculture related photograph
- 911. Scenic photograph, taken anywhere other than Canada
- 912. Animal photograph in colour
- 913. Wildlife garden visitors (i.e. birds, mammals, insects, etc.)
- 914. Flower photograph, close up
- 915. Photograph – sunrise or sunset
- 916. Weather (exceptional or abnormal)
- 917. Black & White photo, of any category listed above

## SCHOOL WORK

*All work must be done by the exhibitor in the most recent school year.  
Exhibit will be disqualified if not entered in the proper grade.*

Ao Bb Cc Dd Ee Ff Gg Hh Ii Jj Kk Ll Mm

### PRE-SCHOOL

- 1001. Art - Painting
- 1002. Art - Colouring page from book
- 1003. Any type of craft
- 1004. Recycled article, of any medium

### GRADE ONE

- 1101. Printing
- 1102. Art - Painting
- 1103. Art - Sketching (drawing)
- 1104. Any type of craft
- 1105. Recycled article, of any medium

### GRADE TWO

- 1201. One space printing
- 1202. Art - Painting
- 1203. Art - Sketching (drawing)
- 1204. Any type of craft
- 1205. Recycled article, of any medium

### GRADE THREE

- 1301. Illustrated story or poem, original, not over one page
- 1302. Art - Painting
- 1303. Art - Sketching (drawing)
- 1304. Any type of craft
- 1305. Recycled article, of any medium

### GRADE FOUR

- 1401. Handwriting
- 1402. Art - Painting
- 1403. Art - Sketching (drawing)
- 1404. Any type of craft
- 1405. Recycled article, of any medium

### GRADE FIVE

- 1501. Handwriting, short story
- 1502. Art - Painting
- 1503. Art - Sketching (drawing)
- 1504. Any type of craft
- 1505. Recycled article, of any medium

Nn Oo Pp Qq Rr Ss Tt Uu Vv Ww Xx Yy Zz

## JUNIOR SECTION

12 years of age and under, as of the day of the show. Please put your AGE on exhibits and enter in the proper class or they will be disqualified.

Entry fee – 25¢ per entry.

Junior exhibitors may also enter all general bench show classes

### BAKING / COOKING

- 1601. Decorated cupcakes, birthday theme, plate of 3 (judged on decorating)
- 1602. Muffins, any kind, plate of 3,
- 1603. Drop cookies, any kind, baked, plate of 3
- 1604. Brownies, plate of 3, not iced



### HORTICULTURE

**Note:** Junior entries may be taken from the family garden. To prepare your entries refer to **Helpful Hints for Horticulture Exhibits**

- 1701. Carrots, plate of 3 roots
- 1702. Peas, plate of 3 pods
- 1703. Any other vegetable, one kind, number as per adult classes (i.e. beans, plate of 3)
- 1704. Collection of 5 different vegetables, one of each on a plate
- 1705. Any fruit, 1 variety, named



### HANDICRAFTS

- 1801. Hand crafted novelty item, any medium
- 1802. Beading
- 1803. Card making, any occasion
- 1804. Playdoh Sculpture
- 1805. Any piece of woodwork (i.e. birdhouse, ornament)
- 1806. Piece of art, black and white, using ink, pencil or charcoal, ages 11 & over
- 1807. Painting, any medium, 10 & under
- 1808. Painting any medium 11 & over
- 1809. Sketching, 10 & over
- 1810. Colouring Page done in crayon, 10 & under (pencil or wax)
- 1811. Any building block construction – original design only (i.e. Lego, Meccano)
- 1812. Diorama, any theme, in shoebox or similar box

**PHOTOGRAPHS – Must be taken by exhibitor, 4x6” only and mounted on heavy white paper.** Each picture must only be entered once, no matter the level (i.e. Adult, junior or intermediate). Snapshots must not have been shown previously at the Darwell Fair. All photos to be in colour unless otherwise stated.

- 1901. Photograph of a pet
- 1902. Flower photograph, close up
- 1903. Photograph of individual
- 1904. Photograph of child or children
- 1905. Scenic photograph
- 1906. Selfie, no filters

**Junior (12 & under) High Point Award \$25.00 - DDAS sponsor**

## INTERMEDIATE SECTION

13-18 years old as of day of show. Please put your AGE on exhibits and enter in the proper class or they will be disqualified.

Entry fee – 25¢ per entry

Intermediate exhibitors may also enter all general bench show classes

### BAKING / COOKING

- 2001. Drop cookies, any kind, plate of 3
- 2002. Brownies, plate of 3
- 2003. Decorated Cupcakes, plate of 3
- 2004. Muffins, any kind, plate of 3
- 2005. Pie, 2 crust, fruit filling, 1 piece, on small plate



### HORTICULTURE

**Note:** Intermediate entries may be taken from the family garden. To prepare your entries refer to **Helpful Hints for Horticulture Exhibits**

- 2101. Carrots, plate of 3 roots
- 2102. Peas, plate of 3 pods
- 2103. Any vegetable, one kind, number as per adult classes (i.e. beans, plate of 3)

### HANDICRAFTS

- 2201. Recycled article, any medium
- 2202. Sketching, using ink or pencil
- 2203. Sketching, using charcoal
- 2204. Painting, any medium
- 2205. Scrapbooking, handmade, 1 page, any theme
- 2206. Scrapbooking, computer made, 1 page any theme
- 2207. Crocheted article
- 2208. Diorama, any theme, in a shoebox or similar box



**PHOTOGRAPHS – Must be taken by exhibitor, 4x6” only and mounted on heavy white paper.** Each picture must only be entered once, no matter the level (i.e. adult, junior or intermediate). Snapshots must not have been shown previously at the Darwell Fair. All photos to be in colour unless otherwise stated.

- 2301. Wildlife photograph
- 2302. Photograph of a pet
- 2303. Action shot
- 2304. Flower photograph, close up
- 2305. Photograph of individual
- 2306. Photograph of child or children
- 2307. Photograph of group/family/class
- 2308. Photograph related to agriculture
- 2309. Funny animal photo
- 2310. Weather (exceptional or abnormal)
- 2311. Scenic photograph
- 2312. Selfie, no filters
- 2313. Sepia Photo of any of the categories above

**Intermediate (13-18 yr) High Point Award - \$25.00 DDAS Sponsor**

**Overall Bench Show High Point Trophy**



## PARADE

### Theme: Tractors, Plows and Cows

Saturday, August 20<sup>th</sup>

Judging at 9:30 a.m. Saturday at Darwell School Parking Lot

Starting Time: Saturday 10:00 a.m.

Parade Marshal – Maria & Robert Smith

### Concession Vouchers

All participants will receive a concession voucher to be used on parade day only.

Ribbons for 1<sup>st</sup> - 2<sup>nd</sup> - 3<sup>rd</sup> will be given for parade classes

**NO PRE-REGISTRATION NECESSARY**

Please use the South parking lot entrance at the school and proceed as far as possible to the North entrance.

The Parade Route will be clearly marked.

Come one come all, and let's show everyone what our community spirit looks like.

Commercial Float

Group Float

Clown

Best Decorated Bicycle

Most Original Idea or Costume

Musical Group (marching or riding)

Best Decorated Horse

Child on Horse (12 years and under)

Class for Best Appearance of Rider's Costume and Equipment

Best Riding Group

Best Decorated Team of Horses

Best Antique or Classic Auto

Best Subdivision or Summer Village Float

Thank you **Stone Cold Crane Services Ltd.** for sponsoring the parade.

## FARMER OLYMP-HICKS

Saturday, August 19<sup>th</sup> 11:00 a.m.

Skating Rink

### FREE EVENT

Participants must be 16 years of age or over.  
Please register at the skating rink - first come, first served  
maximum of 20 participants.

Prize Money: 1<sup>st</sup>-\$100; 2<sup>nd</sup>-\$75; 3<sup>rd</sup>-\$50

### Expected List of Events

1. Square Bale Tossing
2. Picking Rocks
3. Nail Pulling
4. Sand Bucket Hauling
5. Tire Flipping

Rules and Final Event List will be posted on event day.

## GREASED PIG CONTEST

Saturday, August 19<sup>th</sup> 1:00 p.m.

Skating Rink

Age groups:

9 years & under

10-14 years

15+ years

The participant that catches the pig, wins the pig!







**CORNHOLE TOURNAMENT**

**\$10/PER TEAM**  
NO EXPERIENCE NEEDED  
FIND A PARTNER  
AND  
ENTER

**WIN**

**1ST - 30% POOL**  
**2ND - 20% POOL**  
**3RD - 15% POOL**

**LET THE PLAY BEGIN!**

**AUGUST 19, 2023**  
**SATURDAY 10AM-4PM**  
DARWELL FAIR GROUNDS  
SIGN UP STARTS AT 10 AM

**SEE YOU THERE!**

## Cornhole Game Rules:

A cornhole board's surface should be 2-foot x 4-foot.

- There should only be 8 cornhole bags with 4 bags of each color.
- Each cornhole bag is 6 inches by 6 inches and holds one pound of corn.

### Player rules:

- Bags must be pitched underhand.
- Feet must be behind the line at the front of the board when the bag is released.
- The team/player must stay in their lane (left or right) of the board for the whole game. Changing sides is not permitted.
- Two teams of two people or partners play at one time.
- Each set of cornhole partners will have 4 bags of one color.
- All 8 cornhole bags begin at one end.
- Partners shall stand at opposite cornhole boxes on the same side, from the perspective of a third person, and face each other, so there is no advantage given to one team.
- A coin flip will decide which team has honors in round one.
- One of the partners on the team who has honors will begin the game by throwing a cornhole bag at the opposite cornhole box.
- The next round starts when the other cornhole player on the team, which has honors, throws their first cornhole bag.
- A cornhole player may throw from anywhere behind the front of the cornhole box they are throwing from.
- Once the game starts, it continues by alternating throws between the two opponent players until all 8 cornhole bags have been thrown.
- If a cornhole bag hits the ground then bounces up onto the board, that bag shall be taken off the playing surface.

### A foul occurs when any of the following happens:

- A cornhole player's foot goes past the foot foul line, termed a foot foul.
- A player goes out of turn.
- The player who caused the foul loses the throw when the foul happened, and the bag will be removed if it landed on the playing surface.

The score shall be taken after all cornhole bags have been thrown for a round. The team that reaches 21 or more points first wins! Points shall be given as follows:

- 3 points for a cornhole bag that goes through the hole.
- 1 point for a cornhole bag that is on the playing surface.
- 1 point for a cornhole bag that is hanging into the hole.
- 1 point for a cornhole bag that is hanging off the edge but not touching the ground.
- 0 points for a cornhole bag that is on the playing surface, but also touching the ground.
- 0 points for a cornhole bag that is hanging off the front edge and is resting on a cornhole bag that is on the ground. If the cornhole bag on the ground can be removed without making the hanging bag fall to the ground, then 1 point is given.

How the final score is calculated:

- The cornhole team with the highest round score adds the difference of the two scores to their game score.
- The cornhole team who wins the round is given honors to throw first in the next round.
- If both cornhole teams have the same round score, then the game score stays the same and honors stays with the team who had it the previous round.



**Become a Paid-on-call Firefighter**

BECOME PART OF SOMETHING BIGGER.

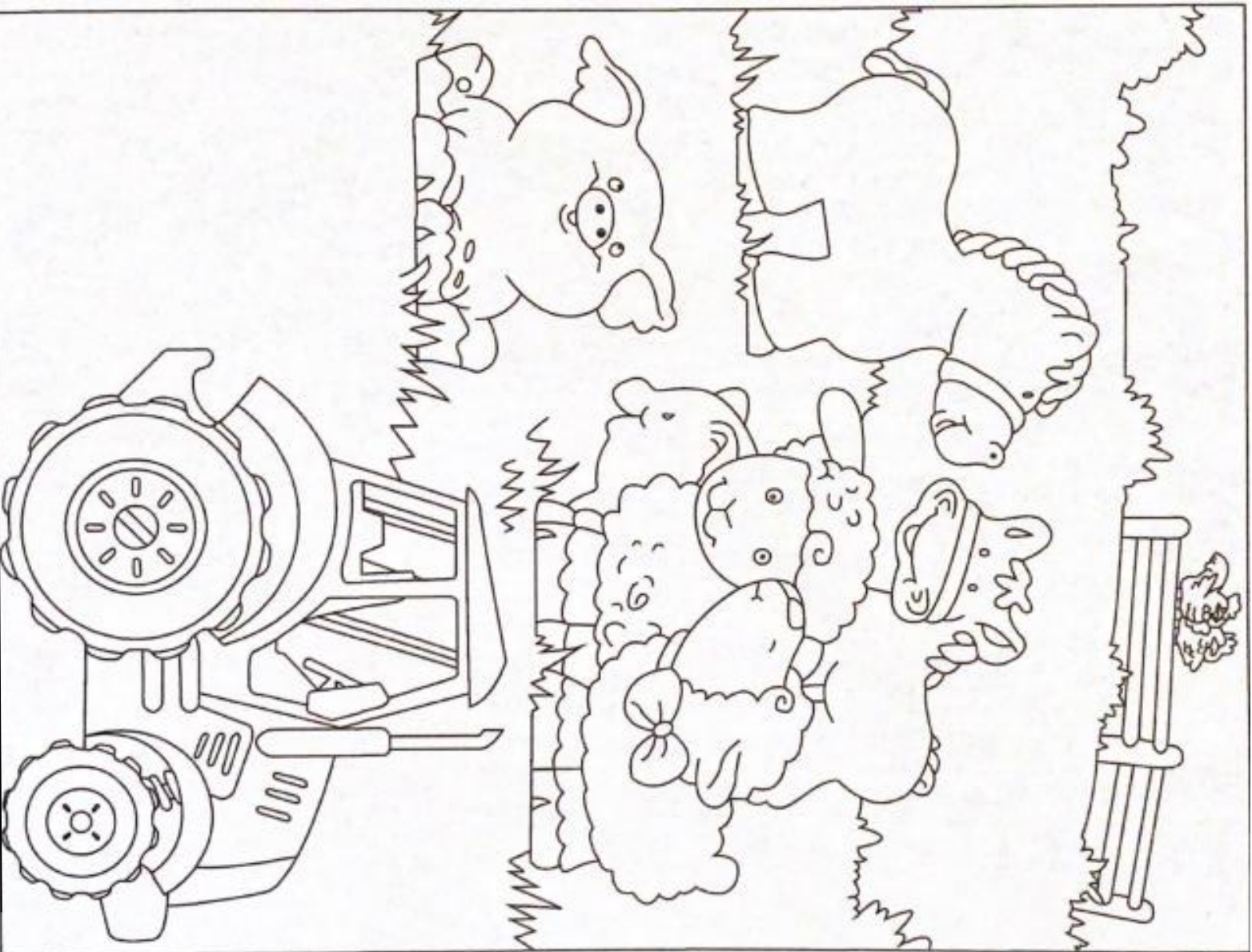
**JOIN**

LAC STE. ANNE COUNTY

1.866.880.5722

CountyFire.ca

# Colouring Contest



**ALL AGES COLOURING CONTEST .** Colouring Page Entries to be dropped off at Darwell Ag Grounds Gazebo on August 19/23 by 1pm. Four winners will be drawn randomly on August 19/23. Winners will be contacted by phone if not present. A \$10 Tim Horton's gift card, donated in memory of Troy Pearce, will be awarded to each winner.

Name: \_\_\_\_\_ Phone: \_\_\_\_\_

# 16th Annual Outdoor Concert

Darwell & District Agricultural Society presents...

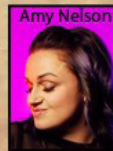
# BARNBURNER MUSIC FEST August 11th, 2023



Special guests



Matt Lang



Amy Nelson

## Darwell Fair Grounds Gates 6pm>Show 7pm

**Advance \$50 / Door \$60** 5 and under free

Tickets at: <https://darwellag.simpletix.ca>

Concession, Beer Gardens & Camping Available

Bring your own lawn chair / rain or shine

Ag Drag August 12 & 13 - \$20 Advance/\$25 door



scan for tickets



[www.darwellag.com](http://www.darwellag.com)



# DARWELL WOMEN'S INSTITUTE



DARWELL WOMEN'S INSTITUTE, formed in 1945, is a branch of Alberta Women's Institute, Federated Women's Institutes of Canada, and the Associated Country Women of the World. At monthly meetings we discuss issues particularly related to families and our community and seek ways to help them. We exchange ideas, information, recipes, and patterns, and take part in a yearly handicraft competition. Speakers, or reports on topics of interest offer information and solutions.

Working with Darwell School, Darwell Fire Department, Darwell & District Agricultural Society, Senior's Society and Darwell Public Library, we often just lend a hand, provide items needed and/or financial help. We have sponsored Babysitter Training, First Aid and CPR courses, a very large and successful Y2K emergency measures evening, candidate forums, and other public open houses and workshops. We host a yearly cemetery cleanup and hang a memorial wreath for Remembrance Day. Various teas and ticket sales have provided funding to many community projects. Recently we planted a memorial tree in the cemetery and donated raised gardens to the Senior's Residence at the Manor. And for the past number of years we have served fresh treats at the Darwell Fair Bench show.

Contact: Wendy MacDonald 780-217-7288

## DARWELL PUBLIC LIBRARY USED BOOK SALE August 19<sup>th</sup>: 9 AM - 4 PM

Check out our website or Facebook page for information on all our summer events

Library hours

Mon, Tues, Thur: 11 AM - 4 PM

Wed & Fri: 5 PM - 8 PM

Website: [www.darwellpubliclibrary.ab.ca](http://www.darwellpubliclibrary.ab.ca)

Facebook: Darwell Public Library

Phone: 780-892-3746



## DARWELL FIREMANS BALL

Saturday, November 4, 2023

Darwell Centennial Hall

Doors open at 5:00 pm

Tickets \$50

\*This is an adults only event\*

# A special thank you to all of the volunteers who make this event possible.



## Helpful Hints for Horticulture Exhibits

The judges will be guided in making their decisions by the printed prize list. Judges will give preference to cultivars correctly named. (Cultivar is a horticultural variety e.g. 'Sunny Vee' is a cultivar of corn). All exhibits must be clean and free of insects and diseases.

### Flowers

With the exception of decorative arrangements the flowers are judged for quality. The artistic arrangement of exhibits in Cut Flower classes does not count. Containers such as salad dressing jars work well. Size in the individual blooms is desirable but the quality, form and cleanliness is just as important and should not be passed up in order to pick the largest bloom. Damage to petals will cause the loss of many points.

**Gladiolus** should have a straight spike and be cut to have the total stem approximately half the length of the flower head. Florets should be evenly spaced and in balance. Measurement refers to diameter of lowest floret.

**Roses** are considered at their peak just as the second set of petals start to unfurl. A good length of straight stem, carrying some foliage is desirable. The stem should reach the bottom of the container. Side buds must be removed in the Single Rose class.

**Sweet Peas** should have long stems that are straight and firm. Size, texture, freshness, and number of florets open are important.

**Asters, Dahlias, Marigolds and Zinnias** should have the centres full (except in the single varieties) and should be free of wilting outer petals.

**Pansies** should be a uniform size, not touching in the display.

**Snapdragon** spikes should include no side spikes.

### Vegetables

**Beans** have pods of good length, uniform in size, fresh and free from stringiness; seed should not be fully developed.

**Beets** not over 7.6 cm in diameter; dark red inside and out, free from light coloured rings in centre; free of side roots; crown small and free of splits, scaling, sunburn. Tops removed 1.3 cm from crown.

**Carrots** smooth and straight, free from side roots, injury, and sunburn; small core; clean. Tops removed 1.3 cm from crown.

**Cabbage** heads of medium size, heavy and firm shape true to type; remove stem and outer damaged leaves, 1-2 wrapper leaves attached.

**Cauliflower** heads about 20 cm in diameter; curds should be white and compact, smooth and regular, with no leaves showing through the head; remove stock and large leaves, trim remaining leaves to 1 cm above curd.

**Corn** in fresh, edible condition; uniform size, evenly filled tip to base with straight rows of well-developed kernels. About 1/3 of the husk removed from the tip to base.

**Cucumbers** uniform in size, shape and colour; free from blemishes fresh, firm and seed not well developed; show little tapering at ends, 1 cm stem attached. Slicing cultivars at least 15 cm long.

**Lettuce** leaves washed, tender and sweet; roots and small or damaged outer leaves removed, shown in water.

**Onions** firm; uniform colour, size, shape and maturity; tops and roots trimmed to 1.3 cm from bulb; only jagged and dirty outer scales removed.

**Pea** pods large, fresh, uniform and well filled; peas large, whole, uniform, sweet and in good colour; stem and calyx attached.

**Potato** shape and colour uniform, typical of cultivar; tubers smooth with few and shallow eyes, firm and medium size; no sunburn or secondary tubers; can be cleaned with a soft brush.

**Tomatoes** smooth, uniform in size, shape and colour; stem attached. Green-ripe preferred in green class.

**Zucchini** uniform in colour; trim stems to 1 cm; maximum length of 20 cm.

### Fruit

**Fruit** collections should have fruits at their peak; avoid overripe fruit; should be clean, free of blemishes, arranged attractively; stems attached. Fruits must be named, points awarded for cultivar names. Does not include rhubarb.

**Rhubarb** tops trimmed to fan shape about 2.5 cm long; stalks uniform, about 45-50 cm long; colour uniform over length; only trim rough edges at base, and tied as a bunch.

For more details on preparing bench show entries refer to:

**Judging Standards for Horticultural Shows**, available from Alberta Agriculture, Food & Rural Development, or on loan from the Darwell Public Library.

# ANIMAL HEALTH CONSIDERATIONS FOR EXHIBITORS

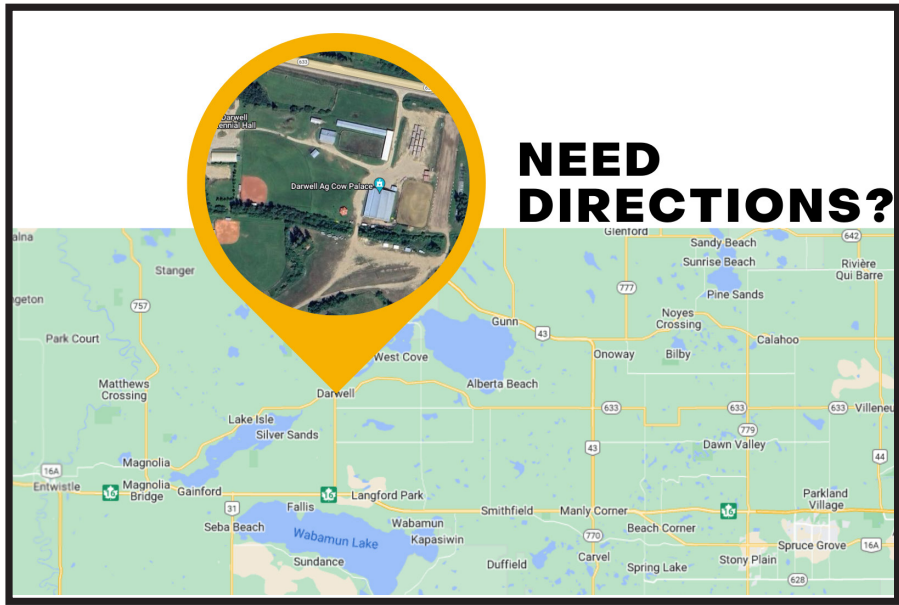
These notes are provided to all exhibitors as guidelines for the health and well being of animals entered at the Darwell Fair. Although testing is not mandatory for many animal diseases exhibitors should consider themselves responsible for bringing healthy animals.

Some considerations for your livestock should include:

**Equine** – Horses should be vaccinated with a 5 way shot (tetanus, EEE, WEE) as well as Flo/Rhino. Vaccinations should be done within 6 months before the exhibition. Consider de-worming your horse within 3 months before the fair. If your horse has been sick within the previous 10 – 14 days before the fair or had any lymph nodes swelling contact your veterinarian to check the animal before the fair.

**Cattle** – Cattle should come to the fair free of lice, warbles and ringworm. All of these conditions can be contagious and should be treated before shows to the point where there is no visual evidence of the disease. Cattle should be free of respiratory disease and should show no evidence of lameness from foot rot, corns, etc. Vaccination for cattle diseases such as IBR, BVD, P13 and haemophilus are optional and the exhibitors' veterinarian should be consulted on the treatment and prevention of the above conditions. Cattle should be treated for internal and external parasites at least 7 – 10 days before the fair with a broad-spectrum agent such as Ivomec injectable or pour-on. All cattle must also have CCIA Tag.

The key is to bring healthy stock only. If all exhibitors bring only healthy stock we all benefit by avoiding taking problems home. The above lists are by no means complete, but by observing for common problems we all do our part to make this an enjoyable and disease-free fair.



# NEED DIRECTIONS?

## Interlake Golden Age Club Darwell Citizens

### Welcomes Everyone To:

- Tuesday afternoons gathering pool & card games
- Friday Crib Nite 7:00 p.m. - 10:00 p.m.

**Hall rental also available**  
**Deb McDonald 780.785.2907**



JULY 22, 2023 | [www.darwellag.com](http://www.darwellag.com)

# CATTLE

## RULES AND REGULATIONS

**NOTE:** Changes to the 2022 Rules and regulations.

1. Entries for Cattle Show must be entered by 10:00 a.m. Sunday of show day.
2. Judging of the Cattle Show will begin at 11:00 a.m. immediately following the Junior Show.
3. Entry Fee: \$6.00 per class.
4. Animals must be halter broke and on halter. Any entry not properly halter broke will be excused from the ring.
5. Bulls one year and older MUST have a ring or locking humbug.
6. Cattle will be shown and displayed in the area provided. Stalls in the shed are allotted as entries are received.
7. Only Judges, Ring men and Showmen are allowed in the ring during the judging of the class.
8. Trophies and cash prizes will be presented at the end of each class.
9. All cattle must be registered or recorded with the exception of commercial classes.
10. Livestock manifest will be required for all cattle.
11. No cattle may leave the grounds until 3:00 p.m.
12. Birth dates must be provided for all calf classes.
13. Unethical fitting of livestock entered for competition is prohibited.
14. All cattle must have a CCIA tag.

### \$ Morand Industries and Darwell Ag Society Prize Draws \$

**4 prizes of \$500** in Morand Gift Certificates to be drawn after the Cattle Show — One entry per participating farm family

**5 prizes of \$100** cash for participating juniors, must show in one or more junior class.—One entry per participant

Darwell & District Ag. Society reserves the right to make any and all official decisions regarding these draws.

## CATTLE SHOW

Sunday, August 20, 2023

Entry Fee **\$6.00 per class**

PRIZE MONEY 1<sup>st</sup> - \$20 2<sup>nd</sup> - \$15 3<sup>rd</sup> - \$10

Cattle show entry form in centre of book

Judging at 11:00 a.m. Sunday

In all classes, 4 or more of any breed will form their own class for ribbons only.  
The top 3 animals of all split classes will advance to a final class.

Prize money will then be paid to 3<sup>rd</sup> place.

### JUNIOR SHOWMANSHIP

1. Beef Showmanship – 14 to 18 years old **Cody Kettleon Memorial**
2. Beef Showmanship – 10 to 13 years old.
3. Beef Showmanship – 9 years and under. **A. Featherstone Memorial**

### JUNIOR FUTURITY (4-H & Junior) - 21 years and under.

4. Heifer Calf, born after Jan. 1, current year, commercial/purebred.
5. Bull Calf, commercial/purebred.
6. Yearling Heifer, commercial/purebred.
7. Cow with Calf at foot, commercial/purebred.

### PUREBRED OPEN BEEF SHOW

8. Heifer Calf, born January 1<sup>st</sup> of calendar year
9. Yearling Heifer
10. Two year old female with calf at foot
11. Female – 3 years old and older, with calf at foot
12. Grand Champion Female  
1<sup>st</sup> and 2<sup>nd</sup> place winners of classes 8,9,10,11 to compete
13. Reserve Grand Champion Female **Dale McDonald Memorial**
14. Bull Calf born on or after January 1<sup>st</sup> of the calendar year
15. Yearling Bull.
16. Two year old Bull
17. Herd Sire 3 years old or over
18. Grand Champion Male  
1<sup>st</sup> and 2<sup>nd</sup> place winners of classes 14, 15, 16, 17 to compete
19. Reserve Grand Champion Male **Gerald Ambrose Memorial**
20. Breeders Herd – 3 animals, both sexes represented, any age, bred and owned by the exhibitor

### COMMERCIAL OPEN BEEF SHOW

21. Heifer Calf, born on or after January 1<sup>st</sup> of the calendar year
22. Steer Calf, born on or after January 1<sup>st</sup> of the calendar year
23. Yearling Heifer
24. Two year old female with calf at foot
25. Female – 3 years old and older, with calf at foot

# HORSES

## RULES AND REGULATIONS

1. The show is open to all horses, but the D.D.A.S. Horse Show Committee reserves the right to refuse any entry.
2. All exhibitors shall wear the number assigned to them.
3. No substitutions of entries will be allowed without a veterinary certificate.
4. Veterinarian or Doctor's certificate are mandatory for refund of entry fees. All classes otherwise must be paid in full.
5. Entry forms must be complete. Please ensure your entry form is legible. Exhibitors are reminded that they are responsible for any errors or omissions on their entry form. Parents or Guardians must sign if exhibitor is under 18 yrs.
6. Stallions are not to be handled by anyone under the age of 18 years.
7. Classes may be cancelled, combined or further divided at the discretion of the Show Committee.
8. The rider's age is taken from the rider's last birthday. The horse's age is determined as if it was born on January 1st of the birth year.
9. Nervous Novice – Riders who have not won a 1st or 2nd in an under saddle class requiring horses to canter, prior to the current year. Lope/Canter required.
10. Junior horse is 5 years and under.
11. All scratched horses and classes to be reported to the Gate Person.
12. Inhumane treatment will not be tolerated and unruly horses may be excused from the show.
13. Gate holds must be requested prior to the class. Exhibitors will not be allowed entry after the class has started.
14. Trail will be held in a separate ring. It is the responsibility of the exhibitor to complete the class.
15. Trail is limited to 3 refusals per obstacle. Western or English attire will be accepted.
16. Cross Entries: Walk & Trot entries may enter any halter classes but are limited to the following performance classes: #12, #23 and #24. Nervous Novice entries may enter any of the classes #1-5, classes #10, #17, #18, #21, #31, #32, #33, #38 and #39.
17. Patterns will be posted at the show office the morning of the show.
18. Western attire consisting of boots, jeans, long-sleeved shirt and hat/helmet must be worn for all western classes. Chaps and spurs are optional. **Mandatory approved helmet will be required for all riders not of majority age.**
19. No martingales, tie-downs or mechanical hackamores are allowed in any class.
20. Entries must be serviceable, sound and in good condition. Ill or unsound animals will be asked to leave the show.
21. The decision of the Judge, Steward, and Show Committee is final in all classes or events. Judge may call the cancellation of show due to weather conditions.

## General Information

Entries accompanied by cheque or money order for all full entry fee should be mailed by August 11, 2023. All cheques or money orders are payable to **Darwell & District Agricultural Society**.

Entries should be mailed to:

D.D.A.S. Horse Show  
PO Box 99  
Darwell, AB T0E 0L0

Email entries will be accepted until Friday, August 18, 2023. Entries can be emailed to [ddashorseshow@yahoo.ca](mailto:ddashorseshow@yahoo.ca). Late entries accepted until show date with a late fee enforced. Late entries will be \$12/class. No exceptions.

1. All late entries close on the morning of show day at 8:30 a.m. SHARP. All outstanding fees to be paid prior to 8:30 a.m.
2. There will be no refund of entry fee after the official closing date of entries except with a veterinary/doctor's certificate.
3. Cash prizes for 1st, 2nd and 3rd. Please pick up prize money at the end of the day any not claimed goes to D.D.A.S.
4. Overnight camping is available upon request.
5. Stabling is available on a first pay basis. Please make sure your entry form indicates the need for stabling.
6. **Stall rental** is \$20/stall for the day with \$10 refund upon cleaning the stall to the satisfaction of the Show Committee. The \$10 refundable deposit must be on a separate cheque from entry fees for refund. One horse per stall only. First paid first served.
7. It is understood that each entrant by the act of entry or exhibition waives all claims against the Darwell & District Agricultural Society, its officers, members or show committee of any or all injuries arising from exhibiting or operation of the show.
8. We reserve the right to combine or cut classes if the number of entries warrants it. Classes with high numbers may be split to facilitate more equitable judging. Classes with fewer than three (3) horses may be cancelled and entry fee money refunded.

## HORSE SHOW

Horse Show starts Sunday, August 20, 2023 at 9:00 a.m. (no exceptions)

*Classes may not be in the order presented.*

*Please pay attention to the announcer!*

ENTRY FEE

**\$10/class/horse OR \$50/day/horse**

LATE ENTRY FEES - **\$12/per class** (no day rate)

PRIZES: 1st place - \$15; 2nd place - \$10; 3rd place - \$5

*(Prize money must be claimed at end of day - any unclaimed money goes back to D.D.A.S.)*

### HALTER CLASSES

1. Current Year Foal
2. Yearlings
3. Two & Three Year Olds
4. Four Years & Over – Gelding
5. Four Years & Over – Mares
6. Grand & Reserve Champion (1st & 2nd from classes 1-5)
7. Showmanship, 12 Years & Under\*
8. Showmanship, 13-18 Years\*
9. Showmanship, 19 Years & Older\*
10. Showmanship, Nervous Novice\*
11. Lead Line Class, children 3-6. No cross entry to other ridden classes.

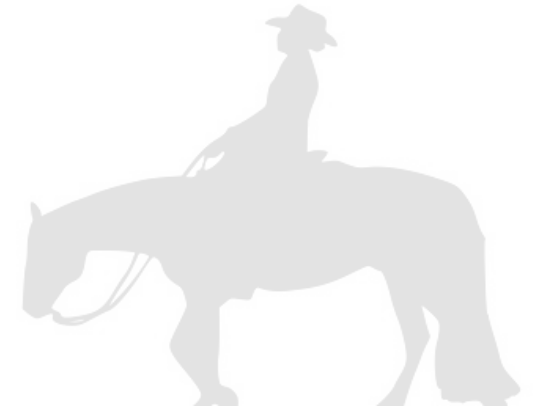
### PERFORMANCE CLASSES

12. English Equitation, Walk & Trot
13. English Pleasure, 12 Years & Under\*
14. English Pleasure, 13-18 Years\*
15. English Equitation, 12 Years & Under\*
16. English Equitation, 13-18 Years\*
17. English Equitation, Nervous Novice\*
18. English Pleasure, Nervous Novice\*
19. English Pleasure, 19 Years & Over\*
20. English Equitation, 19 Years & Over\*
21. English Junior Horse, Open
22. Poles & Cavalettis, Walk & Trot
23. Jumper – 2', Open
24. Western Equitation, Walk & Trot
25. Western Pleasure, 12 Years & Under\*
26. Western Equitation, 12 Years & Under\*
27. Western Pleasure, 13-18 Years\*
28. Western Equitation, 13-18 Years\*
29. Western Pleasure, 19 Years & Over\*
30. Western Equitation, 19 Years Over\*
31. Western Equitation, Nervous Novice\*
32. Western Pleasure, Nervous Novice\*

33. Western Junior Horse, Open
34. Reining, Open
35. Trail, 12 Years & Under\*
36. Trail, 13-18 Years\*
37. Trail, 19 Years & Over\*
38. Trail, Nervous Novice\*
39. Trail, In Hand

### FUN CLASSES

40. Turn and Burn Race
41. Egg and Racquet Race
42. Flag Race
43. Toilet Paper Race



**High Point Prizes for Categories:** 12 & Under, 13-18 Years, 18 Years & Over and Nervous Novice. Classes starred are used to calculate high point.

Established in 2000, Scorpion Aggregates is a leading construction materials company serving large scale builders and construction contractors in the Edmonton area.

**Scorpion Aggregates - 780.960.0757**

## Darwell & District Recreational Association

**Monthly Meetings** - Every second Monday of each month at Darwell Centennial Hall 7 PM.

**Community Information Night** - Friday, September 1, 2023, 2 - 4 PM

**Fall Harvest Dance** - Saturday, September 30, 2023

Hall rental also available - Deb Stewart 780.892.2468





Darwell & District Agricultural Society  
present the 27<sup>th</sup> Annual

# Darwell Ag Drag

Modified Truck and Tractor pull

Saturday, August 12<sup>th</sup> - 5:00pm, Gates open 4:00pm

Sunday, August 13<sup>th</sup> - 11:00am, Gates open 10:00am

Beer Gardens

Carstar Onoway (Jack's Auto Body)  
SANG

Dave's Diesel Repair  
EQUS  
Fortis  
Grande Tire  
H & P Kosik  
Lac Ste. Anne County  
Morand Industries  
MD Truck Repair

Blakemen Drilling  
Country Automotive

Big West Country  
Border Paving Ltd.  
CFCW  
CISN Country - 103.9  
Herc Rentals  
Martin Deerline  
Silver Sands Golf Resort  
Tractor Ranch/Envoy Rentals  
XM105 FM Whitecourt



50/50 draw

SCAN ME



Tractor Pull  
Advanced \$20/Gate \$25  
5 and under.... Free  
[www.darwellag.com](http://www.darwellag.com)

## Competition Chevrolet & Darwell Ag Society Presents 27<sup>th</sup> Annual Darwell Ag Drag

Advance \$20/Gate \$25

(limited capacity - first come, first served)

kids 5 and under free

**Saturday, August 12, 2023 at 5:00 p.m. (rain or shine)**

Gates and Concession - open at 4:00 p.m.

**Sunday, August 13, 2023 at 11:00 a.m. (rain or shine)**

Gates and Concession - open at 10:00 a.m.

### Antique Tractors:

Production must have started before 1960.

Hitches must remain at stock height.

Operator must remain seated at all times.

Tractors will be separated into horsepower classes at the time of the pull.

No external weights.

Owners should provide their own clevises.

### Street 4X4 Trucks:

Truck must be D.O.T. legal (need to be licensed).

No external weights.

Truck bed must be empty - NO SLIP TANKS.

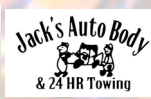
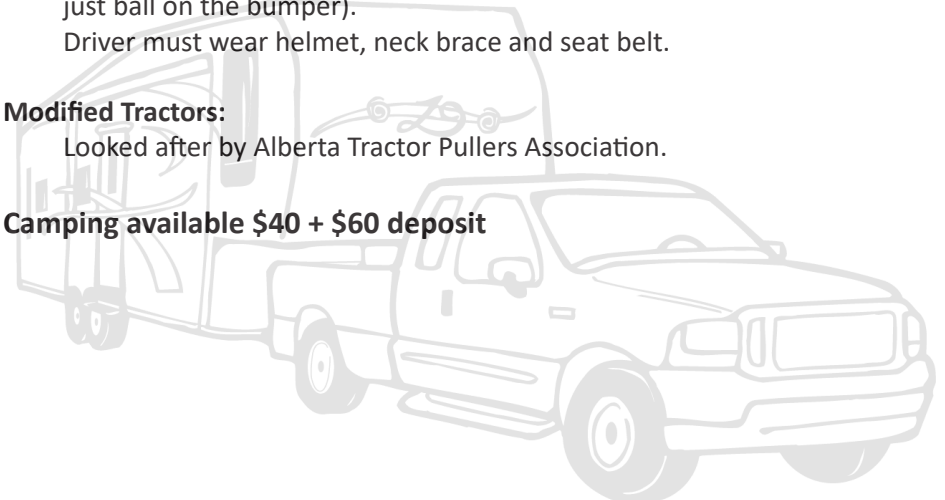
Hitch must be securely attached to the frame (a receiver style hitch not just ball on the bumper).

Driver must wear helmet, neck brace and seat belt.

### Modified Tractors:

Looked after by Alberta Tractor Pullers Association.

Camping available \$40 + \$60 deposit







## DARWELL FAIR BENCH SHOW

**Saturday, August 19<sup>th</sup> Judging Starts at 9:30 a.m.**

Hall hours

Pre-entries and exhibits will be accepted at the hall on Saturday, August 19 from 7:00 a.m. – 9:15 a.m.

Fees

Adults: \$2.00 for first entry and 50¢ for each additional entry.

Junior and Intermediate: 25 ¢ per entry and no charge for Schoolwork entries

For rules governing various sections see fair book index. Entry forms must be completed and submitted to appropriate convenor prior to judging. EACH PERSON MUST complete a form for classes he or she is entering.

SECTION EXHIBITOR IS ENTERING

**FAIR BENCH SHOW ENTRY FORM**

Junior/Intermediate \_\_\_\_\_ Adult \_\_\_\_\_

CLASS#	CATEGORY	NAME OF EXHIBIT	FEES

NAME OF EXHIBITOR \_\_\_\_\_ TOTAL \_\_\_\_\_

ADDRESS \_\_\_\_\_

PHONE NUMBER \_\_\_\_\_

Are you presently engaged in the production  
of agricultural products? Yes \_\_\_\_\_ No \_\_\_\_\_