



SUPPORTING **NATIVE AMERICAN** STUDENTS

MICHELLE MARTINEZ & AMBER NAVARRO
CHAPMAN UNIVERSITY

PRESENTATION AGENDA

01 YOU'RE ON NATIVE LAND

Land Acknowledgment and defining Native American students

02 HISTORICAL CONTEXT

Genocide, oppression, erasure

03 STATISTICS

Current state of educational outcomes for Native students

04 IMPLICATIONS & SUPPORT PROGRAMS

Best practices & College/Career Support programs



01

YOU'RE ON NATIVE LAND

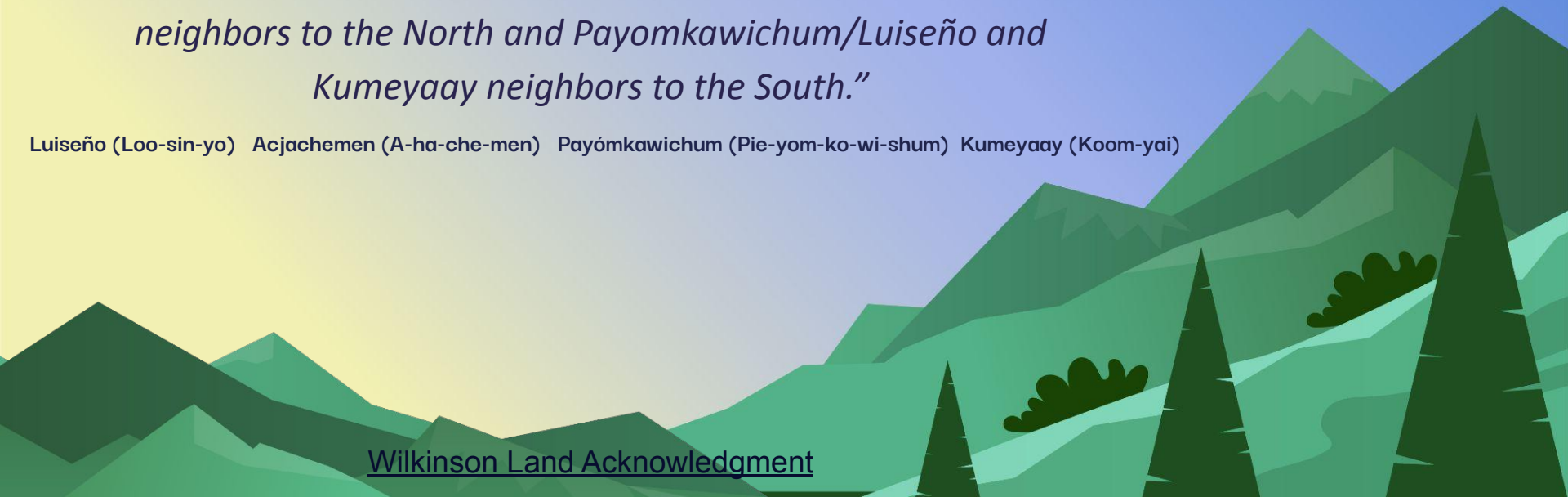
Understanding what it means to
occupy this space

LAND ACKNOWLEDGMENT

“We acknowledge that Chapman University occupies the ancestral, traditional, and contemporary Lands of the Acjachemen Peoples in the Juaneño Territory, adjacent to our Tongva/Kizh neighbors to the North and Payomkawichum/Luiseño and Kumeyaay neighbors to the South.”

Luiseño (Loo-sin-yo) Acjachemen (A-ha-che-men) Payómkawichum (Pie-yom-ko-wi-shum) Kumeyaay (Koom-yai)

[Wilkinson Land Acknowledgment](#)





“land acknowledgments are just a first step in meaningful and lasting allyship with our local Native communities, and remain hollow without concrete actions to back them up.”

Solidarity and support of Native American Students moves beyond acknowledgment.

California Indian Pre-Contact Tribal Territories



In 2019, Indigenous Peoples' population was **6.9 million** in the United States.

That's around **2.09%** of the total population.

78%

of Native Americans live outside of tribal areas.

There were once more than **300** indigenous languages spoken in the U.S.

with only **175** remaining

Alaska
20.4%

States with the highest percentage of American Indian and Alaska Native residents

Oklahoma
14.3%

California
Oklahoma
Arizona

Home to the largest number of Native Americans, according to the 2010 Census.



02

HISTORICAL CONTEXT

historical roots and legislation

UNDERSTANDING TERMS

NATIVE AMERICAN STUDENTS

identified as American Indian or Alaskan Native by the California Department of Education

INDIGENOUS

The people who lived in a place prior to colonial contact are indigenous. American Indians who live in the territories of other Native people are there because of the violent disruptions to their own communities; they are still indigenous but are also accountable to the peoples of the homelands they reside in.

CALIFORNIA INDIANS

California tribal nations are the original nations of California. This includes both federally and state recognized tribes. Please see information about tribal definitions

HISTORICAL CONTEXT

- **The beginning of systemic suppression (1800s-1900s)**
 - One historical occurrence that has had a long-lasting and far-reaching impact on the education of American Indian people was the formation of the American Indian boarding school.
- **The impact on generational wealth**
 - the level of education and training afforded American Indian students prepared them for menial vocations. As a result, most American Indian students today do not have several generations of professionals, such as doctors, lawyers, or bankers to emulate.
- **Lack of a dignified, humane system of education.**
 - many of the psycho-social ills that persist in American Indian communities today can be traced to the boarding school era and the systematic enforcement of child maltreatment

ANCESTRAL TRAUMA

Understanding historical trauma helps explain the current problems facing many California Indians today. American Indians are experiencing historical loss symptoms (e.g., depression, substance dependence, diabetes, dysfunctional parenting, and unemployment) as a result of the **cross-generational transmission of trauma from historical losses.**

(California Indian culture and Sovereignty Center (CICSC) 2017)

THE EDUCATIONAL TREND FOR NATIVE AMERICAN STUDENTS

“The state of education in our nation’s K-12 schools for Native students is distressing.”

2007 Education Committee of the National Caucus of Native American State Legislators (NCNASL)

- According to The Condition of Education 2020, not much has changed. Native American students tend to perform two to three grade levels below their White counterparts in reading and math. They are also two times more likely to drop out of school than their White peers.
- Between 2010 and 2018, the college enrollment rate for AI/AN students decreased by 33 percent (**from 179,000 to 120,000 students**)
- One-tenth of AI/AN students could not complete K-12 education

LEGISLATION

Individuals with Disabilities Education Act (IDEA) [20 U.S.C. 1400] - federal protections for students with disabilities from early childhood through post-secondary education. *Students with disabilities and their parents have a right to “a free and appropriate public education.”*

Every Student Succeeds Act (ESSA), Title VII Funding— Indian, Native Hawaiian, and Alaska Native Education

- Identify American Indian students most at-risk in meeting state standards.
- Assess the needs of students and their families.
- Support research-based, comprehensive educational programs to help reduce the educational barriers that result from cultural and linguistic needs.
- Ensure that students receive appropriate coordinated educational services, including support services, that address their special needs.
- Help American Indian students achieve the same standards as developed for other students.
- Design programs to facilitate students' successful transitions to post secondary education and employment.

Additional federal and state funded programs include: Title I, migrant education, neglected and delinquent, programs for English learners, and gifted and talented education.



03

STATISTICS

How the state of education
translates into data

NATIVE AMERICAN POPULATION *CONSIDERATIONS*

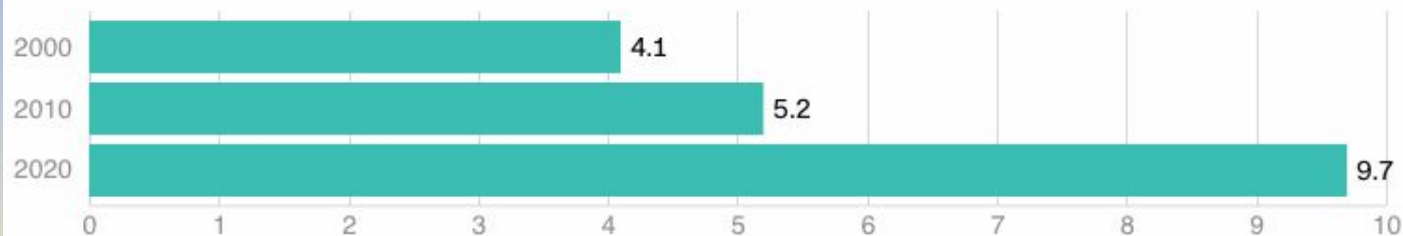
- American Indian or Alaska Native: “A person having origins in any of the original peoples of North and South America (including Central America) and **maintaining tribal affiliation or community attachment.**”
 - “Identifying as Native American is a complicated issue because for many tribal communities, the right to identify as a part of the community is something that is earned through participation and engagement -- DNA/ancestry tests alone aren't enough”

NATIVE AMERICAN AND ALASKA NATIVE POPULATION

Native American population grew to highest level in decades

Data released by the US Census Bureau last week showed that the number of people who identify as Native American -- alone or in combination with another race -- almost doubled from the previous census release in 2010.

Native American population (in millions)

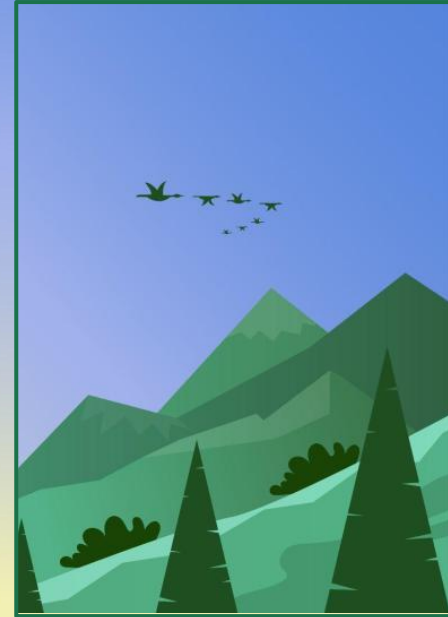


Source: US Census Bureau

Graphic: Priya Krishnakumar, CNN

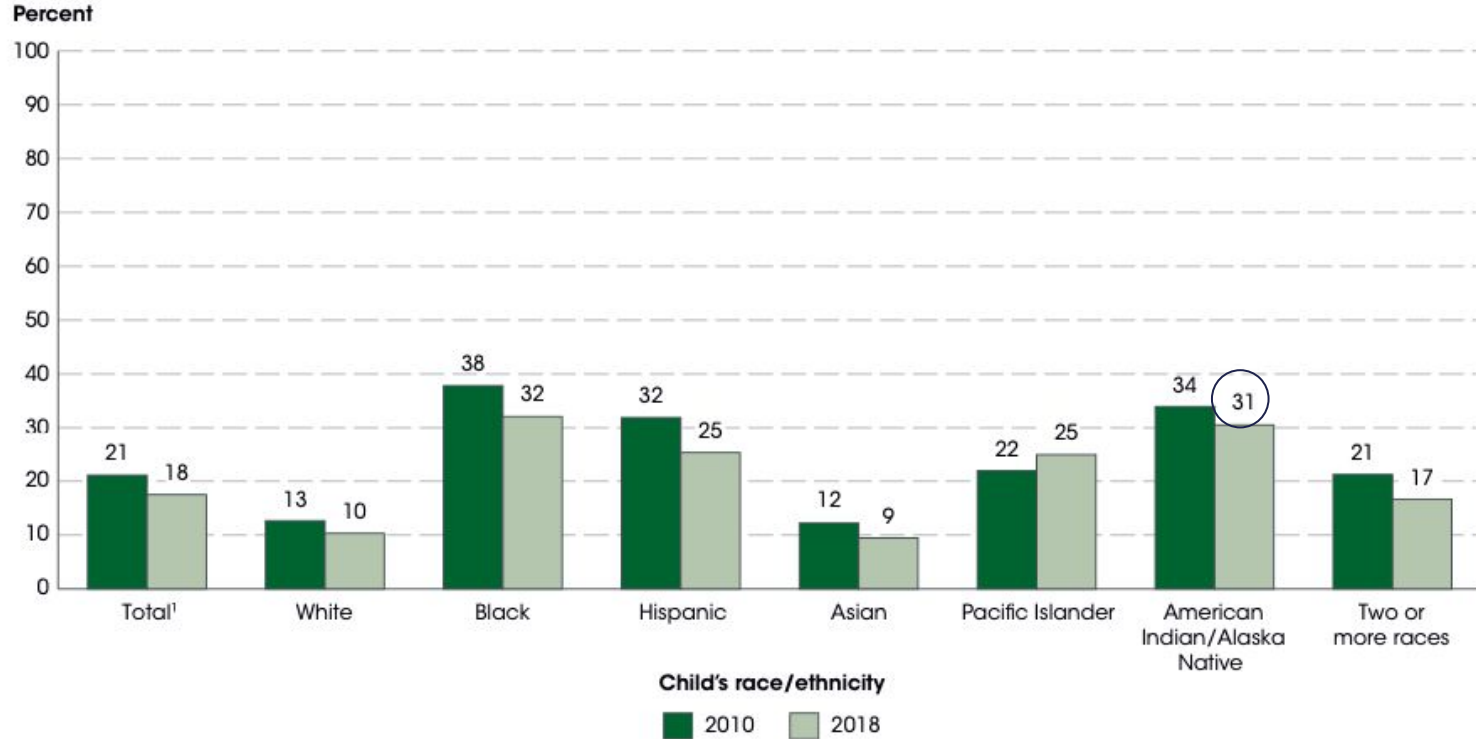
NATIVE AMERICAN STUDENTS *STATISTICS*

- According to the Condition of Education Report (2020), Native American and Alaska Native students (AI/AN) **represent about 1%** of US public school students
 - 1% = Approximately **half a million students!**



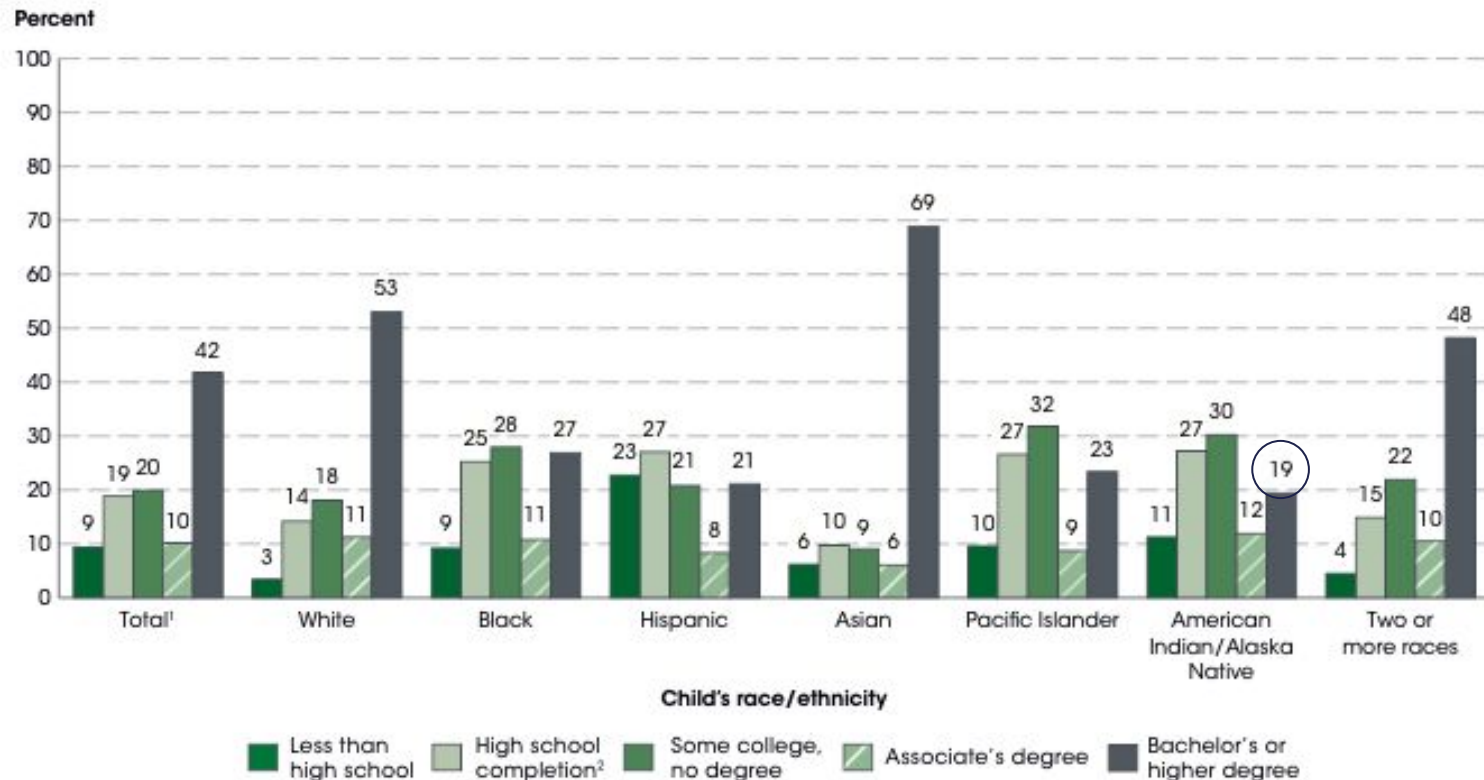
POVERTY RATES

Figure 3. Percentage of children under age 18 in families living in poverty, by child's race/ethnicity: 2010 and 2018



PARENTS' EDUCATIONAL ATTAINMENT

Figure 1. Percentage distribution of children under age 18, by child's race/ethnicity and parents' highest level of educational attainment: 2018



THE UGLY TRUTH

These statistics reveal **we need to do more** to support Native American students

74%

LOWEST GRAD. RATE

As compared to all other racial/ethnic groups in 2018-2019

9.5%

HIGHEST DROPOUT RATE

As compared to all other racial/ethnic groups in 2018



LACK OF TECH. ACCESS

In 2018, lowest percentage of students with home internet access (80%)*

COLLEGE & CAREER ATTAINMENT

- **Only 19% of Native Americans** ages 18 to 24 are enrolled in college **compared with 41% of the overall U.S. population**, according to the Postsecondary National Policy Institute (PNPI, 2019)
- **41%** of first-time Native American college students graduate within six years **compared with 62%** for all students (PNPI, 2019)
- **14.5%** of the American Indian and Alaska Native population earned a bachelor's degree or higher **compared with 31.3%** of the overall population (US Census, 2020)

04

IMPLICATIONS AND SUPPORT PROGRAMS

Best practices and
College/Career Support
Programs



**“Whoever controls the
education of our children
controls our future”**

Wilma Mankiller, Chief of the
Cherokee Nation (1985-1995)

BEST PRACTICES

SCHOOL CLIMATE

Safe and healthy classrooms and campuses are critical for students to achieve equity in opportunity

TRAUMA INFORMED COUNSELING

Address historical trauma and trauma due to the current pandemic, in schools to promote healing and create safe environments where students can thrive

TEACHER PREPARATION

Counseling curricula that promotes and educates teachers so they can implement culturally responsive strategies

WRAP AROUND SERVICES

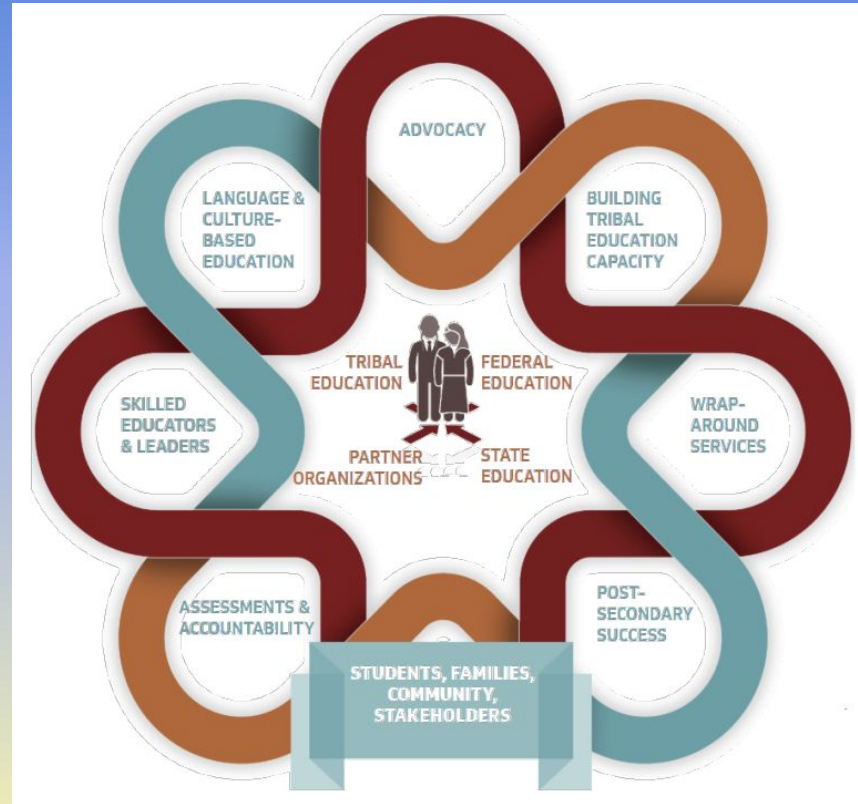
Native students learn best in healthy learning environments that provide resources to support the holistic needs of each child.

POSTSECONDARY EDUCATION

Increase access to a high quality academic and cultural education that prepares students to succeed in life

ENGAGE & ADVOCATE

Engage with stakeholders, admin, and Native American community members to advocate for students collaboratively



The National Indian Education Association

COLLEGE SUPPORT PROGRAMS FOR NATIVE STUDENTS

FINANCIAL AID

FAFSA, Government Scholarships, and school specific funding.

AMERICAN INDIAN COLLEGE FUND

Native Pathways Program

UC RESOURCES

Each campus has a unique portfolio of programs, resources and academic offerings that engage the full participation of American Indians throughout the course of their undergraduate and graduate education.

TRIBAL COLLEGES AND UNIVERSITIES

Guided by our Tribal Nations' ancestral knowledge, California Tribal College creates educational, research, and economic opportunities while honoring Native ways.

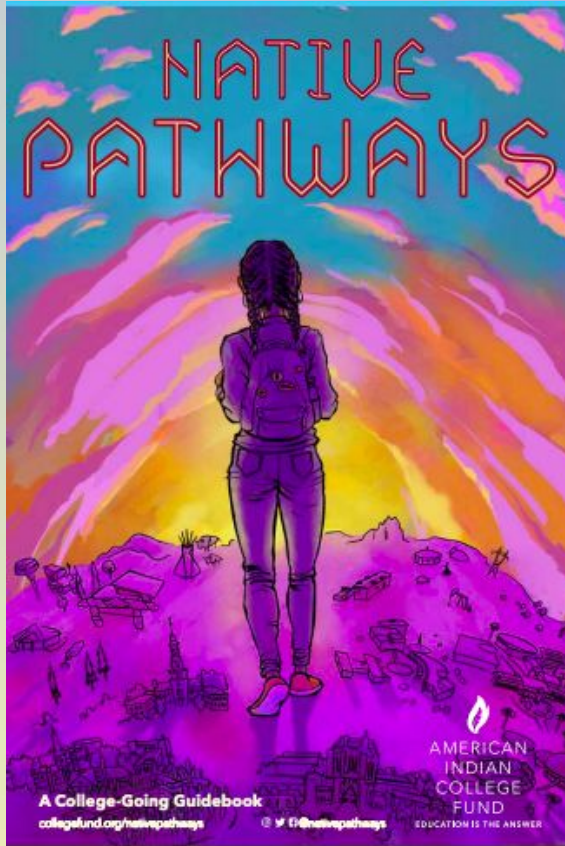


The background features a stylized landscape with green mountains and dark green trees under a blue sky with white stars. The scene is rendered in a low-poly, geometric style.

05

RESOURCES

RESOURCES HIGHLIGHT: “NATIVE PATHWAYS” GUIDEBOOK



- A free resource created by Indigenous people for Indigenous youth
- “developed to empower Native students to prepare, plan and successfully take the first steps of their higher education journey – with their identity firmly in hand“
- Created by the American Indian College fund - lots of great resources on their website!

RESOURCES HIGHLIGHT: “NATIVE PATHWAYS” GUIDEBOOK

Student #4

FAMILY I love my family, but I would love to explore beyond my hometown. I want to test my independence and I am okay with only coming home on holidays.



Photo by Amanda Cheamish

AFFORDABILITY This school is very expensive. I will have to create my scholarship plan early to understand my options.

BELONGING The Native people I have met thus far have been great, so welcoming, and I clicked with them right away. They have Native faculty and a center for all students of color.

PERSONAL I want to major in law, but am willing to explore what other concentrations are out there, like film, literature, and science. This college offers the opportunity to study what I want right away, instead of having to take general requirements.

COLLEGE CHOICE Brown University

Student #2

FAMILY My family has sweat lodge every Sunday. I need a college close to home so I can attend.



AFFORDABILITY This school offers general education requirements for half the cost I would pay elsewhere.

BELONGING Almost 100% of the students are Native and we get to learn about our history and language.

PERSONAL I can earn my general education requirements and they will transfer into my major.

COLLEGE CHOICE Fort Peck Community College



LAND ACKNOWLEDGEMENT: YOU'RE ON CALIFORNIA INDIAN LAND, NOW WHAT?

ACKNOWLEDGING RELATIONSHIPS TO SPACE & PLACE

TOOLKIT



THANKS

Do you have any questions?

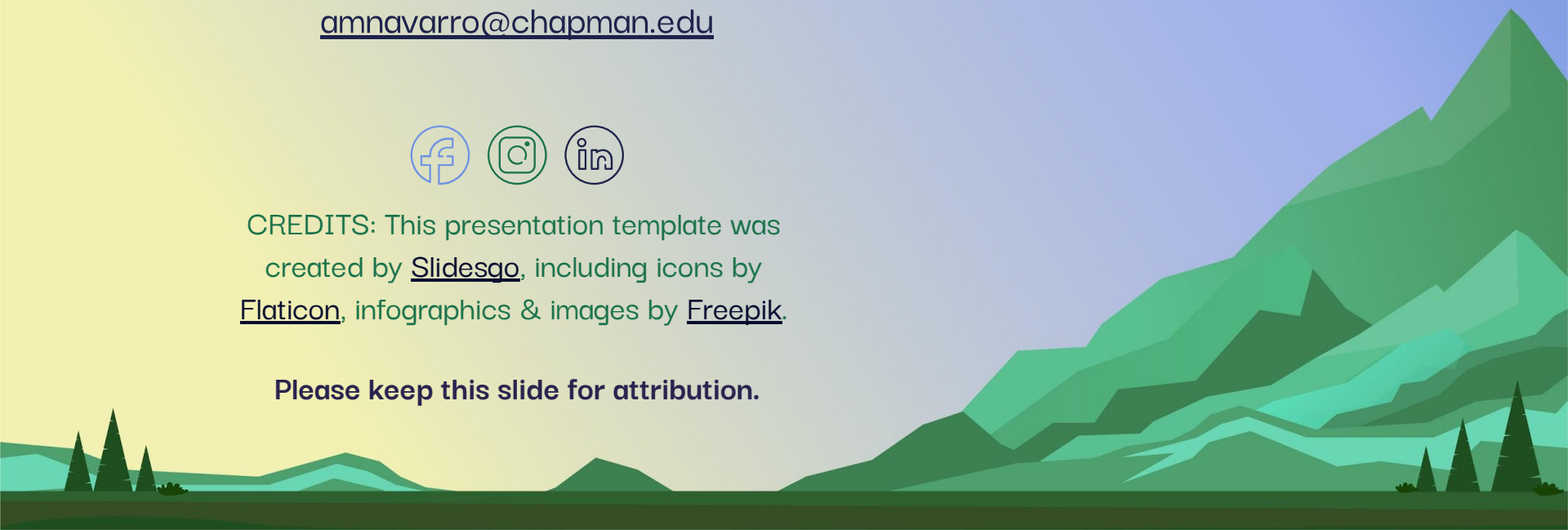
mimartinez@chapman.edu

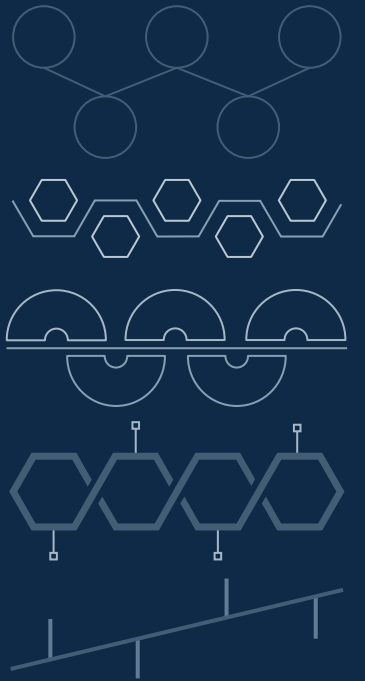
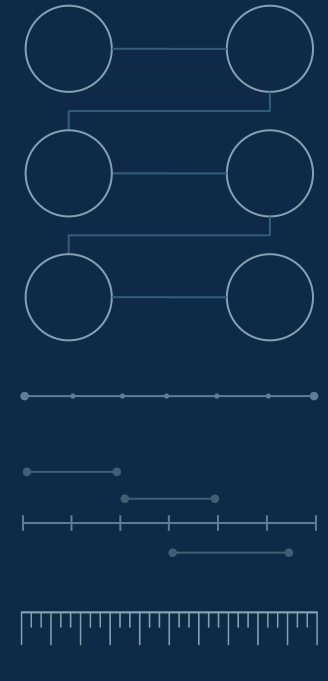
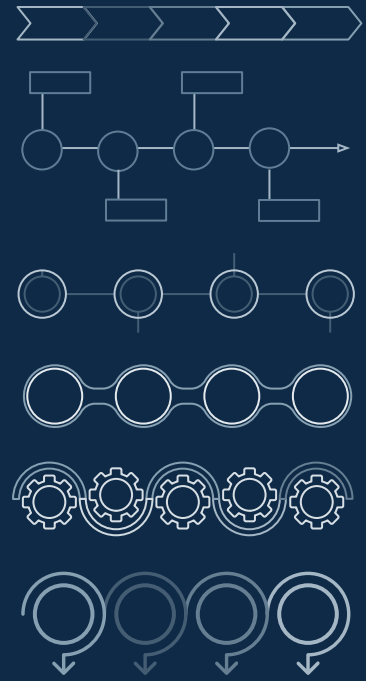
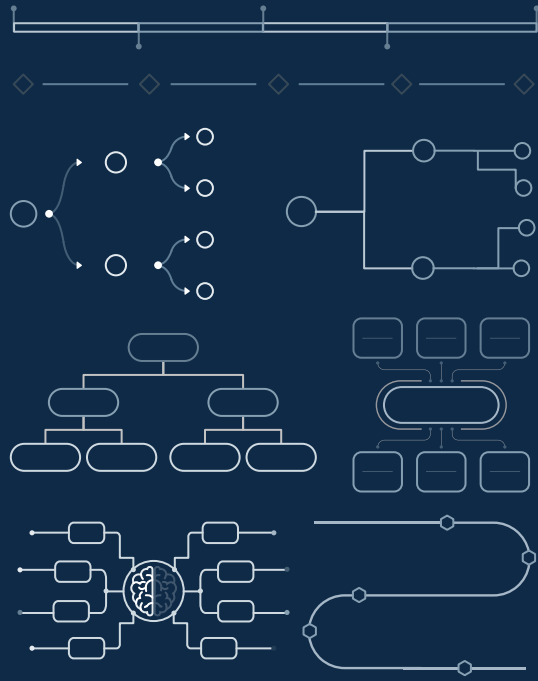
amnavarro@chapman.edu

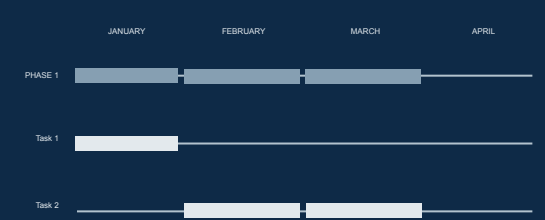
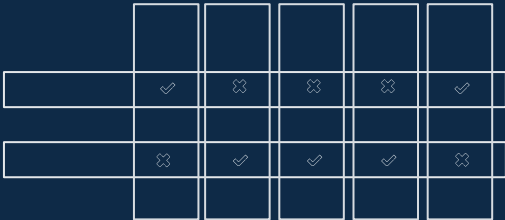
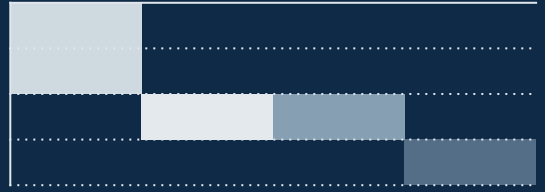
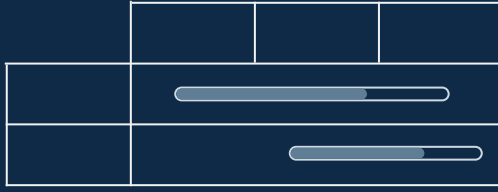
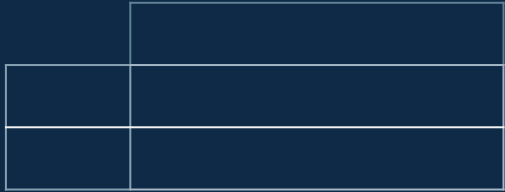
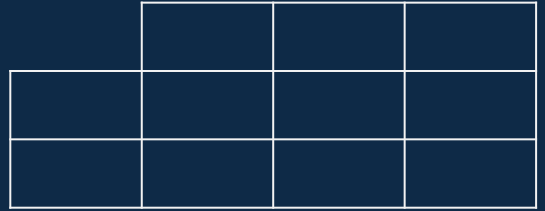
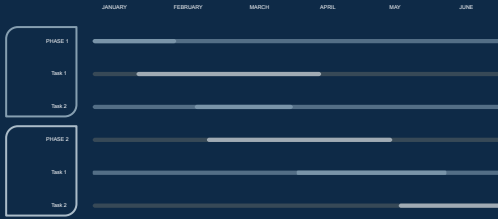


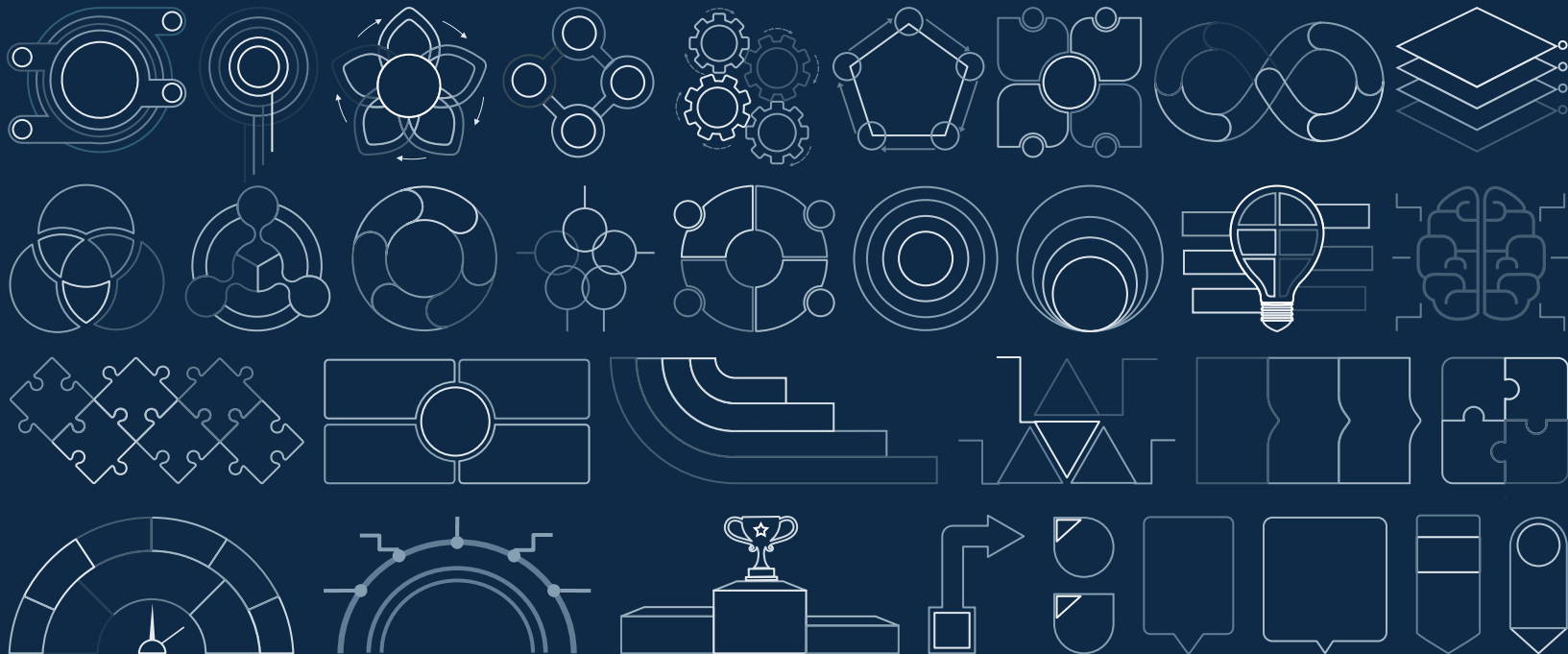
CREDITS: This presentation template was created by [Slidesgo](#), including icons by [Flaticon](#), infographics & images by [Freepik](#).

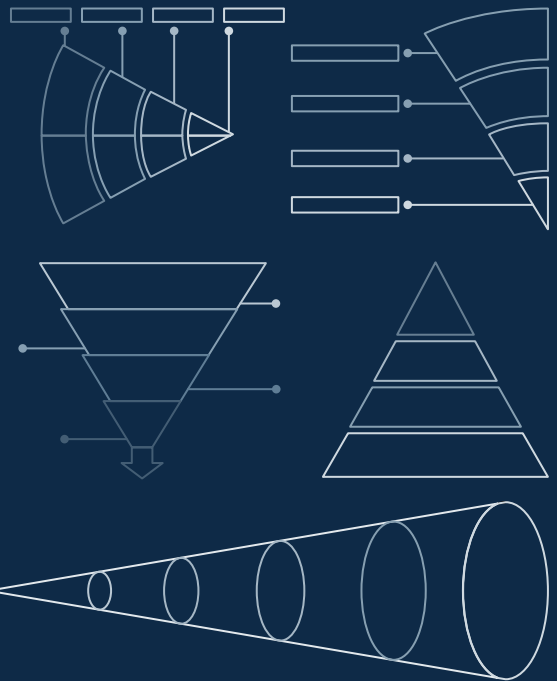
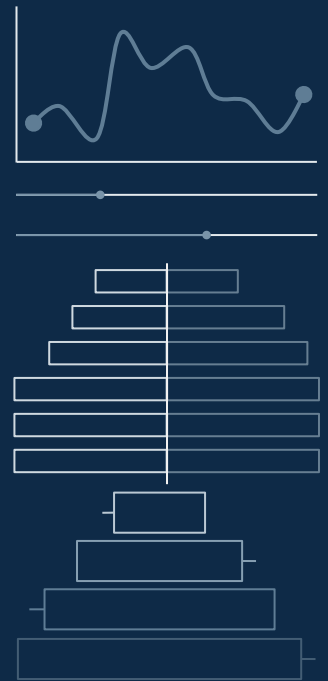
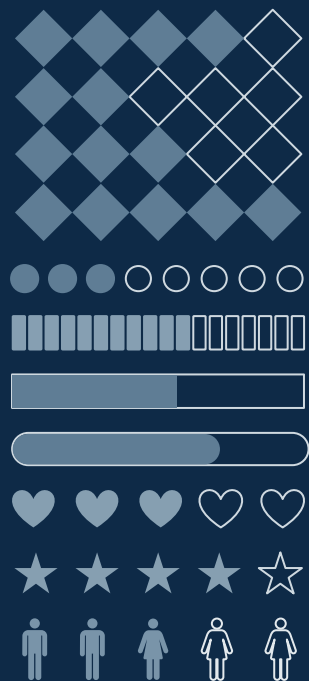
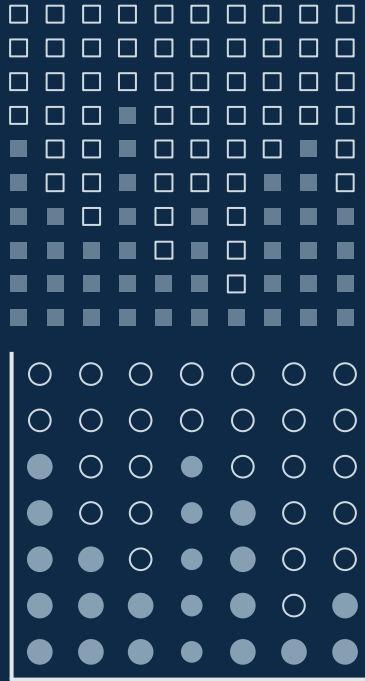
Please keep this slide for attribution.











...and our sets of editable icons

You can resize these icons without losing quality.

You can change the stroke and fill color; just select the icon and click on the paint bucket/pen.

In Google Slides, you can also use Flaticon's extension, allowing you to customize and add even more icons.



Business Icons



Teamwork Icons



Creative Process Icons



Performing Arts Icons



Nature Icons



SEO & Marketing Icons





CONTENTS OF THIS TEMPLATE

Here's what you'll find in this **Slidesgo** template:

- 1.** A slide structure based on a multi-purpose presentation, which you can easily adapt to your needs. For more info on how to edit the template, please visit **Slidesgo School** or read our **FAQs**.
- 2.** An assortment of icons that are suitable for use in the presentation can be found in the **alternative icons slide**.
- 3.** A **thanks slide**, which you must keep so that proper credits for our design are given.
- 4.** A **resources slide**, where you'll find links to all the elements used in the template.
- 5.** **Instructions for use**.
- 6.** Final slides with:
 - 1.** The **fonts and colors** used in the template.
 - 2.** A **selection of illustrations**. You can also customize and animate them as you wish with the online editor. Visit **Storyset by Freepik** to find more.
 - 3.** More **infographic resources**, whose size and color can be edited.
 - 4.** Sets of **customizable icons** of the following themes: general, business, avatar, creative process, education, help & support, medical, nature, performing arts, SEO & marketing, and teamwork.
You can delete this slide when you're done editing the presentation