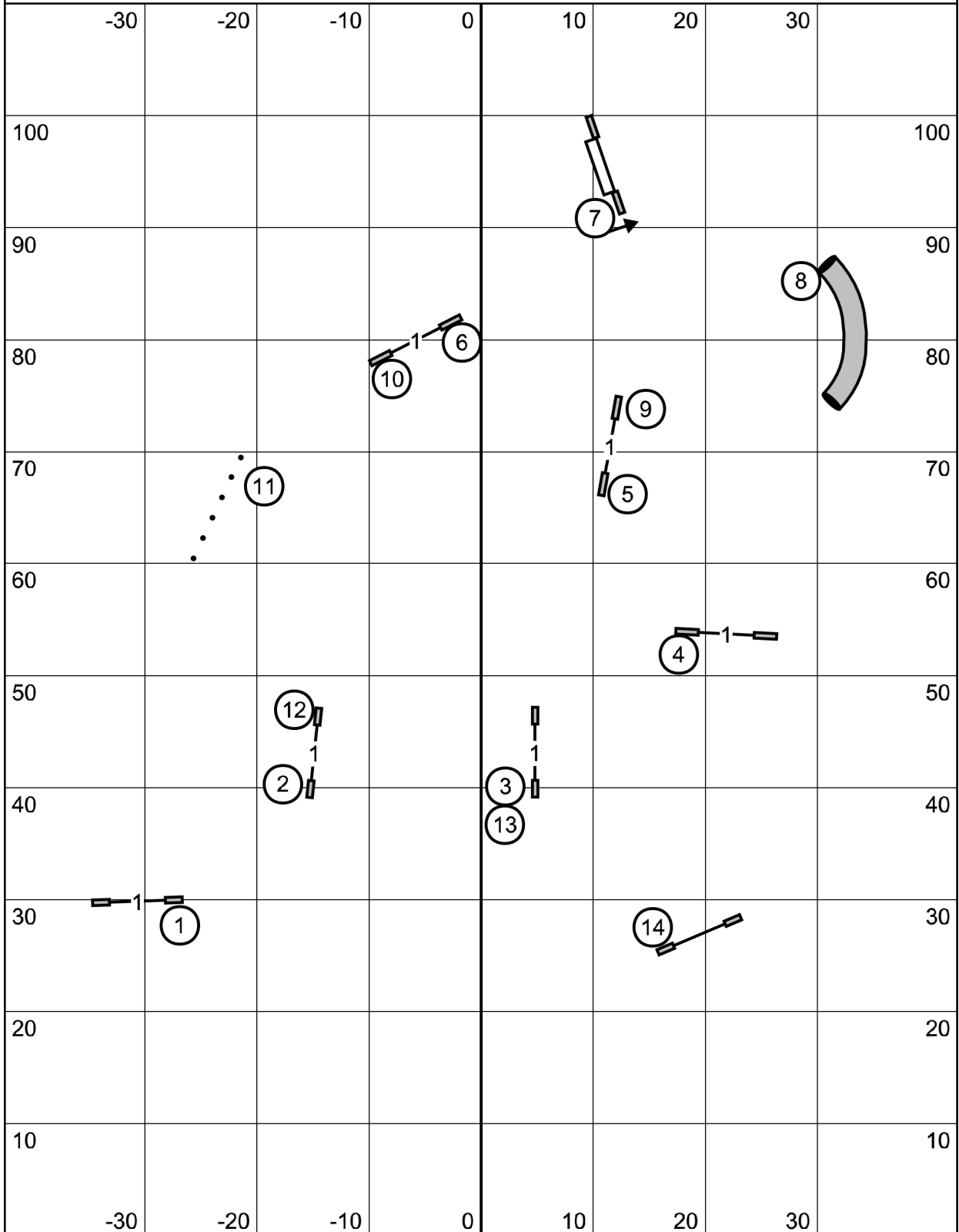


Novice JWW



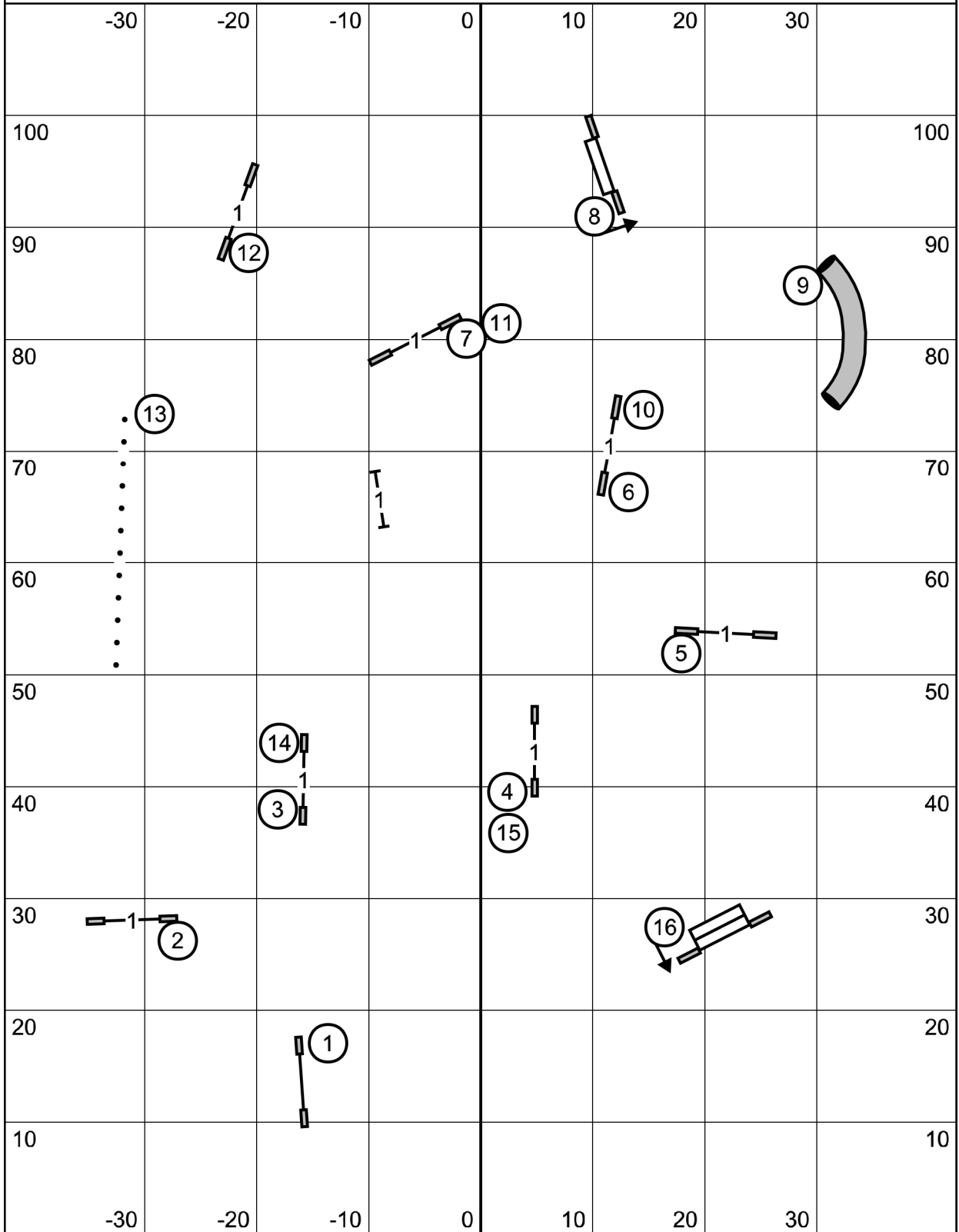
Enter

T/S

**Greater St. Louis Agility Club
8/19/22
Judge Cheri Tyre-Roberts**

Exit

Open JWW

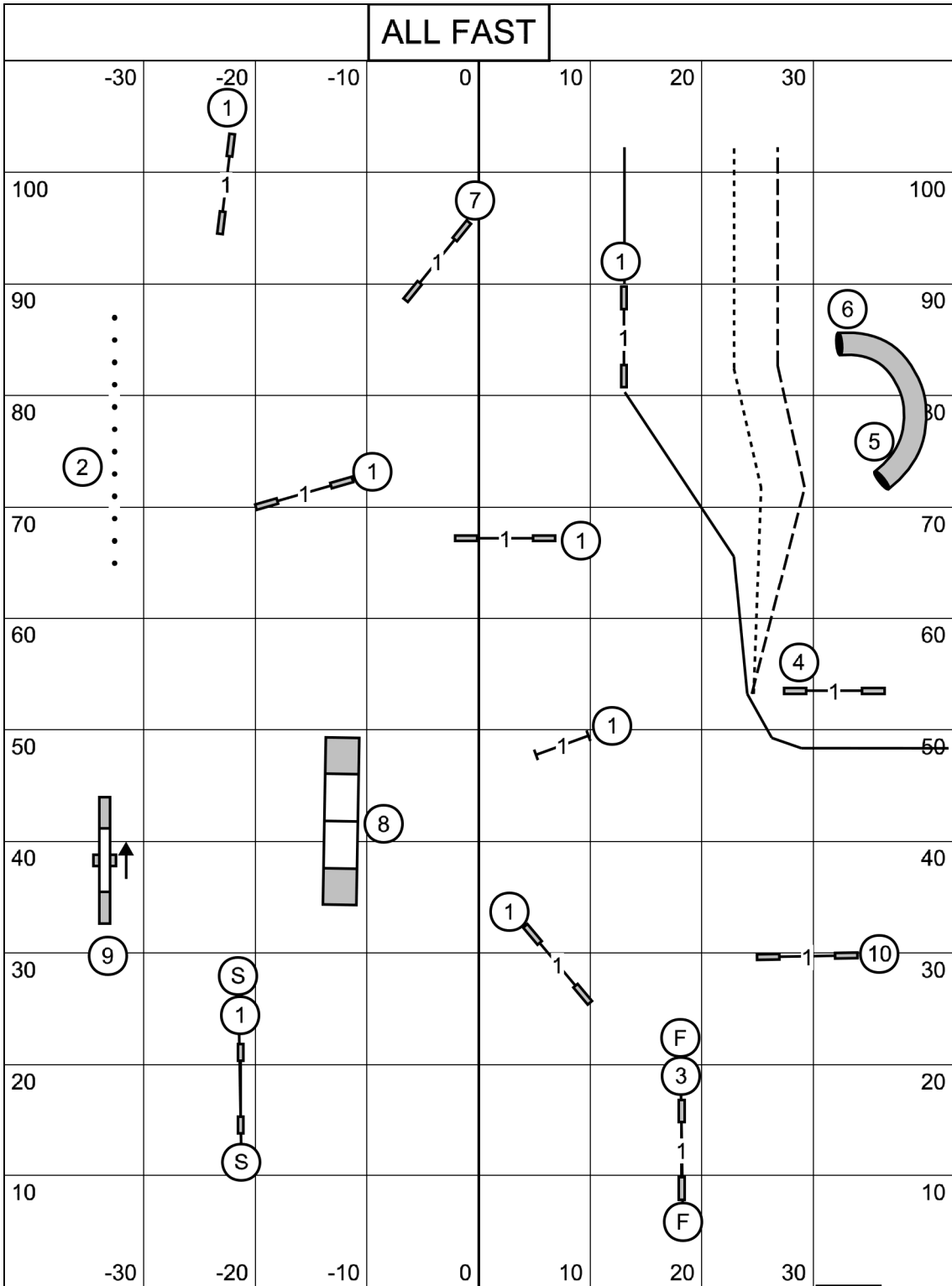


Enter

T/S

Exit

Greater St. Louis Agility Club
8/19/22
Judge Cheri Tyre-Roberts



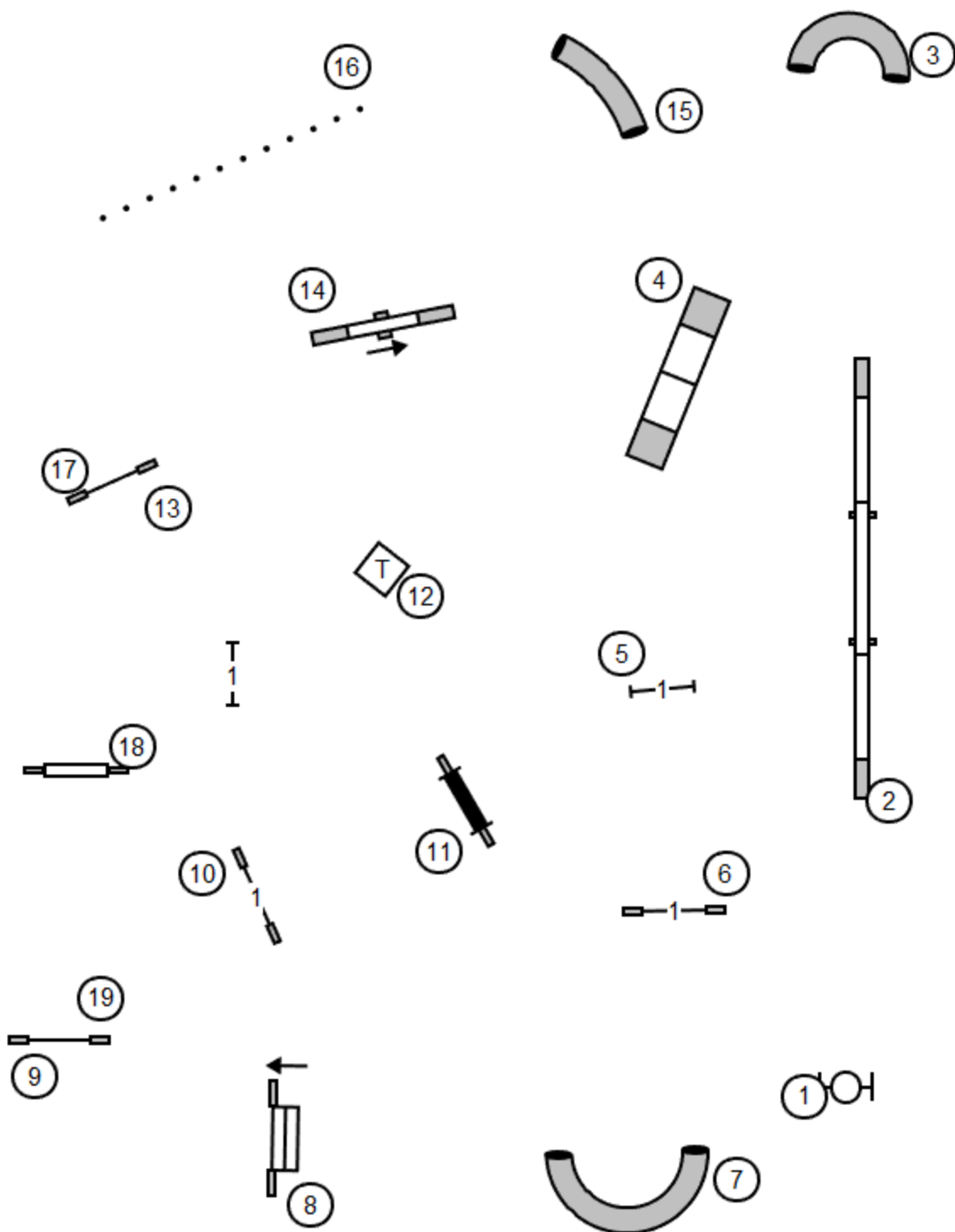
Enter T/S

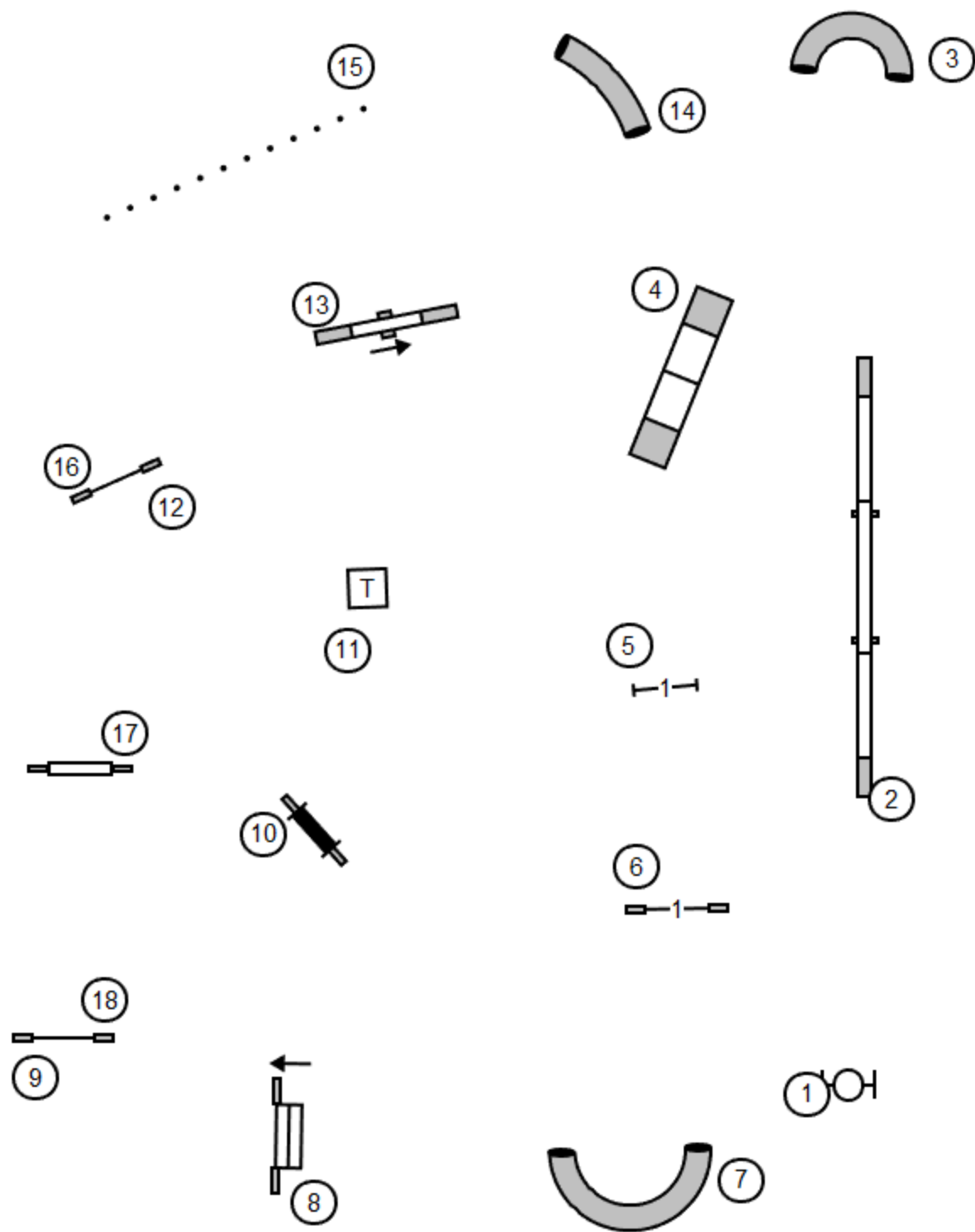
Exit

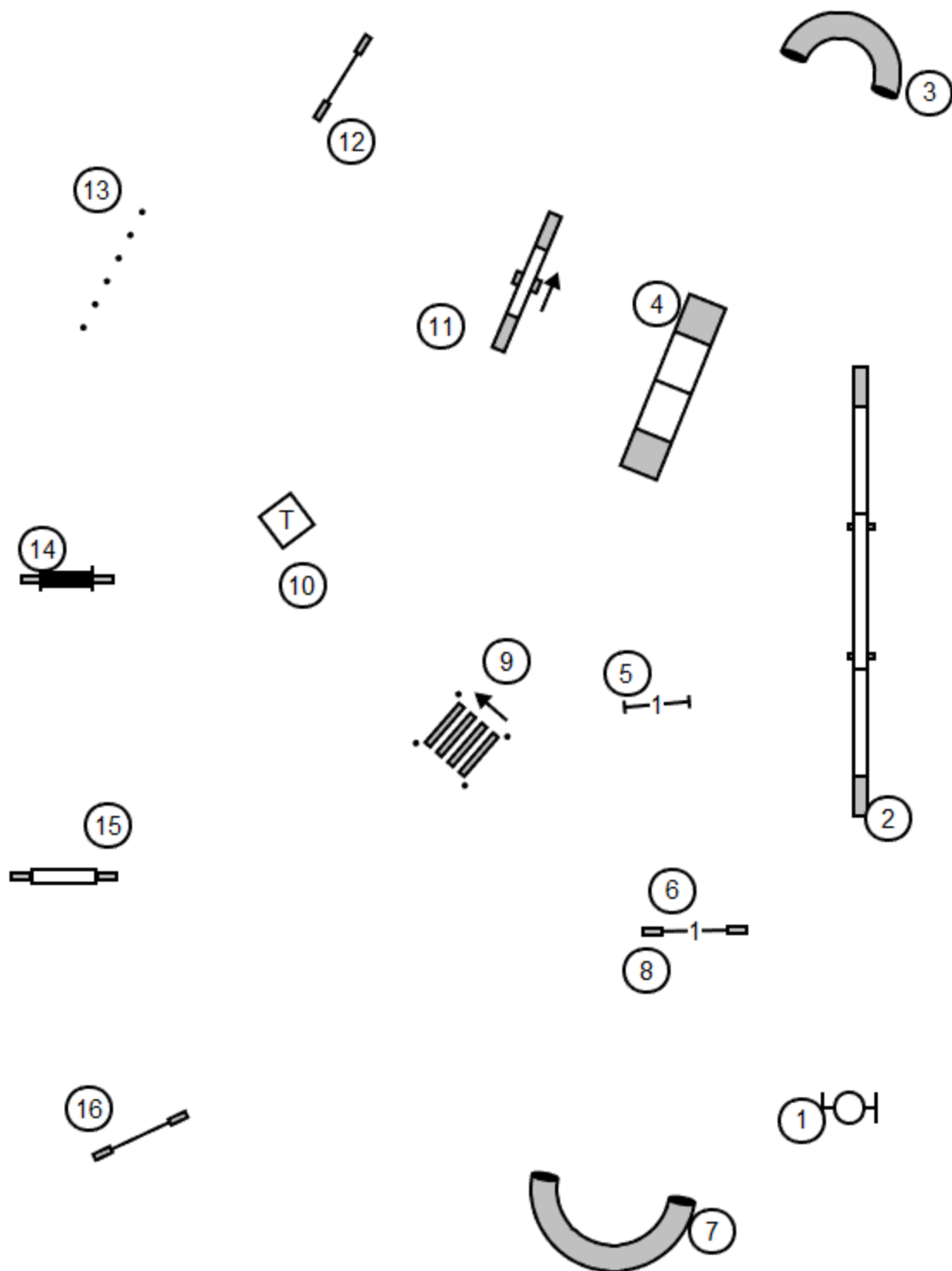
Greater St. Louis Agility Club
8/19/22
Judge Cheri Tyre-Roberts

FAST SCT-Buzzer @SCT
 41sec - 4"
 38sec - 8", 8P, 12P
 35sec - 12", 16", 16P, 20P
 32sec - 20", 24", 24"C

- > Nov. (6) (4) + 20 = 50 pts.
- > Open (6) (4) + 25 = 55 pts.
- > E/M (6) (4) (5) + 25 = 60 pts.



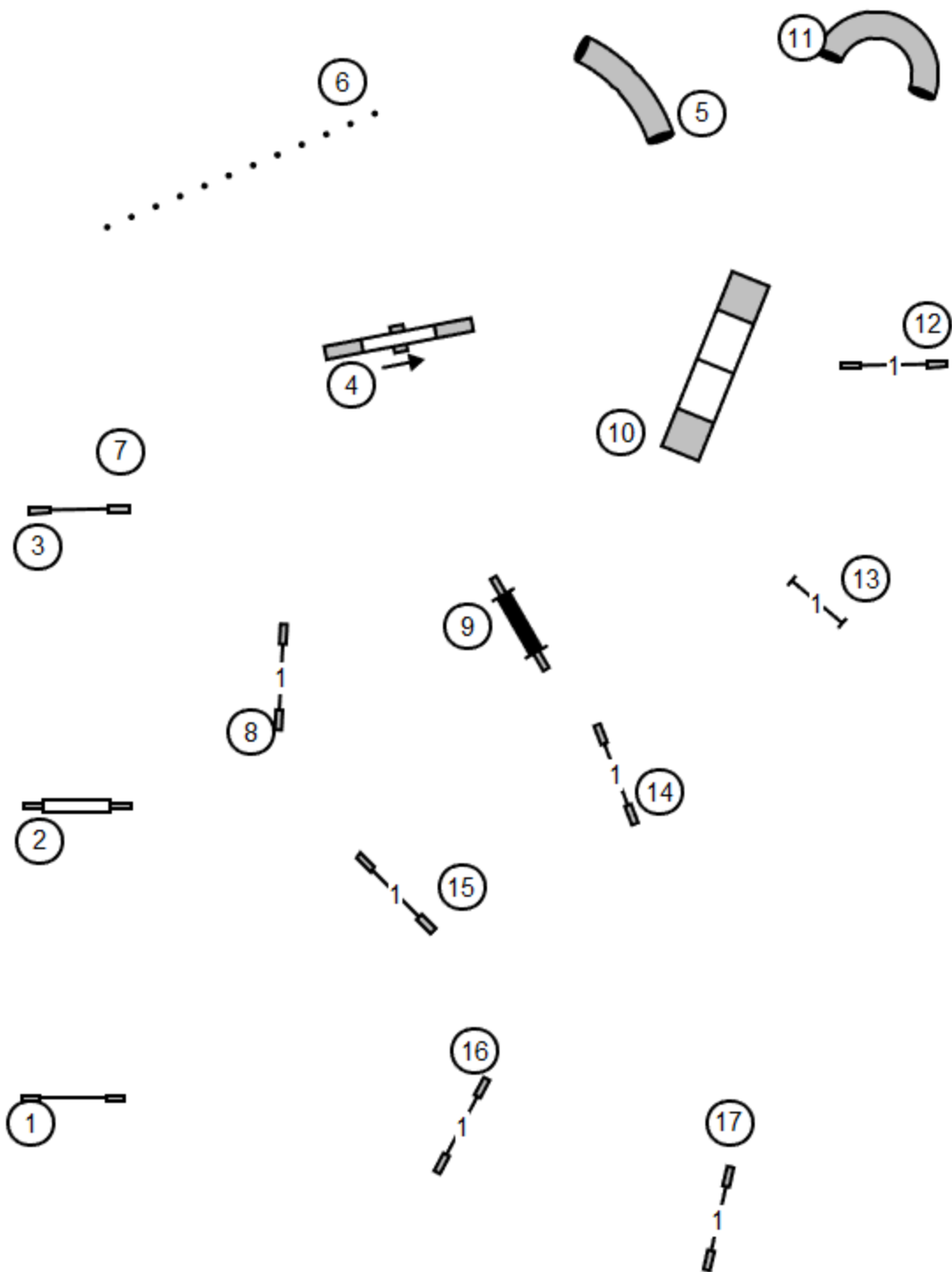




Exit

T/S

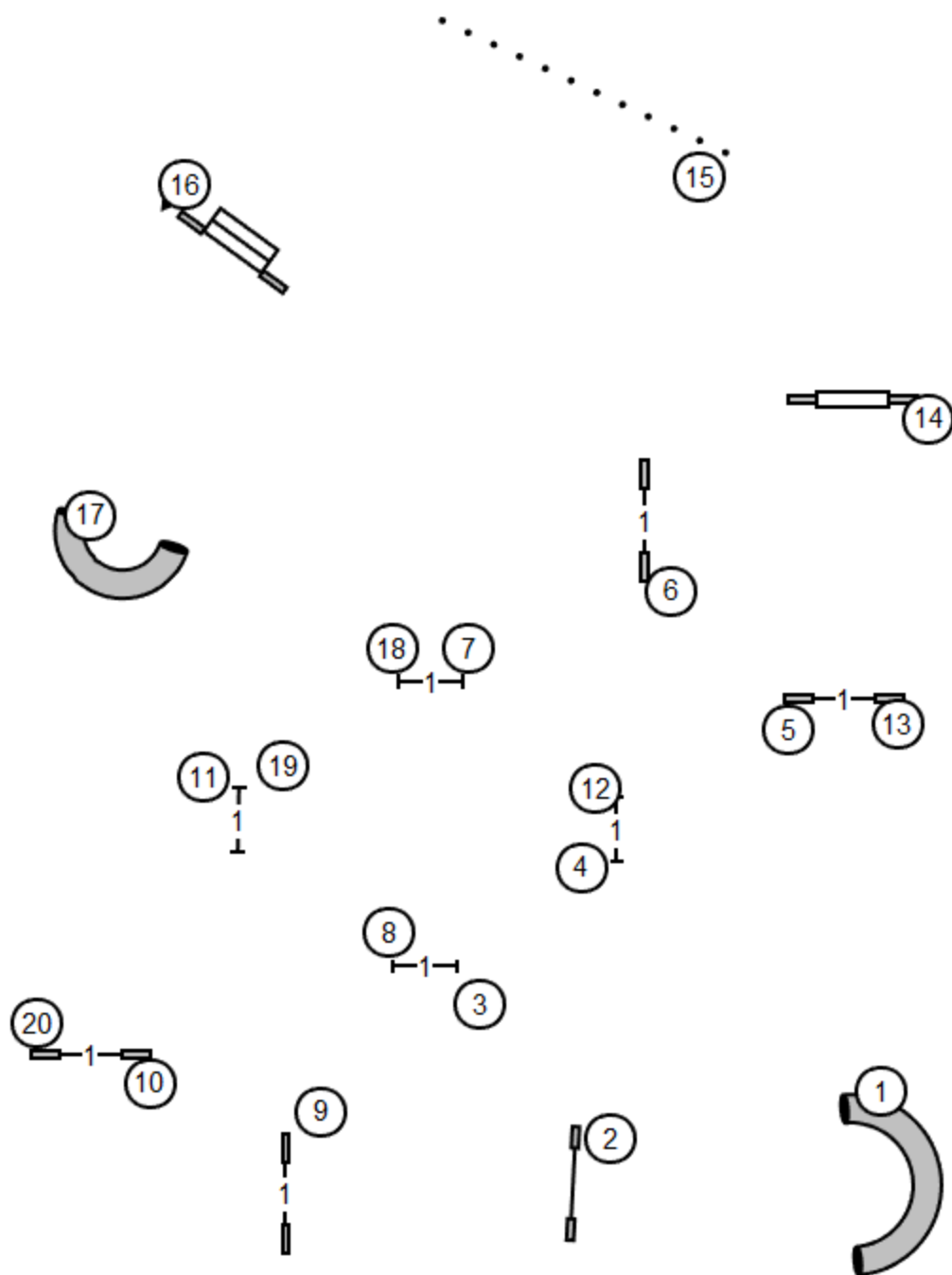
Enter

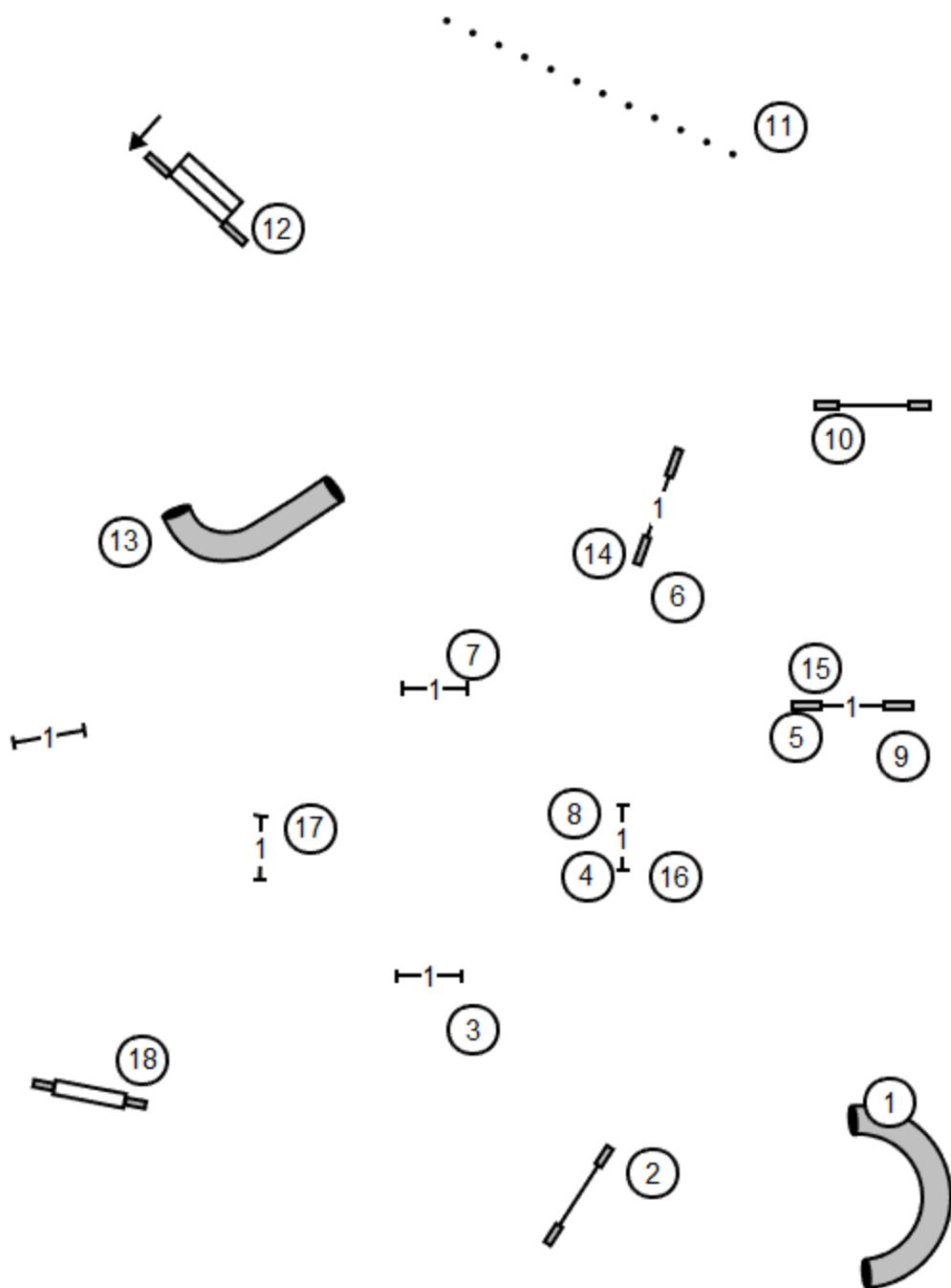


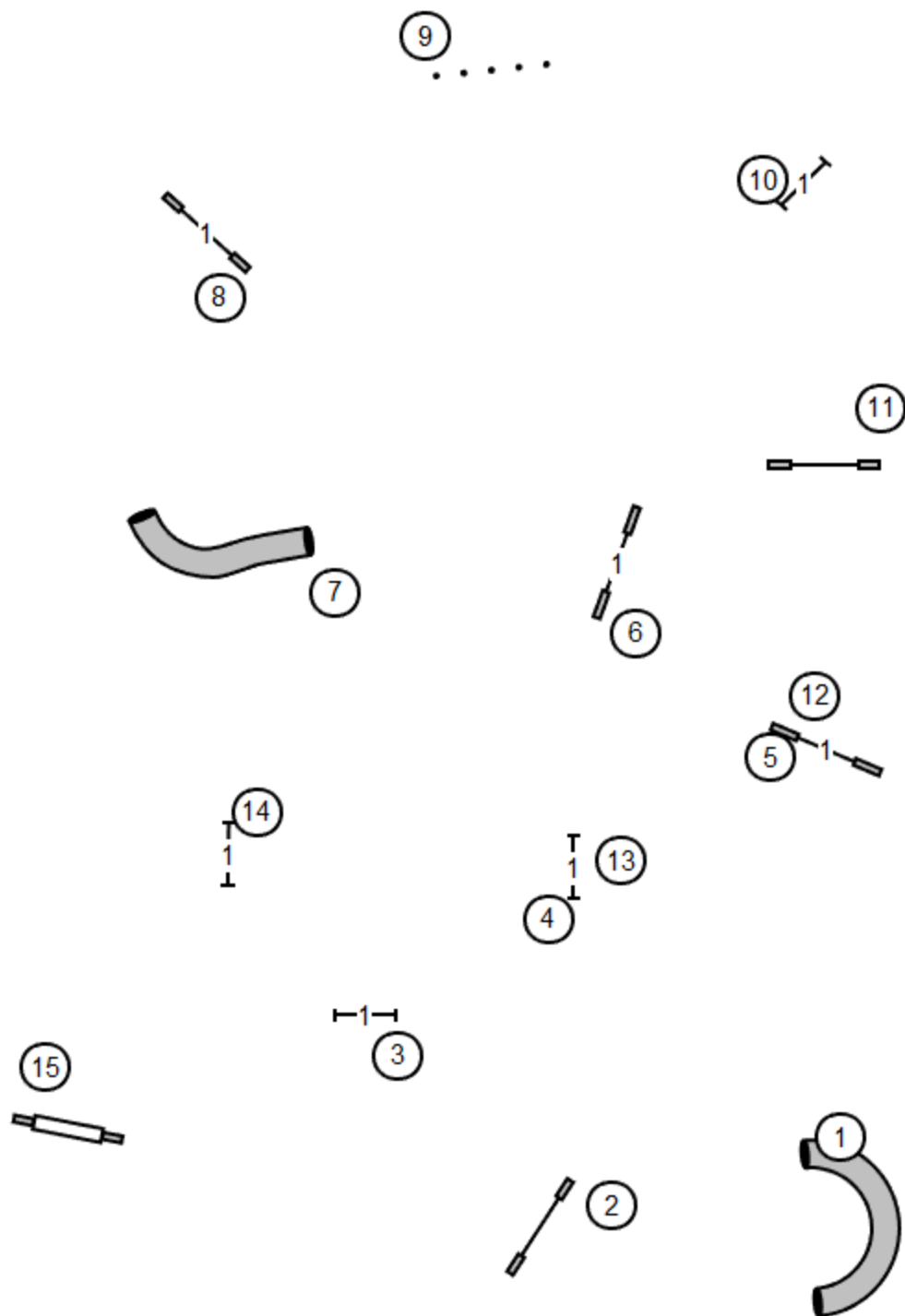
Enter

T/S

Exit



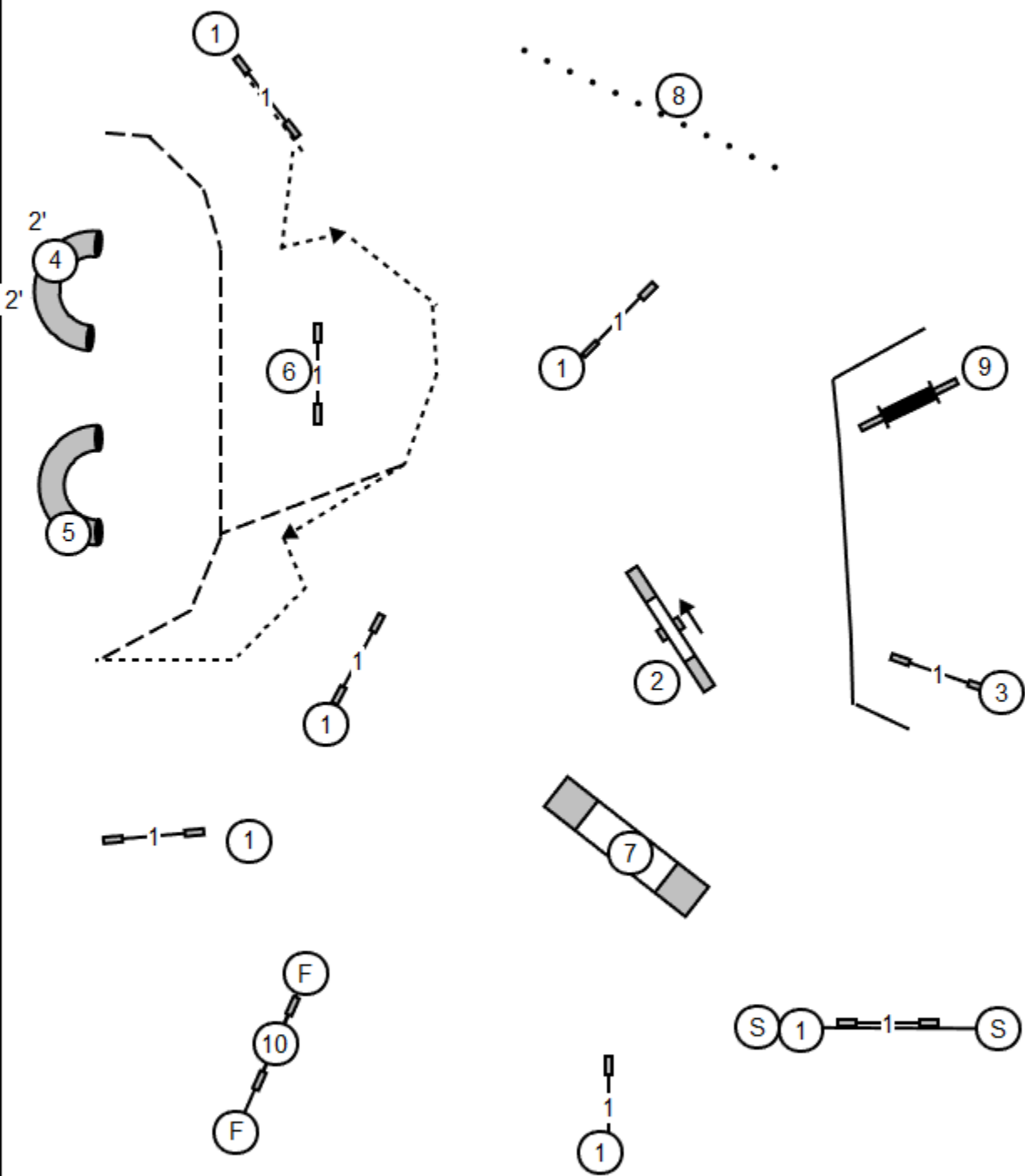




send
Mast/4-6-5
Open 4-6
Novice 9-3, 3-9

Greater St Louis Agility Club
JUDGE : TIM PINNERI

August 20, 2022(sat)
All Fast



Enter/Exit

T/S

Enter/Exit

Greater St. Louis Agility Club- Handlers Briefing

Welcome to this weekend's agility trial. My name is Cheri Tyre-Roberts and I'm from DeLand, FL. I would like to thank the club for giving me the opportunity to judge for you this weekend. I run German Shepherd Dogs and a Rat Terrier runs me :) . I am looking forward to a fun trial. Please be extra kind to each other and club members, putting on a safe, quality and fun trial is the result of hours of hard work by many, many individuals. Thank you to the Trial committee and members for all of your hard work to make this trial a possibility.

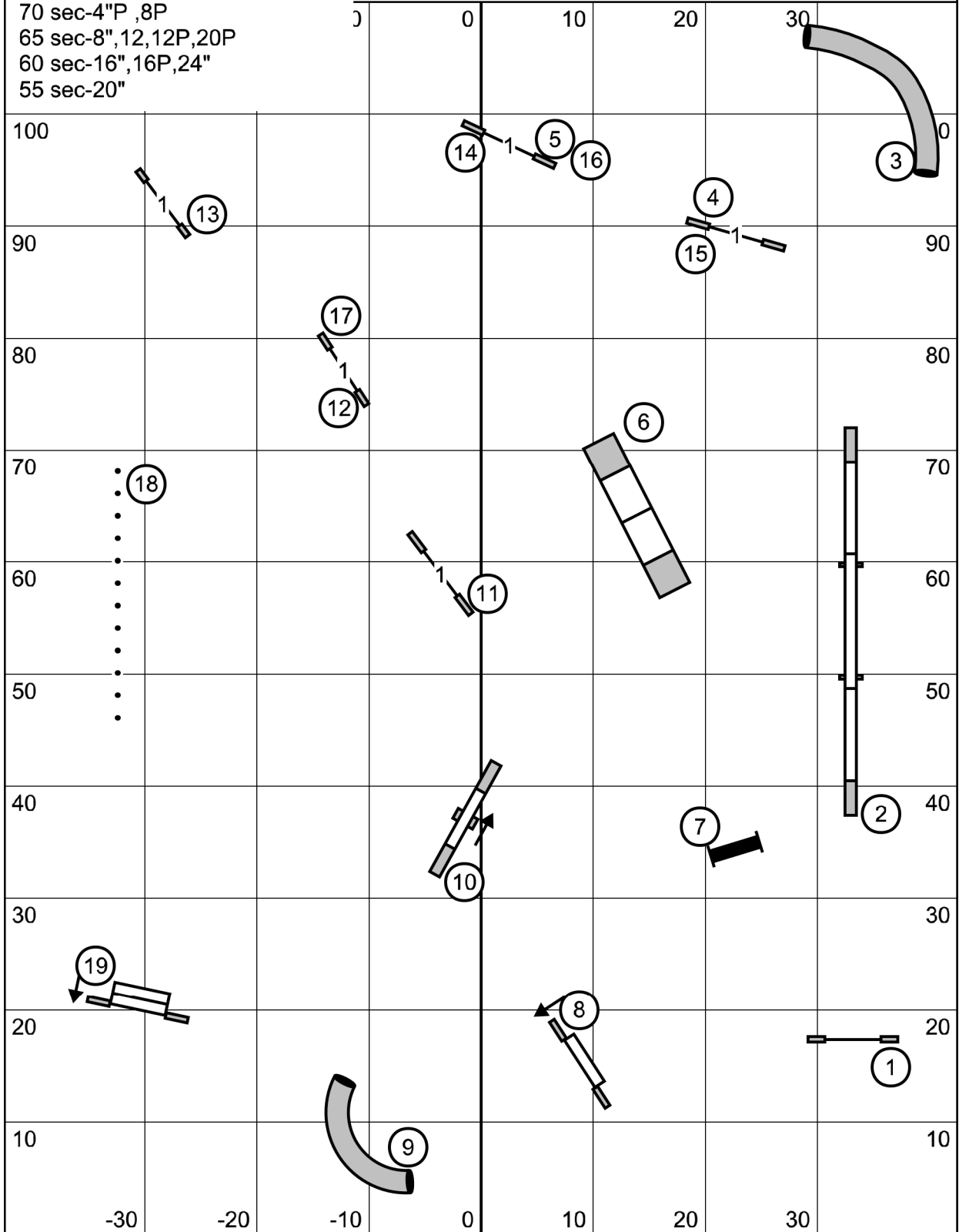
Everyone must comply with the trial and safety procedures outline in your confirmation letter.

Reminders

- Only flat or rolled collars are allowed. No items may be attached to the collar.
- If you have a conflict, please work it out with the gate steward.
- 3 attempts are allowed at the weaves. (unless using your FNG as explained later)
- In Standard – I will use the typical table count, please let me finish the “O” in “Go”
- You may run with your leash fully in your pocket or worn on your body.
 - If the dog touches the leash at any time during the run, you will be eliminated (“E”).
 - If you drop your leash, so long as the dog does not touch it, no call will be made.
- 4-paw safety rule – so long as your dog has NOT crossed the apex of the contact obstacle with 4 paws prior to exiting the contact, only a refusal will be incurred. You may reattempt the obstacle. If you continue at this point, you will incur a wrong course and fault for not completing the contact. Once the dog has crossed the apex with all 4 paws, you must continue (If you choose to re do the contact, your run will at that time be judged as a FNG with FNG course time in effect. Std=60 sec & JWW=45 sec)
- FNG (Fix N Go On) is allowed in any run
 - Exhibitor may immediately reattempt an obstacle or short sequence one time on the course.
 - Reset and repeat an obstacle
 - 2nd lead-out
 - 4th try at the weaves
 - NOTE - if the handler reattempts the weave approach from the obstacle prior to the weaves, after a miss on the 1st or 2nd attempt at the weaves, this counts as a FNG and the team MUST continue on with their run if the dog misses the entry. You DO NOT get any further attempts, even if you do this after the first one.
 - Handler may touch equipment, touch/pet their dogs, and reset any ONE jump.
 - Allowed once in a run
 - Results in a non-qualifying score
 - Teams should expeditiously exit the ring if/when the horn blows
 - 60 seconds for STD
 - 45 seconds for JWW
 - T2B MCT
 - If the horn sounds while a FNG is being done, the exhibitor may complete the FNG before proceeding to the finish.
 - Teams do not indicate a FNG is taking place, this is a judges call.
 - Be aware that any activity that would normally be considered training in the ring will be considered your FNG for that run.
- Be safe and have fun with your dogs!

Premier Standard Course Times
 MCT-70
 70 sec-4"P ,8P
 65 sec-8",12,12P,20P
 60 sec-16",16P,24"
 55 sec-20"

Premier Standard



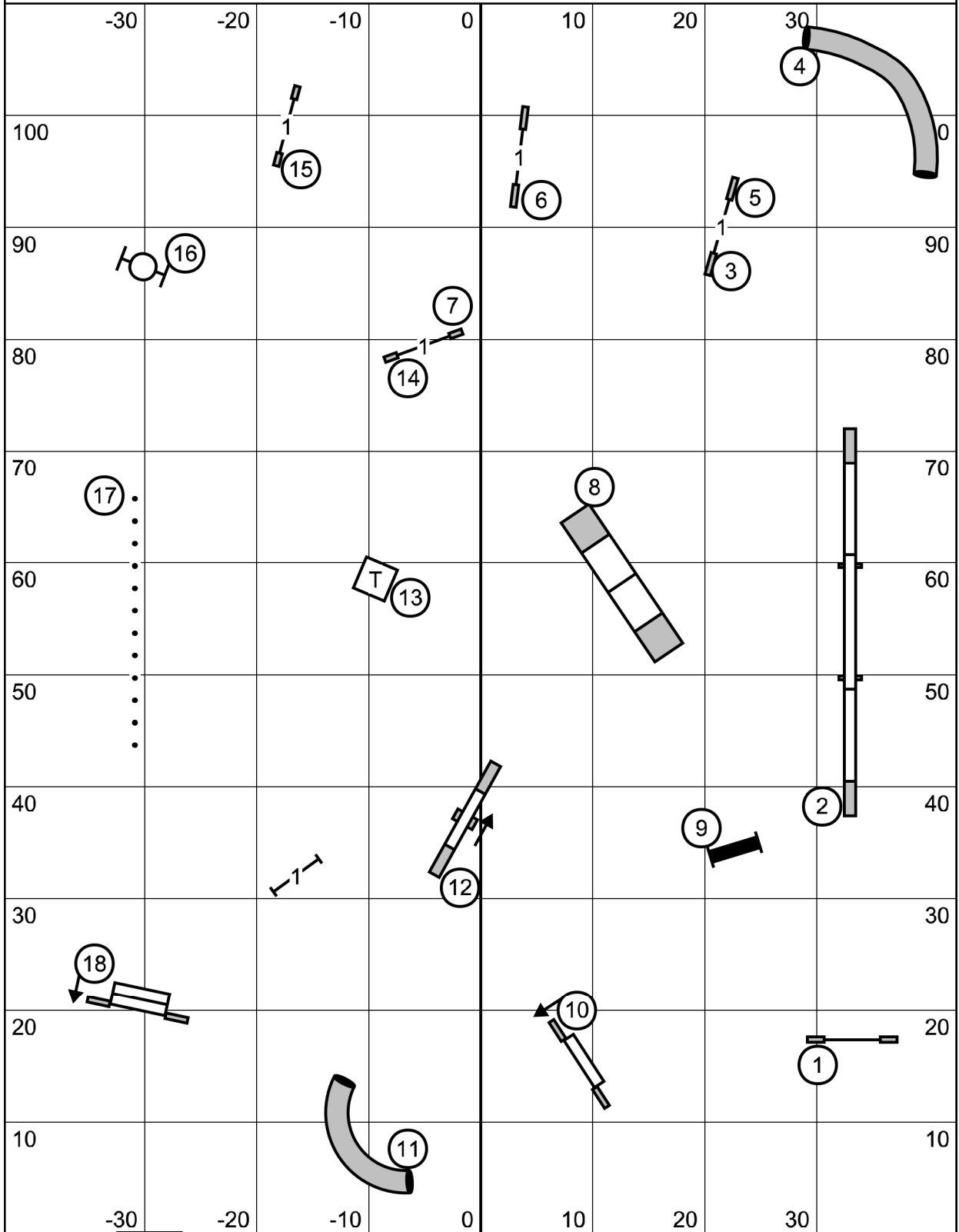
Exit

Greater St. Louis Agility Club
8/20/22
Judge Cheri Tyre-Roberts

T/S

Enter

Excellent/ Master Standard



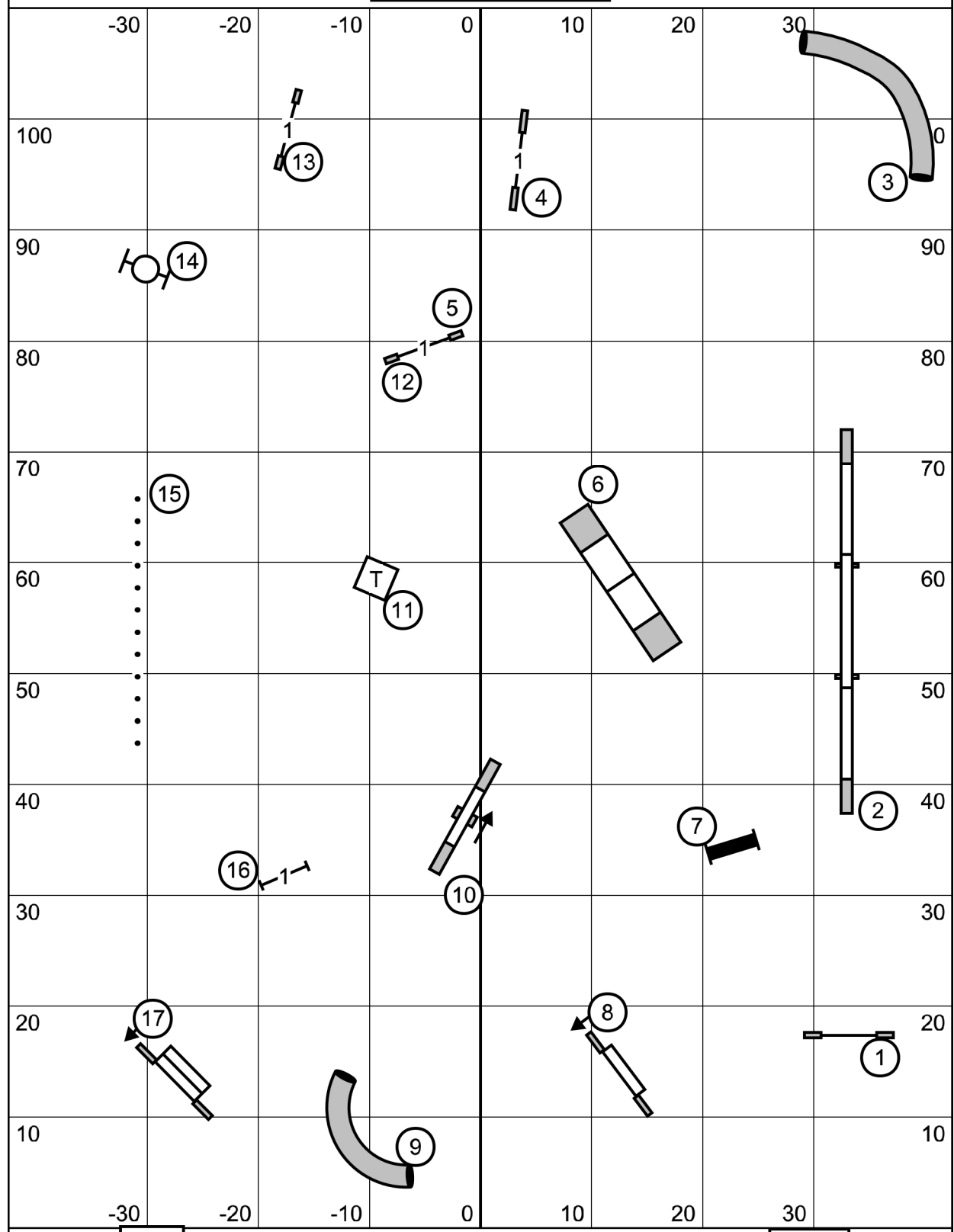
Exit

Greater St. Louis Agility Club
8/20/22
Judge Cheri Tyre-Roberts

T/S

Enter

Open Standard



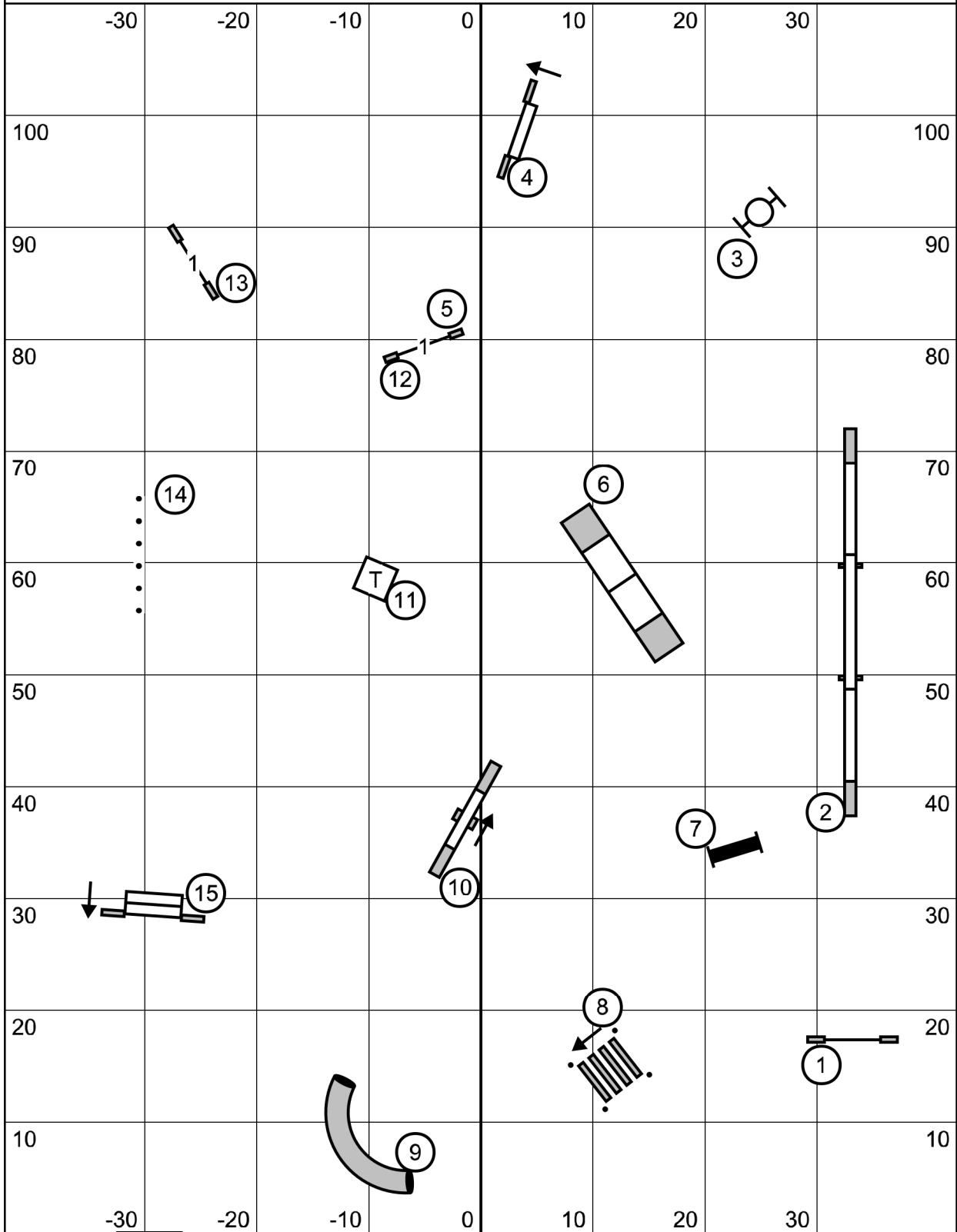
Exit

Greater St. Louis Agility Club
8/20/22
Judge Cheri Tyre-Roberts

T/S

Enter

Novice Standard



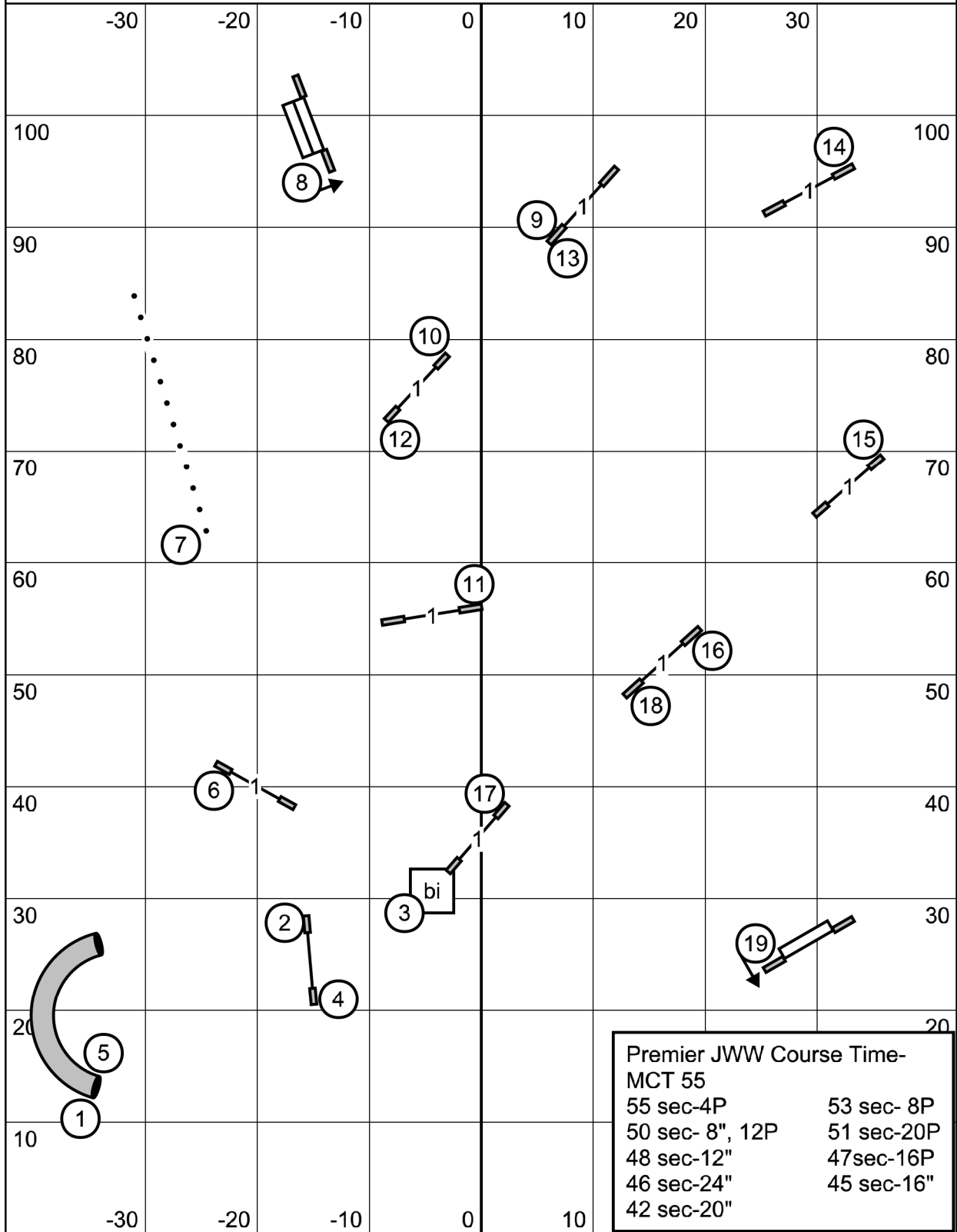
Exit

Greater St. Louis Agility Club
8/20/22
Judge Cheri Tyre-Roberts

T/S

Enter

Premier JWW



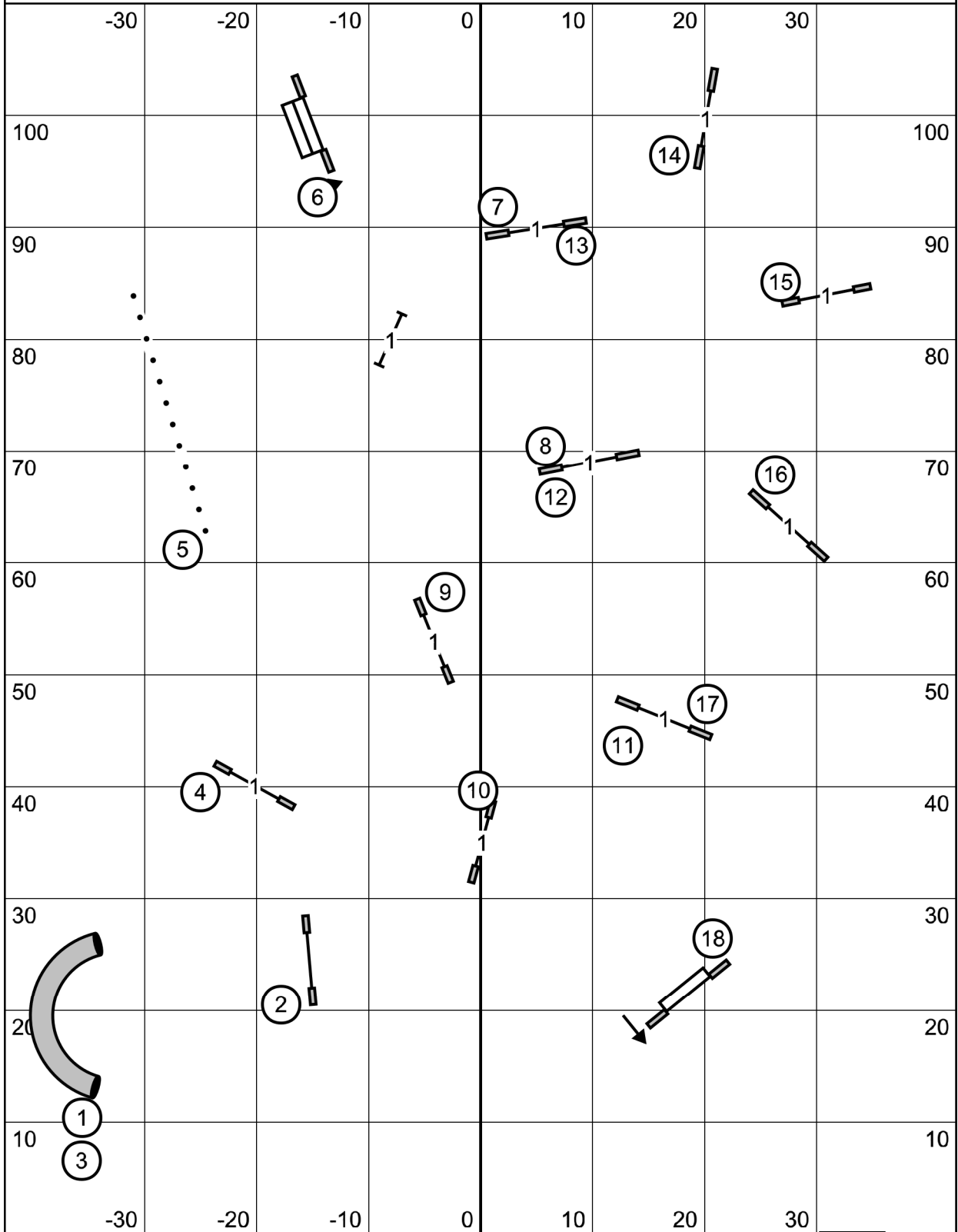
Enter

Greater St. Louis Agility Club
8/21/22
Judge Cheri Tyre-Roberts

T/S

Exit

Excellent/ Master JWW



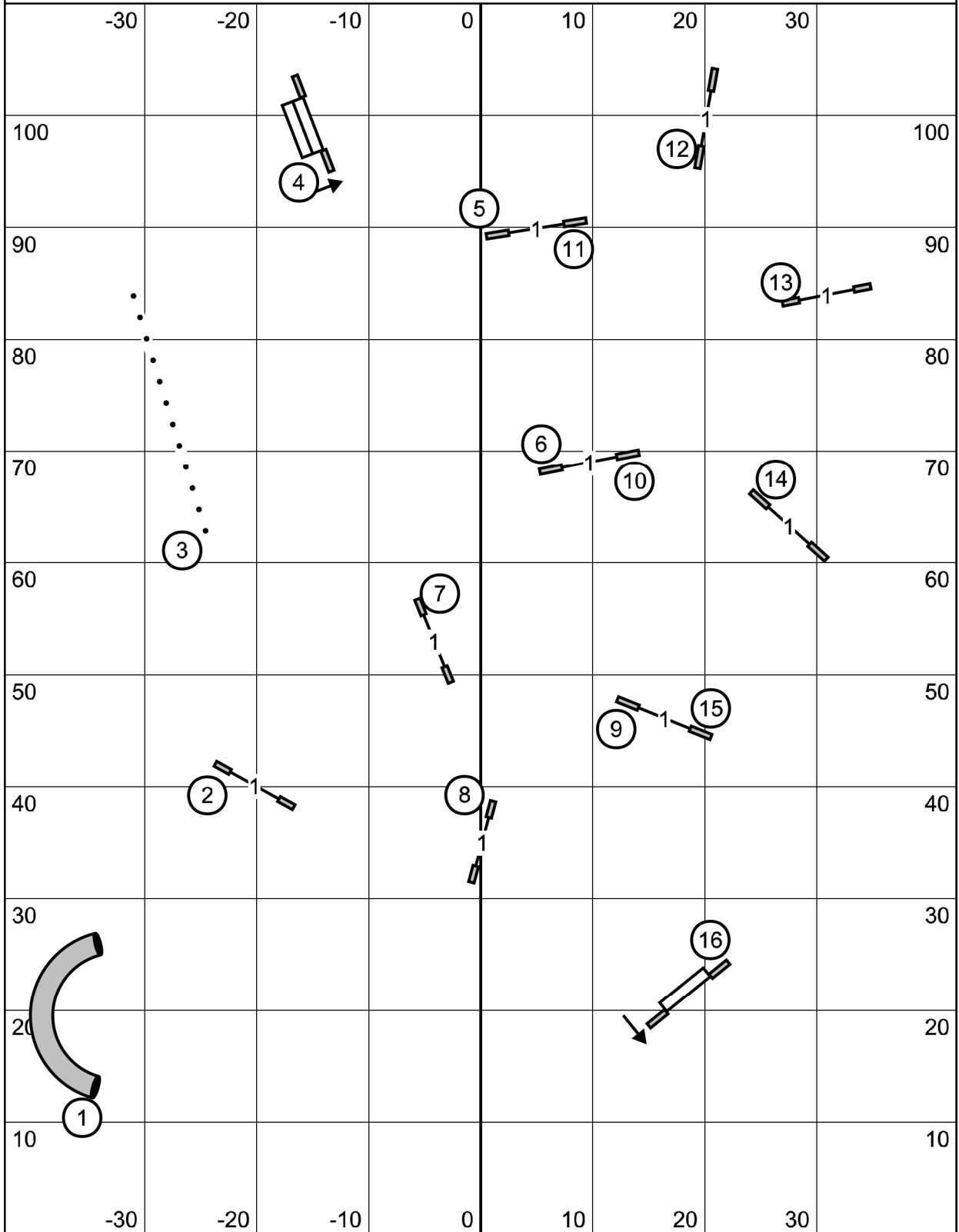
Enter

T/S

Exit

Greater St. Louis Agility Club
8/21/22
Judge Cheri Tyre-Roberts

Open JWW



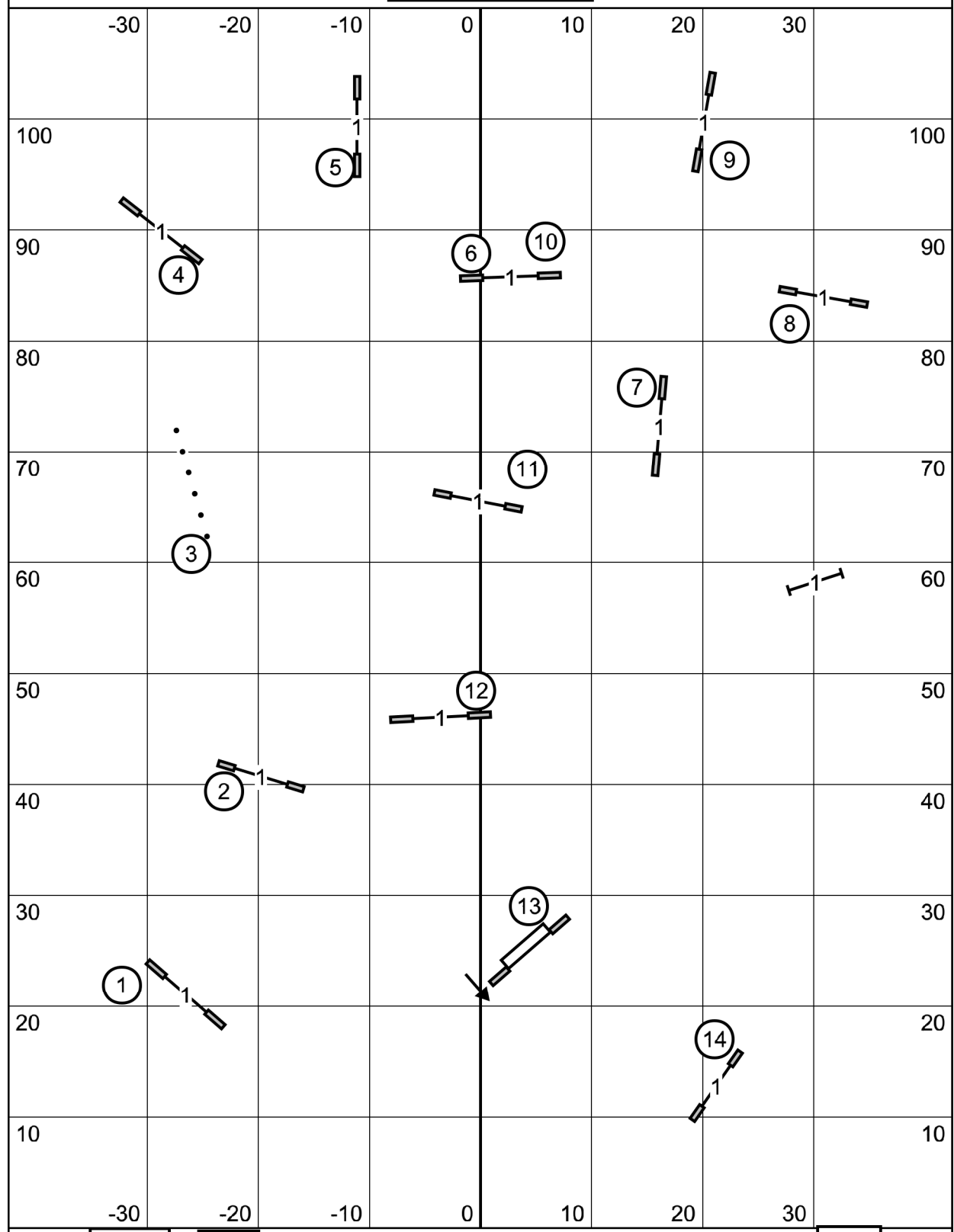
Enter

T/S

Greater St. Louis Agility Club
8/21/22
Judge Cheri Tyre-Roberts

Exit

Novice JWW



Enter

T/S

Exit

Greater St. Louis Agility Club
8/21/22
Judge Cheri Tyre-Roberts

