



# CAPABILITY STATEMENT

*Built on meeting needs of our Customers*

## WHO WE ARE

Forward Engineering, LLC (FWDE), is a merit based, Veteran-Owned small business providing System Engineering, Integration, Test capabilities for the DoD Air, Space and Sea sectors.

## CORE COMPETENCIES

Our strengths in Systems Engineering, Integration, and Test (SEI&T) execution allows rapid delivery of advanced engineering capabilities and solutions.

- Digital Transformation (AI and MBSE)
- Agile Systems Engineering
- Project Engineering
- Requirements Management
- Systems and Program Integration
- Test & Evaluation
- Change Management
- Risk Management
- Earned Value Management
- Agile Acquisition System Development
- Production and Sustainment Support
- Engineering Logistics Support
- Tech Data Enhancement Services
- Unique Knowledge Capture/Transfer Technique
- Automated Multimedia Programming

## CONTRACTOR INFORMATION

### CERTIFICATIONS



### NAICS CODES

541330	541380
541512	541611
541618	541990
611430	512110

### PAST PERFORMANCE

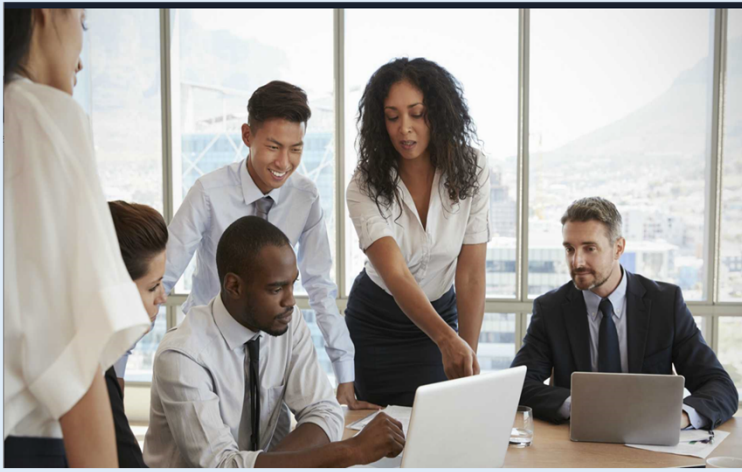
Proven Expertise in System Acquisition, Product Development, Systems Engineering, Integration, Test and Evaluation for the US Navy, Airforce, Marines and for multiple DoD Prime Contractors.



**Keenan Ward**  
President & CEO  
[kward@fwdengllc.com](mailto:kward@fwdengllc.com)

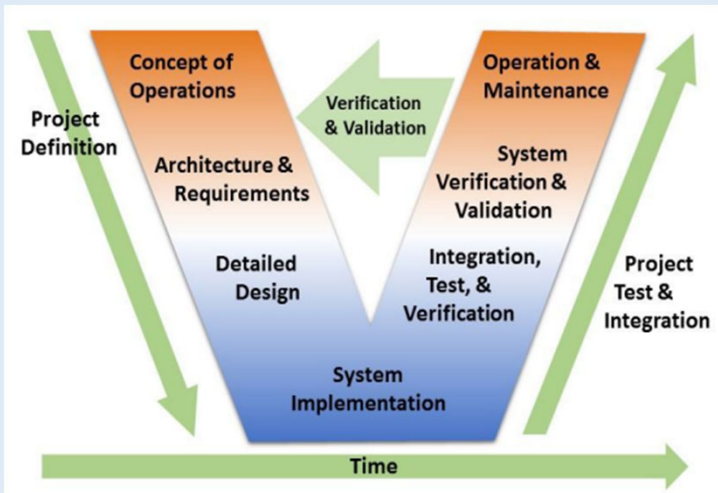
**Website:** <https://fwdengllc.com>  
**Office:** (410) 202 - 3475  
**Cell:** (858) 442 - 9572

**CAGE:** 9LM39  
**DUNS#** 11-865-5313  
**UEI:** DYF7NMW2BAP5



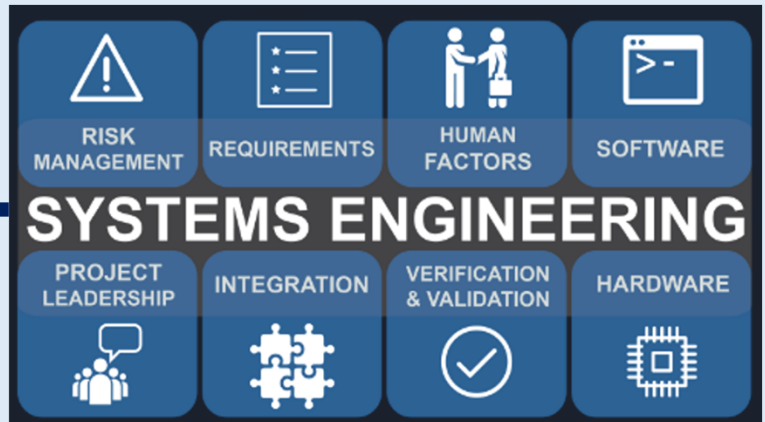
## Mission Driven Teams

## Quality and Reliable Best Practices



- ❖ Air \* Space \* Sea Systems
- ❖ Prototyping/Demonstration
- ❖ Manned Subsystems
- ❖ Unmanned Systems
- ❖ Robotic Automatic Systems
- ❖ Systems of Systems
- ❖ Comm/Nav
- ❖ SATCOM
- ❖ Electronic Warfare
- ❖ Radar Systems
- ❖ Flight Control
- ❖ Interoperability

**Cost, Schedule,  
Performance Driven**



## Affordable Best Practices

**OV-1**

**Partnering with our customers to  
accelerate the delivery of critical  
mission capabilities**

