

Title:	How to download playback from iVMS-4200	Version:	v1.0	Date:	3/9/2017
Product:	Cameras, NVRs	Page:	1 of 7		

How to download playback from iVMS-4200

Description

Recordings could be searched/exported from iVMS-4200 in different ways. This manual will give you a brief introduction of these methods.

Preparation

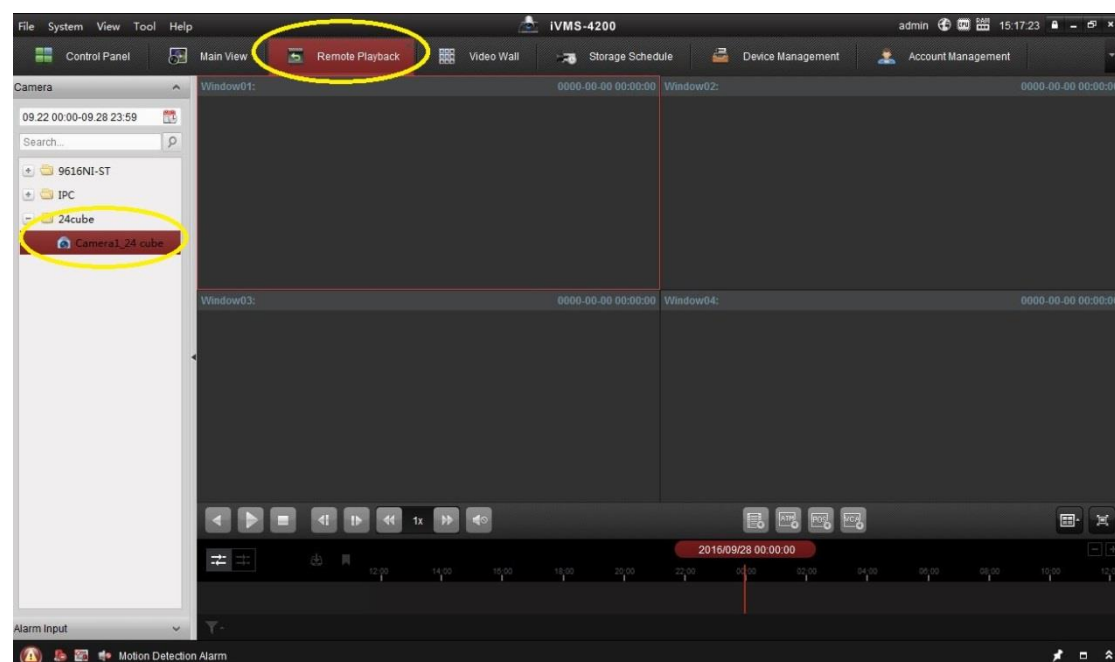
- 1, IPC/NVR with recording files
- 2, iVMS-4200 client

Note: some of the functions could only be supported by 4200 client from version v2.5.1.7

How to select footage required for downloading / exporting from playback

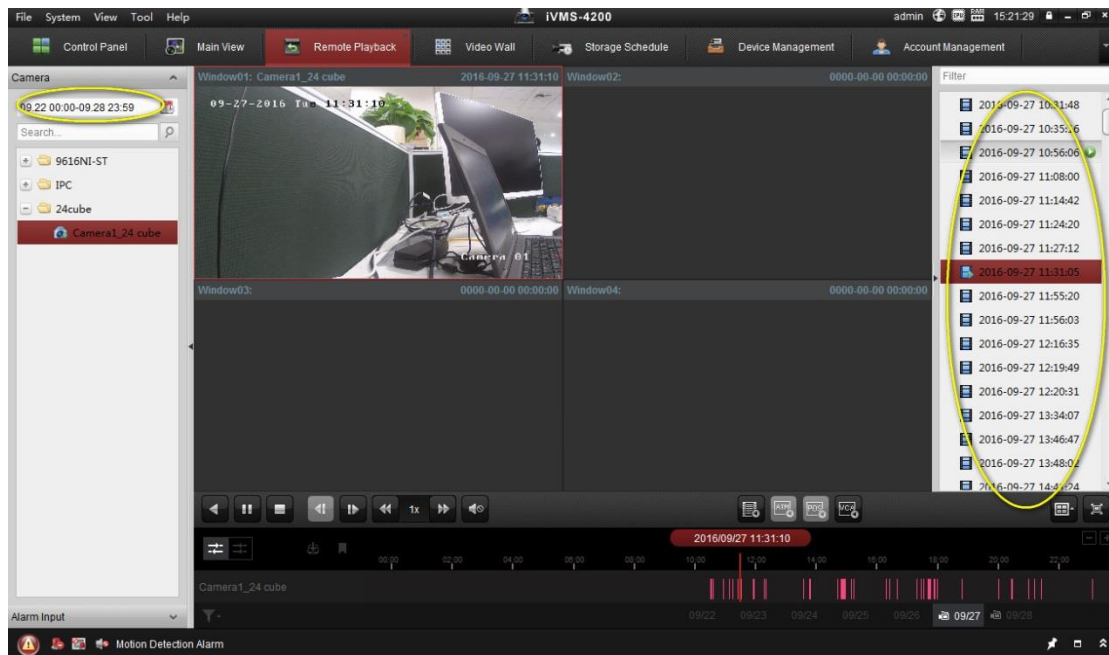
Steps:

1. Add the IPC/NVR to 4200 client.
2. Go to **Remote Playback**, select the IPC/NVR you want to search recordings from.

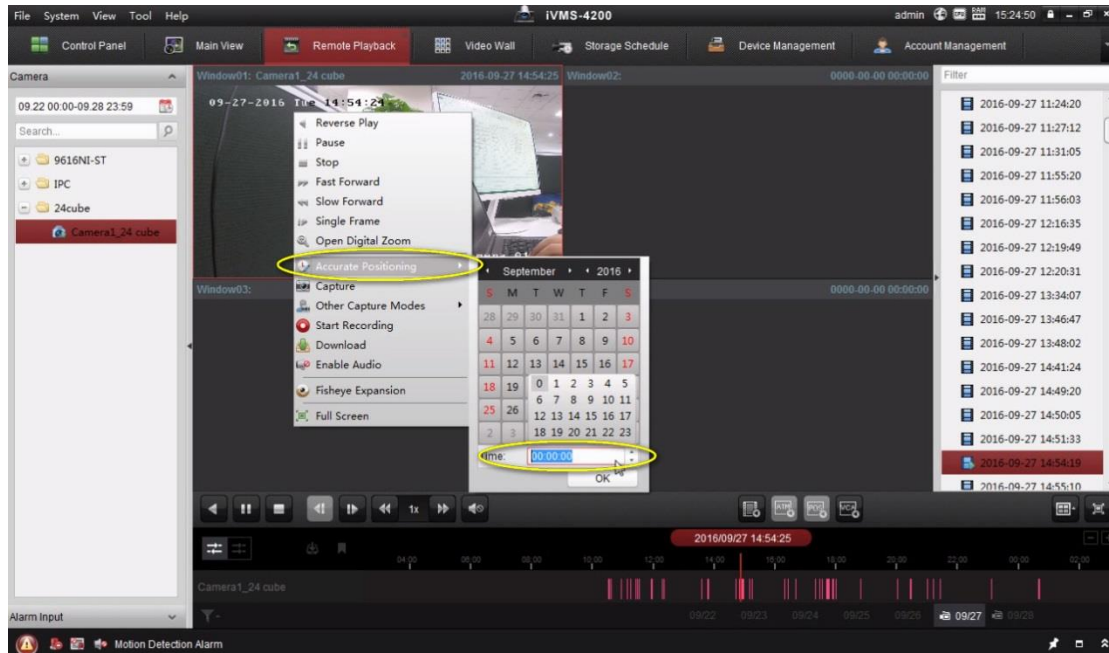


Title:	How to download playback from iVMS-4200	Version:	v1.0	Date:	3/9/2017
Product:	Cameras, NVRs	Page:	2 of 7		

3. Set the search time, then double click the device. All recordings would be listed at the right of the interface.



4. Right click on the playback interface and you can position the accurate time of the playback file.

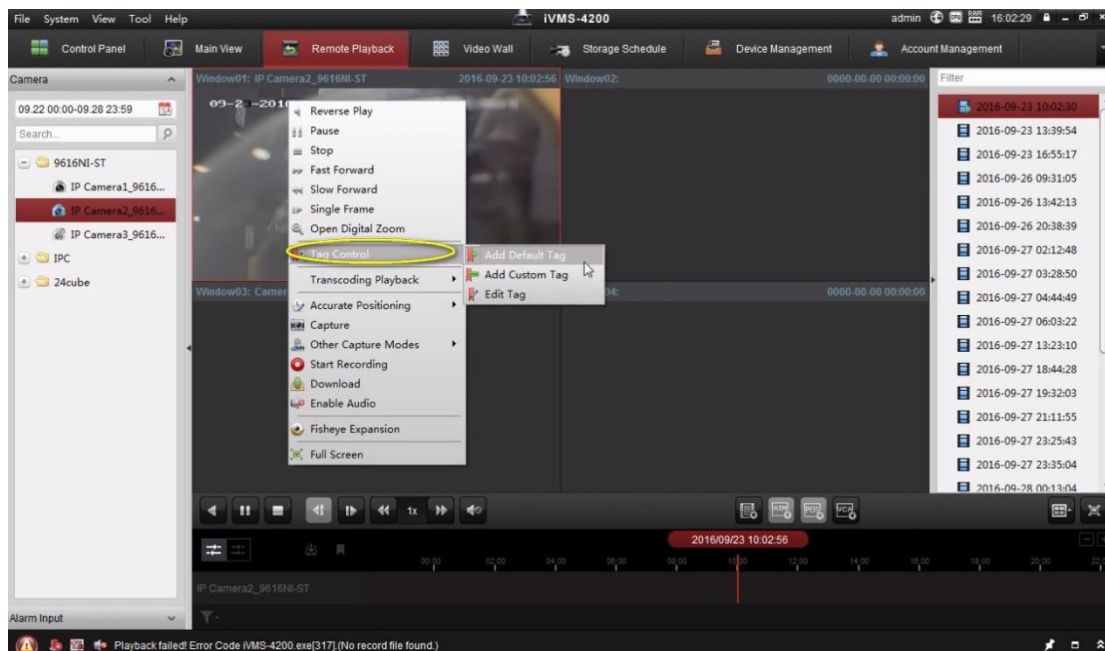


How to export tagged clips

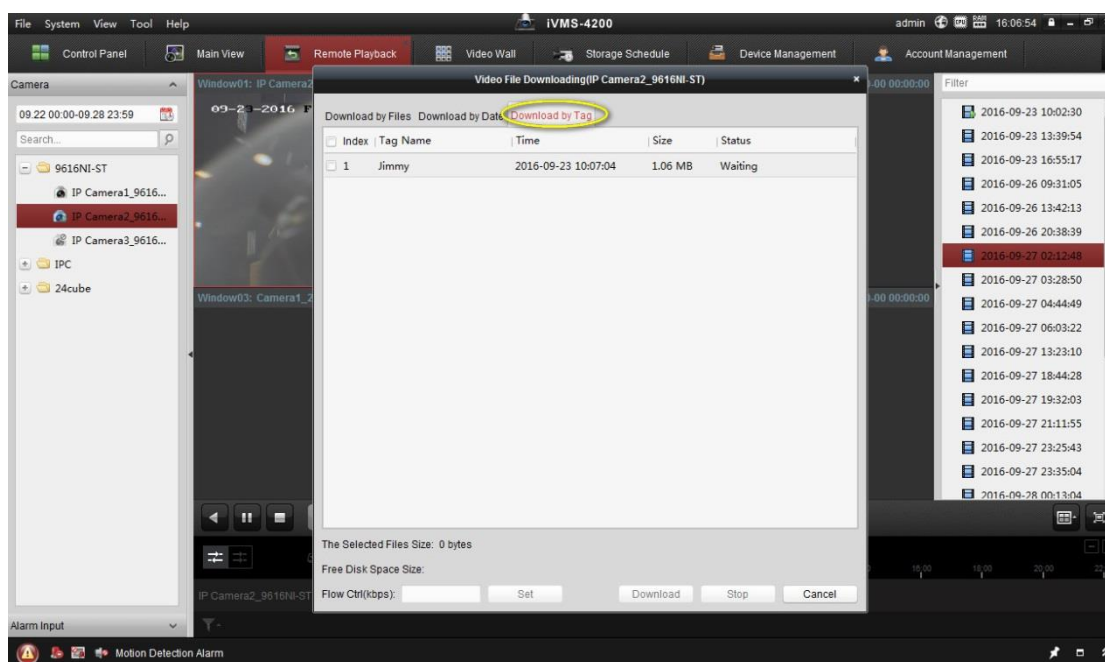
Steps:

Title:	How to download playback from iVMS-4200	Version:	v1.0	Date:	3/9/2017
Product:	Cameras, NVRs	Page:	3 of 7		

1. Go to Remote Playback, right click on the playback interface and you may find **Tag Control**. You can select to add default tag or custom tag.



2. Click  to download the playback. You can select to download by file, date or tag.



Note:

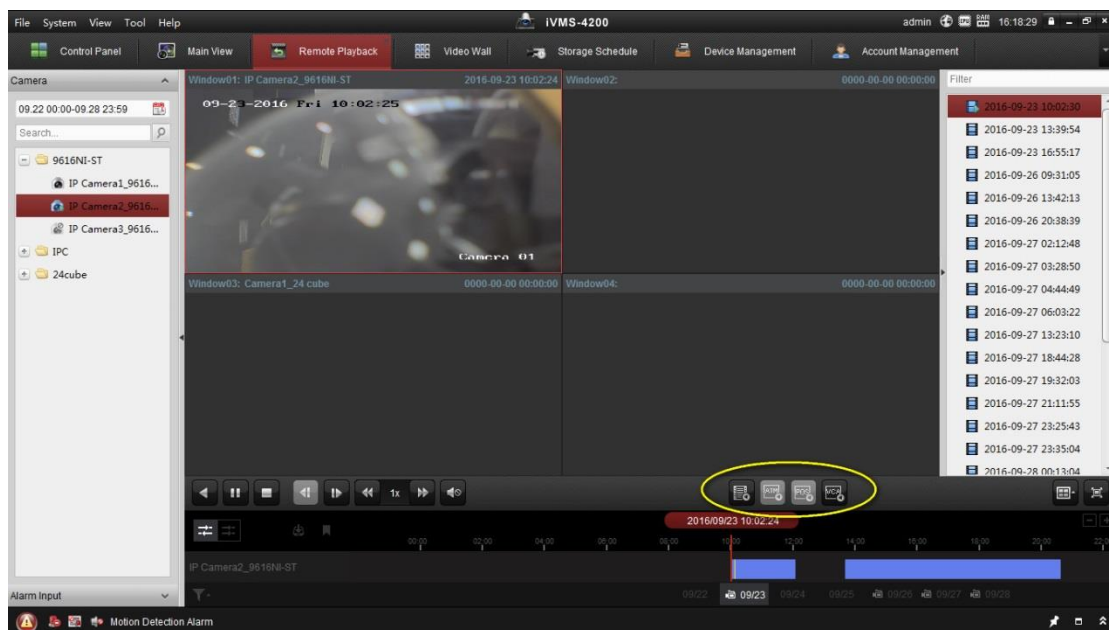
1. This tag control function could only be used when IPC is added by NVR. If this camera is added into 4200 client separately, there would be no choice of tag control.

Title:	How to download playback from iVMS-4200	Version:	v1.0	Date:	3/9/2017
Product:	Cameras, NVRs	Page:	4 of 7		

- Click Download to start downloading the selected file (30 seconds before the selected tag to 30 seconds after the tag) to the local PC. You can input the flow (0 to 32768 kbps) and click Set to control the downloading speed.

How to export specific events / VCAs

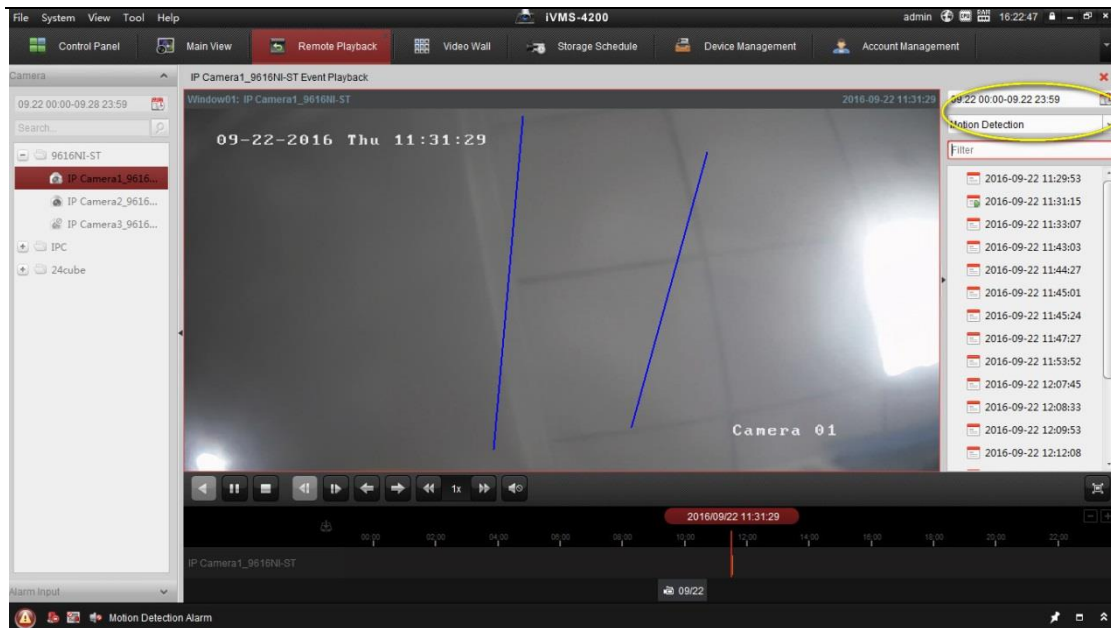
- Recordings could be searched in different modes, like **Event Playback**, **ATM Playback**, **POS Playback**, **VCA playback**. These functions require the support of the connected device.



- Take **Event Playback** for example.

The recordings triggered by event, such as **motion detection**, **VCA detection** or **behavior analysis** can be searched for **Event Playback**. Select the event type from the drop-down list and the found video files will be displayed. You can filter the results by inputting the keyword in the Filter text field. Or you can click to go back to the normal playback.

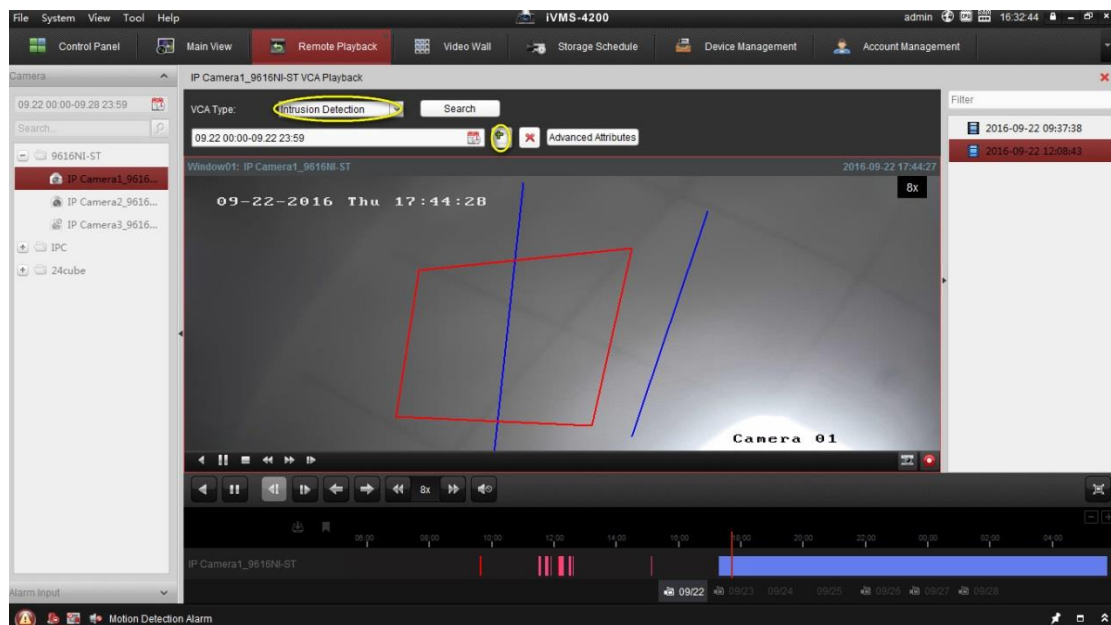
Title:	How to download playback from iVMS-4200	Version:	v1.0	Date:	3/9/2017
Product:	Cameras, NVRs	Page:	5 of 7		



3. Take **VCA Playback** for another example.

You can set VCA rule to the searched video files and find the video that VCA event occurs, including **VCA Search**, **Intrusion** and **Line Crossing**. This function helps to search out the video that you may be more concerned and mark it with red color.

Select the **VCA Type**, draw the detection region and set the sensitivity, then the related files would be listed.



Note:

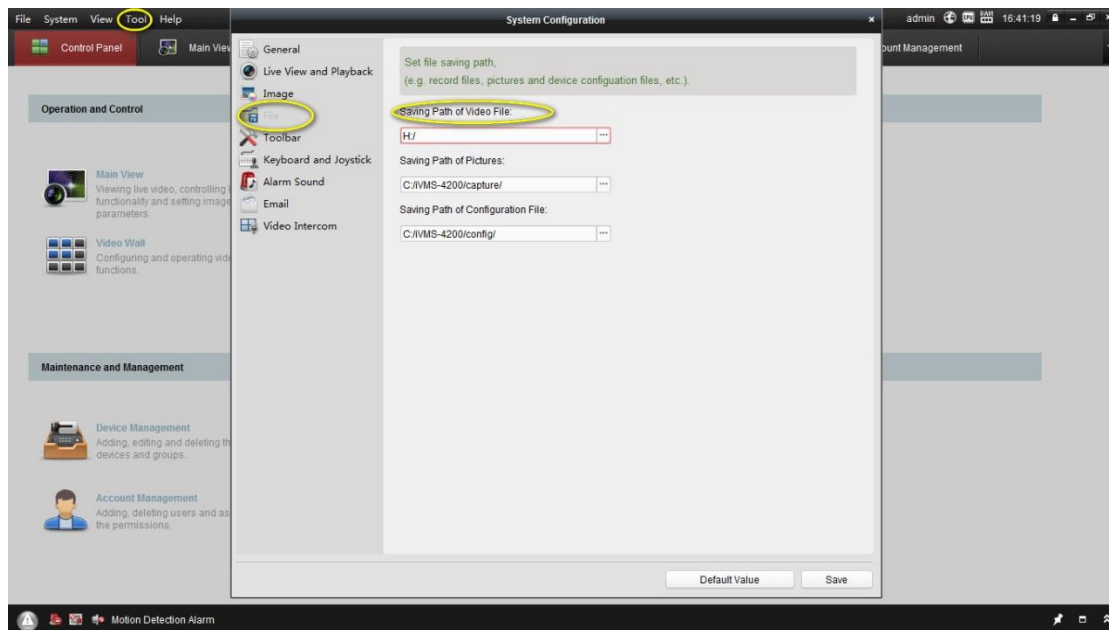
1. For some devices, you can filter the searched video files by setting the advanced attributes, such as the gender and age of the human and whether he/she wears glasses.

Title:	How to download playback from iVMS-4200	Version:	v1.0	Date:	3/9/2017
Product:	Cameras, NVRs	Page:	6 of 7		

2. VCA search in VCA playback just like motion detection. It would search out all the video clips as long as something moves.

How to download to USB / folder on C Drive

You can select where to download all the pictures/recordings. Go to Tool->File->Saving Path of Video File to select the location. The dish H in the picture below is an USB.



Title:	How to download playback from iVMS-4200	Version:	v1.0	Date:	3/9/2017
Product:	Cameras, NVRs	Page:	7 of 7		



First Choice for Security Professionals
***HIK*VISION Technical Support**