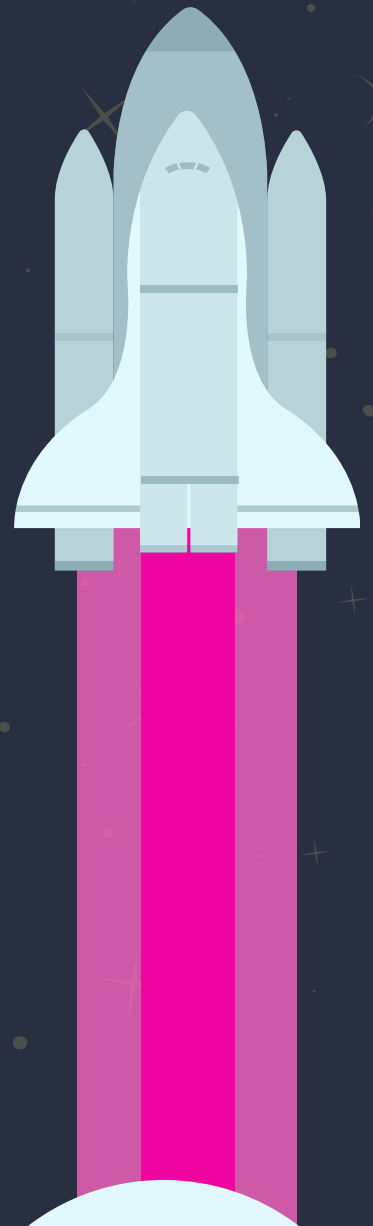


# Esteem Girls Lab

Start an Esteem Girls Chapter

**To be an Esteem Girls Chapter  
& Member, you must:**

- Be a female 21 years or older
- Pass a criminal & child abuse check
- Have a location to host lab 1 or 2x a month; school, library, community center, organization, living room, den, etc.
- Have at least 5 girls





## How it Works:

- Apply to be an official Esteem Girls chapter/member, and pay our enrollment fee of \$100 (5 girls-1 location)
- \$50 for each additional location at the time of enrollment
- Submit a criminal & child abuse clearance. If you have these currently on file please upload them securely during the application.
- If the criminal check & child abuse clearance passes you are an official chapter scientist. If you are not approved receive a full refund of your enrollment fee.
- Obtain a space to host your Esteem Girls lab chapter, use your local library, school, community center, organization, den, living room, etc.
- Receive our monthly stem lesson via email & follow it step by step for a stem-tastic time at any location you choose.
- Run your lab for 2 hours a month
- Raise or bill monthly dues of \$20 per student to help with your chapter operations (suggestion: conduct our monthly fundraisers to cover the dues.) Ask your host location to cover the fees or parents/families. However, the monthly fundraiser will easily cover it.

# First month membership includes:

- Esteem Girls Information & Founders About Me
- Customized Lab Books
- Customized Pencils
- Look What I Can Be coloring sheets, including periodic table
- Esteem Girls Bucks (use to reward good behavior & redeem for treats)
- STEM monthly lessons overview

## Esteem Girls Lab Sample Lessons

- Esteem Girls Investigation
- Natural DiSTEMsaster
- Cosmetic Chemistry
- Esteem Girls Anatomy
- Super Esteem Girl
- Project EG2
- Math is my Middle Name
- Hidden Figures
- Culinary Chemistry
- Mad Science
- steAm is all around us
- Who run the world, Esteem Girls



## Q AND A

Who can enroll? Any female 21 years or older that can pass a criminal and child abuse check.

Where can you live? Anywhere in the United States.

What girls can enroll in my chapter? Any girls you would like to participate in, 1st through 8th grade.

Do I have to be a real scientist? No, you do not need any experience. Just follow our lessons step by step.

How often do I receive a new lesson? You will receive a new lesson every month.

Can I enroll more than 5 girls? Yes, but our intro kit covers 5 girls. We'll bill you an extra \$20 per girl for the initial set-up.

Can I cancel my chapter? We highly discourage it, however, we ask for a 60-day notice and

email: [info@esteemgirls.org](mailto:info@esteemgirls.org)

# Whats Next?

Register to be an official  
Esteem Girls Lab Chapter:

<https://form.jotform.com/90303900519147>

Recruit, Recruit, Recruit!  
Enroll girls from your local  
church, school, dance team,  
neighborhood, etc.

Questions?

Email: [info@esteemgirls.org](mailto:info@esteemgirls.org)

[www.esteemgirls.org](http://www.esteemgirls.org)

