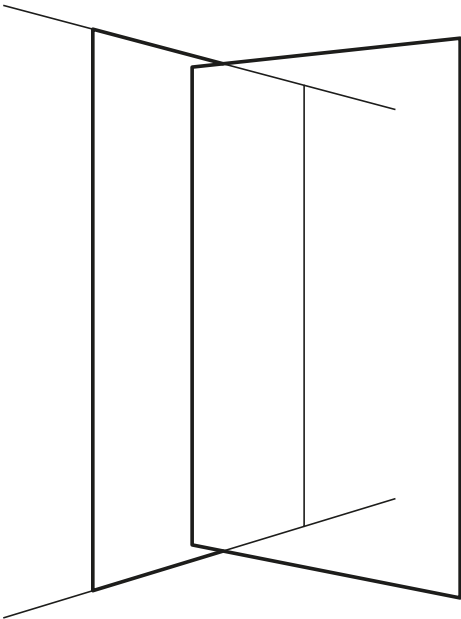




SOSOARES

ALUMINIUM SYSTEMS & GLASS
FOR ARCHITECTURE



premium lines

SOSOARES

Introduction

Grupo Sosoares has its origins in the creation of the society «Sosoares - Máquinas e Ferragens, Lda.» in 1979. Since then, it has been growing, currently consisting of four companies that complement each other in design, development, production and trading of aluminum frames and glass for architecture whose own brand is Sistemas Euro 2000®. We therefore seek to solve all technical and aesthetic constraints required by the current modern enterprises in order to answer to the requests of the designers in new architectural trends strongly oriented towards transparency. It is the first national Group to join, in the processing and distribution, the two strongly correlated materials in frames - aluminum and glass.

Sustainability Policy

If we take into consideration that aluminum is a metallic element which properties grant it an enormous versatility in its application/use, and which, at the same time, allows its total and continuous reuse, then we can therefore affirm that we use a green material as the basis of our work! Grupo Sosoares has a basic principle of reuse and sustainability in all its internal labor processes, from production, development and marketing to office services, fostering and encouraging all the staff to adopt the “best practices” in the company processes in order to limit as much as possible the negative consequences of our action on the environment, thus reducing our ecological footprint. Among the many principles that the Group has adopted, we would like to underline those who we consider as most relevant:

- Performing a direct and constant follow-up with the designers, as each work is unique and has its own characteristics, in order to advise the ideal aluminium frame for each solution. We therefore manage to combine efficiency and aesthetics, so that we can have in the buildings windows and doors which comply with the requirements of the designers while maintaining the capacity for energy savings;

- Refusion, Recycling aluminium scrap efficiently;
- Owning the Single Environmental Title (TUA, a portuguese environmental programme), which proves the compliance with the environmental requirements legally demanded;
- Using totally lead-free powders in powder-coating processes and reusing powder coats, thus minimizing waste;
- Betting on the preference for digital promotion of the product, whenever possible, to the detriment of printing;
- Fostering employees to use digital tools to process the information as well as to develop and study new products, using paper printing as a last resort so that they understand the need to limit as much as possible the negative impact of commercial operations on the environment, namely in terms of energy consumption, CO2 emissions and waste management;
- Joining the Class A+ Platform, we support our clients on energy efficiency matters.

Design and product development

The group Sosoares has a Project and Product Development Department that is in permanent creative process, devising new solutions that effectively respond to the aesthetic and technical requests of the designers, always based on the fundamental principles of Innovation, Architecture and Design. It also has a specialized team that accompanies the designers throughout the study process and detailing the work, so that the solutions are most appropriate to the works that will receive them.

Aluminium Extrusion

As a result of a whole process of creative and technical development, the Group Sosoares has the ability to design and produce dies for the extrusion of their profiles. This kind of service extends to new customers looking for solutions to their needs and that are unknown in the market.

Anodization and Powder coating

The finishing of a profile is, basically, the “personal brand” that the designer or the client gives to the final work. Whether through painting thermosetting (Powder coating) or through an electrolytic process that promotes the formation of the final film (Anodization), Grupo Sosoares offers a very rich and wide chromatic range, perfectly certificated in terms of quality (Qualanod and Qualicoat Seaside).



Glass processing

Complementing their systems of frames, the Sosoares Group has a glass processing unit equipped with the latest technology, which produces all kinds of glass on the market, highlighting here laminated glass of thermal and acoustic control, security, tempered, tempered with HST, decorated with glazed digital painting, among others.







MINIMALIST SYSTEMS

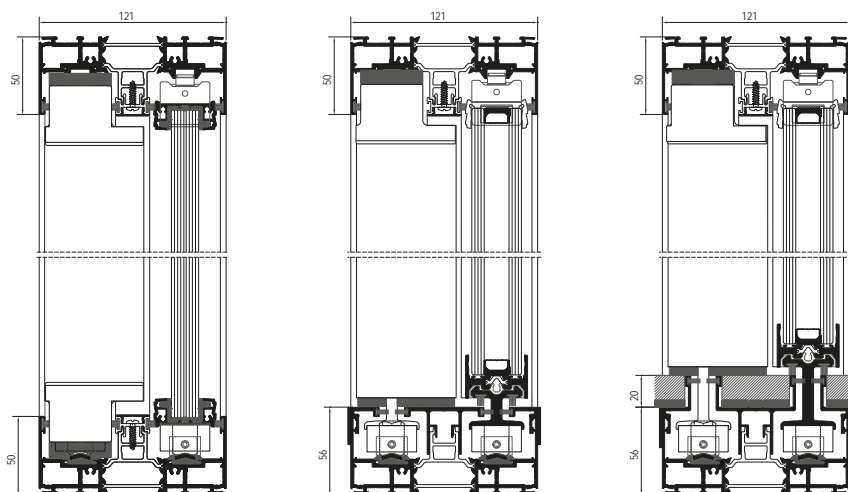


OS minimalist sliding system with thermal break

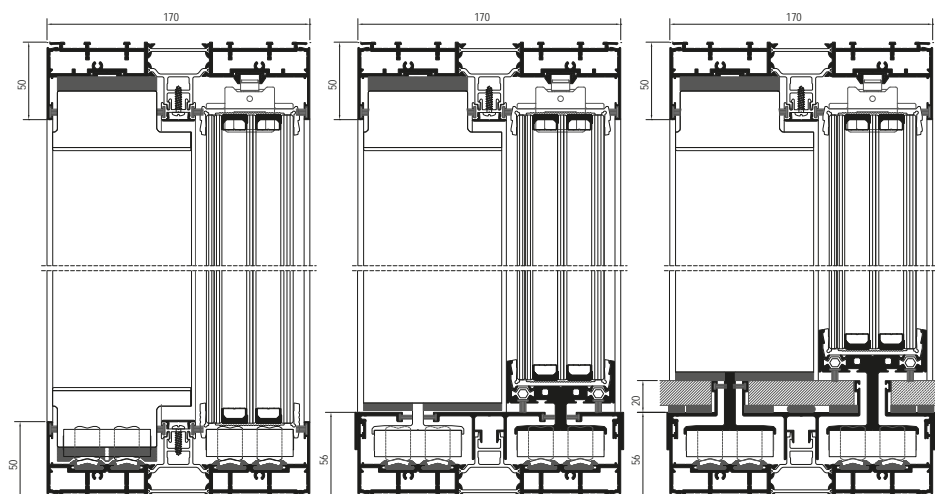
Specially conceived for larger frames, the OS minimalist sliding system rose as an answer to the most contemporary architectural trends, aiming to combine the maximum transparency with the minimum structural view, in all its sill versions: Traditional, Concealed with aluminium cover and Concealed with continuous flooring. Combined with the motorized opening system, the OS System allows the design of frames of large

dimensions, allowing as such an extra area of glazing. To the three strands of our minimalist sliding OS system - OS-Simple, Double and Triple, we now add the version OS-Concealed Sill. Whether it is with the view of the sill in aluminum or with the same fully embedded floor, this system endows the transition between inner and outer spaces in a continuous way, enabling as such an easier passage, even for people with reduced mobility.

OS-Simple | OS-Double+ [32mm]



OS-Triple [56mm]





SABATER HOUSE | SPAIN | FRAN SILVESTRE ARCHITECTS | FERNANDO GUERRA PHOTOGRAPHY

OS-Simple | OS-Double+

Features

Maximum area/sash*	8,00m ²
Maximum weight/sash*	500Kg
Maximum height/sash*	4000mm
Filling OS-S	10mm 12mm 16mm
Filling OS-D+	32mm 35mm

*For other dimensions, contact our Thecnical Department

Test: CXL 123/19 - ITeCons

Air Permeability	4
Water Tightness	7A
Wind Resistance	B

10

Thermal Values

Uw	= 1,48 W/m ² K*
Ug	= 1,0 W/m ² K

*Calculation performed considering a typology with traditional sill

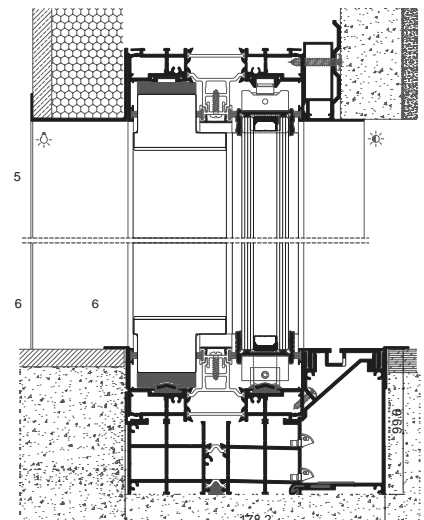
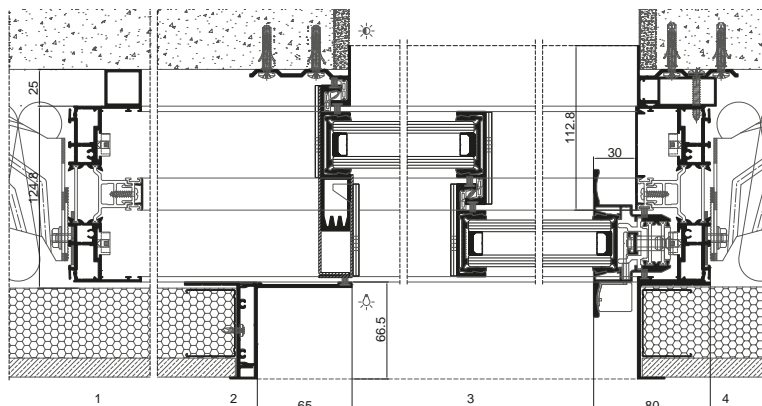
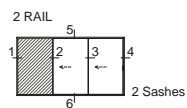
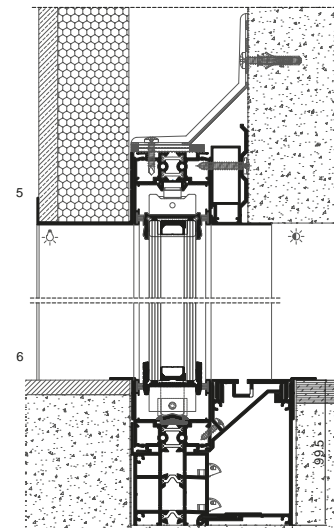
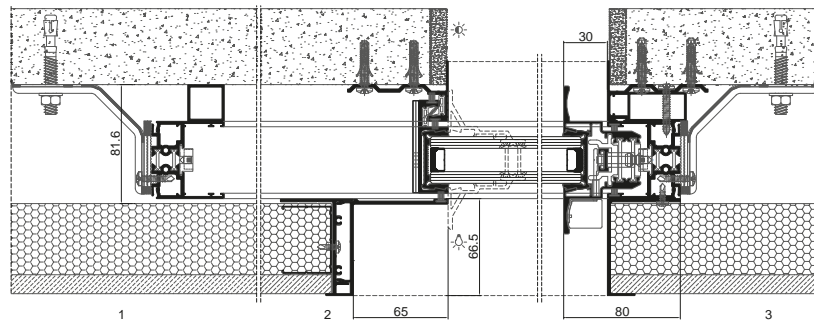
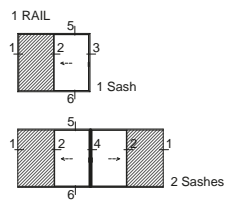
Acoustic Insulation

Test	ACL 193-19 - ITeCons
Rw	= 38dB [-1; -4]
Rw (IGU)	= 42dB

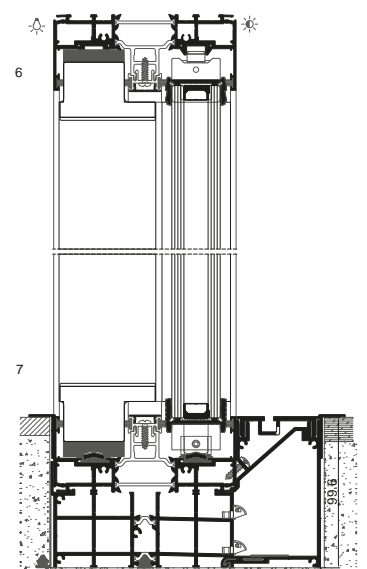
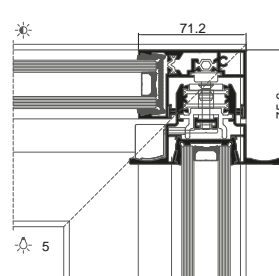
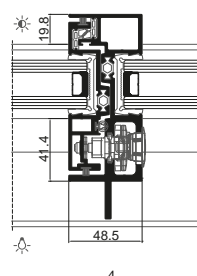
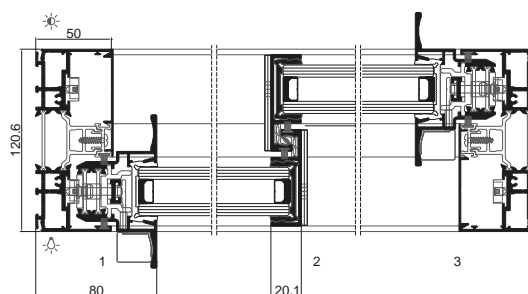
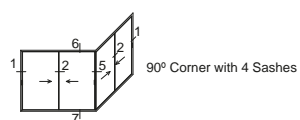
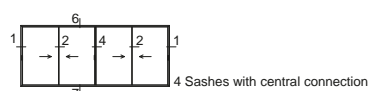
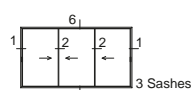
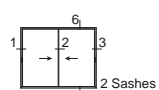




MÁRTIRES HOUSE | PORTUGAL | ARCHITECT DIDIER FIÚZA FAUSTINO | FRANCISCO NOGUEIRA PHOTOGRAPHY



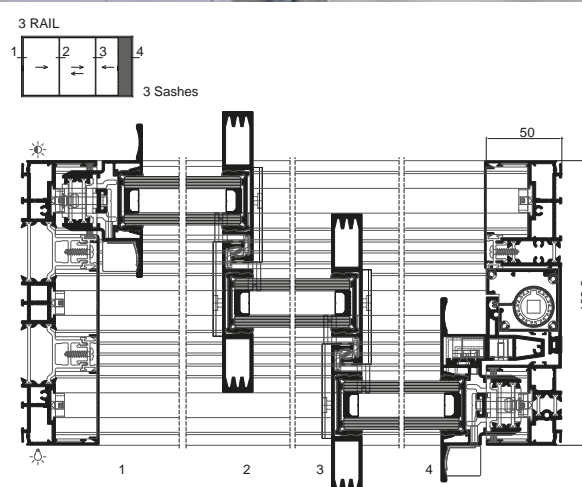
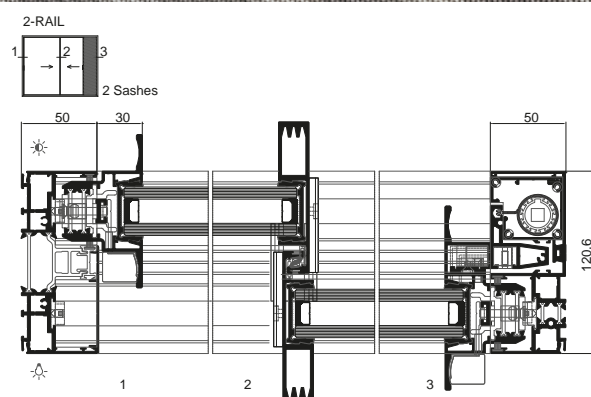
2-RAIL

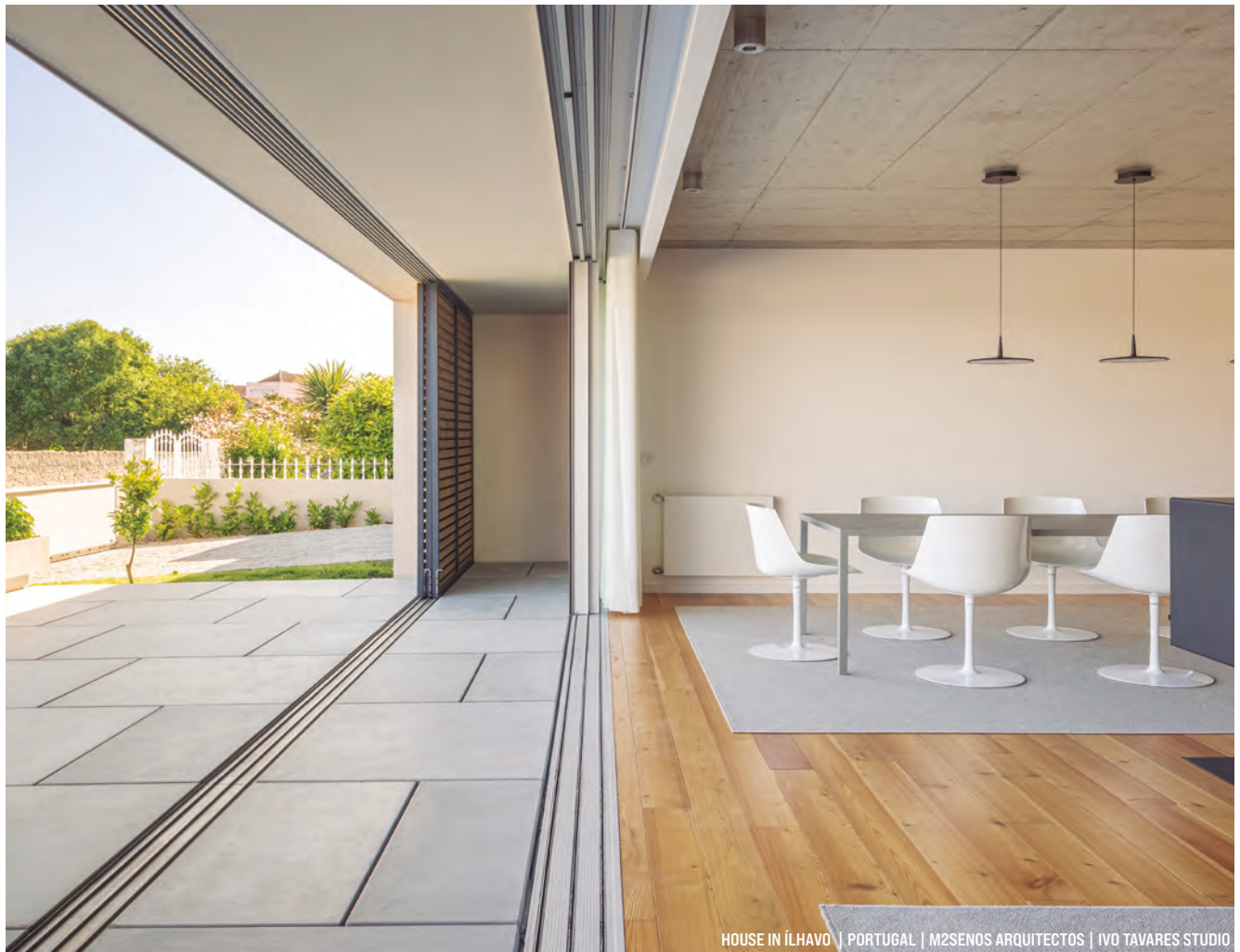


All typologies presented can be executed with a concealed sill and concealed sill with continuous flooring

OS-D⁺ - Fly Net

The Flyscreen is a protection against insects, fully inte-grated into the window profile, thus allowing air circulation without disturbances from the outside. The screen unrolls vertically along with the door, releasing it at a specific opening and rolling up until it is perfectly embedded in the door frame.









HOUSE OF SILENCE | SPAIN | FRAN SILVESTRE ARCHITECTS | FERNANDO GUERRA PHOTOGRAPHY



OS-Triple

Features

Maximum area/sash*	14.00m ²
Maximum weight/sash (with motorization)*	1000Kg
Maximum height/sash*:	6000mm
Filling	56mm

* For other dimensions, contact our Technical Department





HOUSE OF SILENCE | SPAIN | FRAN SILVESTRE ARCHITECTS | FERNANDO GUERRA PHOTOGRAPHY

Thermal Values UNE-ISO 13947:2005

U_w = 1,10 W/m²K

U_g = 0,6 W/m²K Triple glazing



JO HOUSE | PORTUGAL | RUI ROSMANINHO ARCHITECTURE



PK HOUSE | ISRAEL | RACHEL SHEINFELD ARCHITECTURE | LIOR TEITLER PHOTOGRAPHY



TV HOUSE | ISRAEL | ZVI GERSH ARCHITECT | AMIT GERON PHOTOGRAPHY



HOUSE | SWEDEN | REALESTELLIGENCE PART OF INVESTELLIGENCE GROUP



SANTA POLA HOUSE | SPAIN | FRAN SILVESTRE ARCHITECTURE | FERNANDO GUERRA PHOTOGRAPHY