

TEXAS WILDFLOWERS  
ON DENIM Coloring  
Instructions



Betem Acrylic Marker Key Codes (If you have a different set of markers, try to match to colors below)



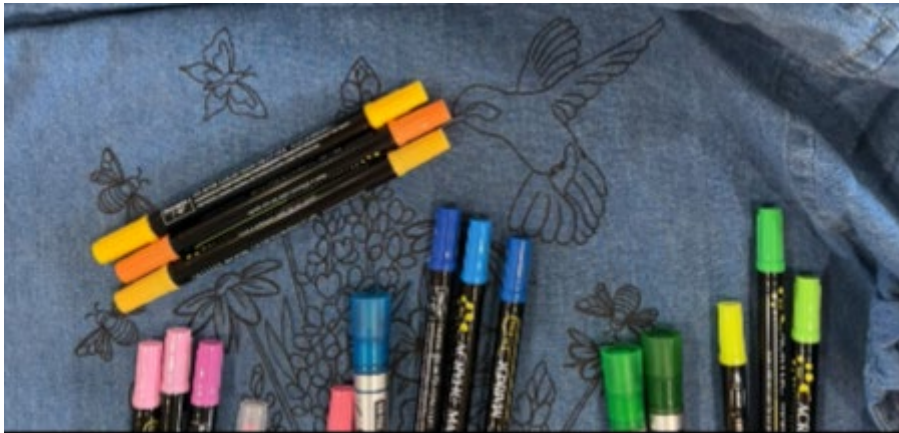
### Notes for Coloring on Denim:

1. Light colored denim is the easiest to color on. Dark denim needs multiple layers of color in order for the color to show.
2. Have a piece of denim handy to use as a test sample. No matter how many times I have colored on denim I am always surprised at how differently the paint looks after it has dried.
3. Apply fabric medium first and allow to dry. This acts as a sealant to keep the color on the surface rather than being absorbed by the denim.
4. Use Acrylic markers that have a fine tip rather than a brush tip. The brush tip wears down after a bit of use.
5. When purchasing Acrylic markers, make sure that they are: opaque, water resistant or waterproof; water based and cleanable with soap and water.
6. Acrylic markers often need to be recoated after drying.
7. Use a micron black pen to go over outlines where paint/marker has accidentally gone into the design lines.
8. If you use fabric paint, mix it with opaque white paint to brighten paint's appearance. Please note that many lines of fabric paint are TRANSLUCENT not OPAQUE. Make sure that the brand you purchase is opaque.
9. Brighter colors show up better than darker rich colors.
10. Use nail art or resin art tools to push color into very small areas. Also, nail art tools that have rubber tips can be used to clean up paint on DTF/thread outlines.
11. You can blend acrylic markers with fabric medium to achieve shading.
12. For sparkle, use Jacquard Pearl Ex Powdered Pigments mixed with fabric medium or Jacquard's Super Sparkle extender. If you want a "blingy" look with paints, the best pearlescent/metallic paints for denim are: Jacquard Lumiere or Pro Chemical and Dye's Pearlescent fabric paints.
13. If you are using paint on denim, wash your brush regularly as paint will build up on the brush and create "paint goobers".
14. Using a thicker outline (whether a DTF or an embroidered block) gives the design more visibility than thin lines.
15. Acrylic marker paint MUST be sealed with fabric medium once it dries if garment/quilt is to be washed. Acrylic paint without fabric medium fades over repeated washings.

## Colors Used for Denim Version of Texas Wildflowers

### Hummingbird

1. White Acrylic marker and a tiny bit of gold paint mixed with fabric medium
2. Light green acrylic marker (#313)
3. Medium Green acrylic marker (#315)
4. Medium Dark Green acrylic marker (#330)
5. Jacquard Lumiere Olive Green paint
6. Red or purple acrylic marker for throat (#316 Or #308)
7. Black acrylic markers for beak
8. Red or purple Acrylic Marker OR Gelly Roll Stardust pen for throat



### Colors for Flowers and Foliage

Three to Five colors of Green for stems and leaves

1. 313
2. 315
3. 330

Three colors of Blue: Light, Medium and Dark

4. 309
5. 329
6. 311

Yellows and Oranges: 1-2 of each color

7. 325
8. 303
9. 326

One Brown/Rust color for tops of coneflowers

10. 318

Pinks and Purples for Butterfly and Flowers – One to Four each  
Bees

11. 305
12. 306
13. 308
14. 327
15. 332

1. Black Gelly Roll pen
2. Yellow Gelly Roll Stardust pen

## Hummingbird Color List

1. White Acrylic marker and a tiny bit of gold marker blend with fabric medium
1. Light green acrylic marker (#313)
2. Medium Green acrylic marker (#315)
3. Medium Dark Green acrylic marker (#330)
4. Jacquard Lumiere Olive Green paint
5. Red or purple acrylic marker for throat (#316 OR #308)
6. Black acrylic markers for beak



For the hummer belly, very lightly color with #1 then use #2 along edge of belly towards back. Coat with fabric medium, blending well.

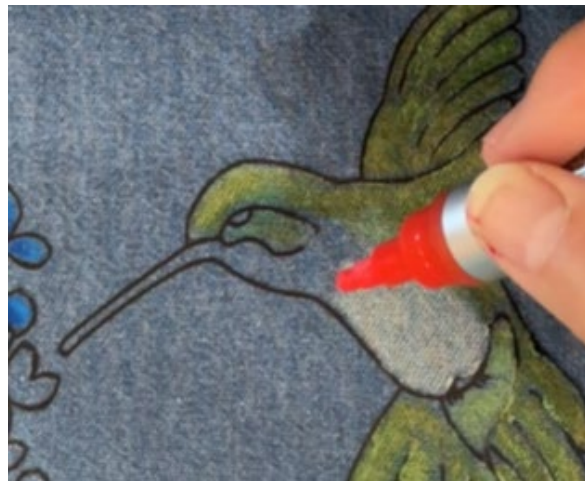
For the head: color lightly with #2, then #3. Use #4 in the section below the eye.

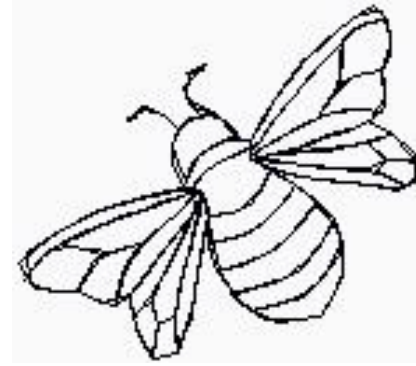
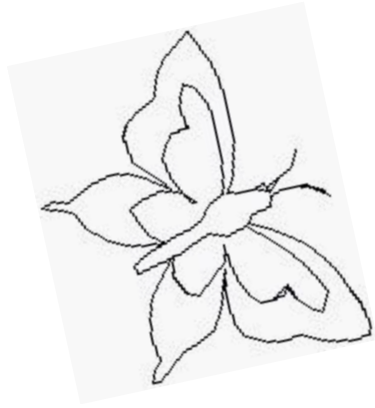
For the wings: color first with #2 then #3 then overcolor with #4 at the tips. Blend with fabric medium. Follow same instructions for tail..

Color the chin either Red or Purple depending on your preference. If you are applying bling to the throat later, make sure that the Fabric medium is completely dry before ironing bling on.

See next page for step by step pictures







### Colors for Butterfly and Bees:

1. Acrylic markers in Pinks and Purples for Butterfly and Flowers – One to Four each Butterfly
1. Black Gelly Roll pen for bee head and body
2. Yellow Gelly Roll Stardust pen for bee body
3. Clear Gelly Roll Stardust pen for bee wings

All Bluebonnet petals should be colored first with #5 then outlined with #6.

The “eyes” within a bluebonnet should be colored with #13. If you are unsure please refer to photos

Colors for Flowers and Foliage

Three to Five colors of Green for stems and leaves

- 1. 313
- 2. 315
- 3. 330

Three colors of Blue: Light, Medium and Dark

- 4. 309
- 5. 329
- 6. 311

Yellows and Oranges: 1-2 of each color

- 7. 325
- 8. 303
- 9. 326

One Brown/Rust color for tops of coneflowers

- 10. 318

Pinks and Purples for Butterfly and Flowers – One to Four each

Bees

- 11. 305
- 12. 306
- 13. 308
- 14. 327
- 15. 332

- 1. Black Gelly Roll pen
- 2. Yellow Gelly Roll Stardust pen





Colors for Flowers and Foliage

Three to Five colors of Green for stems and leaves

- 1. 313
- 2. 315
- 3. 330

Olive – Jacquard Olive Metallic Paint

Three colors of Blue: Light, Medium and Dark

- 4. 309
- 5. 329
- 6. 311

Yellows and Oranges: 1-2 of each color

- 7. 325
- 8. 303
- 9. 326

One Brown/Rust color for tops of cone flowers

- 10. 318

Pinks and Purples for Butterfly and Flowers – One to Four each

Bees

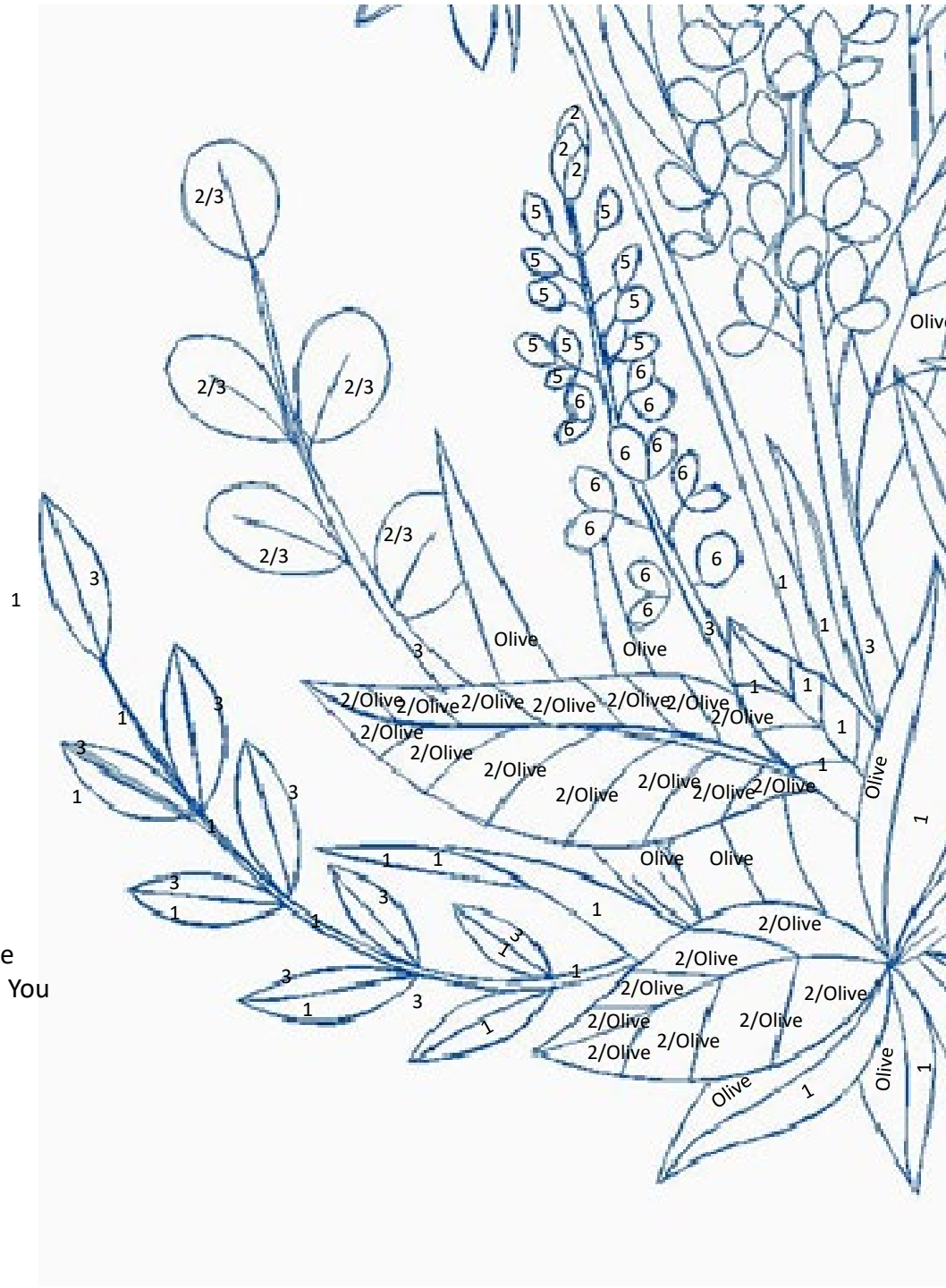
- 11. 305
- 12. 306
- 13. 308
- 14. 327
- 15. 332

- 1. Black Gelly Roll pen
- 2. Yellow Gelly Roll Stardust pen

The key code 2/Olive means color first with #2 then overcolor With Olive paint. Typically I use the Olive paint on the outer edge Of the Leaf leaving color #2 to show through towards the center. You Can also do the reverse depending on your preference.

All Bluebonnet petals should be colored first with #5 then outlined with #6.

The “eyes” within a bluebonnet should be colored with #13. If you are unsure please refer to photos



Colors for Flowers and Foliage

Three to Five colors of Green for stems and leaves

- 1. 313
- 2. 315
- 3. 330

Olive – use Jacquard Olive Metallic Paint

Three colors of Blue: Light, Medium and Dark

- 4. 309
- 5. 329
- 6. 311

Yellows and Oranges: 1-2 of each color

- 7. 325
- 8. 303
- 9. 326

One Brown/Rust color for tops of cone flowers

- 10. 318

Pinks and Purples for Butterfly and Flowers – One to Four each

Bees

- 11. 305
- 12. 306
- 13. 308
- 14. 327
- 15. 332
- 16. 333

- 1. Black Gelly Roll pen
- 2. Yellow Gelly Roll Stardust pen

