

Doodle Cat Coloring Charts



Colors for Doodle	
Cat	Inktense Pencils
	1 Ink Black
	2 Malibu (Blue)
	3 Pink Flamingo
	4 Sugar Plum
	5 Sea Breeze
	6 Cerulean Blue
	7 Lime Green
	8 Apple Green
	9 Carmine Pink
	10 Deep Violet
	11 Sicilian Yellow
	12 Sienna Gold
	13 Iris Blue
	14 Mauve
	15 Mint Leaf
	16 Amethyst
	17 Sun Yellow
	18 Gelly Roll Stardust Lt Blue Pen
	19 Gelly Roll Stardust Blue Pen
	20 Gelly Roll Stardust Purple Pen
	21 Gelly Roll Stardust Yellow Pen



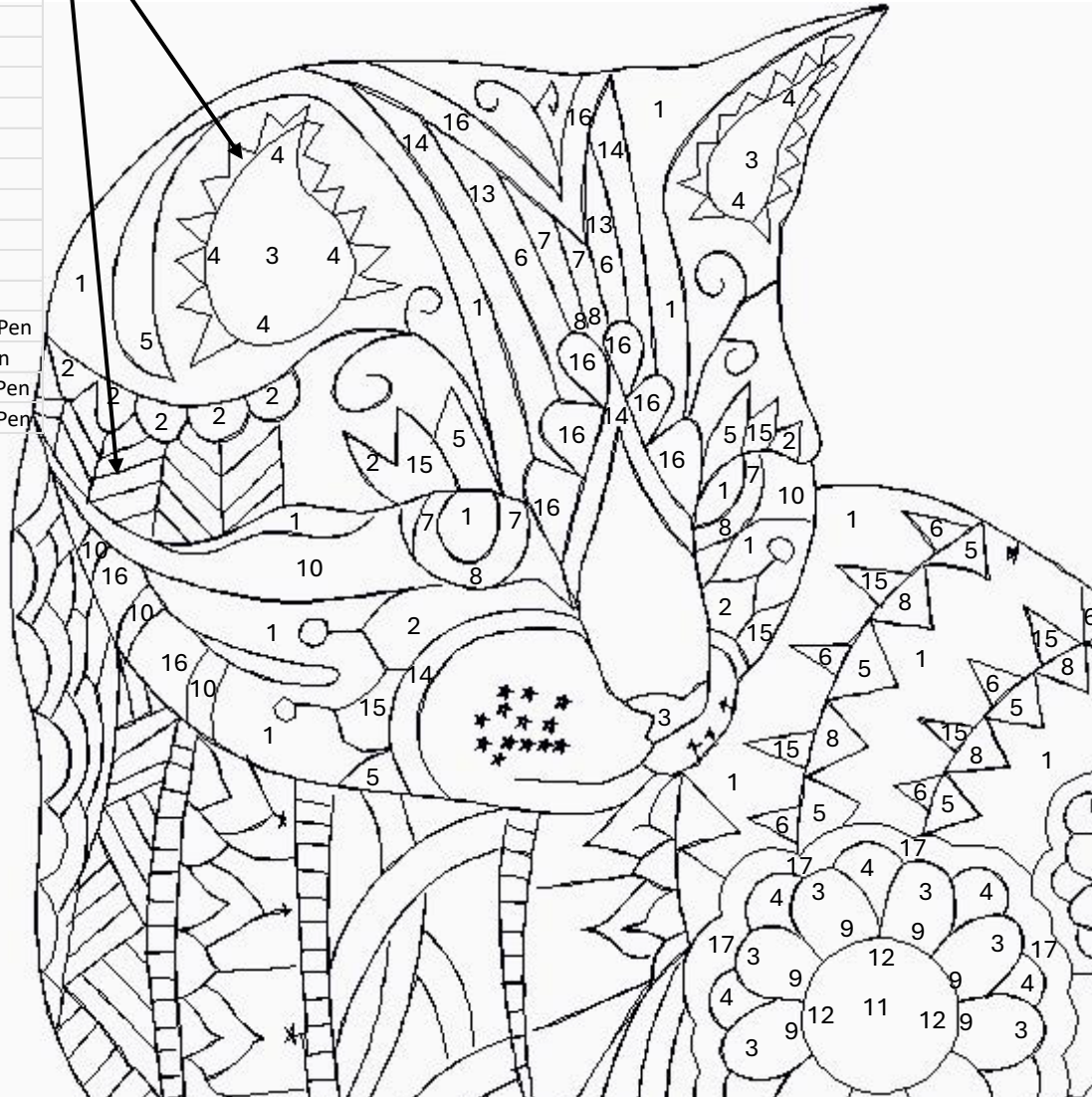
Doodle cat was originally colored With a variety of pencils and paints. I have tried to recreate the colors used With Inktense pencils and Gelly Roll Stardust gel pens. If you do not have These colors, you can use the reference Charts in the reference section under Instructions tab to match to what you May have in your coloring tool box.

Doodle cat is a fairly intricate pattern. I have tried to place numbers where Possible but some areas are too small To place a number. Please refer to The photo for the appropriate color. If you cannot determine the color, Please text me and I shall attempt to Give you the correct color.

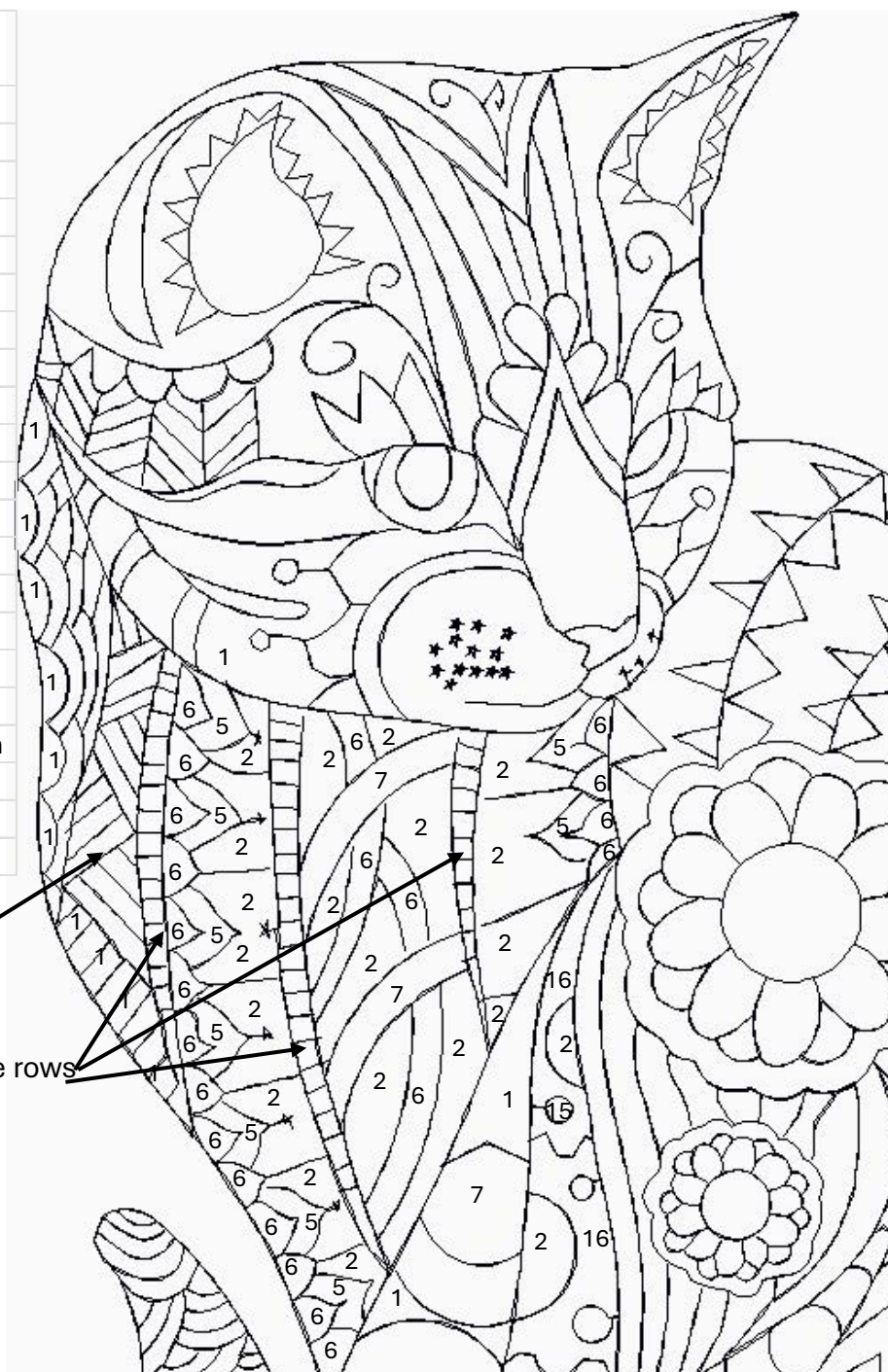
Happy Coloring!

Colors for Doodle	Inktense Pencils
1	Ink Black
2	Malibu (Blue)
3	Pink Flamingo
4	Sugar Plum
5	Sea Breeze
6	Cerulean Blue
7	Lime Green
8	Apple Green
9	Carmine Pink
10	Deep Violet
11	Sicilian Yellow
12	Sienna Gold
13	Iris Blue
14	Mauve
15	Mint Leaf
16	Amethyst
17	Sun Yellow
18	Gelly Roll Stardust Lt Blue Pen
19	Gelly Roll Stardust Blue Pen
20	Gelly Roll Stardust Purple Pen
21	Gelly Roll Stardust Yellow Pen

Use the gel pens for the little triangles within the ears (alternate color)
 Or use #20
 Use the gel pens alternating colors in the chevron pattern

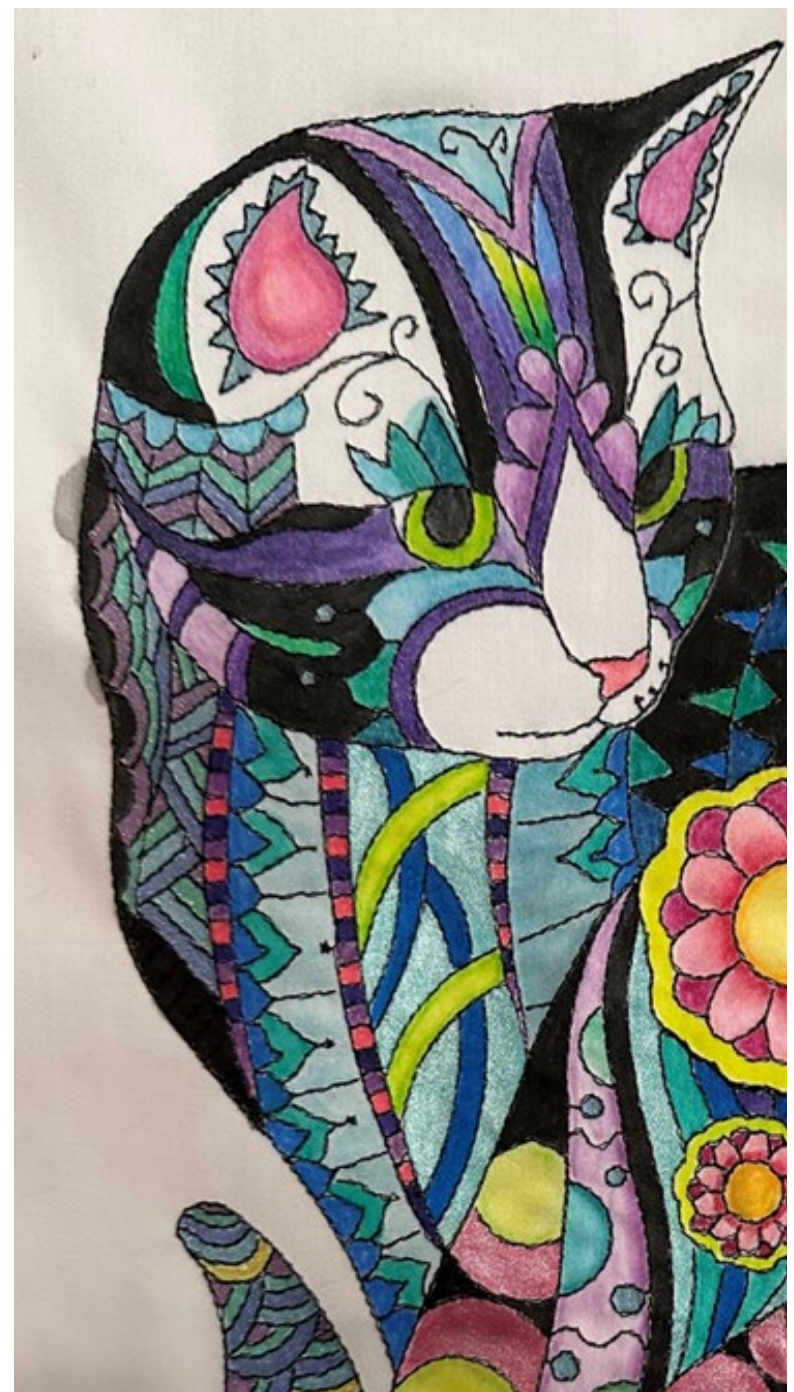


Colors for Doodle	Inktense Pencils
Cat	1 Ink Black
	2 Malibu (Blue)
	3 Pink Flamingo
	4 Sugar Plum
	5 Sea Breeze
	6 Cerulean Blue
	7 Lime Green
	8 Apple Green
	9 Carmine Pink
	10 Deep Violet
	11 Sicilian Yellow
	12 Sienna Gold
	13 Iris Blue
	14 Mauve
	15 Mint Leaf
	16 Amethyst
	17 Sun Yellow
	18 Gelly Roll Stardust Lt Blue Pen
	19 Gelly Roll Stardust Blue Pen
	20 Gelly Roll Stardust Purple Pen
	21 Gelly Roll Stardust Yellow Pen



Use the gel pens alternating colors in the chevron pattern

Use #10, #3, #4 alternately for these rows



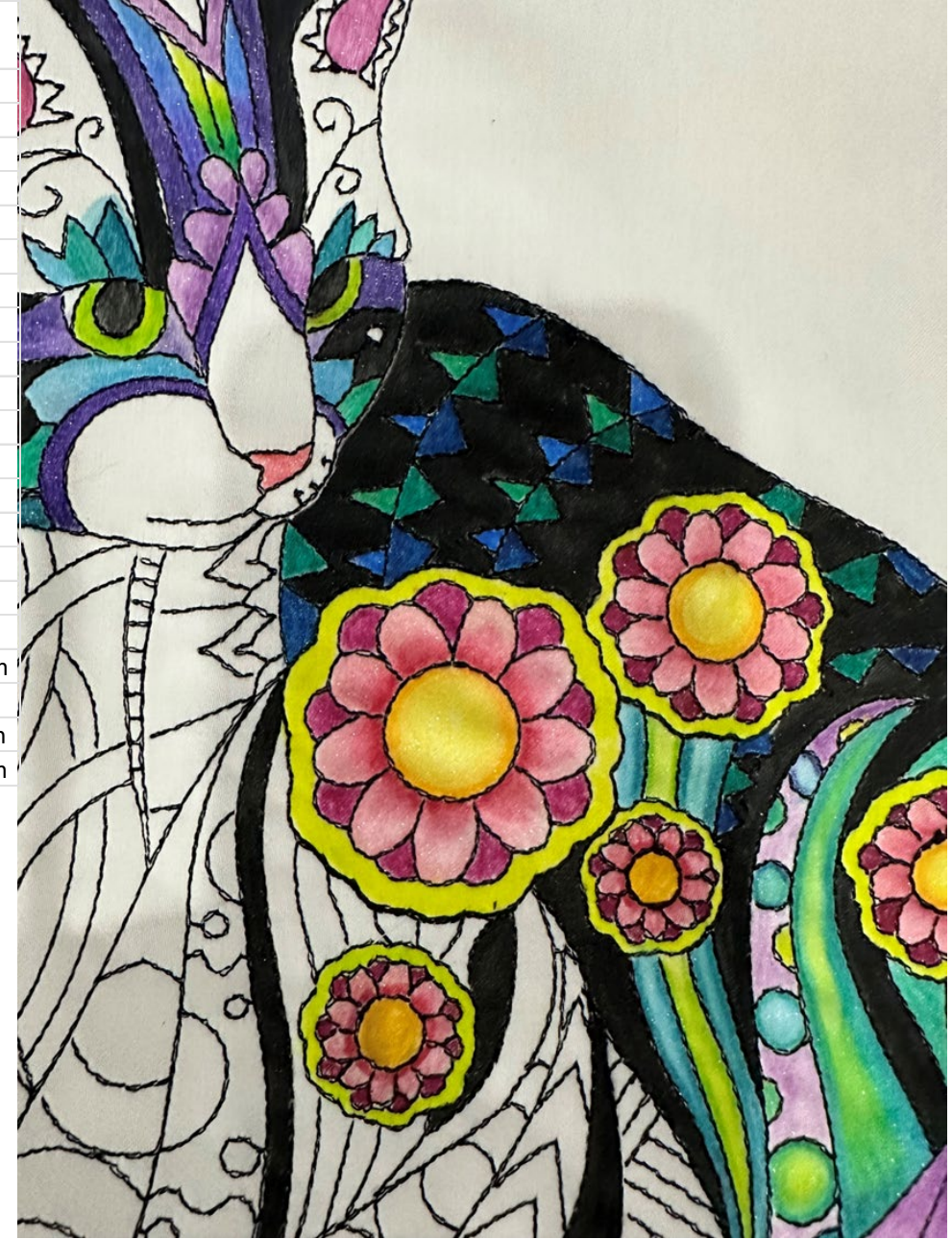
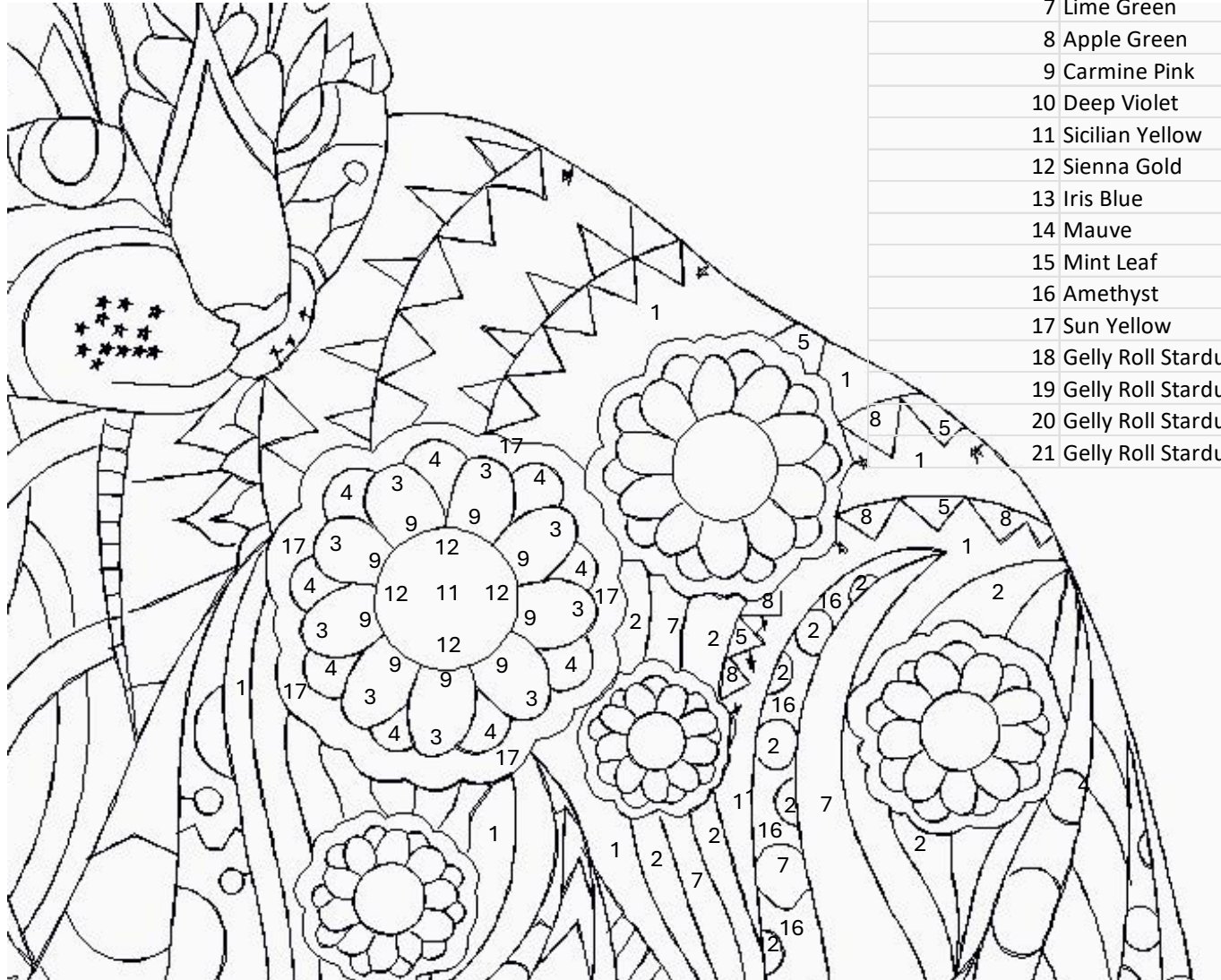
Each Daisy Flower is colored the same way so follow the numbers
In the large daisy for all of them.

Colors for Doodle

Cat

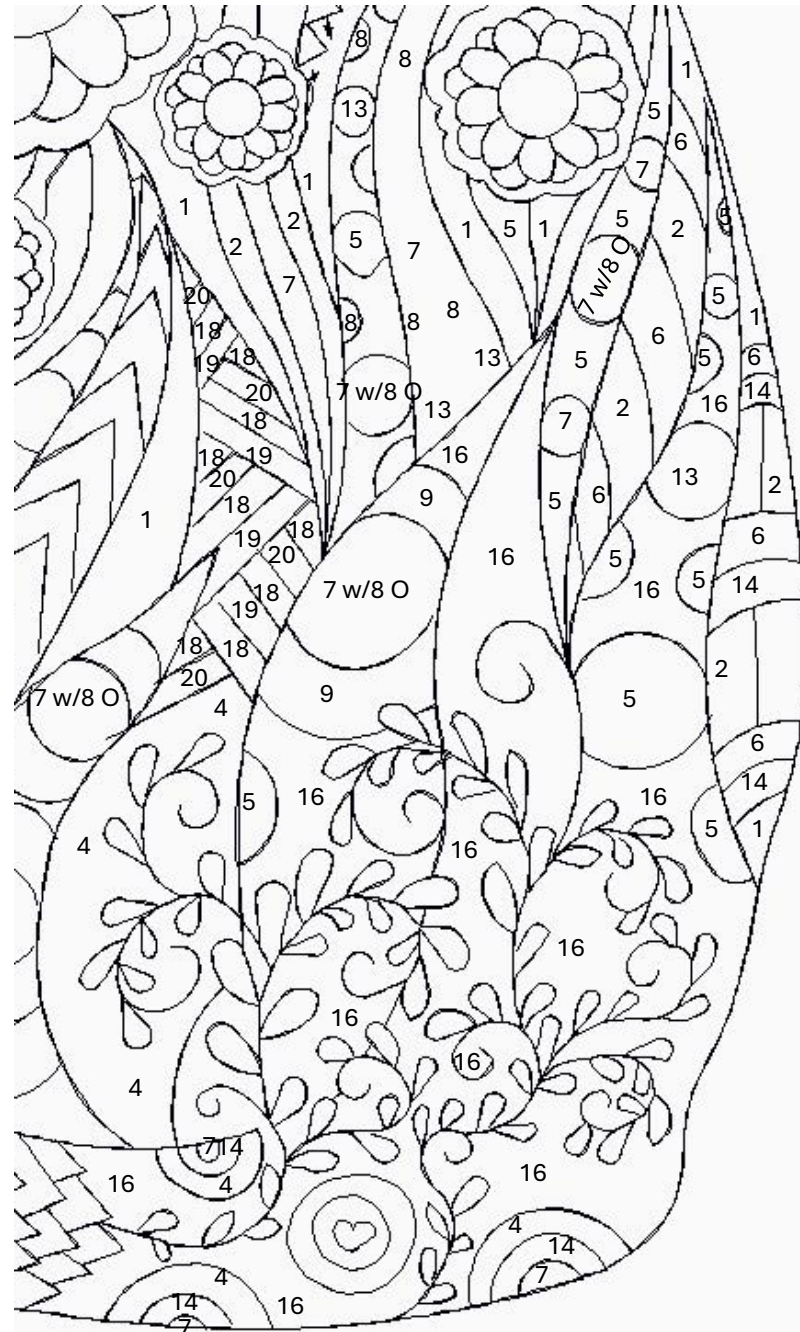
Inktense Pencils

- 1 Ink Black
- 2 Malibu (Blue)
- 3 Pink Flamingo
- 4 Sugar Plum
- 5 Sea Breeze
- 6 Cerulean Blue
- 7 Lime Green
- 8 Apple Green
- 9 Carmine Pink
- 10 Deep Violet
- 11 Sicilian Yellow
- 12 Sienna Gold
- 13 Iris Blue
- 14 Mauve
- 15 Mint Leaf
- 16 Amethyst
- 17 Sun Yellow
- 18 Gelly Roll Stardust Lt Blue Pen
- 19 Gelly Roll Stardust Blue Pen
- 20 Gelly Roll Stardust Purple Pen
- 21 Gelly Roll Stardust Yellow Pen



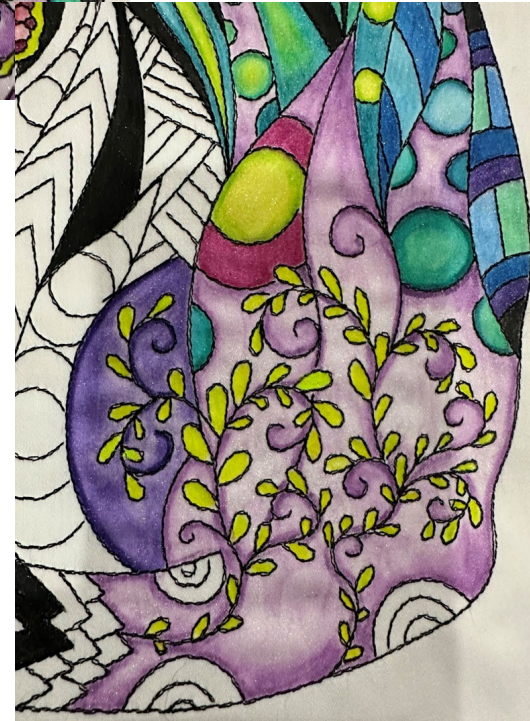
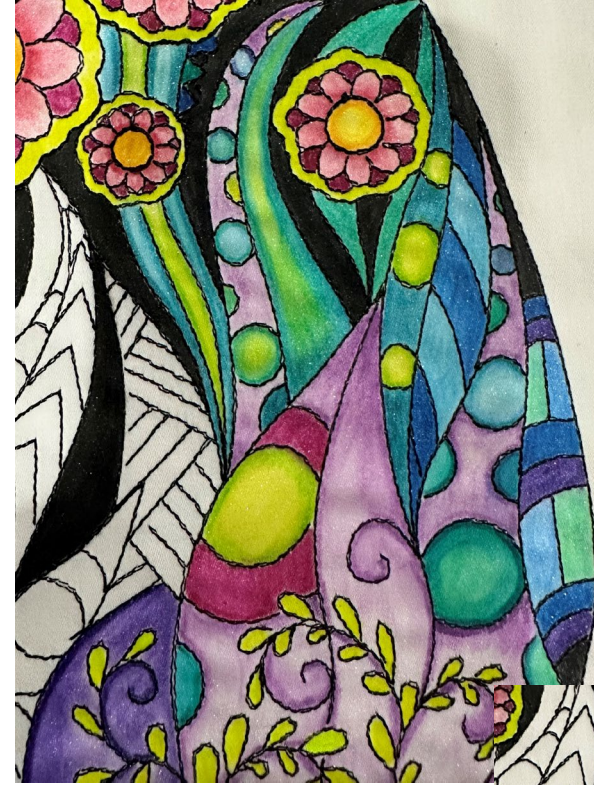
Colors for Doodle**Cat****Inktense Pencils**

- | | |
|----|---------------------------------|
| 1 | Ink Black |
| 2 | Malibu (Blue) |
| 3 | Pink Flamingo |
| 4 | Sugar Plum |
| 5 | Sea Breeze |
| 6 | Cerulean Blue |
| 7 | Lime Green |
| 8 | Apple Green |
| 9 | Carmine Pink |
| 10 | Deep Violet |
| 11 | Sicilian Yellow |
| 12 | Sienna Gold |
| 13 | Iris Blue |
| 14 | Mauve |
| 15 | Mint Leaf |
| 16 | Amethyst |
| 17 | Sun Yellow |
| 18 | Gelly Roll Stardust Lt Blue Pen |
| 19 | Gelly Roll Stardust Blue Pen |
| 20 | Gelly Roll Stardust Purple Pen |
| 21 | Gelly Roll Stardust Yellow Pen |



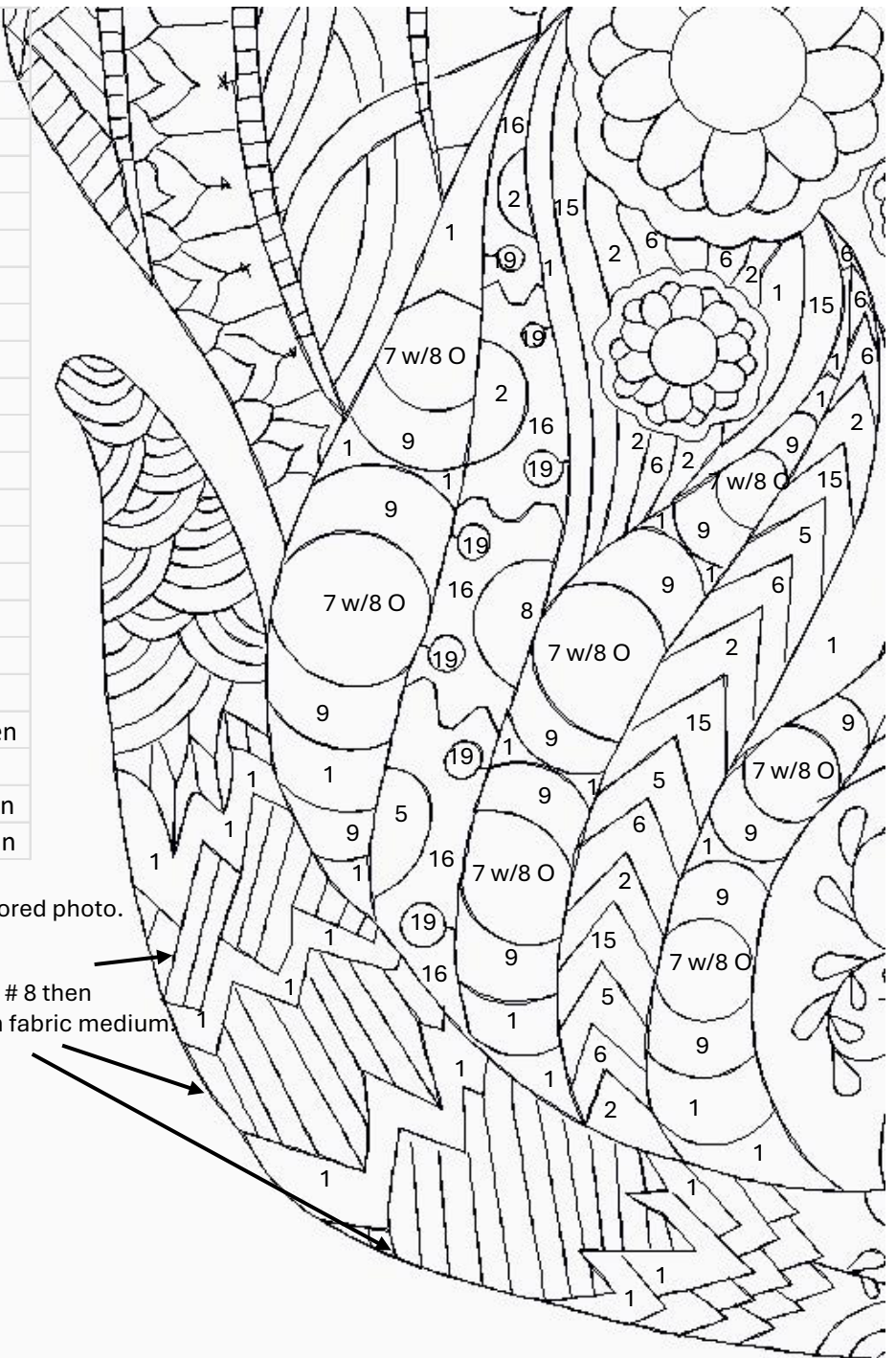
7 w/8 O: means color with #7 then
Use #8 around perimeter of circle

Use #7 for all the little leaves



Colors for Doodle Cat

Inktense Pencils	
1	Ink Black
2	Malibu (Blue)
3	Pink Flamingo
4	Sugar Plum
5	Sea Breeze
6	Cerulean Blue
7	Lime Green
8	Apple Green
9	Carmine Pink
10	Deep Violet
11	Sicilian Yellow
12	Sienna Gold
13	Iris Blue
14	Mauve
15	Mint Leaf
16	Amethyst
17	Sun Yellow
18	Gelly Roll Stardust Lt Blue Pen
19	Gelly Roll Stardust Blue Pen
20	Gelly Roll Stardust Purple Pen
21	Gelly Roll Stardust Yellow Pen



For tip of tail, alternate colors 18-21 as seen in colored photo.

For the vertical line areas in tail:
 Color the center area with #7, then around #7 use # 8 then #5 around perimeter of area. Blend all colors with fabric medium.