

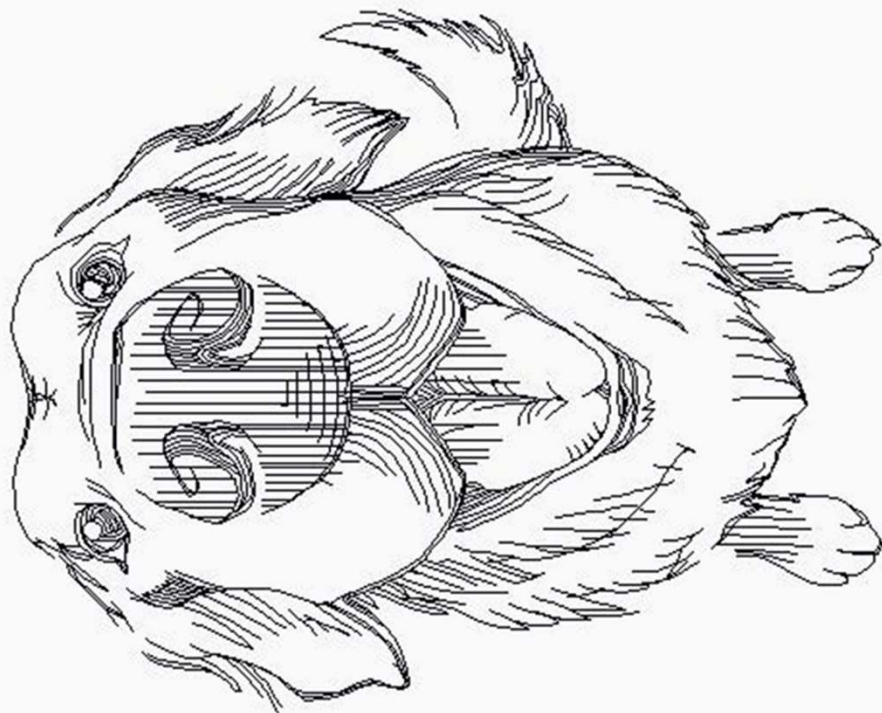
Colors Used:

Arteza Watercolor Pencils

- 1 a600 Lime Green
- 2 A507 Mykonos Blue
- 3 A501 Peacock Blue
- 4 A408 Lilac
- 5 A404 Fuchsia
- 6 A102 Jasmine Yellow
- 7 A109 Yellow Orche
- 8 A112 Pumpkin Orange
- 9 A405 Fruit Punch
- 10 A403 Flamingo Pink
- 11 A213 Garnet Red
- 12 A413 Eggplant Purple
- 13 A416 Amethyst Purple
- 14 A409 Lavender
- 15 A406 Plum Purple

*Love is a*

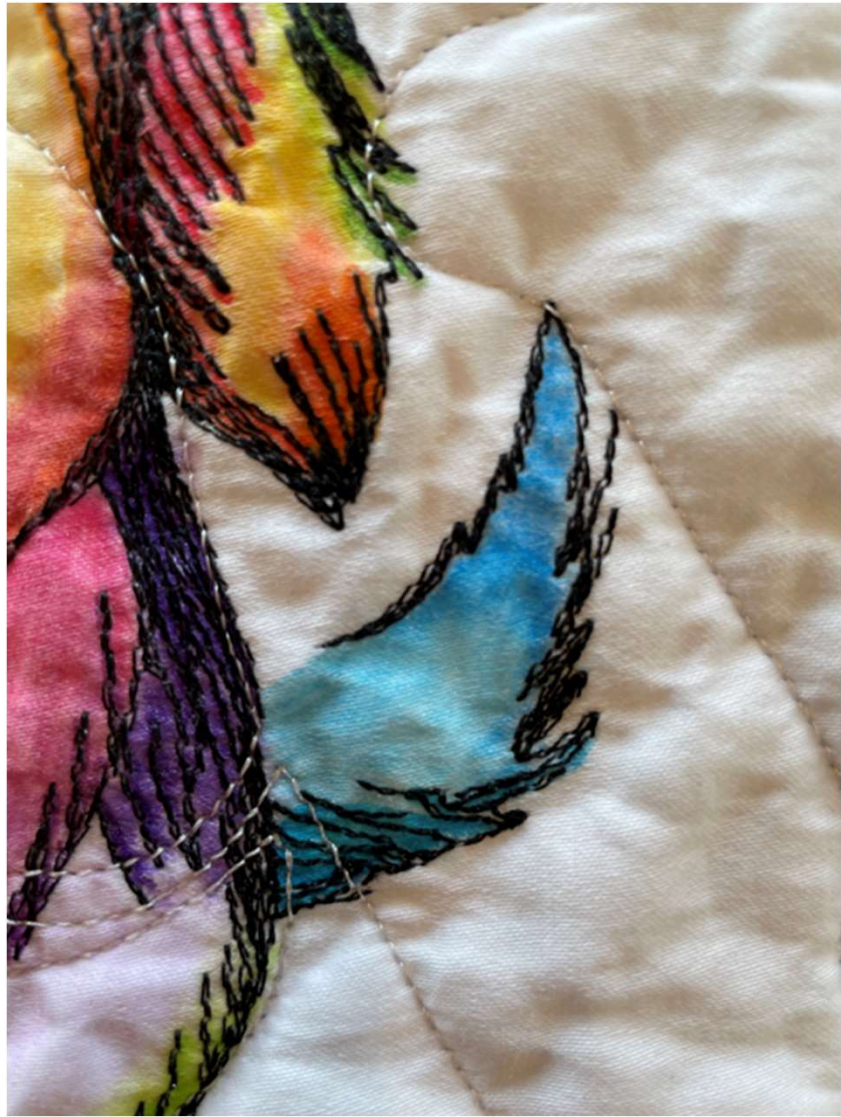
WET NOSE



*and a*

WAGGING TAIL





Colors Used:

Arteza Watercolor Pencils

- 1 a600 Lime Green
- 2 A507 Mykonos Blue
- 3 A501 Peacock Blue
- 4 A408 Lilac
- 5 A404 Fuchsia
- 6 A102 Jasmine Yellow
- 7 A109 Yellow Orche
- 8 A112 Pumpkin Orange
- 9 A405 Fruit Punch
- 10 A403 Flamingo Pink
- 11 A213 Garnet Red
- 12 A413 Eggplant Purple
- 13 A416 Amethyst Purple
- 14 A409 Lavender
- 15 A406 Plum Purple

The Key to making the coloring mesh well is to color very randomly but overlap the colors slightly as you apply them where the numbers indicate. Detailed colored Pictures have been provided for areas where the blending is critical.

