

AGZ Block 9 – The Rhino
Henna Rhino Block Coloring and Bling Kit Instructions



AGZ Block 9 – The Rhino

Recommended Coloring Materials: The Rhino can be done either with Inktense pencils or with Fabrico Fabric markers OR a combination of both. The instructions will be using a combo of both but will note when a substitute can be used. The following is a list of recommended colors in order corresponding to the photo next to it.

1. Inktense Green Aquamarine
2. Inktense Sea Blue
3. Inktense Tangerine
4. Inktense Deep Rose
5. Inktense Fuchsia
6. Inktense Shiraz
7. Inktense Sun Yellow
8. Inktense Beech Green
9. Inktense Apple Green
10. Fabrico Tropical Lagoon
11. Fabrico Pale Aqua
12. Fabrico Tangerine
13. Fabrico Bubbegum Pink
14. Fabrico Garnet
15. Fabrico Burgandy
16. Fabrico Lemon Yellow
17. Fabrico Pea Pod
18. Fabrico Kiwi

Other items used are plain fabric medium, a paint palette and Golden Taklon brushes



NOTE: WHEN USING LIGHT COLORS NEXT TO DARK COLORS, ALLOW THE LIGHT COLORING TO DRY FOR FIVE-TEN MINUTES BEFORE COLORING WITH DARKER COLOR. THIS WILL PREVENT BLEEDING!!!

Use the Black and White Version of each Rhino section attached to test colors first and to set up a color code chart before coloring on sampler. In the case of the Rhino you may want to make several copies of the black and white version and color it several times to determine the best color combo for you.

Bling Kit – the bling kit for the Rhino is rather large (of the Animals Gone Zen series) and contains many SS6 and SS8 sized stones (sort of hard to see due to their small size). You may want a pair of magnifiers for placing these stones! The Rhino design has been broken down into sections and labeled carefully with names of stones, the stone size and the number of stones used in each band.

Bling Kit (all the stones necessary to bling according to the photo included in kit. Please note that there are just a few extra stones of each color so be careful when handling the rhinestones).

AGZ Block 9 – The Rhino

Iron or Mini Iron. The best way to attach most of these stones is with a mini iron preferably one that has a rhinestone tip. A regular iron can be used but may prove to be cumbersome when setting the very smallest stones. **IN ORDER TO PREVENT SCORCHING YOUR FABRIC USE A PRESS CLOTH!!!!**

Pair of tweezers for placing the stones. Any tweezer will do but I find that embroidery tweezers or medical supply tweezers at least 4.5" long work the best. Some 'Blingers" like a pickup tool that has a sticky end to pick up the stone and a small awl to help put the stone down in the correct location. You can find this type of tool at any hobby shop that carries rhinestones.

Roxanne's Baste it with the small nozzle for precise glue placement. Although the stones are all hot fix (meaning that the glue on the stone is activated by heat), I found it somewhat easier to put a spot of Roxanne's Baste it glue down, place the stone on the glue then let the glue dry (for about 5 minutes). Then hit the stone with your iron or mini iron. The Baste it glue holds the stone exactly where you want so you can place the iron on it without worry of the stone shifting under the iron.

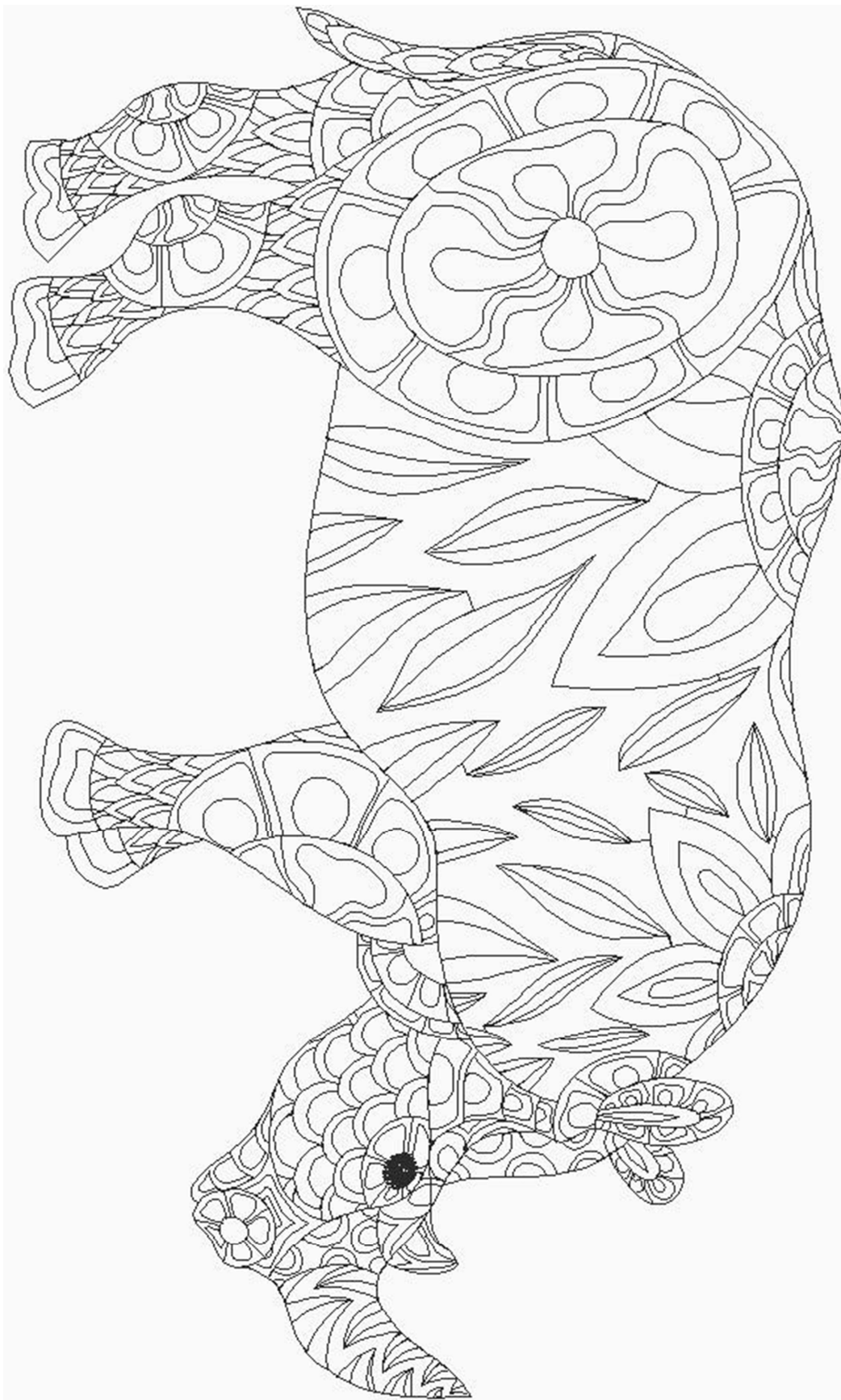
There is no particular step by step process other than it is easier to color first then place the stones. Always place your smaller stones first then the larger stones so that the iron can touch the surface completely. Make sure to heat set the coloring first before placing stones. The photo included should be the best guide for coloring as well as where exactly to place stones. However, there are detailed diagrams of each part of the design labeled with number associated with a particular stone and pencil for coloring. Please see the Excel spreadsheet printout for the rhinestone name, the size and the color code for each stone. I have also provided a close count of how many stones are used throughout the process.

If you are having difficulty setting the stones (i.e., they don't seem to stick once heat activated) you may want to refer to the VERY DETAILED instructions provided by the following link:

https://www.harmanbeads.com/assets/images/PDFs/Product%20Information/Application%20Manual/2017/SP_Application_2017_hotfix.pdf

Finally, you can contact me via email at: medinadomarts@aol.com for any questions or if you need additional rhinestones to complete your work of art!

Enjoy! Michele Markey Medina Domestic Arts Studio LLC



AGZ Block 9 – The Rhino

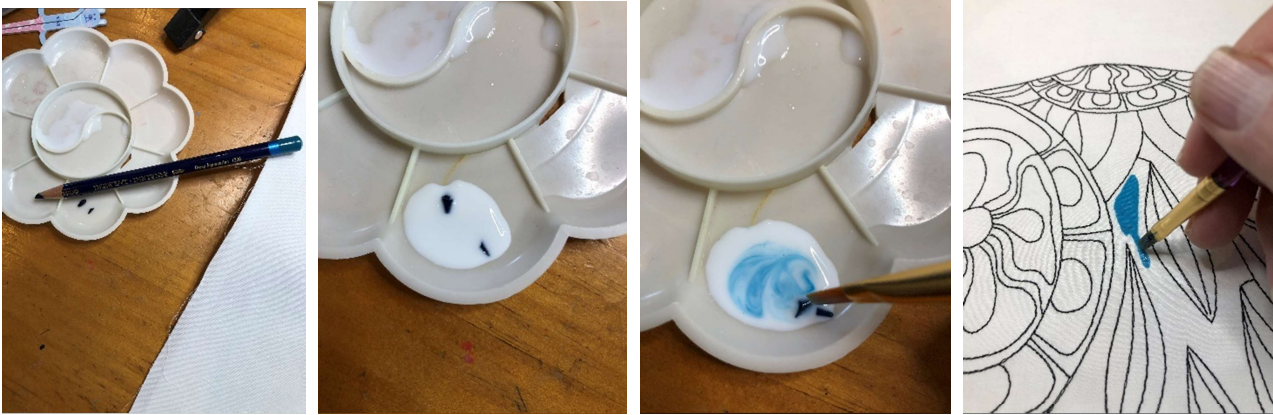
	SS10 Hyacinth	SS6 Capri Blue	SS8 Aqua	SS12 Jonquil	SS30 Sun	SS08 Burgandy	SS10 Lemon	SS10 Jonquil	SS6 Hyacinth	
Stones for Rhino										
Color Code	1	2	3	4	5	6	7	8	9	
Rear Back Flower:										
center	11	90								
Small Petals			16	5						
Large Petals	10				1	120				
Back Front Leg Flower:										
Center	10	500	51	6	4					
In Leaf Shapes on Leg							20			
Back Front Leg Knee Flower	3	30	9	2		16				
Back Leg Flower:	3	25	6	2						
Back Leg Knee:	3	25	6	2			14			
Tail:							5			
Belly Leaves							75			
Shoulder Flower:	3	20		44						
Large Petals	7					65				
Head:										
Ears								10		
Forehead and Flower Below Ears				6						
Face				33						
Eyes									16	
Horns		40					15			
Chin		13		3					5	
Neck				3					6	
Front Legs	9	90	25	4		22	15			
Total	59	833	113	110	5	223	144	10	27	1524

AGZ Block 9 – The Rhino

Coloring Techniques used on the Rhino

The focus of the Rhino is to practice making tinted fabric medium and using fabric medium as a means to blend fabric markers. The following are step by step instructions on how to do these processes. When the instructions call for each, please refer back to this section for how-to-do steps.

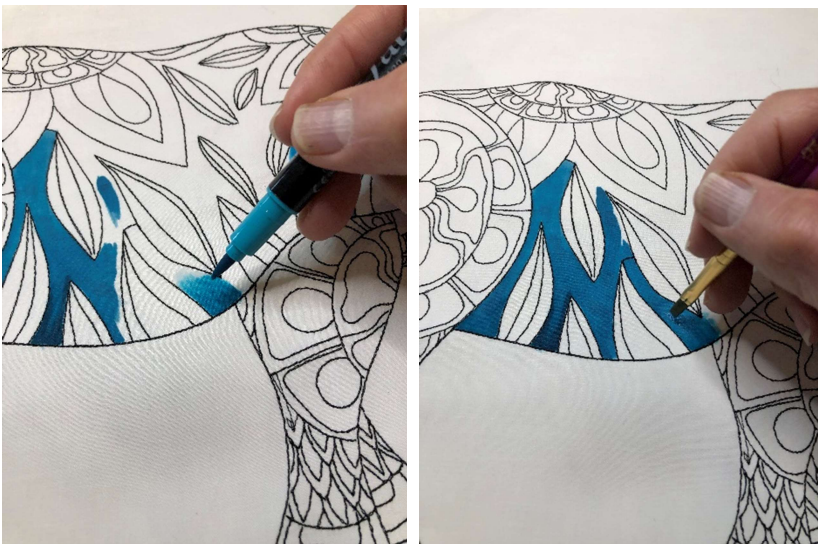
Tinted Fabric Medium using Inktense Pencils



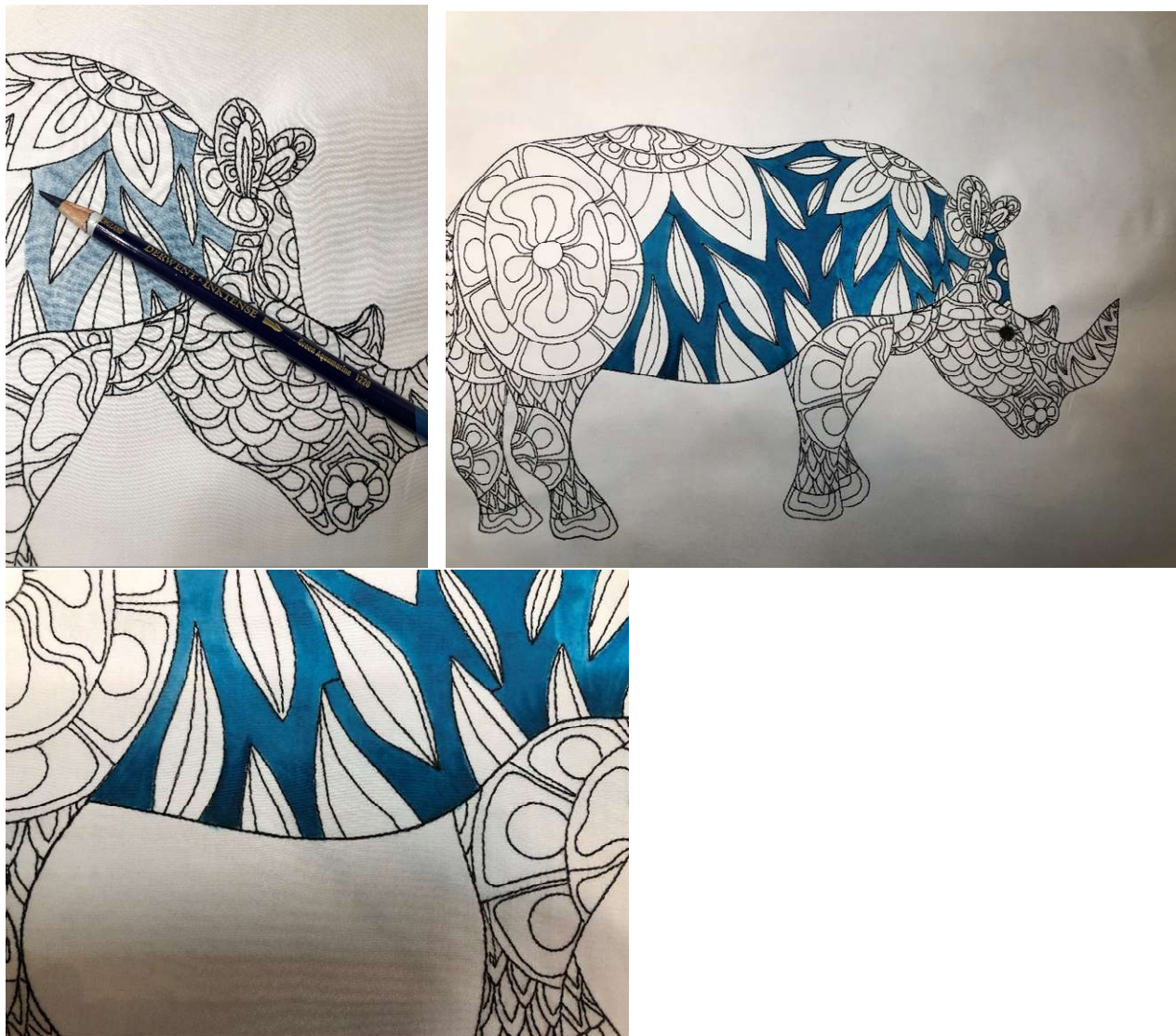
Sharpen pencil to a fine point. Break off part of the point and place it in the paint palette. Pour about a quarter sized drop of fabric medium directly on the broken tip. Swirl the tip and the fabric medium around until the fabric medium is colored. As you use the tinted fabric medium, you can pour more in the palette as long as there is a piece of pencil tip in the palette to mix with the medium. Brush directly onto the fabric with this mixture. Use additional plain fabric medium to blend any streaking.

Using Fabric medium to lighten and blend fabric markers

Coat the area to be colored with fabric medium liberally. Begin to color immediately with fabric marker then use brush to blend. Work in small areas as the fabric markers tend to dry quickly, even with the fabric medium. In the example below, you can tell that the fabric medium is already on the fabric due to the very light coloring right above the pen. Use additional fabric medium to help blend the colors together. You can go back over the area with fabric marker to deepen the color (see the darken area at the bottom).



Instructions for coloring Rhino Body



Coloring: Using the Green Aquamarine Intense pencil, color the entire background of the Rhino's body then brush fabric medium over the pencil to blend and set color.

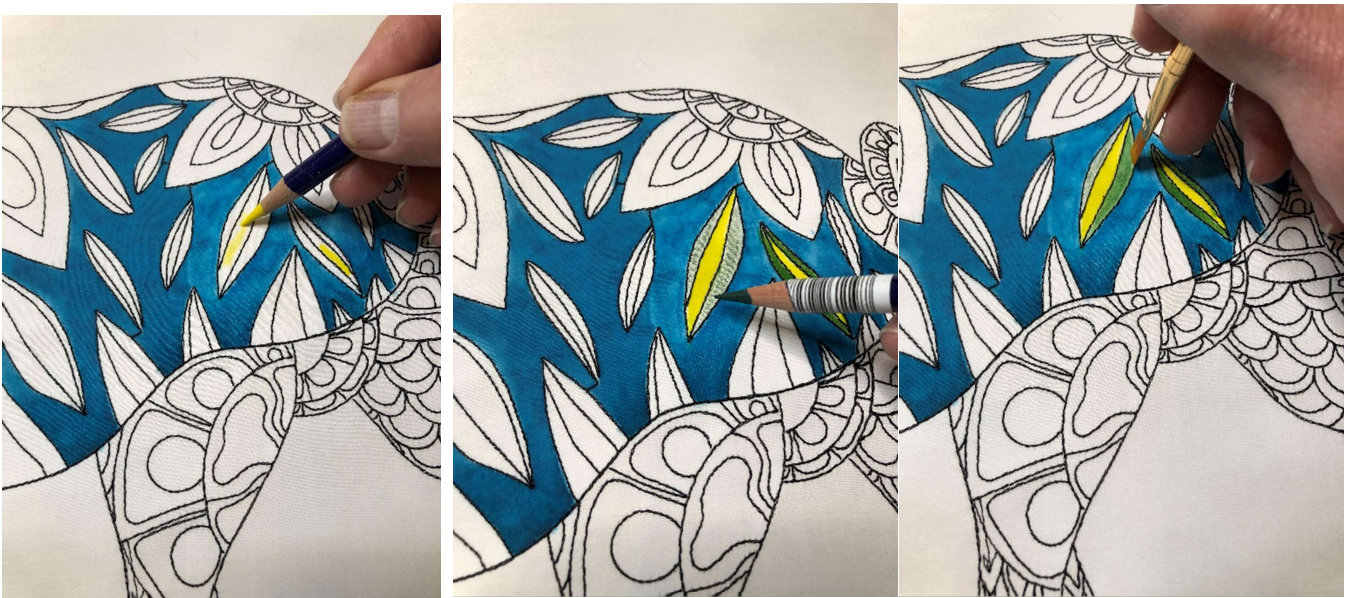
ALTERNATIVE COLOR METHOD: break off a piece of Green Aquamarine and use Tinted Fabric Medium process to create "paint". Color entire background with tinted fabric medium.

SECOND ALTERNATIVE COLOR METHOD: Brush on fabric medium in small sections then color over with Fabrico Tropical Lagoon.

AGZ Block 9 – The Rhino
Rhino Leaves on Body

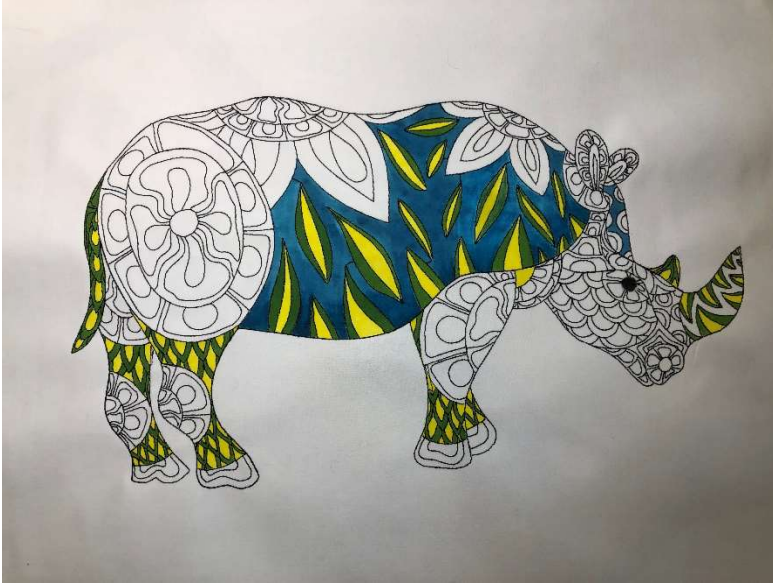


Method 1: use Fabrico marker Lemon Yellow to color centers of leaves. Use Fabrico Marker Pea Pod to color the two outer sections of the leaves.



Method 2: Color the center with Inktense Sun Yellow pencil. Color two outer sections with Inktense Beech Green. Coat both colors with fabric medium.

AGZ Block 9 – The Rhino
Rhino Legs, Tail and Horn



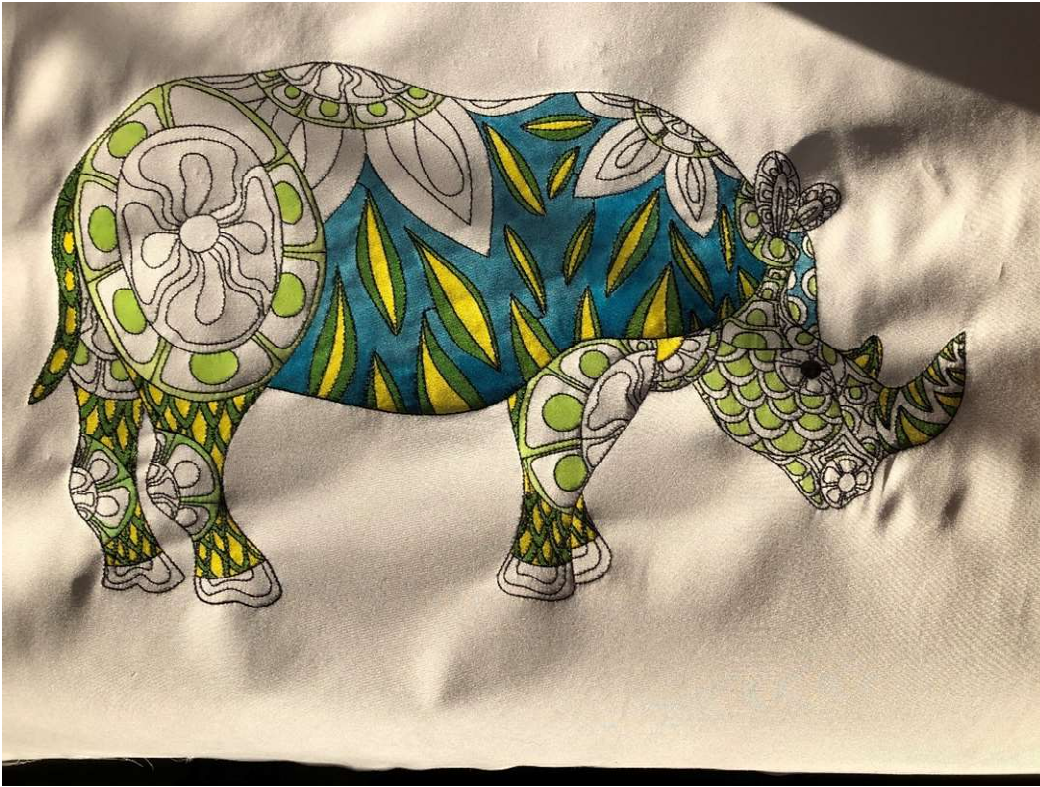
Continue coloring the centers of the diamond-shaped patterns on legs with Yellow; and the outer sections with Green. Color tail and horn as in picture above.

Coloring the Outer borders of the Flower Pattern on Hip, Below Tail Back Leg Knee Joints, Top of Back (both Flowers), Flower on Front of Chest

The Flowers are all basically colored the same way. However, you can choose to either use the Fabric Medium/Fabric Marker Combo using Fabrico pen Kiwi or Tinted Fabric Medium Method using Inktense Apple Green. The first example is using the Kiwi pen with fabric medium. The small outer band is best done with the Fabric marker/fabric medium combo while the other green areas are best done with the Tinted Fabric Medium Method. IN the pictures below the knees were done with the Fabrico pen and the big hip flower was done with Tinted Fabric Medium.



AGZ Block 9 – The Rhino



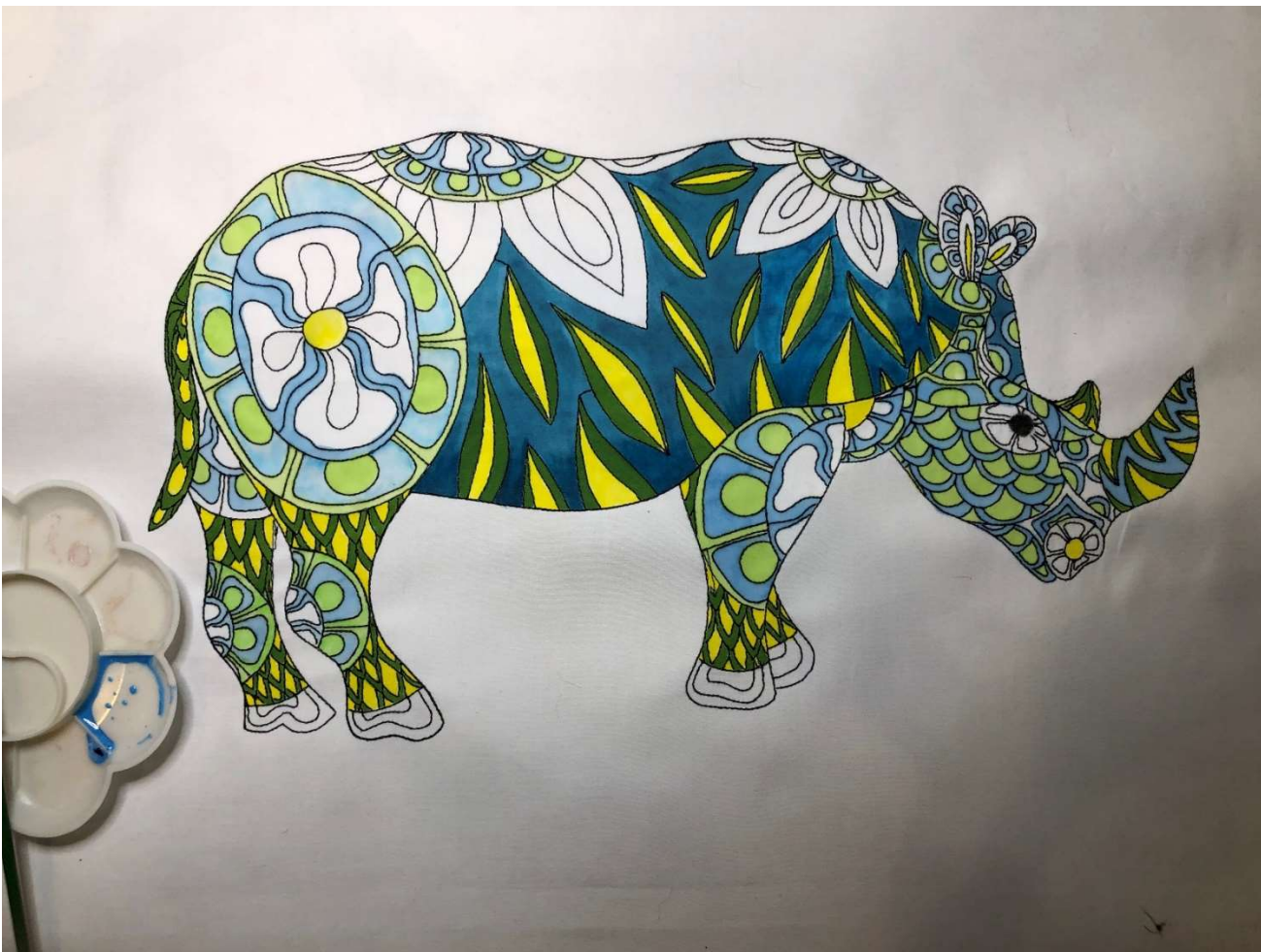
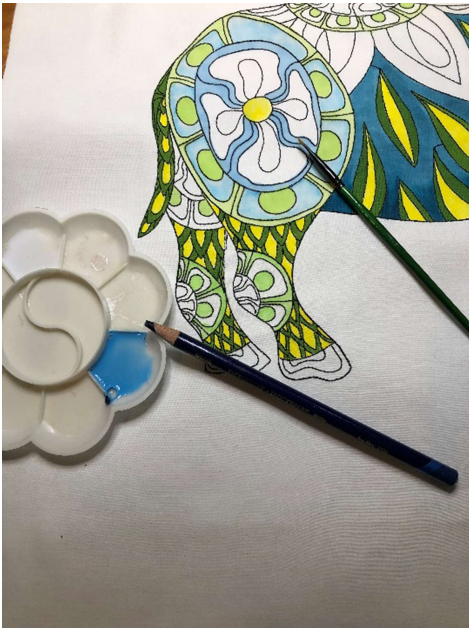
Once the outer edges of all the Flowers are done, color the centers of the outer Petals in Green then color the inner Scallop areas on the face in Green.

Coloring the Outer Petals and the Inner Petal Edges; Outer Scallop Bands on Face; ZigZag Pattern on Horn

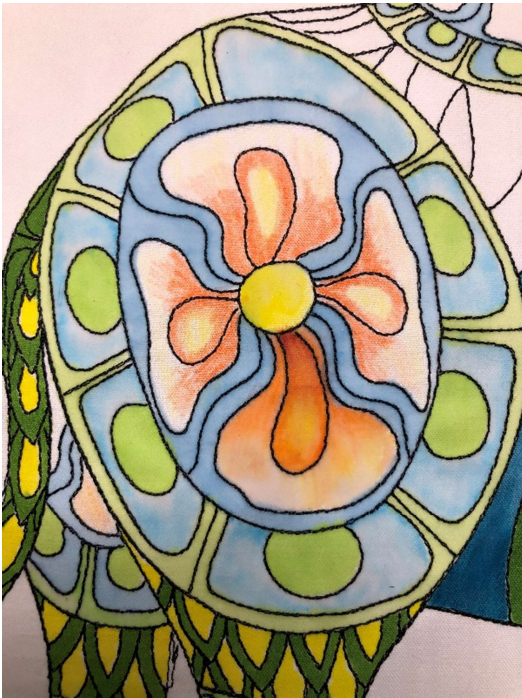


Pictures above represent the Fabric Marker Method using Fabriano Pale Aqua and fabric medium. This method was the one I used for the large flower on the hip. However, for the remaining blue areas, I made Tinted fabric medium with InkTense Sea Blue. (see next two pictures for all areas to colored Blue).

AGZ Block 9 – The Rhino



AGZ Block 9 – The Rhino



The Centers of all the Flower are either Fabrico Lemon Yellow or Inktense Sun Yellow. The inner Petal centers are colored either with the Fabric Medium and Fabrico Pen Method with Lemon Yellow in the very center and Tangerine around the center then blended with fabric medium. OR

Color the center with Inktense Sun Yellow and color around the yellow with Inktense Tangerine. Blend with fabric medium starting with the outer edges and work towards the center.

Color the outer part of the Inner Petal lightly all over with Inktense Sun Yellow then overcolor very lightly at the outer edges with Tangerine then coloring deeper with Tangerine towards the center. Blend with fabric medium starting with the outer edges and work towards the center.



Color the outer edges of the Ears and around the base of the Horn and Chin using Fabrico Tropical Lagoon.

ALTERNATIVE: you can color the same area with Inktense Green Aquamarine. Then coat with fabric medium.



The next section of coloring is the two big flowers's outer petals on the back of the Rhino. Although you can try to do the Fabric Medium/Fabric Pen combo to color these petals; I found that pencils work better in this situation. I have colored these as one would normally color: color first then apply fabric medium. However, I believe that the Tinted Fabric Medium Method would also work very well in this instance. You, as the colorist, can decide how you would best color this on your block. If you do decide to use the tinted fabric medium method, you can deepen the colors with the pencil once you have laid down the tinted fabric medium onto the fabric.

Starting in the center, color with Inktense Sun Yellow and Tangerine as colored earlier. The next band color with Deep Rose lightly then over color with Fuchsia deepening the color towards the center. The last band color lightly with Fuchsia then over color with Shiraz deepening the color towards the center. When applying the fabric medium, work from the lighter edges back towards the center.



AGZ Block 9 – The Rhino



Almost done! Color the Rhino's hooves with the three Fabrico pinks: Bubblegum Pink in the Center; Garnet in the second band and Burgandy in the final outer band.

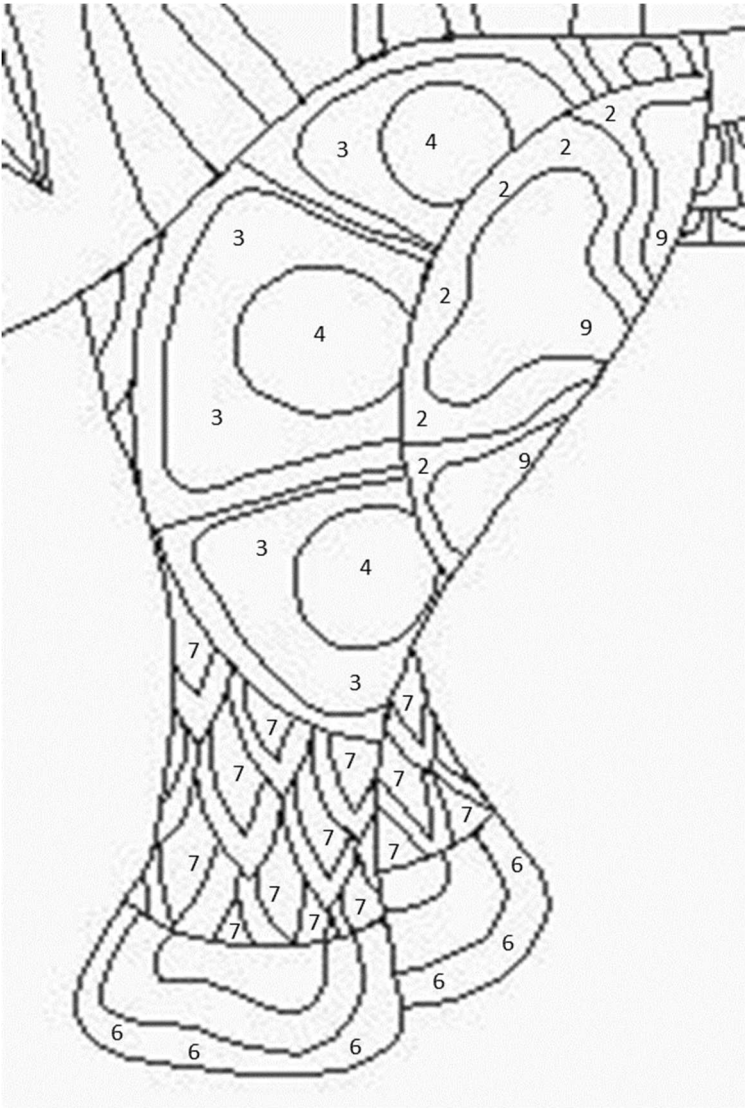


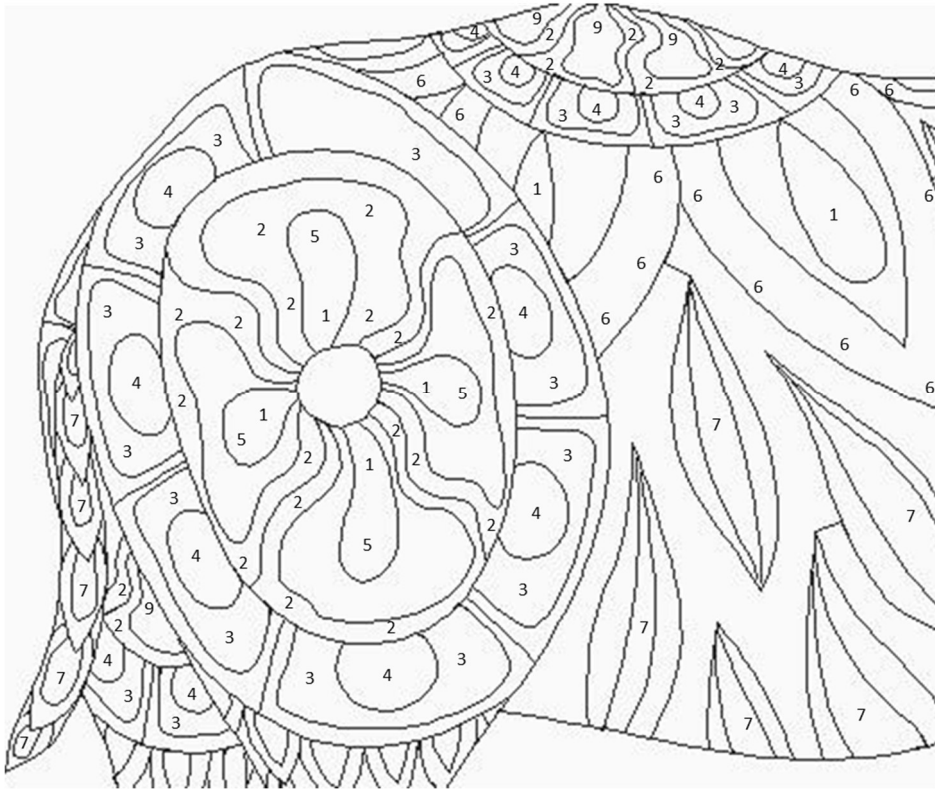
Bling Placement (Each picture has numbers associated with the Excel spreadsheet and the numbered bags from the Rhino Kit)



AGZ Block 9 – The Rhino







AGZ Block 9 – The Rhino

