

Butterfly with Flowers Block Coloring and Bling Kit Instructions



## Recommended Coloring Materials:



1. Lt Orange Pastel
2. Neon Orange Pastel
3. Apricot Pastel
4. Pink Pastel
5. Fuchsia Pastel
6. Violet Pastel
7. Purple Pastel
8. Lime Pastel
9. Lt. Green Pastel
10. Pale Yellow Pastel
11. Dark Gold Glitter
12. Copper Glitter
13. Gold Glitter
14. Green Stardust #727
15. Dk Pink Stardust #721
16. Pink Stardust #720
17. Purple Stardust #724
18. Orange Stardust #705
19. Clear Stardust #700
20. Silver Stardust #744
21. Black Metallic #549

The Butterfly is colored exclusively with gel pens. The following is a list of recommended colors in the order above. Please note that the Kaisercraft gel pens that I used do not have any kind of name associated with the color of pen. I made up my own names since I use these pens frequently in my kits. The other pens are made by Sakura under the label Gelly Roll. The sparkly ones are called Stardust and the duller metal ones are Metallic. To see the number associated with the pen you have to look closely at the super fine print. The name is listed but the number you need is the one following the # sign. (See picture example below.)

Also, where noted, I used fabric markers as highlighters. Some of the greens had highlights from Fabrico Pea Pod and Pine. These are medium and dark green pens. They are not necessary but if you have fabric markers that are medium to dark green, you can use them as instructed in the instructions.

Each number corresponds to the numbers in the diagrams throughout the instructions. If you see numbers in this manner: 4/5/15 in means that you will color number 4 (Pink Pastel) first, then overcolor with color number 5 (fuchsia Pastel) then color with number 15 (Dk Pink Stardust). Colors should be blended well. You can overcolor with all the colors once the base has been put down to get deeper colors.



Finally, there is a video on the website [www.medinadomarts.com](http://www.medinadomarts.com) under How To Videos – Blending with Gel Pens. This video was made while coloring this block so you should get ideas on coloring from it.



The Butterfly is relatively easy to color because of its size.

Use the Black and White Version attached to test colors first and to set up a color code chart before coloring on sampler.

Bling Kit –

Bling Kit (all the stones necessary to bling according to the photo included in kit. Please note that there are just a few extra stones of each color so be careful when handling the rhinestones).

Iron or Mini Iron. The best way to attach most of these stones is with a mini iron preferably one that has a rhinestone tip. A regular iron can be used but may prove to be cumbersome when setting the very smallest stones.

Pair of tweezers for placing the stones. Any tweezer will do but I find that embroidery tweezers or medical supply tweezers at least 4.5” long work the best.

Roxanne’s Baste it with the small nozzle for precise glue placement. Although the stones are all hot fix (meaning that the glue on the stone is activated by heat), I found it somewhat easier to put a spot of Roxanne’s Baste it glue down, place the stone on the glue then let the glue dry (for about 5 minutes). Then hit the stone with your iron or mini iron. The Baste it glue holds the stone exactly where you want so you can place the iron on it without worry of the stone shifting under the iron.

There is no particular step by step process other than it is easier to color first then place the stones. Make sure to heat set the coloring first before placing stones. The photo included should be the best guide for coloring as well as where exactly to place stones. However, there are detailed diagrams of each part of the design labeled with number associated with a particular stone. Please see the Excel spreadsheet printout for the rhinestone name, the size and the color code for each stone. I have also provided a close count of how many stones are used throughout the process.

If you are having difficulty setting the stones (i.e., they don’t seem to stick once heat activated) you may want to refer to the VERY DETAILED instructions provided by the following link:

[https://www.harmanbeads.com/assets/images/PDFs/Product%20Information/Application%20Manual/2017/SP\\_Application\\_2017\\_hotfix.pdf](https://www.harmanbeads.com/assets/images/PDFs/Product%20Information/Application%20Manual/2017/SP_Application_2017_hotfix.pdf)

Finally, you can contact me via email at: [medinadomarts@aol.com](mailto:medinadomarts@aol.com) for any questions or if you need additional rhinestones to complete your work of art!

Enjoy!

Michele Markey

Medina Domestic Arts Studio LLC

**Blank Design for testing colors**







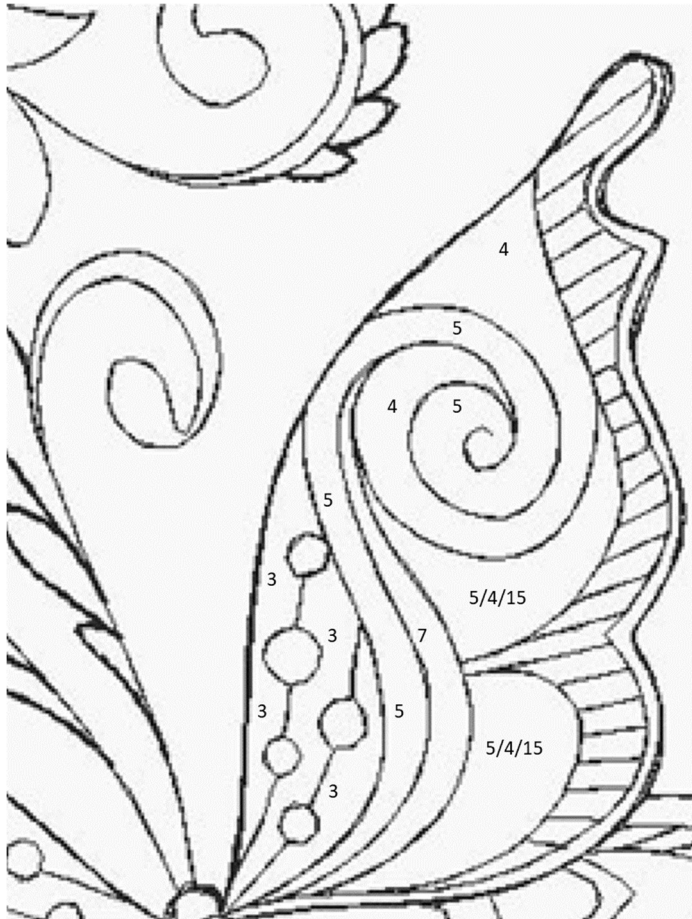
If the diagram has a number with another number next to it with a slash in between, the first color should be colored first and the second numbered color overlaid on top of the first color.







If the diagram has a number with another number next to it with a slash in between, the first color should be colored first and the second numbered color overlaid on top of the first color. Continue the same process with additional colors if listed. For the wings, repeat the same colors on both sides of wings in the same locations.

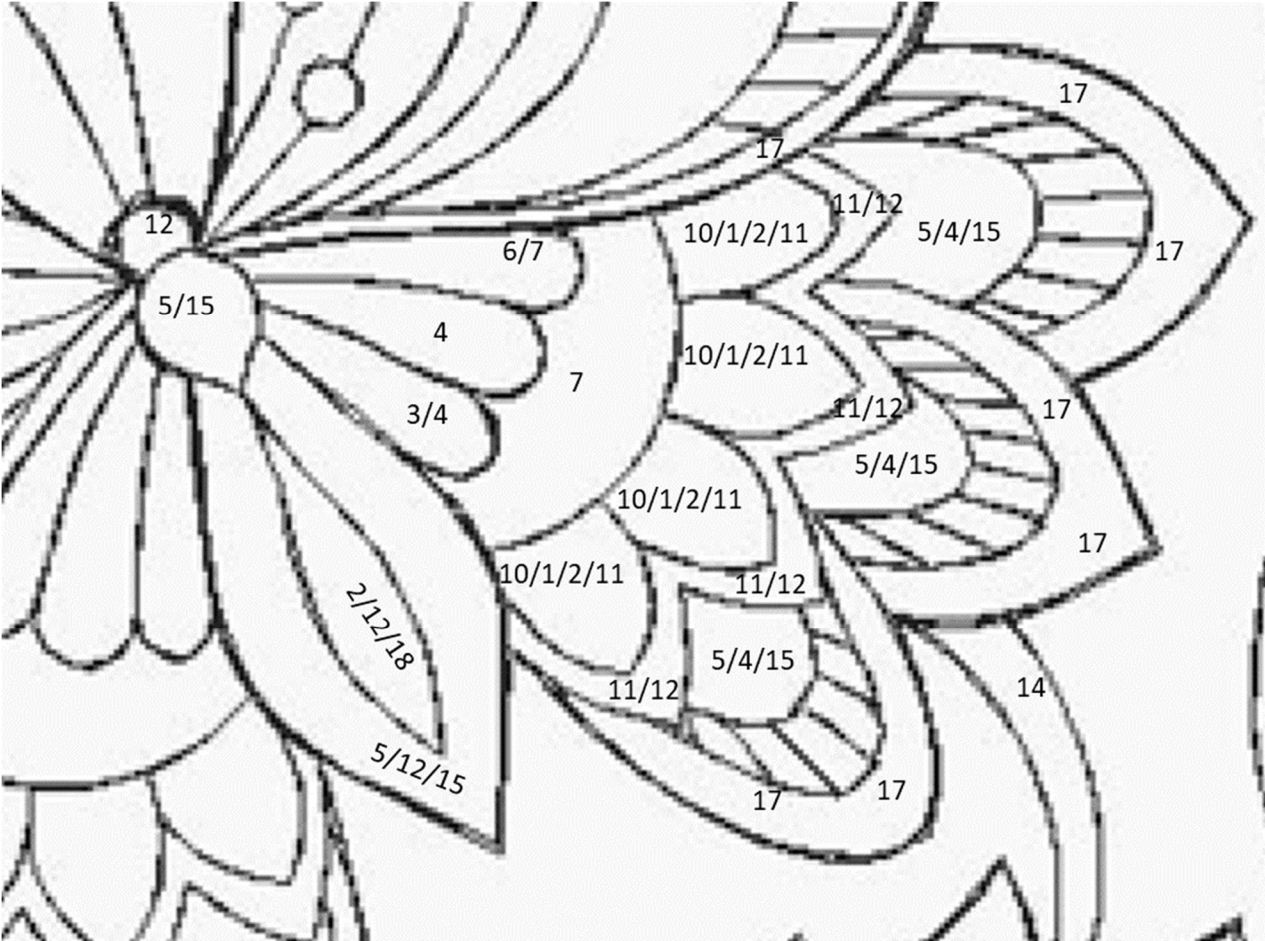




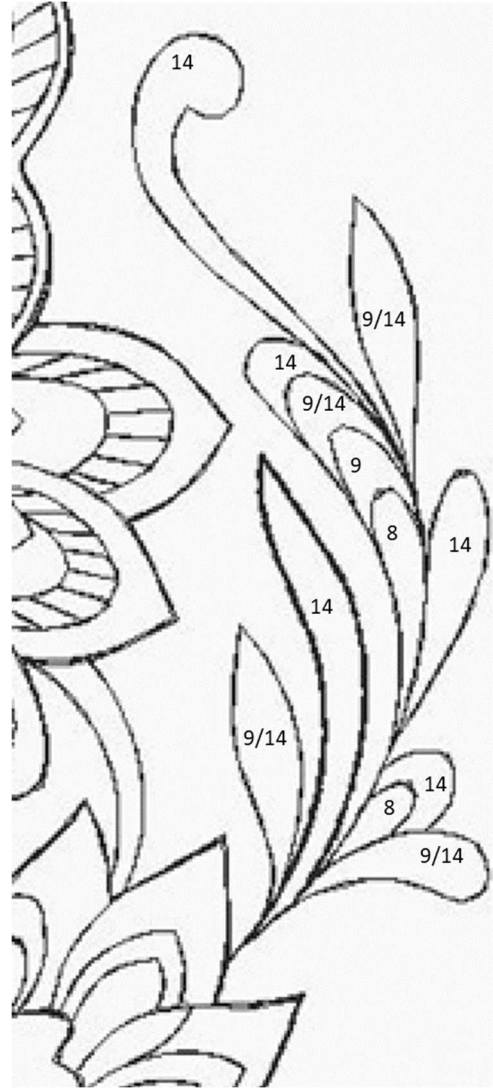


If the diagram has a number with another number next to it with a slash in between, the first color should be colored first and the second numbered color overlaid on top of the first color. Continue the same process with additional colors if listed. For the wings, repeat the same colors on both sides of wings in the same locations.

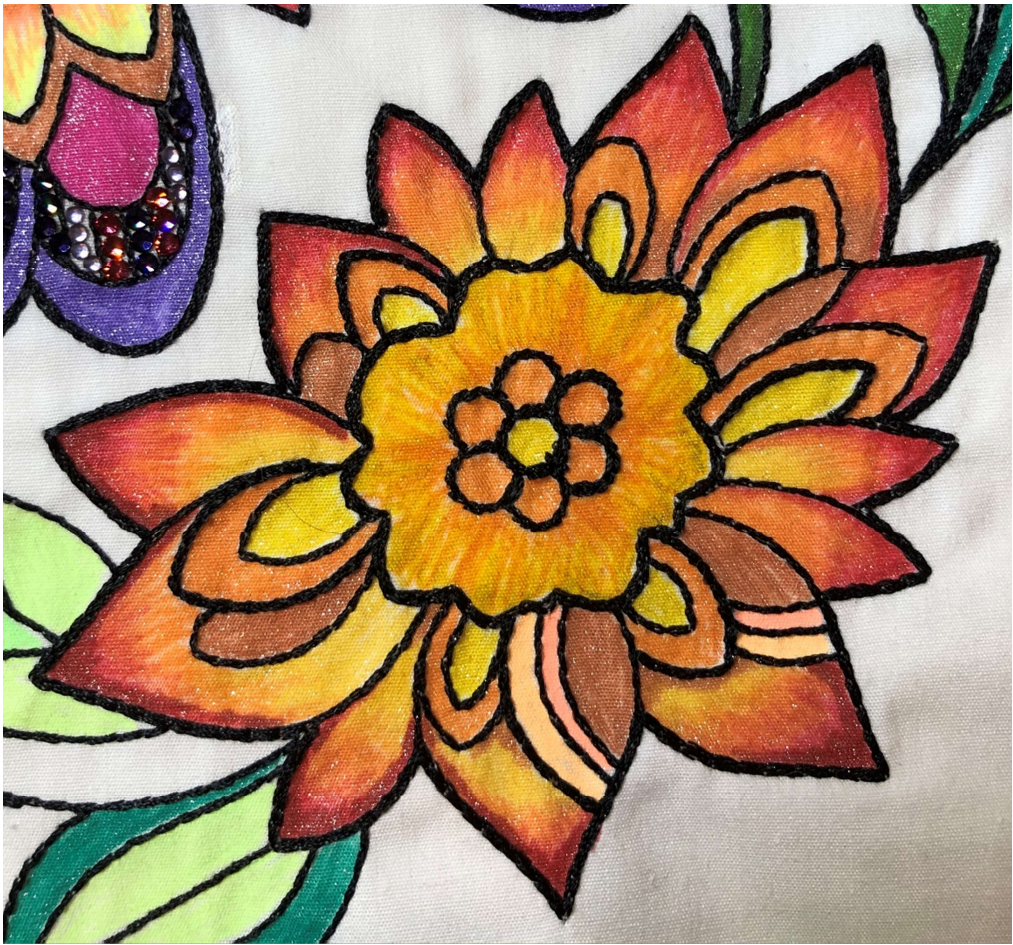
For the yellow centers, lay the first color down in the entire area, then over lay in shorter strokes, leaving the last color exposed at the top. Please see picture for exact coloring.



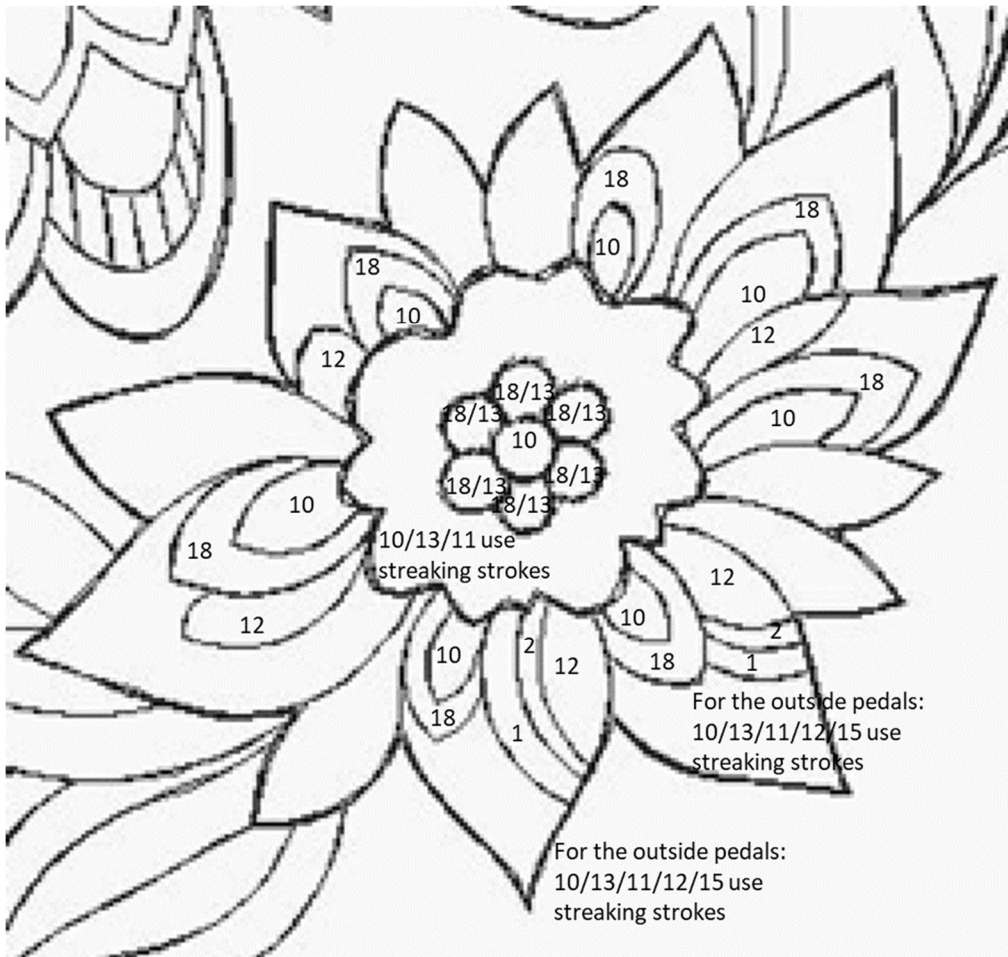




NOTE: Since the small areas filled with bling are not colored; if you choose not to use bling my suggestion would be to alternate the entire spectrum of colors in each of the small rectangles.







10/13/11 use  
streaking strokes

For the outside pedals:  
10/13/11/12/15 use  
streaking strokes

For the outside pedals:  
10/13/11/12/15 use  
streaking strokes

