

Peacock Block Coloring and Bling Kit Instructions



Recommended Coloring Materials:

The Peacock is colored with Inktense pencils, gel pens and watercolor paint. The following is a list of recommended colors with alternate choices in other pencil brands. Please note that the alternates are close but are not exact to the Inktense pencils used:

Inktense Pencils	Goldfarber Aqua Pencils	Prismacolor Pencils
Peacock Blue	HelioBlue 151	PC1100
Lagoon	Cobalt Blue 143	PC902
Dark Aquamarine	Bluish Turquoise 149	PC903
Green Aquamarine	Cobalt Turquoise 153	PC905
Felt Green	Permanent Green 266	PC909
Cadmium Yellow	Cadmium Yellow 107	PC916



If you choose to use a substitute pencil, follow the coding for Inktense pencils and pick your alternate according to the list above. If you have purchased the Cockatoo kit, please use the Sun Yellow pencil from that kit for the Yellow coloring in this kit.

Gelly Roll Stardust Pens: Purple, Marine

Two (2) ounce bottle of Pearlescent Fabric Medium

Paint Brush Set

Paint Palette

OPTIONAL Pentel Sparkle Pens: Purple/Blue

The Peacock is relatively easy to color because of its size. The attached color chart will list what colors go where in the design.

Use the Black and White Version attached to test colors first and to set up a color code chart before coloring on sampler.

Bling Kit –

Bling Kit (all the stones necessary to bling according to the photo included in kit. Please note that there are just a few extra stones of each color so be careful when handling the rhinestones).

Iron or Mini Iron. The best way to attach most of these stones is with a mini iron preferably one that has a rhinestone tip. A regular iron can be used but may prove to be cumbersome when setting the very smallest stones.

Pair of tweezers for placing the stones. Any tweezer will do but I find that embroidery tweezers or medical supply tweezers at least 4.5" long work the best.

Roxanne's Baste it with the small nozzle for precise glue placement. Although the stones are all hot fix (meaning that the glue on the stone is activated by heat), I found it somewhat easier to put a spot of Roxanne's Baste it glue down, place the stone on the glue then let the glue dry (for about 5 minutes). Then hit the stone with your iron or mini iron. The Baste it glue holds the stone exactly where you want so you can place the iron on it without worry of the stone shifting under the iron.

There is no particular step by step process other than it is easier to color first then place the stones. Make sure to heat set the coloring first before placing stones. The photo included should be the best guide for coloring as well as where exactly to place stones. However, there are detailed diagrams of each part of the design labeled with number associated with a particular stone and pencil for coloring. Please see the Excel spreadsheet printout for the rhinestone name, the size and the color code for each stone. I have also provided a close count of how many stones are used throughout the process.

If you are having difficulty setting the stones (i.e., they don't seem to stick once heat activated) you may want to refer to the VERY DETAILED instructions provided by the following link:

https://www.harmanbeads.com/assets/images/PDFs/Product%20Information/Application%20Manual/2017/SP_Application_2017_hotfix.pdf

Finally, you can contact me via email at: medinadomarts@aol.com for any questions or if you need additional rhinestones to complete your work of art!

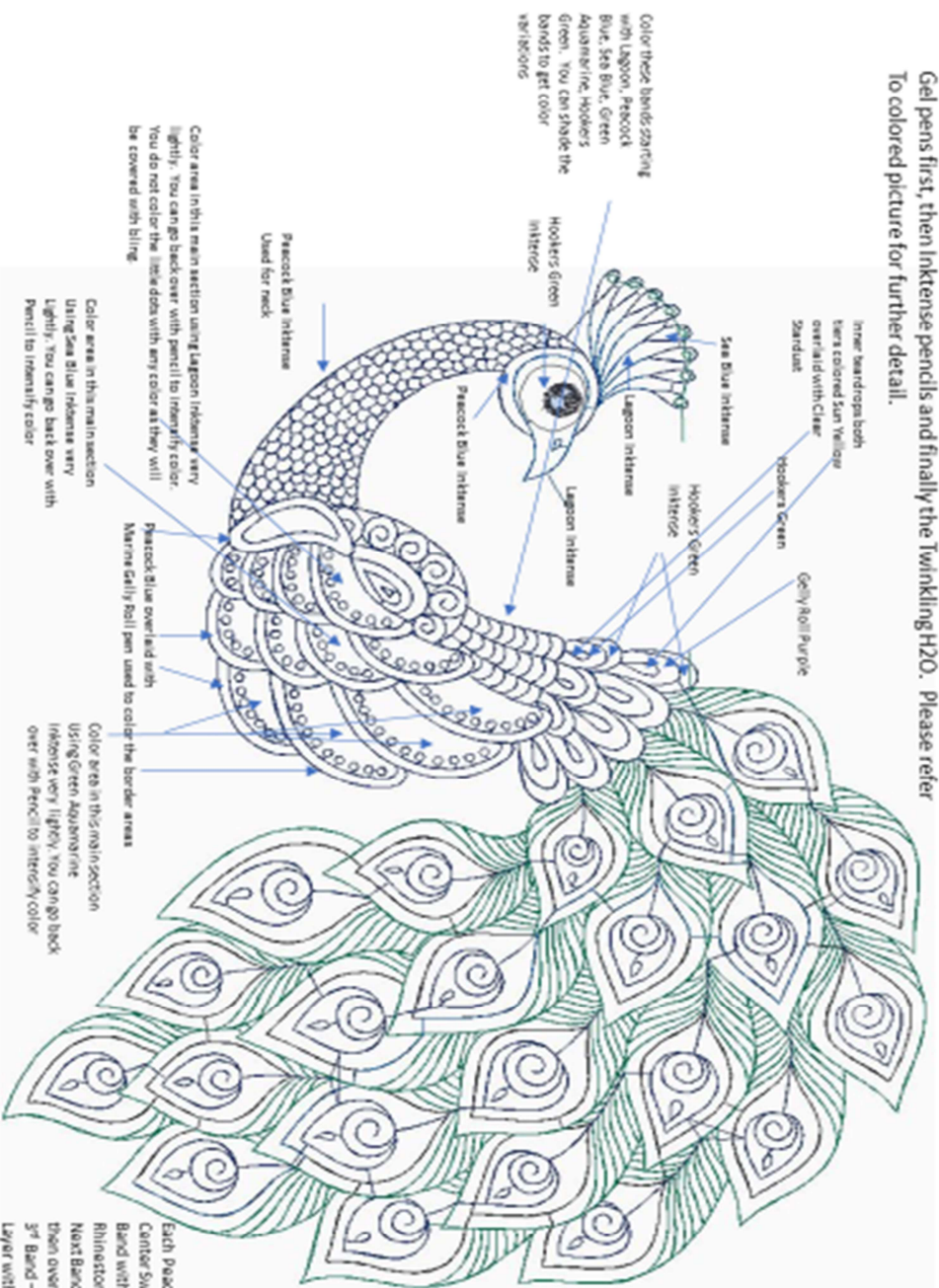
Enjoy!

Michele Markey

Medina Domestic Arts Studio LLC

Color chart

The Peacock is colored with a variety of materials. Color with Gel pens first, then Inkense pencils and finally the Twinkling H2O. Please refer to colored picture for further detail.



Note: when using Inkense pencils you must coat the penciled area with fabric medium before overlaying a gel pen on top. Let Inkense with fabric medium area dry first before using gel pen.

Each Peacock feather is colored as follows:

Center Swirl – Sun Yellow

Band with teardrop leave uncolored. It will be covered with Rhinestones.

Next Band – Color with Peacock,

then overlay with Marine Stardust

3rd Band – Hooker green Inkense pencil (heavy)

Layer with green Starching – use Hooker's Green very lightly

(keep color light by mixing in plenty of fabric medium

in palette plate)



Color for head feathers: Sea Blue top feathers; Lagoon for lower feathers

Color for head : Lagoon for beak; Hooker Green around eye; Lagoon for second circle around eye; third circle use Peacock Blue

Bling: Cobalt SS10 (1) on upper head feathers

Large Crystal (5) on eye



Color for Neck: Peacock Blue Inktense

Color area outside of swirls with very light color of Peacock blue; color swirls with Purple Gelly roll pen; color band under swirls Peacock Blue; color teardrop outer band with Green Aquamarine and inner teardrop with Purple Gelly roll pen

Small area under neck: light color of Peacock blue

Bling on Neck: In each feather place a Cobalt SS10 Stone (1)

Bling each swirl with Large Crystals (2)

Small area under neck: Fill with Tanzanite SS6 (3)

Teardrop outer band: use Emerald SS10 (6)

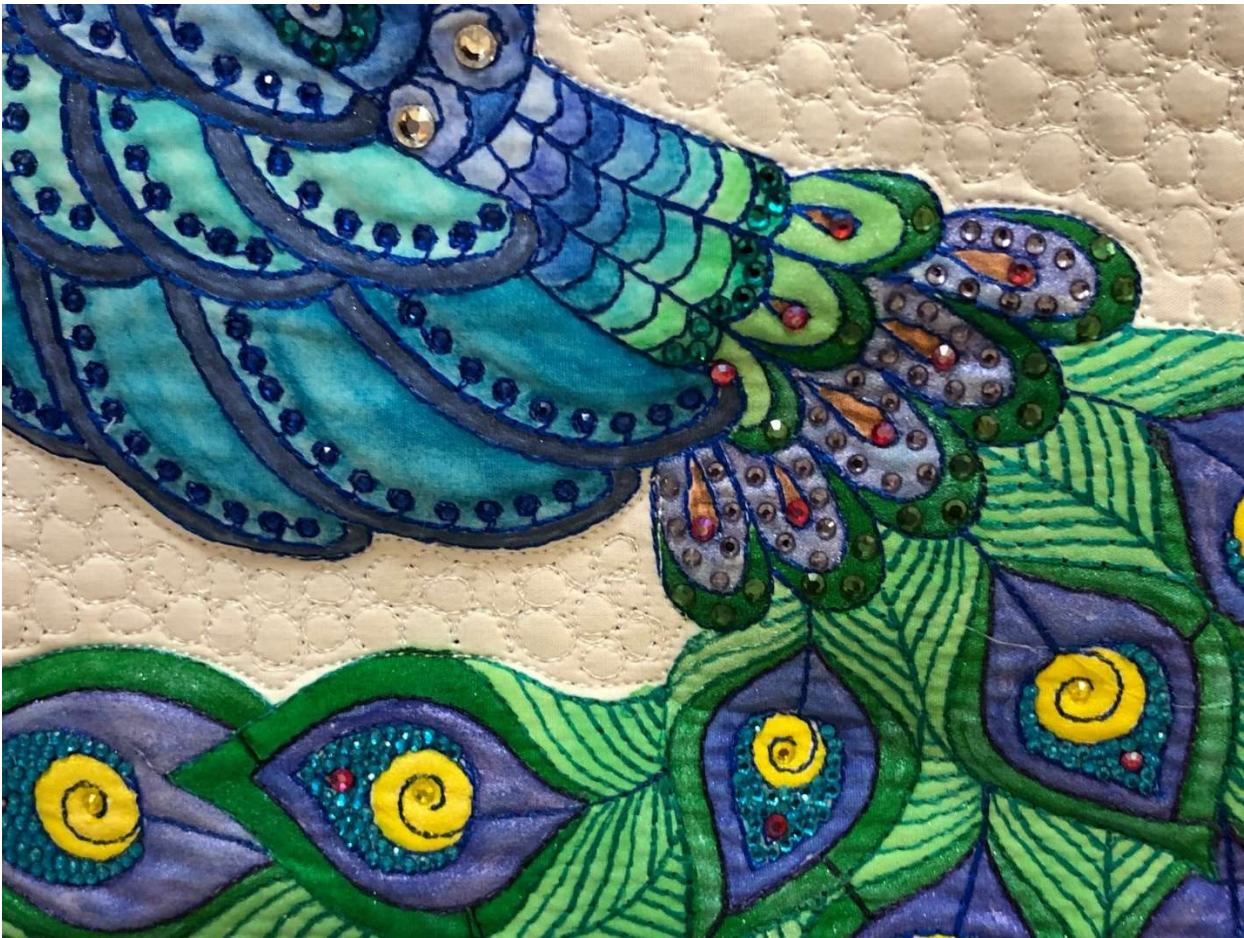
Color for Middle Wings: Row 1 (top): Light Lagoon inside wing with Peacock blue on outer band. Overcolor Peacock blue color with Marine Gelly Roll pen for extra bling.

Row 2: Light Sea Blue inside wing with Peacock blue on outer band. Overcolor Peacock blue color with Marine Gelly Roll pen for extra bling.

Row 3: Light Green Aquamarine inside wing with Peacock Blue on outer band. Overcolor Peacock Blue Row 3: Light Green Aquamarine inside wing with Peacock Blue on outer band. Overcolor Peacock Blue color with Marine Gelly Roll pen for extra bling.

Bling: Put Cobalt SS6 (4) in each circle on wing.





Color for three rows of curved band sections: Row 1- Light Lagoon, Row 2- Dark Lagoon, Row 3 - Peacock Blue, Row 4 – Light Sea Blue, Row 5 - Green Aquamarine, Row 6 – Light Green Aquamarine , last two rows light Hookers Green

Three feathers under curved band section: Color inner feathers very light Hookers Green and outer band Dark Hookers Green

Five feathers under three feathers: color inner teardrop with Sun Yellow OR copper metallic pen from Turtle (as seen in photo); color middle section with Purple Gelly roll pen and outer band Dark Hookers Green.

Bling: Put Emerald SS10 (6) on last row of curved band section. Place Siam AB SS10 (7) inside each inner teardrop of feathers. On Dark Hookers Green bands, use Green Turmaline SS12 (8) as shown in photo and use Tanzanite SS6 (3) in the Purple area in the five lower feathers.



Each Peacock feather is colored as follows:

Center Swirl – Sun Yellow

Band with teardrop leave uncolored. It will be covered with Rhinestones.

Next Band – Color with Peacock, then overlay with Marine Stardust. If you really want to get creative color over the Marine Stardust with Purple Stardust pen.

3rd Band – Hooker Green Inktense Pencil (heavy)

Layer with Green Stitching – use Hookers Green very lightly (keep color Light by mixing in plenty of fabric medium in Palette plate). The best way to achieve an even colored look to the light areas is to break off the tip of the Hookers Green pencil, pour some fabric medium in the paint palette (about the size of a quarter for fabric medium.) Put the tip of the pencil in the fabric medium and swirl it around until it melts. This will create tinted fabric medium that you can brush on directly to the light colored areas of feathers. If the color is not green enough, sharpen the pencil again, and break off more and mix into the tinted fabric medium to deepen the color.

Bling: Each Peacock feather is Blinged as follows:

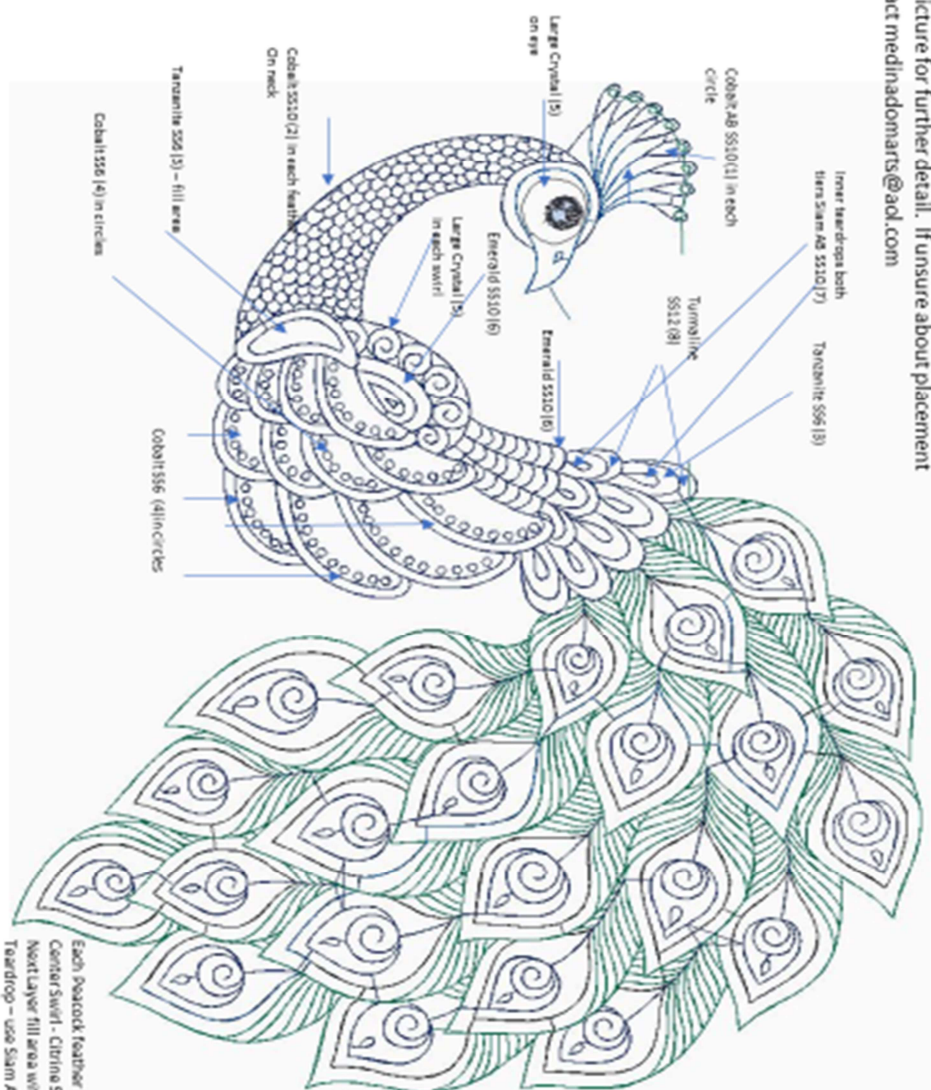
Center Swirl - Citrine SS10 (9)

Next Layer fill area with Capri Blue SS6 (10)

Teardrop – use Siam AB SS10 (6). You may want to place the teardrop crystal on first before you layer the Capri Blue.

Bling Chart

The Peacock Bling. Please refer
To colored picture for further detail. If unsure about placement
Please contact medinadomarts@aol.com



Each Peacock feather is blinged as follows:
Center Swirl - Citrine SS10 (9)
Next Layer fill area with Capri Blue SS6 (10)
Teardrop - use Siam AB SS10 (6)

	MC Cobalt AB SS10	MC Cobalt SS10	RG Tanzanite SS6	MC Cobalt SS6	Swar Crystal SS20	RG Emerald SS10	RG Siam AB SS10	Preciosa Turmaline SS12	MC Citrine SS10	MC Capri Blue SS6
Stones for Peacock										
Color Code	1	2	3	4	5	6	7	8	9	10
Feathers on top of Head	10									
Eye					1					
Neck		168								
Small oval area below Neck			45							
Swirl Centers on Chest					5					
Teardrop under Swirls						10				
Circles on Large Curved Areas on Body				81						
Three Teardrops at start of Tail Feathers							3	3		
Five Teardrops (2nd tier) at start of Tail Feathers			39				5	15		
Peacock Tail Feathers										
Center									22	
Center Area										1550
Teardrop							22			
Total	10	168	84	81	6	10	30	18	22	1550

