



FIRST LUTHERAN CHURCH

Activities

WELCOME

This booklet helps you understand what is happening at First Lutheran. We strive to grow our faith and to strengthen our community. We encourage you to get involved – it is fun and rewarding.



January 2025

GREETINGS!	2
BASICS	2
WHY FIRST LUTHERAN CHURCH?	3
STAFF	4
CHURCH COUNCIL	4
HOW2	5
HOW2 GET IN TOUCH WITH PASTOR LYNN	5
COMMUNICATIONS	5
COMMUNION	5
HOW2 KNOW IF CHURCH OR ACTIVITIES ARE CANCELLED	5
HOW2 BECOME A MEMBER	6
DONATIONS	6
FAITH FORMATION	7
WAFL (WEDNESDAYS AT FIRST LUTHERAN) PRE-K THROUGH SIXTH GRADE	7
FIRST COMMUNION	7
CONFIRMATION 7TH – 9TH GRADE	7
EGGO (SUNDAY SCHOOL) PREK-SIXTH GRADE	8
FLY (FIRST LUTHERAN YOUTH) 5TH GRADE AND UP	8
HANDY HELPERS' YOUTH COMMITTEE (9TH GRADE AND UP)	8
HS SCHOLARSHIPS/SENIOR RECOGNITION	8
FL CAMP (FIRST LUTHERAN CHURCH CAMP)	9
FAITH HAVEN	9
ACTIVITIES	10
WELCA – WOMEN OF THE EVANGELICAL LUTHERAN CHURCH IN AMERICA	10
WELCA CIRCLES	10
WOMEN'S RETREATS	11
MEN'S FELLOWSHIP	11
SPECIAL MUSIC	11
BELL CHOIR	11
BIBLE STUDY	11
QUILTING	12
2 OR MORE FELLOWSHIP (ADULTS 21+)	12
ADULT EDUCATION/FORUMS	12
LIBRARY	12
LITTLE LIBRARY	13
CRAFT GATHERINGS	13
CRADLE ROLL	13
PRAYER CHAIN	13
PRAYER SHAWL MINISTRY	13
SUPPORTING COMMITTEES	14
SHARE & CARE COMMITTEE	14
ALTAR GUILD	14
AV COMMITTEE	14
FAITH FORMATION COMMITTEE	14
PARISH NURSE	14
WORSHIP & MUSIC	15
NEW MEMBER COMMITTEE	15
FINANCE COMMITTEE	15
PROPERTY	15
CEMETERY COMMITTEE	16
ENDOWMENT FUND	16
MUTUAL MINISTRY	16
COMMUNITY INVOLVEMENT	17
CHURCHES UNITED FOR HOMELESS	17
HABITAT FOR HUMMANITY	17
MISSION JAMAICA	17
EVENTS	18
CALENDAR OF EVENTS	18
GROUP LEADERSHIP	19

GREETINGS!

Whether you are a member, or are considering membership with First Lutheran Church, we'd like to welcome you!

As you turn the pages of this booklet, you will meet hard-working, dedicated, caring people who have welcomed people into God's family for over 150 years. We want to highlight who, what, and why. Please consider jumping in with faith by getting involved in God's work. Let us know how we can add and improve this booklet so others can benefit (office@blfirstlutheran.org). Read on, ask questions, and we are here to serve you!

BASICS

Our mission statement: **Sharing Hope in Christ**

As Christians, we are called to:

- spread the good news
- encourage others in their faith
- communicate the Gospel in word and deed
- lead by example in our community and throughout the world.



We are blessed to be God's people living in a great community and living the best we can to our mission statement.

Our Giftedness

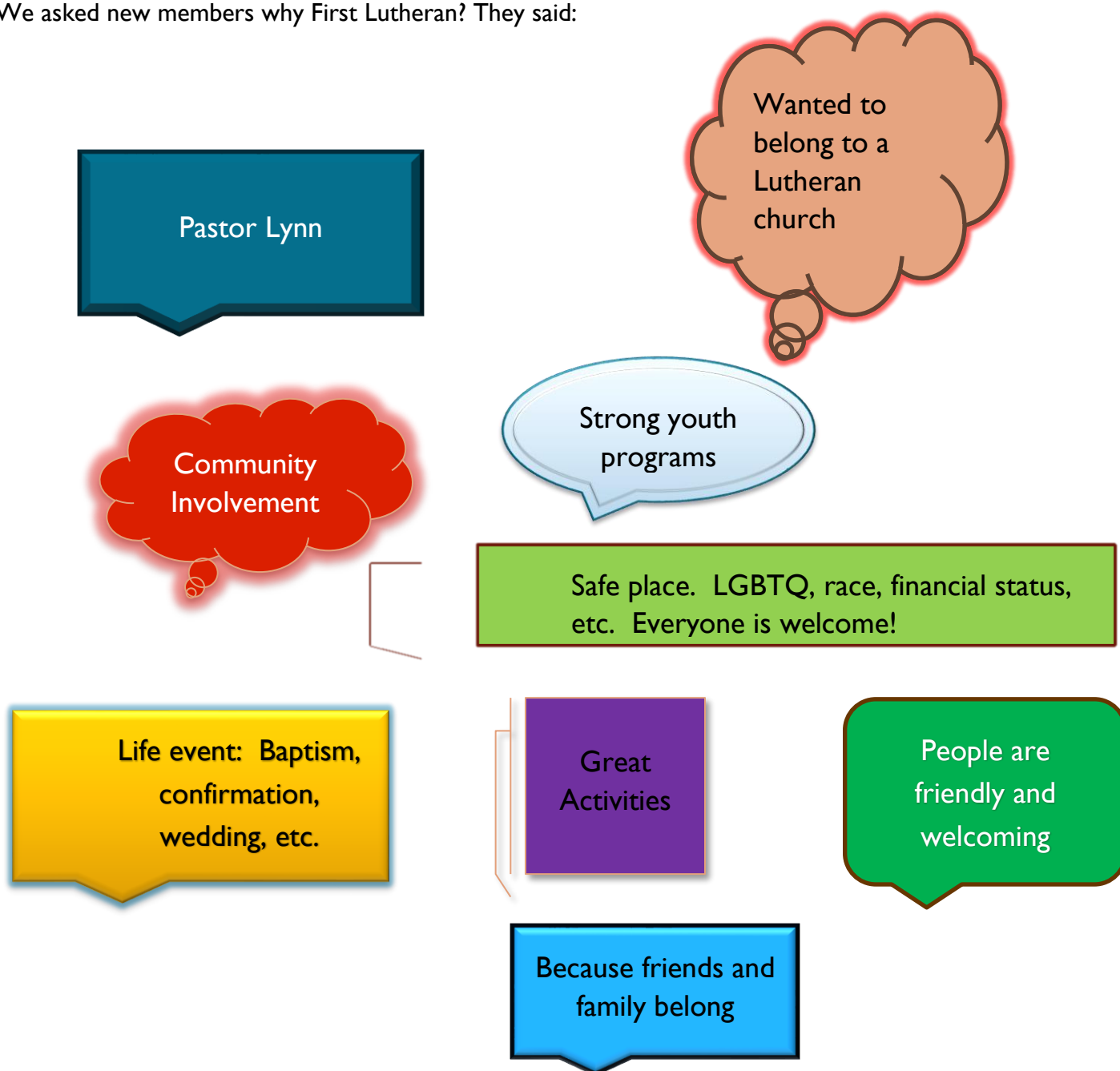
1. **Leadership/volunteers:** We have a strong culture of service. We are active in both school and civic organizations; yet find time to help our church and its mission.
2. **Facility:** In 2008, we built a new church with modern handicap-accessible facilities, ready for community and synod events.
3. **Strong community involvement.** We do this through activities to meet the needs of our surrounding community, and the world. Examples of projects and activities First Lutheran participates in are Battle Lake Food Shelf, First Lutheran Camp, Faith Haven Camp, Churches United, and Mission Jamaica.

How to Learn More about First Lutheran Church

- Our website www.BLFirstLutheran.org has a lot of great information.
- We have a YouTube Channel that shares recordings of our services and special messages: <https://www.youtube.com/@firstlutheranchurchbattlel1324>
- Give us a call! 218-864-5686
- Our staff can help via email – general questions can be answered at office@blfirstlutheran.org
- Church services are every Sunday at 10:00 a.m. Coffee and Conversation following

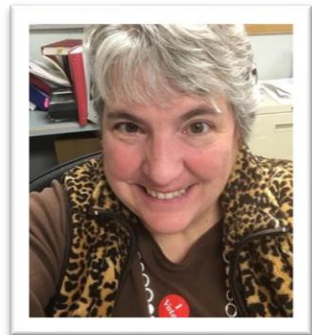
WHY FIRST LUTHERAN CHURCH?

We asked new members why First Lutheran? They said:



STAFF

We have a great staff who will guide you with your needs. Our office is open weekly from 9:00 am to 4:00 pm.



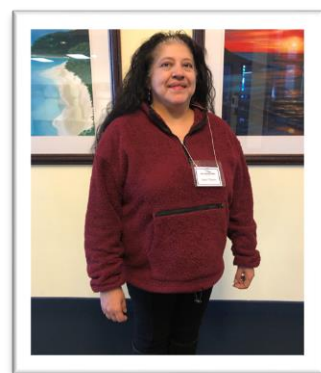
Pastor
Lynn Melchior



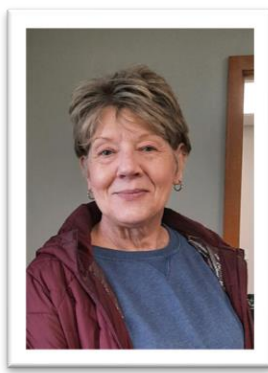
Laurie Hanson-Zelinsky
Office Admin. & Financial Sec



Missi Abfalter
Faith Formation Director



Inez Flores
Financial Assistant



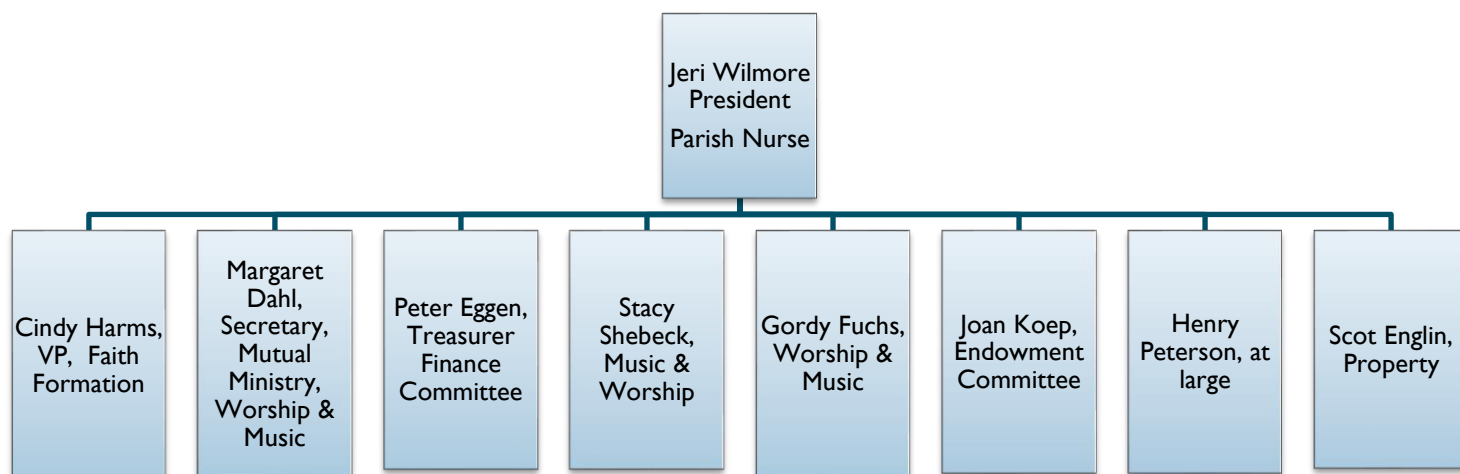
Jeri Wilmore
Parish Nurse



Sheri Olson
Custodian

CHURCH COUNCIL

The church council is nominated and then elected at an annual meeting. It comprises volunteers, including a president, vice president, treasurer, and secretary. Each board member is also involved in the leadership roles listed below.



HOW2

When you are new to anything, you have many questions. Below are answers to some common questions. If you have others that are not covered, you can email office@blfirstlutheran.org for assistance.

HOW2 GET IN TOUCH WITH PASTOR LYNN

Pastor Lynn Melchior is there to serve you. This could be because of a church-related question, personal needs, home visit request, hospital visit, death, wedding, etc. To reach Pastor Lynn you can email her at PastorLynn@BLFirstLutheran.org or call her on her cell: 218-298-0396.

COMMUNICATIONS

The church provides many communications. Key ones include regular emails on activities and news. You will also receive a paper copy of a newsletter with more detailed information on the Pastor's messages, the workings of activities, and upcoming events. Pastor Lynn also makes announcements prior to the service. Service recordings can be found on our [Facebook page](#) and [YouTube Channel](#).



COMMUNION

In the Lutheran Church, Holy Communion (often referred to as the Eucharist or the Lord's Supper) is a central sacrament that holds deep theological significance. Lutherans believe in the real presence of Christ in the Eucharist, meaning that Christ is truly present in, with, and under the bread and wine, though the elements retain their substance as bread and wine. Here at First, communion is held on the first and fourth Sunday of the month. In addition to traditional wine, white grape juice is available. Gluten-free wafers are also available. Please ask the communion attendant for an alternative. There are two stations for communion: one on the left side of the sanctuary and one on the right. Front pews are dismissed first.



An usher will direct you when it is your pew's turn to receive communion.

All are welcome to receive communion. Children who have not yet received their first communion are invited up front for a blessing.

HOW2 KNOW IF CHURCH OR ACTIVITIES ARE CANCELLED

There are weather-related cancellations. We will do our best to update the website, KVLV radio station and Facebook with a notice for our church service. For WAFL, the church follows the school's policy on closings. If school is closed due to weather, so are our activities.

HOW2 BECOME A MEMBER

There is a process in becoming a member. Some background:

- We host a quarterly information meeting after church and invite anyone to come.
 - You'll receive an information packet containing information on becoming a member.
 - You'll learn how to become a member and the activities we offer. It also gives you a chance to meet other prospective members.
- The last Sunday of the month, we recognize new members.



To get started, contact Laurie at the church – 218-864-5686.

DONATIONS

We support the church by tithing. As an ELCA church, we lean on funds raised by those involved. We also pay our district office back to our branch of membership. We also support great causes around the nation and globe.

There are many ways to make donations:

- We have offering during church. Envelopes are provided in the pews.
- Electronic Giving is very popular and can be done via your own bank's bill pay, Vanco, or Autobooks
- You can mail checks to First Lutheran Church, 505 Holdt Street, Battle Lake, MN 56515
- The church accepts stock donations by working with a financial institution.
- First National Bank of Battle Lake is willing to set up automatic donations
- Thrivent Financials' The Simply Giving Program offers support
- You will also find QR Codes on pews and communication pieces.
- Insurance proceeds or gifts from passing members are also given.
- Volunteerism is also appreciated.

To learn more about giving, see www.BLFirstLutheran.org/simply-giving . If you have any questions or suggestions, please contact office@blfirstlutheran.org.

FAITH FORMATION

Children are our future. We not only have staff who specialize in children's education and activities, but we have many strong programs to build faith at a young age.

WAFL (WEDNESDAYS AT FIRST LUTHERAN) PRE-K THROUGH SIXTH GRADE

WAFL is a free, non-denominational, religious education program for youth in Pre-K through Sixth grade. Membership to the church is not required to attend WAFL. WAFL runs annually from 3:15p.m. – 5:15p.m. September to May and follows the school calendar for holidays and snow days. Students registered to attend the WAFL program are met after school by church volunteers and walk together back to the church. During the winter months, students take the bus to the church after school.

Each year the WAFL program chooses a theme and plans lessons accordingly. Students read stories from the Bible and learn about the work of Jesus and God's work in their lives. The students will be provided with activity time and an after-school snack upon arrival. Following that, they may do various activities including learning worship music, completing an art/craft project, playing a game or activity and classroom time. The students periodically perform songs during Sunday worship and deliver a Christmas program every December. Monthly service projects are completed for various organizations or community members.



FIRST COMMUNION

First Communion is offered to any students ages 10 years old and above. Students participate in first communion classes during WAFL time with the Pastor and make their chalice.

For additional information or registration information on the WAFL program please email Missi Abfalter at WAFL@blfirstlutheran.org.

CONFIRMATION 7TH – 9TH GRADE

Students wishing to be confirmed in the Lutheran church can attend confirmation classes from September – May from 6p-7p on Wednesday evenings. Students may walk themselves to the church following school, if they wish, and do homework or watch tv etc.... in the youth room from 3:30p-5:30p. Dinner is provided for confirmation students weekly starting at 5:30p.

Confirmation students will spend one year learning Luther's Small Catechism and one year studying the bible. Students are confirmed the fall of their 9th grade year.

Any students or adults wishing to be confirmed should reach out to Pastor Lynn at pastorlynn@blfirstlutheran.org or Missi Abfalter at WAFL@blfirstlutheran.org.

EGGO (SUNDAY SCHOOL) PREK-SIXTH GRADE

EGGO is a Sunday school religious education program offered from September through May prior to weekly Sunday worship services from 9a-10a. Sunday school lessons focus on children's lessons from the weekly readings. Lessons typically include an art/craft or activity. Breakfast is provided for students and families. Parents may drop off their child and leave or they can stay and watch *The Chosen* with Pastor Lynn.

*** EGGO is currently on pause due to lack of interest and participation. If your family is interested in participating in weekly Sunday school lessons, please inquire with Missi.

FLY (FIRST LUTHERAN YOUTH) 5TH GRADE AND UP



FLY is a youth group for students in 5th grade and up for any community youth that wish to attend. FLY holds monthly activities to provide kids with safe, fun activities in the area that they may not have the opportunity to do. Examples of activities include bowling, swimming, lock ins, game nights at the church, skiing, movie nights, attending ball games, etc.... Church membership is not required. Events are generally free or limited cost. (If there is ever a financial burden please speak with church staff.)

HANDY HELPERS' YOUTH COMMITTEE (9TH GRADE AND UP)

The Handy Helpers Youth Committee is for confirmed young adult members of the church. The purpose of the committee is to provide young adults with a voice and leadership within the church. Handy Helpers will focus on building essential life skills, participate in service projects to care for their community, provide insight and suggestions on how to build a more robust and youthful congregation, meet with church leadership on any issues or areas of concern and continue with faith formation education. The Handy Helpers Committee meets weekly on Wednesdays from 5p.m.-7p.m.. They are responsible for preparing and cleaning up their own dinner.

If you are interested in joining the Handy Helpers committee, please email Hanna Cathey at hannaloukoep@gmail.com or Missi at WAFL@blfirstlutheran.org.

HS SCHOLARSHIPS/SENIOR RECOGNITION

First Lutheran Church provides an annual scholarship to graduating high school seniors that are members of the congregation. Students must have the intention to continue their education at a 2yr or 4yr college or university or equivalent program/certification. Various church committees provide funding for the scholarship; however, the Scholarship Committee determines the amount and number of scholarships awarded each year. Applications and required paperwork must be submitted to the church office mid-April of their graduating year.



If you have any questions, please contact Pete Eggen at eggenpm@gmail.com or Cindy Harms at charms1023@yahoo.com.

FL CAMP (FIRST LUTHERAN CHURCH CAMP)

FL Camp is a summer camp held at the church for children going into kindergarten and up (*PreK children will be considered on a case-by-case basis. Please inquire with Camp staff*). Camp runs from the beginning of June until

the end of August. Camp hours are Monday-Thursday from 7a.m.-5:30p.m. and daily fee for the camp is TBD on an annual basis. Camp scholarships are available for those experiencing financial hardship; please inquire with camp staff.



FL Camp provides breakfast and three daily snacks. Families are required to provide their child with a bag lunch daily.

Transportation to and from Battle Lake

summer rec activities will be provided. FL Camp will have fun vacation Bible school themes throughout the summer and incorporate the VBS music, activities, and curriculum into the daily schedule. Age-appropriate indoor and outdoor activities are scheduled with arts/crafts, games, and sporting activities.

Camp staff are first aid and CPR certified. If you are interested in working as part of the camp staff please pick up an application in the church office. For additional information on Camp please inquire with Missi for a camp handbook.

FAITH HAVEN

Faith Haven camp located just seven miles outside of Battle Lake reserves the second week of July for all local congregations to attend the camp at a discounted rate. Children aged 6+ are invited to attend day camp and children aged 10+ are invited to attend overnight camp. Family camp is available for those interested. All children will be provided with three meals and three snacks per day. Activities at camp include music and worship, water activities, team building games, art and crafts, campfires, etc....



Information on specific dates and costs will be provided around April or May each year. Camp scholarships are available.

ACTIVITIES

First Lutheran Church offers many opportunities to help you grow in faith and serve the community. Here is a list of them, including a contact list at the end of this booklet. Feel free to attend their meetings to learn more about the activities. We encourage you to worship, have fun, and serve alongside others!

WELCA – WOMEN OF THE EVANGELICAL LUTHERAN CHURCH IN AMERICA

WELCA is the **Women of the Evangelical Lutheran Church of America**. Presently we have 4 circles with each meeting monthly. Our monthly meetings usually have a Bible study, food, time for visiting, and a business meeting.

Annually we work on many projects:

Baby Care Kits, Personal Care Kits, Dress-A-Girl Project, Prayer Shawls, Quilts, School Kits, and Baby Quilts.

In 2024 we donated to: Battle Lake Food Shelf, Battle Lake Prom, Lutheran World Relief, Churches United, High School Graduates, and other local needs.

To raise funds and be an active part of the Battle Lake area community: A Fall Festival is held in October and a Rummage sale in June during the all-town garage sales.

Along with our projects, we have chair people to cover:

- Mission in Action
- Mission in Growth
- Mission in Community
- Sunshine
- Kitchen Consultant
- Wedding Consultant
- Librarian
- and each Circle has a Chairperson.



The Chair people meet once a month along with the Faith Formation Director, and Pastor Lynn to have devotions, discussions of current needs, and to have coordinated communications with all the circles.

WELCA is a very vibrant group and is a great place to grow in faith and friendship. You do not need to attend meetings to help with any of the projects. Join us and bring a friend!

WELCA CIRCLES

Circles are small groups of women's fellowship gatherings. Below are the circles and meeting times. To discover who leads each circle, refer to the back of this booklet under leadership lists.

Circle	Gathering Schedule	Meeting Place
Evening Circle	3 rd Sunday of the month at 6:30 p.m.	Church
Lydia Circle	2 nd Tuesday of the month at 9:30 a.m.	Church or Lakeview Assisted Living
Mary Circle	2 nd Wednesday of the month at 9:30 a.m.	Member's homes
Naomi Circle	2 nd Tuesday of the month at 9 a.m.	Church

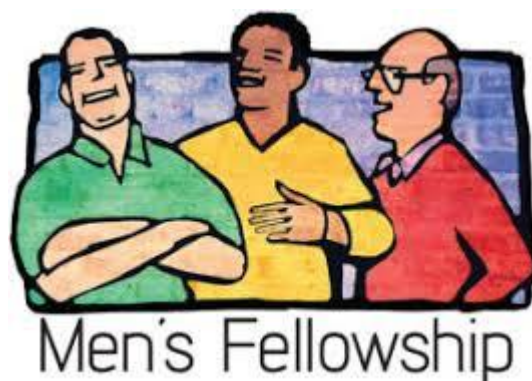
WOMEN'S RETREATS

First Lutheran holds two women's retreats annually, in the fall and spring, as a way for women to connect and rejuvenate. All women are invited to attend. Retreats are for women of all ages and a strong emphasis is placed on building intergenerational relationships. Women's retreats have a specific focus but generally work to enhance faith, self-care, and soul work.

MEN'S FELLOWSHIP

First Lutheran Men's Fellowship meets the first Thursday of the month at 8:30 a.m. at the Shoreline Restaurant. Men of the congregation are invited to fellowship and Bible Study. This active group helps the church and community in many ways:

- Give contributions to the Food Shelf, Lutheran Social Services, and Salvation Army
- Participate in Habitat for Humanity
- The Men serve an annual breakfast, and also a potato bar lunch.
- Provide Christmas grocery cards for the people who need help in the community.
- They also do a spring community clean up with the students and serve all workers' lunch
- To raise money for our causes, the men have a brat stand at the Arts in the Park event.



SPECIAL MUSIC



Music brings life to the church! First Lutheran enjoys listening to our musicians playing our organ and grand piano. We have special music —as often as we can. We are also in the process of getting a Praise Group together for services. Musicians are encouraged to share their talents as special music during the church services.

BELL CHOIR

The bells/chimes choir at First Lutheran is a two-octave, handbell and chimes choir — G just below middle C to G an octave and a half higher than middle C. We meet once a week, September–May, and try to play once a month for special music during the church service.

BIBLE STUDY

Our church has an ongoing Bible Study that focuses on different parts of the Bible. This year it's around Revelations. Expand your understanding of the Bible and join this group.

QUILTING

Quilters meet every Monday at 9 a.m. and last till around noon. We enjoy coffee and fellowship together. We mostly tie quilts. Our tops are usually sewn on our own time at home. There is a lot of material donated and used by quilters and others as needed. If someone wishes to sew from home, they can use this material. We also have packets of blocks cut, ready to be used, which you are welcome to keep.

This small, friendly group consists of around 8 ladies most Mondays. We complete quilts for Lutheran World Relief, Food Shelf, Churches United, nursing homes and whomever needs one.

To raise funds for materials, we have The Bee Hive, located in the church fellowship hall, which is a collection of various craft items for sale.



2 OR MORE FELLOWSHIP (ADULTS 21+)

2orMore Fellowship holds monthly events for adults to meet and fellowship outside of the church in a more casual environment. Events vary in time and location but generally, we attend various restaurants and bars to chat, eat, play card games, or attend various community events with a group. Participation in all events is not necessary, come and go as you please. The church will pay for appetizers when attending events at a restaurant or bar, however, adults are required to purchase any alcoholic beverages if they choose to drink. Church membership is not required to participate.

If you have additional questions or would like to suggest an event, please contact Missi, at WAFL@blfirstlutheran.org

ADULT EDUCATION/FORUMS

Faith Formation holds monthly adult forums on various topics as a way for us to uphold our Baptismal promise of serving ALL people and striving for justice and peace in all the earth. Adult forums are a way to educate the congregation and community members about topics and issues relevant to our lives. Adult forums educate on personal topics such as suicide prevention, drug and alcohol addiction, and health issues like stroke and dementia. Adult forums also educate on community services or issues like Smart911, composting or distracted driving. Finally, forums provide a platform for community organizations such as Churches United, Prospect House or Farm Rescue to discuss their service.

Adult forums are held monthly on Sundays following worship service at 11:15a.m. in the fellowship hall.

LIBRARY

Our church has been blessed with a sunny and accessible library. The fiction section offers a variety of classical and modern fiction. Reference and research volumes offer help for Bible study and answers to questions of faith. The shelves contain many devotional and inspirational books for private use or leading



devotions at committee or bible study meetings. In addition, you can find biographies of people from the church, political, and entertainment worlds. Take time to peruse the shelves, and you will be amazed at the quality and quantity of volumes. Let us know if you have ideas for additions to our collection. We are always looking for people to care for our books, write reviews, and suggest ways to increase the use of our special library.

LITTLE LIBRARY

Our little library is a gift to the children who live near or visit Battle Lake, a resort community. It only contains kids' books and will at times include card games, school supplies, or craft items. Its purpose is the same as any library: to encourage reading! It was built by church members and decorated by 5th and 6th graders in our WAFL program. Come and check it out. Donations of children's or young adult books or simple craft items to the library are always welcome.

CRAFT GATHERINGS

For those who enjoy crafts; we have get-together a few times a year to do individual projects or a craft all can make as a group. Our get-together which usually happen in the evenings or on weekends. If you enjoy crafts, this is a great group for participate in.

CRADLE ROLL

The Cradle Roll is wrapped around Baptism. When the child is baptized, the family receives a handmade blanket. The baby's family receives monthly messages between 1–36 months, leveraging a program called The Splash Series. A year after baptism, they are invited back for a “Splash” at the baptismal font and receive a fluffy towel and a rubber ducky. Baptized adults receive a handmade quilt.

PRAYER CHAIN

Prayer is important to our faith. First Lutheran Church prays for those in need. Contact Carol Boyum at 218-770-4168 and share your needs. She then reaches out to the prayer chain volunteers with this confidential information to pray for them.



PRAYER SHAWL MINISTRY

This group knits crochets, or weaves shawls that will be given to people who are dealing with difficult times or health-related issues. Patterns are available.

SUPPORTING COMMITTEES

We have established groups who work to support the church in specific areas. We encourage you to learn more about these and help where you are interested. Our church would not operate without volunteers like you!

SHARE & CARE COMMITTEE

The Share and Care activities involve all congregational members in the worship services of the church. Members are asked to help two months of the year; you can request the month and then you are assigned to groups. Members will serve as ushers, lectors, greeters, communion, and coffee servers. They can help with funerals and assist at the nursing home. Each group meets after the second Sunday service during the month BEFORE they are assigned and volunteer for the tasks they do in the upcoming month.

ALTAR GUILD

The altar guild is responsible for some of the activities that complement worship. It sets up communion. The Altar Guild is also responsible for decorating the sanctuary, including changing paraments (altar clothes) according to the church year. There are special banners for funerals, baptisms, confirmations, weddings, and other special occasions. Ordering palms, Easter lilies, poinsettias, etc. for celebrating Easter and Christmas is the responsibility of the Altar Guild.



AV COMMITTEE

The AV team works with sound and video for each service. That includes working with software to launch our live feeds and setting up and maintaining all mics required and hearing devices needed for each service.

Team members manage cameras for online viewing and the soundboard. They also create and run the PowerPoint presentations for each service so that all can follow along during worship. Training is available for anyone who wants to join this group.

FAITH FORMATION COMMITTEE

The purpose of the Faith Formation Committee is to provide educational opportunities for children to adult attendees. They consider guest speakers, topics/themes of classes and more. The team meets on the 2nd Tuesday of every month at 5:30 p.m. in the conference room. If you are interested in joining the faith formation team, please feel free to attend a meeting.

PARISH NURSE



Jeri Wilmore, RN, is our Faith Community Nurse. This position is designed to provide body, mind, and spirit health promotion and disease prevention services. Jeri is equipped to be a health educator and advocate, personal health counselor, referral agent for medical care and housing, support group coordinator, home visits, and volunteer trainer. This is a volunteer position with the church paying for mileage, training, and supplies.

WORSHIP & MUSIC

The Worship and Music Committee's goals are to promote a meaningful and inspirational worship experience for our church family. They meet monthly and try to encourage the involvement of the congregation for our worship process.

A subcommittee, along with the pastor, chooses hymns and special music for the upcoming month, trying to coordinate hymns with the scripture lessons. Other tasks include assigning organists and pianists for each Sunday and contacting musicians for special activities. The committee also oversees some of the work of the audiovisual team, which makes services run smoothly and provides an online link for viewers on our website.

NEW MEMBER COMMITTEE

This group is to help new members have a great experience in their first year of belonging to First Lutheran's membership. We consider messages, and materials, and work to ensure new members understand opportunities of getting involved.

FINANCE COMMITTEE

The Finance Committee meets every month to review First Lutheran's financial health up to the end of the previous month. Key areas of review are:

- General fund checking balance
- Designated fund checking balance
- Unpaid principal balance and payoff trend
- General Fund Revenue/Expense spreadsheet for First Lutheran accounts
- Annual Budget percentage spent for general fund accounts at First Lutheran

Based on the review above, the Finance Committee takes action to correct or recognize negative trends.

The finance committee chair also prepares the annual budget proposal for the congregational meeting in September. The Finance Committee approves the budget before sending to the Council.

PROPERTY

The objectives of this committee are:



- To protect and maintain the physical assets of the congregation.
- Keep an inventory of personal property.
- Oversee insurance coverage.
- Maintain fire and safety drills
- Conduct inspection and maintenance of all buildings, furnishings, and equipment.
- Maintain a policy on building security.
- Maintain a policy for building use.

Everyone is asked to help with the building and grounds upkeep.

CEMETERY COMMITTEE

The caretaking includes upkeep, like mowing, at the cemeteries. The committee also provides recordkeeping and plot sales.

The Cemetery Committee is responsible for three locations:

- First Lutheran Cemetery is located at N. McKinley Ave & W Bowman Street, close to the school.
- Trinity Cemetery 22701 Silver Lake Road West, Battle Lake
- Skibtvedt Cemetery is at 25284 State Highway 78, Battle Lake

ENDOWMENT FUND

The First Lutheran Church endowment fund provides gifts, scholarships, and grants from resources generated by the fund. By investing safely and securely, we achieve returns that offer more than just interest. Currently, the fund is invested in the ELCA Missionary Growth Fund, which supports the church in various meaningful ways.

The endowment fund was initially established with generous contributions from the Howland, M. Johnson, G. Rocksvold, Lindgren, Stoller, and Rasmusson families. Since then, additional endowments have been added. Contributions are invested, and a percentage of this is given to fund selected causes. Because the general fund's principal remains intact, these gifts will serve as a lasting legacy.



The endowment fund operates independently of the First Lutheran church's budget. All contributions are tax-exempt and are placed in a fund approved by the endowment committee.

MUTUAL MINISTRY

The church board and pastor appoint Mutual Ministry members. They meet a minimum of 4 times a year. They try to keep the pastor up-to-date on anything new going on in the church body that needs to be addressed.

We monitor that the pastor takes vacations, continues education, and is doing what is expected. Also, an important role is to keep the course of our church's mission. Everything on this board is confidential.

COMMUNITY INVOLVEMENT

First Lutheran Church is very involved in the Battle Lake community. We are active in events; we provide care to those in need, and we support the city as our building is a Storm Shelter. See a list of examples below:

Art of the Lakes – brat stand	Beautify Battle Lake – participate in town clean up, along with providing lunch for all of the volunteers.	Christmas Baskets are given direct and also through the Food Bank.	Churches United is a recipient of funds and service projects.	Endowment Funds offers scholarships to graduating students
Food Shelf – financial support, often supply food for the food shelf. Volunteers too.	Giving Tree- we give gifts to local children	Habitat for Humanity - Men's group involvement.	Little Library - to take and give books.	Parish Nurse provides regular educational sessions for anyone in the community.
Quilting group gives quilts for many local contacts.	Storm Shelter - our building is open to the public during a storm.	Faith Haven financial assistance for those who need it.	Jamaica Mission - building homes	WAFL includes any local child; those who belong to our church and those who want to learn about God.
Wenonga Days involvement.	Network Battle Lake	After School Care Scholarships at BL school	Communion Services at Nursing Home & Lakeview Assisted Living	First Lutheran Camp

CHURCHES UNITED FOR HOMELESS

Our church supports Churches United in Moorhead, as they provide service to our area for those in great need. We have a donation box in the building's entry, and we often collect money through our giving. The quilting team donates several homemade quilts each year. CUH can always use warm socks for men and women, warm winter clothing in new or good used condition, new or gently used warm blankets, and personal care items such as new shampoo, conditioner, body wash, and disposable diapers. A more complete list of ongoing needs is available outside Fellowship Hall.

HABITAT FOR HUMMANITY

Our Men's Group helps great causes. Including building homes for community members.

MISSION JAMAICA

Congregational members volunteer to travel to Jamaica to build homes and help within the community. They also bring donations and tools to share with local communities.



EVENTS

What would fellowship be without events? Below you'll find frequency and a typical calendar of events. Below show a rhythm of key groups:

Weekly	Monthly	When Scheduled
<ul style="list-style-type: none"> • WAFL - school year • Confirmation - school year • Quilting • Bell Choir (not summer) 	<ul style="list-style-type: none"> • Circle Meetings • Bible Study • Church Council • Adult Forums • Youth Events • Most committee meetings • WELCA & Men's Fellowship 	<ul style="list-style-type: none"> • Craft Gatherings • Special Events and fundraisers • Women's Retreat

CALENDAR OF EVENTS

January	February	March
	Valentines Dinner	Lent Meals
April	May	June
Easter Egg Hunt	Baccalaurette	WELCA Rummage Sale
		FL Camp
July	August	September
Wenonga Days: Parade, food stands and outdoor service.	Community BTS Open House at BL School	Annual Meeting
FL Camp	Men's fellowship does Art in the Park	
Faith Haven Camp	FL Camp	
October	November	December
WELCA Fall Festival	Advent	Youth Christmas Program
Pet Blessing		Christmas Evening - Hot Chocolate Bar & Activities
Confirmation		

GROUP LEADERSHIP

First Lutheran Church Group Leaders - please contact them directly for additional information.			
Altar Guild	Ann Rasmusson	605-999-4839	annkrasmusson@gmail.com
Altar Guild	Holly Johnson	218-371-2407	lhjohns@arvig.net
AV Committee	Laurie Zelinsky	218-731-1575	office@blfirstlutheran.org
AV Committee	Mike Youngblood	218-282-1324	mikeyoungblood@prtcl.com
Bell Choir	Gail Nelson	763-302-9760	nwcolovers@yahoo.com
Bible Study	Pastor Lynn	218-864-5686	PastorLynn@BLFirstLutheran.org
Cemetery Board	Jim Sagerhorn	218-770-3517	mnjim1@arvig.net
Church Council	Jeri Wilmore	218-371-6893	parishnurse@blfirstlutheran.org
Churches United of Homeless	Margaret Dahl	701-361-4712	margstranddahl@gmail.com
Cradle Roll	Cathy Englin	218-282-0997	cmge135834@yahoo.com
Craft Gathering	Kim Peterson	701-261-7307	kimkpeterson@outlook.com
Endowment Fund	Jason Severson	218-770-7824	jasonj@prtcl.com
Evening Circle	Doreen Stave	701-430-0353	doreenstave@gmail.com
Faith Formation	Missi Abfalter	320-333-7461	Waf1@blfirstlutheran.org
Finance Committee	Mike Youngblood	218-282-1324	mikeyoungblood@prtcl.com
First Lutheran Day Camp	Missi Abfalter	320-333-7461	Waf1@blfirstlutheran.org
Library	Kathy Rickers	717-799-2656	kerickers@gmail.com
Little Library	Margaret Dahl	701-361-4712	margstranddahl@gmail.com
Lydia Circle	Linda Poll	218-408-3048	cliffpoll@gmail.com
Mary Circle	Carol Nelson	218-770-0220	cpnelsonus@yahoo.com
Men's Fellowship	Jim Aamot	612-803-2852	jimjulie73@yahoo.com
Men's Fellowship	Scot Englin	218-560-1964	soenglin38@yahoo.com
Music	Gail Nelson	763-302-9760	nwcolovers@yahoo.com
Mutual Ministry	Nancy Quam	218-371-0576	nancyquam@gmail.com
Naomi Circle	Marcia Eggen	507-381-8769	eggenpm@gmail.com
New Member Committee	Kim Peterson	701-261-7307	kimkpeterson@outlook.com
Prayer Chain	Carol Boyum	218-770-4168	pcboyum@gmail.com
Prayer Shawl Ministry	Jeri Wilmore	218-371-6893	parishnurse@blfirstlutheran.org
Property Committee	Scot Englin	218-560-1964	soenglin38@yahoo.com
Quilting	Carol Sagerhorn	218-535-1501	mnjim1@arvig.net
Share & Care	Missi Abfalter	320-333-7461	Waf1@blfirstlutheran.org
WAFL	Missi Abfalter	320-333-7461	Waf1@blfirstlutheran.org
WELCA	Nancy Quam	218-371-0576	nancyquam@gmail.com
Worship and Music Committee	Laurie Zelinsky	218-731-1575	office@blfirstlutheran.org