

First Lutheran



May 2025

NEWSLETTER

The world is different from when our parents were around. The world is different even from our own childhood. Changes seem to come faster and faster. New technologies are both wonderful and destructive. The pandemic robbed a whole generation of children of some much needed social skills. While we grieve the loss of what we knew, we still need to embrace 2025. In May, the council begins a visioning process that will help shape our future. We will attempt to answer the questions: What is God calling us to do? Where do we see ourselves in 3 to 5 years? Let us lean into the guidance of the Holy Spirit and remember we don't know everything. Take a moment and ponder how this story can apply to us today. ----Pastor Lynn

Be Watchful of the Future

If people had been asked in 1968 which nation would dominate the world in watchmaking during the 1990s and into the twenty-first century, the answer would have been uniform: Switzerland. Why? Because Switzerland had dominated the world of watchmaking for the previous sixty years.

The Swiss made the best watches in the world and were committed to constantly refining their expertise. They invented the minute hand and the second hand. They also led the world to discover better ways to manufacture the gears, hearings, and mainsprings of watches. They even pioneered waterproofing techniques and self-winding models. By 1968, the Swiss made 65 percent of all watches sold in the world and claimed as much as 90 percent of the profits.

By 1980, however, they had laid off thousands of watchmakers and controlled less than 10 percent of the world market. Their profit domination dropped to less than 20 percent. Between 1979 and 1981, fifty thousand of the sixty-two thousand Swiss watchmakers lost their jobs. Why?

Important Dates

Church Cleaning	May 3
Church Visioning	May 4
Women's Retreat	May 9
Churches United	May 11
Blood Drive	May 13
2 orMore study	May 15
Fly Lock-in	May 16
Pay off Celebration	May 18
Climate Awareness	May 20
Fall Prevention	May 22
Ninja Anywhere	May 24
FLCamp starts	May 27
Synod Assembly	May 30-31
Honor Flight forum	June 8
2 orMore study	June 19
FLY @ Glendalough	June 29
Blood Drive	July 2
FLY @ Long Prairie	July 11
2 orMore study	July 17
Faith Haven starts	July 27

Table of Contents

Pastor's notes	Page 1, 2
Library	Page 2
Noisy, directory	Page 3
Events	Page 4, 5
Holy Faith	Page 6, 7
Worship & Music	Page 8
WELCA, Men, S&C	Page 9
Paintings	Page 10
Parish Nurse	Page 11
Finance & Play.	Page 12
Council	Page 13
No Bake Sale	Page 14
Calendar	Page 15

The Swiss had refused to consider a new development—the Quartz movement—ironically, invented by a Swiss. Because it had no main-spring or knob, it was rejected. It was too much of a paradigm shift for them to embrace. Seiko, on the other hand, accepted it and, along with a few other companies, became the leader in the watch industry.

The lesson of the Swiss watchmakers is profound. **A past that was so secure, so profitable, so dominant was destroyed by an unwillingness to consider the future.** It was more than not being able to make predictions, it was an inability to re-think how they did business. Past success had blinded them to the importance of seeing the implications of the changing world and to admit that past accomplishment was no guarantee of future success.

(Baker Books, Rethinking the Church, by James Enery White)



Save the date for a Debt Retirement Celebration:

Sunday, May 18th

Hear Bishop Bill Tesch preach and enjoy the burning of the mortgage.



From Our Church Library

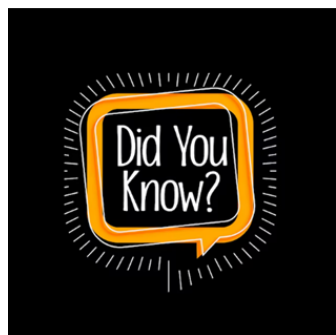
Greetings to all! Good reads from our library.

Dawn at Emberwilde by Sarah. E. Wilde is the story of a teacher at a school in Regency, England, who confronts the unexpected arrival of a stranger with news of unknown relatives, which turns her world upside down.

The Glory of Ordinary Time by Candace Simar emphasizes the ongoing ministry and teaching of Jesus and is a time for growth, faith and reflection.

Another book by Simar is Sister Lumberjack. This book takes place in the logging camps of northern Minnesota, where three lives intersect in a camp.

Ever the Land by Reuben Parson. Dr. Parson is a 1927 graduate of Battle Lake High School and a retired college professor after 29 years of teaching. The historical book recounts the life of his paternal grandparents who lived in Otter Tail County. Enjoy!



*That as of April 28th, **FLCamp** already has 31 students registered? FLCamp doubles as Vacation Bible School and Summer Child Care for our community. It runs M-TH, 7:30 am to 5:30 pm. We hire high school students to work with adults and charge \$30 a day.

*That our building insurance **increased** by \$6,000 this year? Luckily we have a council member who negotiated the increase down to \$4,000. Churches all over the region are having the same skyrocketing premium costs.

*That the council determined **NOT** to move the Creation Paintings? There is more information on the formation of those paintings on page 10.

*That, thanks to grants, we have **playground equipment**? We hope to install the equipment this spring. See page 12 for more information on the location.

*That we have been using our **church van** to pick up WAFL students when ½ days fall on Wednesdays? Plus we have made several FLY trips using the church van.



May noisy offerings will be going towards FLCamp Scholarships
June noisy offerings will be going towards our Veterans Honor Flight



New Pictorial Church Directory

As we work on the final stages of our picture directory, we need your updated information. In the last five years:

*Have you moved?

*Have you given up your landline?

*Changed or added an email address? (Would love to send to emails.)

If, so let the office know at 218-864-5686 or office@blfirstlutheran.org.

Finally, do we have a recent photo of you?

If not, please stop into the office for a quick photo or email to the office. We are getting so close to finishing this! Thank you and God's Blessings!!

UPCOMING EVENTS

Due to a scheduling conflict the Women's Retreat has been rescheduled to **Friday, May 9th from 5p-9p.**

It's All About Grace spring women's retreat. The power of prayer is a personal practice that can provide comfort, strength, and a sense of connection to something greater than ourselves. Come experience the grace of God for yourself. \$15/person to cover the cost for lunch. RSVP to missi.abfalter@gmail.com by April 28th.



Sunday, May 11th Devlyn Brooks, CEO, from Churches United will be visiting First Lutheran Church during the normal worship service time and will also be speaking afterwards. Stay for fellowship to get an update on Churches United.



SAVE A LIFE



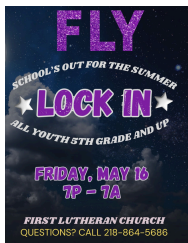
GIVE BLOOD

Tuesday, May 13th there will be a blood drive at First Lutheran Church from 12p-6p. Please call 1-800-Red-Cross (800-733-2761) or go to RedCrossBlood.org to schedule an appointment. Enter Battle Lake as the location.

Thursday, May 15th 2orMore Fellowship will meet at ABC Brewery from 5:30p-7:30p. We will be discussing the paradox between Rest & Growth from the Everything [in] Between series. Appetizers will be provided.



Friday, May 16th FLY will be having a lock in from 7p-7a to celebrate the end of the school year. All youth in 5th grade and up are invited to attend.



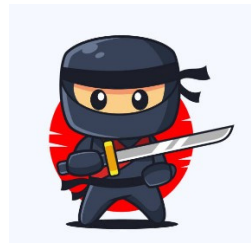
Bishop Bill will join us at First Lutheran Church on **Sunday, May 18th** to worship and celebrate the paying off of the mortgage.



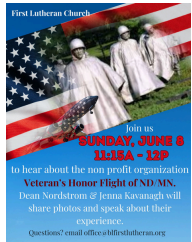
Thursday, May 22nd at 11am there will be a Fall Prevention Forum in the fellowship hall. Amy Dallman from Dancing Sky Area Agency on Falls will be here to speak on the topic. There will also be a version of bingo with prizes.



The Lakes Area Community Center will be hosting a Ninja Anywhere event **Saturday, May 24th**. First Lutheran has reserved a vender space to host a kids activity during the event. We are looking for a few volunteers to help oversee this event on May 24th from 8:30a-3p. Please speak with Missi.



Sunday, June 8th Dean Nordstrom and Jenna Kavanagh will be sharing their experience with the MN/ND Veterans Honor Flight Organization. They will speak about the organization, share photos from their trip and speak about how you can help to support this organization. Join us after worship service.



Thursday, June 19th 2orMore Fellowship will be going to Zorbaz on Ottertail Lake from 5:30p-7:30p. We will be discussing the dichotomy Lost and Found from the Everything [in] Between series.



Sunday, June 29th FLY will be having a picnic at Glendalough State Park from 3p-6p. Kids can swim if weather permits, there will be games, activities and a campfire. Open to all youth in 5th grade and up. We will meet at the church at 2:45p or you can meet us there.



Friday, July 11th FLY will be going to the Long Prairie Drive In to see the movie Jurassic World Rebirth. We will meet at the church at 6:30p and arrive back around 1am. Please RSVP to missi.abfalter@gmail.com if you intend to come by 7/7. Open to all 5th graders and up.



Thursday, July 17th 2orMore Fellowship will be meeting at Beach Bums from 5:30p-7:30p. We will be discussing Righteousness & Mercy from the series Everything [in] Between. Appetizers will be provided.



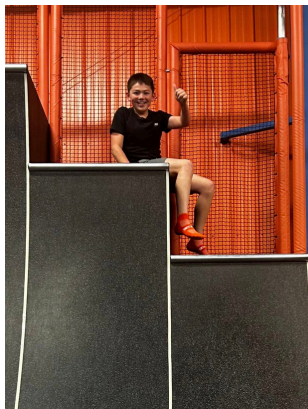
Holy Faith

Faith Formation held our 2nd Annual Easter Egg Hunt on Saturday the 12th. There were approximately 40-50 children in attendance with their families. We had a good mix of congregation members, WAFL families and community members in attendance. We hid approximately 2000 eggs both inside and outside of the church since the weather was so nice. Everyone had a great time with face painting, crafts, photos and the egg hunt. Thank you to everyone that donated candy and volunteered to come and help during the event!! It was a lot of fun and a great opportunity to meet some new community members.

The following day Missi and Jess took 12 kids to Fargo for the day. We went to Skyzone where the kids were able to jump on trampolines, play dodgeball, basketball, attempt warp walls and an obstacle course. Afterward we went to Linden Park to enjoy the nice weather. We ate lunch at Chipotle; a percentage of our purchases went to support the organization Veterans Honor Flight. Finally, we made a quick Target run before we headed for home. It was a great group of kids and we really enjoyed spending the day together.

The amount of kids attending FLY events is increasing every month and beginning in June ten more WAFL kids will be old enough to attend FLY events. It would be really great to get some additional adult chaperones to some of the events. If you would like to attend a FLY event please let Missi

know.



WAFL Holy Faith Continued...

The month of April was a productive and busy month for the WAFL students. We had Executive Director, Chris Cannon, from the Otter Tail County Humane Society here to speak with the WAFL students about the good work the Humane Society does and to receive the donations collected over the last month. Chris was thrilled with all the donations and he was also presented with checks totaling \$356 from the noisy offering collection and the profits from selling coffee on Sunday mornings. Chris came prepared with questions for the kids and prizes. The kids enjoyed learning about the organization and hearing how their donations would be put to use. On Maundy Thursday we had nine individuals participate in First Communion with their families in attendance. Prior to that they had the opportunity to make their own chalices/cups out of pottery with Kristi Everts. Their chalices/cups were used during the ceremony and they were able to keep them as a memory of their special day.

WAFL students in 3rd-5th grade attended the nursing home to play bingo with the residents. They enjoyed helping them, playing along and calling numbers. While the older kids played bingo the younger kids delivered Easter bags to the neighbors in the area. The bags consisted of candy, bracelets, a fridge magnet, a prayer card and a bookmark. The kids enjoyed making their deliveries and even meeting some of the neighbors.

Since Easter is such a big candy holiday we practiced brushing our teeth following Easter. The kids chewed up colored tablets that turned their teeth purple and then were tasked with brushing their teeth white again.



Worship and Music



Special Music Coming!!!

5 Practices for May 18th Debt Retirement Service Choral Group::

WEDNESDAY, APRIL 30- 6:30 pm

SUNDAY, MAY 4- 9:00 am

SUNDAY, MAY 11- 9:00 am

WEDNESDAY, May 14- 6:30 pm

SUNDAY, MAY 18 - 9 am

Music is in the office. Sound files for the music are available from Cindy Peterson 701-840-0708

Stay tuned for exciting upcoming music!

Cindy Peterson, along with the talented musicians in our congregation, are creating a piece that beautifully blends all elements of our music: piano, guitar, organ, bells, and voices.

SHARE AND CARE GROUPS:

Group Three---June, July and August

Clair & Barb Prody, Lynn Melchior & Rob Baardsen, Warren & Linda Tikkanen, Diane Greenagel, Jo Duncan, Daryl & Kathleen Baardsen, Dick & Shirley Peterson, John Hodnefield, Robert Hepper, Laurie Zelinsky, Carol Nelson, Shirley & Darold Kirschman, Lynn & Holly Johnson, Kathy Neese, Doug & Doreen Stave, Ron & Kathryn Rickers, Barb & Gerry Nelson, Peter & Kristi Everts, Inez Flores, Dennis & Cherryl Pederson, Jeff Morton, Dave & LouAnn Ellingson, Jim & Mabeth Fiedler, Heidi Jorud, David & Sharon Hanson, Mike Youngblood, Sharon Worden, Tom & Cindy Peterson, Linda & Gary Morical, Mike & Kristina Fielding, Peter & Carol Boyum, & Dick & Wanda Oftedahl.



First Lutheran Men's Fellowship met Thursday, April 3, 2025 at the Shoreline with 12 members in attendance. We had 7 members help serve/clean up at the 4/9 lenten soup/supper. We took in \$106. Easter Sunday, April 20, we will serve breakfast between services. Our food shelf project has collected 249 pounds of food and \$153 in donations. On April 30 we will serve lunch to the volunteers for Beautify Battle Lake. After our next meeting on Thursday, May 1, we will walk ditches and do church clean up.



WELCA Board -- May 5th at 1:00 pm
WELCA Study leaders--May 6th at 1:00 pm
Lydia Circle --May 13th at 9:30 am
Naomi Circle --May 13th at 10:00 am
Mary Circle --May 14th at 9:30 am
Evening Circle-- May 18th at 6:30 pm



First Lutheran Art

The Inspiration for the Creation Paintings in the Narthex

By Winnie Collins

I was asked in 2007 by John Dixon, to share paintings at the church when it was built. It was expected to be finished in 2008. We were in California for the winter and when we returned, John pointed out the wall for the paintings.

I had envisioned that the creation would be appropriate for the church. After exploring several bibles of the account of creation, I decided to use the Living Bible as my reference. At this time our circle was studying a lesson on water and I felt that even though people think of the Garden of Eden as the beginning, a lot had to happen to our earth before Adam and Eve.

I felt that Day 1, 4, and 7 needed to be strong paintings depicting light, sun, moon and stars in one painting and the day of rest in the evening.

Day one, God commanded “Let there be light” and there God named light day and darkness night. Day two was when the firmament separated and there was sky and water. In Day three, land appeared to produce plants. I imagined land like islands coming up through the water with beaches. The same land masses were used in the rest of the paintings.

Day four was stars, moon and sun coming up in the background. In Day five, birds of all kinds and fish of all shapes and sizes were created. I simplified this painting but uses some of the same land.

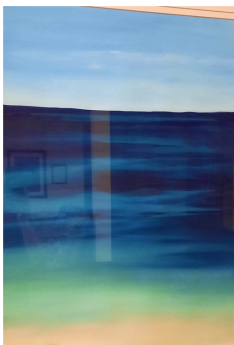
Day six was human beings, who appeared small in size on the beach appropriate to the land mass. The last day of rest has sunset with land and beach.



One



Two



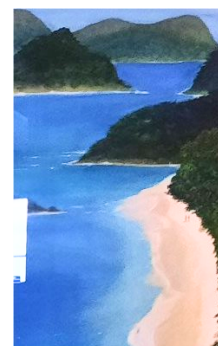
Three



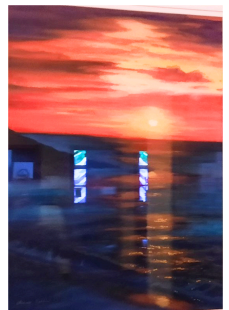
Four



Five



Six



Seven



Greetings from your Parish Nurse

Dear friends in Christ,

Have you read our mission statement recently? “Sharing Hope in Christ” is the shortened version. How do we do this as a congregation? In our last Council meeting we discussed how this might be a good initiative for us to work on in 2025.

The council has decided to come together at another time to discuss this. We could use your ideas as well. If you have any suggestions on ways to share our hope in Christ we want to hear from you. Please share your ideas with a councilmember sooner than later.

Sharing Hope in Christ is a profound and multifaceted endeavor that encompasses personal testimony, genuine living, community engagement, global impact, and creative expression. By embracing and communicating the hope found in Christ, believers can illuminate the path for others, guiding them toward the eternal promise of salvation and the boundless love of God.

Isaiah 40:31 – “But those who hope in the Lord will renew their strength; they will fly up on wings like eagles; they will run and not be tired; they will walk and not be weary.”

Let’s come together and share our hope in Christ.

God Bless you all,
Jeri Wilmore, Parish nurse/FCN

Financial Updates

March 2025 Finances: YTD Budget Tracking:

Income	\$ 24,731	Budget	\$377,225/26.17%
Credit Line	9,000		
Expenses	<u>\$ 32,541</u>	Budget	\$377,225/28.12%
Net	\$ 1,190		



Our April Noisy Offering is going towards the setting up of the playground and swing set! Thank you all for your help and donations into this important project for our youth!



We are now in the process of getting bids for the landscaping for the playground. It was decided to put it in the valley as you come in the driveway as that has less water run off.

Once the landscaping has been completed we will be looking for a "project manager" for assembling the playground and volunteers to assist with assembly.

FIRST LUTHERAN CHURCH BATTLE LAKE
Summary of Unapproved COUNCIL MINUTES 4/8/25

- Approval of March 11 Minutes: M/M Scot/Cindy. Carried.
- Financial Report: Pastor Lynn summarized the financial report for the council. We have now drawn \$22,000 of the \$50,000 line of credit established last year. The first three months of the year saw giving lower than typical. It appears to be improving in April. Pastor Lynn will conduct a Money Minute, explaining that the general fund covers the costs of keeping the building open, maintaining the lights, and supporting the staff. Without adequate funds in that account, decisions will need to be made regarding services or staff to meet our revenue.
- Staff Changes: Inez Flores has left her position as Financial Assistant. Pastor Lynn explained the plan for covering this aspect of the office management.
- Comments/Correspondence: The topic of renting part of the church building out to the Battle Lake 542 Education Foundation for its annual fundraiser has been raised, questioning the decision to serve alcohol in the church. To clarify, the church does not serve alcohol. We are renting the space to the 542 Foundation, which needs a new location due to Stub's burning down last fall and school construction. The sanctuary will not be part of the venue available for the gathering. We bear no liability for the event. Our insurance carrier has also approved allowing this event to take place in the building.
- Faith Formation Report: Missi discussed progress on the playground installation, including grant statuses, and gifts given for the project. She reported that there are three seniors graduating this year, and scholarship applications are due next week. There are 10 individuals receiving First Communion on Maundy Thursday.

OLD BUSINESS

- 2025 Initiatives: After lengthy discussion, it was decided to schedule a time for the council to work on visioning.

NEW BUSINESS

- Playground Signage: Not yet ordered
- Dates to Remember: *Burning of the Mortgage- May 18 during worship
- *Preventing Falls Forum-May 22, 11 am

Next Meeting: May 13, 2025, 6:30 pm



WELCA'S ANNUAL "NO BAKE" Fundraiser

May/June 2025

The "No Bake" Fundraiser has assisted our church WELCA
(Women of Evangelical Lutheran Church of America)
to fund projects throughout the year.

Some of the WELCA projects or donations were assigned to:

Battle Lake Food Shelf, Battle Lake School, Churches United, Red River Valley Hospice,
Lake Region Cancer Foundation, Morning Watch, Someplace Safe Crisis Center,
Personal Care Kits, Infant Kits, School Kits, and the ELCA Disaster Fund for local
disasters.

Please make a donation to support WELCA projects.

Checks should be made out to WELCA. Donations can be dropped off at the church
office, given to a circle chair member, or mailed to:

Linda Manikowske, WELCA Treasurer
23370 Garland Lane
Battle Lake, MN 56515

Thank you for your support of WELCA

Everyone is welcome to help with any of our projects.

Any questions about WELCA, pick up our booklet in the church office, or contact
Nancy Quam at 218-371-0576,
or contact any WELCA member.

##

May 2025

April '25							June '25							July '25						
S	M	T	W	T	F	S	S	M	T	W	T	F	S	S	M	T	W	T	F	S
	1	2	3	4	5		1	2	3	4	5	6	7		6	7	8	9	10	11
6	7	8	9	10	11	12	8	9	10	11	12	13	14	15	6	7	8	9	10	11
13	14	15	16	17	18	19	15	16	17	18	19	20	21	22	13	14	15	16	17	18
20	21	22	23	24	25	26	22	23	24	25	26	27	28	20	21	22	23	24	25	26
27	28	29	30				29	30						27	28	29	30	31		

Sunday	Monday	Tuesday	Wednesday	Thursday	Friday	Saturday
27 10 am Worship/Communion 11 am Fellowship 11:15 am Visioning w/Council	28 5 Cinco de Mayo 9 am Quilters 1 pm WELCA Bd.	29 6 1 pm WELCA Study 2 pm Song Select 3 pm Worship & Music	30 7 3:15 pm WAFL 5:15 pm Bells 5:30 pm Confirmation 530 pm Handy Helpers	1 8 am TOPS 8:30 am Men's Fellowship with clean up	2 9 5 pm - 9 pm Women's Retreat	3 9 am to 12 pm Church Cleaning
4 10 am Worship/Communion 11 am Fellowship 11:15 am Visioning w/Council	5 9 am Quilters 2:30 pm Finance	6 1 pm WELCA Study 2 pm Song Select 3 pm Worship & Music	7 3:15 pm WAFL 5:15 pm Bells 5:30 pm Confirmation 530 pm Handy Helpers	8 8 am TOPS	9 5 pm - 9 pm Women's Retreat	10
11 Mother's Day 10 am Worship Senior Reconition 11 am Fellowship with D. Brooks--Churches United Baccaleurette	12 9 am Quilters 2:30 pm Finance	13 BLOOD DRIVE 9:30 am Lydia Circle 10 am Naomi Circle 5:30 pm Faith Formation 630 pm Council	14 9:30 am Mary Circle 3:15 pm WAFL 5:15 pm Bells 5:30 pm Confirmation 5:30 pm Handy Helpers	15 8 am TOPS 9am Sort's Of Norway 5:30 pm 2orMore @ABC	16 7 pm-7 am FLY lock in	17 Armed Forces Day 10 am Lakes Ave. Apt Communion
18 CELEBRATION DAY 10 am Worship/Bishop Bill 11 am Fellowship 6:30 pm Evening Circle	19 9 am Quilters 10:30 am Staff Newsletter articles due	20 7 pm Climate Awareness	21 5:15 pm Bells	22 8 am TOPS 11 am Fall Prevention 4:30 pm Mutual Ministry	23 Graduation	24 Ninja Anywhere
25 10 am Worship/Communion 11 am Fellowship/Potluck	26 Memorial Day 9 am Quilters Office Closed	27 FLCamp Starts	28 10 am Good Sam 5:15 pm Bells	29 8 am TOPS 1 pm Revelation Study	30 Synod Assembly	31 Synod Assembly
1	2	Notes 8 PM Fridays AA & Al-Anon @ Sr. Ctr. 7:30 pm Wednesdays NA @ Sr. Ctr. May 12th- 15th, Pastor out of office for Education May 1st - May 3rd, Pastor out for Education				

[Calendar Template by Vertex42.com](https://www.vertex42.com/Calendar/Calendar-Template.php)

First Lutheran Church
505 Holdt St. West
Battle Lake MN 56515
218-864-5686
www.blfirstlutheran.org



Address Service Requested
Newsletter

Sunday Worship 10 AM

Communion 1st & 4th Sundays

Coffee/Fellowship 11 AM following service

Online worship @ Youtube-First Lutheran Church Battle Lake and Facebook



FIRST LUTHERAN CHURCH
BATTLE LAKE

First Lutheran Church Staff

Pastor: Pastor Lynn Melchior : pastorlynn@blfirstlutheran.org

Office Secretary: Laurie Hanson-Zelinsky: office@blfirstlutheran.org

Parish Nurse: Jeri Wilmore: parishnurse@blfirstlutheran.org

Faith Formation: Missi Abfalter: waf1@blfirstlutheran.org

Website: www.blfirstlutheran.org