

Rockwall-Heath High School



Mighty Hawk Band
Organizational Guidelines
2024-2025

Mission, Vision, and Goals

Mission

The Mission of the Rockwall-Heath Mighty Hawk Band is to provide a comprehensive music education for all students, equipping them with the tools needed to develop a lifelong appreciation for music while developing personal character and preparing them to be successful young adults by embracing our core values of:

- Dedication
- Integrity
- Excellence
- Community

Vision

Our student musicians will learn determination and commitment through musical performance as a means of developing character, academic excellence, musical excellence, and physical fitness while serving as ambassadors of the program and our school to the community.

Goals

- Individual performers will develop their performance skills including tone, pitch, rhythmic accuracy, technical ability, foundations of visual performance to maximize their capabilities
- The Rockwall-Heath Mighty Hawk Band will serve as a source of community pride through individual and group achievement in TMEA Activities, UIL Activities, and other musical performance opportunities.
- Students in the Mighty Hawk Band will work to make consistent academic progress with a 100% graduation rate from all members.
- The Mighty Hawk Band will commit to 20 hours of community service as an organization by way of supporting the Elementary and Middle School campuses within the Rockwall-Heath Learning Community, and community engagement via public performances within the larger community of Heath, TX.

The RHHS Mighty Hawk Band falls under the jurisdiction of Rockwall ISD Student services as a curricular organization and is subject to the [Rockwall ISD Policies and Procedures](#), [Rockwall ISD Student Handbook and Code of Conduct](#), [Rockwall ISD Fine Arts Handbook](#) and these Organizational Guidelines.

Program Contact Information

Position	Name	Phone	Email Address
Director of Bands	Christopher Loyd	972-771-7339 Ext 2674	christopher.loyd@rockwallisd.org
Associate Director	Trevor Kay	972-772-7224 Ext 2676	trevor.kay@rockwallisd.org
Assistant Director	Kelley Powell	972-771-7339 Ext 2675	kelley.powell@rockwallisd.org
9th Grade Director	Anissa Macias		anissa.macias@rockwallisd.org
Director of Percussion	Rod Kosterman	972-771-7339 Ext 6454	kenneth.kosterman@rockwallisd.org
9th Grade Percussion	Bastian Wood		bastian.wood@rockwallisd.org
Color Guard Director	Maegan Benavidez		Maegan.benavidez@rockwallisd.org

We encourage parent participation in the development of our student musicians. We ask that parents follow the [UIL Parent Handbook](#) regarding the content of parent/director conferences.

Appropriate concerns to discuss with a director:

1. The mental and physical well being of your child.
2. Ways your child can improve their performance as a student musician.
3. Concerns about your child's behavior or academic performance in the music classroom.

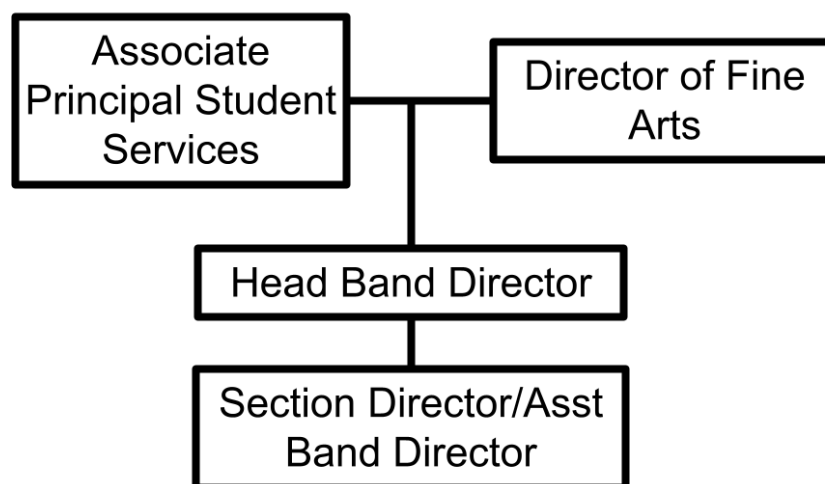
Sometimes it can be difficult for students to accept that they are not performing to their desired level, particularly when in direct competition with their peers. Directors make decisions based on what they believe is in the best interest of The Mighty Hawk Band. As you can see from the list above, certain things can and should be discussed with your child's director. Other things, such as those listed next, must be left to the discretion of the director.

Issues NOT appropriate for discussion with your child's director:

1. The position in the band program your student has earned.
2. Music selection or marching suggestions.
3. Any situation involving another band student that does not directly and negatively impact your personal student.

Parent-Student Concerns

We welcome parental involvement in the development of student musicians, and acknowledge that from time to time parents may wish to discuss concerns with the appropriate Rockwall ISD personnel. Please follow the diagram below so that we can best address any questions or concerns you may have. We respectfully request that you begin your inquiry by contacting the staff member with the most knowledge of the situation (i.e. the Teacher of Record for your student's band class.)



Mighty Hawk Band Communication Methods

The Mighty Hawk Band Staff uses a variety of platforms to communicate with students and parents. We highly encourage both students, and parents to actively monitor these platforms to stay informed about rehearsal and performance activities. Utilized platforms include:

- Presto Assistant Email
- S'more Newsletters
- Mighty Hawk Band Website (www.mightyhawkband.org)



Rockwall
INDEPENDENT SCHOOL DISTRICT

- RHHS Mighty Hawk Band Parents Facebook Page
- Remind 101

Grading Policy & Eligibility

The Mighty Hawk Band Program will grade students based on their consistent contribution to the organization, and measurable progress toward individual and organizational goals.

Formative Assessments

Formative Assessments are graded components of your students' band course that measure student progress toward group and individual goals or can be utilized to measure a student's contribution to the organization's efforts. Examples would include:

- Attendance at Rehearsal Activities
- Reporting to Rehearsals with All Necessary Supplies
- Individual and Small Group Performance Assessments
- Music Theory or Instrumental Pedagogy Assessments

Summative Assessments

Summative assessments will be performance based assessments and must be performed for a member of the Mighty Hawk Band Staff. A rubric will be utilized to share specific feedback for individual improvement. Examples would include:

- Attendance at performance activities.
- Pass-Off Assignments of Required Performance Literature
- Skill Based Performance Assessments

Makeup/Retake Policy

Students will have the opportunity to repeat their summative and formative assessments until they are satisfied with their grade. Assessments utilized for ensemble placement, part assignments, chair orders etc. may be repeated for an improved grade, however subsequent attempts will not be considered for such placements. Any student missing an assessment will complete the assessment upon their return. Absences from performance activities must be made up by completing an alternate assignment. Alternate assignments for unexcused absences will be accepted for a maximum grade of a 70.

EXCUSED ABSENCES

The following situations constitute an excused absence:

- Personal Illness--Requires a note from parent, email preferred.
- Death in the family--Requires a note from parent, email preferred.
- Extreme family emergency--Requires documentation from a parent.
- Emergency doctor appointment--Requires documentation from a parent.
- Any other circumstances that would be considered to be excused according to Rockwall ISD Attendance Policies.

PLEASE MARK ALL BAND REHEARSALS AND PERFORMANCES ON YOUR PERSONAL CALENDAR TO AVOID ANY CONFLICTS. During Marching Season, it is recommended that you schedule appointments around the marching band performance and after school rehearsal schedule.

Note: All absences require a note. Absences not covered by the above-mentioned circumstances will be excused at the sole discretion of the Mighty Hawk Band Staff. Alternate assignments will be given for excused absences from performances, or other graded components of your student's band class.

UNEXCUSED ABSENCES

Unexcused absences from rehearsal will result in consequences up to and including:

- Lowered grades in your band class.
- Exclusion from performances (football games, marching contests, concerts, etc.)
- Removal from the marching show.
- Placement in a lower concert ensemble.

Unexcused absences from performances will result in consequences up to and including:

- Lowered grade in your band class.
- Exclusion from consideration for student leadership, advanced ensembles, etc.
- Removal from the marching show.
- Removal from the Mighty Hawk Band Program.

TARDIES

Members should arrive no later than 15 minutes before the designated time for before and after school rehearsals. Get there in time to get your instrument, music, stands, etc. and get in your seat, ready to play at the appointed time. Keep the following items in mind concerning tardiness:

- Anyone who arrives later than the scheduled time and is not in their assigned place is tardy.
- Anyone arriving more than 20 minutes late will have their tardiness treated as an unexcused absence. Please see the above guidelines for unexcused absences.

****TUTORING AND WORK SCHEDULES DO NOT CONSTITUTE AN EXCUSED ABSENCE.****

*****IMPORTANT NOTE REGARDING TUTORIALS*****

All subjects at Rockwall-Heath HS offer morning and afternoon tutorials. The marching band practice schedule allows students to attend the afternoon tutorials most days of the week, and avoid conflict with the practice schedule on most days. RHHS faculty work in PLC groups, and students may attend tutorials with another member of the PLC group if their classroom teacher is not available on any given day. All students are expected to arrange to attend tutorials at a time that does not conflict with the marching band rehearsal schedule. In the event that it becomes necessary to attend tutoring during a before or after school rehearsal, it is the responsibility of the student to secure permission from the band staff prior to scheduled rehearsal. Failure to follow procedure will result in an unexcused absence from the rehearsal.

Eligibility

Academic Eligibility: All Rockwall ISD competitive activities adhere to [UIL Standards](#) & [FM \(LEGAL & LOCAL\)](#) for determining eligibility. Students that are academically ineligible will be expected to attend rehearsal activities, **however they will not be allowed to participate in competitive activities.**

Behavioral Eligibility: Students that are currently serving a suspension (ISS, OSS, or DAEP) for violation of the Rockwall ISD Handbook or Code of Conduct are ineligible for competitive activities. A ISS suspension is considered served at 3:50 PM on the final day of the suspension. An OSS Suspension is considered served at 7:00 the day following suspension. A director may choose not to allow a student to participate in a competition or other performance for violation of organizational expectations.

Program Expectations

The Rockwall ISD Student Code of Conduct and Handbook applies to all student activities regardless of location. As a student musician, you are a representative of Rockwall ISD, Rockwall-Heath High School, the Mighty Hawk Band Program, and the community of Heath, Texas. Being a student musician provides you with opportunities and privileges, but also requires additional responsibilities.

Members of the Mighty Hawk Band will be expected to adhere to the following:

- All students are expected to conduct themselves properly at all times. Display profanity, PDA, temper, flagrant violation of rules, etc., will not be tolerated.
- Students will follow any director's or chaperone's instructions at all times.
- Students will be in their assigned rehearsal area ready to work at the designated rehearsal start time.
- Students will bring equipment including music, pencil, instrument, and all supplies to rehearsals daily.
- Students will not bring food, drinks, candy or gum in the band hall. Water in a sealed container is acceptable.
- Students will not play on equipment they do not own or have permission from a director to use.
- Students will not touch, handle, borrow, or use anyone else's instrument, uniform, or personal belongings.
- Students should ask for permission to speak by raising your hand and waiting to be acknowledged. All rehearsals are expected to be quiet so that our time will be utilized efficiently.
- When allowed in the band hall either before or after school, students will not disturb any rehearsal in progress.
- Band facilities including (but not limited to) Practice Rooms, Ensemble Rooms, Storage Rooms, Music Library, etc. are considered off-limits unless a student has received permission from a member of the Mighty Hawk Band staff to utilize the facilities.
- Students who are not enrolled in band are not permitted in band facilities. This includes former band members who are no longer current students.
- Students will not enter any directors' offices without permission.
- Students should knock and wait to be acknowledged before entering an office.
- Students will not deface or mark on music stands, walls, doors, equipment, etc.
- Students should keep their equipment in the designated locker, and keep their storage area "clean and neat" in appearance. Students who demonstrate great difficulty with this may lose the privilege of having a storage area in the band hall.

- Students will utilize a provided storage slot for instrument cases during rehearsals.
- Any behavior, which is not representative of good citizenship, as perceived by the band staff, may result in the student's dismissal from the activity at hand as well as the band program. This also applies to the actions of student leaders in both public and private events. Students are expected to comply with the RISD Student Code of Conduct at all times.

Cell Phone Policy

Students will not use their cell phones during rehearsal or performances (including football games.) Students will be provided instructions regarding safe storage of cell phones during rehearsals and performances. Students who cannot make responsible choices with their cell phone usage will be required to place their phone in the possession of a member of the Mighty Hawk Band staff for the remainder of the rehearsal or performance. Cell phones will be returned immediately at the conclusion of the rehearsal or performance.

Program Removal

The Mighty Hawk Band is a competitive organization that relies on the active participation of all members for its overall success. Failure to adhere to Organizational Guidelines, the Fine Arts Handbook, or school rules may result in removal from the organization. Removal of a student due to significant failures to uphold expectations will be left to the discretion of the band staff.

Academic Removal

Any student that is academically ineligible for any grading term will be expected to attend tutorials for the failed class. Any student that is ineligible for multiple grading periods may be subject to consequences within the band program. Consequences could include (but are not limited to) reassignment of parts, exclusion from performance, placement in a different band class, or removal from the band program.

Disciplinary Removal

A student that exhibits significant behavioral concerns, or fails to serve as an acceptable representative in the greater community is subject to disciplinary removal from the Mighty Hawk Band. Program removal is at the sole discretion of the Director of Bands provided these guidelines, the Rockwall ISD Fine Arts Handbook, and Rockwall ISD policies and procedures have been followed.

1. **1st Offense: Parent/Guardian Notification** - A member of the band staff will have a conference with the student musician that includes the violation, and the expectations moving forward. The staff member will contact the parent and provide a summary of that meeting.
2. **2nd Offense: Parent Conference** - The band staff (including the Director of Bands) will meet with the parent and student to discuss specific (or patterns of) behavior and develop a plan that outlines consequences for continued violations.
3. **3rd Offense: Program Removal** - The Director of Bands will inform the parent of continued violations and that a schedule change will be initiated to remove the student from the Mighty Hawk Band.

Any student that engages in behavior that rises to the level of a Class A misdemeanor or Felony, Out of School Suspension, or District Alternative Education Placement may be removed from the Mighty Hawk Band.

SCHOOL-OWNED/ISSUED INSTRUMENTS

The Rockwall Independent School District will provide a limited number of instruments for student use. These instruments include such highly expensive instruments as the Bassoon, Oboe, Tenor Saxophone, Baritone Saxophone, French Horn, Euphonium, Tuba, and general Percussion equipment. This equipment is generally purchased by the school district for student use because of its extremely high value. **Thus, all school owned equipment must be handled with optimum care.** Students failing to care for, or take care of their school issued instrument will lose the privilege to use such instruments. The following is a list of general procedures for school owned instruments:

- The Rockwall Independent School District does not provide insurance for individually or school owned equipment. It is required of all students utilizing school owned instruments to provide insurance coverage for the said instrument. **Students will be held responsible for school owned instruments issued to them. This responsibility will include fire, theft, accidental damage, abuse and general maintenance needed not caused by normal use.**



- Each instrument will be issued in good playing condition. Each issued instrument will be checked and cleaned by a music company prior to issue.
- The band member is financially responsible for all equipment and/or materials checked out to him or her.
- All equipment and materials must be kept in their proper storage location when not in use.
- A district wide Instrument Usage Fee is required of every student using a school owned instrument. The fee is \$100 per instrument (\$200 for marching and concert instrument combined.)

Special Note

School owned instruments are not to be treated as “free” instruments. Basic supplies must still be purchased and repairs must still be made just like personally owned instruments. Please strive to treat these instruments as if they were your own. Most school owned instruments exceed a \$2,000.00 value. Students on a school owned instrument may be asked to switch to another school owned instrument to help with overall band instrumentation. **Since the expense of purchasing, leasing or renting is waived, students using school owned instruments are strongly encouraged to participate in the private lesson program.**

PERFORMING ENSEMBLES (CONCERT SEASON)

Students in the Mighty Hawk Band program will be placed in a concert ensemble by audition. Auditions will take place prior to the beginning of EACH new semester. In addition to performing audition material, factors that will affect ensemble placement could include (but are not limited to): Attendance Issues, Behavioral Issue, Failure to meet course objectives, Academic Eligibility Issues, etc.

Wind Ensemble Requirements

- Participation in marching band
- Preparation of All-Region music during the fall, with tests assigned periodically throughout the first semester
- Audition for All-Region Band
- Participation in school musical performances
- Performance of a Class I Solo and Class I Ensemble at UIL Solo & Ensemble Contest
- Performance of concert music as assigned by the director
- Attendance at section rehearsals and full band rehearsals before or after school

Wind Symphony Requirements

- Participation in marching band
- Preparation of All-Region music during the fall, with tests assigned periodically throughout the first semester
- Audition for All-Region Band
- Performance of a Class I solo and a Class I ensemble at UIL Solo & Ensemble Contest
- Performance of concert music as assigned by the director
- Attendance at section rehearsals and full band rehearsals before or after school

Symphonic Band Requirements

- Participation in the marching band
- Preparation of All-Region music during the fall, with tests assigned periodically throughout the first semester
- Audition for All-Region Band
- Remedial instruction on new instrument, or continuous study
- Performance at UIL Solo and Ensemble
- Performance of concert music as assigned by the director
- Attendance at section rehearsals and full band rehearsals before or after school

Concert Band Requirements

- Participation in the marching band
- Remedial instruction on new instrument, or continuous study
- Performance at UIL Solo and Ensemble
- Performance of concert music as assigned by the director.
- Attendance at section rehearsals and/or full band rehearsals before or after school

Jazz Band Requirements

- Performance as musical ambassadors of the school
- Performance of repertoire as assigned by the director
- Audition for TMEA All-Region Jazz Band (Jazz I Required, Jazz II Encouraged)
- Performance at various Jazz Festivals
- Gain basic knowledge of music theory, and improvisation skills

Color Guard Requirements

- Development of individual basics including flag, rifle and saber skills
- Development of basic movement skills, including basic dance
- Development of ensemble skills including timing of flags and body movement
- Performance of competition choreography by memory

- Participation in all marching band activities in the fall semester and winter guard activities in the spring semester
- Students who are currently members of the band must remain a member of the band in order to participate in Color Guard

Percussion Ensembles

- Development of Percussion specific technique and performance concepts.
- Preparation of TMEA All-Region Audition Materials
- Preparation for UIL Solo and Ensemble
- Preparation and performance of Indoor Drumline events.
- Performance of concert music as assigned by the director
- Attendance at section rehearsals and/or full band rehearsals before or after school

Rehearsal activities and performances outside of the school day will be scheduled a minimum of two weeks in advance of the event. Notification of rehearsal activities and performances will be communicated by your student's assigned staff member, and will be delivered via email, Smore newsletter, and/or written communication from the MHB staff.

Concurrent Enrollment

Per the Rockwall ISD Academic Planning Guide, Band is a year long course. Mid-year schedule changes will be made at the discretion of the MHB staff. Band students are required to be concurrently enrolled in their Concert Ensemble course, and the corresponding Instrumental Ensemble course (if applicable.) Students must be correctly enrolled in their band courses in order to be eligible to participate in extended musical studies affiliated with the Mighty Hawk Band program (Jazz Band, Secondary Instrument placements, etc.) Scheduling issues will be handled on a case by case basis, solely at the discretion of the MHB staff.

PRIVATE LESSONS

We are fortunate to be able to offer our students a fully-staffed faculty from which private lessons are available. Each faculty member is approved by the Rockwall ISD and most are performers in local orchestras and chamber groups. This program is designed to assist students one-on-one with a specialist on his/her instrument. It is a

convenient way for students to get extra help because many teachers schedule lessons during band class or after school. Not only is it convenient, but is offered at an inexpensive rate of \$25.00 per 30 minute lesson. Private study is strongly recommended for each student. Private lessons can help a student progress twice as fast as group instruction, and help the student be more successful in concert band activities, region band auditions, and solo-ensemble contests. If you are interested in studying privately, see your director as soon as possible. (Please read the private lesson contract for more information.)

Marching Band Positions

Varsity Performers

Students who earn a position in the contest drill will carry the designation of varsity performer. A Varsity performer is a student who:

- Successfully completes the memorization requirement for music by the appropriate time.
- Demonstrates high quality marching skills.
- Is punctual in report times.
- Is present at all rehearsals and performances.
- Maintains academic eligibility.

Varsity performers will be assigned positions in the competition show drill. Should a varsity performer sustain an injury, lose eligibility, or fail to fulfill their obligations to the Mighty Hawk Band, the band staff reserves the right to replace any varsity performer with an acceptable member of the J.V. Performer roster.

J.V. Performers

Less experienced students who are not ready to perform to the level required of a varsity performer will be designated as a J.V. Performer. J.V. performers serve a vital role in the marching band. Responsibilities Include:

- Participation in all fundamentals of movement
- Demonstrate increased proficiency in marching technique over the course of the season.
- Learning an assigned drill position as an alternate performer.
- Visual logistical support during competition show performances.

Students who demonstrate difficulty in maintaining academic eligibility over the course of the previous school year may be designated as an J.V. performer for the following marching season.

Marching Band Music Pass-offs

Each student will be responsible for demonstrating proficiency on all required musical material by performing memorized pass-offs on marching band music. Pass-offs will be graded on a Pass/Fail basis, and students will be expected to make multiple attempts in order to demonstrate proficiency with the goal being 100% success rate for the Mighty Hawk Band. Pass-Offs will be performed live during class, before and after school, and

any other time designated by the Mighty Hawk Band staff. Students will be notified well in advance of Pass-Off due dates. **Students who fail to meet their pass-off requirements will not be allowed to perform on the field. Students designated as primary performers who fail to meet pass-off requirements will be replaced with a J.V. performer at the discretion of the Mighty Hawk Band staff.**

Marching Band Rehearsal Schedule

The official MHB rehearsal schedule will be made available to parents via the official band calendar (www.mightyhawkband.org/calendar) and via Smore Newsletter. Students and parents are highly encouraged to subscribe to the official band calendar to remain informed of any schedule changes that become necessary. In the event of a necessary schedule change, every effort will be made by the band staff to notify parents of schedule changes in a timely fashion. Notifications will be made via Charms email, and Remind messaging.

Band Fees

All students participating in the Mighty Hawk Band will be assessed annual activity fees. These fees are utilized to offset the costs associated with the band program that are not supplied by Rockwall ISD. Fees will be assessed at Registration, and payments will be made in monthly installments until the balance is paid in full. Fees that are not paid in full by the end of the current school year will be carried forward into subsequent years, and must be paid in full prior to your student's graduation date. It is our sincere belief that all students deserve a high-quality music education. No student will be denied participation due to financial hardship. Financial aid is available through the MHB Band Boosters, and families may apply at the time of registration.

Booster Club

The purpose of the Rockwall-Heath High School Band Booster Club shall be to promote, support, and assist in the betterment of the Rockwall-Heath Band. This club shall:

- Promote the involvement of parents in band-oriented activities.
- Provide supplemental funds for needs of the band which are not budgeted or paid for by the school or district.
- Cooperate with the Rockwall-Heath High School band directors, administrators, and staff to promote the band and the education of band students.

All parents, guardians, and friends of the band are encouraged to participate in the Rockwall-Heath Band activities. Remember, behind every great band is a great Booster organization! If you have questions about the MHB Booster organization, our booster president may be contacted via email (rhsmightyhawkband.org)

Fundraising

In order to facilitate the band's mission financially, the MHB Boosters organize several fundraising efforts throughout the academic year. All proceeds directly benefit the Mighty Hawk Band. Although participation is not required of any individual student, it is our hope that students and parents will see the benefit in fundraising activities and assist our booster organization in these efforts. Questions regarding the RISD policy on fundraising activities may be referred to the Rockwall ISD Website.

Social Functions

Mighty Hawk Band social functions (including summer band social events, parties, band banquets, etc.) are only open to current band members and parents. Any exceptions must be approved by the Director of Bands prior to the start of the event. Unapproved guests will be asked to leave the social function. Students who have been removed from the program (including students who voluntarily removed themselves) are not eligible to attend any Mighty Hawk Band function. All students will be required to adhere to the RISD Student Code of Conduct when attending MHB social functions. Violations of the Code of Conduct will be addressed at the school after the social function. *All determinations of organizational guideline violations are subject to the discretion of the Mighty Hawk Band staff. Violations will be handled on a case by case basis. Major violations will require a parent conference before final resolution.

Letter Jackets

In order to be eligible to receive a letter jacket from the band program a student must qualify by earning at least 100 “points” in one of two tracks: Instrumentalist or Color Guard. Each member may only earn one letter jacket. Points are to be awarded as follows:

Event Title (Points Awarded)	Year(s) Completed	Points Awarded
1st Year Participation (10 Pts.)		
2nd Year Participation (15 Pts.)		
3rd Year Participation (25 Pts.)		
4th Year Participation (50 pts.)		
All-Region Band Participation (20 pts. per year)		
UIL State Solo Contest Participant (20 Per Year)		
All State Band Participant (100 pts.)		
Color Guard-Assist w/Middle School Cadet Guard (20 pts. per year)		
NTCA Solo Competition Participant (20 pts. per year)		
	Total Points:	

Acknowledgments

I have reviewed the above information with my student and commit to adhering to Rockwall ISD policy, the Rockwall ISD Student Services Handbook and these Organizational Guidelines. I understand that if I need additional assistance, I should contact a member of the band staff prior to contacting a member of Rockwall-Heath Administration or Rockwall ISD Administration..

Student Name

Student Signature

Parent/Guardian Signature

Director Signature

Date Signed