



# JTLC H Series

High Speed Fiber Laser Cutting Machine

[en.cn-laser.com](http://en.cn-laser.com)

## Company Culture



### MISSION

Enhancing efficiency & productivity with laser technology



### VALUES

Deliver superior quality through excellent service



### VISION

To become the leading brand in laser machinery, trusted for quality and innovation

## Company Profile



**2002**  
Founded In



**4**  
Research and Development Centers



**3**  
Manufacturing Bases



**38000+**  
Corporate Clients



**50,000+**  
Machines



**200,000+m<sup>2</sup>**  
Plant Area

Jater laser is the leading company in China with full in-house production capabilities across the entire laser equipment value chain. We specialize in research and development, manufacturing, sales, services and integrated application of automated laser solutions.

With a global vision and offices across Asia, Oceania, North America, South America and Europe, we are committed to advancing intelligent manufacturing through continuous innovation and customer-centric services.

# JT H Series

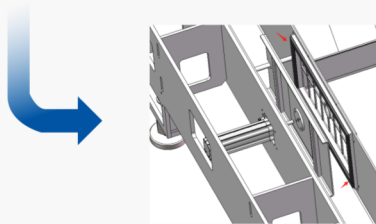
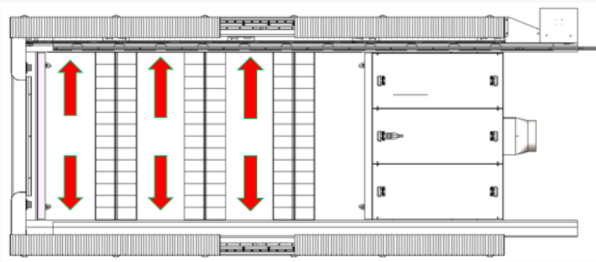
## High Speed Laser Cutting Machine



### Technical Parameters

Technical Parameters	JTLC3216H	JTLC4221H	JTLC6321H
Power	3000W,6000W	3000W,6000W	3000W,6000W
Processing Area (L*W)	3200mm*1590mm	4200mm*2090mm	6300mm*2090mm
X/Y-Axis Travel	X:1590mm/ Y:3200mm	X:2090mm/ Y:4200mm	X:2090mm/ Y:6300mm
X/Y-Axis Positioning Accuracy	±0.03mm/m	±0.03mm/m	±0.03mm/m
X/Y-Axis Repositioning Accuracy	±0.03mm	±0.03mm	±0.03mm
Maximum Speed of the Machine	180m/min	180m/min	180m/min
X/Y Axis Maximum Positioning Speed	130m/min	130m/min	130m/min
X/Y Axis Maximum Acceleration	2.0G	2.0G	2.0G
Maximum Acceleration of the Machine	2.8G	2.8G	2.8G
Maximum Low-pass	8HZ	8HZ	8HZ
Dimensions (L*W*H)	9824*2866*2417 mm	11854*3366*2416 mm	Available On Request

\* The appearance, technical parameters and function descriptions of the machine displayed on this page are for reference only. The appearance and technical parameters of the actual factory equipment shall prevail.

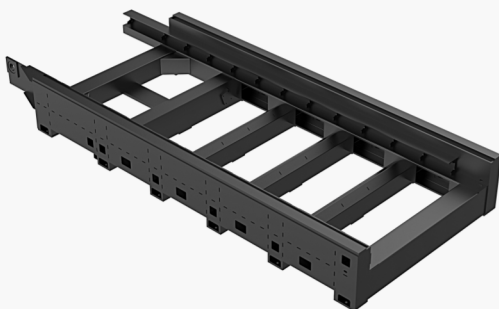


### Partitioned Dust Removal

- Safe and low pollution partitioned dust removal system with no pressure leakage, large dust suction flow and an efficiency rate of more than 95%.

### Power Redundancy + High-precision Transmission Configuration

- Power redundancy technology and high-precision transmission ensure long term high speed stable operation.
- Equipped with high-performance and high-precision gears, racks, guide rails, customized reducers and other accessories.

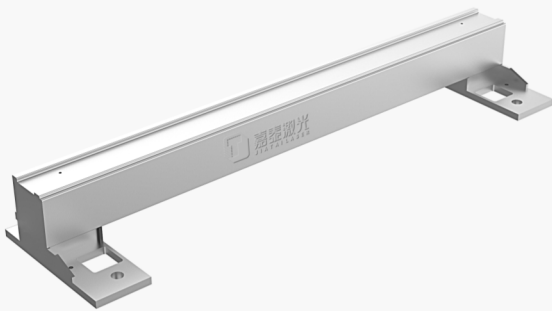


### Heavy-duty Plate Welded Construction Featuring Low Center of Gravity Design

- The base made of heavy-duty steel plate provides a solid foundation for high power machines with heavy load.
- Welded structure with high rigidity and vibration resistance always ensures stable operation.
- The low-center of gravity and high-mass design minimizes vibration interference, ensuring stable and precise machining.

## High-Speed Bus Control System

- Intelligent and comprehensive bus control system for smooth cutting.
- User friendly interface offers stability and reliability through easy deployment and debugging.
- Optimized algorithm enhances high running stability in high-speed cutting.
- Future ready for Smart Factory with advanced digital capabilities.



## Lightweight, High-strength Aluminium Beams

- Beams are made of the premium 6 series aluminium alloy which are rigid and light weight.
- Reduced weight enhances smooth running of the parts and dynamic response.
- High-strength beam guarantees high efficiency and low energy consumption.
- Low maintenance costs are achieved by reducing the inertia load.

## Intelligent BLT Series Cutting Heads

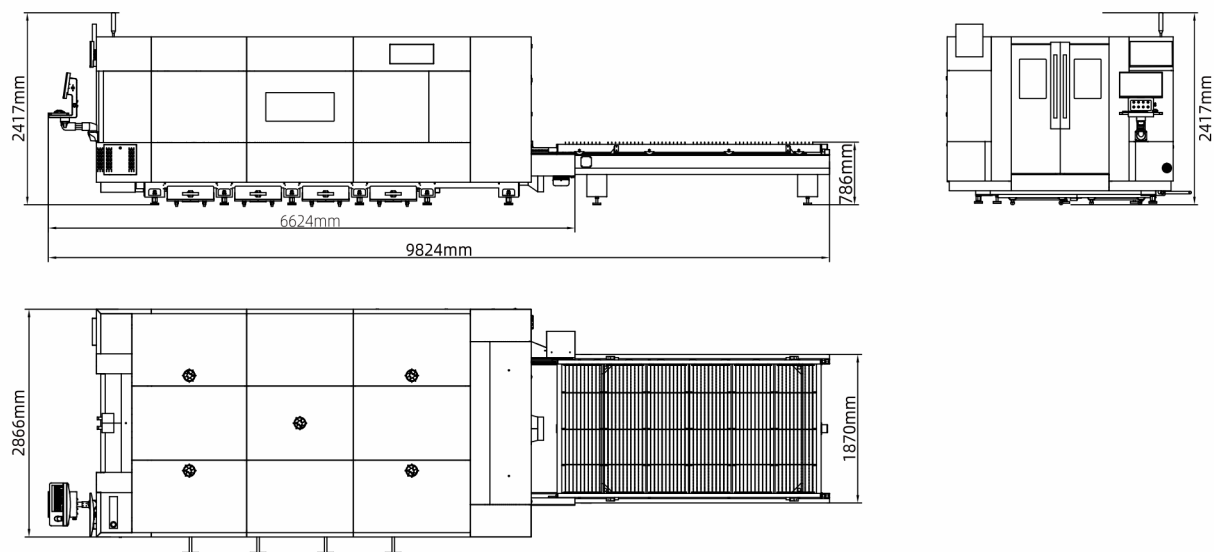
- Multi-sensor and modular design.
- Fast and accurate focusing, closed-loop control of air pressure.
- Full digital management for four key cutting parameters.
- Real-time response for accurate adjustment.



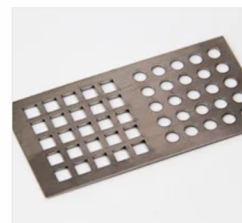
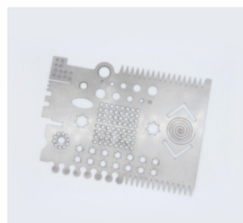
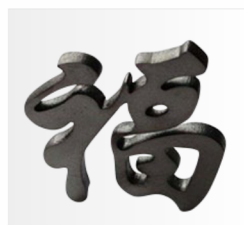
## Machine Measurements

\*10mm margin of error on measurements

\*Model: JTLC3216H (9824mm\*2866mm\*2417mm)

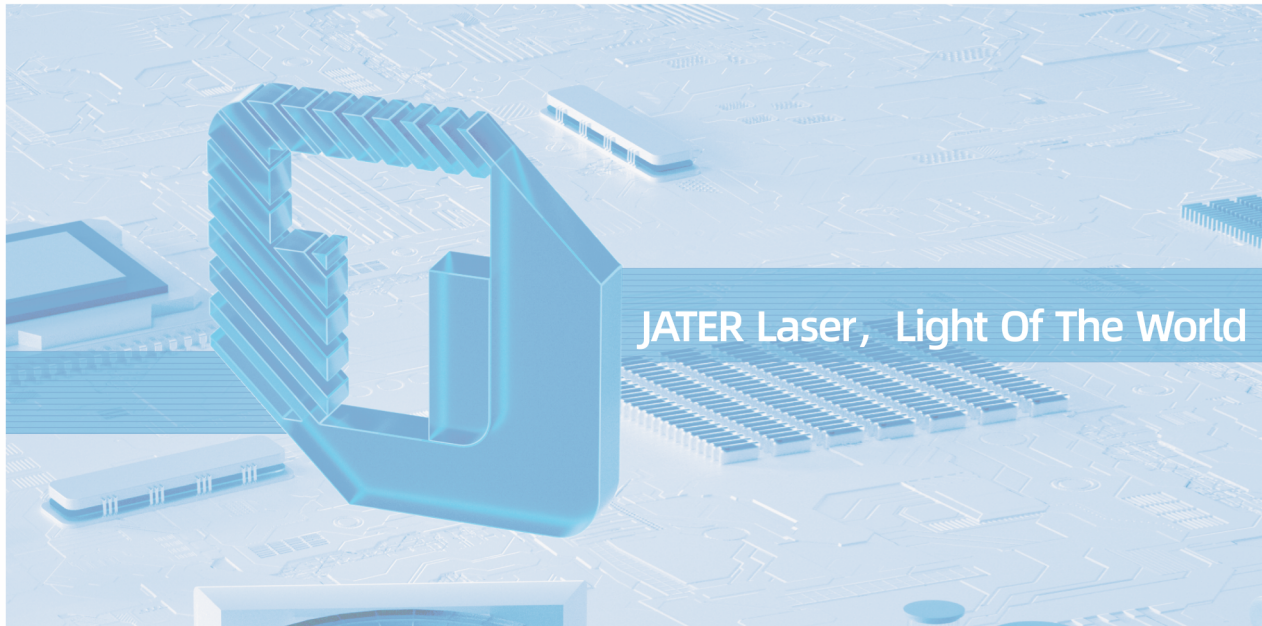


## Cutting Samples



## Cutting Capacity

Material	Gas	1mm	2mm	3mm	4mm	5mm	6mm	8mm	10mm	12mm	14mm	16mm	18mm	20mm	25mm
Carbon steel	Air	48-60	23-30	16-20	-	-	-								
Power:3000W		Speed [m/min]													
Carbon steel	Oxygen	-	4-5	3.5-4	3.3-3.6	3-3.3	2.6-3	1.8-2.2	1.4-1.7	1.1-1.3	0.8-1.1	0.6-0.8	-	0.3-0.5	-
Stainless steel	Air	55-63	27-33	18-23	9-11	5-6.2	3.5-4.7	2-2.5	1.3-1.6	0.75-0.95					
Carbon steel	Air	60-70	40-50	25-30	18-23	14-17.5	8-10								
Power:6000W		Speed [m/min]													
Carbon steel	Oxygen	-	-	-	-	-	2.7-3.2	2.3-2.5	-	1.8-2	-	1.1-1.3	-	0.8-1	0.4-0.65
Stainless steel	Air	60-90	50-60	32-40	19-22	12-15	9-11	5.5-6.5	3.3-4	2-2.5	-	1.2-1.5	0.7-1	0.6-0.9	-



### 24/7 Technical Support

Our commitment to customer-centric services: We are always ready to respond promptly and keep your operations running smoothly.



### Pre-sales Professional Consultation

Free consultation on various production process solutions, such as technical advice, cutting samples, equipment selection and equipment customization.



### Installation and Calibration

We endeavor to provide the shortest turnaround possible on delivery, installation and calibration with highly experienced technician on site.



### After-sales Technical Training

Free small group technical training for our customers including operating principles, equipment structure, workflow, equipment maintenance, laser safety training, operation procedures and simple troubleshooting etc.



### Warranty and Maintenance

Our comprehensive after-sales service includes one-year warranty from the date of installation and calibration; 24-hour turnaround for a solution to faults or breakdown; lifetime maintenance services on demand.



# JATER LASER

JATER Laser , Light Of The World



Website



Facebook



Youtube



Instagram

Headquarters Add.: No. 467, Jinhaisan Road, Wenzhou Economic & Technological Development Zone, Wenzhou, Zhejiang, China

Website: <http://en.cn-laser.com/>

Email: [Jt@cn-laser.com](mailto:Jt@cn-laser.com)

Tel: 400-187-0000