



JUNE 17 – JUNE 22, 2022 UPDATE #32

CLEANUP ACTIVITIES THIS WEEK

CANNON MINE PIT (CMP)

- Continued installing permanent fence around the CMP
- Continued removing temporary fence around the CMP

O'CONNOR DISPOSAL AREA (OCDA)

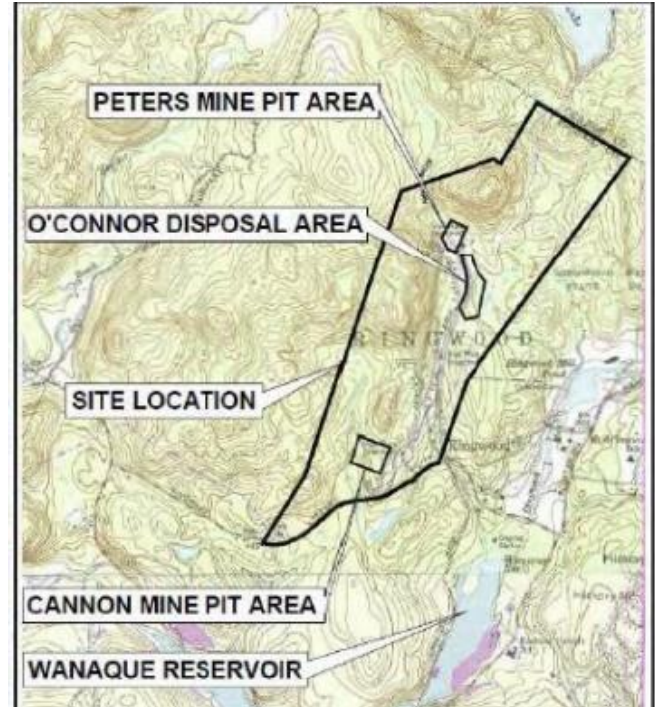
- Continued temporary seeding of the OCDA
- Began installing temporary erosion control mat

PETERS MINE PIT (PMP)

- Continued to dig up and stockpile fill material from above the water table in the PMP
- Drums were excavated and contained in larger plastic drums in preparation for offsite disposal
- Continued sampling and analyzing stockpiled fill material in the PMP
- Continued to reuse non-hazardous stockpiled fill as backfill for the PMP
- Continued importing clean fill material to backfill the PMP

INSPECTIONS AND MONITORING

- Continued inspecting/maintaining silt fencing, hay bales and berms used for erosion control in all areas
- Continued air, vibration, wildlife, and settlement monitoring



CLEANUP ACTIVITIES NEXT WEEK

CANNON MINE PIT (CMP)

- Continue installing permanent fence around the CMP
- Continue removing temporary fence from around the CMP

O'CONNOR DISPOSAL AREA (OCDA)

- Continue temporary seeding of the OCDA
- Continue installing temporary erosion control mat

PETERS MINE PIT (PMP)

- Continue to dig up and stockpile fill material from above the water table in the PMP
- Continue sampling and analyzing stockpiled fill material in the PMP
- Continue to reuse non-hazardous stockpiled fill as backfill for the PMP
- Continue importing clean fill material to backfill the PMP

INSPECTIONS AND MONITORING

- Continue inspecting/maintaining silt fencing, hay bales and berms used for erosion control in all areas
- Continue air, vibration, wildlife, and settlement monitoring

Contact Information:

Joe Gowers
EPA Remedial Project Manager
(212) 637-4413
gowers.joe@epa.gov

Pat Seppi
EPA Community Involvement Coordinator
(646) 369-0068
seppi.pat@epa.gov

Immediate concerns regarding ongoing construction can also be referred to:

de maximis, inc.
(610) 435-1151 ext. 2