

Protect Your Yields from SCN & SDS with ILEVO® HL Seed Treatment

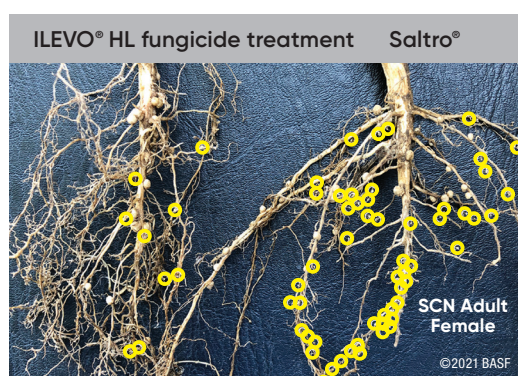


ILEVO® HL

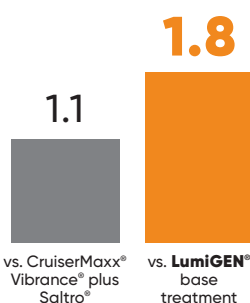
Seed Treatment

Enhanced protection with ILEVO® HL seed treatment outperforms the competition.

For acres at risk from sudden death syndrome (SDS) or soybean cyst nematode (SCN) injury, choose Pioneer® brand soybean products with tolerance to these pests plus ILEVO® HL seed treatment to help deliver exceptional activity and protect your genetic investment.



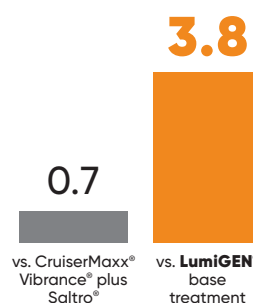
YIELD ADVANTAGE (Bu/A) n=46



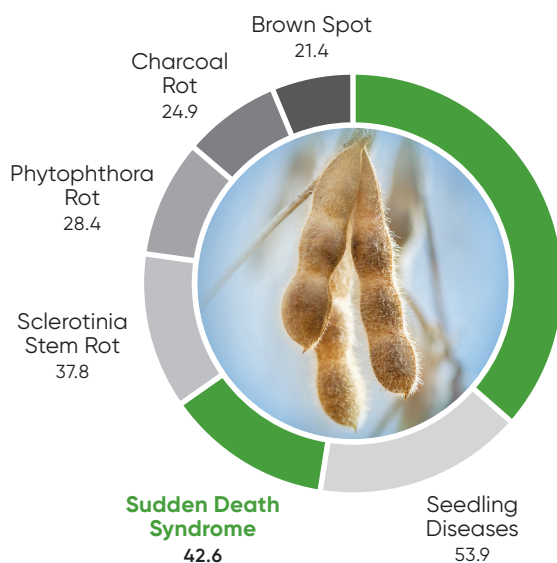
Pioneer® brand soybeans treated with ILEVO® HL seed treatment outperformed Salstro seed treatment by 1.1 Bu/A under soybean cyst nematode pressure and 1.8 Bu/A more than the base seed treatment.**



YIELD ADVANTAGE (Bu/A) n=12



Pioneer brand soybeans treated with ILEVO® HL seed treatment outperformed Salstro seed treatment by 0.7 Bu/A under sudden death syndrome pressure and 3.8 Bu/A more than the base treatment under moderate to high SDS pressure.**



Don't let SCN & SDS rob your soybean yields!

YIELD LOSS ESTIMATES

(Millions of Bushels) 5-year Average

Soybean Cyst Nematode
118.4

Source: 5-year average 2013-2017; CropProtectionNetwork.org

* 2012-2015 data are based on average of all comparisons made in 165 locations. Yield benefit of 1.5 bu/a under moderate SCN pressure using the lower SCN rate, 40 locs. Yield benefit of 6.4 bu/a under moderate SCN plus SDS pressure using the higher SDS rate, 46 locs. Do not use these or any other data from a limited number of trials as a significant factor in product selection. Product responses are variable and subject to a variety of environmental, disease, and pest pressures. Individual results may vary. Flupyradifluron use rate of 0.15mg ai/seed.

** 2020 data are based on average of all comparisons made in 76 locations across MN, ND, SD, IA, MO, IL, IN and OH through Dec 1, 2020. Multi-year and multi-location is a better predictor of future performance. Flupyradifluron use rate of 0.15mg ai/seed.

ILEVO® and ILEVO® HL are registered trademarks of BASF.

Salstro®, CruiserMaxx® and Vibrance® are registered trademarks of Syngenta.

Components of LumiGEN® seed treatments for soybeans are applied at a Corteva Agriscience production facility or by an independent sales representative of Corteva Agriscience or its affiliates. Not all sales representatives offer treatment services, and costs and other charges may vary. See your sales representative for details. Seed applied technologies exclusive to Corteva Agriscience and its affiliates.

Pioneer® brand products are provided subject to the terms and conditions of purchase which are part of the labeling and purchase documents.™® Trademarks of Corteva Agriscience and its affiliated companies. © 2022 Corteva. 011466 PIO (04/23)