



COVER STYL'

ARCHITECTURAL FINISHES



ARCHITEXTURAL™
Surface. Designed.





REFURB WITH FILM

Looking for an alternative refurbishment solution?

Self-adhesive films could be a simple and cost-effective alternative for your interior design projects. Create faux finishes by wrapping existing surfaces, saving landfill and avoiding the disruption of traditional refurbishments.

Looking for an installer?

We have a growing network of fully trained applicators who will be able to supply and install your projects with confidence. This elite group of installers, from fit out, sign and graphics companies, all share the same mission, to be one of the first to uncover exceptional ways to renovate building interiors and exteriors and to tap into the growing market of architectural finishes.

Architextural...

UK'S LARGEST STOCKIST OF ARCHITECTURAL FILM BRANDS.

1000+ patterns now on our shelves
More choice for your clients
No more long lead times

See our full range of films;
architextural.co.uk



STANDARD RE-FITS
COST 7 TIMES MORE



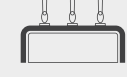
NO LOSS OF
REVENUE



INCREASE REVENUE
FOR PREMIUM ROOMS



QUICK INSTALL WITH
NO BUILDING WORK



NOT JUST FOR
FLAT SURFACES



1500 REALISTIC TEXTURES
AND PATTERNS



TRANSFORM ONE ITEM
OR TRANSFORM MANY



A SUSTAINABLE
SOLUTION



FIRE TESTED, MOISTURE
AND HEAT RESISTANT

THEY SAY THAT FORM
FOLLOWS FUNCTION.
**WE SAY FORM
PRESERVES FUNCTION.**



WOOD FINISHES



Performance varies dependent upon individual pattern construction. Please cross reference the symbols below each finish for application considerations.



Suitable for external application



Not recommended for use on compound curves / stretching



Overlaps preferred, splice joints not recommended



WOOD FINISHES



 A4 	 A2  	 A1 	 AA15 	 AA12 	 AA01 	 AA17 	 AA13 
 AA09 	 AA04 	 AA11 	 AA02 	 AA05 	 AA08 	 AA14 	 AA06 
 AB02 	 AB03 	 AB06 	 AB05 	 AB07 	 AC02 	 AC04 	 AC01 
 AF07 	 AF02 	 AF03 	 AF09 	 AF05 	 AF08 	 AF06 	 AF01 
 AG13 	 AG01 	 AG07 	 AG04 	 AG20 	 AG14 	 AG21 	 AG08 



WOOD FINISHES



AG11 W AG02 W AG16 W AG18 W AG15 W AG17 W AG09 W AG10 W



AL29 W AL36 W AL23 W AL10 W AL30 W AL26 W AL08 W AL28 W



AL24 W AL34 W AL14 W AL12 W AL25 W AT03 W AT05 W AT02 W



AT06 W AZ10 W AZ06 W AZ07 W AZ02 W AZ03 W AZ01 W AZ04 W



B50 W B6 W B5 W B8 W B4 W B3 W B1 W B9 W

WOOD FINISHES



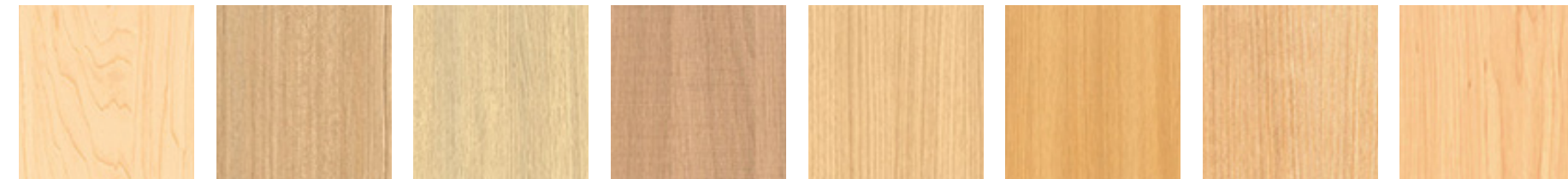
CT91 W CT102 W CT18 W CT17 W CT73 W CT74 W CT92 W CT93 W



CT95 W CT90 W CT19 W CT13 W CT14 W CT76 W CT94 W CT79 W



CT100 W CT101 W CT40 W CT96 W CT28 W CT33 W CT84 W CT62 W



CT20 W CT45 W CT49 W CT16 W CT97 W CT48 W CT41 W CT01 W



CT06 W CT53 W CT46 W CT75 W CT98 W CT99 W CT78 W CT87 W

WOOD FINISHES



CT77 W CT70 W CT10 W CT11 W CT44 W CT22 W CT71 W CT54 W



CT05 W CT08 W CT09 W CT43 W CT29 W CT24 W CT26 W CT89 W



CT57 W CT66 W CT21 W CT25 W CT02 W CT67 W CT60 W CT56 W

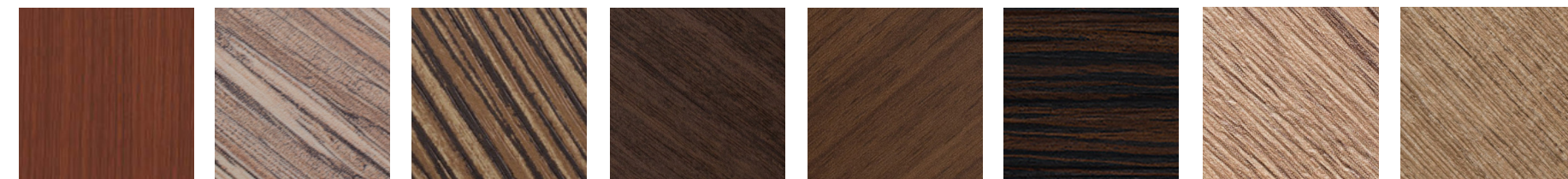


CT80 W CT88 W CT15 W CT42 W CT37 W CT36 W CT27 W CT69 W

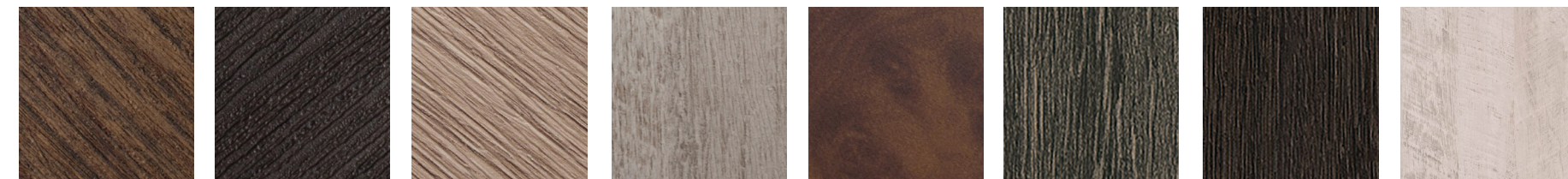


CT68 W CT55 W CT59 W CT61 W CT52 W CT58 W CT04 W CT50 W

WOOD FINISHES



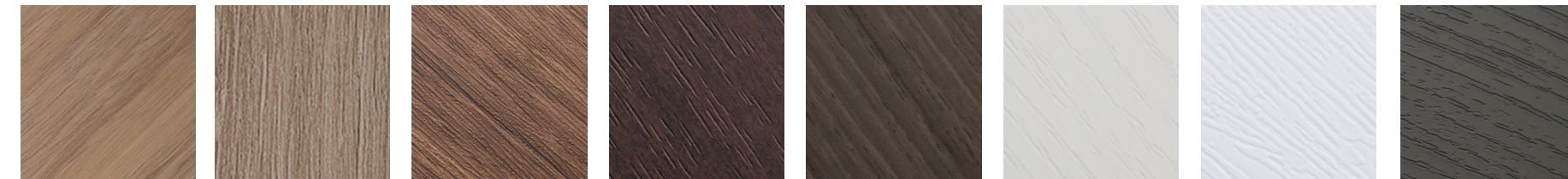
C2 W D4 W D3 W D1 W E4 W E1 W F5 W F4 W



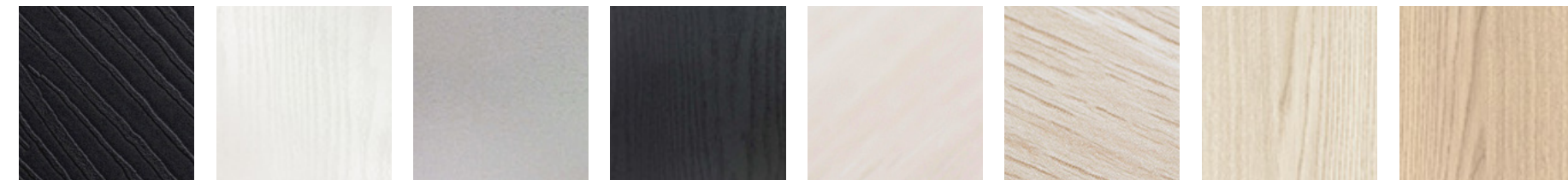
F6 W F7 W G0 W G6 W G3 W G4 W G5 W H10 W



H50 W H7 W H6 W H8 W H4 W H5 W I9 W I16 W



I14 W I13 W I11 W I7 W I10 W J17 W J14 W J18 W



J2 W MA10 W MA12 W MA14 W NE63 W NE61 W NE66 W NE67 W

WOOD FINISHES



NE64 W NE65 W NE57 W NE13 W NE68 W NE62 W NE45 W NE46 W



NF17 W NF18 W NF85 W NF86 W NF21 W NF58 W NF64 W NF29 W



NF40 W NF19 W NF32 W NF75 W NF27 W NF20 W NF22 W NF23 W



NF24 W NF25 W NF28 W NF36 W NF34 W NF31 W NF87 W NF72 W



NF73 W NF62 W NF96 W NF53 W NF76 W NF42 W NF74 W NF44 W

WOOD FINISHES



NF46 W NF38 W NF30 W NF41 W NF35 W NF45 W NF80 W NF48 W



NF89 W NF88 W NF77 W NF78 W NF57 W NF66 W NF63 W NF79 W



NF61 W NF43 W NF94 W NF47 W NF37 W NF39 W NF90 W NF91 W



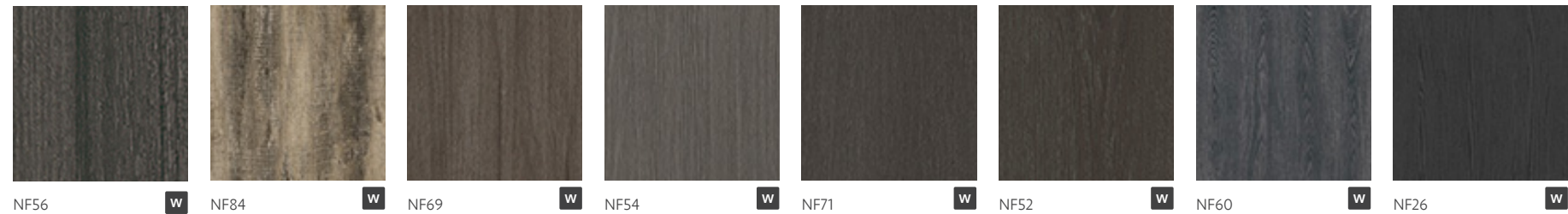
NF92 W NF67 W NF82 W NF65 W NF81 W NF68 W NF50 W NF95 W



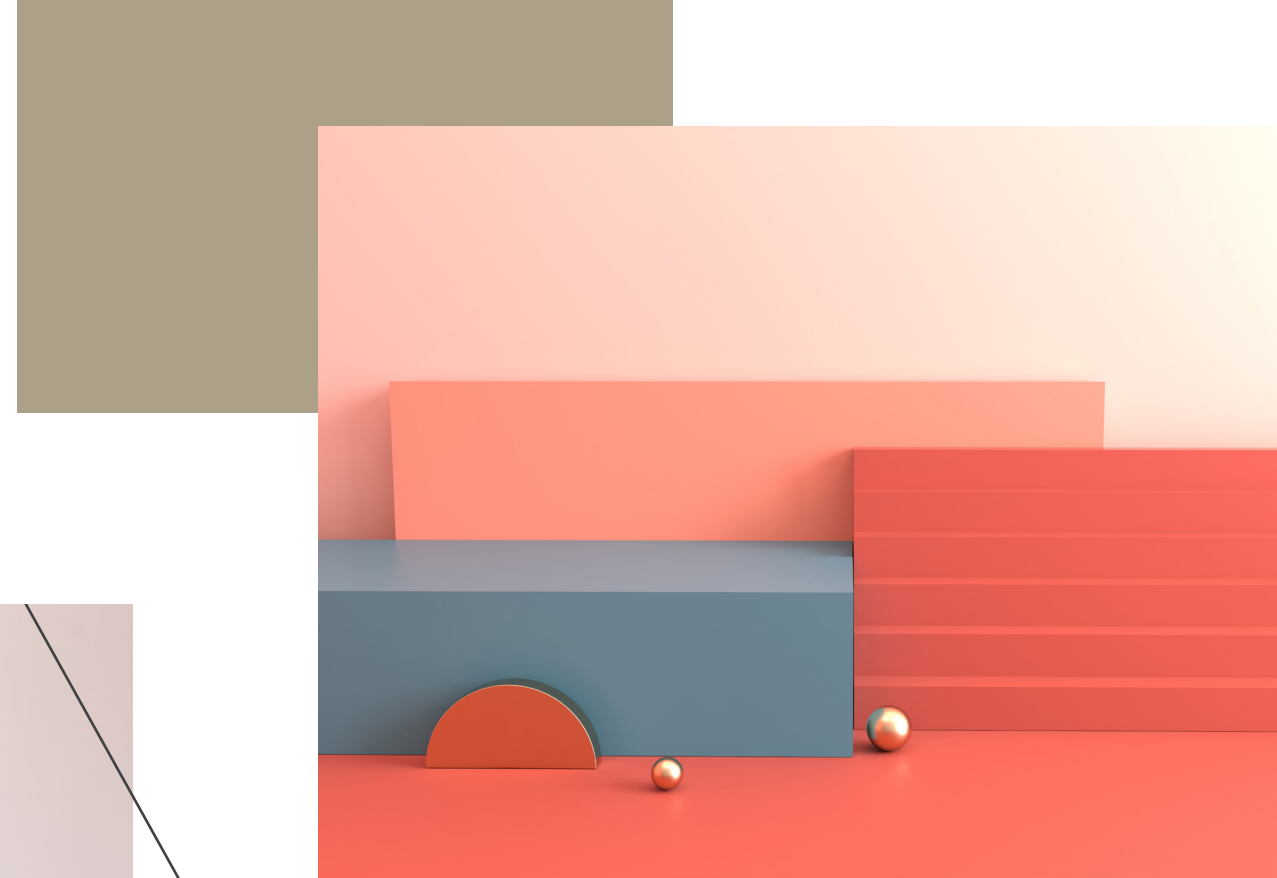
NF51 W NF33 W NF59 W NF93 W NF70 W NF55 W NF49 W NF83 W




WOOD FINISHES



COLOUR FINISHES



Performance varies dependent upon individual pattern construction. Please cross reference the symbols below each finish for application considerations.

-  Suitable for external application
-  Not recommended for use on compound curves / stretching
-  Overlaps preferred, splice joints not recommended



COLOUR FINISHES



COLOUR FINISHES



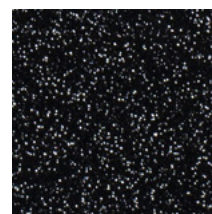
COLOUR FINISHES



L2 W



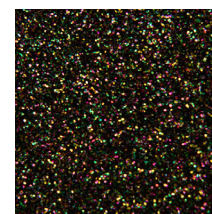
R9 ! W



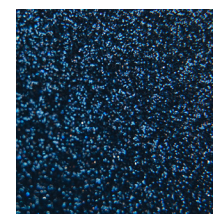
J9 W



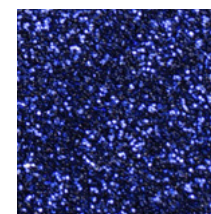
J16 W



R14 ! W



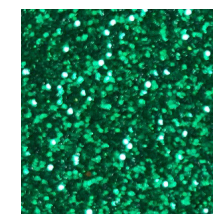
R15 ! W



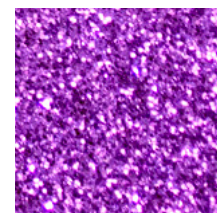
R11 ! W



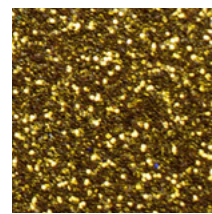
R8 ! W



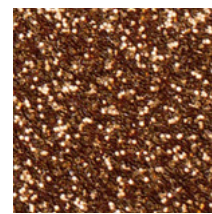
R12 ! W



R13 ! W



R6 ! W



R10 ! W



R5 ! W



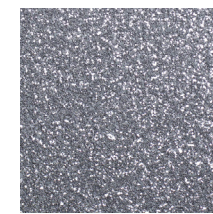
R19 ! W



R17 ! W

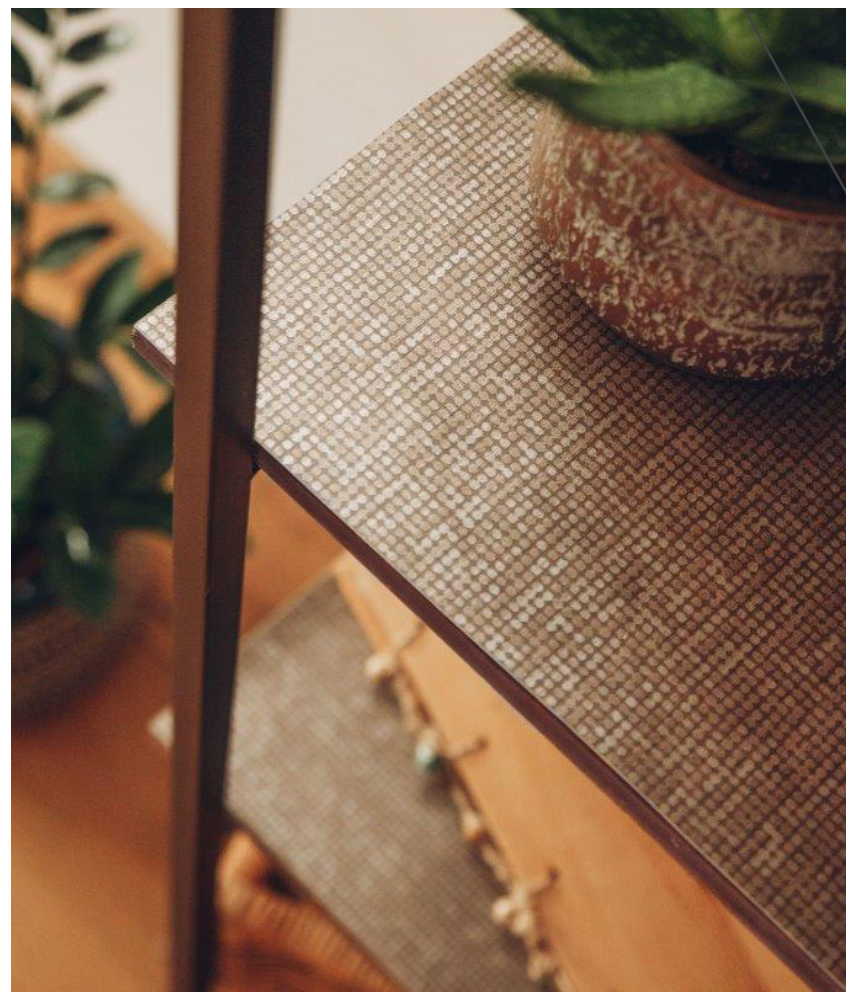


R18 ! W



R7 ! W

METALLIC FINISHES



Performance varies dependent upon individual pattern construction. Please cross reference the symbols below each finish for application considerations.

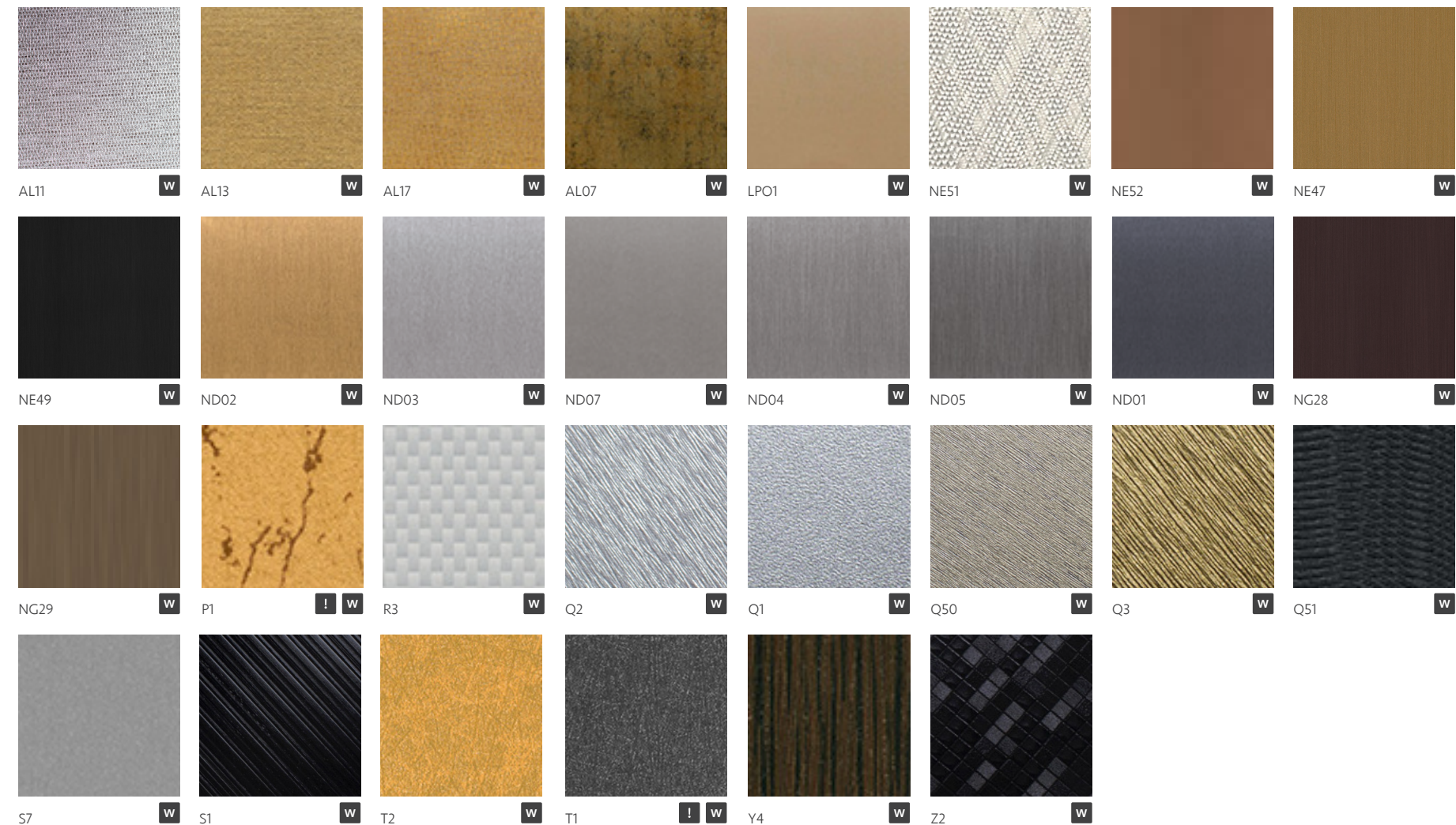
Suitable for external application

Not recommended for use on compound curves / stretching

Overlaps preferred, splice joints not recommended



METALLIC FINISHES



METALLIC FINISHES

STONE FINISHES

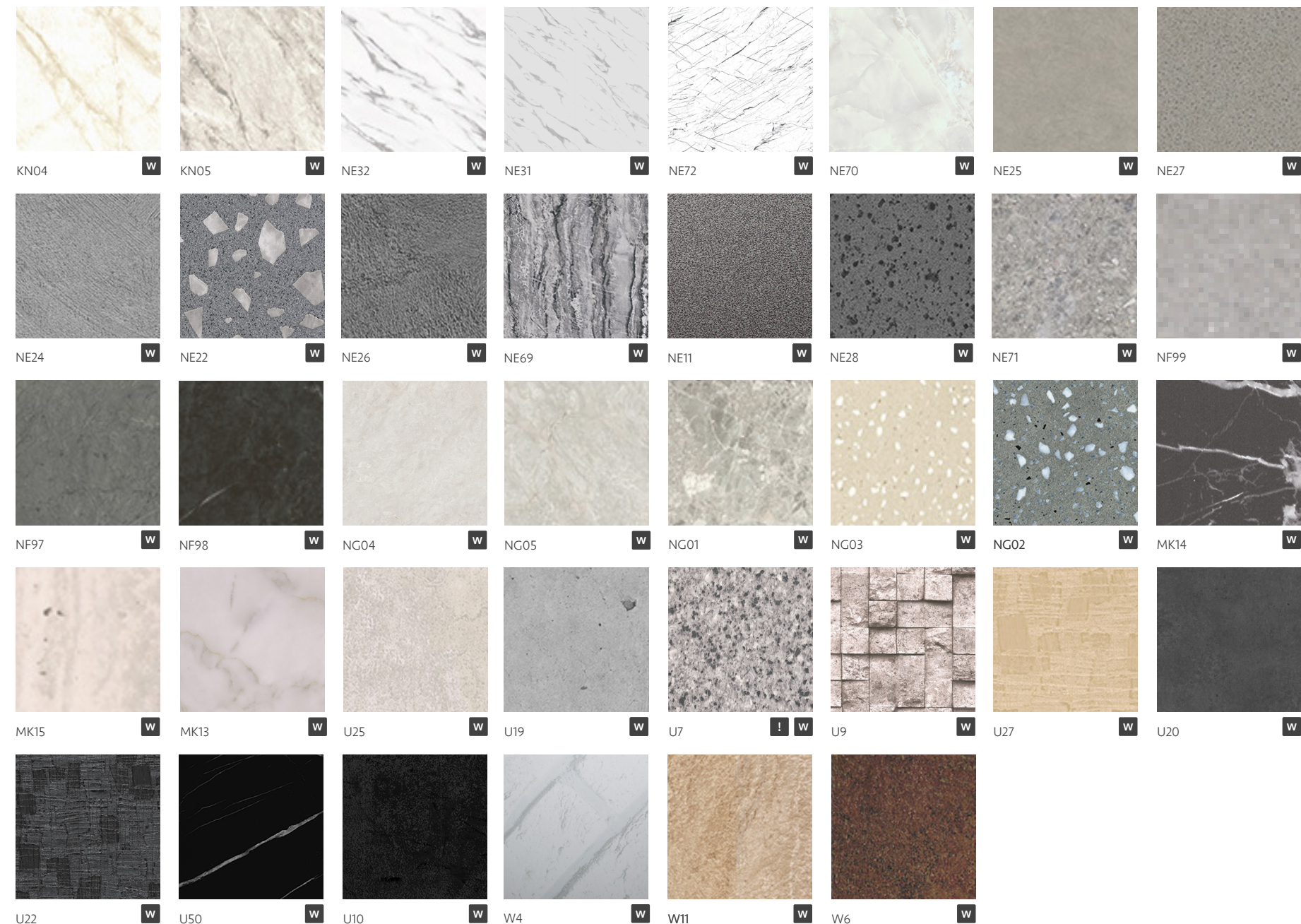


Performance varies dependent upon individual pattern construction. Please cross reference the symbols below each finish for application considerations.

- Suitable for external application
- Not recommended for use on compound curves / stretching
- Overlaps preferred, splice joints not recommended



STONE FINISHES



FABRIC FINISHES



Performance varies dependent upon individual pattern construction. Please cross reference the symbols below each finish for application considerations.

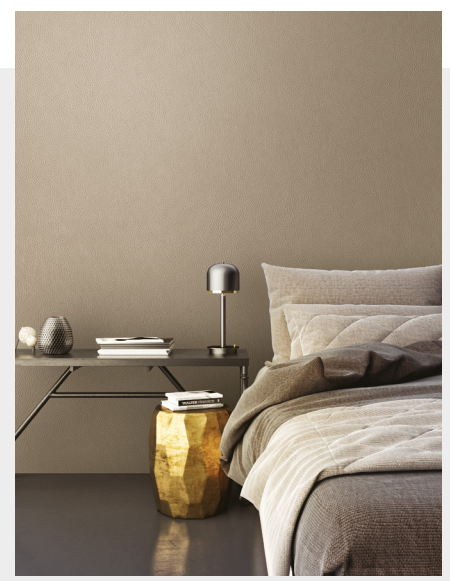
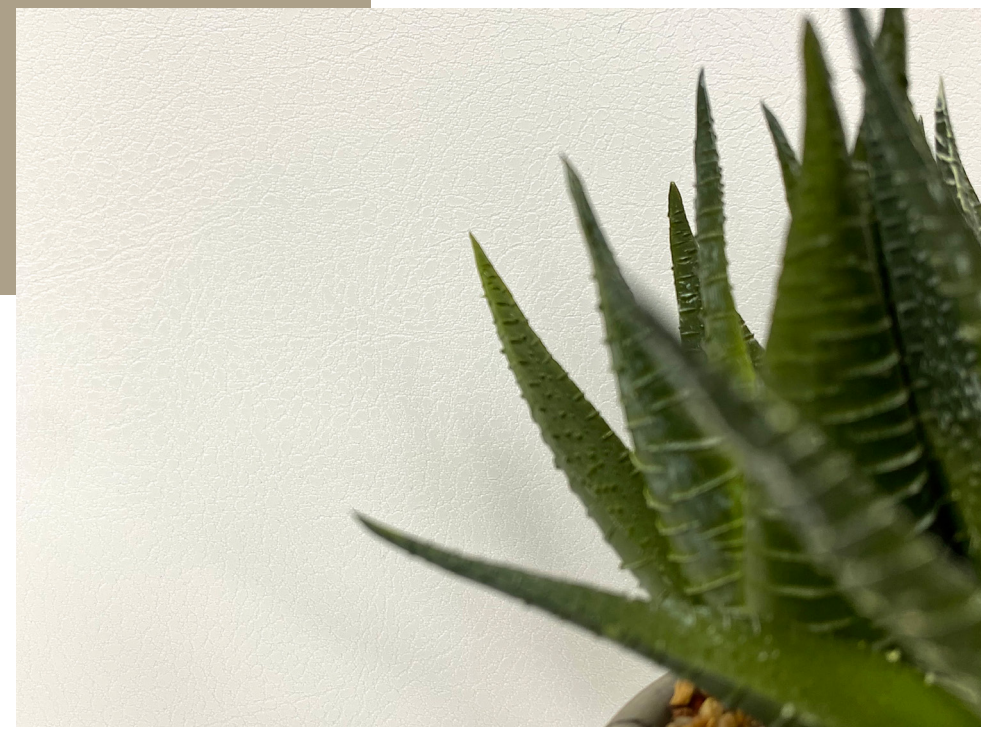
- Suitable for external application
- Not recommended for use on compound curves / stretching
- Overlaps preferred, splice joints not recommended





FABRIC FINISHES



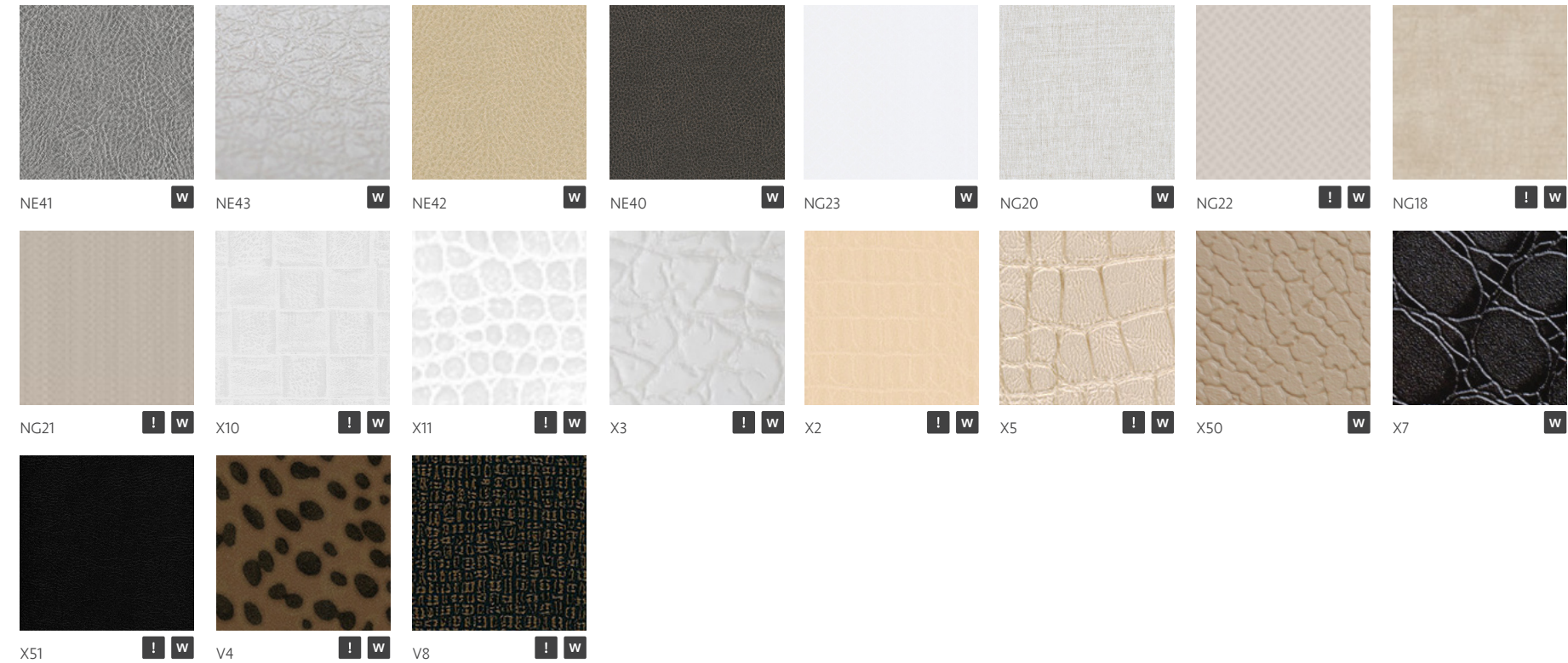
LEATHER FINISHES



Performance varies dependent upon individual pattern construction. Please cross reference the symbols below each finish for application considerations.

-  Suitable for external application
-  Not recommended for use on compound curves / stretching
-  Overlaps preferred, splice joints not recommended

LEATHER FINISHES





TECHNICAL SPECIFICATIONS

The use of architectural film has become more prevalent over the last few years as there has been a shift in attitude toward using sustainable solutions and methods within the construction sector.

Wrapping doors or case goods instead of ripping out and sending to landfill is a powerful statement for any stakeholders within a refurbishment scheme.

We recommend you discuss all technical considerations for your project with one of our skilled installation partners. Please contact us to organise a consultation or trial application with a member of our installation network



DURABILITY

Due to the number of finishes available, durability varies between patterns and brands. Cover Styl' finishes typically last 10 years, standard 3M DI-NOC has a durability of 5 years for exterior applications but up to 12 years for indoor use. The specialist exterior range however is expected to last 10 years+ ensuring protection against defects in fading, peeling, discoloration or loss of adhesion.

ABRASION RESISTANCE

Superior to many common wall surfaces such as paint/wallpaper, an equivalent level of HPL. There are additional specialist ranges also available for high traffic areas, or where greater protection is sought.

IMPACT RESISTANCE

Performance is superior to many common wall surfaces such as paint/wallpaper. However, film surfaces can be dented if sufficient force is applied. Impact resistance is highly dependent on the strength of the substrate material onto which it is applied. As it is a vinyl, it offers a degree of cushioning on impact, where harder substrates such as laminates may crack with the same impact. However, the beauty of architectural film, is that any damage over its lifetime can be repaired with an invisible patch, without having to remove or replace any expensive panels.

CLEANING

Architectural films are made from durable PVC, meaning they are wipeable and practical. They are also resistant to staining by common substances e.g. food or household cleaners. Full technical spec sheets are available on request.

FIRE CERTIFICATION

Architectural films meet all building and IMO regulations with fire certifications available across the range. Should you require specific information by patterns, we can put you in touch with our technical department. Fire test results vary by finish and application substrate, with most classified as class B or C with low dripping and emissions.





ARCHITEXTURAL™

Surface. Designed.



For more information visit
www.architextural.co.uk

01833 690305

info@architextural.co.uk

www.architextural.co.uk



William Smith Group 1832 Grove Works Queen Street Barnard Castle DL12 8JQ

PART OF **WILLIAM SMITH GROUP 1832**

