



VEGA

**VEGA Americas: Creating Harmony
Between People, Planet, and Prosperity
by Being Vital, Virtuous, and Viable**

Net Zero and Sustainable Construction

Your Presenters



Daniel Lessing
Client Leader



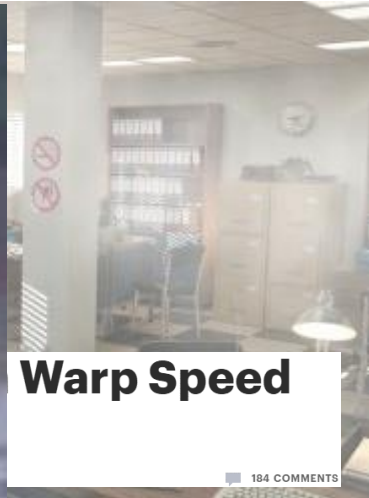
John Groom
President

Presentation Outline

- A Look at 2021 and 2022
- What Our Clients Are Saying
- Importance of an ESG
- ESG to OPR
- OPR to Reality
- Summary



2021 and 2022...



As of March 21, 2022...



The SEC recently voted 3-1 to **propose long-awaited standards for how businesses traded on the stock market must reveal to investors the ways climate change affects their financial stability**, along with their own roles in the production of greenhouse gasses.

What Are Our Clients Saying?



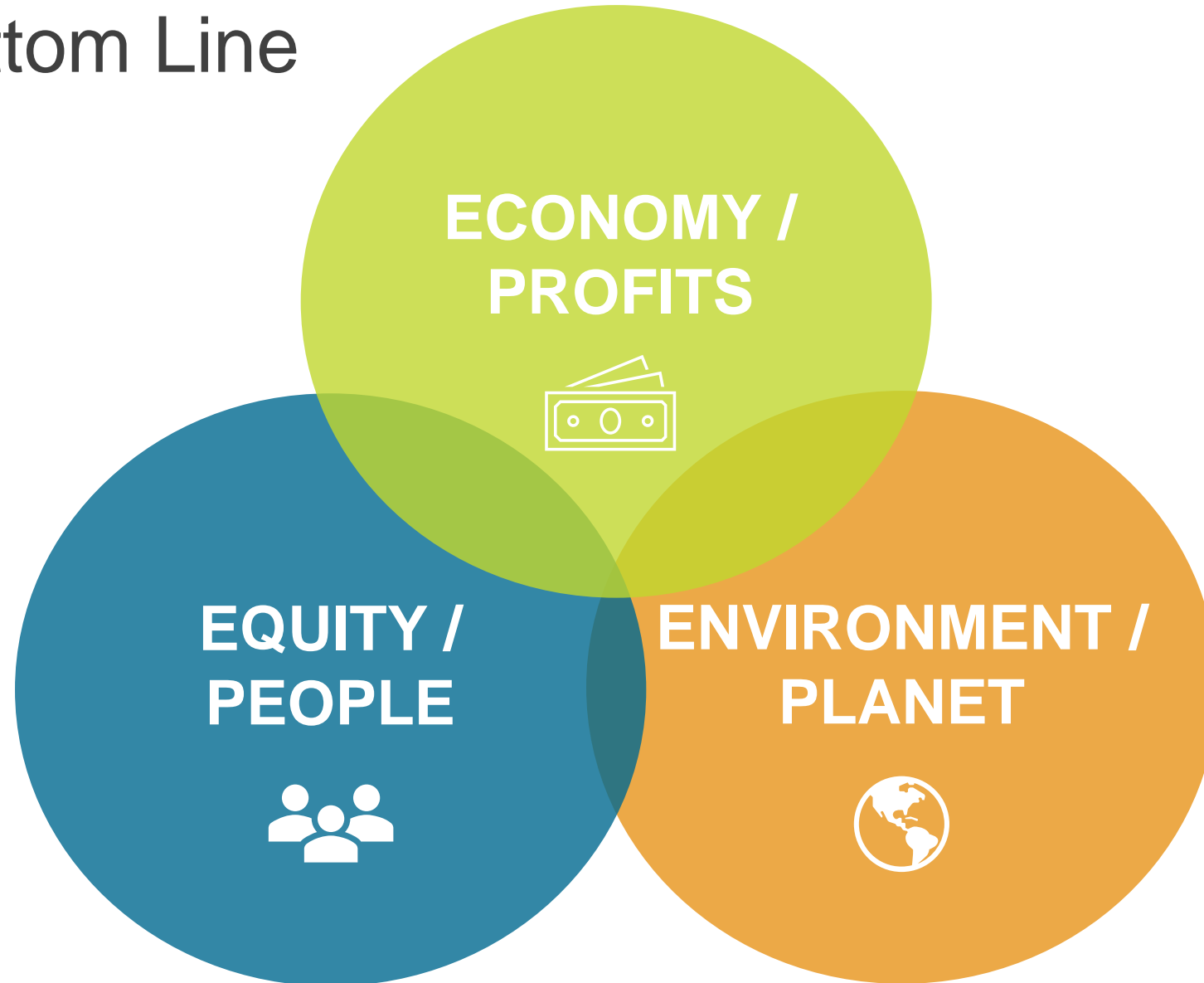
VEGA

The P&G logo, with "P&G" in a blue, italicized, serif font.

FUJIFILM

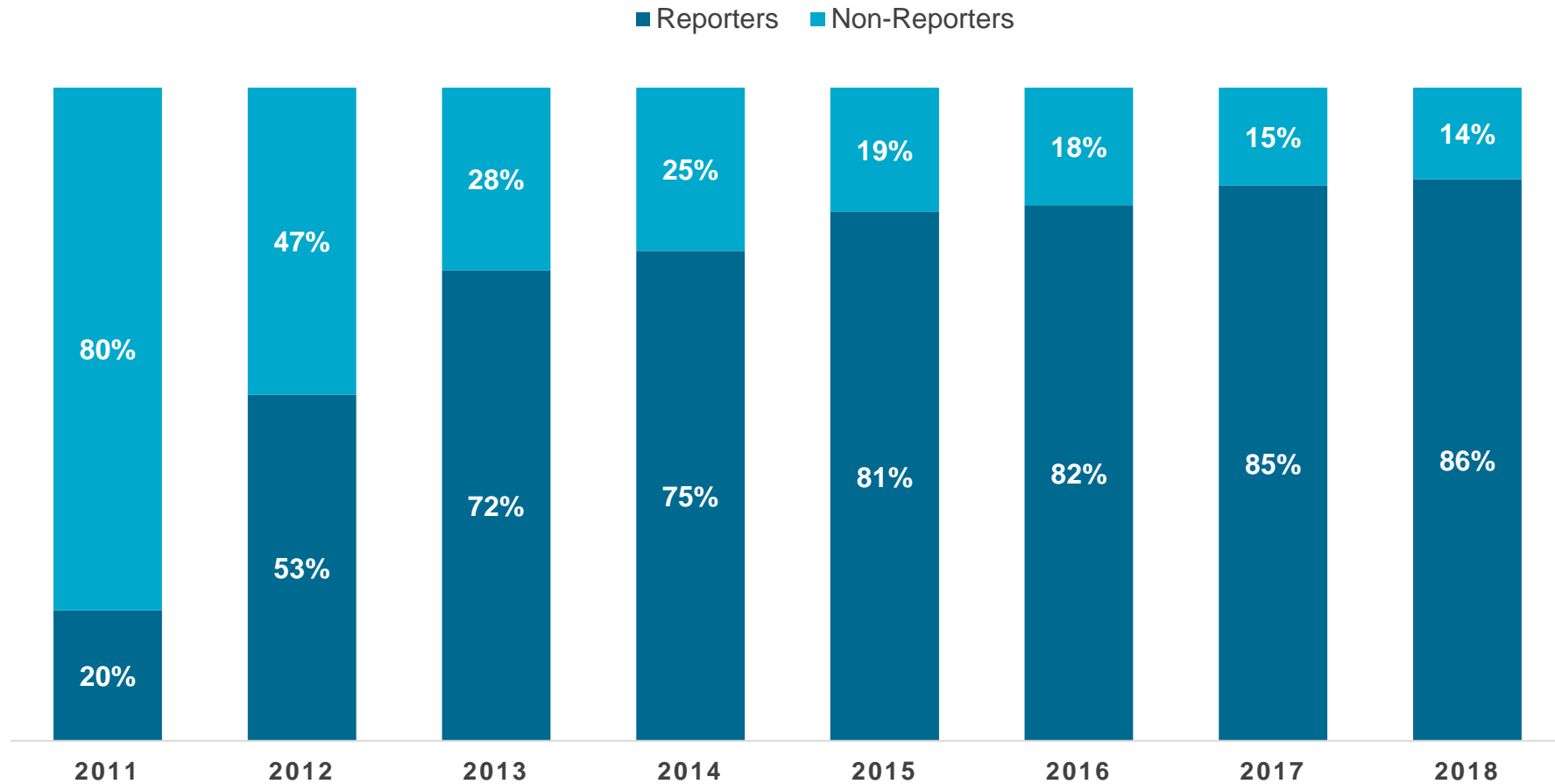
JPMORGAN CHASE & Co.

Triple Bottom Line



Importance of an ESG

S&P 500 COMPANIES SUSTAINABILITY REPORTING



Importance of an ESG



Importance of an ESG (Environmental)

85%
It is widely held among business decision-makers that the **SKILLS OF EMPLOYEES** account for **85%** of a company's **ASSETS**.*

The pursuit of wellness can result in:

- INCREASED** productivity and job satisfaction
- FEWER** sick days
- IMPROVED** mood

\$1 investment → **\$9-14** return

An investment of \$1 in **IMPROVED INDOOR AIR QUALITY** has the potential to return anywhere from \$9 to \$14 in benefits including reduced absenteeism, increased productivity, reduced health care expenses and more.**

*Source: EDUCBA, "Why Are Employees The Most Valuable Intangible Asset?" 2017 |
**Source: William J. Fisk, "Health and Productivity Gains From Better Indoor Environments and Their Relationship with Building Energy Efficiency," 1997.

OPTIMIZED ENVIRONMENT FOR PRODUCTIVITY

| CONVENTIONAL | ENHANCED GREEN |
|---|--|
| <p>INDOOR ENVIRONMENTAL QUALITY CONDITIONS</p> <p>Carbon dioxide levels at 950 parts per million</p> <p>Ventilation rates at 20 cubic feet per minute of outdoor air per person</p> <p>Indoor total volatile organic compounds BETWEEN 500-700 micrograms/cubic meter</p> | <p>INDOOR ENVIRONMENTAL QUALITY CONDITIONS</p> <p>Carbon dioxide levels at 600 parts per million</p> <p>Ventilation rates at 40 cubic feet per minute of outdoor air per person</p> <p>Indoor total volatile organic compounds LESS THAN 50 micrograms/cubic meter</p> |

HEALTH BENEFITS

Regulatory efforts focus on outdoor air, even though people spend most of their time indoors, where air quality and other aspects can impact both physical health and mental functioning.

90%
TIME SPENT INDOORS

Workers in green buildings have fewer complaints about air quality and humidity.

NOISE REDUCTION
Productivity is improved in offices using materials to reduce noise.

PRODUCTIVITY
In one study, cognitive function doubled with enhanced ventilation.

MAXIMIZE NATURAL LIGHT
Workers who sit near windows get more light and sleep an extra 46 minutes at night. Light helps regulate sleep cycles.

FEWER AIR POLLUTANTS
Green buildings can reduce illnesses caused by air quality issues.



Importance of an ESG (Social)



“Nearly **40%** of millennials have chosen a job because of company sustainability. Less than a quarter of gen X respondents said the same, and 17% of baby boomers.”

“As tensions around racial justice increase in the U.S., **68%** of consumers expect brands to be clear about their values...”

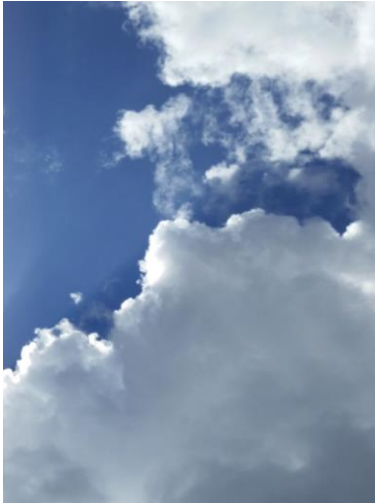
ESG to OPR (Owner-Project-Requirements)



ESG to OPR



Six Target Focus Areas



INDOOR AIR QUALITY

Material Selection
Air Quality
Enhanced Ventilation



ENERGY USE

Modeling
Mech / Elec
Opportunities



OCCUPANT COMFORT

Acoustical Comfort
Thermal Comfort
Daylighting Strategies
Lighting Level & Color
Temperature



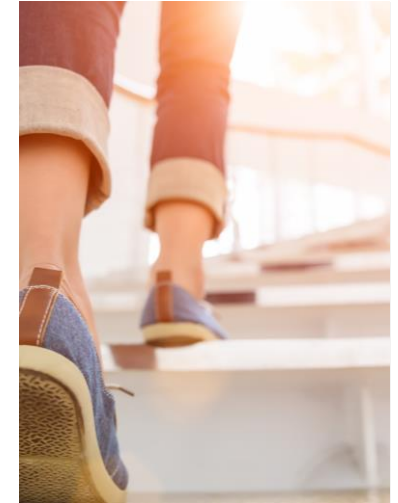
WATER USE

Water Reduction
Water Quality
Drinking Water
Promotion
Water Trends



ACCESS TO NATURE

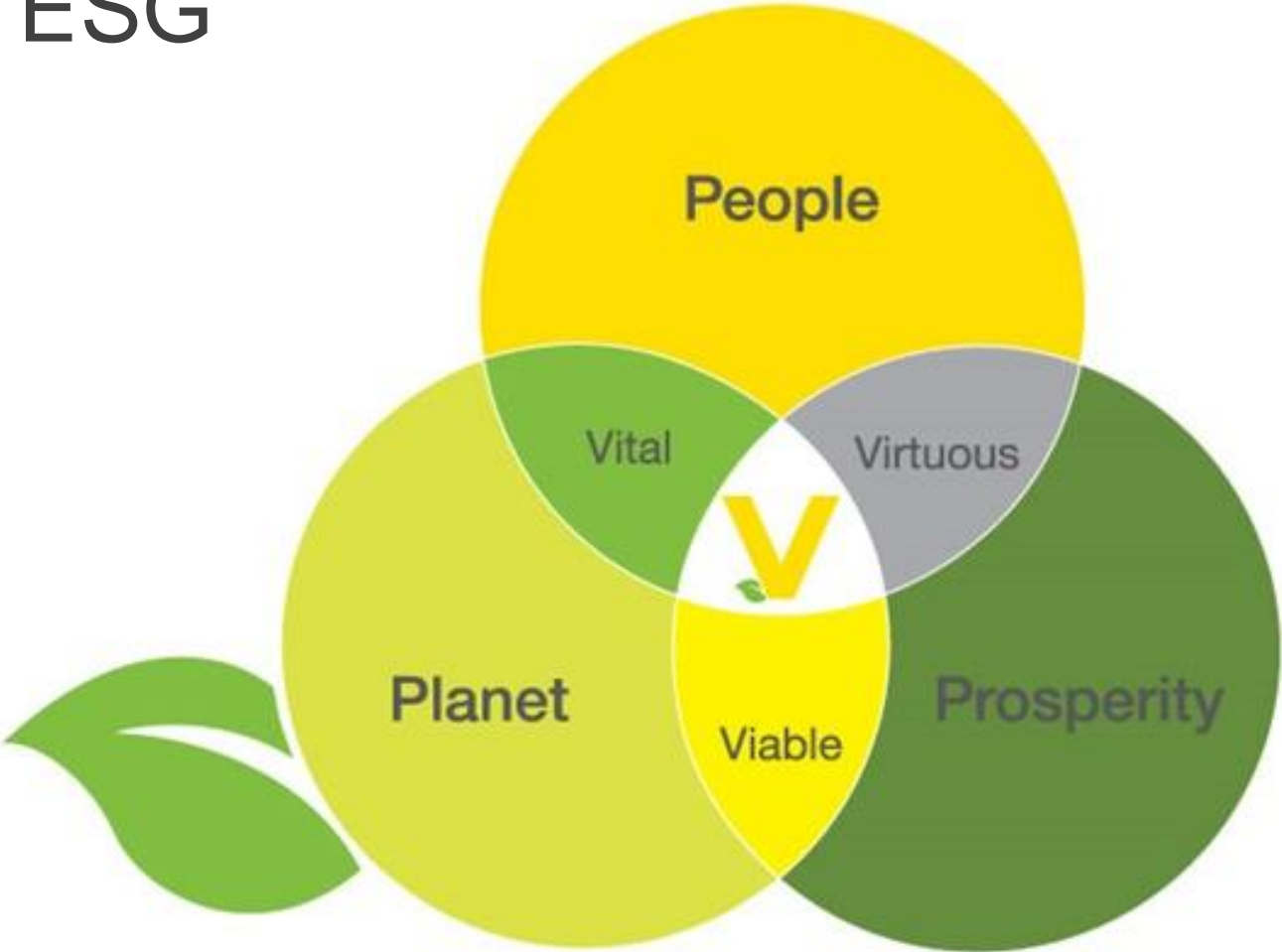
Biophilic Design
Access to Views
Restorative Spaces
Mindfulness



ACTIVE DESIGN

Activity Spaces
Access to Stairs
Visual & Physical
Ergonomics

VEGA: ESG



VEGA: ESG

People

- Wellness
- Safety
- Community Outreach
- Future Success



Planet

- Landfill Diversion
- Efficient Manufacturing
- Campus Remodeling



Prosperity

- Long-term Thinking
- German Inspiration
- Run, Improve, Grow (RIG)
- Cyclical Model



VEGA: ESG

What VEGA is doing globally...

OPR to Reality

- Health and Wellness
 - Universal Experience
 - Right to Light
 - IAQ
 - Exceed Title 29
 - Quality Views
 - Biophilic Design
 - Healthy Food Options and Water Access
- Carbon Reduction
 - **(30% from 2010 baseline)**
 - Envelope Efficiency
 - High-Efficiency HVAC
 - Daylight Harvesting
- Connection to Nature
 - Fitness Center
 - Hiking Trails
 - Bike Paths
 - Tree Coverage
- Construction Waste Diversion



OPR to Reality



Landscaping



Outdoor Meeting Space



Walking Trails

OPR to Reality



Quality Views

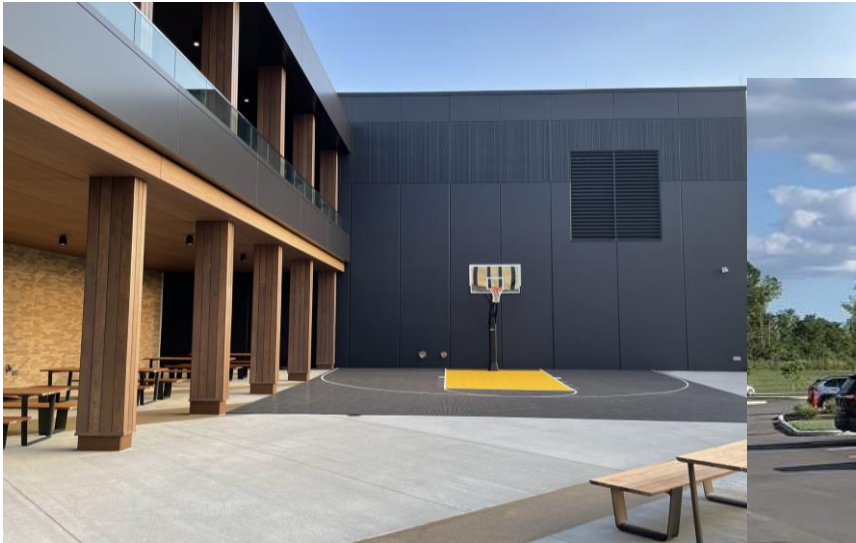


Natural Landscaping,
Local Plants



Access to Nature

OPR to Reality



Fitness

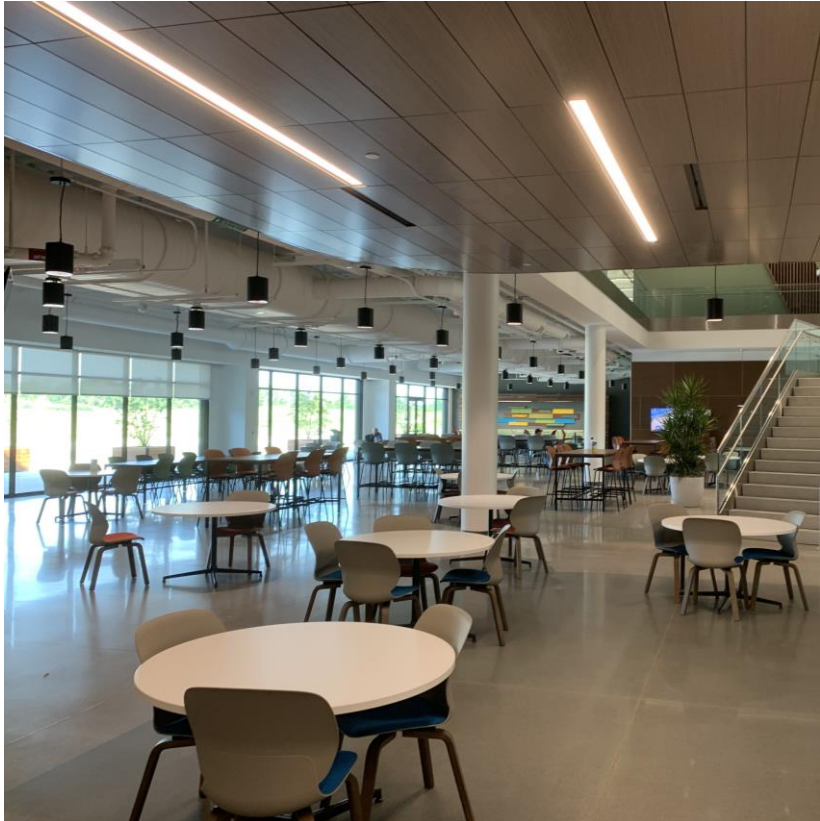


EV Chargers



Walking Trails

OPR to Reality



Views



Fitness Center

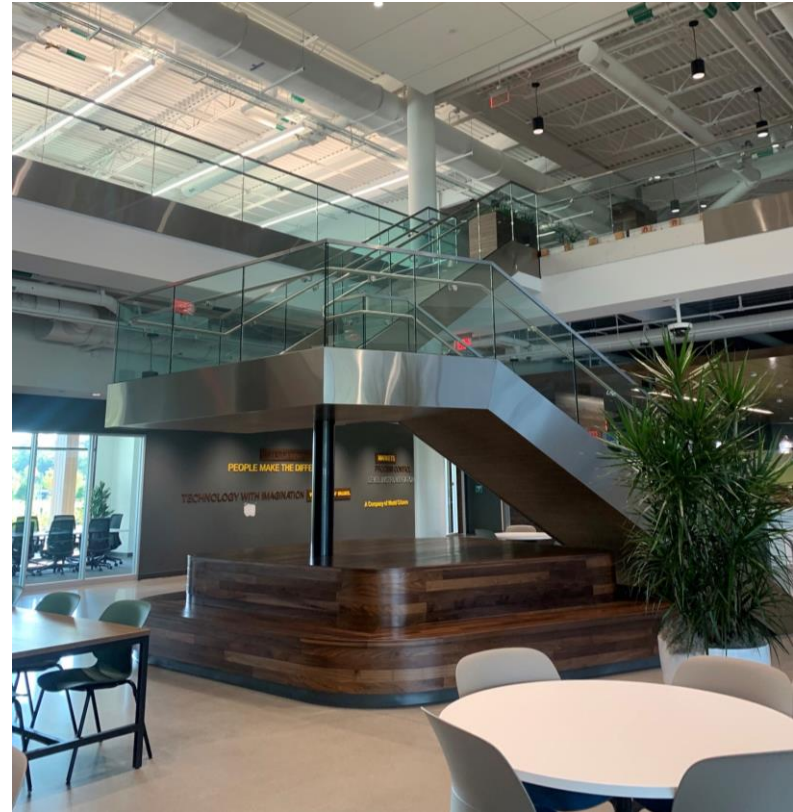


Healthy Food Options

OPR to Reality

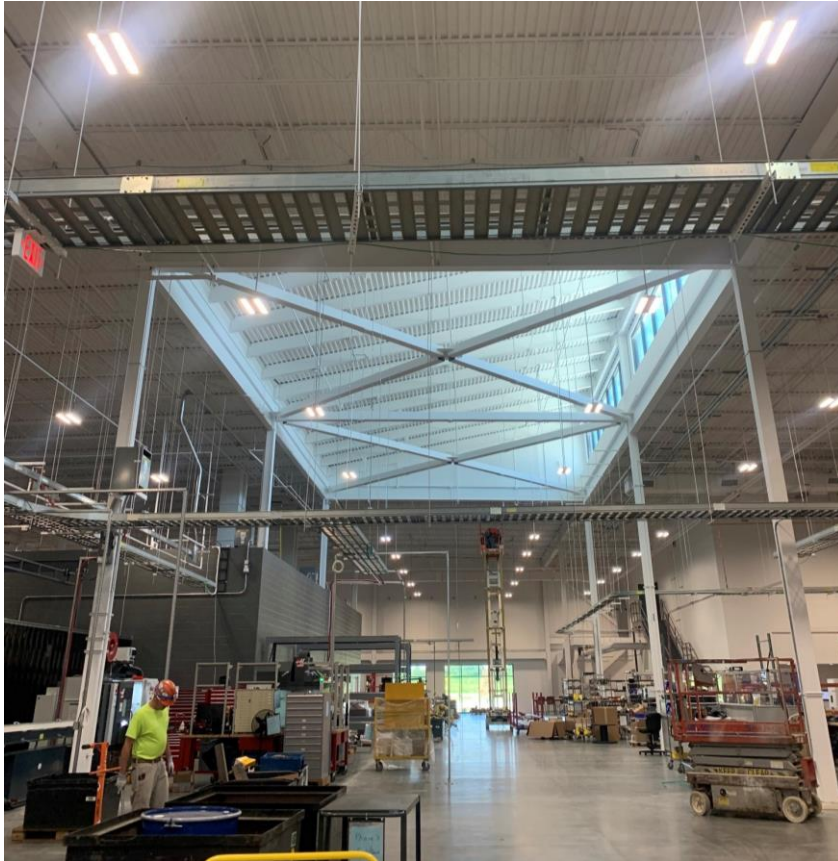


Access to Light



Communicating Stairs

OPR to Reality



Access to Light, High Ceilings



Light-Filled Space

OPR to Reality



Access to Views



Light-Filled Space

Summary / Results

- Employee Retention: 91%
- Improved work attendance
- Lowered internal stress levels
- Improved efficiencies with collaboration spaces
- No additional work from home requests
- Sales increased 166%
- Production on time delivery 94%

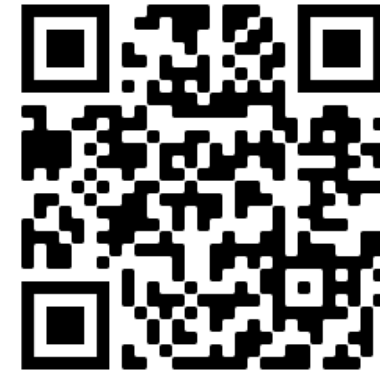


Contact



BHPD

Visit BHPD's website: www.bhdp.com
Reach out: Dlessing@bhdp.com
Let's connect: [linkedin.com/in/dlessing](https://www.linkedin.com/in/dlessing)



VEGA

Visit VEGA's website: www.vega.com/en-us
Reach out: j.groom@vega.com
Let's connect: [linkedin.com/in/john-groom-a46a0034/](https://www.linkedin.com/in/john-groom-a46a0034/)