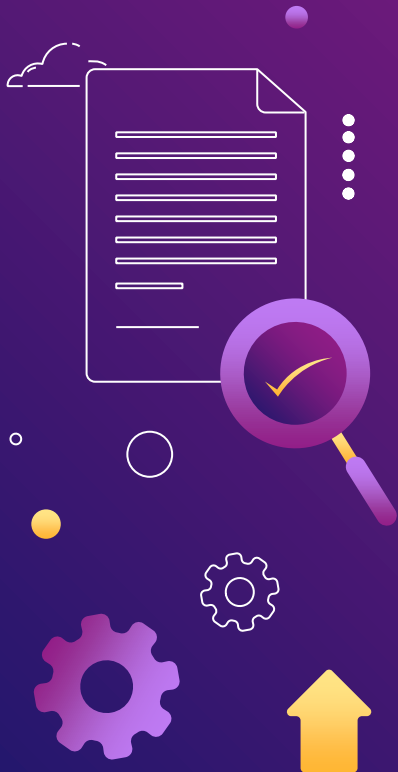




BIRCHVILLE SCHOOL

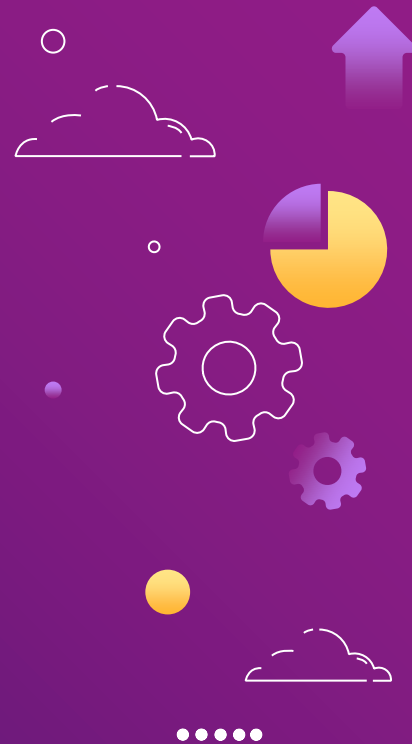
End of Year Data 2024





PĂNUI

Reading





Whole School (Currently Enrolled in 2024) - Progress Overview - Reading (All Students)



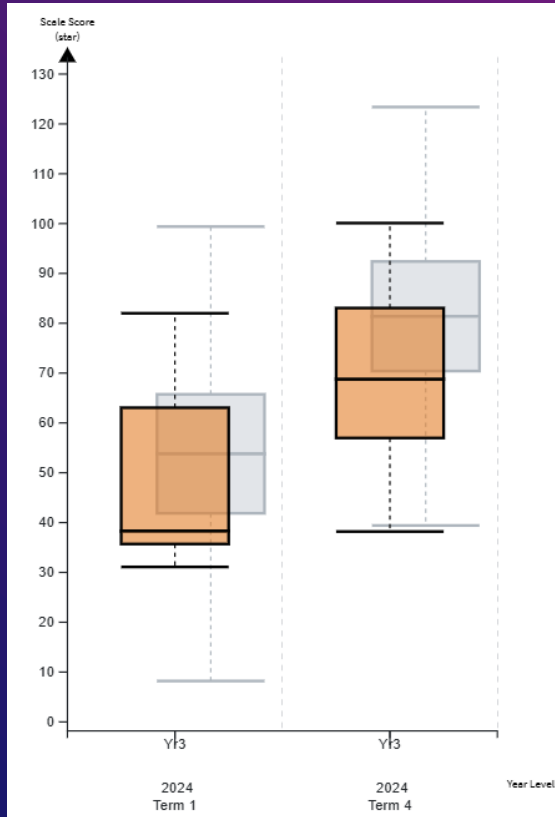
READING				
	End 2021	End 2022	End 2023	End 2024
Well Above Expected Curriculum Level	10	4	0	0
Above Expected Curriculum Level	31	38	14	19
At Expected Curriculum Level	53	52	40	63
Towards Expected Curriculum Level	41	32	8	33
Needs Support To Work Towards Expected Curriculum Level	17	20	4	12
Total At Expected Curriculum Level or above	94 out of 152	94 out of 146	54 out of 66	82 out of 127
Percentage At Expected Curriculum Level or above	62%	64%	82%	65%



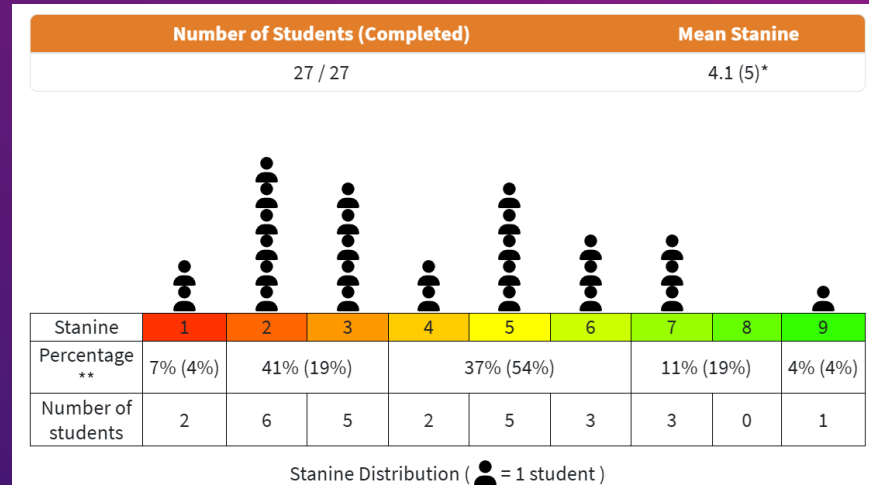
BREAKDOWN OF ACHIEVEMENT

	End Year 0	End Year 1	End Year 2	End Year 3	End Year 4	End Year 5	End Year 6	Totals	
Well Above Expected Curriculum Level								0	0.00%
Above Expected Curriculum Level	2	4	4	6	1		2	19	14.96%
At Expected Curriculum Level	8	11	11	12	4	9	8	63	49.61%
Towards Expected Curriculum Level		2	2	8	10	4	7	33	25.98%
Needs Support To Work Towards Expected Curriculum Level			1	1	4	4	2	12	9.45%
Totals	10	17	18	27	19	17	19	127	
	100%	88%	83%	67%	26%	53%	53%		

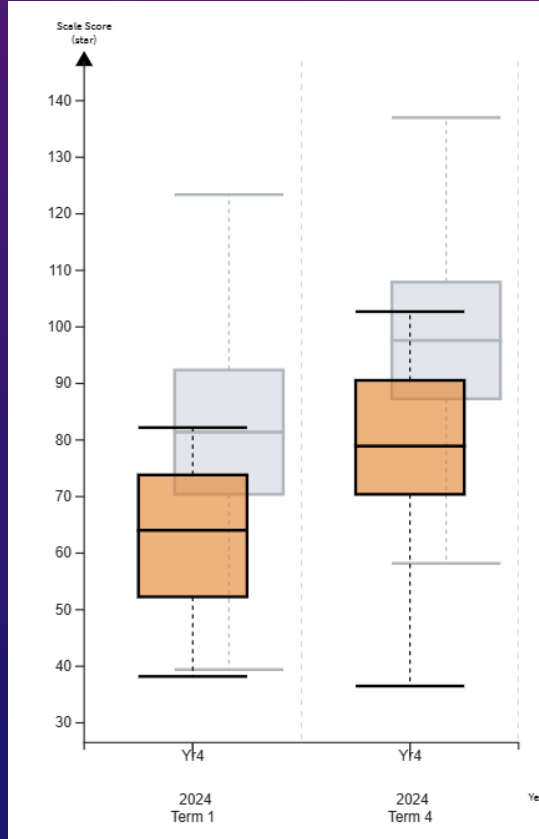
YEAR 3 STAR DATA



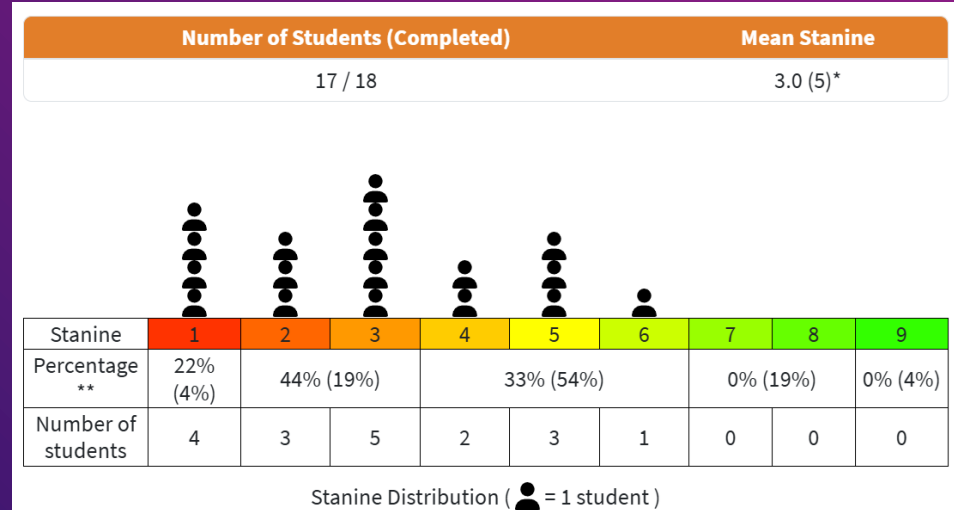
Year	Term	Year Level	Students (Completed)	Mean Scale Score	Standard Deviation	Highest Score	Upper Quartile	Median	Lower Quartile	Lowest Score
2024	Term 1	3	23/23	47.7 (53.8)	16.0 (17.7)	82.0 (99.4)	63.0(65.7)	38.3 (53.8)	35.7(41.9)	31.1 (8.2)
2024	Term 4	3	26/26	70.8 (81.4)	16.2 (16.3)	100.1 (123.4)	83.0(92.4)	68.8 (81.4)	57.0(70.4)	38.2 (39.4)



YEAR 4 STAR DATA

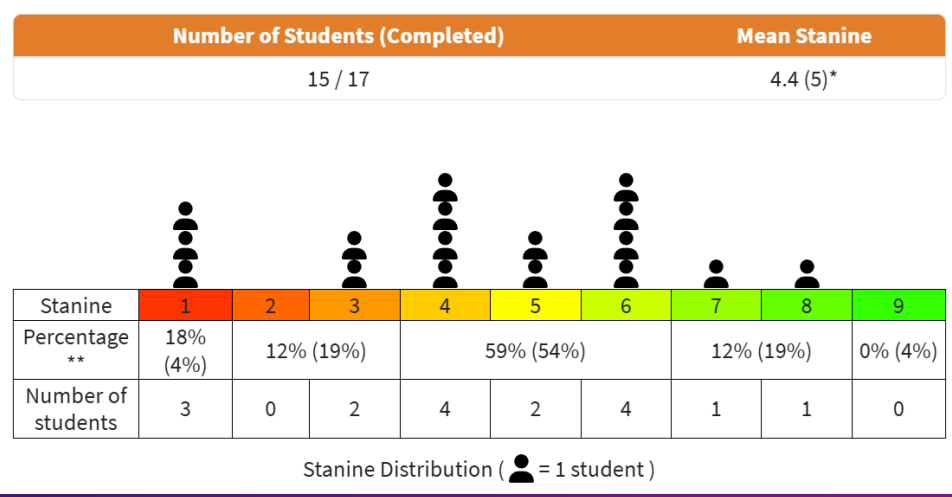
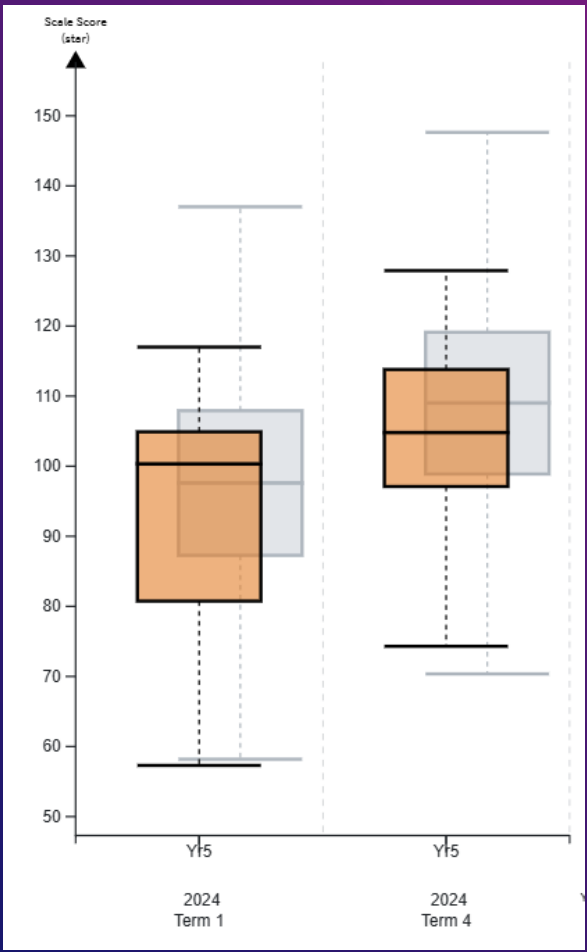


Year	Term	Year Level	Students (Completed)	Mean Scale Score	Standard Deviation	Highest Score	Upper Quartile	Median	Lower Quartile	Lowest Score
2024	Term 1	4	16/16	62.9 (81.4)	14.7 (16.3)	82.2 (123.4)	73.8(92.4)	64.0 (81.4)	52.3(70.4)	38.2 (39.4)
2024	Term 4	4	18/19	78.3 (97.6)	17.3 (15.3)	102.7 (137.0)	90.6(107.9)	78.9 (97.6)	70.4(87.3)	36.5 (58.2)

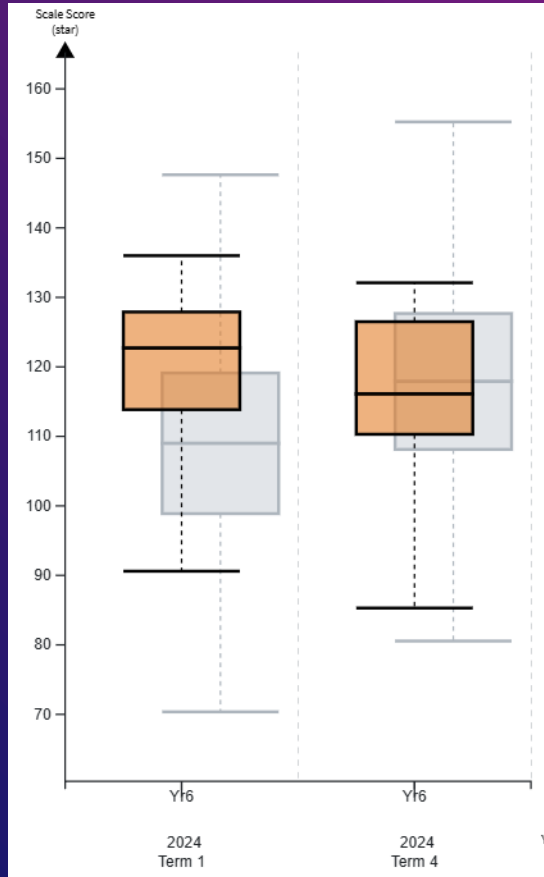


YEAR 5 STAR DATA

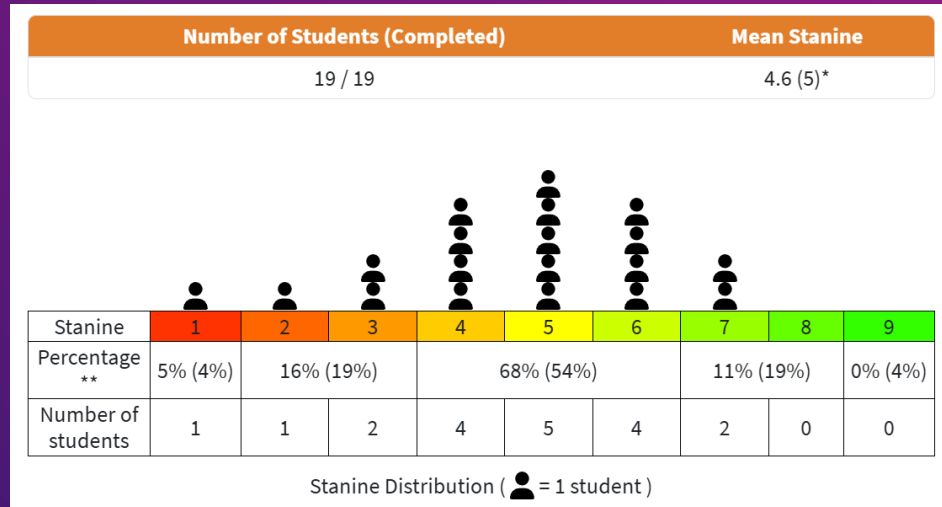
Year	Term	Year Level	Students (Completed)	Mean Scale Score	Standard Deviation	Highest Score	Upper Quartile	Median	Lower Quartile	Lowest Score
2024	Term 1	5	14/14	93.9 (97.6)	18.2 (15.3)	117.0 (137.0)	104.9(107.9)	100.3 (97.6)	80.8(87.3)	57.3 (58.2)
2024	Term 4	5	15/17	103.2 (109.0)	15.6 (15.0)	127.9 (147.6)	113.8(119.1)	104.8 (109.0)	97.1(98.9)	74.3 (70.4)

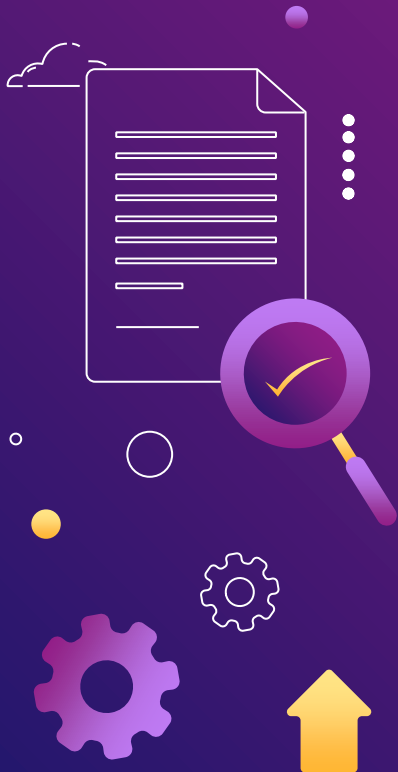


YEAR 6 STAR DATA



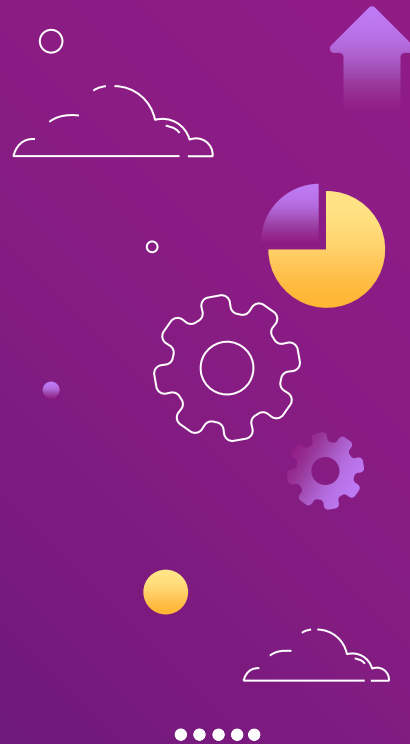
Year	Term	Year Level	Students (Completed)	Mean Scale Score	Standard Deviation	Highest Score	Upper Quartile	Median	Lower Quartile	Lowest Score
2024	Term 1	6	18/19	119.4 (109.0)	14.4 (15.0)	136.0 (147.6)	127.9(119.1)	122.7 (109.0)	113.8(98.9)	90.6 (70.4)
2024	Term 4	6	19/19	115.9 (117.9)	11.8 (14.5)	132.1 (155.2)	126.5(127.7)	116.1 (117.9)	110.3(108.1)	85.3 (80.6)





TUHITUHI

Writing





Whole School (Currently Enrolled in 2024) - Progress Overview - Writing (All Students)



WRITING				
	End 2021	End 2022	End 2023	End 2024
Well Above Expected Curriculum Level	2	1	1	0
Above Expected Curriculum Level	24	13	10	12
At Expected Curriculum Level	84	85	29	70
Towards Expected Curriculum Level	25	38	21	34
Needs Support To Work Towards Expected Curriculum Level	18	8	5	11
Total At Expected Curriculum Level or above	110 out of 153	99 out of 145	40 out of 66	82 out of 127
Percentage At Expected Curriculum Level or above	72%	68%	61%	65%



BREAKDOWN OF ACHIEVEMENT

	End Year 0	End Year 1	End Year 2	End Year 3	End Year 4	End Year 5	End Year 6	Totals	
Well Above Expected Curriculum Level								0	0.00%
Above Expected Curriculum Level	2	3	2	3	1		1	12	9.45%
At Expected Curriculum Level	8	12	13	17	6	8	6	70	55.12%
Towards Expected Curriculum Level		2	2	6	9	5	10	34	26.77%
Needs Support To Work Towards Expected Curriculum Level			1	1	3	4	2	11	8.66%
Totals	10	17	18	27	19	17	19	127	
	100%	88%	83%	74%	37%	47%	37%		

Comparison Information

Ethnicity: All

Year: 1, 2, 3, 4, 5, 6

Gender: All

Language: All

Cluster: All Clusters

NZ Performance: 

Location: All Schools

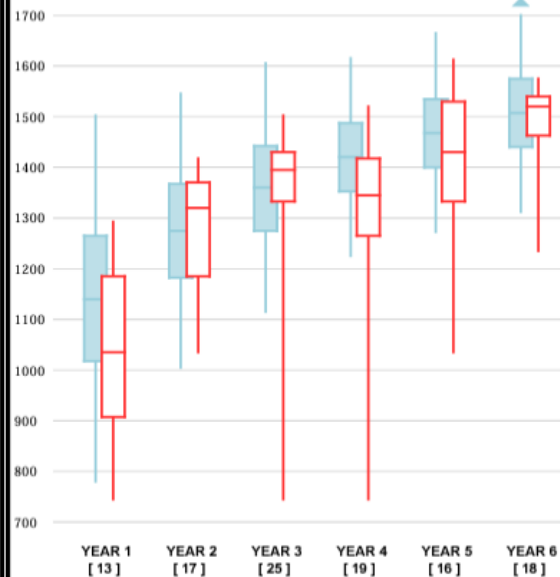
No. of Students: 108

Your Group Performance:  No. of Results: [n]

Curriculum Functions



Writing Scale



Attitude - General



Curriculum Functions



Note: Norms are not available for individual elements in Writing.



HANGANGA REO MATATINI

Structured Literacy





Whole School (Currently Enrolled in 2024) - Progress Overview - SL (All Students)



STRUCTURED LITERACY				
	End 2021	End 2022	End 2023	End 2024
Well Above Expected Curriculum Level			0	1
Above Expected Curriculum Level			1	8
At Expected Curriculum Level			23	42
Towards Expected Curriculum Level			37	13
Needs Support To Work Towards Expected Curriculum Level			0	35
Total At Expected Curriculum Level or above			24 out of 61	51 out of 99
Percentage At Expected Curriculum Level or above			39%	52%



BREAKDOWN OF ACHIEVEMENT

	End Year 0	End Year 1	End Year 2	End Year 3	End Year 4	End Year 5	End Year 6	Totals	
Well Above Expected Curriculum Level			1					1	1.01%
Above Expected Curriculum Level		1	7					8	8.08%
At Expected Curriculum Level	10	14	3	15				42	42.42%
Towards Expected Curriculum Level		2	4	7				13	13.13%
Needs Support To Work Towards Expected Curriculum Level			3	5	19	8		35	35.35%
Totals	10	17	18	27	19	8		99	
	100%	88%	61%	56%	0%	0%	0%		

Whole School Dibels data EOY 2024

Blue = Core Support, Negligible Risk

Green = Core Support, Minimal Risk

Orange = Strategic Support, Some Risk

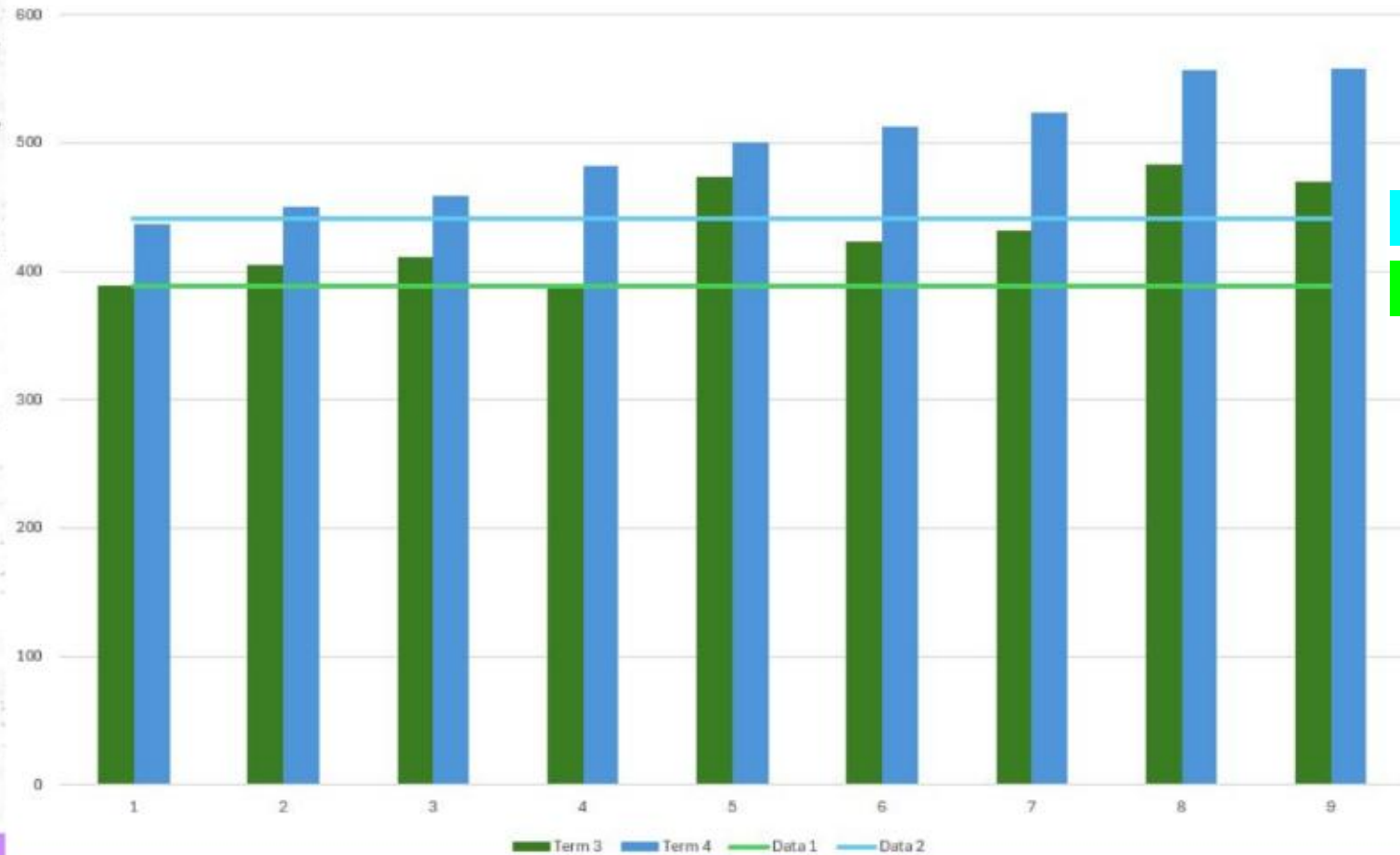
Red = Intensive Support, High Risk

Year 1							Year 2										Year 3									
42	44	31	7	10	420		59	45	55	15	25	39		91%	441		76	22	43	94		96%			9.5	439
LNF	PSF	NWF-CLS	NWF-WRC	WRF	Composite Score		LNF	PSF	NWF-CLS	NWF-WRC	WRF	ORF-Correct	ORF-Errors	Accuracy	Composite Score		NWF-CLS	NWF-WRC	WRF	ORF-Correct	ORF-Errors	Accuracy	Maze Correct	Maze Errors	Maze Calculated Score	Composite Score
0	4	0	0	0	353		30	17	25	6	9	8		100%	403		27	9	6	9	7	56%	0	1	-0.5	381
1	4	0	0	0	353		29	54	28	5	5	9		100%	405		47	14	7	6	6	50%	3	7	-0.5	387
2	6	7	0	0	361		54	30	27	9	8	9		100%	410		36	12	13	19	6	76%	0	1	-0.5	389
13	15	8	0	0	371		43	22	43	13	13	14		100%	418		48	16	9	23	2	92%	0	0	0	395
19	13	27	8	2	394		49	0	23	7	35	37		100%	425		44	17	17	28	6	82%	4	6	1	397
23	40	16	4	4	393		29	45	61	19	20	23		100%	430		44	13	17	30	7	81%	3	7	-0.5	397
15	30	24	7	2	393		54	35	63	19	21	28		100%	438		54	18	23	44	1	98%	5	0	5	408
31	27	17	3	4	394		51	42	72	19	36	63		100%	461		53	17	23	48	5	91%	4	3	2.5	409
28	32	22	3	5	399		60	53	129	42	66	148		100%	535		69	23	28	38	2	95%			0	412
16	27	31	7	3	400		69	51	50	16	25	36	2	95%	440		51	17	31	57	1	98%	4	4	2	413
25	42	22	9	3	401		68	68	78	26	24	29	2	94%	450		62	19	22	62	3	95%	2	8	-2	417
29	37	27	6	4	406		55	51	54	18	45	68	1	99%	459		44	18	25	78	1	99%	4	1	3.5	418
56	25	24	7	6	416		64	63	104	34	48	66	1	99%	483		64	21	23	73	1	99%	2	1	1.5	422
33	47	48	13	7	434		60	73	94	31	54	113	0	100%	501		62	19	28	75	1	99%	4	2	3	423
45	35	44	14	20	438		69	51	134	45	69	88	0	100%	513		74	24	26	65	1	98%	5	4	3	424
50	29	49	15	8	440		80	47	131	44	79	106	0	100%	524		64	18	45	98	1	99%	4	0	4	436
38	51	52	17	8	442		83	63	162	54	73	148	0	100%	557		63	21	60	104	0	100%	6	1	5.5	442
							88	62	168	56	74	143	0	100%	558		77	25	48	101	0	100%	11	3	9.5	444
																	63	21	80	148	0	100%	14	0	14	463
																	122	39	61	107	0	100%	9	0	9	466
																	108	35	59	123	0	100%	7	3	5.5	466
																	112	37	58	120	0	100%	13	0	13	466
																	119	40	59	121	0	100%	13	1	12.5	470
																	135	45	76	127	0	100%	10	0	10	482
																	157	51	76	123	0	100%	6	0	6	488
																	160	52	84	138	0	100%	11	0	11	497
																	179	58	100	165	0	100%	13	0	13	518

Year 4										Year 5										Year 6									
105	31	55	114		96%			16	442		125		96%			17	442		137		96%			21	449				
NWF-CLS	NWF-WRC	WRF	ORF-Correct	ORF-Errors	Accuracy	Maze Correct	Maze Errors	Maze Calculated Score	Composite Score		ORF-Correct	ORF-Errors	Accuracy	Maze Correct	Maze Errors	Maze Calculated Score	Composite Score		ORF-Correct	ORF-Errors	Accuracy	Maze Correct	Maze Errors	Maze Calculated Score	Composite Score				
34	10	0	8	7	53%	0	0	0	364		12	8	60%	6	13	-0.5	347		116	2	98%	20	1	19.5	314				
37	9	1	17	7	71%	1	7	-2.5	368		13	10	57%	2	2	1	348		55	6	90%	3	3	1.5	367				
33	10	3	22	5	81%	2	2	1	369		23	12	66%	5	4	3	356		66	1	99%	7	3	5.5	378				
32	7	9	35	7	83%	5	10	0	374		69	0	100%	11	0	11	395		81	0	100%	18	0	18	394				
82	24	6	6	107	5%	13	2	12	384		112	2	98%	15	1	14.5	431		101	0	100%	18	2	17	413				
36	12	12	65	2	97%	5	2	4	388		113	1	99%	11	1	10.5	431		100	1	99%	33	5	30.5	414				
35	9	19	66	3	96%	7	6	4	389		144	1	99%	17	1	16.5	458		103	0	100%	22	3	20.5	416				
30	13	26	75	0	100%	14	0	14	393		179	3	98%	21	5	18.5	487		106	1	99%	18	3	16.5	418				
51	15	31	64	3	96%	14	5	11.5	397		83	0	100%	9	2	8	406		112	0	100%	18	1	17.5	424				
61	18	24	61	6	91%	2	1	1.5	399		93	1	99%	8	3	6.5	414		116	1	99%	14	2	13	427				
71	19	26	68	5	93%	9	6	6	405		113	1	99%	13	2	12	432		118	2	98%	19	0	19	430				
77	24	28	73	1	99%	5	3	3.5	410		118	2	98%	13	2	12	436		121	0	100%	17	2	16	432				
61	19	47	85	5	94%	9	1	8.5	412		124	1	99%	17	1	16.5	441		123	1	99%	13	2	12	434				
113	38	53	97	1	99%			0	438		130	1	99%	24	2	23	447		124	0	100%	25	1	24.5	436				
92	30	61	120	1	99%	17	2	16	440		138	1	99%	21	0	21	453		130	1	99%	16	2	15	441				
132	41	73	114	3	97%	19	0	19	456										130	6	96%	21	6	18	441				
151	46	60	116	1	99%	16	0	16	462										133	1	99%	27	1	26.5	445				
184	56	105	171	1	99%	29	1	28.5	504										140	1	99%	27	2	26	452				
223	63	102	145	1	99%	22	3	20.5	509										164	2	99%	29	4	27	475				
																			173	2	99%	20	0	20	483				
																			180	0	100%	15	0	15	489				

The next few slides contain examples of Kererū's
SL data from this year using Dibels assessment.
This type of data will be available, whole school,
next year.

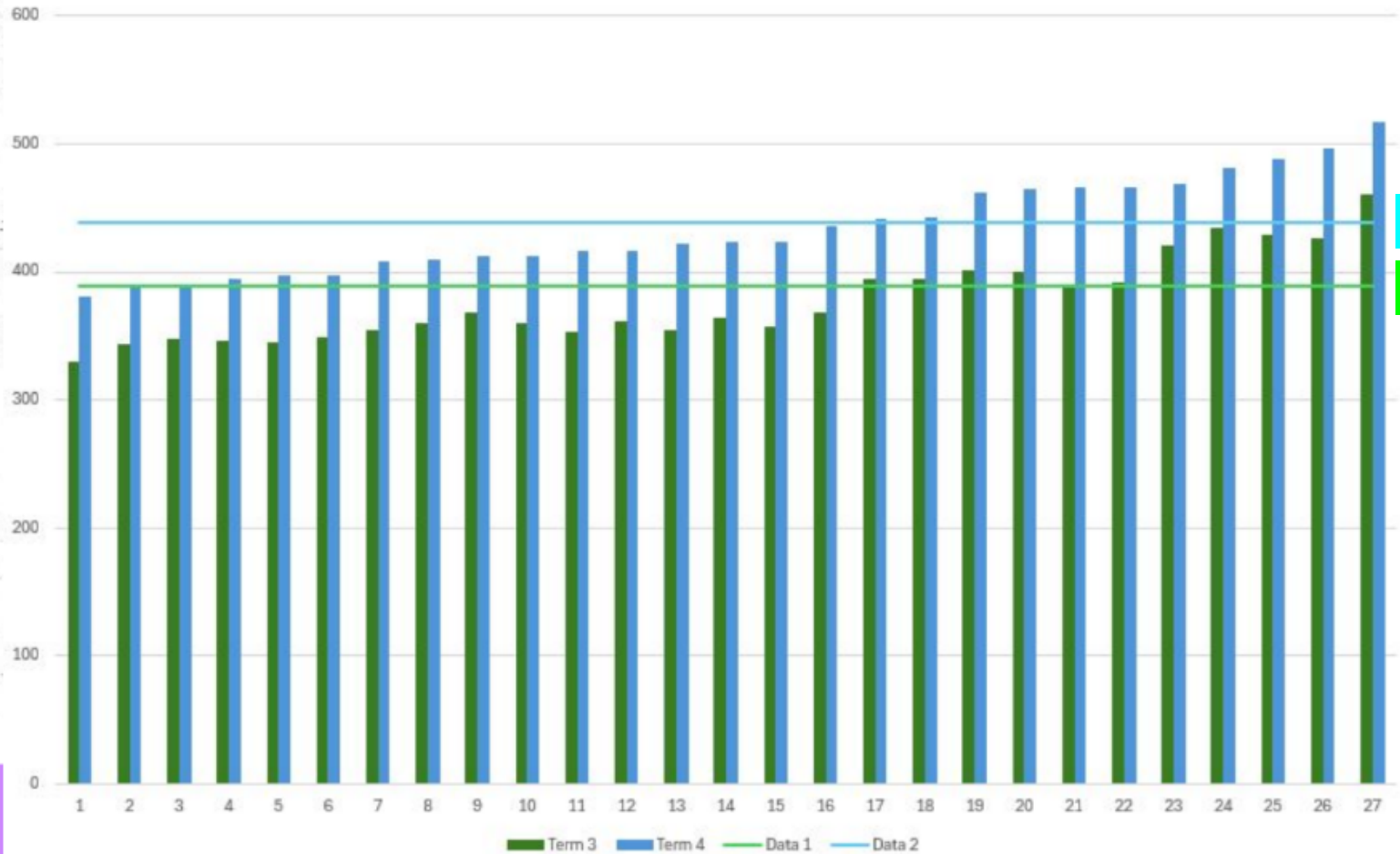
Year 2's



Expected Level End Year

Expected Level Mid Year

Year 3's

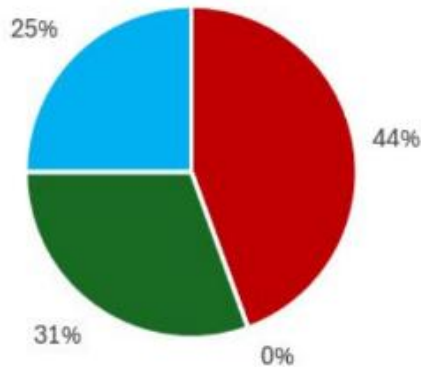


Expected Level End Year

Expected Level Mid Year

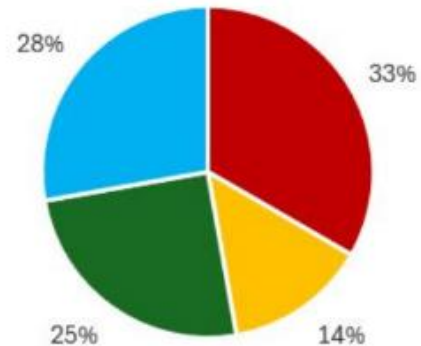
Overall Composite Scores

Term 3



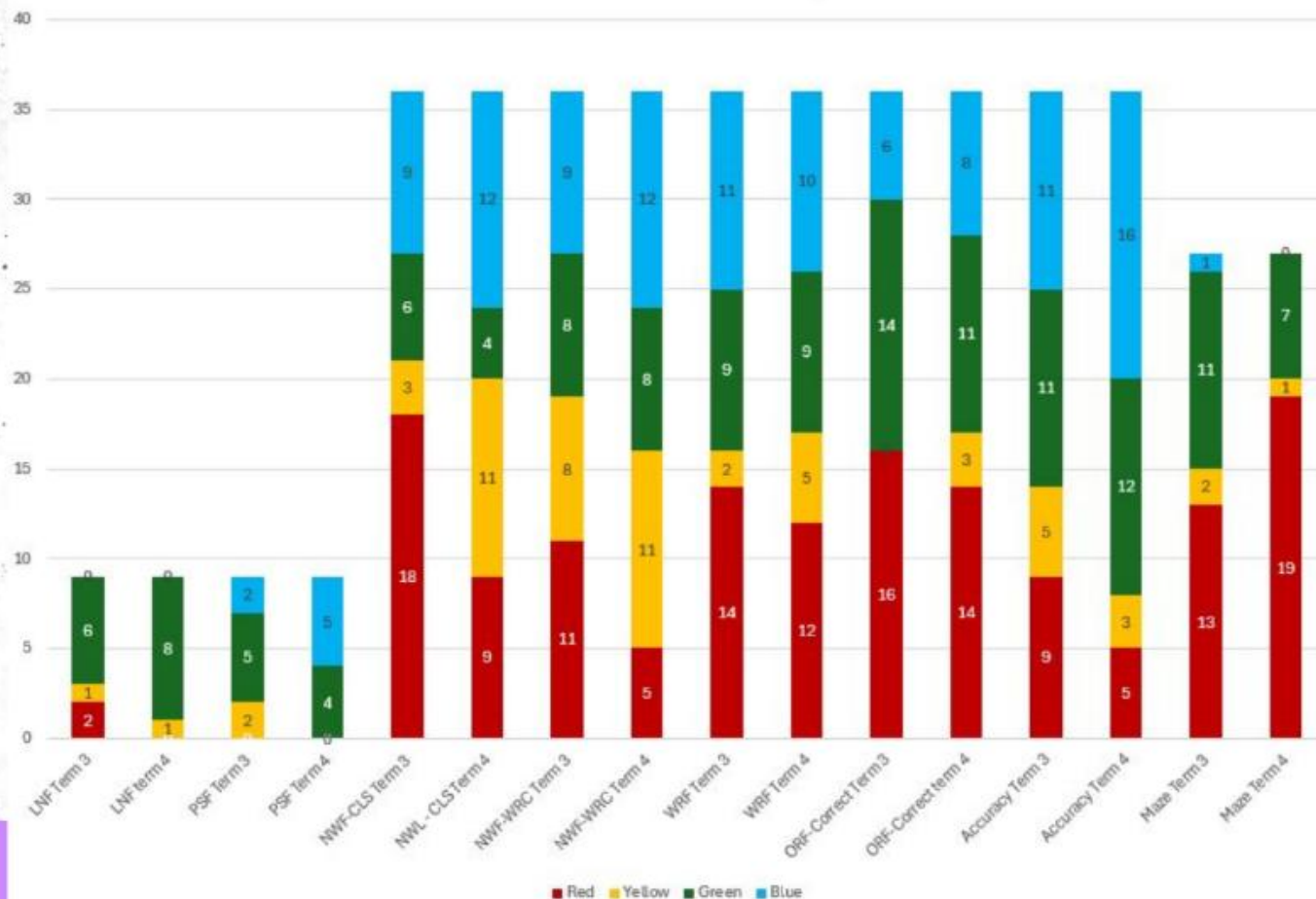
■ Red: Intensive support, High Risk ■ Yellow: Strategic support, Some Risk
■ Green: Core support, Minimal Risk ■ Blue: Core support, Negligible Risk

Term 4



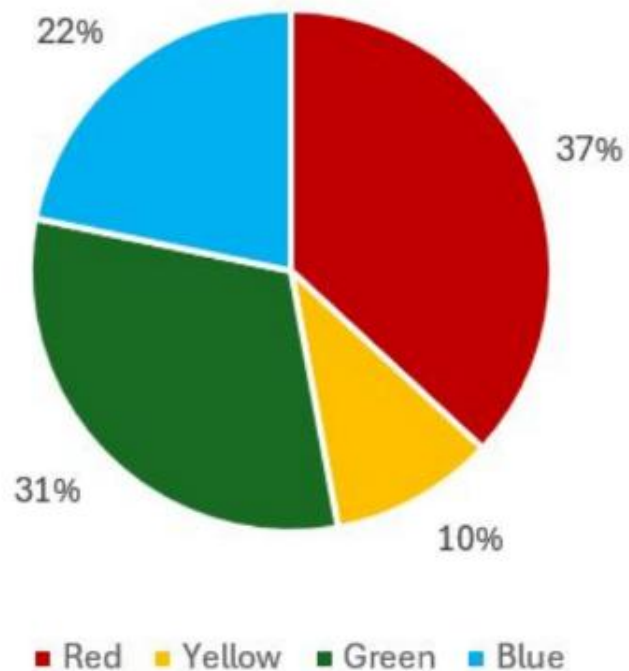
■ Red: Intensive support, High Risk ■ Yellow: Strategic support, Some Risk
■ Green: Core support, Minimal Risk ■ Blue: Core support, Negligible Risk

Each Assessment broken down by colour

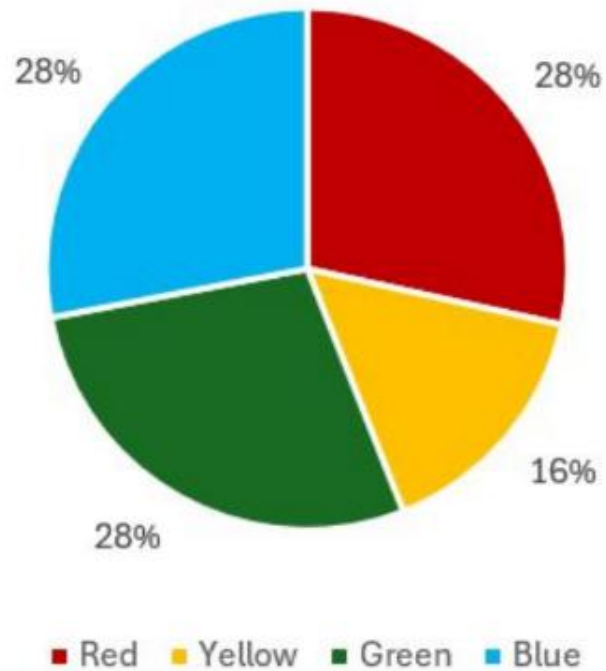


Broken down into each assessment

Term 3



Term 4

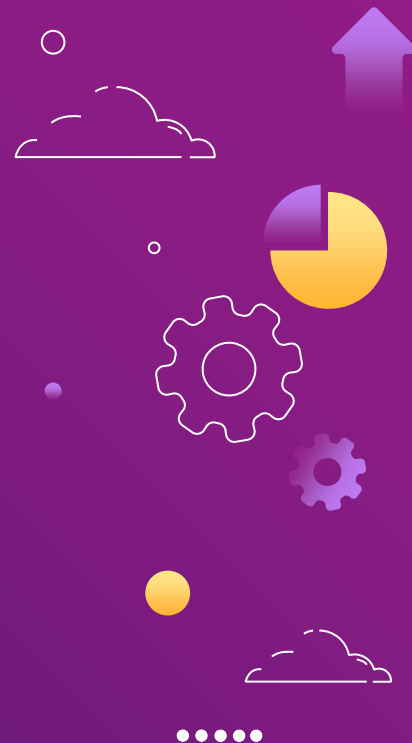
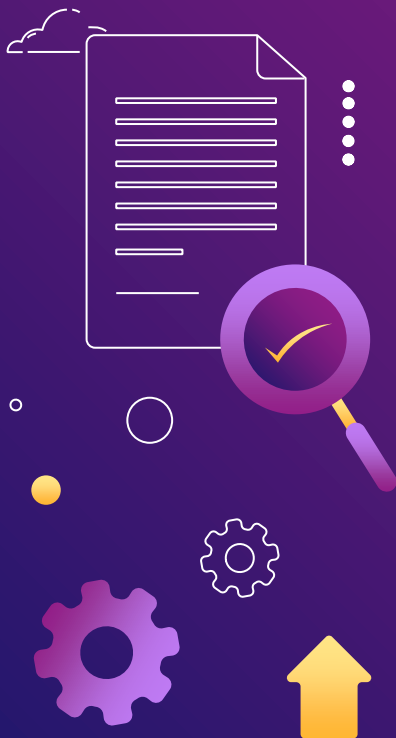




PĀNGARA

U

Maths





Whole School (Currently Enrolled in 2024) - Progress Overview - Maths (All Students)



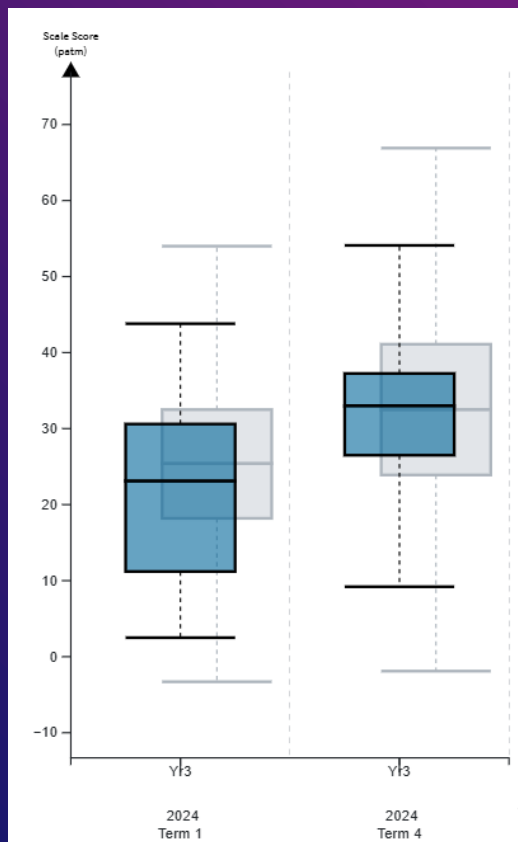
MATHS				
	End 2021	End 2022	End 2023	End 2024
Well Above Expected Curriculum Level	1	1	0	0
Above Expected Curriculum Level	26	26	17	13
At Expected Curriculum Level	85	82	74	73
Towards Expected Curriculum Level	27	32	38	30
Needs Support To Work Towards Expected Curriculum Level	11	6	4	11
Total At Expected Curriculum Level or above	112 out of 150	109 out of 147	91 out of 133	86 out of 127
Percentage At Expected Curriculum Level or above	75%	74%	68%	68%



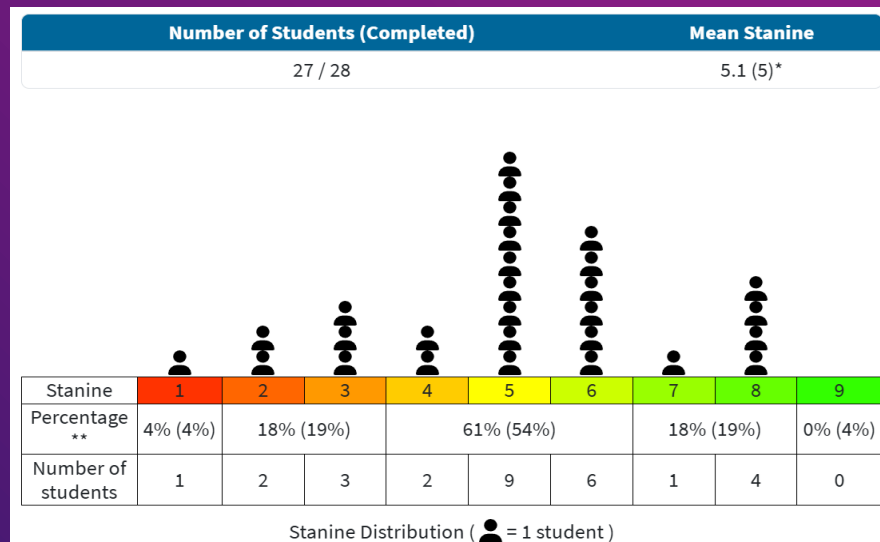
BREAKDOWN OF ACHIEVEMENT

	End Year 0	End Year 1	End Year 2	End Year 3	End Year 4	End Year 5	End Year 6	Totals	
Well Above Expected Curriculum Level								0	0.00%
Above Expected Curriculum Level	1	3	2	4	2		1	13	10.24%
At Expected Curriculum Level	9	10	15	19	6	9	5	73	57.48%
Towards Expected Curriculum Level		4		4	7	4	11	30	23.62%
Needs Support To Work Towards Expected Curriculum Level			1		4	4	2	11	8.66%
Totals	10	17	18	27	19	17	19	127	
	100%	76%	94%	85%	42%	53%	32%		

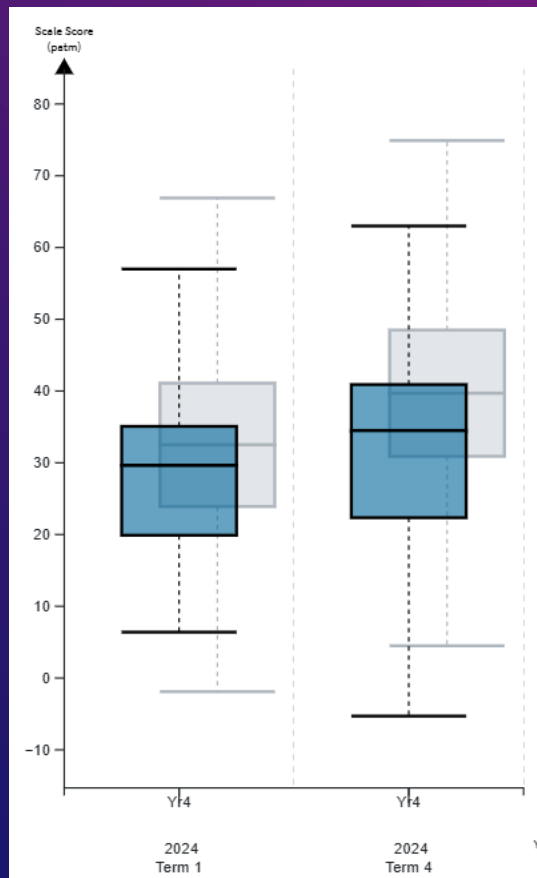
YEAR 3 PAT MATHS DATA



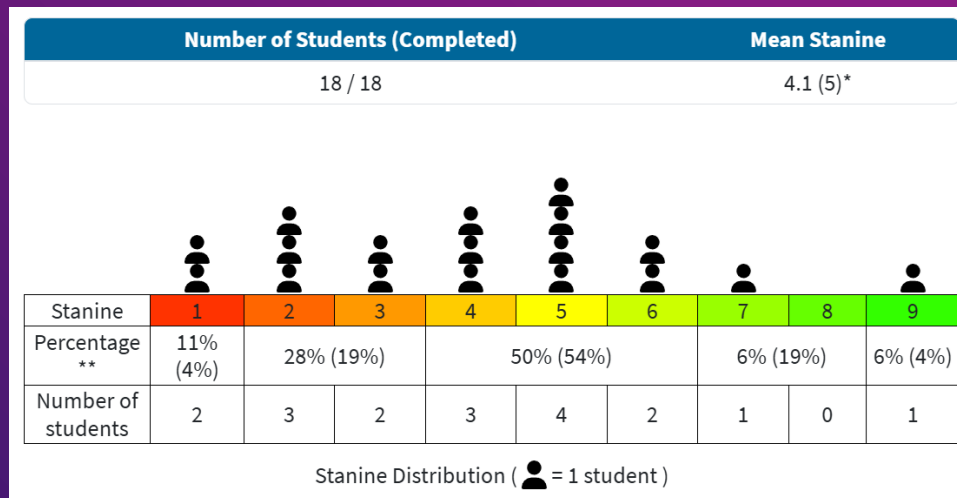
Year	Term	Year Level	Students (Completed)	Mean Scale Score	Standard Deviation	Highest Score	Upper Quartile	Median	Lower Quartile	Lowest Score
2024	Term 1	3	23/23	22.1 (25.4)	12.4 (10.6)	43.8 (54.0)	30.6(32.5)	23.1 (25.4)	11.2(18.2)	2.5 (-3.3)
2024	Term 4	3	26/27	32.0 (32.5)	11.2 (12.7)	54.1 (66.9)	37.3(41.1)	33.0 (32.5)	26.5(23.9)	9.2 (-1.9)



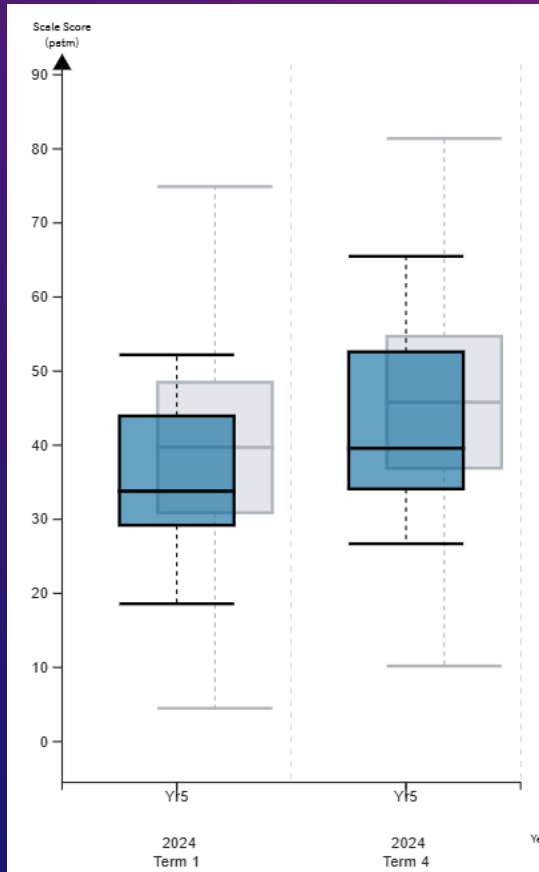
YEAR 4 PAT MATHS DATA



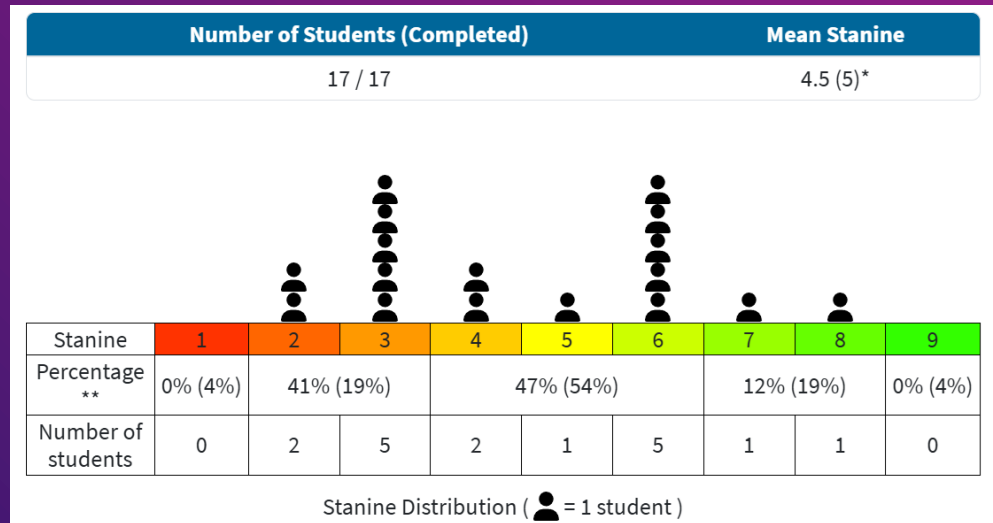
Year	Term	Year Level	Students (Completed)	Mean Scale Score	Standard Deviation	Highest Score	Upper Quartile	Median	Lower Quartile	Lowest Score
2024	Term 1	4	18/18	28.2 (32.5)	12.6 (12.7)	57.0 (66.9)	35.1(41.1)	29.6 (32.5)	19.9(23.9)	6.4 (-1.9)
2024	Term 4	4	19/19	31.7 (39.7)	16.2 (13.1)	63.0 (74.9)	40.9(48.5)	34.5 (39.7)	22.4(30.9)	-5.3 (4.5)



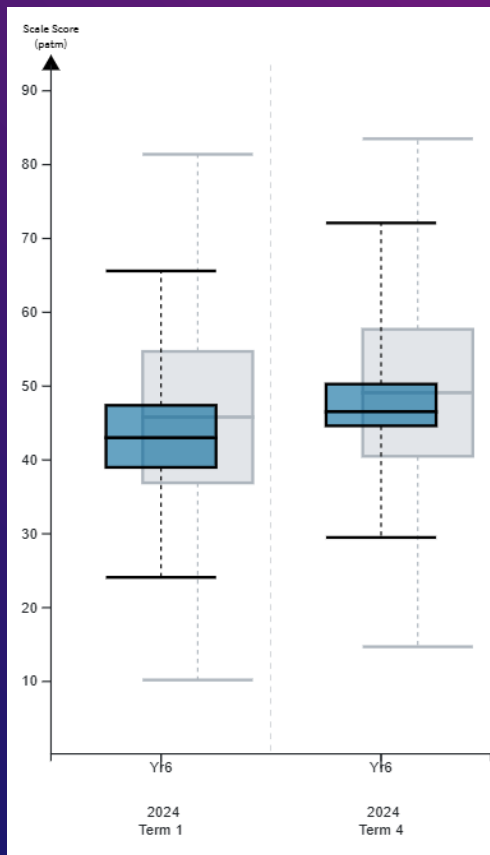
YEAR 5 PAT MATHS DATA



Year	Term	Year Level	Students (Completed)	Mean Scale Score	Standard Deviation	Highest Score	Upper Quartile	Median	Lower Quartile	Lowest Score
2024	Term 1	5	15/15	35.4 (39.7)	10.3 (13.1)	52.2 (74.9)	44.0(48.5)	33.8 (39.7)	29.2(30.9)	18.6 (4.5)
2024	Term 4	5	17/17	43.0 (45.8)	11.9 (13.2)	65.5 (81.4)	52.6(54.7)	39.6 (45.8)	34.1(36.9)	26.7 (10.2)



YEAR 6 PAT MATHS DATA



Year	Term	Year Level	Students (Completed)	Mean Scale Score	Standard Deviation	Highest Score	Upper Quartile	Median	Lower Quartile	Lowest Score
2024	Term 1	6	20/21	42.0 (45.8)	9.7 (13.2)	65.6 (81.4)	47.4(54.7)	43.0 (45.8)	39.0(36.9)	24.1 (10.2)
2024	Term 4	6	18/18	46.9 (49.1)	10.0 (12.7)	72.1 (83.5)	50.3(57.7)	46.5 (49.1)	44.6(40.5)	29.5 (14.7)

