



Target Students End of year Data 2020





Summary

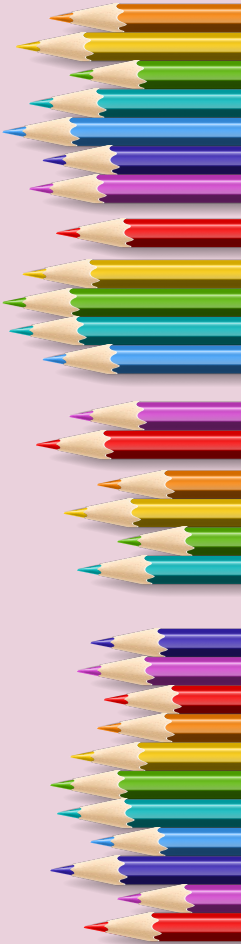
ETAP DATA

I have collated the data of our target students in our school management system to show 12 months progress from end of year 2019 to end of year 2020.

We have two sets of targets for each curriculum area of Reading, Writing and Maths

- ✘ Students we identified as achieving 'below' to shift to 'at' and
- ✘ Students achieving 'at' to shift to 'above.'

We will look at both groups within each curriculum area.



1. Let's start with the
'belows' to 'at' 





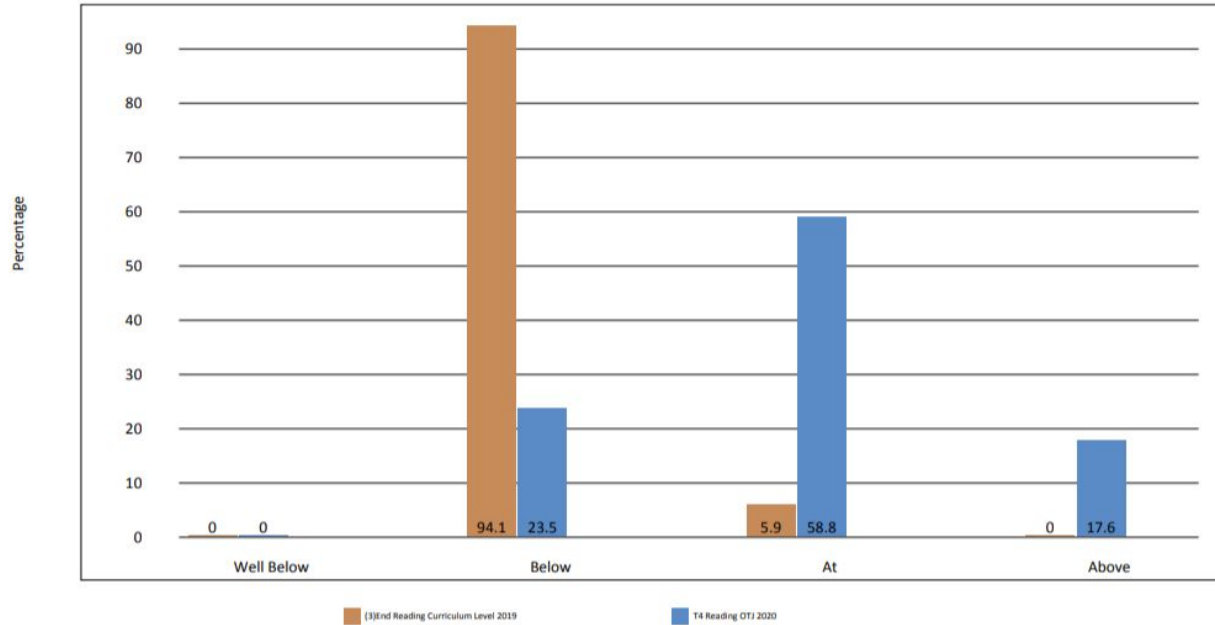
Birchville School

(3)End Reading Curriculum Level & T4 Reading OTJ 2019 - 2020

Cherie Toatoa Moonstone

Focus:

Targets:



Reading Targets- Below to At

“Overall shifts from End of 2019
to End of 2020”

	Below	At	Above
2019	94.1%	5.9%	0
No of Students	16	1	0
2020	23.5%	58.8%	17.6%
No of Students	4	10	3

Priority Learner Writing Targets 2019

10517	-1b	1b	1p	1a	2b	2p	2a	3b	3p	3a	4b	4p	4a	5b	5p	5a	Well Below	Below	At	Above	Total
Y0																					0
Y1		100% (6)																100% (6)			6
Y2			100% (7)															100% (7)			7
Y3				100% (6)														100% (6)			6
Y4					100% (5)													100% (5)			5
Y5						25% (2)	75% (6)											100% (8)			8
Y6																					0
Totals		18.8% 6	21.9% 7	18.8% 6	15.6% 5	6.3% 2	18.8% 6											100% 32			32

Writing OTJ T42020 Priority Learner Writing Targets

Priority Learner Writing Targets 2020

10741	-1b	1b	1p	1a	2b	2p	2a	3b	3p	3a	4b	4p	4a	5b	5p	5a	Well Below	Below	At	Above	Total
Y0																					0
Y1																					0
Y2			33% (2)	67% (4)																100% (6)	6
Y3				29% (2)	14% (1)	57% (4)												29% (2)	71% (5)		7
Y4					50% (3)	33% (2)	17% (1)													100% (6)	6
Y5						60% (3)	40% (2)											100% (5)			5
Y6					13% (1)	13% (1)	13% (1)	25% (2)		38% (3)								38% (3)	63% (5)		8
Totals			6.3% 2	18.8% 6	15.6% 5	31.3% 10	12.5% 4	6.3% 2		9.4% 3								31.3% 10	68.8% 22		32

Writing Targets- Below to At





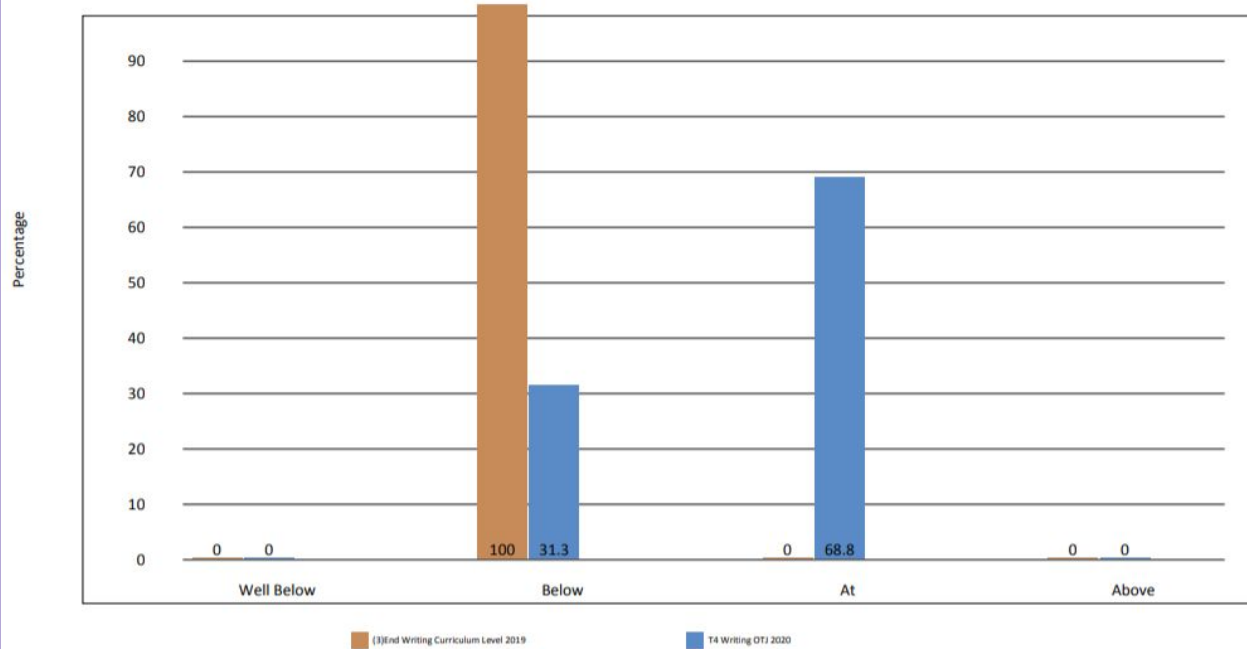
Birchville School

(3)End Writing Curriculum Level & T4 Writing OTJ 2019 - 2020

Cherie Toatoa Moonstone

Focus:

Targets:



Writing Targets- Below to At

“Overall shifts from End of 2019 to End of 2020”

	Below	At	Above
2019	100%	0	0
No of Students	32	0	0
2020	31.3%	68.8%	0
No of Students	10	22	0



Priority Learner Maths Targets 2019

10519	S0	S1	S2	S3	S4	S5E	S5	S6E	S6	S7E	S7	S8E	S8	Well Below	Below	At	Above	Total
Y0																		0
Y1		100% (8)													100% (8)			8
Y2			43% (3)	57% (4)											100% (7)			7
Y3				20% (1)	80% (4)										100% (5)			5
Y4						100% (7)									100% (7)			7
Y5						27% (3)	73% (8)								100% (11)			11
Y6																		0
Totals		21.1% 8	7.9% 3	13.2% 5	10.5% 4	26.3% 10	21.1% 8								100% 38			38

Maths OTJ T42020 Priority Learner Maths Targets

Priority Learner Maths Targets 2020

10742	S0	S1	S2	S3	S4	S5E	S5	S6E	S6	S7E	S7	S8E	S8	Well Below	Below	At	Above	Total
Y0																		0
Y1		100% (1)														100% (1)		1
Y2		14% (1)	29% (2)	57% (4)												100% (7)		7
Y3				100% (7)											100% (7)			7
Y4				40% (2)	20% (1)	40% (2)									40% (2)	60% (3)		5
Y5						43% (3)	57% (4)								43% (3)	57% (4)		7
Y6						9% (1)	36% (4)	55% (6)							9% (1)	91% (10)		11
Totals		5.3% 2	5.3% 2	34.2% 13	2.6% 1	15.8% 6	21.1% 8	15.8% 6							34.2% 13	65.8% 25		38

Maths Targets- Below to At





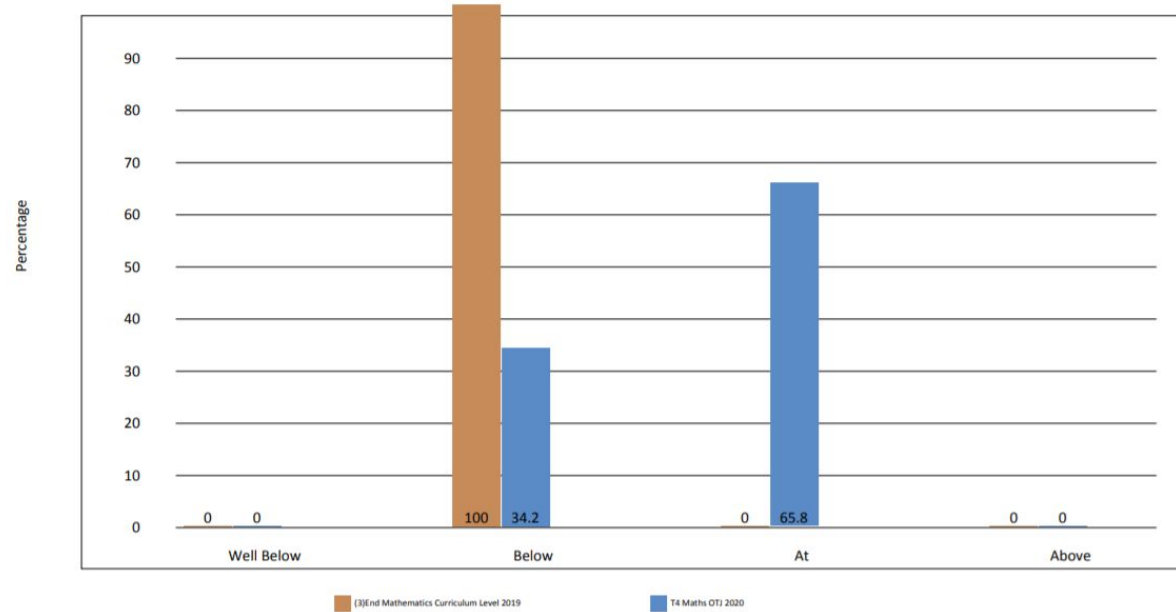
Birchville School

(3)End Mathematics Curriculum Level & T4 Maths OTJ 2019 - 2020

Cherie Toatoa Moonstone

Focus:

Targets:



Maths Targets- Below to At

“Overall shifts from End of 2019 to End of 2020”

	Below	At	Above
2019	100%	0	0
No of Students	38	0	0
2020	34.2%	65.8%	0
No of Students	13	25	0



2. Let's now look at the 'at' to shift to 'above' 🎯





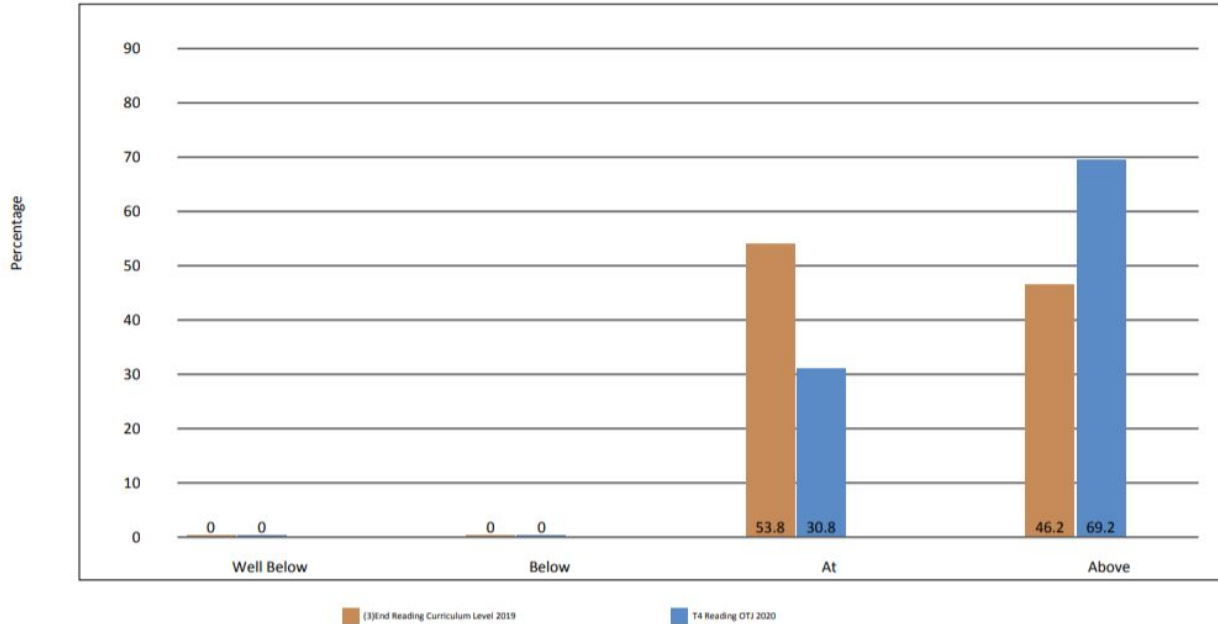
Birchville School

(3)End Reading Curriculum Level & T4 Reading OTJ 2019 - 2020

Cherie Toatoa Moonstone

Focus:

Targets:



Reading Targets- At to Above

“Overall shifts from End of 2019 to End of 2020”

	Below	At	Above
2019	0	53.8%	46.2
No of Students	0	7	6
2020	0	30.8%	69.2
No of Students	0	4	9



Target Writing 2020 at to above 2019

10517	-1b	1b	1p	1a	2b	2p	2a	3b	3p	3a	4b	4p	4a	5b	5p	5a	Well Below	Below	At	Above	Total
Y0																					0
Y1			100% (3)																100% (3)		3
Y2																					0
Y3																					0
Y4							100% (4)												100% (4)		4
Y5																					0
Y6																					0
Totals			42.9% 3				57.1% 4												100% 7		7

Writing OTJ T42020 Target Writing 2020 at to above

Target Writing 2020 at to above 2020

10741	-1b	1b	1p	1a	2b	2p	2a	3b	3p	3a	4b	4p	4a	5b	5p	5a	Well Below	Below	At	Above	Total
Y0																					0
Y1																					0
Y2			67% (2)	33% (1)															67% (2)	33% (1)	3
Y3																					0
Y4																					0
Y5								25% (1)	75% (3)										100% (4)		4
Y6																					0
Totals			28.6% 2	14.3% 1				14.3% 1	42.9% 3										85.7% 6	14.3% 1	7

Writing Targets- At to Above





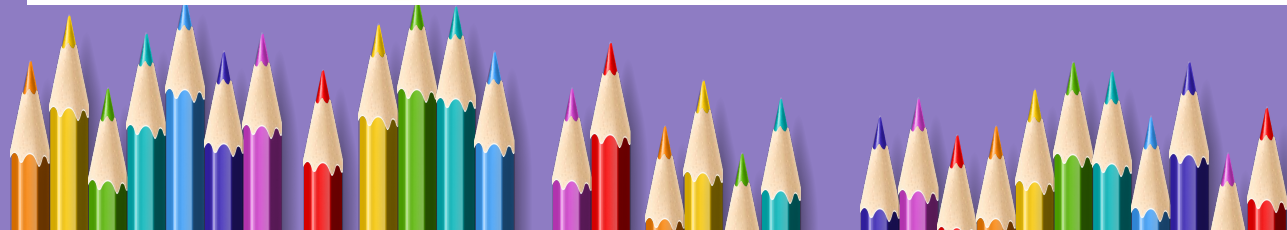
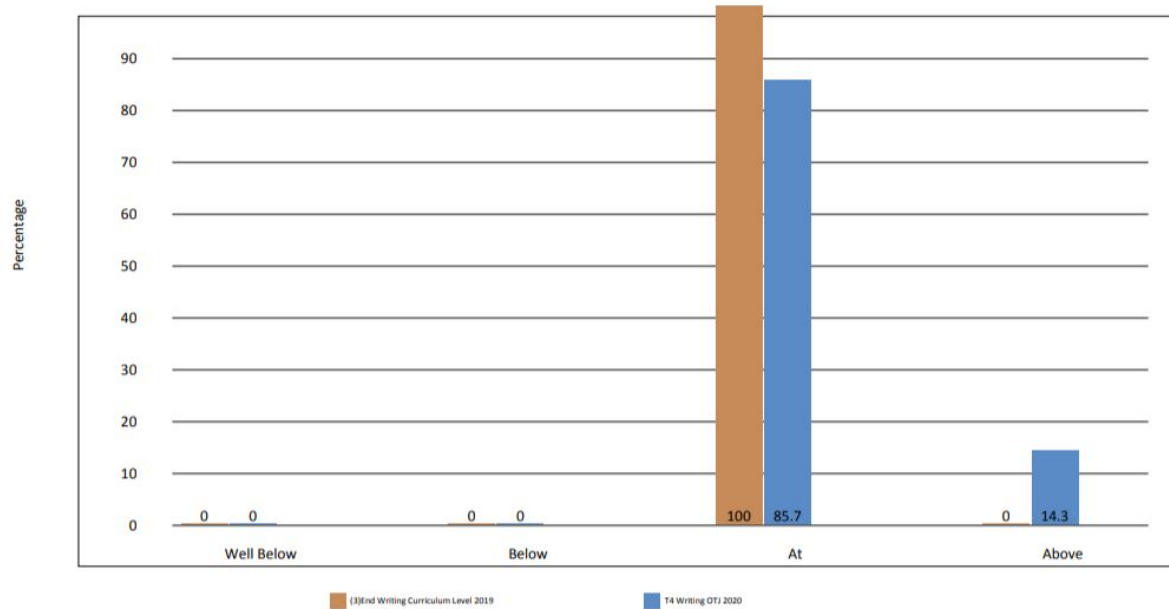
Birchville School

(3)End Writing Curriculum Level & T4 Writing OTJ 2019 - 2020

Cherie Toatoa Moonstone

Focus:

Targets:



Writing Targets- At to Above

“Overall shifts from End of 2019 to End of 2020”

	Below	At	Above
2019	0	100%	0
No of Students	0	7	0
2020		85.7%	14.3%
No of Students		6	1



Target Maths 2020 at to above **2019**

10519	S0	S1	S2	S3	S4	S5E	S5	S6E	S6	S7E	S7	S8E	S8	Well Below	Below	At	Above	Total
Y0																		0
Y1				100% (4)												100% (4)		4
Y2					100% (3)											100% (3)		3
Y3																		0
Y4																		0
Y5								86% (6)					14% (1)			86% (6)	14% (1)	7
Y6																		0
Totals				28.6% 4	21.4% 3			42.9% 6					7.1% 1			92.9% 13	7.1% 1	14

Maths OTJ T42020 *Target Maths 2020 at to above*

Target Maths 2020 at to above **2020**

10742	S0	S1	S2	S3	S4	S5E	S5	S6E	S6	S7E	S7	S8E	S8	Well Below	Below	At	Above	Total
Y0																		0
Y1																		0
Y2					100% (4)											100% (4)		4
Y3						67% (2)	33% (1)									100% (3)		3
Y4																		0
Y5																		0
Y6									14% (1)	57% (4)		14% (1)	14% (1)			14% (1)	86% (6)	7
Totals					28.6% 4	14.3% 2	7.1% 1		7.1% 1	28.6% 4		7.1% 1	7.1% 1			57.1% 8	42.9% 6	14





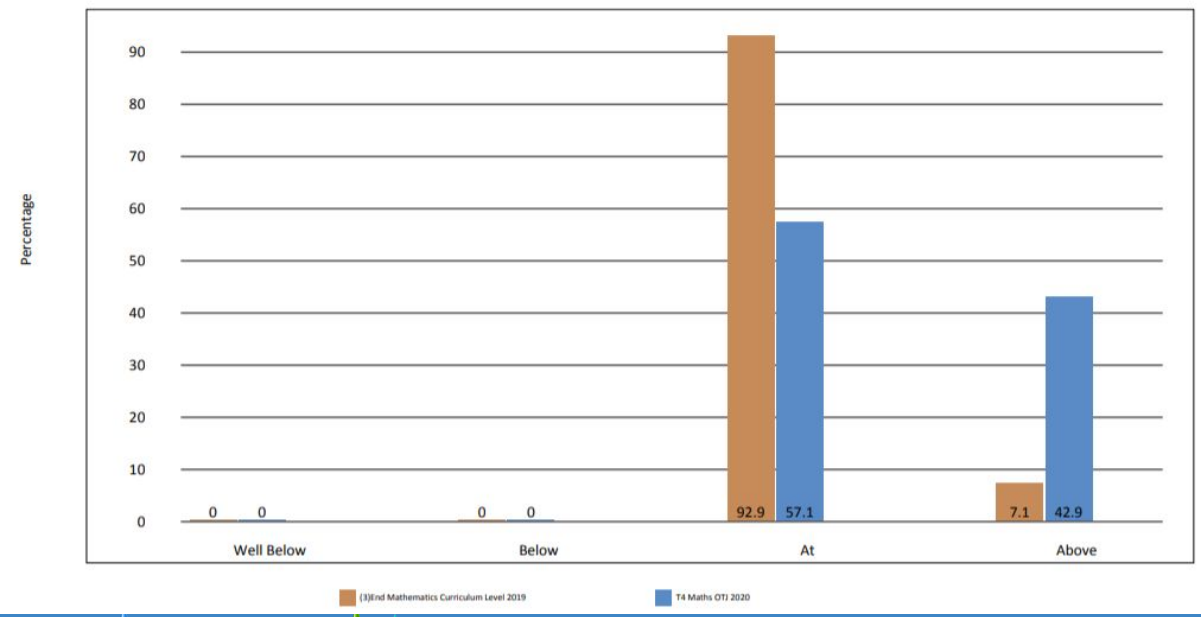
Birchville School

(3)End Mathematics Curriculum Level & T4 Maths OTJ 2019 - 2020

Cherie Toatoa Moonstone

Focus:

Targets:



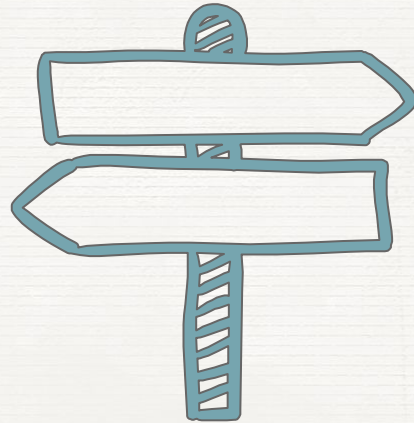
Maths Targets- At to Above

“Overall shifts from End of 2019 to End of 2020”

	Below	At	Above
2019		92.9%	7.1
No of Students		13	1
2020		57.1%	23.1%
No of Students		8	6



What does the
data tell us?



Targets from 'below' to 'at'

Below to At

Reading

Of the 16 students targeted across the school 13 students hit the target with 3 of those making accelerated progress and shifted to 'above'. That is great progress.

Writing

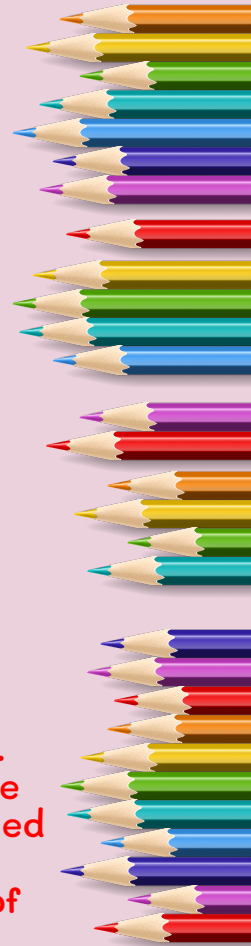
32 students were identified as below in writing at the end of 2019. 22 of those students have since shifted to at.

Maths



38 students were identified at the end of 2019 as achieving below in maths. End of 2020 25 of those students are now achieving at.

- ★ **Lot's of progress made across all three curriculum areas. Maths was our major focus so it is positive to see that the PLD is starting to shift data. Some of the gaps as identified by some teachers in maths have been due to covid and changes of teachers this year. Overall lot's to be proud of given the uncertainties throughout this year.**



Targets from 'at' to 'above'

At to Above

Reading

13 students targeted this year. All of these target students made progress this year. At the end of 2020 9 of these students are reading above.

Writing

7 students targeted for writing. All students have made progress. 1 shifted from at to above.

- ★ **Good progress across the board for these students. Once again Maths was our school focus so it is positive to see that nearly half of the targeted students in this group have shifted to above. All target students have made good progress.**

Maths

14 students targeted. 6 have moved to above.



Teachers have reflected on strategies used for each target group. Reflections can be found here..

Schoolwide Achievement Target students 2019- EMERALD TARGETS

These schoolwide targets have been submitted to the Ministry of Education and are in our Charter. Progress towards these will be reported on **each term** to the Board of Trustees. Each block will need to fill in termly progress overviews. Please ensure these are filled in as these will be used as platforms to report on progress of these target students. These target students will be discussed at Syndicate meetings, with SENCOM team and with SLT to evaluate programmes, interventions and progress. As their collaborative teacher's you will need to ensure:

- **Mileage** - These students need more opportunities to revisit learnt concepts and strategies than other students. This means more time with you every week.
- **Accelerated Progress** - To reach the schoolwide targets set you will need to accelerate these students progress, that is to say that they will need to make more than the expected progress in this area over the year. *This does not just happen*, it requires careful planning and targeted learning over time.
- **Differentiation and individualised learning** - These students will need activities and opportunities that are based on where they are at and what they need to move them forward. They need to be very clear on what they need to do (next steps) and be given opportunities for both success and challenge. *This means ensuring you know the child.*
- **Tracking and evidence** - You will need to have some robust systems in place for tracking and measuring progress. Discussions within your team around assessment analysis will inform your OTJ's and give you some sounding boards for moderation. Please ensure all your data is entered onto etap as per Assessment Schedule.
- **Sound Curriculum Knowledge** - To provide and achieve the above you must be clear on what it is that these students can do and what it is they need in order to make the required progress. If you are unclear on any part of the curriculum it is your responsibility to ask for help from your syndicate leader, the curriculum leader and or SLT. You may also need to seek PD or familiarise yourself with documents.

Please understand that as well as targeting these students in order to make accelerated progress and reach our achievement targets it is also paramount that you maintain or accelerate the progress rate of all other learners so as to keep our achievement on track.

Schoolwide Achievement Target students 2019- MOONSTONE TARGETS

These schoolwide targets have been submitted to the Ministry of Education and are in our Charter. Progress towards these will be reported on **each term** to the Board of Trustees. Each block will need to fill in termly progress overviews. Please ensure these are filled in as these will be used as platforms to report on progress of these target students. These target students will be discussed at Syndicate meetings, with SENCOM Team and with SLT to evaluate programmes, interventions and progress. As their collaborative teacher's you will need to ensure:

- **Mileage** - These students need more opportunities to revisit learnt concepts and strategies than other students. This means more time with you every week.
- **Accelerated Progress** - To reach the schoolwide targets set you will need to accelerate these students progress, that is to say that they will need to make more than the expected progress in this area over the year. *This does not just happen*, it requires careful planning and targeted learning over time.
- **Differentiation and individualised learning** - These students will need activities and opportunities that are based on where they are at and what they need to move them forward. They need to be very clear on what they need to do (next steps) and be given opportunities for both success and challenge. *This means ensuring you know the child.*
- **Tracking and evidence** - You will need to have some robust systems in place for tracking and measuring progress. Discussions within your team around assessment analysis will inform your OTJ's and give you some sounding boards for moderation. Please ensure all your data is entered onto etap as per Assessment Schedule.
- **Sound Curriculum Knowledge** - To provide and achieve the above you must be clear on what it is that these students can do and what it is they need in order to make the required progress. If you are unclear on any part of the curriculum it is your responsibility to ask for help from your syndicate leader, the curriculum leader and or SLT. You may also need to seek PD or familiarise yourself with documents.

Please understand that as well as targeting these students in order to make accelerated progress and reach our achievement targets it is also paramount that you maintain or accelerate the progress rate of all other learners so as to keep our achievement on track.

Schoolwide Achievement Target students 2019- SAPPHIRE TARGETS

These schoolwide targets have been submitted to the Ministry of Education and are in our Charter. Progress towards these will be reported on **each term** to the Board of Trustees. Each block will need to fill in termly progress overviews. Please ensure these are filled in as these will be used as platforms to report on progress of these target students. These target students will be discussed at Syndicate meetings, with SENCOM Team and with SLT to evaluate programmes, interventions and progress. As their collaborative teacher's you will need to ensure:

- **Mileage** - These students need more opportunities to revisit learnt concepts and strategies than other students. This means more time with you every week.
- **Accelerated Progress** - To reach the schoolwide targets set you will need to accelerate these students progress, that is to say that they will need to make more than the expected progress in this area over the year. *This does not just happen*, it requires careful planning and targeted learning over time.
- **Differentiation and individualised learning** - These students will need activities and opportunities that are based on where they are at and what they need to move them forward. They need to be very clear on what they need to do (next steps) and be given opportunities for both success and challenge. *This means ensuring you know the child.*
- **Tracking and evidence** - You will need to have some robust systems in place for tracking and measuring progress. Discussions within your team around assessment analysis will inform your OTJ's and give you some sounding boards for moderation. Please ensure all your data is entered onto etap as per Assessment Schedule.
- **Sound Curriculum Knowledge** - To provide and achieve the above you must be clear on what it is that these students can do and what it is they need in order to make the required progress. If you are unclear on any part of the curriculum it is your responsibility to ask for help from your syndicate leader, the curriculum leader and or SLT. You may also need to seek PD or familiarise yourself with documents.

Please understand that as well as targeting these students in order to make accelerated progress and reach our achievement targets it is also paramount that you maintain or accelerate the progress rate of all other learners so as to keep our achievement on track.

