



Apeiron
Scientific

info@apeironsci.com
www.apeironsci.com

VALVES



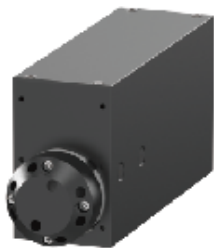
SELECTOR VALVE

Sample Specifications

Valve Type	ID (mm)	Threaded Connector	Max Pressure
Selector Valve, 8-Position	1.2	1/4-28 UNF	580 psi (4 MPa)
Selector Valve, 8-Position	1.2	10-32 UNF	580 psi (4MPa)
Selector Valve, 8-Position	1.5	1/4-28 UNF	435 psi (3MPa)
Selector Valve, 4-Position	3.2	1/2-20 UNF	145 psi (1MPa)
Selector Valve, 10-Position	1.5	1/4-28 UNF	145 psi (1MPa)

Key Features

- Used as inlet valve for multiple inputs to single output, or as outlet valve single input and multiple outputs
- Wetted Material: PEEK
- Communication Interface: RS232/RS485/CAN



THREE-COLUMN SELECTOR VALVE

Sample Specifications

Valve Type	ID (mm)	Threaded Connector	Max Pressure
Three-Column Valve	0.6	1/4-28 UNF	725 psi (5MPa)
Three-Column Valve	1	1/4-28 UNF	290 psi (2MPa)
Three-Column Valve	0.6	10-32 UNF	725 psi (5MPa)
Three-Column Valve	1	10-32 UNF	290 psi (2MPa)

Key Features

- Used in Chromatography Systems for connection of up to three columns, switching between columns, and reverse or bypass
- Wetted Material: PEEK
- Communication Interface: RS232/RS485/CAN



INJECTION VALVE

Sample Specifications

Valve Type	ID (mm)	Threaded Connector	Max Pressure
Selector Valve 3 Positions / 7 Ports	0.6	10-32 UNF	1450 psi (10MPa)
Selector Valve 3 Positions / 7 Ports	1.2	10-32 UNF	580 psi (4MPa)

Key Features

- Used for as injection valve or as single column valve, through different tube connection
- Wetted Material: PEEK
- Communication Interface: RS232/RS485/CAN



pH VALVE

Sample Specifications

Valve Type	ID (mm)	Threaded Connector	Max Pressure
pH Valve	1.2	10-32 UNF	70 psi (0.5MPa)

Key Features

- Used as the pH valve for the switching between back pressure mode, pH detection mode, both of these, pH verification/protection mode, and direct discharge mode
- Wetted Material: PEEK
- Sealing ring: Rubber
- Communication Interface: RS232/RS485/CAN



HIGH PRESSURE THREE-COLUMN SELECTOR VALVE

Sample Specifications

Valve Type	ID (mm)	Threaded Connector	Max Pressure
Three-column Valve	0.6	10-32 UNF	20 (2900 psi)

Key Features

- Used in high pressure systems for connecting up to three columns, switching between columns, reverse, bypass, and closed-loop control
- Wetted Material: 316K/TC4, stator PEEK, rotor PEEK/316L/TC4/ceramic
- Communication Interface: RS232/RS485/CAN



HIGH PRESSURE INJECTION VALVE

Sample Specifications

Valve Type	ID (mm)	Threaded Connector	Max Pressure
Injection Valve 3 Positions / 7 Ports	0.6	10-32 UNF	6000 psi (42MPa)
Injection Valve 3 Positions / 7 Ports	0.3	10-32 UNF	9000 psi (62MPa)
Injection Valve 2 Positions / 6 Ports	0.6	10-32 UNF	6000 psi (42MPa)
Injection Valve 2 Positions / 6 Ports	0.3	10-32 UNF	9000 psi (62MPa)

Key Features

- Used in high pressure systems as injection valve or (for 3 positions) as single column valves, and it can achieve closed-loop control
- Wetted Material: 316K/TC4, stator PEEK, rotor PEEK/316L/TC4/ceramic
- Communication Interface: RS232/RS485/CAN



PINCH VALVE

Sample Specifications

Valve Type	ID (mm)	Threaded Connector	Max Pressure
Pinch Valve	1/8 NPT	4.8 – 10 (70-145 psi)	12.7 / 6.4 / 3.2 *
Pinch Valve	1/8 NPT	4.8 – 10 (70-145 psi)	12.7 / 9.5 / 1.6 **

*These are 1/2, 1/4, and 1/8 inch, respectively **Likewise, 1/2, 3/8, 1/16 inch.

Key Features

- Valve Body material either Aluminum alloy or stainless steel
- Can be either normally open or normally closed type; the latter can be equipped with an anti-pinch function
- Control the liquid circuit. Fast response, and no contact between the moving component and the medium