

Candi Kush

Sample 319-091222-061

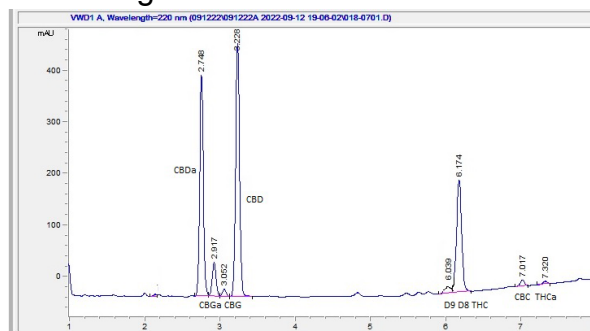
Blue Dream- Caviar Pre-Roll

Sample Submitted: 09-12-2022; Report Date: 09-12-2022

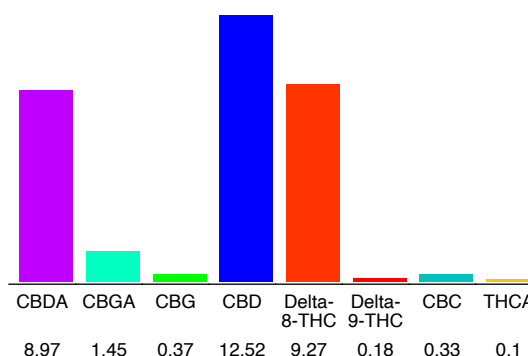
## Blue Dream- Caviar Pre-Roll

Plant Material

## Chromatogram



## Cannabinoid Profile



## Cannabinoid Profile by HPLC

0.27%

Calculated Delta-9-THC Yield

20.39%

Calculated CBD Yield

33.19%

Total Cannabinoids

Cannabinoid	% wt	mg/g
CBDA	8.97	89.7
CBGA	1.45	14.5
CBG	0.37	3.7
CBD	12.52	125.2
Delta-8-THC	9.27	92.7
Delta-9-THC	0.18	1.8
CBC	0.33	3.3
THCA	0.1	1.0
<b>Total Cannabinoids</b>	<b>33.19</b>	<b>331.9</b>
<b>Calculated Delta-9-THC Yield</b>	<b>0.27</b>	<b>2.68</b>
<b>Calculated CBD Yield</b>	<b>20.39</b>	<b>203.87</b>

Calculated Maximum Delta-9-THC Yield = Delta-9-THC + 0.877 \* THCA

Calculated Maximum CBD Yield = CBD + 0.877 \* CBDA

## Marin Analytics, LLC

250 Bel Marin Keys Blvd, Suite D4  
Novato, CA 94949

415-936-6477 / sarabiancalana1@gmail.com

Sara Biancalana  
Chief Scientist

This sample has been tested by Marin Analytics, LLC using valid testing methodologies and a quality system. Values reported relate only to the sample tested. Marin Analytics, LLC makes no claims as to the efficacy, safety or other risks associated with any detected or non-detected levels of any compounds reported herein. This Certificate shall not be reproduced except in full, without the written approval of Marin Analytics, LLC.