



# WVGW



**ANNUAL PRODUCTION SALE**  
**Bulls and Females**

**MARCH 27, 2024**

At the Ranch • 12:30 PM • Grass Range, Montana



*Raising Registered Red Angus Since 1976*



Vic & Shari Westphal  
 Box 72, Grass Range, Montana 59032  
 406-428-2179 Phone  
 406-428-2107 Sale Day Phone  
 406-366-4069 Cell



westphalredangus.com  
 email: westphal@midrivers.com



Welcome to our 2024 Sale!

We want to acknowledge our customer's hard work, resilience and dedication to this way of life. The hail, grasshoppers, drought, unreliable supply chain, and higher operating costs have left us all wondering, what's next? Hopefully rain, green grass and higher prices! Thank you for your business and friendship. You are so very much appreciated.

Our amazing mother cows continue to be the success factor in delivering healthy, heavy calves in the fall. We continue to appreciate the Red Angus convenience traits. These traits are critical in this unpredictable Montana environment. Our cattle will work in harsh conditions.

We believe the cattle industry must concentrate on balanced traits for their cattle. Here at Westphal Red Angus, that has always been our strategy. We have never chased one EPD over another, and in doing so, we have remained balanced. We believe in balanced traits in birth weight, weaning weight, yearling weight, milk and disposition will lead to consistency in the cows, calves, bulls and into generations of cow families. This is evident in not only our bull battery both AI and natural but also in the multiple generation of VGW females. We believe our balanced approach will work for commercial and registered breeders alike. The strict standards that our cattle were held to in 1976 (when we started our Red Angus herd) are even more stringent today. Our cattle must perform on paper as well out in the pasture.

Our calves are truly an honest presentation. Meaning, they are parent identified, DNAed, and the bulls are semen checked BEFORE the sale. Structural sound feet are of utmost importance for us, and we believe you have the same requirements. Please know, our cow calf pairs never graze irrigated pasture, our calves are not crept fed, and our calves do not have their feet trimmed. We want you to know what you're getting - a quality product.

The Red Angus cattle are in demand with so many positives in which they contribute to all sectors of the cattle industry. The cattle have taken good care of us and will do the same for you. We are not only purebred breeders; we also sell calves by the pound. We know firsthand that our genetics will work in the "real world" environment. We know our bulls will work on your commercial cattle because we use them on our commercial herd.

Once again, we are offering heifers from the heart of our operation. One of our toughest days every year, is the day we sort heifers for the sale - such hard decisions. You will not be disappointed in the collection of heifers available on sale day and know that you will find them as wonderful as we do.

Vic is always talking about whether an animal passes the "pick-up test." We want our cattle to pass that test - are they physically correct, do they move well, do you enjoy looking at them? We know that you want that as well. We have the high quality and high-performance cattle you're looking for with heifer and cow bulls that pass the pick-up test. Our 2024 bull offering has a strong group of heifer bulls, with the calving ease you are looking for. The strength of our ranch depends on our ability to provide you with exceptional cattle, fresh genetics and reliable up-to-date decision-making information. Your success is our success! We strive to meet your needs and know you will find solution-based cattle at our sale on March 27, 2024.

Our greatest joy has been spending time with our grandchildren. Leah and AJ are growing up so fast (11 and 9 years old). Leah along with Axel will be playing basketball this year. Leah plays volleyball as well. She participated in sewing and cooking in 4-H this past year. Leah and Axel also enrolled in the beef 4-H project and took their first steers to the fair. The steer project is so much work, and we are proud of the job they did. Axel started shooting trap, sporting clays, and skeet. He has done very well. Leah and Axel also compete in the youth archery league in Lewistown. They are very good help and each have their respective jobs when we work cattle. Jenni is an intricate part in running the ranch. She continues working as a training and development consultant. Also, Brett and Jenni's ag and steel business, Hedman, Inc. has been a success and provides high quality solutions for the rancher, farmer, fencer, and welder. Trevor works at St Peter's Hospital in Helena. Vic has returned to one of his favorite places, the high school gym. He and Jenni are coaching high school girls' basketball. Shari continues her love of the ranch, animals, and fiber arts.

We look forward to seeing you! Come check out the cattle and join us for lunch, and continued thank you for your support and business.

Sincerely,  
 Vic and Shari Westphal  
 Jenni, Brett, Leah and Axel Hedman



Vic & Shari



Brett, Jenni,  
 Leah & Axel Hedman

This sale will be broadcast live on the internet.

**DVAuction**  
 Broadcasting Real-Time Auctions

Visit [www.dvauction.com](http://www.dvauction.com) and Register!

For General Questions Please Contact Our Office:  
 (402) 316-5460 or [support@dvauction.com](mailto:support@dvauction.com)



# GENERAL INFORMATION



## CENTRAL MONTANA'S LEADING RED ANGUS SOURCE

### MARCH 27, 2024

12:30 PM Mountain Time • At the ranch • Grass Range, MT

Join us for a beef lunch at 11:30 AM.

### LOCATION - SALE SITE

The sale is held at our ranch, Grass Range, Montana. We are approximately four miles west of the Highway's 87-200-19 junction. Watch for ranch sign and turn north off Highway 87 into headquarters. **All Trailers please park on south side of highway.**

### AUCTIONEER

Ty Thompson ..... Billings, Montana

### SALE REPRESENTATIVES

Western Ag Reporter ..... John Goggins  
Western Livestock Journal ..... Devin Murnin  
Prairie Star/Farm & Ranch Guide ..... Jeff Thomas  
Red Angus Assn. .... Rachael Oliver

### INSURANCE

We recommend insuring your purchases at the sale. Please see Jeff Thomas or ask at clerk table about insurance coverage.

### SALE DAY PHONES

406-428-2179 ..... Westphal Main Land Line  
406-428-2107 ..... Sale Day Only Land Line  
406-366-4069 ..... Vic Westphal Cell Phone  
406-799-5200 ..... Dan Deichmann Cell Phone

### SALE MANAGEMENT

#### MARKETING & FEEDER PROCUREMENT



DEICHMANN LIVESTOCK BROKERAGE  
Dan & Marilyn Deichmann  
P.O. Box 310, Hobson, MT 59452  
406-423-5500 406-799-5200  
deichmannlivestock@gmail.com

### ACCOMMODATIONS

Lewistown is 26 miles west of our ranch. Lodging options:  
B&B Motel, 520 E Main St ..... 406/535-5496  
Calvert Hotel, 216 7th Ave S ..... 406/535-5411  
Super 8 by Wyndham, 102 Wendell Ave ..... 406/538-2581  
Yogo Inn, 211 E Main St ..... 406/535-8721

### SIGHT UNSEEN PURCHASE GUARANTEE

We are glad to take time to understand your needs and assist with sight-unseen guaranteed purchases. If you can't make it sale day please call Vic Westphal or Dan Deichmann. We'll bid on and purchase the best bulls or heifers possible for you. We'll let you know your purchases after the sale. If you're not satisfied at delivery, you don't own them!

### SELLING

A TOP OFFERING OF RED ANGUS SEEDSTOCK SELLS.

**102 Yearling Registered Bulls - 1A, 1B, CAT II**

*We are retaining 50% interest in each sale bull. Buyer(s) purchase 50% revenue-sharing interest and full possession in each bull. Full salvage value of bull goes to the Buyer(s).*

**42 Registered Open Heifers - 1A, 1B, CAT II**

**50 Commercial Open Heifers**

### SALE ORDER

Sale order will be available late in the day, Tuesday, March 26. It will be on our website: [www.westphalredangus.com](http://www.westphalredangus.com) or [www.dvauction.com](http://www.dvauction.com) website.

### SALE CATTLE LOCATION

The sale bulls and heifers may be seen at Boyce Feed Yard, 14 miles east of Lewistown on Hwy 87. They'll be there until early March 24, then at the ranch until sale day. Thank you to the crew at the feed yard for their excellent feeding and care of the sale offering.

### DELIVERY, LOADOUT & REBATES

We offer FREE DELIVERY ON ALL BULLS around Montana and to central points in adjoining states. All \$10,000 plus heifer purchases will be delivered free around Montana. All other heifer purchases will be delivered to central points at cost. All deliveries are at the buyer's risk. **WE OFFER \$100 PER HEAD PER BULL REBATE, AND \$25 PER HEAD PER HEIFER REBATE, ON PURCHASES TAKEN HOME BY BUYERS ON SALE DAY.** We ask that no cattle be loaded until the completion of the auction. Our crew will assist with load-out.

### HERD HEALTH

Dr. Paul Brady, Lewistown Vet Service, 406-538-3663

- All bulls have been fertility tested.
- All sale lots are tested BVD-PI negative.
- All registered cattle selling are sire identified.
- Registered sale offering has been GGP-LD 50K tested.



### TERMS & CONDITIONS

All cattle sell under the Terms & Conditions of the Red Angus Association of America.

### GUARANTEES, TRANSFERS, & CODES EXPLANATIONS

Breeding & specific guarantees – See page 2.  
Registration & transfers info – See page 2.  
EPD averages & ranges comparison – See page 2.  
Codes Explanations – See page 26.

### WESTPHAL HERD SIRES - SEMEN SALES

We offer semen on herd sires in our program. Contact us for information and semen pricing on any of our sires.

## VGW BULLS HAVE...

- BEEN FERTILITY TESTED AND PASSED A SEMEN TEST
- RECEIVED FOOT ROT AND WART VACCINE
- BEEN TESTED BVD-PI FREE
- SIRE IDENTIFICATION AND GPP-LD 50K TEST FOR ENHANCED EPDS
- FIRST SEASON BREEDING GUARANTEE
- SIGHT UNSEEN PURCHASE GUARANTEE
- FREE DELIVERY MONTANA & ADJOINING STATES OR REBATES



### FIRST SEASON BREEDING GUARANTEE - BULLS

All bulls are semen checked by a licensed veterinarian, are guaranteed breeders, and passed a fertility test. They are guaranteed breeders for the first 60-day breeding season only. This covers broken penis, disposition, or genetic structural feet or leg problems, verified by a written veterinarian statement within 15 days of loss of use. We reserve the right to a second opinion by a veterinarian of our choice. It does not cover injury or loss of use of a bull, if bull is turned in with other bulls prior to being turned out at the start of the first 60-day breeding season. As full resolution we will provide to Buyer a suitable replacement, or Buyer will receive credit minus salvage value of original bull, towards purchase of a bull in next year's sale.

**This guarantee does not cover death. Mortality insurance is available sale day.**

### FIRST SEASON BREEDING GUARANTEE - HEIFERS

All heifers sell guaranteed open. All are guaranteed to breed by natural service in the first 60-day breeding season, when exposed naturally to a sire known to be a breeder. If a heifer does not breed under these conditions, as full resolution, Buyer will receive credit minus salvage value of original heifer, towards purchase of a heifer in next year's sale. Guarantee is void if heifer is used in an embryo transplant or in-vitro fertilization program.

**This guarantee does not cover death. Mortality insurance is available sale day.**

### RAAA REGISTRY CERTIFICATE

Each registered animal selling will received a transferred RAAA registration paper, following full settlement. Deichmann Livestock completes transfers. Please call them at 406/423-5500 with questions.

## (Spring 2024) RAAA EPD AVERAGES AND RANGES COMPARED TO WESTPHAL AVERAGE EPDS.

EPDs are shown with each lot in the sale. The chart below shows the average and range of proven and opportunity sires on the current year RAAA Spring EPD Summary. Also shown are the same for all non-parent animals under two years of age. For your ease of comparison, the bottom highlighted EPDs are the average of our bulls selling in this year's sale. EPDs on each Lot are from the week of Feb. 19, 2024.

#### EPD AVERAGES AND RANGES FOR PROVEN AND OPPORTUNITY SIRES

	ProS	HB	GM	CED	BW	WW	YW	MK	ME	HPG	CEM	ST	MARB
Average:	89	53	35	13	-1.8	62	100	25	4	12	7	15	0.41
Range:	-102-234	-75-156	-75-159	-4-25	-13.1-9.7	-3-122	-14-211	-3-47	-38-37	-4-25	-6-20	-4-29	-0.60-1.93

#### EPD AVERAGES AND RANGES FOR NON PARENTS UNDER TWO YEARS OF AGE

	ProS	HB	GM	CED	BW	WW	YW	MK	ME	HPG	CEM	ST	MARB
Average:	92	55	37	13	-1.8	60	97	26	3	11	7	15	0.41
Range:	-108-249	-85-166	-50-182	-4-25	-12.0-11.0	0-117	0-184	0-45	-36-36	-1-38	-7-16	-4-28	-0.31-2.09

#### AVERAGE EPDS OF WESTPHAL RED ANGUS SALE BULLS

	ProS	HB	GM	CED	BW	WW	YW	MK	ME	HPG	CEM	ST	MARB
Average:	90	50	35	12	-1.1	74	118	30	8	12	7	15	0.48



**DEICHMANN LIVESTOCK BROKERAGE**  
 Dan & Marilyn Deichmann  
 P O Box 310 • Hobson, MT 59452  
 406-423-5500 • Cell 406-799-5200 • www.dlbbroker.com



**Dan Deichmann**

Welcome!

**Westphal Red Angus Sets the Standard.**

With over three decades purchasing Red Angus feeders with the Westphal genetic influence, it is obvious to note they continually demand the appreciation of feeders that buy them year after year. Results speak loudly, and premiums are paid when they are earned. The Westphal bulls certainly have earned the reputation of siring a premium product for every level of the business.

Every contract we write for Westphal influence feeder cattle is our endorsement and commitment to this program and the very best Red Angus we can deliver to the feeding community. With Westphal bulls, you're covered by the DLB marketing program to get top dollar for your investment. We encourage everyone to walk through the bull pens and evaluate one of the most complete, high quality sale offerings anywhere in the country. This sale offering continually adds a positive impact at the ranches who use VGW prefix sires, and in feed yards that purchase their calves and yearlings.

Feel free to call us to check on markets or visit about marketing decisions. Know your feeders will be presented to our large list of feedlot contacts. If we can assist in bull or heifer selections, feel free to contact us. Our sight unseen purchase guarantee is your assurance of getting prospects that work well in your herd. You can believe in the VGW prefix. These cattle are the real deal. We look forward to seeing you at Westphal's March 27.

Sincerely,  
 Dan Deichmann  
 Deichmann Livestock Brkg.

**Shipping Day**



Every ranch family looks forward to it. Shipping day is what commercial ranchers work toward year around. The goal is always outstanding, high quality feeders that "weigh up". Shipping day is the measuring stick for Westphal genetics. Our goal is to set a high bar for weaning weights and pounds on the trucks. Like our commitment to our registered herd, we're equally determined to produce top quality commercial cattle, that really do the job once they get to the feed yard. We utilize the same program basics to produce both our registered bulls and heifers, and our feeder steers and commercial heifers.



- What a herd sire prospect to start the bull offering with. 321 is the heaviest weaning prospect and a performance machine, with a 120 WWR and an 852 Adj WW, and a 119 YWR. The explosion of performance in this Amazing–Editor cross is what performance seekers want, and what scale watchers appreciate. He’s extra-long sided, deep ribbed, with proven production attributes from birth to weaning that are hard to find. His first calf heifer dam has a 108 MPPA, and his MGD is the dam of VGW Bumper Crop. Top 5% EPD’s: Sire - WW 2, YW 1, ADG 1, CW 5; Dam - HPG 5.
- 321 Top EPD %’s: WW 1, YW 1, ADG 1, MK 10, YG 10, CW 4, REA 10, Fat 2.
- VGW 1 generation first calf heifer dam. MPPA 108.



**LOT 1 - VGW AUTHENTIC 321**



**VGW AUTHENTIC 321**

**BULL**

Reg: 4767195 • VGW 321 • Clvd: 02-04-2023 • 100% 1A

BIEBER CL ATOMIC C218

**VGW AMAZING 117**

4428721 VGW MT-STAR 1971

VGW EDITOR 702

**VGW ED-PRINCENE 2167**

4428393 RED CROWFOOT PRINCENE 3222A

BW	DAM AGE	205 ADJ WT	PRJ SALE WT
83	2	852	1605

EPDs	
ProS	96
HB	42
GM	54
CED	13
BW	-0.1
WW	88
YW	146
MK	31
ME	11
HPG	12
CEM	6
ST	13
MARB	0.44/31
YG	-0.03/27
REA	0.38/32



**VGW MAJORITY 309**

**BULL**

Reg: 4767059 • VGW 309 • Clvd: 01-31-2023 • 100% 1A

3SCC DOMAIN A163

**BLL A163 MINDBENDER 21H**

4348045 BLL MS SUN KING 2F

5L THE REAL DEAL 1687-143B

**VGW RD-INDIGO 1910**

4142744 VGW JUB-INDIGO 1393

BW	DAM AGE	205 ADJ WT	PRJ SALE WT
86	4	744	1400

EPDs	
ProS	101
HB	40
GM	61
CED	9
BW	0.6
WW	78
YW	124
MK	28
ME	12
HPG	11
CEM	3
ST	16
MARB	0.81/34
YG	0.12/29
REA	0.13/33

- A power house herd sire prospect. Note the length of side, immense volume, and strong top. He has a straight topline, extra clean sheath, large testicles and the carcass and performance numbers are impressive on this Mindbender son. Weaning at 744 Adj, he’s masculine and thick, and one of the high marbling bulls in the offering. Top 20% EPD’s: Sire- 8 cat. Top 5% EPD’s: Dam- GM 5, YW 5, ADG 5.
- 309 Top EPD %’s: GM 10, WW 5, YW 6, ADG 10, Marb 4, CW 11.
- VGW 7 generation dam. MPPA 102.



**LOT 2 - VGW MAJORITY 309**

- Herd bull alert! Use whatever adjective you want for this Mindbender son. The 2nd high Adj WW at 849, WWR 118, Marshall 3100 is easy to look at, and you won't find another like him. He checks 9 boxes in the EPD's top 25% and had a YWR 115. If you want extra rib, perfect shape and a bull that can work both as a heifer bull or put pounds on as a performance bull, your search stops here. His Queen 1669 dam has the highest MPPA at 111, and she had a top seller in '23. Top 5% EPD's: Sire - WW 5, Marb 5; Dam - YW 4, ADG 4, MK 2, REA 2.
- 3100 Top EPD %'s: GM 14, WW 1, YW 1, ADG 1, MK 3, Marb 11, CW 14, REA 20.
- VGW 8 generation dam. MPPA 111.



**LOT 3 - VGW MARSHALL 3100**



**VGW MARSHALL 3100**

**BULL**

Reg: 4767137 • VGW 3100 • Clvd: 03-14-2023 • 100% 1A

3SCC DOMAIN A163

**BLL A163 MINDBENDER 21H**

4348045 BLL MS SUN KING 2F

LJC BLUE PRINT 513E

**VGW BP-QUEEN 2064**

4272587 VGW MEG-QUEEN 1669

BW	DAM AGE	205 ADJ WT	PRJ SALE WT
94	3	849	1580

EPDs	
ProS	77
HB	18
GM	59
CED	3
BW	2.9
WW	90
YW	148
MK	34
ME	13
HPG	13
CEM	1
ST	13
MARB	0.67/32
YG	0.03/28
REA	0.30/33



**VGW EDGE UP 3101**

**BULL**

Reg: 4766917 • VGW 3101 • Clvd: 03-14-2023 • 100% 1A

LJC ICEMAN 411D

**VGW CUTTING EDGE 807**

3973768 VGW FUS-STAR 1601

RED U-2 RECKONING 294C

**VGW RECK-PRIMROSE 1767**

3764399 VGW 905-PRIMROSE 1217

BW	DAM AGE	205 ADJ WT	PRJ SALE WT
79	6	780	1555

EPDs	
ProS	87
HB	50
GM	37
CED	18
BW	-3.9
WW	72
YW	119
MK	30
ME	12
HPG	12
CEM	11
ST	14
MARB	0.65/31
YG	0.21/28
REA	-0.17/34

- Cutting Edge 807 sired this tremendous prospect, and 3101 showcases deep volume and depth of rib, and is just a March 14 bull. Is this a herd bull prospect? Absolutely yes, and he puts together birth and calving ease, performance, mothering, and marbling top tier EPD's. He had a tremendous 780 Adj WW, WWR 109. From a super Primrose dam. Top 5% EPD's: Sire - CED 2, CEM 1.
- 3101 Top EPD %'s: CED 3, BW 15, WW 15, YW 15, ADG 19, MK 13, CEM 2, Marb 12.
- VGW 4 generation dam. MPPA 104.



**LOT 4 - VGW EDGE UP 3101**

- Alliance 318 is a feature you're sure to look at long and hard and note as "sure a top one" on his catalog page. He's a son of Amazing 117, our top seller in '22. Note this high volume beef machine, showcasing tremendous muscle and deep rib and quarter. Adding to his praises are great feet and legs, strong testicle development and Top 1% WW, YW & ADG. His Firefly dam stat's showcase a WWR 113, and a YWR 112. Top 5% EPD's: Sire - WW 2, YW 1, ADG 1, CW 5; Dam - WW 1, YW 2, ADG 5, MK 2.
- 318 Top EPD %'s: WW 1, YW1, ADG 1, MK 6, CW 4.
- VGW 7 generation first calf heifer dam. MPPA 102.



**LOT 5 - VGW ALLIANCE 318**



**VGW ALLIANCE 318**

BULL

Reg: 4767185 • VGW 318 • Clvd: 02-04-2023 • 100% 1A

BIEBER CLATOMIC C218

**VGW AMAZING 117**  
4428721

VGW MT-STAR 1971

VGW LOTTO 722

**VGW LOT-FIREFLY 2144**  
4428335

VGW WK-FIREFLY 1184

BW	DAM AGE	205 ADJ WT	PRJ SALE WT
83	2	753	1470

EPDs	
ProS	85
HB	38
GM	48
CED	12
BW	-0.8
WW	94
YW	156
MK	32
ME	14
HPG	13
CEM	8
ST	12
MARB	0.38/33
YG	0.08/28
REA	0.23/32



**VGW AMBITION 358**

BULL

Reg: 4766837 • VGW 358 • Clvd: 02-13-2023 • 100% 1A

STRA GENERAL 882

**STRA ADMIRAL 0150**  
4331071

STRA BANDITO 8132

BROWN PREMIER X7876

**LSF SRR DORY-JIBA C5338**  
1744876

SRR DORY JIBA 9117-5036

BW	DAM AGE	205 ADJ WT	PRJ SALE WT
80	8	786	1420

EPDs	
ProS	106
HB	60
GM	46
CED	15
BW	-0.6
WW	86
YW	133
MK	31
ME	10
HPG	14
CEM	9
ST	14
MARB	0.48/34
YG	-0.03/29
REA	0.45/34

- Wow, what a herd sire prospect. Look at his numbers. 11 EPD categories in the top 25%. Ambition 358 looks like a star in the pens. Look at his long hip, long sides, masculine features, straight top and underline, and a correct set of feet and legs, just to name a few of his key features. He has exceptional carcass EPD %'s. 0150 is top 25% EPD's in 7 categories, and his dam has an amazing 15 EPD categories in the top 25%. Top 5% EPD's: Sire - WW 1, YW 3; Dam - ProS 2, GM 4, MK 2.
- 358 Top EPD %'s: WW 1, YW 2, ADG 10, MK 13, HPG 10, CEM 14, YG 11, CW 3, REA 6, Fat 5.
- Purchased dam. MPPA 104.



**LOT 6 - VGW AMBITION 358**



WESTPHAL  
7

**VGW ANCHOR 337**

**BULL**

Reg: 4766949 • VGW 337 • Clvd: 02-07-2023 • 100% 1A

STRA GENERAL 882

STRA ADMIRAL 0150

4331071

STRA BANDITO 8132

RED U-2 RECKONING 294C

VGW RE-SUNBURST 1865

3973384

5L SUNBUSRT 233-3355

BW	DAMAGE	205 ADJ WT	PRJ SALE WT
89	5	678	1335

- Here's a smooth, smooth prospect from an Admiral – Red U-2 Reckoning mating. Anchor 337 has an ultra-clean smooth front, impeccable top and underlines, and seamless tail placement, wide across the top of his quarter and deep into his lower quarter. He's one everyone comments on. Top 5% EPD's: Sire - WW 1, YW 3; Dam - ST 4.
- 337 Top EPD %'s: HB 17, WW 1, YW 4, HPG 20.
- VGW 1 generation dam. MPPA 97.

EPDs	
ProS	80
HB	68
GM	13
CED	11
BW	0.8
WW	86
YW	128
MK	25
ME	5
HPG	13
CEM	6
ST	16
MARB	0.38/33
YG	0.16/28
REA	-0.10/34



**LOT 7 - VGW ANCHOR 337**

WESTPHAL  
8

**VGW LOGIC 301P**

**BULL**

Reg: 4767225 • VGW 301P • Clvd: 01-28-2023 • 99.9% 1B

VGW LOTTO 722

VGW LOGIC 121

4428707

VGW 446-DORA 1945

LASO FOUNDATION D168F

VGW FO-RED P2117

4428541

VGW FOR-RED P1710

BW	DAMAGE	205 ADJ WT	PRJ SALE WT
71	2	695	1320

- His gentle attitude will be the first trait you notice in this all-around Logic son, with extra length. He combines performance with milk and fertility, as well as carcass traits in a moderate sized prospect. Note his substance and red meat. Top 5% EPD's: Sire - HPG 4; Dam - YG 1, REA & Fat 2.
- 301P Top EPD %'s: WW 6, YW 8, ADG 14, MK 6, HPG 4, Marb 6.
- VGW 8 generation, first calf heifer dam. MPPA 103.

EPDs	
ProS	101
HB	57
GM	45
CED	13
BW	-2
WW	76
YW	122
MK	32
ME	6
HPG	16
CEM	7
ST	14
MARB	0.75/30
YG	0.04/27
REA	0.10/32



**LOT 8 - VGW LOGIC 301P**

WESTPHAL  
9

**VGW CLEVELAND 317**

**BULL**

Reg: 4766979 • VGW 317 • Clvd: 02-03-2023 • 100% 1A

RED U2 GENESIS 103G

RED TER-RON GW CLEVELAND 25J

4637765

RED TER-RON DIAMOND MIST 98G

5L BOURNE FIRE 5353-52C

VGW BF-FIREFLY 1863

3973664

VGW 554T-FIREFLY 1278

BW	DAMAGE	205 ADJ WT	PRJ SALE WT
88	5	714	1320

- Study this long sided Cleveland son with an ultra-correct, sound foundation. 317 is a smooth bull with a broad back, and he carries the style of his top-flight Firefly cow family dam. 1863 sold a son in our '23 sale and has two daughters retained in herd. She had a 108 WWR.
- 317 Top EPD %'s: CW 8, Fat 20.
- VGW 7 generation dam. MPPA 102.

EPDs	
ProS	56
HB	51
GM	5
CED	10
BW	0
WW	67
YW	103
MK	28
ME	3
HPG	11
CEM	5
ST	15
MARB	0.02/30
YG	0.14/26
REA	-0.04/31



**LOT 9 - VGW CLEVELAND 317**

WESTPHAL  
10

**VGW COLONEL 319**

**BULL**

Reg: 4767233 • VGW 319 • Clvd: 02-03-2023 • 100% 1A

SPUR FRANCHISE OF GARTON

HXC CHARTER 6610D

3547655 HXC 111Y

VGW EDITOR 702

VGW ED-ANK 2181

4428577 VGW MT-ANK 1789

BW	DAMAGE	205 ADJ WT	PRJ SALE WT
76	2	743	1465

- Is Colonel 319 your next herd sire? He puts performance, eye appeal and tremendous numbers together to be considered by everyone studying this offering. A Charter 6610D son out of an exciting first calf Editor 702 daughter, he'll live up to his accolades when you study him sale day. He's top 1% for Marbling. Top 5% EPD's: Sire - ProS 1, GM 1, ST 4, Marb 2, CW 3.
- 319 Top EPD %'s: ProS 11, GM 5, WW 3, YW 5, ADG 10, MK 13, Marb 1, CW 7.
- VGW 7 generation first calf heifer dam. MPPA 102.

EPDs	
ProS	127
HB	51
GM	75
CED	13
BW	-2.3
WW	80
YW	128
MK	31
ME	5
HPG	11
CEM	5
ST	16
MARB	0.90/34
YG	0.19/30
REA	-0.05/35



**LOT 10 - VGW COLONEL 319**

WESTPHAL  
11

**VGW ANSWER 320**

**BULL**

Reg: 4766943 • VGW 320 • Clvd: 02-04-2023 • 100% 1A

BIEBER CL ATOMIC C218

VGW AMAZING 117

4428721 VGW MT-STAR 1971

5L BOURNE 117-48A

VGW BO-DORY 1705

3764685 VGW 4ACES-DORY 1515

BW	DAMAGE	205 ADJ WT	PRJ SALE WT
82	6	711	1310

- This Amazing son is full of performance, sculpted muscle pattern, solid square stance. He's full of beef, has top flight carcass stats, is moderate sized, and resembles his Amazing 117 half-brothers. His attributes are only enhanced with top % EPD's in 12 widely diverse categories, and a top producing Dory cow family dam with 105 MPPA. Top 5% EPD's: Sire - WW 2, YW 1, ADG 1, CW 5; Dam - HPG 3.
- 320 Top EPD %'s: ProS 9, GM 4, WW 1, YW 1, ADG 2, MK 18, HPG 15, Marb 9, YG 5, CW 12, REA 3, Fat 14.
- VGW 9 generation dam. MPPA 105.

EPDs	
ProS	127
HB	54
GM	73
CED	13
BW	-1.7
WW	85
YW	140
MK	30
ME	6
HPG	14
CEM	7
ST	13
MARB	0.70/33
YG	-0.06/28
REA	0.53/32



**LOT 11 - VGW ANSWER 320**

WESTPHAL  
12

**VGW LOOKOUT 313**

**BULL**

Reg: 4766821 • VGW 313 • Clvd: 02-01-2023 • 100% 1A

VGW LOTTO 722

VGW LOGIC 121

4428707 VGW 446-DORA 1945

LSF JOURNEY 1169Y

VGW JOUR-DORY 13127

1689428 VGW M517-DORY 0640

BW	DAMAGE	205 ADJ WT	PRJ SALE WT
91	10	726	1415

- Certainly, a performance powerhouse, Lookout 313 is one we sure appreciate for his scope and red meat. His wide top emphasizes extra overall capacity and a long profile. He'll be stout and ready to head out to pasture and look just the same when you pull him at the end of breeding season. Top 5% EPD's: Sire - WW 4, MK 2.
- 313 Top EPD %'s: WW 6, YW 14, MK 2, HPG 6, ST 20, Marb 12.
- VGW 6 generation dam. MPPA 104.

EPDs	
ProS	87
HB	63
GM	24
CED	9
BW	1.1
WW	76
YW	114
MK	34
ME	9
HPG	15
CEM	5
ST	17
MARB	0.65/31
YG	0.13/27
REA	-0.03/32



**LOT 12 - VGW LOOKOUT 313**

WESTPHAL  
13

**VGW LOGIC 306P**

**BULL**

Reg: 4767033 • VGW 306P • Clvd: 02-05-2023 • 99.8% 1B

VGW LOTTO 722

VGW LOGIC 121  
4428707

VGW 446-DORA 1945

JACOBSON MOUTAINEER 5076

VGW MT-RED P1922  
4142490

VGW R667 RED P0803

BW	DAMAGE	205 ADJ WT	PRJ SALE WT
86	4	805	1475

- A 1B bull with massive capacity, and an 805 Adj WW. A son of Logic, he has female maker Beckton sires on both sides of his pedigree, and at weaning you'll appreciate his calves pushing down the scales. His dam sold a top son in 2023. Top 5% EPD's: Sire - WW 4, MK 2. Dam - WW 5, YW 3, ADG 2.
- 306P Top EPD %'s: WW 1, YW 1, ADG 1, MK 9, HPG 12, CW 5.
- VGW 7 generation dam. MPPA 103.

EPDs	
ProS	70
HB	25
GM	45
CED	11
BW	0.7
WW	93
YW	156
MK	31
ME	17
HPG	14
CEM	5
ST	12
MARB	0.47/30
YG	0.22/27
REA	0.08/31



**VGW LOGIC 121  
SIRE OF LOTS 12-13**

WESTPHAL  
14

**VGW EMBLEM 367**

**BULL**

Reg: 4766947 • VGW 367 • Clvd: 02-20-2023 • 100% 1A

VGW EMBLEM 963

VGW EMBLEM 190  
4428439

VGW 3156-STAR 1583

VGW DIRECT DRIVE 512

VGW DD-PRINCENE 1834  
3973364

RED CROWFOOT PRINCENE 3222A

BW	DAMAGE	205 ADJ WT	PRJ SALE WT
69	5	663	1330

- Emblem 367 is an efficient looking prospect with thickness and masculinity, and he walks out with deep quarter and pronounced muscle. He is styled much like his sire, who we sold in 2022. His MGD is the mother of herd sire Bumper Crop 510; we've retained five of her daughters.
- 367 Top EPD %'s: HB 14, CED 14, BW 19, HPG 4, CEM 13.
- VGW 1 generation dam. MPPA 101.

EPDs	
ProS	103
HB	72
GM	31
CED	16
BW	-3.4
WW	65
YW	106
MK	28
ME	3
HPG	16
CEM	9
ST	15
MARB	0.55/30
YG	0.14/26
REA	-0.24/30

WESTPHAL  
16

**VGW AMAZING 325**

**BULL**

Reg: 4767223 • VGW 325 • Clvd: 02-05-2023 • 100% 1A

BIEBER CL ATOMIC C218

VGW AMAZING 117  
4428721

VGW MT-STAR 1971

LELAND MARKSMAN 6629

VGW MK-ANK 2140  
4428539

VGW BO-ANK 1759

BW	DAMAGE	205 ADJ WT	PRJ SALE WT
69	2	707	1365

- The sire group sons are consistent, and 325 is heifer pasture ready, with outstanding 16 CED and -3.0 BW. His first calf heifer dam is from a feminine and productive cow family. Top 5% EPD's: Sire - WW 2, YW 1, ADG 1 MK 5; Dam - WW 2, YW 1, ADG 1, HPG 3, YG 3, REA 1.
- 325 Top EPD %'s: CED 10, WW 9, YW 4, ADG 2, MK 10, CEM 10, YG 17.
- VGW generation first calf heifer dam. MPPA 100.

EPDs	
ProS	77
HB	24
GM	53
CED	17
BW	-3
WW	75
YW	131
MK	31
ME	12
HPG	13
CEM	10
ST	10
MARB	0.51/32
YG	-0.01/29
REA	0.27/34

WESTPHAL  
15

**VGW APPROVAL 323**

**BULL**

Reg: 4767273 • VGW 323 • Clvd: 02-05-2023 • 100% 1A

BIEBER CL ATOMIC C218

VGW AMAZING 117  
4428721

VGW MT-STAR 1971

VGW LOTTO 722

VGW LO-HAZY 2108  
4428745

VGW DO-HAZY 1914

BW	DAMAGE	205 ADJ WT	PRJ SALE WT
80	2	751	1560

- With uniformity and consistency, we're offering this "amazing" set of Amazing 117 sons. 323 has a Lotto first calf heifer dam, and she has a first calf heifer dam. Cow family extraordinaire. With WW, YW and ADG EPD's in the top 1%, 323 is a powerhouse. Top 5% EPD's: Sire - WW 2, YW 1, ADG 1; Dam - YW 5, ADG 3, HPG 2.
- 323 Top EPD %'s WW 1, YW 1, ADG 1, MK 18, HPG 15, CW 9.
- VGW 8 generation first calf heifer dam. MPPA 102.

EPDs	
ProS	89
HB	38
GM	51
CED	15
BW	-1.7
WW	90
YW	149
MK	29
ME	12
HPG	14
CEM	8
ST	12
MARB	0.57/31
YG	0.18/28
REA	-0.02/33

WESTPHAL  
17

**VGW AMAZING 302P**

**BULL**

Reg: 4767275 • VGW 302P • Clvd: 02-01-2023 • 99.9% 1B

BIEBER CL ATOMIC C218

VGW AMAZING 117  
4428721

VGW MT-STAR 1971

VGW LOTTO 722

VGW LO-RED P2102  
4428749

VGW DO-RED P1905

BW	DAMAGE	205 ADJ WT	PRJ SALE WT
80	2	797	1480

- He weaned at a tremendous 797 Adj WW, and 302P is flat topped, with a deep, roomy middle, and large scrotal. Darker red in color; you're sure to find this 112 WWR prospect on sale day. Top 5% EPD's: Sire - WW 2, YW & ADG 1; Dam CED 2, HPG 2, CEM 2, MK 1.
- 302P Top EPD %'s: WW 2, YW 3, ADG 9, MK 5, HPG 19, CW 4, REA 20.
- VGW 8 generation, first calf heifer dam. MPPA 105.

EPDs	
ProS	65
HB	21
GM	44
CED	15
BW	-2.4
WW	85
YW	134
MK	32
ME	15
HPG	13
CEM	9
ST	9
MARB	0.52/31
YG	0.15/28
REA	0.29/34

WESTPHAL  
18

**VGW AMAZING 309P**

**BULL**

Reg: 4767265 • VGW 309P • Clvd: 02-12-2023 • 99.9% 1B

BIEBER CL ATOMIC C218

VGW AMAZING 117

4428721

VGW MT-STAR 1971

LELAND MARKSMAN 6629

VGW MA-RED P2106

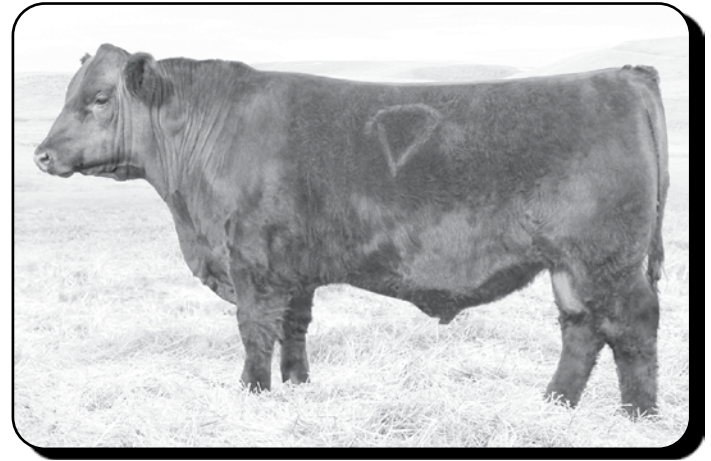
4428711

VGW IM-RED P1914

BW	DAMAGE	205 ADJ WT	PRJ SALE WT
83	2	790	1430

- With a 790 Adj WW, 111 WWR, evaluate 309P closely. An impressive bull, he walks out easily with performance and MK EPD's at the top of the breed. The P2106 first calf heifer dam, 12 generations deep in VGW breeding, really did a great job. Top 5% EPD's: Sire - WW 2, YW 1, ADG 1; Dam - WW 2, YW 3, MK 2.
- 309P Top EPD %'s: WW 1, YW 1, ADG 1, MK 7.
- VGW 12 generation first calf heifer dam. MPPA 104.

EPDs	
ProS	57
HB	16
GM	41
CED	11
BW	0.2
WW	88
YW	146
MK	32
ME	16
HPG	12
CEM	5
ST	11
MARB	0.43/32
YG	0.07/29
REA	0.16/34



**VGW AMAZING 117**  
**SIRE OF LOTS 15-20**

WESTPHAL  
19

**VGW AMAZING 333**

**BULL**

Reg: 4766923 • VGW 333 • Clvd: 02-07-2023 • 100% 1A

BIEBER CL ATOMIC C218

VGW AMAZING 117

4428721

VGW MT-STAR 1971

ANDRAS THUNDER A092

VGW TH-STAR 1745

3764459

VGW DD-STAR 1303

BW	DAMAGE	205 ADJ WT	PRJ SALE WT
84	6	688	1360

- If consistency is a breeding goal, look at the Amazing 117 sons. They have extra capacity and are performance plus prospects. They will put extra heavy calves on your feeder trucks. 333 has a square stance, and a wide, flat top that melds into a deep hind end and lower leg. He has smooth balanced dimension. Top 5% EPD's: Sire - WW 2, YW 1, ADG 1; Dam - WW 2.
- 333 Top EPD %'s: WW 1, YW 2, ADG 13, CW 10.
- VGW 11 generation dam. MPPA 95.

EPDs	
ProS	60
HB	42
GM	18
CED	11
BW	0.3
WW	88
YW	136
MK	27
ME	9
HPG	11
CEM	6
ST	14
MARB	0.36/33
YG	0.27/28
REA	-0.13/33

WESTPHAL  
21

**VGW JUDGEMENT 373**

**BULL**

Reg: 4767189 • VGW 373 • Clvd: 02-24-2023 • 100% 1A

KCC EAGER 525-715

JKW 001 JUDGE

4289259

JKW 1804 BRIDGET

VGW LOTTO 722

VGW LOT-DORY 2142

4428381

VGW U199-DORY 1358

BW	DAMAGE	205 ADJ WT	PRJ SALE WT
72	2	749	1420

- A Judge son, 373 has a moderate 72 BW and a herd-building 749 Adj WW, WWR 105. His first calf Dory dam outdid herself and has four top 5% EPD's. Judgement 373 is a dark red sire with more than his share of red meat deep down his side with a robust middle. Top 5% EPD's: Dam - WW 3, YW 4, MK 5, HPG 5.
- 373 Top EPD %'s: WW 12, YW 17, MK 6, HPG 15.
- VGW 10 generation first calf heifer dam. MPPA 102.

EPDs	
ProS	89
HB	64
GM	25
CED	14
BW	-2.5
WW	73
YW	116
MK	32
ME	10
HPG	14
CEM	8
ST	16
MARB	0.24/32
YG	0.04/28
REA	0.22/33

WESTPHAL  
20

**VGW ABSOLUTE 324**

**BULL**

Reg: 4767041 • VGW 324 • Clvd: 02-05-2023 • 100% 1A

BIEBER CL ATOMIC C218

VGW AMAZING 117

4428721

VGW MT-STAR 1971

3SCC DOMAIN A163

VGW DO-DOLL 1902

4142582

VGW FOR-DOLL 1752

BW	DAMAGE	205 ADJ WT	PRJ SALE WT
83	4	717	1335

- VGW Amazing 117 is living up to his name, and we're excited about his first sons. They're sure to sire steers that carry bred-in performance, and 324 shows off a wide smooth topline, clean front, and all-around balance we welcome. Top 5% EPD's: Sire - WW 2, YW 1, ADG 1, CW 5.
- 324 Top EPD %'s: WW 7, YW 12.
- VGW 7 generation dam. MPPA 103.

EPDs	
ProS	37
HB	23
GM	13
CED	13
BW	-1.2
WW	76
YW	119
MK	27
ME	12
HPG	12
CEM	6
ST	12
MARB	0.32/32
YG	0.10/28
REA	0.24/34

WESTPHAL  
22

**VGW JUDGE 364**

**BULL**

Reg: 4767231 • VGW 364 • Clvd: 02-19-2023 • 100% 1A

KCC EAGER 525-715

JKW 001 JUDGE

4289259

JKW 1804 BRIDGET

BIEBER CL ATOMIC C218

VGW AT-CHRSS 2112

4428575

VGW MT-CHRSS 1786

BW	DAMAGE	205 ADJ WT	PRJ SALE WT
73	2	722	1380

- Here's a heavy bull with a spread of 73 BW to 722 Adj WW. The Judge sons have great length front to back and 364 is full of red meat and performance capability. His calves will have those extra pounds at your shipping. Top 5% EPD's: YW 4, ADG 2, MK 4.
- 364 Top EPD %'s: CED 20, MK 6, CEM 10.
- VGW 9 generation first calf heifer dam. MPPA 100.

EPDs	
ProS	83
HB	50
GM	32
CED	15
BW	-2.5
WW	65
YW	102
MK	32
ME	10
HPG	11
CEM	10
ST	15
MARB	0.44/32
YG	0.06/27
REA	0.14/32

WESTPHAL  
23

**VGW JACK POT 361**

BULL

Reg: 4767197 • VGW 361 • Clvd: 02-15-2023 • 100% 1A

KCC EAGER 525-715

**JKW 001 JUDGE**

4289259

JKW 1804 BRIDGET

VGW LOTTO 722

**VGW LOT-DORY 2141**

4428395

VGW JOUR-DORY 13127

BW	DAMAGE	205 ADJ WT	PRJ SALE WT
71	2	735	1305

- If your goal is all-around balance, look at 361. Out of JKW 001 Judge, he is clean fronted with sturdy dimension and stature. His sire is a high production value bull with a 108 WWR and 107 YWR, and 7 top 25% EPD percent's. The Dory dam has 8 top 25% EPD's. Top 5% EPD's: Dam - MK 2.

- 361 Top EPD %'s: WW 2, YW 3, ADG 9, MK 4, HPG 13, CEM 17, REA 20.
- VGW 7 generation first calf heifer dam. MPPA 101.

EPDs	
ProS	100
HB	59
GM	41
CED	14
BW	-0.3
WW	84
YW	133
MK	33
ME	9
HPG	14
CEM	9
ST	14
MARB	0.41/31
YG	0.09/27
REA	0.29/32



**LOT 23 - VGW JACK POT 361**

WESTPHAL  
24

**VGW CUTTING EDGE 354**

BULL

Reg: 4767145 • VGW 354 • Clvd: 02-12-2023 • 100% 1A

LJC ICEMAN 411D

**VGW CUTTING EDGE 807**

3973768

VGW FUS-STAR 1601

C-T DOMINATE 7067

**VGW DOM-YOGO 2033**

4272599

VGW MER-YOGO 16101

BW	DAMAGE	205 ADJ WT	PRJ SALE WT
70	3	733	1355

- Very correct and balanced, this Cutting Edge son has a 733 Adj WW. He's slick-hided and can be a heifer bull prospect. His sire is known for calving ease, while his dam is a young, ten generation member of the Yogo cow family. Top 5% EPD's: Sire - CED 2, CEM 1, Dam - WW 4, YW 5.

- 354 Top EPD %'s: CED 20, MK 10, CEM 17.
- VGW 10 generation dam. MPPA 103.

EPDs	
ProS	43
HB	39
GM	4
CED	15
BW	-3.1
WW	70
YW	108
MK	31
ME	11
HPG	13
CEM	9
ST	12
MARB	0.44/31
YG	0.22/28
REA	-0.35/32

WESTPHAL  
26

**VGW CUTTING EDGE 357**

BULL

Reg: 4766933 • VGW 357 • Clvd: 02-13-2023 • 100% 1A

LJC ICEMAN 411D

**VGW CUTTING EDGE 807**

3973768

VGW FUS-STAR 1601

VGW MERCY- MERCY 412

**VGW MER-MERCEDES 1784**

3764559

VGW SS-MERCEDES 1411

BW	DAMAGE	205 ADJ WT	PRJ SALE WT
84	6	685	1325

- A Cutting Edge son, 357 has top % EPD's of 10 ProS; 8 HB and 15 CED. We appreciate legacy cow families, and this 10th generation Mercedes adds consistent milk and forage ability to give successive generations adaptability in tough conditions. Top 5% EPD's: Sire - CED 2, CEM 1; Dam - ADG 5.

- 357 Top EPD %'s: ProS 10, HB 8, CED 15, WW 4, YW 1, ADG 1, MK 17, HPG 6, ST 16, Marb 20.
- VGW 11 generation dam. MPPA 104.

EPDs	
ProS	118
HB	77
GM	42
CED	15
BW	-2.4
WW	80
YW	138
MK	30
ME	9
HPG	15
CEM	9
ST	17
MARB	0.58/32
YG	0.20/28
REA	-0.14/33

WESTPHAL  
25

**VGW CUTTING EDGE 370**

BULL

Reg: 4767093 • VGW 370 • Clvd: 02-23-2023 • 100% 1A

LJC ICEMAN 411D

**VGW CUTTING EDGE 807**

3973768

VGW FUS-STAR 1601

3SCC DETAIL E87

**VGW DET-YUMA 2008**

4272391

VGW OLY-YUMA 1156

BW	DAMAGE	205 ADJ WT	PRJ SALE WT
72	3	727	1345

- Heifer bull deluxe; this Cutting Edge 807 son has top % EPD's, including CED and BW. He's a modest sized, square based prospect with great topline and even, level underline. 370 is deep middled with a tight sheath. Top 5% EPD's: Sire - CED 2, CEM 1.

- 370 Top EPD %'s: CED 2, BW 6, WW 14, YW 20, CEM 4, Marb 9.
- VGW 1 generation dam. MPPA 101.

EPDs	
ProS	89
HB	62
GM	27
CED	19
BW	-5.1
WW	72
YW	114
MK	28
ME	11
HPG	13
CEM	11
ST	16
MARB	0.69/32
YG	0.29/27
REA	-0.38/33

WESTPHAL  
27

**VGW CUTTING EDGE 363**

BULL

Reg: 4767129 • VGW 363 • Clvd: 02-19-2023 • 100% 1A

LJC ICEMAN 411D

**VGW CUTTING EDGE 807**

3973768

VGW FUS-STAR 1601

LELAND DICTATE 8540

**VGW DIC-DORA 2053**

4272537

VGW 141-DORA 1561

BW	DAMAGE	205 ADJ WT	PRJ SALE WT
83	3	662	1355

- A moderate sized bull, 363 is a Cutting Edge son with long sides, and a quiet demeanor. His sire has top 2% CED, 10% BW and CEM 1%, and 807 also has top EPD %'s of 7 WW, 6 YW and 8 ADG. His MGD, 1561, sold two sons to purebred breeders. Top 5% EPD's: Sire - CED 2, CEM 1.

- 363 Top EPD %'s: MK 20, HPG 20, ST 15.
- VGW 9 generation dam. MPPA 99.

EPDs	
ProS	71
HB	68
GM	3
CED	12
BW	-2.6
WW	66
YW	107
MK	29
ME	9
HPG	13
CEM	7
ST	18
MARB	0.38/30
YG	0.17/27
REA	-0.46/32

WESTPHAL  
28

**VGW CUTTING EDGE 374 BULL**

Reg: 4767099 • VGW 374 • Clvd: 02-24-2023 • 100% 1A

LJC ICEMAN 411D

**VGW CUTTING EDGE 807**

3973768 VGW FUS-STAR 1601

VGW BUMPER CROP 510

**VGW BC-STAR 2067**

4272421 VGW U199-STAR 1284

BW	DAMAGE	205 ADJ WT	PRJ SALE WT
73	3	638	1255

- This bull is a prospect to use on heifers with top EPD %'s in CED, BW and CEM. He's a Cutting Edge-Bumper Crop cross with a moderate frame and a calving ease look. On each side of his pedigree is Andras Fusion R236, a long, deep full-of-red-meat sire. Top 5% EPD's: Sire - CED 4, CEM 3.
- 374 Top EPD %'s: CED 4, BW 6, WW 19, CEM 3.
- VGW 9 generation dam. MPPA 96.

EPDs	
ProS	78
HB	45
GM	33
CED	18
BW	-4.9
WW	71
YW	112
MK	26
ME	10
HPG	13
CEM	11
ST	13
MARB	0.55/32
YG	0.17/29
REA	-0.11/35



**VGW CUTTING EDGE 807  
SIRE OF LOTS 24-28**

WESTPHAL  
29

**VGW EDITOR 383 BULL**

Reg: 4766887 • VGW 383 • Clvd: 02-28-2023 • 100% 1A

5L GAME ON 703-50C

**VGW EDITOR 702**

3764711 5L SUNBUSRT 233-3355

ANDRAS FUSION R236

**VGW FUS-DORA 1603**

3554147 VGW GY-DORA 1444

BW	DAMAGE	205 ADJ WT	PRJ SALE WT
86	7	715	1275

- Editor 383 has an attractive, straight topline, and tight sheath. He's smaller in stature with a very good disposition. He's got strong EPD's with ProS 15% and HB 12%, with an impressive 9 generation Dora dam with 105 MPPA. Top 5% EPD's: Sire - CED 4, BW 5; Dam - Fat 4.
- 383 Top EPD %'s: ProS 15, HB 12, MK 15, ST 5, YG 10, Fat 2.
- VGW 9 generation dam. MPPA 105.

EPDs	
ProS	117
HB	73
GM	44
CED	14
BW	-1.5
WW	58
YW	91
MK	30
ME	2
HPG	11
CEM	6
ST	19
MARB	0.57/34
YG	-0.03/30
REA	0.07/36

WESTPHAL  
31

**VGW EDITOR 391 BULL**

Reg: 4766881 • VGW 391 • Clvd: 03-02-2023 • 100% 1A

5L GAME ON 703-50C

**VGW EDITOR 702**

3764711 5L SUNBUSRT 233-3355

VGW MEGATRON 141

**VGW MEG-INDIGO 1685**

3554095 VGW U199- INDIGO 1279

BW	DAMAGE	205 ADJ WT	PRJ SALE WT
81	7	640	1250

- 391 is an Editor 702-Megatron 141 prospect with ProS and HB top percentile EPD's. He's from a six generation Indigo dam, a member of another of our top production foundation cow families. Top 5% EPD's: Sire - CED 4, BW 5.
- 391 Top EPD %'s: ProS 17, HB 16, DMI 20, ME 18, ST 10, Fat 12.
- VGW 6 generation dam. MPPA 97.

EPDs	
ProS	115
HB	73
GM	42
CED	13
BW	-2.4
WW	52
YW	86
MK	29
ME	-5
HPG	10
CEM	6
ST	19
MARB	0.43/35
YG	0.12/29
REA	-0.23/35

WESTPHAL  
30

**VGW EDITOR 378 BULL**

Reg: 4766925 • VGW 378 • Clvd: 02-24-2023 • 100% 1A

5L GAME ON 703-50C

**VGW EDITOR 702**

3764711 5L SUNBUSRT 233-3355

3SCC NAVIGATOR A448

**VGW NAV-CHRSS 1773**

3764461 VGW U199-CHRSS 1315

BW	DAMAGE	205 ADJ WT	PRJ SALE WT
75	6	645	1175

- This Editor 702 son can head to the heifer pasture with top EPD %'s: 4 ProS, 4 CED, and 6 BW. With a wide set stance, he has a calving ease look from the front with a smaller head and clean throat and shoulders. Top 5% EPD's: Sire - CED 4, BW 5; Dam - ProS 5.
- 378 Top EPD %'s: ProS 4, HB 10, GM 14, CED 4, BW 6, MK 10, ST 6, Marb 10.
- VGW 11 generation dam. MPPA 98.

EPDs	
ProS	135
HB	76
GM	59
CED	18
BW	-5
WW	50
YW	88
MK	31
ME	-1
HPG	11
CEM	8
ST	19
MARB	0.69/34
YG	0.11/29
REA	-0.21/34

WESTPHAL  
32

**VGW EDITOR 318P BULL**

Reg: 4766955 • VGW 318P • Clvd: 03-24-2023 • 99.9% 1B

5L GAME ON 703-50C

**VGW EDITOR 702**

3764711 5L SUNBUSRT 233-3355

LJC ICEMAN 411D

**VGW IM-RED P1812**

3973494 VGW RIV-RED P1417

BW	DAMAGE	205 ADJ WT	PRJ SALE WT
80	5	762	1495

- This 1B prospect has a 9 generation Red family cow. She sold a top prospect to a longtime breeder last year. 318P is a stand-out many have noted. He's sports a 107 WWR, and his sire had tremendous spread from 75 BW to 769 Adj WW. Editor 702 had 108 WWR and a 107 YWR, along with his Top 5% EPD's: Sire - CED 4, BW 5.
- 318P Top EPD %'s: CED 20, MK 17, ST 17.
- VGW 9 generation dam. MPPA 101.

EPDs	
ProS	90
HB	66
GM	23
CED	15
BW	-2.7
WW	65
YW	101
MK	30
ME	6
HPG	13
CEM	7
ST	18
MARB	0.40/34
YG	0.13/29
REA	-0.10/35



**VGW CLEVELAND 328**

**BULL**

Reg: 4766995 • VGW 328 • Clvd: 02-06-2023 • 100% 1A

RED U2 GENESIS 103G

**RED TER-RON GW CLEVELAND 25J**

4637765 RED TER-RON DIAMOND MIST 98G

LJC ICEMAN 411D

**VGW IM-TABITHA 1817**

3973756 VGW ADV-TABITHA 16102

BW	DAMAGE	205 ADJ WT	PRJ SALE WT
89	5	728	1355

- This dark faced, deep red prospect is from a top long established cow family. His Tabitha dam has two daughters in the herd, and a son sold in our 2023 sale. His sire, Cleveland 25J is deep bodied with a strong top, and started with a very modest 60 BW, and weaned with an Act WW of 785. Top 5% EPD's: Dam - WW 2.
- 328 Top EPD %'s: WW 14, YW 18, MK 12.
- VGW 6 generation dam. MPPA 105.

EPDs	
ProS	60
HB	25
GM	35
CED	11
BW	0.2
WW	72
YW	115
MK	31
ME	4
HPG	12
CEM	6
ST	10
MARB	0.39/30
YG	0.16/27
REA	-0.14/32



**VGW CLEVELAND 315**

**BULL**

Reg: 4767067 • VGW 315 • Clvd: 02-02-2023 • 100% 1A

RED U2 GENESIS 103G

**RED TER-RON GW CLEVELAND 25J**

4637765 RED TER-RON DIAMOND MIST 98G

JACOBSON MOUTAINEER 5076

**VGW MT-DORA 1976**

4142828 VGW MER-DORA 1638

BW	DAMAGE	205 ADJ WT	PRJ SALE WT
77	4	678	1370

- An attractive dark red bull, 315 will have you taking a second glance at. He's longer faced, and packed with beef on a larger frame, clean front, and deep sides. His young Dora dam sold a son in our 2023 Sale, and she has 6 cat's Top 20% EPD's.
- 315 Top EPD %'s: HB 19, BW 19, ST 10.
- VGW 9 generation dam. MPPA 95.

EPDs	
ProS	88
HB	69
GM	19
CED	14
BW	-3.8
WW	59
YW	97
MK	27
ME	3
HPG	10
CEM	7
ST	18
MARB	0.16/30
YG	0.15/27
REA	-0.14/32



**VGW CLEVELAND 338**

**BULL**

Reg: 4767005 • VGW 338 • Clvd: 02-08-2023 • 100% 1A

RED U2 GENESIS 103G

**RED TER-RON GW CLEVELAND 25J**

4637765 RED TER-RON DIAMOND MIST 98G

VGW BUMPER CROP 510

**VGW BC-DORA 1804**

3973850 VGW PAL-DORA 1675

BW	DAMAGE	205 ADJ WT	PRJ SALE WT
92	5	761	1440

- Here's a pound-maker bull with Adj WW 761, and a 107 WWR that has plenty of interest at the yard. Well balanced end to end, 338 has outstanding quarter, and smooth clean throat and top line. His 105 MPPA Dora dam has a daughter in our herd, and two sons sold in recent sales.
- 338 Top EPD %'s: MK 20, CW 3, Fat 5.
- VGW 8 generation dam. MPPA 105.

EPDs	
ProS	88
HB	57
GM	31
CED	10
BW	2.1
WW	67
YW	105
MK	29
ME	3
HPG	10
CEM	6
ST	16
MARB	0.22/29
YG	0.12/26
REA	0.00/32



**JKW 304 MICK**

**BULL**

Reg: 4767371 • JKW 304 • Clvd: 03-13-2023 • 100% 1A

RED U2 GENESIS 103G

**RED TER-RON GW CLEVELAND 25J**

4637765 RED TER-RON DIAMOND MIST 98G

CBR FINAL ANSWER 1174-831

**JKW 2004 MAVIS**

4289251 JKW MC-JUB DOLLY

BW	DAMAGE	205 ADJ WT	PRJ SALE WT
85	3	658	1140

- Mick 304 is a moderate sized, very docile Cleveland 25J son. He stacks solid performance traits in from both his sire and dam. His Dolly cow-family dam adds production and performance with balanced, just right size, sound generational maternal traits and mothering ability. She had a son sell in our '23 sale.
- VGW 9 generation dam. MPPA 99.

EPDs	
ProS	37
HB	49
GM	-11
CED	12
BW	0.4
WW	56
YW	85
MK	28
ME	3
HPG	9
CEM	6
ST	16
MARB	0.10/27
YG	0.14/26
REA	-0.23/32



**LOT 34 - VGW CLEVELAND 338**



**VGW CLEVELAND 339**

**BULL**

Reg: 4767001 • VGW 339 • Clvd: 02-08-2023 • 100% 1A

RED U2 GENESIS 103G

**RED TER-RON GW CLEVELAND 25J**

4637765 RED TER-RON DIAMOND MIST 98G

LJC ICEMAN 411D

**VGW IM-DOLL 1813**

3973822 VGW THU-DOLL 1634

BW	DAMAGE	205 ADJ WT	PRJ SALE WT
85	5	735	1330

- Study him from every angle to see his style and balance. We AI'd a number of cows to the Cleveland sire and sure like his calves. Sons have ample body mass, and standing behind them you'll appreciate their large, deep quarters. 339 has 735 Adj WW, from his 108 MPPA, Doll family dam. Top 5% EPD's: Dam - WW 1, YW 1, CW 4.
- 339 Top EPD %'s: WW 5, YW 9, MK 9, CW 18.
- VGW 7 generation dam. MPPA 108.

EPDs	
ProS	67
HB	59
GM	8
CED	14
BW	-0.1
WW	78
YW	122
MK	31
ME	5
HPG	10
CEM	8
ST	15
MARB	0.05/30
YG	0.08/27
REA	0.12/31



**VGW CLEVELAND 359**

**BULL**

Reg: 4767011 • VGW 359 • Clvd: 02-14-2023 • 100% 1A

RED U2 GENESIS 103G

**RED TER-RON GW CLEVELAND 25J**

4637765 RED TER-RON DIAMOND MIST 98G

LJC ICEMAN 411D

**VGW IM-SALEE 1889**

3973906 5L MARTHA 1952-5065

BW	DAMAGE	205 ADJ WT	PRJ SALE WT
92	5	699	1330

- 359 is a stout individual with a square stance and performance numbers, including a 12 GM %. He'll go right to work, and his calves will have the extra pounds everyone wants at weaning. Use him on cows for pounds plus in your program. There are top production and carcass values in this all-around stylish prospect.
- Top 5% EPD's: Dam- WW 2, YW 3.
- 359 Top EPD %'s: GM 12, WW 4, YW 3, ADG 3, CW 1, Fat 12.
- VGW 1 generation dam. MPPA 102.

EPDs	
ProS	85
HB	25
GM	60
CED	10
BW	4.4
WW	78
YW	130
MK	28
ME	2
HPG	11
CEM	6
ST	10
MARB	0.31/29
YG	0.09/27
REA	0.23/32



**VGW CLEVELAND 353**

**BULL**

Reg: 4766957 • VGW 353 • Clvd: 02-11-2023 • 100% 1A

RED U2 GENESIS 103G

**RED TER-RON GW CLEVELAND 25J**

4637765 RED TER-RON DIAMOND MIST 98G

JACOBSON MOUTAINEER 5076

**VGW MT-DORA 18104**

3973532 VGW GY-DORA 1444

BW	DAMAGE	205 ADJ WT	PRJ SALE WT
86	5	640	1315

- 353 has top EPD %'s in six diverse categories. He's extra-clean and this Cleveland son is put together just right. There's substance and carcass quality here. We retained both daughters out of his Dora 18104 dam. She sold a son in our '23 Sale. Top 5% EPD's: Dam - WW 1, YW 1, ADG 2.
- 353 Top EPD %'s: HB 15, WW 8, YW 7, ADG 8, ST 9, CW 18.
- VGW 9 generation dam. MPPA 99.

EPDs	
ProS	92
HB	70
GM	22
CED	12
BW	0.9
WW	76
YW	124
MK	27
ME	5
HPG	10
CEM	6
ST	18
MARB	0.12/29
YG	0.09/26
REA	0.02/31



**VGW CLEVELAND 356**

**BULL**

Reg: 4766805 • VGW 356 • Clvd: 02-13-2023 • 100% 1A

RED U2 GENESIS 103G

**RED TER-RON GW CLEVELAND 25J**

4637765 RED TER-RON DIAMOND MIST 98G

5L DOUBLE DESIGN 1177-227W

**VGW DD-STAR 1303**

1630377 VGW 396V-STAR 1082

BW	DAMAGE	205 ADJ WT	PRJ SALE WT
76	10	677	1240

- Cleveland calves are born easy and have an easy fleshing style. 356 has Act 77 BW, with strong HB, MK and ST. His Star cow goes back 10 generations to 1980. These females work in our range conditions. Use his daughters to increase cowherd production value. The dam is ten, MPPA 106, and is a terrific producer each year.
- 356 Top EPD %'s: HB 8, MK 17, ST 10.
- VGW 10 generation dam. MPPA 106.

EPDs	
ProS	59
HB	78
GM	-19
CED	14
BW	-1.9
WW	65
YW	92
MK	30
ME	3
HPG	11
CEM	8
ST	19
MARB	0.09/31
YG	0.25/28
REA	-0.40/34



**VGW CLEVELAND 331**

**BULL**

Reg: 4766971 • VGW 331 • Clvd: 02-06-2023 • 100% 1A

RED U2 GENESIS 103G

**RED TER-RON GW CLEVELAND 25J**

4637765 RED TER-RON DIAMOND MIST 98G

VGW MERCY- MERCY 412

**VGW MM-CHRSS 1897**

3973630 VGW JOUR-CHRSS 13123

BW	DAMAGE	205 ADJ WT	PRJ SALE WT
81	5	610	1265

- 331 is more interesting every time we see him. He's developed substantially with a wide top, square stance, compelling pattern, and beefiness. Coming into his own since weaning, he's a stand out. Built like a block he's top 1%'s in ProS, HB, and ST EPD's. Top 5% EPD's: Dam - ProS 4, HB 3, ST 4.
- 331 Top EPD %'s: ProS 1, HB 1, CED 9, MK 10, CEM 3, ST 1.
- VGW 8 generation dam. MPPA 100.

EPDs	
ProS	149
HB	123
GM	26
CED	17
BW	-3
WW	56
YW	85
MK	31
ME	2
HPG	11
CEM	11
ST	25
MARB	0.44/30
YG	0.19/27
REA	0.01/32



**VGW CLEVELAND 349**

**BULL**

Reg: 4766989 • VGW 349 • Clvd: 02-10-2023 • 100% 1A

RED U2 GENESIS 103G

**RED TER-RON GW CLEVELAND 25J**

4637765 RED TER-RON DIAMOND MIST 98G

VGW MERCY- MERCY 412

**VGW MM-INDIGO 1893**

3973714 VGW JOUR-INDIGO 13126

BW	DAMAGE	205 ADJ WT	PRJ SALE WT
80	5	634	1310

- This long sided, top % ProS and HB bull is out of a young Mercy-Mercy daughter that sold a stout son in 2023. The Indigo cows are balanced dams with great production value. 349 checks off your fault free phenotype and performance needs, as well as strong scrotal. Top 5% EPD's: Dam- HB 1, ST 5.
- 349 Top EPD %'s: ProS 20, HB 1, MK 15, ST 1.
- VGW 6 generation dam. MPPA 97.

EPDs	
ProS	110
HB	102
GM	8
CED	14
BW	-1.3
WW	56
YW	84
MK	30
ME	-3
HPG	11
CEM	8
ST	22
MARB	0.29/28
YG	0.16/26
REA	-0.21/31



**LOT 42 - VGW CLEVELAND 331**





**VGW CLEVELAND 352**

**BULL**

Reg: 4766903 • VGW 352 • Clvd: 02-11-2023 • 100% 1A

RED U2 GENESIS 103G

**RED TER-RON GW CLEVELAND 25J**

4637765 RED TER-RON DIAMOND MIST 98G

JACOBSON MOUTAINEER 5076

**VGW MT-DORA 1756**

3764221 VGW PAT-DORA 0603

BW	DAMAGE	205 ADJ WT	PRJ SALE WT
87	6	633	1355

- Those studying Cleveland 25J all remark on his super deep body and strong top, with great presence, and sons that carry on his stature. 352 has a long head, deep dense meat-filled middle, and solid legs and feet. He's very docile when you move around him, with a strong muscled quarter. Top 5% EPD's: Dam - WW 2, YW 2, Fat 4.
- 352 Top EPD %'s: WW 19.
- VGW 8 generation dam. MPPA 99.

EPDs	
ProS	73
HB	53
GM	20
CED	9
BW	1.9
WW	70
YW	110
MK	26
ME	4
HPG	10
CEM	5
ST	17
MARB	0.23/30
YG	0.09/27
REA	-0.05/33



**VGW CLEVELAND 303P**

**BULL**

Reg: 4767039 • VGW 303P • Clvd: 02-02-2023 • 99.8% 1B

RED U2 GENESIS 103G

**RED TER-RON GW CLEVELAND 25J**

4637765 RED TER-RON DIAMOND MIST 98G

3SCC DOMAIN A163

**VGW DO-RED P1905**

4142572 VGW MERCY-RED P1720

BW	DAMAGE	205 ADJ WT	PRJ SALE WT
67	4	683	1280

- 303P a 1B is a stout, well balanced bull sporting strong lower quarter and lengthy sides. There's maternal and calving ease bred in, starting with his 67 BW. Solid breeding, generations deep with a powerful sire yields this commanding prospect. His Do-Red dam has top 20% EPD's in 7 maternal and carcass categories.
- 303P Top EPD %'s: CED 15, MK 12.
- VGW 7 generation dam. MPPA 99.

EPDs	
ProS	89
HB	62
GM	26
CED	15
BW	-2.5
WW	59
YW	88
MK	31
ME	1
HPG	10
CEM	8
ST	17
MARB	0.37/31
YG	0.17/27
REA	0.05/33



**VGW CLEVELAND 307P**

**BULL**

Reg: 4767215 • VGW 307P • Clvd: 02-06-2023 • 99.9% 1B

RED U2 GENESIS 103G

**RED TER-RON GW CLEVELAND 25J**

4637765 RED TER-RON DIAMOND MIST 98G

BIEBER CLATOMIC C218

**VGW AT-RED P2103**

4428509 VGW ADV-RED P1619

BW	DAMAGE	205 ADJ WT	PRJ SALE WT
79	2	733	1365

- His first calf heifer dam did a great job, bringing him along to a sturdy 733 Adj WW. 307P is extra broad backed with a wide, wide stance. We talk about maternal strength, and his 11 generation dam has tremendous cow power. She is top 20% in seven wide ranging EPD categories.
- 307P Top EPD %'s: WW 12, MK 9.
- VGW 11 generation first calf heifer dam. MPPA 101.

EPDs	
ProS	79
HB	51
GM	28
CED	12
BW	-0.9
WW	73
YW	113
MK	31
ME	3
HPG	10
CEM	8
ST	14
MARB	0.36/31
YG	0.12/27
REA	-0.01/31



**VGW CLEVELAND 305**

**BULL**

Reg: 4767211 • VGW 305 • Clvd: 01-29-2023 • 100% 1A

RED U2 GENESIS 103G

**RED TER-RON GW CLEVELAND 25J**

4637765 RED TER-RON DIAMOND MIST 98G

VGW SHOWDOWN 806

**VGW SD-HAZY 2165**

4428489 VGW MEG-HAZY 1691

BW	DAMAGE	205 ADJ WT	PRJ SALE WT
68	2	672	1285

- A member of our Cleveland progeny group, 305 is easy to look at; he stands square and is extra eye appealing. His Hazy first calf heifer has Showdown, Bumper Crop and Megatron in her pedigree with 9 Top 20% EPD's, including ProS 15. 305 has a very modest 68 BW.
- 305 Top EPD %'s: ProS 11, HB 4, MK 11, ST 6.
- VGW 8 generation first calf heifer dam. MPPA 98.

EPDs	
ProS	120
HB	83
GM	36
CED	14
BW	-1
WW	63
YW	103
MK	31
ME	0
HPG	12
CEM	8
ST	19
MARB	0.27/29
YG	0.06/26
REA	0.20/31



**VGW CLEVELAND 308P**

**BULL**

Reg: 4767003 • VGW 308P • Clvd: 02-10-2023 • 99.9% 1B

RED U2 GENESIS 103G

**RED TER-RON GW CLEVELAND 25J**

4637765 RED TER-RON DIAMOND MIST 98G

VGW CINCH 503

**VGW CIN-RED P1801**

3973842 VGW ADV-RED P1619

BW	DAMAGE	205 ADJ WT	PRJ SALE WT
85	5	725	1340

- When you're adding pounds to calves, extra length in the sire goes a long ways. 308P has added length and stretch down his sides with pronounced lower quarter, and eye appeal. The 11 generation dam, Red P1801, has Top 20% EPD numbers in six divergent categories.
- 308P Top EPD %'s: WW 6, YW 7, ADG 13
- VGW 11 generation dam. MPPA 97.

EPDs	
ProS	91
HB	66
GM	25
CED	14
BW	-0.7
WW	77
YW	124
MK	29
ME	2
HPG	11
CEM	8
ST	16
MARB	0.31/30
YG	0.12/27
REA	0.01/32



**VGW CLEVELAND 310P**

**BULL**

Reg: 4766809 • VGW 310P • Clvd: 02-22-2023 • 99.8% 1B

RED U2 GENESIS 103G

**RED TER-RON GW CLEVELAND 25J**

4637765 RED TER-RON DIAMOND MIST 98G

VGW BASES LOADED 905

**VGW 905-RED P1325**

1630402 VGW 262-RED P0532

BW	DAMAGE	205 ADJ WT	PRJ SALE WT
83	10	676	1230

- Talk about volume and exceptional capacity – 310P showcases ample middle, moderate frame, an easy-doing look, and is complimented by a correct phenotype. You'll be thrilled watching his calves push down the scales in the fall. His Bases Loaded dam has 3 daughters retained in herd.
- 310P Top EPD %'s: HB 5, ST 1.
- VGW 7 generation dam. MPPA 98.

EPDs	
ProS	100
HB	83
GM	17
CED	9
BW	0.4
WW	59
YW	90
MK	28
ME	2
HPG	10
CEM	5
ST	22
MARB	0.26/31
YG	0.07/27
REA	0.00/32



**VGW CLEVELAND 314P BULL**

Reg: 4766811 • VGW 314P • Clvd: 03-01-2023 • 99.9% 1B

RED U2 GENESIS 103G

**RED TER-RON GW CLEVELAND 25J**  
4637765 RED TER-RON DIAMOND MIST 98G

5L SMOKE SIGNAL 756-176V

**VGW SS-RED P1311**  
1630405 VGW 386-RED P0612

BW	DAM AGE	205 ADJ WT	PRJ SALE WT
90	10	662	1335

- This Cleveland son has a long clean head and front end, with a calving ease look. To stay in the herd, VGW cows pass rigorous production standards annually. 314P has a 10-year-old dam that consistently raises a powerhouse calf with 4 sons selling in past sales, 2 daughters retained in-herd, and 2 sold in past sales.
- 314P Top EPD %'s: CW 4.
- VGW 7 generation dam. MPPA 97.

EPDs	
ProS	93
HB	56
GM	37
CED	13
BW	1.8
WW	68
YW	110
MK	26
ME	-2
HPG	11
CEM	7
ST	14
MARB	0.18/31
YG	0.12/27
REA	0.16/32



**VGW FARMLAND 302 BULL**

Reg: 4767289 • VGW 302 • Clvd: 01-27-2023 • 100% 1A

HXC PATRIOT 7796E

**RHRA FROSTY 5G**  
4156644 RHRA MARTHA 302A 602D

VGW CUTTING EDGE 807

**VGW CE-STAR 2110**  
4428825 VGW BF-STAR 1997

BW	DAM AGE	205 ADJ WT	PRJ SALE WT
70	2	802	1480

- End to end, Farmland 302 is a "take a look at" Frosty prospect. He has top CED, WW and YW %'s. From a first calf heifer comes this 802 Adj WW bull that packs a performance punch. Tops in 10 EPD's he's deep and full of capacity. Top percentile EPD's: Sire - 12 cat; Dam 8 cat.
- 302 Top EPD %'s: GM 14, CED 19, BW 9, WW 3, YW 2, ADG 3, MK 7, CEM 19, Marb 5, FAT 6.
- VGW 12 generation, first calf heifer dam. MPPA 105.

EPDs	
ProS	100
HB	42
GM	58
CED	15
BW	-4.7
WW	80
YW	133
MK	32
ME	12
HPG	13
CEM	9
ST	13
MARB	0.78/30
YG	0.01/27
REA	0.08/32



**VGW CLEVELAND 305P BULL**

Reg: 4766831 • VGW 305P • Clvd: 02-05-2023 • 99.7% 1B

RED U2 GENESIS 103G

**RED TER-RON GW CLEVELAND 25J**  
4637765 RED TER-RON DIAMOND MIST 98G

BUF CRK THE RIGHT KIND U199

**VGW U199-RED P1413**  
1696365 VGW 262-RED P0514

BW	DAM AGE	205 ADJ WT	PRJ SALE WT
81	9	698	1300

- A top 1% HB EPD, study this Cleveland son with the breeding to sire daughters that will stay in the herd for years. His dam, Red P1413, is sired by the legendary The Right Kind U199 bull. You'll want to find him on sale day and add him to your list of heifer bull prospects. Top 5% EPD's: Dam - Fat 5.
- 305P Top EPD %'s: HB 1, MK 12, ST 1.
- VGW 7 generation dam. MPPA 104.

EPDs	
ProS	74
HB	96
GM	-22
CED	12
BW	-3.3
WW	64
YW	98
MK	31
ME	3
HPG	10
CEM	8
ST	22
MARB	-0.03/30
YG	0.15/28
REA	-0.27/33



**VGW FROSTY 330 BULL**

Reg: 4766929 • VGW 330 • Clvd: 02-06-2023 • 100% 1A

HXC PATRIOT 7796E

**RHRA FROSTY 5G**  
4156644 RHRA MARTHA 302A 602D

RED U-2 FOREIGNER 413B

**VGW FOR-YOGO 1740**  
3764529 VGW 396V-YOGO 1330

BW	DAM AGE	205 ADJ WT	PRJ SALE WT
86	6	706	1415

- Frosty 5G is known for his top percentile EPD's, along with performance and style. With 12 categories top 20% EPD's, you'll notice his sons have depth of body, consistent muscle shape and calving ease. 330 is a beefy prospect with great quarter, effortless phenotype, and expansive shape.
- 330 Top EPD %'s: WW 2, YW 6, ADG 20, HPG 15, YG 18, CW 8, REA 8.
- VGW 9 generation dam. MPPA 101.

EPDs	
ProS	99
HB	62
GM	36
CED	14
BW	-0.3
WW	82
YW	126
MK	27
ME	6
HPG	14
CEM	8
ST	15
MARB	0.44/31
YG	0.00/27
REA	0.39/32



**VGW CLEVELAND 304P BULL**

Reg: 4766977 • VGW 304P • Clvd: 02-02-2023 • 99.9% 1B

RED U2 GENESIS 103G

**RED TER-RON GW CLEVELAND 25J**  
4637765 RED TER-RON DIAMOND MIST 98G

LJC ICEMAN 411D

**VGW IM-RED P1810**  
3973662 VGW 554T-RED P1002

BW	DAM AGE	205 ADJ WT	PRJ SALE WT
74	5	610	1140

- 304P combines a deep square hind quarter with nice disposition. A moderate sized Cleveland son, he's full of volume. Use his 9th generation VGW Red dam to move your program forward with long standing maternal quality and performance. His sire is top 14% in ME. Top 5% EPD's: Dam - WW 5, YW 5.
- 304P Top EPD %'s: CEM 19.
- VGW 8 generation dam. MPPA 100.

EPDs	
ProS	49
HB	48
GM	1
CED	15
BW	-2
WW	57
YW	88
MK	28
ME	2
HPG	11
CEM	9
ST	14
MARB	0.23/30
YG	0.18/27
REA	-0.24/33



**VGW FROSTY 316 BULL**

Reg: 4766799 • VGW 316 • Clvd: 02-03-2023 • 100% 1A

HXC PATRIOT 7796E

**RHRA FROSTY 5G**  
4156644 RHRA MARTHA 302A 602D

BUF CRK THE RIGHT KIND U199

**VGW U199-INDIGO 1279**  
1597868 VGW PAT-INDIGO 0923

BW	DAM AGE	205 ADJ WT	PRJ SALE WT
76	11	680	1345

- 316 is one to study and consider for use in the heifer pasture. He is easy to look at, with a deep long quarter and smooth underline. Note his breed top percentile carcass EPD's, and his sire has 12 categories of top EPD's. Top 5% EPD's: Dam - Fat 2.
- 316 Top EPD %'s: MK 12, YG 11, CW 15, REA 15, Fat 5.
- VGW 5 generation dam. MPPA 96.

EPDs	
ProS	99
HB	50
GM	49
CED	12
BW	-3.5
WW	62
YW	94
MK	31
ME	4
HPG	10
CEM	7
ST	15
MARB	0.41/33
YG	-0.03/29
REA	0.33/35

WESTPHAL  
55

**VGW FRONTLINE 306**

BULL

Reg: 4767213 • VGW 306 • Clvd: 01-30-2023 • 100% 1A

HXC PATRIOT 7796E

RHRA FROSTY 5G

4156644

RHRA MARTHA 302A 602D

VGW SHOWDOWN 806

VGW SD-DORA 2161

4428495

VGW FUS-DORA 1603

BW	DAMAGE	205 ADJ WT	PRJ SALE WT
84	2	773	1450

- A first calf heifer raised this big time performance prospect. Evaluate his outstanding breed type, extra capacity, red meat and performance, marbling, and ribeye. He's bred to add extra pounds on calves. His sire has 11 cat's and dam has 7 cat's top 20% EPD's.
- 306 Top EPD %'s: ProS 10, HB 11, WW 1, YW 4, ADG 19, MK 7, ST 17, Marb 14.
- VGW 10 generation first calf heifer dam. MPPA 103.

EPDs	
ProS	118
HB	74
GM	45
CED	14
BW	-1.6
WW	84
YW	128
MK	32
ME	10
HPG	13
CEM	8
ST	17
MARB	0.63/31
YG	0.04/28
REA	0.26/33

WESTPHAL  
57

**VGW FROSTY 332**

BULL

Reg: 4767023 • VGW 332 • Clvd: 02-06-2023 • 100% 1A

HXC PATRIOT 7796E

RHRA FROSTY 5G

4156644

RHRA MARTHA 302A 602D

JACOBSON MOUTAINEER 5076

VGW MT-STAR 19101

4142438

VGW R667-STAR 0815

BW	DAMAGE	205 ADJ WT	PRJ SALE WT
84	4	686	1240

- Frosty 332 is a moderate framed, thick prospect with ample rib, and the performance, style, pattern, and beefiness his sire is known for. His 7 generation Star family cow has daughters retained, and one daughter sold to a purebred breeder in 2023. The Frosty sire is top 20% in twelve EPD categories.
- 332 Top EPD %'s: WW 20, YW 19, ADG 20.
- VGW 7 generation dam. MPPA 102.

EPDs	
ProS	87
HB	46
GM	41
CED	12
BW	-1.1
WW	69
YW	112
MK	28
ME	12
HPG	12
CEM	6
ST	16
MARB	0.56/31
YG	0.09/27
REA	0.12/32

WESTPHAL  
56

**VGW FROSTY 351**

BULL

Reg: 4766813 • VGW 351 • Clvd: 02-11-2023 • 100% 1A

HXC PATRIOT 7796E

RHRA FROSTY 5G

4156644

RHRA MARTHA 302A 602D

MESSMER COLUMBIA W054

VGW W054-HAZY 1390

1630446

VGW 508-HAZY 0832

BW	DAMAGE	205 ADJ WT	PRJ SALE WT
76	10	623	1335

- The Frosty sons are deep bodied, with expressive muscle shape. 351 is thick and has top carcass percentiles in every category. He's a robust, smaller statured prospect everyone will appreciate. The sire has 13 top 25% EPD's and the dam has Top 5% EPD: HPG 3.
- 351 Top EPD %'s: ProS 10, GM 4, BW 9, MK 12, HPG 11, Marb 11, YG 5, REA 9, Fat 5.
- VGW 7 generation dam. MPPA 94.

EPDs	
ProS	121
HB	50
GM	71
CED	14
BW	-4.6
WW	62
YW	103
MK	31
ME	9
HPG	14
CEM	8
ST	14
MARB	0.68/34
YG	-0.07/29
REA	0.38/35

WESTPHAL  
58

**VGW COMFORT 310**

BULL

Reg: 4767187 • VGW 310 • Clvd: 01-31-2023 • 100% 1A

SPUR FRANCHISE OF GARTON

HXC CHARTER 6610D

3547655

HXC 111Y

VGW BUMPER CROP 510

VGW BC-CHRSS 2174

4428363

VGW U199-CHRSS 1274

BW	DAMAGE	205 ADJ WT	PRJ SALE WT
77	2	729	1355

- This dark red, deep middled Charter son has an extra wide base. He and 6610D have top 1% Marb EPD's, and 310 displays muscle shape, thickness, and overall exceptional width. Bred to perform, his first calf heifer dam weaned him at 729 Adj WW. Top 20% EPD's: Sire - 8 and Dam - 5 categories.
- 310 Top EPD %'s: ProS 11, GM 7, WW 6, YW 6, ADG 8, MK 16, Marb 1, Fat 12.
- VGW 11 generation first calf heifer dam. MPPA 101.

EPDs	
ProS	126
HB	55
GM	71
CED	12
BW	-1.1
WW	77
YW	125
MK	30
ME	7
HPG	11
CEM	7
ST	16
MARB	0.96/35
YG	0.16/29
REA	-0.22/34



**LOT 56 - VGW FROSTY 351**

WESTPHAL  
59

**VGW CONTRACTOR 301**

BULL

Reg: 4767271 • VGW 301 • Clvd: 01-22-2023 • 100% 1A

SPUR FRANCHISE OF GARTON

HXC CHARTER 6610D

3547655

HXC 111Y

VGW CUTTING EDGE 807

VGW CE-ANK 2150

4428729

VGW BF-ANK 1969

BW	DAMAGE	205 ADJ WT	PRJ SALE WT
76	2	769	1435

- Spend time sale morning noting this long-sided heifer bull prospect who has 8 cat. top 12% or better EPD's. Square and moderate, he's deep quartered with level topline. His steers will have the added pounds you want at weaning.
- Top 5% EPD's: Sire- ProS & GM 1, Marb & CW 2.
- 301 Top EPD %'s: ProS 12, GM 7, WW 1, YW 1, ADG 3, MK 10, Marb 4, CW 4.
- VGW 8 generation, first calf heifer dam. MPPA 103.

EPDs	
ProS	125
HB	54
GM	71
CED	13
BW	-1.5
WW	86
YW	140
MK	32
ME	11
HPG	13
CEM	8
ST	14
MARB	0.81/34
YG	0.20/30
REA	0.04/35



**VGW CRUSH 307**

**BULL**

Reg: 4767219 • VGW 307 • Clvd: 01-30-2023 • 100% 1A

SPUR FRANCHISE OF GARTON

**HXC CHARTER 6610D**

3547655 HXC 111Y

KCC EAGER 525-715

**VGW EAG-SARA 2149**

4428533 VGW FOR-SARA 1734

BW	DAM AGE	205 ADJ WT	PRJ SALE WT
81	2	731	1420

- 307 is a well-defined, smooth fronted bull with a natural large girth and sure shot performance. With an attractive phenotype, he's a standout in the pen, and he's bred to add efficient carcass quality. Top 5% EPD's: Sire - ProS 1, GM 1, Marb 2, CW 3.
- 307 Top EPD %'s: ProS 6, GM 2, WW 1, YW 1, ADG 2, MK 20, Marb 5, CW 1, REA 8
- VGW 4 generation first calf heifer dam. MPPA 101.

EPDs	
ProS	133
HB	48
GM	85
CED	11
BW	1.9
WW	88
YW	144
MK	29
ME	5
HPG	12
CEM	7
ST	13
MARB	0.79/35
YG	0.11/30
REA	0.41/35



**VGW ACHIEVING 322**

**BULL**

Reg: 4767035 • VGW 322 • Clvd: 02-05-2023 • 100% 1A

STRA GENERAL 882

**STRA ADMIRAL 0150**

4331071 STRA BANDITO 8132

3SCC DOMAIN A163

**VGW DO-FLOWER 1907**

4142546 VGW CI-FLOWER 1704

BW	DAM AGE	205 ADJ WT	PRJ SALE WT
86	4	813	1500

- "The rubber hits the road" with this 882 son. A smooth, attractive prospect with an 813 Adj WW. Deep, high-volume middle and rear quarter, Achieving 322 is red meat plus, bred to add pounds and extension, and has strong maternal and performance traits. Top 5% EPD's: Sire - WW 1, YW 3; Dam - WW 1, YW 1, ADG 3.
- 322 Top EPD %'s: WW 1, YW 1, ADG 1, HPG 19, YG 15, CW 1, REA 6, FAT 3.
- VGW 10 generation dam. MPPA 108.

EPDs	
ProS	92
HB	50
GM	42
CED	10
BW	2
WW	107
YW	166
MK	27
ME	14
HPG	13
CEM	6
ST	14
MARB	0.45/34
YG	-0.01/29
REA	0.44/35



**VGW CHARTER 342**

**BULL**

Reg: 4766791 • VGW 342 • Clvd: 02-08-2023 • 100% 1A

SPUR FRANCHISE OF GARTON

**HXC CHARTER 6610D**

3547655 HXC 111Y

5L RED TRADER 1416-396V

**VGW 396V-CAMILLE 1093**

1412560 VGW GS-CAMILLE 0680

BW	DAM AGE	205 ADJ WT	PRJ SALE WT
88	13	721	1360

- His sire has 10 top 15% values, including 1% ProS and GM, and his powerhouse calf crop is consistent and outstanding. Purchase half-brothers to add reliability to your calf crop and notice this high caliber bull with a 13-year-old 103 MPPA dam. Top 5% EPD's: Sire - ProS 1, GM 1, ST 4, Marb 2, CW 3; Dam - MK 1.
- 342 Top EPD %'s: MK 1, FAT 20.
- VGW 6 generation dam. MPPA 103.

EPDs	
ProS	97
HB	51
GM	46
CED	12
BW	-1.5
WW	61
YW	96
MK	35
ME	8
HPG	10
CEM	7
ST	16
MARB	0.53/36
YG	0.05/30
REA	0.18/36



**LOT 63 - VGW ACHIEVING 322**



**VGW CHARTER 336**

**BULL**

Reg: 4766911 • VGW 336 • Clvd: 02-07-2023 • 100% 1A

SPUR FRANCHISE OF GARTON

**HXC CHARTER 6610D**

3547655 HXC 111Y

RED U-2 FOREIGNER 413B

**VGW FOR-HAZY 1757**

3764329 VGW 396V-HAZY 1094

BW	DAM AGE	205 ADJ WT	PRJ SALE WT
87	6	633	1315

- Unique! Charter 336 puts it all together with impressive GM and carcass numbers. Study this pedigree for leading carcass merit numbers. The paternal granddam is a Beckton Nebula x Boot Jack Make My Day daughter. Top 5% EPD's: Sire - ProS 1, GM 1, Marb 2, CW 2; Dam - YG 3, REA 3.
- 336 Top EPD %'s: Pro S 18, GM 2, WW 18, YW 17, ADG 19, Marb 7, YG 16, CW 3, REA 9, FAT 5.
- VGW 6 generation dam. MPPA 97.

EPDs	
ProS	116
HB	35
GM	81
CED	10
BW	-0.4
WW	69
YW	113
MK	27
ME	1
HPG	13
CEM	2
ST	14
MARB	0.74/36
YG	0.00/30
REA	0.40/36



**VGW ARSENAL 348**

**BULL**

Reg: 4767025 • VGW 348 • Clvd: 02-09-2023 • 100% 1A

STRA GENERAL 882

**STRA ADMIRAL 0150**

4331071 STRA BANDITO 8132

VGW INTENSITY 714

**VGW IN-SARA 1943**

4142460 VGW 396V-SARA 1084

BW	DAM AGE	205 ADJ WT	PRJ SALE WT
84	4	822	1410

- 348 had the third high 822 Adj WW, 115WWR. He stands square with excellent stance and a great walk out. With an extra wide topline, if you want added pounds, utilize the performance and extra capacity bred into this Admiral son. Top 5% EPD's: Sire - WW 1, YW 3.
- 348 Top EPD %'s: HB 16, WW 1, YW 1, ADG 4, HPG 7, REA 20.
- VGW 4 generation dam. MPPA 99.

EPDs	
ProS	78
HB	72
GM	6
CED	8
BW	0.5
WW	98
YW	150
MK	26
ME	14
HPG	15
CEM	6
ST	17
MARB	0.32/33
YG	0.00/28
REA	0.32/34

WESTPHAL  
65

**VGW AGENT 340**

**BULL**

Reg: 4767021 • VGW 340 • Clvd: 02-08-2023 • 100% 1A

STRA GENERAL 882

STRA ADMIRAL 0150

4331071

STRA BANDITO 8132

RREDS PIONEER 6904

VGW PIO-FIREFLY 1933

4142420

5L FIREFLY 3890-2053

BW	DAMAGE	205 ADJ WT	PRJ SALE WT
77	4	760	1395

• This Admiral 0150 son has top 20% EPD's in 7 diverse categories, including HB 11. He's easy natured, masculine and the main comment made about him is, "he's a brick". Square and thick, he has 760 Adj WW, 107 WWR. Top 5% EPD's: Sire - WW 1, YW 3.

• 340 Top EPD %'s: HB 11, WW 4, YW 16, HPG 10, CEM 16, YG 9, REA 7.

• VGW 1 generation dam. MPPA 101.

EPDs	
ProS	87
HB	75
GM	12
CED	13
BW	-2.3
WW	78
YW	114
MK	27
ME	8
HPG	14
CEM	9
ST	16
MARB	0.36/34
YG	-0.04/29
REA	0.43/34



**LOT 65 - VGW AGENT 340**

WESTPHAL  
66

**VGW AUTOMATIC 360**

**BULL**

Reg: 4767071 • VGW 360 • Clvd: 02-14-2023 • 100% 1A

STRA GENERAL 882

STRA ADMIRAL 0150

4331071

STRA BANDITO 8132

RED U-2 RECKONING 294C

VGW RE-YOGO 1955

4142836

VGW MER-YOGO 1655

BW	DAMAGE	205 ADJ WT	PRJ SALE WT
84	4	768	1365

• Here's a home run prospect. Check him out front to back, and topline to bottom. He's square set with a tremendous lower quarter. He combines a 768 Adj WW, 108 WWR, and top ProS and HB EPD %'s. His young Yogo family dam is top 15% ProS and 12% HB. Top 5% EPD's: Sire - WW 1, YW 3.

• 360 Top EPD %'s: ProS 11, HB 1, WW 2, YW 5, ADG 19, HPG 14, ST 1.

• VGW 10 generation dam. MPPA 103.

EPDs	
ProS	114
HB	101
GM	12
CED	9
BW	-0.5
WW	82
YW	125
MK	28
ME	9
HPG	14
CEM	7
ST	22
MARB	0.36/32
YG	0.06/28
REA	0.14/33



**LOT 66 - VGW AUTOMATIC 360**

WESTPHAL  
67

**JKW 301 MAGNUS**

**BULL**

Reg: 4767367 • JKW 301 • Clvd: 02-10-2023 • 100% 1A

STRA GENERAL 882

STRA ADMIRAL 0150

4331071

STRA BANDITO 8132

RED U-2 RECKONING 294C

JKW 1804 BRIDGET

3978348

JKW HS-DORA 1502

BW	DAMAGE	205 ADJ WT	PRJ SALE WT
85	5	691	1235

• JKW 301 is a stylish, long-backed Admiral son. With great thickness, he carries loads of volume and balance. Take a look at his impressive WW and YW EPD's. A deep, deep middled moderate sized bull, he's put together like we like them. Top 5% EPD's: Sire - WW 1 & YW 3.

• JKW 301 Top EPD %'s: HB 14, WW 3, YW 7, ST and CW 13.

• VGW 10 generation dam. MPPA 105.

EPDs	
ProS	94
HB	71
GM	23
CED	11
BW	0.7
WW	81
YW	124
MK	28
ME	11
HPG	12
CEM	8
ST	18
MARB	0.34/33
YG	0.06/29
REA	0.21/33



**LOT 67 - JKW 301 MAGNUS**



**VGW ADMIRAL 347**

**BULL**

Reg: 4766965 • VGW 347 • Clvd: 02-09-2023 • 100% 1A

STRA ADMIRAL 0150

4331071 STRA BANDITO 8132

5L BOURNE FIRE 5353-52C

VGW BF-STAR 1837

3973574 VGW GY-STAR 1416

BW	DAM AGE	205 ADJ WT	PRJ SALE WT
93	5	743	1470

• The Admiral sons really perform and 347 has a 743 Adj WW. There's top HerdBuilder quality, with muscle and body in this prospect. Carcass merit is already established with this sire group, and his Star dam is a 10th generation mother in our herd. Top 5% EPD's: Sire - WW 1, YW 3; Dam - HPG 4.

• 347 Top EPD %'s: HB 11, WW 1, YW 1, ADG 5, HPG 4, ST 20, CW 6, Fat 5.  
• VGW 10 generation dam. MPPA 100.

EPDs	
ProS	96
HB	75
GM	22
CED	9
BW	2.4
WW	90
YW	140
MK	24
ME	8
HPG	16
CEM	5
ST	17
MARB	0.24/32
YG	0.01/28
REA	0.24/32



**VGW ADMIRAL 335**

**BULL**

Reg: 4766987 • VGW 335 • Clvd: 02-07-2023 • 100% 1A

STRA ADMIRAL 0150

4331071 STRA BANDITO 8132

VGW MERCY- MERCY 412

VGW MM-DORY 1875

3973694 VGW PAL-DORY 1456

BW	DAM AGE	205 ADJ WT	PRJ SALE WT
75	5	684	1330

• Heifer bull alert! 335 has above breed average 14 CED and HB 6. Look at the -3.7 BW spread to a top 11% WW EPD. The sire is known for excellent feet and has been used on heifers each year. His Mercy-Mercy x Dory dam has sold sons the past two years. Top 5% EPD's: Sire - WW 1, YW 3.

• 335 Top EPD %'s: HB 5, BW 19, WW 9, HPG 16, CEM 4, ST 19.  
• VGW 10 generation dam. MPPA 98.

EPDs	
ProS	96
HB	83
GM	13
CED	14
BW	-3.7
WW	73
YW	107
MK	26
ME	6
HPG	14
CEM	10
ST	17
MARB	0.44/33
YG	0.13/28
REA	0.07/33



**VGW ADMIRAL 311**

**BULL**

Reg: 4766877 • VGW 311 • Clvd: 02-01-2023 • 100% 1A

STRA ADMIRAL 0150

4331071 STRA BANDITO 8132

LARSON PALADIN 238

VGW PAL-DORA 1675

3554061 VGW RK-DORA 1118

BW	DAM AGE	205 ADJ WT	PRJ SALE WT
76	7	616	1305

• 311 is twin to VGW 312. His dam, Dora 1675 weaned ADJ 1270 WW on the two bull calves. Tremendous production with top 1% WW EPD's on 311 and his Admiral 0150 sire. Not the largest in the offering, he is smooth and thick. Top 5% EPD's: Sire WW 1, YW 3.

• 311 Top EPD %'s: WW 1, YW 4, ADG 18, Marb 20, FAT 12.  
• VGW 7 generation dam. MPPA 99.

EPDs	
ProS	88
HB	49
GM	38
CED	11
BW	0
WW	84
YW	128
MK	26
ME	8
HPG	13
CEM	8
ST	13
MARB	0.59/34
YG	0.05/29
REA	0.09/34



**VGW ADMIRAL 329**

**BULL**

Reg: 4766867 • VGW 329 • Clvd: 02-06-2023 • 100% 1A

STRA ADMIRAL 0150

4331071 STRA BANDITO 8132

5L RED STEEL 3521-10A

5L HAZEL 4883-2405

3493657 5L HAZEL 257-4883

BW	DAM AGE	205 ADJ WT	PRJ SALE WT
84	8	648	1275

• The first comment we hear about 329 is how sound he is on his is feet and legs, and his exceptional walk out. The Admiral 0150 sire is known for great feet. 329 has stout rib, dense lower quarter and he's bred to sire calves with top flight performance like his sire. Top 5% EPD's: Sire - WW 1, YW 3.

• 329 Top EPD %'s: HPG 19.  
• Purchased dam. MPPA 97.

EPDs	
ProS	63
HB	49
GM	14
CED	11
BW	-1.9
WW	66
YW	101
MK	22
ME	7
HPG	13
CEM	6
ST	14
MARB	0.36/34
YG	0.05/29
REA	0.05/35



**VGW ADMIRAL 312**

**BULL**

Reg: 4767295 • VGW 312 • Clvd: 02-01-2023 • 100% 1A

STRA ADMIRAL 0150

4331071 STRA BANDITO 8132

LARSON PALADIN 238

VGW PAL-DORA 1675

3554061 VGW RK-DORA 1118

BW	DAM AGE	205 ADJ WT	PRJ SALE WT
63	7	654	1245

• This set of Admiral's sons have the composition and stretch of their sire. 335 has a light 63 BW and is a long bull on a modest sized body structure, with big rib and wide quarter. His twin is VGW 311. We've retained three daughters and sold one bull out of their Dora 1675 dam. Top 5% EPD's: Sire - WW 1, YW 3.

• 312 Top EPD %'s: HB 20, WW 2, YW 7.  
• VGW 7 generation dam. MPPA 99.

EPDs	
ProS	78
HB	68
GM	11
CED	11
BW	-0.3
WW	82
YW	123
MK	26
ME	8
HPG	13
CEM	8
ST	16
MARB	0.34/15
YG	0.09/15
REA	-0.04/19



**VGW ADMIRAL 334**

**BULL**

Reg: 4767019 • VGW 334 • Clvd: 02-07-2023 • 100% 1A

STRA ADMIRAL 0150

4331071 STRA BANDITO 8132

LSF MEW X-FACTOR 6693D

LSF SRR CRYSTAL C5182 G9319

4111594 LSF SRR CRYSTAL C5182

BW	DAM AGE	205 ADJ WT	PRJ SALE WT
83	4	690	1380

• There's just not enough adjectives to talk about the attributes of the Admiral sons. 334 has a seamless profile with a strong body, deep middle and loads of red meat from front to back. When you find him on sale day, study him closely. Top 5% EPD's: Sire - WW 1, YW 3; Dam - GM 1, Marb 2

• 334 Top EPD %'s: ProS 18, HB 15, WW 1, YW 2, ADG 9, HPG 3, CW 18.  
• Purchased dam. MPPA 100.

EPDs	
ProS	111
HB	71
GM	39
CED	12
BW	-0.5
WW	88
YW	135
MK	27
ME	7
HPG	16
CEM	7
ST	15
MARB	0.47/34
YG	0.07/29
REA	0.12/34



**BLL A163 MINDBENDER 21H**  
**SIRE OF LOTS 76-81**



**LOT 76 - VGW MINDBENDER 3105**



**VGW ADVANTAGE 343**

**BULL**

Reg: 4766803 • VGW 343 • Clvd: 02-08-2023 • 100% 1A

STRA GENERAL 882  
**STRA ADMIRAL 0150**  
 4331071 STRA BANDITO 8132  
 5L SMOKE SIGNAL 756-176V  
**VGW SS-STAR 1348**  
 1630355 VGW JUL-STAR 0932

BW	DAMAGE	205 ADJ WT	PRJ SALE WT
85	10	802	1565

- This Admiral son is out of VGW SS-Star 1348, the dam of our Cinch herd sire. 343 is top 1% in WW and YW and had an 802 Adj WW, 113 WWR. His sire and dam also sport dynamic performance numbers, and his 10-year-old Star dam has 106 MPPA. Top 5% EPD's: Sire - WW 1, YW 3; Dam - WW 2, YW 5, HPG 1.
- 343 Top EPD %'s: WW 1, YW 1, ADG 16, HPG 2, CEM 19, Marb 19, CW 8, FAT 16.
- VGW 7 generation dam. MPPA 106.

EPDs	
ProS	74
HB	48
GM	26
CED	13
BW	-1.2
WW	93
YW	136
MK	27
ME	12
HPG	17
CEM	9
ST	11
MARB	0.59/34
YG	0.12/29
REA	-0.02/34



**VGW MINDBENDER 3105**

**BULL**

Reg: 4767027 • VGW 3105 • Clvd: 03-19-2023 • 100% 1A

3SCC DOMAIN A163  
**BLL A163 MINDBENDER 21H**  
 4348045 BLL MS SUN KING 2F  
 BECKTON NEW ERA B446 E2  
**VGW 446-DORA 19100**  
 4142470 VGW R667-DORA 0813

BW	DAMAGE	205 ADJ WT	PRJ SALE WT
85	4	768	1510

- One of the youngest bulls in the sale, 3105 is deep and wide. Couple his birth date with outstanding weaning performance of 768 Adj WW, 108 WWR and put him on your short list to see sale day. Top 5% EPD's: Sire - WW 5, Marb 5; Dam - MK 2.
- 3105 Top EPD %'s: WW 4, YW 4, ADG 5, MK 2, HPG 10, CW 15.
- VGW 8 generation dam. MPPA 104.

EPDs	
ProS	84
HB	43
GM	41
CED	7
BW	0.4
WW	79
YW	129
MK	34
ME	11
HPG	14
CEM	2
ST	16
MARB	0.44/32
YG	0.15/28
REA	0.06/32



**VGW ADMIRAL 346**

**BULL**

Reg: 4767061 • VGW 346 • Clvd: 02-09-2023 • 100% 1A

STRA GENERAL 882  
**STRA ADMIRAL 0150**  
 4331071 STRA BANDITO 8132  
 VGW EDITOR 702  
**VGW ED-STAR 1924**  
 4142762 VGW 905-STAR 11115

BW	DAMAGE	205 ADJ WT	PRJ SALE WT
89	4	697	1335

- A moderate sized Admiral son, 346 has a deep shaped hind quarter, with a sound profile and straight underline. With a masculine look, he sports top tier EPD's. His sire has 8 top 25% EPD's and the dam has 6. Top 5% EPD's: Sire - WW 1, YW 3.
- 346 Top EPD %'s: HP 17, WW 4, YW 8, ADG 20, HPG 15, ST 16, YG 4, FAT 2.
- VGW 8 generation dam. MPPA 102.

EPDs	
ProS	80
HB	69
GM	10
CED	10
BW	-1
WW	78
YW	121
MK	28
ME	10
HPG	14
CEM	6
ST	18
MARB	0.32/33
YG	-0.09/28
REA	0.16/33



**VGW MINDBENDER 3111**

**BULL**

Reg: 4767091 • VGW 3111 • Clvd: 03-25-2023 • 100% 1A

3SCC DOMAIN A163  
**BLL A163 MINDBENDER 21H**  
 4348045 BLL MS SUN KING 2F  
 3SCC DETAIL E87  
**VGW DET-FIREFLY 2086**  
 4272387 VGW WK-FIREFLY 1184

BW	DAMAGE	205 ADJ WT	PRJ SALE WT
86	3	760	1450

- A young prospect, this Mindbender son weaned 760 Adj WW, 107 WWR. He's an attractive, square prospect that can sire striking daughters and put loads of muscle on steers headed to a feed yard. Top 5% EPD's: Sire - WW 5, Marb 5; Dam - ST 1.
- 3111 Top EPD %'s: WW 16, MK 8, ST 15, Marb 8.
- VGW 7 generation dam. MPPA 99, pictured on page 29.

EPDs	
ProS	94
HB	59
GM	35
CED	9
BW	0.1
WW	71
YW	103
MK	32
ME	8
HPG	13
CEM	4
ST	18
MARB	0.73/32
YG	0.06/29
REA	0.12/35



**VGW MINDBENDER 327**

**BULL**

Reg: 4766815 • VGW 327 • Clvd: 02-05-2023 • 100% 1A

3SCC DOMAIN A163

**BLL A163 MINDBENDER 21H**

4348045 BLL MS SUN KING 2F

TR JUBILATION XT009

**VGW JUB-INDIGO 1393**

1630468 VGW 396V-INDIGO 1090

BW	DAMAGE	205 ADJ WT	PRJ SALE WT
83	10	722	1340

- With his tremendous WW and YW EPD's in the top 1%, this Mindbender 21H son can stretch out his calves and add pounds, and carcass character. His 10-year old Indigo-Jubilation dam has five retained daughters in herd and sold one son in our sale. Top 5% EPD's: Sire - WW 5, Marb 5.
- 327 Top EPD %'s: ProS 17, WW 1, YW 1, ADG 3, HPG 17, ST 13, Marb 16.
- VGW 6 generation dam. MPPA 98.

EPDs	
ProS	111
HB	61
GM	50
CED	8
BW	1.4
WW	85
YW	138
MK	29
ME	6
HPG	13
CEM	3
ST	17
MARB	0.62/33
YG	0.19/30
REA	0.02/37



**VGW MINDBENDER 384**

**BULL**

Reg: 4767119 • VGW 384 • Clvd: 02-28-2023 • 100% 1A

3SCC DOMAIN A163

**BLL A163 MINDBENDER 21H**

4348045 BLL MS SUN KING 2F

3SCC DETAIL E87

**VGW DET-FIREFLY 2054**

4272505 VGW A134-FIREFLY 1556

BW	DAMAGE	205 ADJ WT	PRJ SALE WT
85	3	713	1345

- A Mindbender son out of a beautiful 3SCC Detail daughter. The sire showcases nine top 20% EPD's in performance, maternal and carcass categories. He'll breed calves that come in at weaning with pounds, substance, and marbling potential. Top 5% EPD's: Sire - WW 5, Marb 5; Dam - ST 4.
- 384 Top EPD %'s: WW 15, MK 16, HPG 20, ST 15, Marb 5.
- VGW 10 generation dam. MPPA 101.

EPDs	
ProS	92
HB	55
GM	37
CED	7
BW	0.7
WW	71
YW	107
MK	30
ME	8
HPG	13
CEM	2
ST	18
MARB	0.77/34
YG	0.13/28
REA	-0.13/33



**VGW MINDBENDER 350**

**BULL**

Reg: 4766843 • VGW 350 • Clvd: 02-10-2023 • 100% 1A

3SCC DOMAIN A163

**BLL A163 MINDBENDER 21H**

4348045 BLL MS SUN KING 2F

LARSON PALADIN 238

**VGW PAL-DORY 1511**

3475921 VGW SS-DORY 1337

BW	DAMAGE	205 ADJ WT	PRJ SALE WT
79	8	671	1300

- With a long head and clean front and shoulder, simply put, 350 is the right kind. His MGD is a tremendous cow from a long standing Beery Ranch pedigree. He's thick sided, with a moderate build. 3SCC Domain A163 has 9 top 25% EPD values, with Top 5% EPD's: Sire - Marb 5%.
- 350 Top EPD %'s: WW 5, Marb 5.
- VGW 7 generation dam. MPPA 94.

EPDs	
ProS	104
HB	56
GM	48
CED	11
BW	-0.6
WW	62
YW	92
MK	29
ME	1
HPG	12
CEM	6
ST	16
MARB	0.90/32
YG	0.01/29
REA	0.12/33



**VGW ENVIOUS 396**

**BULL**

Reg: 4767063 • VGW 396 • Clvd: 03-10-2023 • 100% 1A

BECKTON ACCENT D365 L3

**HXC EXCEED 0004H**

4360353 HXC 608D

RREDS PIONEER 6904

**VGW PIO-HAZY 1946**

4142792 VGW DD-HAZY 1328

BW	DAMAGE	205 ADJ WT	PRJ SALE WT
80	4	794	1420

- Here's a large, square sire prospect that is young in the offering. Even so, he weaned a tremendous 794 Adj WW, 111 WWR, putting him right up with the top of the calf crop weaning stats. His Hazy dam had a top selling heifer in 2023. Top 5% EPD's: Sire - MK 3.
- 396 Top EPD %'s: HB 9, WW 12, YW 15, MK 4, HPG 16, ST 6.
- VGW 7 generation dam. MPPA 101.

EPDs	
ProS	96
HB	78
GM	18
CED	13
BW	-2.4
WW	72
YW	115
MK	33
ME	10
HPG	14
CEM	7
ST	19
MARB	0.48/32
YG	0.11/28
REA	0.05/33



**VGW MINDBENDER 362**

**BULL**

Reg: 4766839 • VGW 362 • Clvd: 02-16-2023 • 100% 1A

3SCC DOMAIN A163

**BLL A163 MINDBENDER 21H**

4348045 BLL MS SUN KING 2F

BECKTON ACCENT A134 E3

**VGW A134-FIREFLY 1556**

3475845 VGW U236-FIREFLY 1338

BW	DAMAGE	205 ADJ WT	PRJ SALE WT
85	8	661	1305

- 362 is a Mindbender son with extra strong top, and wide, wide stance. His sire's EPD's include top 18% ProS and 24% GM. We retained two daughters by 1556, and she sold a top son in last year's sale, also out of Mindbender 21H. Top 5% EPD's: Sire - WW 5, Marb 5.
- 362 Top EPD %'s: Marb 11.
- VGW 9 generation dam. MPPA 99.

EPDs	
ProS	101
HB	59
GM	42
CED	10
BW	-1.3
WW	67
YW	107
MK	28
ME	6
HPG	13
CEM	5
ST	16
MARB	0.67/33
YG	0.08/29
REA	-0.07/35



**LOT 82 - VGW ENVIOUS 396**





**VGW EXCEED 397**

**BULL**

Reg: 4767179 • VGW 397 • Clvd: 03-11-2023 • 100% 1A

BECKTON ACCENT D365 L3

**HXC EXCEED 0004H**

4360353 HXC 608D

WFL MERLIN 018A

**LSF SRR MINOLA E7025 H0128**

4276615 LSF SRR MINOLA C5052 E7025

BW	DAM AGE	205 ADJ WT	PRJ SALE WT
84	3	655	1310

- Both lines of this pedigree give 397 tremendous milk and productive maternal traits. Join that with his ProS, HB, and superb carcass traits, for daughters that stay in the herd, and steers that will be exciting to see coming toward the truck when you load feeder calves. Top 5% EPD's: Sire - MK 3, Dam top 4% in MK, YG & REA.
- 397 Top EPD %'s: ProS 17, HB 15, MK 1, ST 15, YG 10, REA 13.
- Purchased dam. MPPA 101.

EPDs	
ProS	113
HB	72
GM	41
CED	11
BW	-1.1
WW	69
YW	107
MK	35
ME	4
HPG	12
CEM	7
ST	18
MARB	0.48/18
YG	-0.03/17
REA	0.34/21



**VGW EXCEED 316P**

**BULL**

Reg: 4766969 • VGW 316P • Clvd: 03-07-2023 • 99.9% 1B

BECKTON ACCENT D365 L3

**HXC EXCEED 0004H**

4360353 HXC 608D

VGW BUMPER CROP 510

**VGW BC-RED P1811**

3973598 VGW RTR-RED P1116

BW	DAM AGE	205 ADJ WT	PRJ SALE WT
90	5	735	1430

- Here's a prospect bred to produce extra pounds at weaning. An Exceed x Bumper Crop son, he has an all-around attractive profile with strong muscle expression and a deep, thick structure. His sire was #1 Adj WW in his HXC calf crop, and #4 Adj YW. Top 5% EPD's: Sire - MK 3.
- 316P Top EPD %'s: MK 3, Marb 19.
- VGW 8 generation dam. MPPA 104.

EPDs	
ProS	89
HB	50
GM	39
CED	11
BW	-0.6
WW	59
YW	91
MK	34
ME	9
HPG	12
CEM	6
ST	16
MARB	0.59/30
YG	0.07/26
REA	0.10/32



**VGW EXTRA 390**

**BULL**

Reg: 4766847 • VGW 390 • Clvd: 03-02-2023 • 100% 1A

BECKTON ACCENT D365 L3

**HXC EXCEED 0004H**

4360353 HXC 608D

LARSON PALADIN 238

**VGW PAL-STAR 1596**

3475952 VGW U099-STAR 1267

BW	DAM AGE	205 ADJ WT	PRJ SALE WT
87	8	773	1420

- When you want just right size, dimension, and numbers beyond compare, use VGW bulls to put your program on a productive path. This Exceed 004H son is a standard bearer with a timeless style and type. He has an extra deep quarter, and visual appeal. Star family females are productive, strong milking females. Top 5% EPD's: Sire - MK 3.
- 390 Top EPD %'s: WW 10, MK 6, ST 12.
- VGW 9 generation dam. MPPA 102.

EPDs	
ProS	92
HB	65
GM	27
CED	11
BW	-0.5
WW	74
YW	111
MK	33
ME	4
HPG	11
CEM	5
ST	18
MARB	0.48/32
YG	0.06/27
REA	0.10/32



**VGW EXCEED 344**

**BULL**

Reg: 4767175 • VGW 344 • Clvd: 02-08-2023 • 100% 1A

BECKTON ACCENT D365 L3

**HXC EXCEED 0004H**

4360353 HXC 608D

WFL MERLIN 018A

**LSF SRR COV GIRL F8220 H0012**

4276385 LSF SRR COVR GRL D6430 F8220

BW	DAM AGE	205 ADJ WT	PRJ SALE WT
68	3	697	1350

- A mix of top performance EPD's and top 1% Milk on 344, as well as top 3% MK sire, and 1% MK dam, there's sure to be grow, pounds and great milking daughters here. He has a wide top with abundant size and extra-long sides. Twin to 345. Top 5% EPD's: Sire - MK 3; Dam - WW 4, MK 1, REA 3.
- 344 Top EPD %'s: GM 9, WW 2, YW 1, ADG 2, MK 1, CW 4, REA 7.
- Purchased dam. MPPA 110.

EPDs	
ProS	101
HB	38
GM	63
CED	13
BW	-1.1
WW	83
YW	136
MK	37
ME	9
HPG	12
CEM	7
ST	12
MARB	0.46/32
YG	0.09/29
REA	0.43/35



**JKW 303 RICO**

**BULL**

Reg: 4767375 • JKW 303 • Clvd: 03-08-2023 • 100% 1A

BECKTON ACCENT D365 L3

**HXC EXCEED 0004H**

4360353 HXC 608D

LASO FOUNDATION D168F

**JKW 2003 KIT**

4289255 JKW 1601

BW	DAM AGE	205 ADJ WT	PRJ SALE WT
79	3	673	1390

- If you want a set of like-type prospects, put a group of Exceed sons in your pastures. Strong in maternal traits, JKW 303 adds exceptional top 20% EPD's in ProS, HB, GM, HPG and Marb from his LASO Foundation D168F dam. Top 5% EPD's: Sire - MK 3.
- JKW 303 Top EPD %'s: HB 16, MK 16, HPG 19, ST 13.
- VGW 9 generation dam. MPPA 100.

EPDs	
ProS	102
HB	71
GM	31
CED	12
BW	-2.1
WW	68
YW	107
MK	30
ME	6
HPG	13
CEM	6
ST	18
MARB	0.46/31
YG	0.14/27
REA	0.06/32



**VGW EXCEED 345**

**BULL**

Reg: 4767303 • VGW 345 • Clvd: 02-08-2023 • 100% 1A

BECKTON ACCENT D365 L3

**HXC EXCEED 0004H**

4360353 HXC 608D

WFL MERLIN 018A

**LSF SRR COV GIRL F8220 H0012**

4276385 LSF SRR COVR GRL D6430 F8220

BW	DAM AGE	205 ADJ WT	PRJ SALE WT
66	3	630	1200

- At just 66 BW, 345 is twin to 344. The Exceed 004H sons are full of grow, performance, and milk. He is wide across the hind quarter and his Merlin dam has a tremendous 110 MPPA. 018A is a curve bender sire in calving ease, grow, and carcass. Top 5% EPD's: Sire - MK 3; Dam - WW 4, MK 1, REA 8.
- 345 Top EPD %'s: WW 9, YW 14, MK 1, YG 13, REA 8.
- Purchased dam. MPPA 110.

EPDs	
ProS	84
HB	36
GM	48
CED	14
BW	-2.4
WW	74
YW	116
MK	37
ME	9
HPG	12
CEM	8
ST	12
MARB	0.51/17
YG	-0.01/17
REA	0.39/21



## VGW RAZ 3102

BULL

Reg: 4767087 • VGW 3102 • Clvd: 03-17-2023 • 100% 1A

PIE SENECA 7168

TJS RAZMATAZ G001

4222360

TJS PRIDE Y176

KCC EAGER 525-715

VGW EAG-SARA 2059

4272375

VGW 396V-SARA 1084

BW	DAMAGE	205 ADJ WT	PRJ SALE WT
89	3	808	1435

- This attractive Razmataz son has a robust middle, and he stands on an exacting square stance. One of the top weaning bulls, his 808 Adj WW, with 113 WWR is matched by a deep quarter and square hind end. Top 5% EPD's: Sire - WW 3, YW 2, ADG 3; Dam - HPG 1.
- 3102 Top EPD %'s: WW 1, YW1, ADG 1, MK 19, CW 13.
- VGW 3 generation dam. MPPA 104.

EPDs	
ProS	31
HB	32
GM	-1
CED	10
BW	2.2
WW	91
YW	150
MK	30
ME	18
HPG	13
CEM	7
ST	12
MARB	-0.01/30
YG	0.15/28
REA	0.09/34



## VGW RAZ 326

BULL

Reg: 4766829 • VGW 326 • Clvd: 02-05-2023 • 100% 1A

PIE SENECA 7168

TJS RAZMATAZ G001

4222360

TJS PRIDE Y176

LARSON PALADIN 238

VGW PAL-STAR 1405

1696347

VGW U199-STAR 1235

BW	DAMAGE	205 ADJ WT	PRJ SALE WT
76	9	683	1350

- Razmataz sons are the definition of soundness, and they have the breeding to add length, grow and pounds to their calves. 326 has a wide back, and deep, square quarter with a tight underline. Performance assured – the calves will be heavy at weaning time. Top 5% EPD's: Sire - WW 3, YW 2, ADG 3; Dam - ME 3.
- VGW 9 generation dam. MPPA 98.

EPDs	
ProS	42
HB	38
GM	3
CED	12
BW	-2.3
WW	68
YW	95
MK	28
ME	5
HPG	12
CEM	8
ST	12
MARB	0.53/31
YG	0.19/28
REA	-0.28/33



## VGW ROCK 380

BULL

Reg: 4766863 • VGW 380 • Clvd: 02-27-2023 • 100% 1A

PIE SENECA 7168

TJS RAZMATAZ G001

4222360

TJS PRIDE Y176

5L CRAFTSMAN 1134-150X

5L MARTHA 1952-5065

3484045

5L MARTHA 3450-1952

BW	DAMAGE	205 ADJ WT	PRJ SALE WT
86	8	725	1470

- 380 is sure to impress everyone that finds him on sale day. He's thick end to end and is as square and deep ribbed as any bull in the offering. Rock 380 is complete and eye appealing and this Razmataz G001 son is solid deep through his middle, quarter, and hind legs. Top 5% EPD's: Sire - WW 3, YW 2, ADG 3.
- 380 Top EPD %'s: Marb 13.
- Purchased dam. MPPA 101.

EPDs	
ProS	51
HB	26
GM	25
CED	8
BW	-0.7
WW	66
YW	104
MK	28
ME	14
HPG	12
CEM	5
ST	13
MARB	0.64/31
YG	0.20/28
REA	-0.21/32



LOT 90 - VGW ROCK 380

**The legacy is important at Westphal Red Angus...**

Westphal's have been improving Red Angus genetics for over forty five years, giving this offering nearly a half century of cow power, stability, and progress. Rancher needs are kept in mind when they make breeding decisions. Twenty established cow families, some with as many as 12-14 generations behind them, are represented in this sale. In addition, a handful of premier distaff lines have recently been added in the herd. Bulls from Westphal bloodlines are used to further develop VGW breeding essentials, and top bulls are purchased or used AI from programs across North America. Generations are turned, and genetically sound improvement is realized through the performance of the entire herd.



**JKW 302 CHIP**

**BULL**

Reg: 4767373 • JKW 302 • Clvd: 02-24-2023 • 100% 1A

PIE SENECA 7168

**TJS RAZMATAZ G001**

4222360 TJS PRIDE Y176

VGW EDITOR 702

**JKW 2002 BETSY**

4289253 JKW HS-DORA 1502

BW	DAM AGE	205 ADJ WT	PRJ SALE WT
85	3	659	1405

- A smart looking Razmataz son, he's out of 3-year-old JKW 2002 Betsy. She's a dam with 7 top 20% EPD's, from our feminine, productive Dora cow family. We appreciate his solid, wide flat back, his thick middle and clean front end. Top 5% EPD's: Sire - WW & ADG 3, YW 2.
- JKW 302 Top EPD %'s: YW 13, ADG 7.
- VGW 8 generation dam. MPPA 97.

EPDs	
ProS	51
HB	26
GM	25
CED	11
BW	-0.3
WW	68
YW	117
MK	25
ME	12
HPG	12
CEM	6
ST	12
MARB	0.38/32
YG	0.15/28
REA	-0.17/32



**VGW FOUNDATION 381**

**BULL**

Reg: 4766961 • VGW 381 • Clvd: 02-28-2023 • 100% 1A

C-BAR CORNERSTONE 105D

**LASO FOUNDATION D168F**

3932305 LASO DORY JIBA B29D

5L BOURNE FIRE 5353-52C

**VGW BF-DORY 1847**

3973548 VGW WK-DORY 1189

BW	DAM AGE	205 ADJ WT	PRJ SALE WT
90	5	739	1415

- Foundation 381 is by LASO D168F who has top EPD's in ProS and GM. With very strong scrotal development, he is smooth from his front into his shoulders, with ample size, substance, and beefiness. The Dory cow came through our tough conditions with this strong prospect. Top 5% EPD's: Sire - ProS 8, GM 5, Marb 1.
- 381 Top EPD %'s: GM 17, WW 6, YW 5, ADG 5, HPG 6, CW 11, FAT 7.
- VGW 4 generation dam. MPPA 101.

EPDs	
ProS	73
HB	15
GM	58
CED	8
BW	1.7
WW	77
YW	127
MK	27
ME	7
HPG	15
CEM	3
ST	9
MARB	0.53/33
YG	0.01/28
REA	0.26/33



**VGW RAZ 376**

**BULL**

Reg: 4767007 • VGW 376 • Clvd: 02-24-2023 • 100% 1A

PIE SENECA 7168

**TJS RAZMATAZ G001**

4222360 TJS PRIDE Y176

VGW CINCH 503

**VGW CIN-FIREFLY 1820**

3973864 VGW ADV-FIREFLY 15104

BW	DAM AGE	205 ADJ WT	PRJ SALE WT
84	5	666	1335

- Here's a prepotent Razmataz sire prospect with large scrotal, a smooth moving walk out and breed topping performance percentiles. His Cinch 803-Firfly seven generation dam sold a son in last year's sale. Top 5% EPD's: Sire - WW 3, YW 2, ADG 3.
- 376 Top EPD %'s: YW 15, ADG 10, HPG 13.
- VGW 7 generation dam. MPPA 101.

EPDs	
ProS	47
HB	38
GM	9
CED	13
BW	-0.9
WW	68
YW	116
MK	26
ME	13
HPG	14
CEM	8
ST	13
MARB	0.23/30
YG	0.15/27
REA	-0.10/32



**VGW FOUNDATION 3103**

**BULL**

Reg: 4766885 • VGW 3103 • Clvd: 03-17-2023 • 100% 1A

C-BAR CORNERSTONE 105D

**LASO FOUNDATION D168F**

3932305 LASO DORY JIBA B29D

ANDRAS FUSION R236

**VGW FUS-STAR 1601**

3554143 VGW MS-STAR 1438

BW	DAM AGE	205 ADJ WT	PRJ SALE WT
87	7	726	1390

- Here's a long headed younger bull with a top EPD sire, the Foundation bull, who has very strong ProS, GM and Marb. Foundation 3103 has been a solid muscled prospect his whole life and we appreciate his high performance stats. His Star dam is the mother of herd sire Cutting Edge 807. Top 5% EPD's: Sire ProS 8, GM 5, Marb 1.
- 3103 Top EPD %'s: WW 4, YW 4, ADG 5, Marb 15.
- VGW 11 generation dam. MPPA 102.

EPDs	
ProS	100
HB	52
GM	48
CED	12
BW	-1.3
WW	79
YW	131
MK	28
ME	7
HPG	12
CEM	7
ST	14
MARB	0.62/34
YG	0.15/29
REA	-0.05/34



**VGW RAZ 311P**

**BULL**

Reg: 4767117 • VGW 311P • Clvd: 02-25-2023 • 99.8% 1B

PIE SENECA 7168

**TJS RAZMATAZ G001**

4222360 TJS PRIDE Y176

LASO FOUNDATION D168F

**VGW FO-RED P2006**

4272493 VGW U199-RED P1413

BW	DAM AGE	205 ADJ WT	PRJ SALE WT
84	3	794	1545

- 311P is a "must find" on sale day. With a tremendous Adj 794 WW, he's a universal sire prospect that can be used on heifers or cows. Performance, red meat, and maternal character enhance each other in this prospect. Top 5% EPD's: Sire - WW 3, YW 2, ADG 3; Dam - Marb 3; seven other top 20% EPD's.
- 311P Top EPD %'s: GM 16, WW 3, YW 2, ADG 1, MK 15, HPG 17, Marb 5, CW 17.
- VGW 8 generation dam. MPPA 104.

EPDs	
ProS	100
HB	43
GM	57
CED	10
BW	0.4
WW	81
YW	136
MK	30
ME	20
HPG	13
CEM	7
ST	15
MARB	0.77/30
YG	0.17/28
REA	-0.05/32



**VGW FOUNDATION 388**

**BULL**

Reg: 4766891 • VGW 388 • Clvd: 03-02-2023 • 100% 1A

C-BAR CORNERSTONE 105D

**LASO FOUNDATION D168F**

3932305 LASO DORY JIBA B29D

5L HOT SHOT 2370-186A

**VGW HS-STAR 1657**

3554182 VGW 905-STAR 11115

BW	DAM AGE	205 ADJ WT	PRJ SALE WT
80	7	696	1415

- This LASO Foundation son is a prospect with top GM, along with his sire. He'll be set to get to work when you let him hit the pasture. The dam, Star 1657, goes back to Zimmer's Red Angus females we purchased in the 70's-80's. Top 5% EPD's: Sire - ProS, GM 5, Marb 1.
- 388 Top EPD %'s: GM 4, YW 9, ADG 3, Marb 4, YG 19, FAT 10.
- VGW 8 generation dam. MPPA 99.

EPDs	
ProS	105
HB	36
GM	69
CED	11
BW	-1.9
WW	68
YW	118
MK	28
ME	10
HPG	12
CEM	6
ST	14
MARB	0.80/34
YG	0.00/30
REA	0.16/34



**VGW RAIDER 377**

**BULL**

Reg: 4766985 • VGW 377 • Clvd: 02-24-2023 • 100% 1A

PIE QUARTERBACK 789

**CHC RIP 2125**

**4293505**

9 MILE CHINOOK 6309

LJC ICEMAN 411D

**VGW IM-INDIGO 1880**

**3973682**

VGW GY-INDIGO 1439

BW	DAM AGE	205 ADJ WT	PRJ SALE WT
<b>79</b>	<b>5</b>	<b>740</b>	<b>1420</b>

- Here's a prospect for a cow or heifer pasture. 377 started with a 79 BW and spread to a 740 Adj WW. An eye-catching bull, he's clean through his front and stands on a very strong foundation. Top 5% EPD's: Sire - CED 3, BW 3; Dam - WW 3, YW 4.
- 377 Top EPD %'s: CED 9, WW 4, YW 3, ADG 4, HPG 13, CEM 8, FAT 15.
- VGW 6 generation dam. MPPA 100.

EPDs	
ProS	<b>93</b>
HB	<b>48</b>
GM	<b>45</b>
CED	<b>17</b>
BW	<b>-3</b>
WW	<b>80</b>
YW	<b>132</b>
MK	<b>27</b>
ME	<b>13</b>
HPG	<b>14</b>
CEM	<b>10</b>
ST	<b>13</b>
MARB	<b>0.55/32</b>
YG	<b>0.05/28</b>
REA	<b>0.04/33</b>



**VGW RIP 3112**

**BULL**

Reg: 4767009 • VGW 3112 • Clvd: 03-27-2023 • 100% 1A

PIE QUARTERBACK 789

**CHC RIP 2125**

**4293505**

9 MILE CHINOOK 6309

BECKTON NEW ERA B446 E2

**VGW 446-FIREFLY 1872**

**3973886**

VGW WK-FIREFLY 1184

BW	DAM AGE	205 ADJ WT	PRJ SALE WT
<b>79</b>	<b>5</b>	<b>693</b>	<b>1265</b>

- The youngster in the sale this year, this CHC Rip 2125 son has a deep, square hind quarter and he has a modest size. His sire has seven top category EPD's including an 11 ProS and 9 GM, and his Firefly dam has a 106 MPPA. Top 5% EPD's: Sire - CED 3, BW 3; Dam - MK 1.
- 3112 Top EPD %'s: BW 13, MK 3, Marb 16, YG 8, FAT 7.
- VGW 7 generation dam. MPPA 106.

EPDs	
ProS	<b>101</b>
HB	<b>52</b>
GM	<b>49</b>
CED	<b>14</b>
BW	<b>-4.3</b>
WW	<b>61</b>
YW	<b>98</b>
MK	<b>34</b>
ME	<b>10</b>
HPG	<b>12</b>
CEM	<b>7</b>
ST	<b>16</b>
MARB	<b>0.61/32</b>
YG	<b>-0.04/27</b>
REA	<b>0.16/33</b>

**EXPLANATION OF CODES**

**We provide extensive information on our sale cattle, including...**

- BW, dam age, Adj WW and projected sale day weights.
- Dam MPPA is cataloged on each lot.
- 15 EPD categories on each bull and 12 on each heifer are cataloged. Top 20% or better EPDs are listed with the percentiles, in bull footnotes. Heifer top 20% or better EPDs are listed in footnotes.
- We did GGP-LD 50K genomic testing on our sale lots. See RAAA website for continually updated EPDs.



**A look at our information...**

**BW** – We take birth weights within 24 hours. Circumstances influencing birth include...

- BW influences calving ease by 65%.
- The dam has 60-70% influence on BW of calf. The bull has 30-40% influence.
- Pelvic measurement and angle, and shape of the calf, has 35-40% influence on calving ease.
- Length of gestation greatly affects birth weight.
- Temperature and weather the final 30 days of pregnancy affect gestation length.
- Maturity and size of the dam influences calving ease, especially in heifers.

All traits are relative. Increased growth and performance increase BW. If a calf has genetics for growth, this trait will present both pre and post birth. Continued selection for light BW will ultimately reduce the mature size and performance of cattle. A cow should easily give birth to a calf that weighs 8% of her body weight.

**205 ADJUSTED WEANING WEIGHTS**

Weaning weights are adjusted to 205 days, and for the age of the dam. Weaning weights primarily provide a measurement of the dam's milking ability, but also indicate differences in growth potential of a calf.

**PROJECTED SALE DAY WEIGHT**

The bulls were weighed in early February, and from the resulting yearling weights (adj) a projected sale day weight was calculated. They are projected for comparison use only.

**PERCENTAGE RED ANGUS**

**1A** - 100% Pureblood Red Angus — registered.

**1B** - 87% to 99% Red Angus — registered.

**Cat II** - Any animal that doesn't fit 1A or 1B status

**Comm.** - Commercial Red Angus - unregistered (no papers).

**EXPECTED PROGENY DIFFERENCES**

EPDs are a prediction of the difference between the average performance of future progeny of an individual, and the performance of progeny of a theoretical reference animal with an EPD of zero (0). EPDs are calculated from pedigree, individual performance and progeny. EPDs are the only measurement comparable across herds in the same breed.

EPD abbreviations: **ProS**: Profitability & Sustainability; **HB**: Herdbuilder; **GM**: Gridmaster; **CED**: Calving Ease Direct; **BW**: Birth Weight; **WW**: Weaning Weight; **YW**: Yearling Weight; **ADG**: Average Daily Gain; **DMI**: Dry Matter Intake **MK**: Milk; **ME**: Maintenance Energy; **HPG**: Heifer Pregnancy; **CEM**: Calving Ease Maternal; **ST**: Stayability; **MARB**: Marbling; **YG**: Yield Grade; **CW**: Carcass Weight; **REA**: Rib Eye Area; **FAT**: Backfat.

**ProS EPD Explained:**

ProS EPD, stands for Profitability and Sustainability index. It is an all-purpose index that covers economically relevant traits across all aspects of the beef supply chain from conception to carcass. This index works as a combination of the existing HerdBuilder and GridMaster indexes, which include traits from conception to weaning, and post-weaning to harvest, respectively. The ProS index is expressed in dollars per head born.

**RAAA EPDs change weekly:**

Epds and percentiles listed here were current on February 19, 2024 when we pulled our catalog information. Updated EPDs, percentiles and accuracies, as well as weights and MPPA values may be seen on any registered Red Angus at [www.redangus.org](http://www.redangus.org). When the sale offering's GGP-LD 50K information is finalized it is added to the Red Angus base, and EPDs will again update.

**Our Average EPDs are above breed average** in most categories year after year. See the breed averages and Westphal Red Angus EPD comparison chart on Page 2.

**SCROTAL MEASUREMENTS**

Scrotal centimeter measurements on all bulls will be available on the sale day supplement.



## VGW LEADING EDGE 317P

BULL

Reg: 4767121 • VGW 317P • Clvd: 03-08-2023 • 99.9% 1B

5L LEADING EDGE 15383-117C

1DRA LEADING EDGE 1004

4431239 1DRA HANNAH 927

VGW BUMPER CROP 510

VGW BC-RED P2019

4272507 VGW PAL-RED P1507

BW	DAMAGE	205 ADJ WT	PRJ SALE WT
79	3	676	1230

- Here's a prospect with performance meeting maternal, and 317P is a moderate prospect with clean, neat neck and shoulder. Sired by Leading Edge 1004, he's out of a three-year-old dam with ten generations of VGW Red cow family breeding history. Top 5% EPD's: Sire - MK 3.
- 317P Top EPD %'s: WW 5, YW 9, MK 20, HPG 20.
- VGW 10 generation dam. MPPA 97.

EPDs	
ProS	96
HB	60
GM	35
CED	13
BW	-0.7
WW	78
YW	121
MK	30
ME	8
HPG	13
CEM	8
ST	15
MARB	0.49/31
YG	0.06/27
REA	0.13/32



## VGW WAR CHIEF 366

BULL

Reg: 4767253 • VGW 366 • Clvd: 02-20-2023 • 100% 1A

LSF SRR COMMANDER 5906C

LSF WAR CHIEF 0657H

4405575 LSF SRR RAINDANC B4009 F8338

VGW SHOWDOWN 806

VGW SD-TABITHA 2153

4428671 VGW IM-TABITHA 1817

BW	DAMAGE	205 ADJ WT	PRJ SALE WT
63	2	753	1455

- 366, born with a light 63 BW, went to work and weaned at 753 Adj WW, 106 WWR. War Chief 0657H has top EPD's of 5 GM, 6 YW, and 4 ADG. His calves will have spot-on birth weights, with growth and carcass to make very heavy weaning weights. Top 5% EPD's: Sire - GM 5, YW 6, ADG 4; Dam - MK 2, HPG 4.
- 366 Top EPD %'s: GM 8, BW 10, WW 20, MK 3, Marb 2.
- VGW 9 generation first calf heifer dam. MPPA 102.

EPDs	
ProS	99
HB	36
GM	64
CED	15
BW	-4.5
WW	70
YW	112
MK	33
ME	6
HPG	13
CEM	8
ST	11
MARB	0.87/31
YG	0.13/27
REA	0.07/32



## VGW BANK SHOT 355

BULL

Reg: 4766849 • VGW 355 • Clvd: 02-12-2023 • 100% 1A

LSF SRR PRESIDENT 8177F

LSF BRA BOSS 1832J

4472451 BRA VICTORIA Z2892 B4650

LOOSLI HOBO DESIGN 251

VGW 251-INDIGO 1565

3475986 VGW BB-INDIGO 1122

BW	DAMAGE	205 ADJ WT	PRJ SALE WT
88	8	676	1380

- Bank Shot 355 has substantial size, and if you want frame, stretch and dimension, here's a masculine prospect. His LSF BRA Boss 1832J sire has 10 top 20% EPD values with ProS 7, HB 12, and GM 18. We appreciate his length and grow-ability as he strides out across the pen.
- 355 Top EPD %'s: WW 8, YW 8, ADG 13, MK 15.
- VGW 5 generation dam. MPPA 99.

EPDs	
ProS	102
HB	64
GM	38
CED	10
BW	-0.7
WW	76
YW	123
MK	30
ME	-1
HPG	11
CEM	7
ST	15
MARB	0.55/31
YG	0.09/28
REA	0.21/34



LOT 101 - VGW BANK SHOT 355



DAM OF LOT 101

**Thank you**  
for your attendance and endoresement of  
**Westphal Red Angus.**  
We are committed to the pursuit of quality,  
problem-free, profitable Red Angus  
seedstock and commercial cattle.



**She's the  
Lifblood!**

The development of our cowherd over 45 plus years is really what you're purchasing, whether bulls or heifers. The cow families behind these yearlings have maternal strength, great milking ability, calving ease, and stay-ability. Great cows calve early every year, are docile and calm, with correct udder development. She weans a heavy calf each year and comes in bred, ready to go to work again. Reliability is bred into these heifers and our generations-deep cow families give you the opportunity to expand and enrich maternal power in your program.



**WESTPHAL  
103**

**VGW AM-DORA 23101**

COW

Reg: 4767069 • Tat: VGW 23101  
Civd: 02-12-2023 • 100% 1A  
BIEBER CL ATOMIC C218

VGW AMAZING 117

4428721

VGW MT-STAR 1971

5L BOURNE FIRE 5353-52C

VGW BF-DORA 1980

4142834

VGW MER-DORA 1618

BW	DAM AGE	205 ADJ WT	DAM MPPA
83	4	741	109

EPDs	
ProS	58
HB	27
GM	32
CED	8
BW	2.1
WW	93
YW	151
MK	31
ME	18
HPG	12
CEM	4
ST	13

- Her Dora dam has an amazing 109 MPPA, highest in the offering. 23101 is impressive end to end, and corner to corner. She's loaded with substance of body, strength of top and can take cow power to another level. She weaned at 741 Adj WW, 113 WWR. Her dam sold a top female in our 2021 sale to a registered breeder, and we have one daughter retained.
- Top % EPD's: WW 1, YW 1, ADG 2, MK 9, YG 12, CW 2, REA 8, Fat 3.
- 23101: VGW 11 generation dam.



**LOT 103 - VGW AM-DORA 23101**

**WESTPHAL  
104**

**VGW MB-CHRSS 2326**

COW

Reg: 4766931 • Tat: VGW 2326  
Civd: 02-06-2023 • 100% 1A  
3SSC DOMAIN A163

BLL A163 MINDBENDER 21H

4348045

BLL MS SUN KING 2F

JACOBSON MOUTAINEER 5076

VGW MT-CHRSS 1786

3764541

VGW JOUR-CHRSS 13123

BW	DAM AGE	205 ADJ WT	DAM MPPA
83	6	716	105

EPDs	
ProS	92
HB	58
GM	34
CED	8
BW	2.3
WW	86
YW	138
MK	33
ME	12
HPG	13
CEM	4
ST	17

- 2326 is a top weaning heifer, with an Adj WW of 716, 108 WWR, and top-flight EPD's. Dark red, this full bodied Mindbender daughter is one we took our time appraising before adding her to the sale offering. Her Chrss dam has an all-star 105 MPPA, she sold a son and a daughter in past sales, and we have two daughters in our program.
- Top % EPD's: WW 1, YW 1, ADG 3, MK 3, ST 16.
- 2326: VGW 9 generation heifer.



**LOT 104 - VGW MB-CHRSS 2326**



**LOT 105 - VGW AD-DORA 2355**



**LOT 107 - VGW ED-STAR 2359**

**WESTPHAL 105** **VGW AD-DORA 2355** **COW**

Reg: 4766857 • Tat: VGW 2355  
Clvd: 02-16-2023 • 100% 1A  
STRA GENERAL 882

**STRA ADMIRAL 0150**  
4331071 STRA BANDITO 8132

5L HOT SHOT 2370-186A

**VGW HS-DORA 1541**  
3476067 VGW GS-DORA 0659

BW	DAM AGE	205 ADJ WT	DAM MPPA
85	8	707	103

EPDs	
ProS	39
HB	23
GM	16
CED	7
BW	2.2
WW	87
YW	129
MK	27
ME	12
HPG	9
CEM	5
ST	12

- This Dora-Admiral heifer will be a tremendous mother cow. You'll like her length and femininity front to back. She has an ultra-correct build, a 707 Adj WW, 108WWR, and has been a favorite all winter. Her 1541 dam has sold 4 sons and a daughter in past sales.
- Top % EPD's: WW 1, YW 2, ADG 13, YG 10, CW 20, REA 6.
- 2355: VGW 10 generation heifer.

**WESTPHAL 107** **VGW ED-STAR 2359** **COW**

Reg: 4766905 • Tat: VGW 2359  
Clvd: 02-19-2023 • 100% 1A  
5L GAME ON 703-50C

**VGW EDITOR 702**  
3764711 5L SUNBUSRT 233-3355

RED U-2 RECKONING 294C

**VGW RECK-STAR 1771**  
3764281 VGW PAT-STAR 0914

BW	DAM AGE	205 ADJ WT	DAM MPPA
74	6	625	100

EPDs	
ProS	91
HB	51
GM	39
CED	14
BW	-2.5
WW	64
YW	104
MK	29
ME	2
HPG	10
CEM	6
ST	16

- Here's an ultra-feminine, superb fronted heifer with a strong angular body style. Her Editor sire is known for top 4% CED and 5% BW EPD's. The Star dam is from a cow family that started decades ago, and we've retained a number of Star females. They are sound, tremendous mothers. Her dam has a daughter in production, and two sons sold to long time customers.
- Top % EPD's: MK 20.
- 2359: VGW 10 generation heifer.

**WESTPHAL 106** **VGW MB-STAR 2332** **COW**

Reg: 4766937 • Tat: VGW 2332  
Clvd: 02-07-2023 • 100% 1A  
3SCC DOMAIN A163

**BLL A163 MINDBENDER 21H**  
4348045 BLL MS SUN KING 2F

5L BOURNE 117-48A

**VGW BO-STAR 1710**  
3764641 VGW PAL-STAR 1596

BW	DAM AGE	205 ADJ WT	DAM MPPA
78	6	637	102

EPDs	
ProS	90
HB	59
GM	32
CED	6
BW	0.5
WW	77
YW	119
MK	31
ME	4
HPG	15
CEM	1
ST	18

- A feminine styled, thick prospect, 2332 has deep sides and eye-appealing pattern. She's bred to be a power cow down the road. This is the kind we talk about when we determine our keep heifers and those we put in the sale. With her eye-appealing pattern, and deep sides, she could sure be one that we retained. Her dam has sold 2 sons through our sales.
- Top % EPD's: WW 6, YW 12, MK 10, HPG 8, St 12.
- 2332: VGW 11 generation heifer.



**DAM OF LOT 77**



## VGW AD-DORA 2339

COW

Reg: 4766909 • Tat: VGW 2339  
Clvd: 02-09-2023 • 100% 1A  
STRA GENERAL 882

EPDs	
ProS	59
HB	50
GM	9
CED	7
BW	2.2
WW	99
YW	147
MK	27
ME	10
HPG	15
CEM	5
ST	13

### STRA ADMIRAL 0150

4331071 STRA BANDITO 8132

5L BOURNE FIRE 5353-52C

### VGW BF-DORA 1769

3764309 VGW S163-DORA 1011

BW	DAM AGE	205 ADJ WT	DAM MPPA
88	6	762	102

- A dark red, feminine heifer, 2339 is straight and deep, with overall first-rate dimension. A soggy, broody cow prospect, she is the 12th generation of maternal proficiency. Weaned at 762 Adj WW, 116 WWR, she will be a tremendous, high volume front pasture female. Her first calf will be exciting to see. Her dam has daughters in herd, and 2339 is one of the top we are selling.
- Top % EPD's: WW 1, YW 1, ADG 5, HPB 5, CW 14.
- 2339: VGW 12 generation heifer.



## VGW EX-STAR 2358

COW

Reg: 4766953 • Tat: VGW 2358  
Clvd: 02-18-2023 • 100% 1A  
BECKTON ACCENT D365 L3

EPDs	
ProS	83
HB	53
GM	30
CED	14
BW	-2.5
WW	71
YW	112
MK	32
ME	10
HPG	13
CEM	8
ST	15

### HXC EXCEED 0004H

4360353 HXC 608D

LJC ICEMAN 411D

### VGW IM-STAR 1856

3973474 VGW 396V-STAR 1082

BW	DAM AGE	205 ADJ WT	DAM MPPA
66	5	599	98

- Step into the heifer pens and take a look at 2358. This Star family female is bred to be a top producing, good milking mother. She started at a light 66 BW and has refined capacity on a correct sound structure. We've retained daughters from her mother and sold one heifer to a longtime customer.
- Top % EPD's: WW 16, MK 7.
- 2358: VGW 11 generation heifer.



## VGW GOV-DORY 2379

COW

Reg: 4767037 • Tat: VGW 2379  
Clvd: 03-03-2023 • 100% 1A  
3SCC DOMAIN A163

EPDs	
ProS	88
HB	24
GM	64
CED	12
BW	1.9
WW	71
YW	116
MK	26
ME	6
HPG	13
CEM	5
ST	11

### VGW GOVERNOR 935

4142602 VGW FOR-CHRSS 1746

3SCC DOMAIN A163

### VGW DO-DORA 1909

4142550 VGW CI-DORY 1707

BW	DAM AGE	205 ADJ WT	DAM MPPA
82	4	583	99

- Here's one of the extra deep bodied, deep flanked females that's sure to grow into a top producing brood cow. She's deep through the rib, with splendid muscle shape and wide hip. Great cow herds can be built with females like 2379. Her dam has 8 category top 20% EPD's.
- Top % EPD's: GM 8, WW 13, YW 11, ADG 12, CW 2, REA 4.
- 2379: VGW 12 generation heifer.



## VGW LE-STAR 2380

COW

Reg: 4767147 • Tat: VGW 2380  
Clvd: 03-03-2023 • 100% 1A  
5L LEADING EDGE 15383-117C

EPDs	
ProS	136
HB	59
GM	76
CED	11
BW	-0.4
WW	66
YW	110
MK	29
ME	5
HPG	13
CEM	5
ST	16

### 1DRA LEADING EDGE 1004

4431239 1DRA HANNAH 927

VGW BUMPER CROP 510

### VGW BC-STAR 2089

4272603 VGW TH-STAR 1604

BW	DAM AGE	205 ADJ WT	DAM MPPA
71	3	612	95

- Very efficient pattern and look, this 13th generation Star prospect will develop into a moderate sized, productive cow. Andras breeding on both sides of her 2089 dam. 2380 has top %'s: 4 ProS, 3 GM. Her sire has top 25% EPD's in 12 categories.
- Top % EPD's: ProS 4, GM 3, ADG 20, MK 20, Marb 6, CW 12, Fat 14.
- 2380: VGW 13 generation heifer.



## VGW EX-STAR 2356

COW

Reg: 4766793 • Tat: VGW 2356  
Clvd: 02-17-2023 • 100% 1A  
BECKTON ACCENT D365 L3

EPDs	
ProS	59
HB	41
GM	18
CED	11
BW	-1.2
WW	69
YW	107
MK	31
ME	12
HPG	10
CEM	6
ST	16

### HXC EXCEED 0004H

4360353 HXC 608D

VGW BRAVO 955

### VGW VO-STAR 1110

1444926 VGW 5004-STAR 0971

BW	DAM AGE	205 ADJ WT	DAM MPPA
73	12	569	97

- With ample rib and dimension, here's a broad hiped, broody, high-volume prospect. Her Star family 12-year-old dam has produced 11 progeny including retained daughters, and a handful of sons and daughters sold in prior sales. A real productive, long-lived cow family member.
- Top % EPD's: WW 20, MK 12, YG 20.
- 2356: VGW 9 generation heifer.



## VGW AD-CHRSS 2349

COW

Reg: 4766919 • Tat: VGW 2349  
Clvd: 02-11-2023 • 100% 1A  
STRA GENERAL 882

EPDs	
ProS	28
HB	47
GM	-18
CED	11
BW	-0.9
WW	82
YW	115
MK	24
ME	7
HPG	16
CEM	7
ST	11

### STRA ADMIRAL 0150

4331071 STRA BANDITO 8132

RED U-2 FOREIGNER 413B

### VGW FOR-CHRSS 1746

3764441 VGW U199-CHRSS 1274

BW	DAM AGE	205 ADJ WT	DAM MPPA
80	6	667	101

- With a deep thick quarter, you'll note the great shape and depth in this Admiral-Chrss heifer. This exceptional prospect is ultra-complete, correct, and full of eye appeal. Junior's – here's a great possibility for a show heifer. With her ultra-deep rib, she'll be a future high producer, and her first calf will be a keeper.
- Top % EPD's: WW 2, YW 12, HPG 4, YG 19, FAT 11.
- 2349: VGW 12 generation heifer.



WESTPHAL  
**114**

**VGW ED-CHRSS 2366**

COW

Reg: 4766889 • Tat: VGW 2366  
Clvd: 02-22-2023 • 100% 1A  
5L GAME ON 703-50C

EPDs	
ProS	78
HB	31
GM	47
CED	12
BW	-2.6
WW	71
YW	114
MK	30
ME	-1
HPG	11
CEM	5
ST	11

VGW EDITOR 702

3764711

5L SUNBUSRT 233-3355

ANDRAS THUNDER A092

VGW TH-CHRSS 1608

3554179

VGW 905-CHRSS 11110

BW	DAM AGE	205 ADJ WT	DAM MPPA
81	7	605	99

- This Chrss prospect is a great example of what Editor's daughters look like. She's feminine and thick throughout; bred to be a high maternal producer. The pens will have a number of great heifers' sale day. Look for 2366 and note her tremendous dimension.
- Top % EPD's: WW 16, YW 18, YG 8, REA 11, FAT 6.
- 2366: VGW 10 generation heifer.



**LOT 114 - VGW ED-CHRSS 2366**

WESTPHAL  
**115**

**VGW CL-CHRSS 2399**

COW

Reg: 4766951 • Tat: VGW 2399  
Clvd: 03-22-2023 • 100% 1A  
RED U2 GENESIS 103G

EPDs	
ProS	64
HB	47
GM	17
CED	13
BW	-1
WW	59
YW	88
MK	26
ME	4
HPG	10
CEM	6
ST	15

RED TER-RON GW CLEVELAND 25J

4637765

RED TER-RON DIAMOND MIST 98G

JACOBSON MOUTAINEER 5076

VGW MT-CHRSS 1859

3973428

VGW U199-CHRSS 1274

BW	DAM AGE	205 ADJ WT	DAM MPPA
82	5	554	97

- 2399 is a stylish Chrss heifer with a straight, level top and an angular look. She's a younger heifer that's really come along since weaning. Her dam has top EPD's of WW 7, YW 10, ADG 17, Fat 13, and has sold a son and a daughter in past sales.
- 2399: VGW 12 generation heifer.

WESTPHAL  
**117**

**VGW LE-INDIGO 2373**

COW

Reg: 4766823 • Tat: VGW 2373  
Clvd: 02-26-2023 • 100% 1A  
5L LEADING EDGE 15383-117C

EPDs	
ProS	102
HB	64
GM	38
CED	10
BW	-0.2
WW	67
YW	106
MK	36
ME	9
HPG	14
CEM	6
ST	17

1DRA LEADING EDGE 1004

4431239

1DRA HANNAH 927

LSF JOURNEY 1169Y

VGW JOUR-INDIGO 13129

1689442

VGW 554T-INDIGO 1008

BW	DAM AGE	205 ADJ WT	DAM MPPA
78	10	588	103

- So long and deep, mark your catalog on this standout, large ribbed heifer. 2373 will make the top cut of high quality, performance-bred replacement heifers. Down the road, you'll love having this cow in your program. Her 10-year-old dam has top 1% MK EPD.
- Top % EPD's: MK 1, HPG 10.
- 2373: VGW 7 generation heifer.

WESTPHAL  
**116**

**VGW FR-INDIGO 2302**

COW

Reg: 4767191 • Tat: VGW 2302  
Clvd: 01-22-2023 • 100% 1A  
HXC PATRIOT 7796E

EPDs	
ProS	125
HB	58
GM	67
CED	16
BW	-3.1
WW	78
YW	127
MK	31
ME	7
HPG	14
CEM	9
ST	14

RHRA FROSTY 5G

4156644

RHRA MARTHA 302A 602D

VGW LOTTO 722

VGW LOT-INDIGO 2114

4428385

VGW JUB-INDIGO 1393

BW	DAM AGE	205 ADJ WT	DAM MPPA
63	2	668	100

- An amazing 12 top EPD category Frosty-Indigo daughter. Be sure to find 2302 on sale day. She's remarkably deep sided with tremendous brood cow potential. Her first calf heifer dam developed this mid-sized prospect with plenty of capacity and volume.
- Top % EPD's: ProS 10, GM 8, CED 15, WW 5, YW 5, ADG 7, MK 11, HPG 13, CEM 20, Marb 11, YG 8, REA 6.
- 2302: VGW 8 generation heifer, out of a first calf heifer.



**LOT 116 - VGW FR-INDIGO 2302**



**VGW RZ-INDIGO 2392**

COW

Reg: 4767073 • Tat: VGW 2392  
Clvd: 03-14-2023 • 100% 1A  
PIE SENECA 7168

EPDs	
ProS	33
HB	45
GM	-13
CED	9
BW	0
WW	66
YW	104
MK	28
ME	10
HPG	12
CEM	6
ST	15

**TJS RAZMATAZ G001**

4222360 TJS PRIDE Y176

RED U-2 RECKONING 294C

**VGW RE-INDIGO 1964**

4142874 VGW MEG-INDIGO 1685

BW	DAM AGE	205 ADJ WT	DAM MPPA
84	4	626	100

- This Raz-Indigo cross gives us a heifer you can appreciate from every angle. She's a moderate sized prospect with the maternal look of this classic cow line. Moderate and nicely balanced, she has great dimension and ideal conformation. She will make a very productive mother cow.
- 2392: VGW 8 generation heifer.



**VGW JUD-FIREFLY 2370**

COW

Reg: 4767259 • Tat: VGW 2370  
Clvd: 02-24-2023 • 100% 1A  
KCC EAGER 525-715

EPDs	
ProS	122
HB	80
GM	42
CED	18
BW	-1.1
WW	78
YW	128
MK	30
ME	7
HPG	13
CEM	11
ST	17

**JKW 001 JUDGE**

4289259 JKW 1804 BRIDGET

VGW SHOWDOWN 806

**VGW SD-FIREFLY 2148**

4428689 VGW CIN-FIREFLY 1820

BW	DAM AGE	205 ADJ WT	DAM MPPA
60	2	618	98

- This Judge-Firefly female has an amazing set of top % EPD's. She is long and feminine, full of rib and has a strong topline. A first calf heifer, 2148 did a tremendous job, with 10 top % EPD's nearly matching those of her daughter.
- Top % EPD's: ProS 11, HB 7, CED 4, WW 5, YW 5, ADG 7, MK 15, HPG 17, CEM 3, YG 12, REA 9.
- 2370: VGW 9 generation heifer, out of a first calf heifer.



**VGW CL-INDIGO 2390**

COW

Reg: 4767125 • Tat: VGW 2390  
Clvd: 03-10-2023 • 100% 1A  
RED U2 GENESIS 103G

EPDs	
ProS	132
HB	82
GM	50
CED	12
BW	-0.6
WW	63
YW	105
MK	29
ME	2
HPG	9
CEM	7
ST	20

**RED TER-RON GW CLEVELAND 25J**

4637765 RED TER-RON DIAMOND MIST 98G

CBR FINAL ANSWER 1174-831

**VGW FA-INDIGO 2085**

4272519 VGW A448-INDIGO 1529

BW	DAM AGE	205 ADJ WT	DAM MPPA
78	3	600	98

- Cleveland 25J sired a set of daughters we appreciate for their good attitudes, feminine style, and maternal significance. Count on a highly productive female here; her calves will add pounds on feeder calf loads, and the daughters will make strong replacement females.
- Top % EPD's: ProS 6, HB 6, MK 20, ST 2.
- 2390: VGW 8 generation heifer.



**VGW EX-FIREFLY 2364**

COW

Reg: 4767139 • Tat: VGW 2364  
Clvd: 02-22-2023 • 100% 1A  
BECKTON ACCENT D365 L3

EPDs	
ProS	111
HB	62
GM	49
CED	14
BW	-1.5
WW	64
YW	108
MK	31
ME	7
HPG	13
CEM	7
ST	16

**HXC EXCEED 0004H**

4360353 HXC 608D

LASO FOUNDATION D168F

**VGW FO-FIREFLY 2016**

4272591 VGW MER-FIREFLY 1684

BW	DAM AGE	205 ADJ WT	DAM MPPA
68	3	583	94

- A feminine Firefly heifer, she is a fancy prospect with a 68 BW, and a moderate frame. She's angular in the front with long sides extending into a strong hip and quarter. Her attractive Firefly 2016 dam has ProS 16, GM 4, ADG 15, HPG 9, Marb 3 and CW 18.
- Top % EPD's: ProS 19, ADG 18, MK 10, Marb 20.
- 2364: VGW 10 generation heifer.



**VGW LOG-FIREFLY 2325**

COW

Reg: 4766907 • Tat: VGW 2325  
Clvd: 02-05-2023 • 100% 1A  
VGW LOTTO 722

EPDs	
ProS	47
HB	30
GM	17
CED	10
BW	-1.4
WW	74
YW	119
MK	31
ME	13
HPG	14
CEM	4
ST	13

**VGW LOGIC 121**

4428707 VGW 446-DORA 1945

JACOBSON MOUTAINEER 5076

**VGW MT-FIREFLY 1760**

3764307 VGW S163-FIREFLY 1014

BW	DAM AGE	205 ADJ WT	DAM MPPA
79	6	673	101

- A top prospect, this Firefly cow family heifer has a solid hip, stunning depth and profile, and a feminine front end. Members of the Firefly family are attractive, feminine, and angular with strong quarter, and milk production you can count on. Add a stout topline, and we give you this fancy prospect.
- Top % EPD's: WW 8, YW 8, ADG 12, MK 12, HPG 15.
- 2325: VGW 8 generation heifer.



**LOT 120 - VGW LOG-FIREFLY 2325**



**VGW CL-HAZY 2337**

COW

Reg: 4766883 • Tat: VGW 2337  
Clvd: 02-09-2023 • 100% 1A  
RED U2 GENESIS 103G

**RED TER-RON GW CLEVELAND 25J**

4637765 RED TER-RON DIAMOND MIST 98G

VGW MEGATRON 141

**VGW MEG-HAZY 1691**

3554110 VGW DD-HAZY 1328

BW	DAM AGE	205 ADJ WT	DAM MPPA
83	7	608	98

EPDs	
ProS	76
HB	77
GM	-1
CED	10
BW	-0.3
WW	58
YW	84
MK	29
ME	0
HPG	11
CEM	6
ST	19

- Here's a feminine Hazy-Cleveland heifer that you can give high marks to in every category. She's long and broad, with eye-appeal, deep rib and expressive lower quarter. 2337 blends an attractive smooth straight top with stout hip and deep flank. The Hazy cows are females extraordinaire. Her dam has daughters in our herd and purchased by juniors and longtime customers.
- Top % EPD's: HB 10, ST 6.
- 2337: VGW 8 generation heifer.



**VGW CL-PINETA 2375**

COW

Reg: 4766945 • Tat: VGW 2375  
Clvd: 02-26-2023 • 100% 1A  
RED U2 GENESIS 103G

**RED TER-RON GW CLEVELAND 25J**

4637765 RED TER-RON DIAMOND MIST 98G

BIEBER GLADIATOR C386

**VGW GD-PINETA 1702**

3764715 VF ANN C351-T037

BW	DAM AGE	205 ADJ WT	DAM MPPA
88	6	684	101

EPDs	
ProS	61
HB	42
GM	19
CED	10
BW	2.2
WW	69
YW	112
MK	28
ME	3
HPG	9
CEM	4
ST	15

- A stunning Pineta-Cleveland heifer proves the adage that we sure sell some of our best. She's a member of a newer cow family and she boasts ample rib, back and hip. 2375 has a genetically diverse pedigree and is bred to bring in a big calf every year.
- Top % EPD's: WW 17, YW 16, ADG 17.
- 2375: VGW 2 generation heifer.



**VGW LE-HAZY 2385**

COW

Reg: 4767123 • Tat: VGW 2385  
Clvd: 03-06-2023 • 100% 1A  
5L LEADING EDGE 15383-117C

**1DRA LEADING EDGE 1004**

4431239 1DRA HANNAH 927

3SCC DETAIL E87

**VGW DET-HAZY 2032**

4272517 VGW Z416-HAZY 1550

BW	DAM AGE	205 ADJ WT	DAM MPPA
70	3	591	98

EPDs	
ProS	98
HB	64
GM	34
CED	13
BW	-2.4
WW	53
YW	86
MK	33
ME	9
HPG	14
CEM	6
ST	18

- With a light 70 BW, this Hazy heifer is a compact sized prospect with a maternal look, and the bloodlines in place to be a top production female. The Hazy cows are terrific mothers with excellent milk numbers, and it's readily evident when you see them in the pasture.
- Top % EPD's: MK 5, HPG 12, ST 12.
- 2385: VGW 9 generation heifer.



**VGW CL-CRYSTAL 2334**

COW

Reg: 4767183 • Tat: VGW 2334  
Clvd: 02-07-2023 • 100% 1A  
RED U2 GENESIS 103G

**RED TER-RON GW CLEVELAND 25J**

4637765 RED TER-RON DIAMOND MIST 98G

LSF SRR STATESMAN 7024E

**LSF SRR CRYSTAL H0359 H0359**

4279991 LSF SRR CRYSTAL C5038

BW	DAM AGE	205 ADJ WT	DAM MPPA
72	3	631	98

EPDs	
ProS	75
HB	49
GM	26
CED	13
BW	-2.1
WW	66
YW	98
MK	28
ME	2
HPG	10
CEM	8
ST	14

- 2334 is from an outcross cow line in our program. She's very feminine fronted and will mature to a moderate size. She has the sturdy look of her Cleveland sire, and her dam has top EPD's: CED & BW 25, WW 10, HPG 7, YW & CEM 21, Marb 6, YG & Fat 12.
- 2334: VGW 1 generation heifer.



**VGW RZ-QUEEN 2376**

COW

Reg: 4767097 • Tat: VGW 2376  
Clvd: 02-27-2023 • 100% 1A  
PIE SENECA 7168

**TJS RAZMATAZ G001**

4222360 TJS PRIDE Y176

LELAND DICTATE 8540

**VGW DIC-QUEEN 2088**

4272403 VGW R667-QUEEN 1268

BW	DAM AGE	205 ADJ WT	DAM MPPA
77	3	686	104

EPDs	
ProS	47
HB	0
GM	48
CED	5
BW	2.3
WW	84
YW	144
MK	31
ME	19
HPG	13
CEM	3
ST	10

- Top 1% in WW, YW and ADG, this Raz-Queen heifer is wide backed, with the goods to make a just-right-sized production cow. Raz daughters have beautiful udders, and our first Raz females are feminine and milky. 2376 has the broodiness and bloodlines to raise big calves.
- Top % EPD's: WW 1, YW 1, ADG 1, MK 11, CW 3.
- 2376: VGW 8 generation heifer.



**VGW RIP-TABITHA 2398**

COW

Reg: 4766993 • Tat: VGW 2398  
Clvd: 03-23-2023 • 100% 1A  
PIE QUARTERBACK 789

**CHC RIP 2125**

4293505 9 MILE CHINOOK 6309

VGW BUMPER CROP 510

**VGW BC-TABITHA 1805**

3973748 VGW PAL-TABITHA 1653

BW	DAM AGE	205 ADJ WT	DAM MPPA
67	5	590	98

EPDs	
ProS	104
HB	51
GM	53
CED	17
BW	-4.5
WW	61
YW	98
MK	25
ME	3
HPG	11
CEM	9
ST	14

- This modest sized Tabitha-Rip heifer has Top GM, CED, BW and CEM, following in the EPD track of her sire's top 3% CED & BW, along with top %'s in ProS, GM, ADG, CEM and Marb. Her Tabitha cow family is known for production plus. 2398 offers a true maternal opportunity.
- Top % EPD's: GM 15, CED 7, BW 10, CEM 11, Marb 15.
- 2398: VGW 10 generation heifer.



**VGW ED-MERCEDES 2350 COW**

Reg: 4766939 • Tat: VGW 2350  
Clvd: 02-12-2023 • 100% 1A  
5L GAME ON 703-50C

EPDs	
ProS	127
HB	79
GM	48
CED	16
BW	-5.4
WW	53
YW	90
MK	29
ME	-4
HPG	14
CEM	8
ST	17

**VGW EDITOR 702**

3764711 5L SUNBUSRT 233-3355

5L BOURNE 117-48A

**VGW BO-MERCEDES 1713**

3764655 VGW 141-MERCEDES 1573

BW	DAM AGE	205 ADJ WT	DAM MPPA
69	6	590	97

- 2350's a wide-bodied Mercedes heifer with deep rib and thickness, bone, femininity, and maternal strength. She and Editor 702 have top CED and BW %'s. Standing the test of time, 13 generations back, the foundation cow holds her own with top 3% HB, 40 years later.
- Top % EPD's: ProS 9, HB 9, CED 11, BW 4, ME 20, HPG 10, Marb 16.
- 2350: VGW 13 generation heifer.



**VGW CE-MARTHA 2368 COW**

Reg: 4767305 • Tat: VGW 2368  
Clvd: 02-23-2023 • 100% 1A  
LJC ICEMAN 411D

EPDs	
ProS	91
HB	46
GM	45
CED	16
BW	-3.3
WW	73
YW	122
MK	30
ME	12
HPG	13
CEM	10
ST	13

**VGW CUTTING EDGE 807**

3973768 VGW FUS-STAR 1601

LASO FOUNDATION D168F

**VGW FO-MARTHA 2050**

4272549 5L MARTHA 1952-5065

BW	DAM AGE	205 ADJ WT	DAM MPPA
50	3	596	101

- This smaller female is a twin to 2367, from a relatively new cow family in our herd. With a light 50 BW, she has developed into a classy, moderate sized heifer with tremendous performance numbers. Keep the full sisters together and watch their maternal proficiency develop as they mature.
- Top % EPD's: CED 12, WW 12, YW 10, ADG 10, MK 17, CEM 10.
- 2368: VGW 2 generation heifer.



**VGW CH-COLLEN 2306 COW**

Reg: 4766859 • Tat: VGW 2306  
Clvd: 01-27-2023 • 100% 1A  
SPUR FRANCHISE OF GARTON

EPDs	
ProS	125
HB	79
GM	46
CED	14
BW	-4.4
WW	55
YW	91
MK	27
ME	3
HPG	9
CEM	7
ST	21

**HXC CHARTER 6610D**

3547655 HXC 111Y

5L HOT SHOT 2370-186A

**VGW HS-COLLEN 1530**

3476080 LAUBACH COLLEN EN 0094

BW	DAM AGE	205 ADJ WT	DAM MPPA
57	8	535	95

- Collen 2306 is a compact sized female with balance, eye-appeal, and maternal style. Bred for all-around production value, 2306 has top %'s ProS 11, HB 8, and her Charter sire is top 1% in ProS and GM. Here's bred in maternal quality and you'll find it in her daughters as well.
- Top % EPD's: ProS 11, HB 8, BW 13, ST 1, Marb 19.
- 2306: VGW 2 generation heifer.



**VGW CE-MARTHA 2367 COW**

Reg: 4767131 • Tat: VGW 2367  
Clvd: 02-23-2023 • 100% 1A  
LJC ICEMAN 411D

EPDs	
ProS	70
HB	20
GM	50
CED	15
BW	-3.5
WW	78
YW	128
MK	30
ME	12
HPG	13
CEM	9
ST	9

**VGW CUTTING EDGE 807**

3973768 VGW FUS-STAR 1601

LASO FOUNDATION D168F

**VGW FO-MARTHA 2050**

4272549 5L MARTHA 1952-5065

BW	DAM AGE	205 ADJ WT	DAM MPPA
55	3	605	101

- Much like her twin, Lot 132, this heifer has top performance and milk EPD values, and the two are very similar in size and style. They're from the maternal, good milking Martha cow, and our correct, balanced Cutting Edge sire, who's top 2% in CED.
- Top % EPD's: WW 5, YW 5, ADG 8, MK 17, Marb 2.
- 2367: VGW 2 generation heifer.



**VGW CH-ANK 2318 COW**

Reg: 4766797 • Tat: VGW 2318  
Clvd: 01-31-2023 • 100% 1A  
SPUR FRANCHISE OF GARTON

EPDs	
ProS	133
HB	90
GM	43
CED	13
BW	-3
WW	57
YW	93
MK	27
ME	0
HPG	12
CEM	7
ST	21

**HXC CHARTER 6610D**

3547655 HXC 111Y

5L DOUBLE DESIGN 1177-227W

**VGW DD-ANK 1239**

1541755 VGW CAL-ANK 0464

BW	DAM AGE	205 ADJ WT	DAM MPPA
66	11	497	97

- 2318 is a DD-Ank daughter out of the Charter 6610D sire. Be sure to look at the potential for cow power here. She and her sire have top ProS numbers, she has top 3% HB and her sire is top 1% GM. A powerful mix of maternal, stay, and carcass quality.
- Top % EPD's: ProS 6, HB 3, St 2, Marb 16, Fat 3.
- 2318: VGW 6 generation heifer.



**VGW CH-DOLL 2301 COW**

Reg: 4767227 • Tat: VGW 2301  
Clvd: 01-14-2023 • 100% 1A  
SPUR FRANCHISE OF GARTON

EPDs	
ProS	140
HB	80
GM	61
CED	18
BW	-5.1
WW	57
YW	94
MK	28
ME	1
HPG	11
CEM	8
ST	19

**HXC CHARTER 6610D**

3547655 HXC 111Y

VGW EDITOR 702

**VGW ED-DOLL 2156**

4428543 VGW FOR-DOLL 1752

BW	DAM AGE	205 ADJ WT	DAM MPPA
52	2	554	94

- Known for impressive EPD's as a yearling, we AI bred a number of females to her sire, Charter 6610D. He has lived up to his billing, and currently has 10 category top 20% EPD's. 2301 is a balanced heifer to add all-around production through her daughters, and carcass and pounds through her sons.
- Top % EPD's: ProS 4, HB 8, GM 18, CED 5, BW 5, St 5, Marb 5.
- 2301: VGW 8 generation heifer.

WESTPHAL  
**135**

## VGW EX-RED P2312

COW

Reg: 4767045 • Tat: VGW P2312  
Clvd: 02-17-2023 • 99.9% 1B  
BECKTON ACCENT D365 L3

HXC EXCEED 0004H

4360353

HXC 608D

3SCC DOMAIN A163

VGW DO-RED P1902

4142598

VGW MT-RED P1703

BW	DAM AGE	205 ADJ WT	DAM MPPA
69	4	621	100

EPDs	
ProS	78
HB	65
GM	13
CED	15
BW	-0.9
WW	66
YW	105
MK	30
ME	6
HPG	12
CEM	6
ST	18



**LOT 135 - VGW EX-RED P2312**

- Here's an impressive feminine heifer that can stand out in any pasture. We like the Exceed 004H calves. This Do-Red dam has top %'s CED 15, St 17 and ProS 23, and P2312 leaves you no guesswork in an attractive fault-free package. Her daughters will be herd builders, and sons will push down the scales hard.
- Top % EPD's: HB 19, MK 15, ST 10.
- P2312: VGW 11 generation heifer.

WESTPHAL  
**136**

## VGW MB-RED P2303

COW

Reg: 4766915 • Tat: VGW P2303  
Clvd: 02-06-2023 • 99.9% 1B  
3SCC DOMAIN A163

BLL A163 MINDBENDER 21H

4348045

BLL MS SUN KING 2F

RED U-2 FOREIGNER 413B

VGW FOR-RED P1710

3764361

VGW RTR-RED P1116

BW	DAM AGE	205 ADJ WT	DAM MPPA
90	6	721	102

EPDs	
ProS	100
HB	68
GM	32
CED	7
BW	2.5
WW	81
YW	125
MK	30
ME	3
HPG	15
CEM	2
ST	18

- P2303 is an ample sized female with a 721 Adj WW, and an actual WW of 800 lbs. The Mindbender-U-2 Foreigner mating produced a herd-builder heifer that has 8 top % EPD's. She is an easy doing, wide backed highly maternal female with a deep flank and rib.
- Top % EPD's: WW 3, YW 5, ADG 15, MK 16, HPG 9, ST 13, YG 17, REA 16.
- P2303: VGW 9 generation heifer.

WESTPHAL  
**138**

## VGW MB-RED P2309

COW

Reg: 4766895 • Tat: VGW P2309  
Clvd: 02-12-2023 • 99.9% 1B  
3SCC DOMAIN A163

BLL A163 MINDBENDER 21H

4348045

BLL MS SUN KING 2F

JACOBSON ADVANTAGE 3156

VGW ADV-RED P1618

3554221

VGW U199-RED P1302

BW	DAM AGE	205 ADJ WT	DAM MPPA
78	7	569	101

EPDs	
ProS	103
HB	55
GM	48
CED	7
BW	0.5
WW	70
YW	114
MK	30
ME	4
HPG	14
CEM	4
ST	16

- P2309 has tremendous top %'s EPD's, as does her sire and dam. Carcass and performance capability is part of her breeding, and she'll produce heavy calves with marbling and REA merit. She's deep through the flank and quarter.
- Top % EPD's: WW 18, YW 17, ADG 18, HPG 16, Marb 16, YG 7, Fat 3.
- P2309: VGW 10 generation heifer.

WESTPHAL  
**137**

## VGW GOV-RED P2317

COW

Reg: 4767163 • Tat: VGW P2317  
Clvd: 03-17-2023 • 99.9% 1B  
3SCC DOMAIN A163

VGW GOVERNOR 935

4142602

VGW FOR-CHRSS 1746

KCC EAGER 525-715

VGW EAG-RED P2001

4272817

VGW IM-RED P1810

BW	DAM AGE	205 ADJ WT	DAM MPPA
83	3	651	101

EPDs	
ProS	84
HB	58
GM	26
CED	11
BW	0.8
WW	74
YW	115
MK	28
ME	7
HPG	14
CEM	5
ST	16

- Here's a Red cow family prospect out of our young sire, Governor 935. He is giving us easy fleshing, just right sized daughters with strong maternal qualities. P2317 has a beautiful phenotype with volume, deep rib and hip.
- Top % EPD's: WW 9, YW 16, HPG 14.
- P2317: VGW 10 generation heifer.

WESTPHAL  
**139**

## VGW MB-RED P2305

COW

Reg: 4766935 • Tat: VGW P2305  
Clvd: 02-08-2023 • 99.9% 1B  
3SCC DOMAIN A163

BLL A163 MINDBENDER 21H

4348045

BLL MS SUN KING 2F

5L BOURNE 117-48A

VGW BOURNE-RED P1702

3764613

VGW FUSION-RED P1502

BW	DAM AGE	205 ADJ WT	DAM MPPA
79	6	722	100

EPDs	
ProS	98
HB	52
GM	45
CED	8
BW	0.5
WW	83
YW	131
MK	30
ME	8
HPG	15
CEM	4
ST	15

- This heifer is deep, big ribbed and thick end to end. The Red cows were our original family so these 1B heifers are 9-13 generations deep in our program. P2305 has 722 Adj WW, 110 WWR. This 3SCC Domain-Red cross is performance packed with Top 20% EPD's - 6 categories; Sire - 8 cat's; Dam - 3 cat's.
- Top % EPD's: WW 2, YW 5, ADG 13, MK 14, HPG 5, Marb 14.
- P2305: VGW 10 generation heifer.



## VGW ED-RED P2314

COW

Reg: 4767029 • Tat: VGW P2314  
Clvd: 02-21-2023 • 99.9% 1B  
5L GAME ON 703-50C

EPDs	
ProS	138
HB	84
GM	54
CED	20
BW	-5.6
WW	49
YW	81
MK	30
ME	1
HPG	13
CEM	10
ST	19

### VGW EDITOR 702

3764711

5L SUNBUSRT 233-3355

3SCC NAVIGATOR A448

### VGW 448-RED P1910

4142476

VGW SS-RED P1311

BW	DAM AGE	205 ADJ WT	DAM MPPA
66	4	599	99

- You'll like what you see when you get in the pen with this Editor-Navigator heifer. She has top percentile EPD's in ProS, HB, and GM – a tough combination to achieve. Editor is known for calving ease traits, siring exceptional females, and lighter BW calves that come easy.
- Top % EPD's: ProS 3, HB 5, GM 20, CED 1, BW 4, MK 19, CEM 6, ST 5, Marb 14.
- P2314: VGW 9 generation heifer.



## VGW CL-RED P2318

COW

Reg: 4767161 • Tat: VGW P2318  
Clvd: 03-21-2023 • 99.9% 1B  
RED U2 GENESIS 103G

EPDs	
ProS	44
HB	52
GM	-9
CED	13
BW	-1.2
WW	62
YW	100
MK	30
ME	3
HPG	9
CEM	8
ST	15

### RED TER-RON GW CLEVELAND 25J

4637765

RED TER-RON DIAMOND MIST 98G

KCC EAGER 525-715

### VGW EAG-RED P2004

4272803

VGW BC-RED P1811

BW	DAM AGE	205 ADJ WT	DAM MPPA
78	3	613	98

- This stylish, eye-appealing Cleveland heifer has an Eager-Red dam. She's closely related to P2316, with the same production values in their mothers' histories. P2318 is a generous ribbed heifer with bred in stay-ability and a great cow family. She can utilize your toughest pasture conditions, and wean a big calf.
- Top % EPD's: MK 16.
- P2318: VGW 10 generation heifer.



## VGW RZ-RED P2315

COW

Reg: 4767081 • Tat: VGW P2315  
Clvd: 02-27-2023 • 99.8% 1B  
PIE SENECA 7168

EPDs	
ProS	12
HB	7
GM	5
CED	7
BW	3
WW	78
YW	133
MK	27
ME	13
HPG	11
CEM	3
ST	11

### TJS RAZMATAZ G001

4222360

TJS PRIDE Y176

JACOBSON MOUTAINEER 5076

### VGW MT-RED P1921

4142910

VGW THU-RED P1606

BW	DAM AGE	205 ADJ WT	DAM MPPA
88	4	639	98

- Razmataz daughters have very good milk production and flawless udders. Take a look at P2315 on sale day, study her phenotype, depth of rib and length of side on a moderate sized female. Strong performance in her lines will put pounds on at weaning.
- Top % EPD's: WW 4, YW 3, ADG 3.
- P2315: VGW 8 generation heifer.



## VGW CL-RED P2301

COW

Reg: 4767299 • Tat: VGW P2301  
Clvd: 02-04-2023 • 99.9% 1B  
RED U2 GENESIS 103G

EPDs	
ProS	66
HB	34
GM	32
CED	14
BW	-2.7
WW	54
YW	90
MK	23
ME	1
HPG	11
CEM	7
ST	12

### RED TER-RON GW CLEVELAND 25J

4637765

RED TER-RON DIAMOND MIST 98G

LJC ICEMAN 411D

### VGW IM-RED P1818

3973726

VGW 819 RED P0808

BW	DAM AGE	205 ADJ WT	DAM MPPA
66	5	538	92

- There's little left to guesswork here, and this Iceman-Red heifer, with a light 66 BW, is a moderate, functional, attractive prospect. She has a fancy, extra feminine profile and is full of thickness and balance. The Red family cows are highly maternal, easy doing mothers, hence their 45+ year history in our herd.
- Top % EPD's: Fat 19.
- P2301: VGW 11 generation heifer.



## VGW CL-REDP2316

COW

Reg: 4767157 • Tat: VGW P2316  
Clvd: 03-16-2023 • 99.9% 1B  
RED U2 GENESIS 103G

EPDs	
ProS	64
HB	95
GM	-31
CED	13
BW	-1.4
WW	59
YW	86
MK	30
ME	3
HPG	11
CEM	8
ST	22

### RED TER-RON GW CLEVELAND 25J

4637765

RED TER-RON DIAMOND MIST 98G

KCC EAGER 525-715

### VGW EAG-RED P2007

4272791

VGW BF-RED P1816

BW	DAM AGE	205 ADJ WT	DAM MPPA
76	3	615	99

- Twelve generations of a cow family speaks to great maternal strength and longevity. This Cleveland daughter is out of a young Eager-Red dam with an ideal phenotype and a productive look. The heifer has outstanding capacity, and she and her dam have top HB EPD's, as well as stout MK and ST numbers.
- Top % EPD's: HB 2, MK 17, ST 1.
- P2316: VGW 12 generation heifer.





# COMMERCIAL HEIFERS

50 head of commercial heifers. Lots 145-194 from the heart of our commercial replacements sell.

- They are Bangs vaccinated and have had PregGuard 10.
- They will be cycling and ready to breed after the sale.
- They're sired by multiple, registered Westphal Red Angus sires.
- These are commercials, thus can not be registered.
- All commercial heifers have been tested BVD-PI negative.

GROUP	PRICE	LOT #	GROUP	PRICE	LOT #
1	_____	_____	10	_____	_____
2	_____	_____	11	_____	_____
3	_____	_____	12	_____	_____
4	_____	_____	13	_____	_____
5	_____	_____	14	_____	_____
6	_____	_____	15	_____	_____
7	_____	_____	16	_____	_____
8	_____	_____	17	_____	_____
9	_____	_____	18	_____	_____

## REFERENCE SIRES



### VGW AMAZING Reg: 4428721 100% 1A

Sire: BIEBER CLATOMIC C218 (3474996) MGS: JACOBSON MOUTAINEER 5076 (3498602)  
 BW 72/100 WW 733/110 YW 1304/115

	ProS	HB	GM	CED	BW	WW	YW	MILK	ME	HPG	CEM	STAY	MARB	YG	REA
EPD	95	28	66	14	-1.0	92	156	28	19	15	8	10	0.58	0.06	-0.00
Pctl	41%	81%	12%	40%	63%	2%	1%	36%	98%	12%	30%	89%	23%	44%	14%

Living up to his billing and his name, Amazing has done a great job with his first calf crop. He carries an extra wide top and large rib and is as eye appealing as he was in '22 when he was purchased by Gill Red Angus, South Dakota. His stats were impressive, and his first calf heifer dam raised him from 72 BW to 733 Adj WW, WWR 110. We sure like his sons, and his daughters are giving us beautiful calves. Top EPD %'s: GM, WW, YW, ADG, HPG, CW and FAT. Sons sell as Lots 1, 5, 11 and 15-20; and a daughter leads the heifer offering as Lot 103.



### VGW LOGIC 121 Reg: 4428707 100% 1A

Sire: VGW LOTTO 722 (3764733) MGS: BECKTON NEW ERA B446 E2 (1706010)  
 BW 71/98 WW 743/111 YW 1235/109

	ProS	HB	GM	CED	BW	WW	YW	MILK	ME	HPG	CEM	STAY	MARB	YG	REA
EPD	82	52	29	14	-2.8	85	132	36	13	16	8	13	0.66	0.23	0.06
Pctl	57%	47%	62%	36%	33%	4%	7%	2%	89%	8%	39%	66%	15%	96%	95%

Logic has carried his ideal phenotype forward since birth. He's very long sided, with growth and thickness in his calves, and they all have solid quarters and straight top lines. Logic is by VGW Lotto 722 and the highly productive Firefly cow family is represented on both sides. He is proving himself with exciting sons, and prolific daughters. Top EPD %'s: WW, YW, ADG, MK, HPG, and Marb. BW 71, Adj WW 743. Co-owned with Ole Farms in Alberta. Sons sell as Lots 8 and 12-14 and a top daughter is Lot 120.



### VGW CUTTING EDGE 807 Reg: 3973768 100% 1A

Sire: LJC ICEMAN 411D (3543821) MGS: ANDRAS FUSION R236 (1506931)  
 BW 67/88 WW 751/111 YW 1269/112 %IMF 4.90/130 BF 0.38/148 REA 13.22/102

	ProS	HB	GM	CED	BW	WW	YW	MILK	ME	HPG	CEM	STAY	MARB	YG	REA
EPD	69	43	25	20	-4.7	82	136	29	16	14	13	11	0.52	0.19	-0.30
Pctl	73%	62%	69%	2%	10%	6%	5%	25%	94%	20%	1%	82%	32%	90%	98%

Cutting Edge has top EPD %'s in CED, BW, WW, YW, ADG, HPG, and CEM. Combine these values with the correctness and balance in his calves; his strong maternal daughters, and stout weaning weights. In addition, we appreciate his calving ease and lighter birthweights. Sons sell as Lots 4 and 24-28. Daughters offered are Lots 132 and 133.



# REFERENCE SIRES



## VGW EDITOR 702 Reg: 3764711 100% 1A

Sire: 5L GAME ON 703-50C (3483647) MGS: BECKTON NEBULA Y360 J4 (1451649)  
BW 67/90 WW 769/108 YW 1269/107 %IMF 6.79/163 BF 0.42/131 REA 12.90/96

	ProS	HB	GM	CED	BW	WW	YW	MILK	ME	HPG	CEM	STAY	MARB	YG	REA
EPD	105	52	53	19	-5.4	56	94	30	-1	10	7	16	0.61	0.14	-0.12
Pctl	28%	48%	24%	4%	5%	71%	64%	17%	24%	72%	50%	34%	20%	76%	89%

702 is a power packed sire with a 108 WWR and 107 YWR. We like his length and depth, and he passes it on to his calves, along with extra pounds at weaning. He's proven himself with great calves every year, and his daughters are very good mother cows. Top % EPD's: CED, BW, MK and Marb. Sons sell as Lots 29-32. Daughters sell as Lots 107, 114, 129 and 140.

## VGW GOVERNOR 935 Reg: 4142602 100% 1A

Sire: 3SCC DOMAIN A163 (1619642) MGS: RED U-2 FOREIGNER 413B (2568102)  
BW 79/106 WW 735/107 YW 1222/108 %IMF 4.08/102 BF 0.27/97 REA 15.17/119

	ProS	HB	GM	CED	BW	WW	YW	MILK	ME	HPG	CEM	STAY	MARB	YG	REA
EPD	78	52	26	14	-1.8	62	98	25	4	14	5	16	0.40	-0.05	0.02
Pctl	62%	47%	68%	33%	50%	51%	57%	55%	52%	17%	79%	40%	53%	11%	12%

Governor 935 is a long sided, thick-made son of 3SCC Domain A163. His daughters are easy fleshing, just right sized, and have strong maternal quality. His Chrss dam has a 101 MPPA. Daughters are Lots 109 and 137.

## JKW 001 JUDGE Reg: 4289259 100% 1A

Sire: KCC EAGER 525-715 (3774571) MGS: RED U-2 RECKONING 294C (2585268)  
BW 72/99 WW 705/105 YW 1178/107

	ProS	HB	GM	CED	BW	WW	YW	MILK	ME	HPG	CEM	STAY	MARB	YG	REA
EPD	113	79	34	17	-3.0	72	110	31	8	13	10	17	0.38	0.07	0.03
Pctl	20%	11%	53%	13%	29%	22%	33%	15%	72%	26%	8%	20%	57%	48%	65%

Judge is a long sided, high producing sire out of KCC Eager 525-715 and Jenni's JKW 1804 Bridget dam, that traces to our Dora cow family and Red U-2 Reckoning 294C. She has an outstanding 105 MPPA. 001 has top EPD %'s in ProS, HB, CED, MK, CEM and ST. Sons sell as Lots 21-23, and a daughter is Lot 121.

## BLL A163 MINDBENDER 21H Reg: 4348045 100% 1A

Sire: 3SCC DOMAIN A163 (1619642) MGS: LARSON SUN KING 016 (1384618)  
BW 88/110 WW 795/113 YW 1333/112 %IMF 5.00/146 BF 0.36/140 REA 13.14/105

	ProS	HB	GM	CED	BW	WW	YW	MILK	ME	HPG	CEM	STAY	MARB	YG	REA
EPD	113	62	52	5	1.8	84	130	32	11	16	1	19	0.82	0.09	0.17
Pctl	20%	31%	26%	99%	94%	5%	8%	11%	83%	8%	98%	12%	5%	58%	41%

We purchased Mindbender from the Beery's Land and Livestock at Vida, MT. His calves are exciting and he has a strong set of sons and daughters selling. He's a very dynamic son of 3SCC Domain A163, and his top performance EPD %'s are in ProS, WW, YW, ADG, MK, HPG, ST, and Marb. His dam is a valuable cow at Beery's, with a female line that's outstanding generations deep. His sons sell as Lots 2-3 and 76-81. Daughters offered are Lots 106, 136, and 138-139.

## HXC CHARTER 6610D Reg: 3547655 100% 1A

Sire: SPUR FRANCHISE OF GARTON (3469042) MGS: BECKTON NEBULA P P707 (979031)  
BW 66/86 WW 679/107 YW 1317/106 %IMF 5.45/126 BF 0.27/93 REA 14.61/103

	ProS	HB	GM	CED	BW	WW	YW	MILK	ME	HPG	CEM	STAY	MARB	YG	REA
EPD	181	77	103	12	-2.6	72	123	32	8	10	7	20	0.96	0.14	0.19
Pctl	1%	12%	1%	56%	36%	22%	14%	11%	70%	74%	57%	4%	2%	77%	38%

6610D was bred in the Hueftle Cattle Co herd in Nebraska. This sire has an outcross pedigree on the sire side, with his cow line being a Beckton Nebula female. Charter had a modest 66 BW, a 107 WWR and 106 YWR. He has top percentile EPD's in ten categories and is deep and thick through the rib and quarter, with clean lines in the front, through his neck, and shoulders. Sons sell as Lots 10 and 58-62; with daughters offered as Lots 130-131, and 134.

## HXC EXCEED 0004H Reg: 4360353 100% 1A

Sire: BECKTON ACCENT D365 L3 (3551215) MGS: SPUR FRANCHISE OF GARTON (3469042)  
BW 79/102 WW 755/128 YW 1414/113 %IMF 2.74/70 BF 0.42/113 REA 16.52/113

	ProS	HB	GM	CED	BW	WW	YW	MILK	ME	HPG	CEM	STAY	MARB	YG	REA
EPD	94	60	34	12	-1.2	71	111	35	9	13	6	17	0.47	0.01	0.32
Pctl	41%	33%	54%	55%	60%	24%	31%	3%	75%	35%	65%	25%	40%	25%	21%

Exceed is a Hueftle Cattle Co bull we purchased in their sale in 2021. His calves are eye-appealing, with plenty of red meat, performance traits, loads of depth, solid pattern and daughters that are feminine and maternal. He was the top weaning bull his year with a tremendous 128 WWR. Sons sell as Lots 82-88, and daughters are Lots 110-111, 122 and 135.







# REFERENCE SIRES



## LASO FOUNDATION D168F Reg: 3932305 100% 1A

Sire: C-BAR CORNERSTONE 105D (3593490) MGS: 5L DEFENDER 560-30Z (1549933)

BW 74/100 WW 749/116 YW 1163/110 %IMF 7.93/138 BF 0.41/156 REA 11.60/98

	ProS	HB	GM	CED	BW	WW	YW	MILK	ME	HPG	CEM	STAY	MARB	YG	REA
EPD	134	53	81	13	-3.1	71	121	29	9	14	6	15	1.05	0.10	0.15
Pctl	8%	46%	4%	44%	28%	24%	16%	29%	76%	21%	60%	45%	1%	59%	45%

D168F had an impressive 749 Adj WW with a 138 IMF ratio as a yearling. We use him on heifers as well as mature cows, and the calves are light to moderate birth weights. From the Lautenschlager program in WA, we've been impressed with his powerhouse sons and fancy daughters with nice patterns. Sons sell as Lots 95-97.



## RED TER-RON GW CLEVELAND 25J Reg: 4637765 100% 1A

Sire: RED U2 GENESIS 103G (4624043) MGS: RED U-2 RENOWN 193C (2585133)

	ProS	HB	GM	CED	BW	WW	YW	MILK	ME	HPG	CEM	STAY	MARB	YG	REA
EPD	49	29	20	13	-0.5	57	88	29	-5	7	8	11	0.23	0.14	-0.05
Pctl	88%	81%	76%	44%	71%	69%	75%	24%	14%	95%	39%	84%	83%	76%	81%

We own the Cleveland 25J bull with Ter-Ron Farms in Alberta. He is hard to find a hole in and has a deep body and strong top. With loads of presence, he started at just 60 BW and curved to an Adj 205 of 731. We used him on cows and heifers. Sons sell as Lots 9 and 33-51; daughters are Lots 115, 119, 123, 126-127 and 142-144.

## RHRA FROSTY 5G Reg: 4156644 100% 1A

Sire: HXC PATRIOT 7796E (3816365) MGS: POKE OLY 2058 4048 (1683590)

BW 70/86 WW 797/107 YW 1374/105

	ProS	HB	GM	CED	BW	WW	YW	MILK	ME	HPG	CEM	STAY	MARB	YG	REA
EPD	127	55	72	18	-4.8	78	122	30	9	11	10	15	0.77	-0.04	0.54
Pctl	10%	42%	8%	7%	9%	10%	15%	20%	76%	63%	10%	50%	8%	12%	7%

Frosty was raised in the Rafter H Ranch herd in Iowa. His dam is Martha 302A 602D who is an elite female in the Rafter H program. She's a granddaughter of Red SSS Oly 554T, a sire that produced a number of great cows for us. The 5G calves are deep bodied with good muscle shape and calving ease. Sons sell as Lots 52-57 and a daughter is offered as Lot 116.



## STRA ADMIRAL 0150 Reg: 4331071 100% 1A

Sire: STRA GENERAL 882 (3965069) MGS: BIEBER DRIVEN C540 (3474416)

BW 78/95 WW 873/117 YW 1436/111 %IMF 2.82/104 BF 0.37/117 REA 14.84/105

	ProS	HB	GM	CED	BW	WW	YW	MILK	ME	HPG	CEM	STAY	MARB	YG	REA
EPD	71	69	2	11	-1.1	97	141	25	15	13	9	16	0.37	0.06	0.16
Pctl	70%	21%	94%	72%	62%	1%	3%	59%	93%	34%	15%	34%	59%	44%	43%

Admiral was bred in the Twedt Red Angus program in North Dakota. He has excellent depth of heel and strong hoof development, and he adds tremendous muscle mass to his sons. He's been used on cows and heifers. He has an exceptional Adj WW 873, WWR 117 with a moderate Act 78 BW. His sons are Lots 6-7, and 63-75. Daughters are Lots 105, 108 and 113.

## TJS RAZMATAZ GOO1 Reg: 4222360 100% 1A

Sire: PIE SENECA 7168 (3838659) MGS: TJS BERRY CHERRY 8801 (1231054)

BW 77/93 WW 646

	ProS	HB	GM	CED	BW	WW	YW	MILK	ME	HPG	CEM	STAY	MARB	YG	REA
EPD	32	15	17	7	2.2	88	146	26	25	14	5	12	0.34	0.17	0.00
Pctl	95%	91%	80%	96%	95%	3%	2%	48%	99%	19%	85%	80%	64%	87%	73%

Razmataz (Raz) came out of the Schick TJS Red Angus program at Lodge Grass. He's a son of PIE Seneca 7168. From a 77 BW he spread to a 780 Act WW, and he's very sound with top EPD %'s in WW, YW, ADG and HPG. He has top performance and carcass character. We co-own him with TJS, and Brickhouse Farm in Missouri. Sons sell as Lots 89-94. Daughters offered are Lots 118, 125 and 141.

## CHC RIP 2125 Reg: 4293505 100% 1A

Sire: PIE QUARTERBACK 789 (3838837) MGS: C-BAR ELDORADO 114Z (1551454)

BW 83 WW 747 YW 1211 %IMF 5.58/106 BF 0.25/107 REA 13.95/102

	ProS	HB	GM	CED	BW	WW	YW	MILK	ME	HPG	CEM	STAY	MARB	YG	REA
EPD	130	60	70	19	-5.9	63	112	26	10	11	10	16	0.75	0.03	0.19
Pctl	9%	35%	9%	3%	4%	48%	28%	45%	78%	52%	9%	31%	9%	30%	60%

Forbes in Washington bred Rip 2125. He had an Adj WW 747, and he has top percentile EPD's in seven categories including ProS and GM. He's moderate sized, with a red meat packed body and his sons have the same pattern. Sons sell as Lots 98-99 and a daughter sells as Lot 128.

## 1DRA LEADING EDGE 1004 Reg: 4431239 100% 1A

Sire: 5L LEADING EDGE 15383-117C (3483291) MGS: COOKSLEY HD 7117 (3812187)

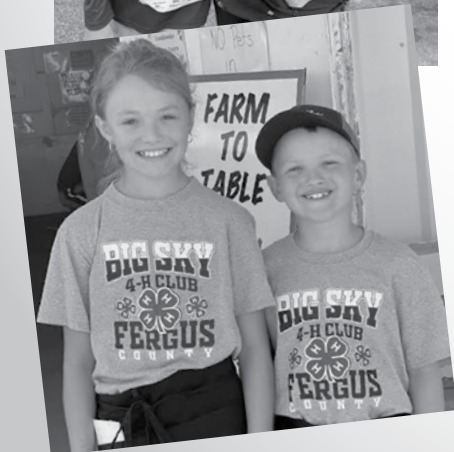
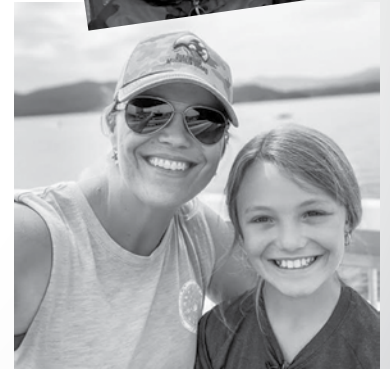
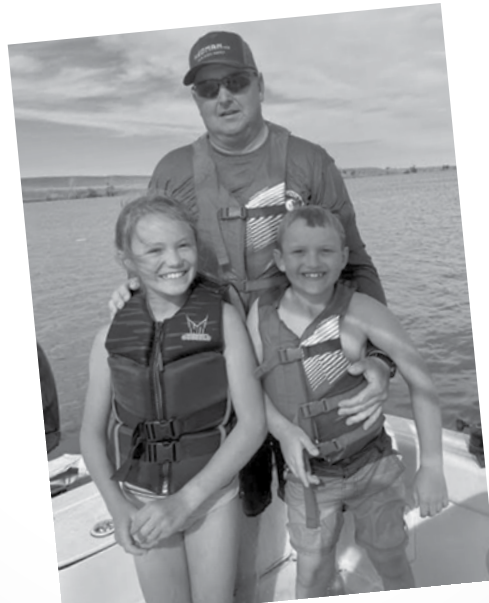
BW 80/107 WW 730/122 YW 1322/116 %IMF 3.92/119 BF 0.21/93 REA 14.08/116

	ProS	HB	GM	CED	BW	WW	YW	MILK	ME	HPG	CEM	STAY	MARB	YG	REA
EPD	110	47	63	11	-1.0	76	124	36	14	14	6	15	0.69	-0.01	0.36
Pctl	23%	55%	14%	75%	63%	13%	13%	2%	92%	24%	74%	44%	13%	18%	17%

1004 is from the Daigger-Orr sale in NE. He has eight category top EPD %'s, including top 14 GM. We like the performance and maternal character in his calves and they are ample sized and have stout dimension. Sons sell as Lots 100-101. Daughters are offered as Lots 112, 117, and 124.

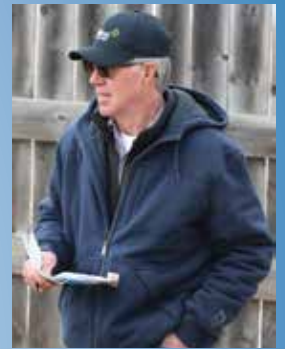


**2023-  
2024**





# THANK YOU FOR YOUR ATTENDANCE



## RELY ON WESTPHAL RED ANGUS

• Providing dependable Red Angus genetics gives you reputable, high performance feeder calves, and productive replacement heifers that make profitable mother cows.

### ONLY THE TOP END SELLS

• Our three pronged goals include a top end bull offering, highly maternal females and heavy “push down the scales” feeder calves. This selection pressure means 50% of the bulls are made steers and fed commercially for carcass data.

### NO DATA OVERLOOKED

• Complete data is provided on every lot including EPD’s, MPPA, and performance info. Bulls are fertility tested with scrotal measurements.

### SALE DAY – COME VIST AND SEE THE VGW COWHERD

• MARCH 27, 2024. Have lunch, walk through the sale bulls and females, and take a look at the cowherd. Call if you can’t make it to the sale.

All sight unseen purchases sell satisfaction guaranteed.

### FREE DELIVERY

• Delivery on bulls is free in Montana and adjoining states, OR haul your own and receive a rebate. Details on page 1.

### DEICHMANN LIVESTOCK PURCHASING WESTPHAL FEEDERS

• Feeder procurement service to our customers. Over the past 30 years Deichmann Livestock has placed thousands of our customer’s calves. They are readily accepted throughout the feeding industry and DLB bids and purchases VGW-sired feeders every year.



**DEICHMANN LIVESTOCK BROKERAGE**

Dan & Marilyn Deichmann  
P.O. Box 310 • Hobson, MT 59452  
406-423-5500 • 406-423-5640 Fax

ADDRESS SERVICE REQUESTED

FIRST CLASS MAIL  
AUTO  
U.S. POSTAGE  
**PAID**  
LEWISTOWN, MT  
Permit No. 181

# First Class Mail



## SELLING

**102 BULLS**  
Yearling Bulls

Sell Satisfaction Guaranteed



**92 FEMALES**

Registered and Commercial

Sell Guaranteed to Breed

