

The key to our bull power...

# GENERATIONS OF COW FAMILIES



Raising Registered Red Angus Since 1976

At the Ranch • Grass Range, Montana  
12:30 PM

# MARCH 25 2020



THE  
VGW  
PREFIX

# GENERATIONS OF COW FAMILIES





**Vic & Shari Westphal**  
 Box 72, Grass Range, Montana 59032  
 406-428-2179 Phone  
 406-428-2107 Sale Day Phone  
 406-366-4069 Cell



westphalredangus.com  
 email: westphal@midrivers.com



Welcome to our 2020 Sale!  
 Wow, what a difference between calving seasons! This year compared to 2018 and 2019 – the average temperature difference is 50 degrees. We are so thankful! We have been able to let the cows out of their smaller, more confined space around the barns, to a larger lot which has led to lower birth weights. The Red Angus convenience traits are critical in unpredictable environments. It's important to know your cattle will perform in harsh conditions – ours do.

Thank you for your business. We believe the cattle industry must concentrate on balanced traits for their cattle. Here at Westphal Red Angus, that has always been our strategy. We have never chased one EPD over another, and in doing so, we have remained balanced. We believe in balanced traits in birth weight, weaning weight, yearling weight, milk and disposition will lead to consistency in the cows, calves, bulls and into generations of cow families. This is evident in not only our bull battery both AI and natural but also in the multiple generation of VGW females. We believe our balanced approach will work for commercial and registered breeders alike. The strict standards that our cattle were held to in 1976 (when we started our Red Angus herd) are even more stringent today. Our cattle must perform on paper as well out in the pasture.

Red Angus cattle are in demand with the many positive attributes they contribute to all sectors of the cattle industry. The cattle have taken good care of us and will do the same for you. We are not only purebred breeders; we also sell calves by the pound. We know firsthand that our genetics will work in the "real world" environment. We know our bulls will work on your commercial cattle because we use them on our commercial herd.

Once again, we are offering heifers from the heart of our operation. One of our toughest days every year, is the day we sort heifers for the sale – such hard decisions. You will not be disappointed in the collection of heifers available on sale day and know that you will find them as wonderful as we do.

We have the high quality and high-performance cattle you're looking for with heifer and cow bulls. Our 2020 bull offering has a strong group of heifer bulls, with the calving ease you are looking for. The strength of our ranch depends on our ability to provide you with exceptional cattle, fresh genetics and reliable up-to-date decision-making information. Your success is our success! We strive to meet your needs and know you will find solution-based cattle at our sale on March 25, 2020.

Our greatest joy has been spending time with our grandchildren, Leah and AJ. We are so thankful for being able to be part of their lives. Jenni continues to be an intricate part in running the ranch. She has begun working for Granite Construction as a consultant once again. Also, Brett and Jenni's ag and steel business, Hedman Inc. continues to be a success and provides high quality solutions for the rancher, farmer, fencer, and welder. They all live in their new home across the highway from us. Vic continues to miss coaching high school kids and hanging out in gyms, but his former players help with updates in their lives. He introduced Leah and AJ to bow hunting this year and was proud of Leah's first hunting success (a rabbit). Shari continues her love of the ranch, animals, and fiber arts. Trevor works at St Peter's Hospital and Safeway in Helena.

We look forward to seeing you! Come check out the cattle and join us for lunch.

Sincerely,  
 Vic and Shari Westphal  
 Jenni, Brett, Leah and AJ Hedman



**Vic & Shari**



**Jenni, AJ, Leah  
& Brett Hedman**



**Dan Deichmann**



#### **DEICHMANN LIVESTOCK BROKERAGE**

Dan & Marilyn Deichmann  
 P O Box 310 • Hobson, MT 59452  
 406-423-5500 • Cell 406-799-5200 • www.dlbbroker.com

Dear Cattlemen;

Without a firm foundation, a building will crumble. So it stands that females with cow families as deep as you find at Westphal Red Angus represent a superior genetic foundation. This foundation converts to performance, with the Westphal program strongly accepted with bravos from both cow calf producers and commercial feeders.

The passion and dedication is here. Vic, Shari and Jenni have spent decades carefully growing this herd of Red Angus cattle, and the bulls and heifers selling have this solid foundation, this brick and mortar. Look at what forty plus years of genetics has put into every lot. The offering cataloged not only represents a solid multi-generational program, but the true passion and dedication to not only breed superior Red Angus, but to take responsibility for their customers needs to heart, and breed cattle that insure profit and success. Jenni continues to take an increasing role, and her bulls in the offering have the JKW prefix.

What's special about the Westphal cowherd is their dedication to a firm genetic foundation for cowherd-improving traits. There are years and years of building a program here with up to twelve-generation cow families represented in this offering.

Come enjoy your day at the Westphal Sale, and bid on and purchase tremendous Red Angus genetics. Have lunch or dinner and take the opportunity to see a sale offering built on decades of superior genetic selection. I look forward to visiting about the business, talking about markets, purchasing your calves or yearlings, or about breeding or buying bulls and females. Give me a call for sight-unseen guaranteed purchases at the Westphal Sale, or come by and visit sale day.

Sincerely,  
 Dan Deichmann  
 Deichmann Livestock



## GENERAL INFORMATION



### CENTRAL MONTANA'S LEADING RED ANGUS SOURCE

# MARCH 25, 2020

12:30 PM Mountain Time • At the ranch • Grass Range, MT

Join us for a beef lunch at 11:30 AM.

### LOCATION - SALE SITE

The sale is held at our ranch, Grass Range, Montana. We are approximately four miles west of the Highway's 87-200-19 junction. Watch for ranch sign and turn north off Highway 87 into headquarters. Trailer parking on south side of Highway.

### AUCTIONEER

Ty Thompson.....Billings, Montana

### SALE REPRESENTATIVES

Western Ag Reporter.....John Goggins  
Western Livestock Journal.....Devin Murnin  
Prairie Star/Farm & Ranch Guide.....Jeff Thomas  
Red Angus Association.....Katie Oschner

### INSURANCE

We recommend insuring your purchases at the sale.  
Jeff Thomas.....XL Catlin Insurance  
See Jeff or ask at the clerks' table about insurance.

### SALE DAY PHONES

406-428-2179.....Westphal Main Land Line  
406-428-2107.....Sale Day Only Land Line  
406-366-4069.....Vic Westphal Cell Phone  
406-799-5200.....Dan Deichmann Cell Phone

### SALE MANAGEMENT

#### MARKETING & FEEDER PROCUREMENT



DEICHMANN LIVESTOCK BROKERAGE  
Dan & Marilyn Deichmann  
P.O. Box 310, Hobson, MT 59452  
406-423-5500 406-799-5200  
www.dlbbroker.com

### SPECIAL GUESTS

RAAA 2nd Vice President... Chuck Feddes, Manhattan, MT  
RAAA Board Member.....Kay Klompier, Manhattan, MT  
Montana RA President.....Chris Pierce, Molt, MT

### ACCOMMODATIONS

Lewistown is 26 miles west of our ranch. Lodging options:  
B&B Motel, 520 E Main St.....406/535-5496  
Calvert Hotel, 216 7th Ave S.....406/535-5411  
Super 8 by Wyndham, 102 Wendell Ave.....406/538-2581  
Yogo Inn, 211 E Main St.....406/535-8721

### SIGHT UNSEEN PURCHASE GUARANTEE:

We are glad to take time to understand your needs and assist with sight-unseen guaranteed purchases. If you can't make it sale day please call Vic Westphal or Dan Deichmann. We'll bid on and purchase the best bulls or heifers possible for you. We'll let you know your purchases after the sale. If you're not satisfied at delivery, you don't own them!

### SELLING

A TOP OFFERING OF RED ANGUS SEEDSTOCK SELLS.

**102 Yearling Registered Bulls - 1A, 1B**

*Westphal Red Angus is retaining 50% interest in each bull in the sale. Buyer(s) purchase 50% revenue-sharing interest and full possession in each bull. Full salvage value of each bull goes to the Buyer(s).*

**32 Registered Open Heifers - 1A, 1B**

**43 Commercial Open Heifers**

### SALE ORDER

The sale order will be available late in the day, Tuesday, March 24.  
Please look for it on our website...  
[www.westphalredangus.com](http://www.westphalredangus.com)

### INSPECTION OF THE CATTLE

The bulls and heifers may be seen at Boyce Feed Yard until early March 22; then at the ranch until sale day. From Lewistown: 14 miles.

### DELIVERY & LOADOUT

We offer **FREE DELIVERY ON ALL BULLS, AND ON ALL HEIFER PURCHASES OVER \$5000**, around Montana and to central points in adjoining states. All other deliveries will be at cost and loads will be coordinated, as much as possible. **WE OFFER \$100 PER HEAD PER BULL REBATE, AND \$25 PER HEAD PER HEIFER REBATE, ON PURCHASES TAKEN HOME BY BUYERS ON SALE DAY.** We ask that no cattle be loaded until the completion of the auction. Our crew will assist with load-out in a timely manner.

### HERD HEALTH

Herd Veterinarian.....Dr. Paul Brady  
Lewistown Vet Service.....406-538-3663

**All cattle selling have been tested BVD-PI negative.** All heifers are vaccinated for Bangs and have been administered Preg-Guard 10.

### TERMS & CONDITIONS, GUARANTEES AND REGISTRATIONS

See complete sale terms and conditions on Page 40.  
See breeding and specific guarantees, and transfer information on Page 2.

### WESTPHAL HERD SIRES - SEMEN SALES

We offer semen on herd sires in our program. Contact us for information and semen pricing on any of our sires.

## EXPLANATION OF CODES

### We provide extensive information on our sale cattle, including...

- BW, dam age, 205 Adj WW and projected sale day weights along with 14 EPD categories on each bull lot, with 11 EPD's on the females.
- Dam MPPA numbers are shown, or are available on each lot at [www.redangus.org](http://www.redangus.org).
- Top 25% EPD's are noted in footnotes.
- Scrotal and ultrasound information will be provided on the supplement.

### A look at our information...

**BW** – We take birth weights within 24 hours. Circumstances influencing birth include...

- BW influences calving ease by 65%.
- The dam has 60-70% influence on BW of calf. The bull has 30-40% influence.
- Pelvic measurement and angle, and shape of the calf, has 35-40% influence on calving ease.
- Length of gestation greatly affects birth weight.
- Temperature and weather the final 30 days of pregnancy affect gestation length.
- Maturity and size of the dam influences calving ease, especially in heifers.

All traits are relative. Increased growth and performance increase BW. If a calf has genetics for growth, this trait will present both pre and post birth. Continued selection for light BW will ultimately reduce the mature size and performance of cattle. A cow should easily give birth to a calf that weighs 8% of her body weight.

### 205 ADJUSTED WEANING WEIGHTS

Weaning weights are adjusted to 205 days, and for the age of the dam. Weaning weights primarily provide a measurement of the dam's milking ability, but also indicate differences in growth potential of a calf.

### PROJECTED SALE DAY WEIGHT

The bulls were weighed in early February, and from the resulting yearling weights (adj) a projected sale day weight was calculated. They are projected for comparison use only.

### PERCENTAGE RED ANGUS

**1A** - 100% Pureblood Red Angus — registered

**1B** - 87% to 99% Red Angus — registered.

**Comm.** - Commercial Red Angus - unregistered (no papers)

### EXPECTED PROGENY DIFFERENCES

EPD's are a prediction of the difference between the average performance of future progeny of an individual, and the performance of progeny of a theoretical reference animal with an EPD of zero (0). EPD's are calculated from pedigree, individual performance and progeny. EPD's are the only measurement comparable across herds in the same breed.

EPD abbreviations: **HB**: Herdbuilder; **GM**: Gridmaster;

**CED**: Calving Ease Direct; **BW**: Birth Weight; **WW**: Weaning Weight;

**YW**: Yearling Weight; **ADG**: Average Daily Gain;

**DMI**: Dry Matter Intake **MK**: Milk; **ME**: Maintenance Energy;

**HPG**: Heifer Pregnancy; **CEM**: Calving Ease Maternal; **ST**: Stayability;

**MARB**: Marbling; **YG**: Yield Grade; **CW**: Carcass Weight;

**REA**: Rib Eye Area; **FAT**: Backfat.

RAAA BOLT EPD's change weekly. EPD's and percentiles listed here were current when we pulled catalog information. Dated: 02-14-2020. Updated EPD's, percentiles and accuracies may be seen any time at the [redangus.org](http://redangus.org) website.

**Our average EPD's are above breed average in numerous categories year after year. See the breed and VGW EPD comparison chart on Page 36.**

### PERCENTAGES SELLING

**We are retaining 50% interest in every bull in the sale. Selling in each bull is 50% revenue-sharing interest and full possession. Salvage value goes to the Buyer(s).**

### SCROTAL MEASUREMENTS

Scrotal centimeter measurements on all bulls will be available on the sale day supplement.

### RAAA CURRENT STATISTICAL INFORMATION

The American Red Angus Association website is [www.redangus.org](http://www.redangus.org). EPD, weight, nursing ratio, MPPA, pedigree and additional information are available on any registered Red Angus animal.

## FIRST SEASON BREEDING GUARANTEE - BULLS

All bulls are semen checked by a licensed veterinarian, are guaranteed breeders, and passed a fertility test. They are guaranteed breeders for the first 60-day breeding season only. This covers broken penis, disposition, or genetic structural feet or leg problems, verified by a written veterinarian statement within 15 days of loss of use. We reserve the right to a second opinion by a veterinarian of our choice. It does not cover injury or loss of use of a bull, if bull is turned in with other bulls prior to being turned out at the start of the first 60-day breeding season. As full resolution we will provide to Buyer a suitable replacement, or Buyer will receive credit minus salvage value of original bull, towards purchase of a bull in next year's sale. **This guarantee does not cover death. Mortality insurance is available sale day.**

## FIRST SEASON BREEDING GUARANTEE - HEIFERS

All heifers sell guaranteed open. All are guaranteed to breed by natural service in the first 60-day breeding season, when exposed naturally to a sire known to be a breeder. If a heifer does not breed under these conditions, as full resolution, Buyer will receive credit minus salvage value of original heifer, towards purchase of a heifer in next year's sale. Guarantee is void if heifer is used in an embryo transplant or in-vitro fertilization program.

**This guarantee does not cover death. Mortality insurance is available sale day.**

## RAAA REGISTRY CERTIFICATE

Each registered animal selling will received a transferred RAAA registration paper, following full settlement. Deichmann Livestock completes transfers. Please call them at 406/423-5500 with questions.





LOT 1 - VGW HEISMAN 911

- HEISMAN 911 lives up to his name with his square profile, abundant thickness from front end to rear quarter and overall correctness. He's built to be contender for top spot in any program. You can look long and hard trying to find a prospect with more quarter from his topline down into his square stance. Here's an extra long-sided herd bull with a wide-set profile, that's been destined for greatness since birth. His BW to WW spread is 75 lbs. BW to 741 Adj WW. He's a twin to a heifer.
- VGW Cow family 8th generation female. MPPA 99.
- Top percentile EPD's: WW 7%, YW 6%, ADG 8%, CW 5%, FAT 24%.

WESTPHAL  
1

## VGW HEISMAN 911

BULL

Reg: 4142790 • VGW 911 • Clvd: 1/31/19 • 100% 1A

5L MTN SIGN 435-10Z

JACOBSON MOUTAINEER 5076

3498602 JACOBSON SARA 3071

RED CROWFOOT MOONSHINE 8081U

VGW MOON-STAR 1313

1630501 VGW KW STAR 0221

BW	DAM AGE	205 ADJ WT	PRJ SALE WT
75	6	741	1500

EPDs	
HB	166
GM	49
CED	12
BW	-0.9
WW	71
YW	114
MK	23
ME	-1
HPG	12
CEM	6
ST	15
MARB	0.45/19
YG	0.16/18
REA	-0.05/22

WESTPHAL  
2

## JKW 902 PANCHO

BULL

Reg: 4157494 • JKW 902 • Clvd: 2/3/19 • 100% 1A

5L DEFENDER 560-30Z

5L THE REAL DEAL 1687-143B

1701634 5L FIREFLY 275-1687

RED CROWFOOT MOONSHINE 8081U

JKW 1401 MOON DOLLY

1709472 VGW 386-DOLL 0670

BW	DAM AGE	205 ADJ WT	PRJ SALE WT
89	5	713	1370

EPDs	
HB	170
GM	48
CED	14
BW	-0.7
WW	68
YW	112
MK	20
ME	-4
HPG	11
CEM	9
ST	15
MARB	0.43/25
YG	0.07/23
REA	0.12/27



LOT 2 - JKW 902 PANCHO

- PANCHO 902 has a deep, wide, ideal profile and complete pattern. Here's as stout a sire prospect as you'll find, and JKW 902 has a solid, square stance with very good movement. This is Jenni's lead off sire this year, and he's a good dispositioned prospect by 5L The Real Deal who's top 1% for ADG EPD. JKW 902 will add extra pounds to his calves.
- VGW Cow family 6th generation female. MPPA 100.
- Top percentile EPD's: WW 11%, YW 8%, ADG 7%, ME 22%, CEM 18%.



LOT 3 - VGW BARRICADE 966

- BARRICADE 966 carries all the breeding power you look for in a herd sire prospect. His big rib and depth combine into a meat machine with loads of middle and quarter. This Mountaineer son is out of a VGW six generation Firefly dam with a 106 MPPA. His fall born Megatron dam had a light 63 lb. actual birth weight and ratios of 109 WW and 107 YW on her first three sons.
- VGW Cow family 6th generation female. MPPA 106.
- Top percentile EPD's: WW 11%, YW 10%, ADG 11%, Milk 11%, Marb 23%, CW 3%.

WESTPHAL  
3

## VGW BARRICADE 966

BULL

Reg: 4142656 • VGW 966 • Clvd: 2/17/19 • 100% 1A

5L MTN SIGN 435-10Z

JACOBSON MOUTAINEER 5076

3498602

JACOBSON SARA 3071

VGW MEGATRON 141

VGW MEG-FIREFLY 14102

1749795

VGW 286-FIREFLY 0569

BW	DAM AGE	205 ADJ WT	PRJ SALE WT
89	5	739	1325

EPDs	
HB	181
GM	48
CED	13
BW	0.0
WW	68
YW	111
MK	28
ME	0
HPG	11
CEM	8
ST	17
MARB	0.51/19
YG	0.22/20
REA	-0.06/24

WESTPHAL  
4

## VGW AUTOMATIC 971

BULL

Reg: 4142742 • VGW 971 • Clvd: 2/22/19 • 100% 1A

5L BOURNE 117-48A

VGW AUTOMATIC 724

3764673

VGW NAV-DORA 1547

LSF JOURNEY 1169Y

VGW JOUR-CHRSS 13123

1689433

VGW M183-CHRSS 0803

BW	DAM AGE	205 ADJ WT	PRJ SALE WT
70	6	676	1300

EPDs	
HB	219
GM	49
CED	15
BW	-3.7
WW	58
YW	95
MK	31
ME	-1
HPG	14
CEM	9
ST	20
MARB	0.61/11
YG	0.16/16
REA	-0.06/21



LOT 4 - VGW AUTOMATIC 971

- AUTOMATIC 971 is square end-to-end, with added dimension, depth and thickness. You'll like his smooth look and fleshing ability, and you'll hope every son looks just like him. Here's a breed pacing EPD profile with 9 category top percentiles including top 2% HerdBuilder and Milk. There's bred in, extensive all-around production here.
- VGW Cow family 7th generation female. MPPA 100.
- Top percentile EPD's: HB 2%, GM 22%, CED 18%, BW 10%, Milk 2%, HPG 10%, CEM 10%, Stay 6%, Marb 10%.



**LOT 5 - VGW PUBLISHER 959**

WESTPHAL  
**5**

**VGW PUBLISHER 959****BULL**

Reg: 4142796 • VGW 959 • Clvd: 2/13/19 • 100% 1A

5L GAME ON 703-50C

VGW EDITOR 702

3764711

5L SUNBUSRT 233-3355

5L RED TRADER 1416-396V

VGW 396V-CAMILLE 1093

1412560

VGW GS-CAMILLE 0680

BW	DAM AGE	205 ADJ WT	PRJ SALE WT
86	9	797	1390

EPDs	
HB	164
GM	47
CED	13
BW	-0.9
WW	65
YW	101
MK	31
ME	-3
HPG	12
CEM	7
ST	15
MARB	0.52/10
YG	0.16/16
REA	-0.02/21

- PUBLISHER 959 has pattern, deep rib and a correct shape from front to back. He's got extra length with long hip and deep quarter. He was second top of 121 contemporaries at weaning with a 797 Adj WW. A clean front adds to his free movement, and gentle disposition. His calves will push down the scales in the fall. Camille 1093 sports an excellent 107 MPPA, with a WWR of 108 on six progeny.
- VGW Cow family 6th generation female. MPPA 107.
- Top percentile EPD's: WW 21%, Milk 2%, Marb 22%.

WESTPHAL  
**6**

**VGW BUMPER CROP 967****BULL**

Reg: 4142716 • VGW 967 • Clvd: 2/18/19 • 100% 1A

ANDRAS FUSION R236

VGW BUMPER CROP 510

3475897

RED CROWFOOT PRINCENE 3222A

VGW MEGATRON 141

VGW MEG-CRISTINA 1453

1696281

VGW 554T-CRISTINA 1079

BW	DAM AGE	205 ADJ WT	PRJ SALE WT
89	5	716	1355

EPDs	
HB	143
GM	49
CED	11
BW	0.2
WW	65
YW	108
MK	25
ME	-6
HPG	11
CEM	6
ST	12
MARB	0.48/17
YG	0.12/18
REA	0.12/22

- BUMPER CROP 967 is one of the prospects you'll see on your first pass through the pens. Note his correct frame, large, deep quarter and bold spring of rib. He's a dark colored, fancy lead off prospect for the Bumper Crop herd sire group. Here's one of the top sale bulls that will stamp his sons just like him.
- VGW Cow family 6th generation female. MPPA 98.
- Top percentile EPD's: GM 21%, WW 21%, YW 13%, ADG 8%, ME 11%, CW 12%.

**LOT 6 - VGW BUMPER CROP 967**



LOT 7 - VGW DOMAIN 910P

- DOMAIN 910P is the model of the 3SCC Domain A163 prospects. We have to comment on his length, his strong quarter that carries down into his square base and an attractive all-around profile. Here's a balanced, wide-backed, stout sire with breed leading EPD percentiles of top 2% HerdBuilder and 1% Stay.
- VGW Cow family 7th generation female. MPPA 98.
- Top percentile EPD's: HB 2%, Stay 1%, Marb 17%.

## VGW DOMAIN 910P

BULL

Reg: 4142750 • VGW 910P • Clvd: 2/14/19 • 99.8% 1B

BECKTON DOMINOR T122 Z1

3SCC DOMAIN A163

1619642 3SCC EUCLA X723

RED CROWFOOT MOONSHINE 8081U

VGW MOON-RED P1310

1630489 VGW S163 RED P0818

BW	DAM AGE	205 ADJ WT	PRJ SALE WT
81	6	724	1290

EPDs	
HB	220
GM	48
CED	14
BW	-1.4
WW	63
YW	99
MK	22
ME	0
HPG	12
CEM	6
ST	22
MARB	0.55/23
YG	0.20/22
REA	-0.10/27

## VGW EDITOR 930

BULL

Reg: 4142414 • VGW 930 • Clvd: 2/6/19 • 100% 1A

5L GAME ON 703-50C

VGW EDITOR 702

3764711

5L SUNBUSRT 233-3355

XO CROWFOOT 0102X

RED CROWFOOT PRINCENE 3222A

1673857

CROWFOOT PRINCENE 157X

BW	DAM AGE	205 ADJ WT	PRJ SALE WT
83	6	680	1280

EPDs	
HB	143
GM	46
CED	13
BW	-1.5
WW	57
YW	86
MK	27
ME	-11
HPG	14
CEM	5
ST	13
MARB	0.51/10
YG	0.15/16
REA	-0.03/21



LOT 8 - VGW EDITOR 930

- This Editor 930 son is easy moving, extra long sided, thick and square on good legs and feet. You'll easily find him on sale morning or at the development lot. He is top 1% in ME EPD. We're excited about this first group of Editor 702 sons in the sale. Two maternal sisters are retained in the program.
- Red Crowfoot bred female, from Canada. MPPA 103.
- Top percentile EPD's: Milk 17%, ME 1%, HPG 11%, Marb 23%.



DAM OF LOT 8

RED CROWFOOT PRINCENE 3222A



WESTPHAL  
9

## VGW EDITOR 942

BULL

Reg: 4142788 • VGW 942 • Clvd: 2/9/19 • 100% 1A

5L GAME ON 703-50C

VGW EDITOR 702

3764711 5L SUNBUSRT 233-3355

LSF JOURNEY 1169Y

VGW JOUR-INDIGO 13129

1689442 VGW 554T-INDIGO 1008

BW	DAM AGE	205 ADJ WT	PRJ SALE WT
91	6	650	1350

- EDITOR 942 has extra thickness and size on a wide base with a thick, muscular frame. He's massive and deep ribbed with deep belly and a nice stride. His Journey-Indigo dam has a daughter retained in the herd, and sons sold in 2017 and 2019.

- VGW Cow family 6th generation female. MPPA 101.
- Top percentile EPD's: GM 18%, Milk 3%, ME 22%, Marb 14%.

EPDs	
HB	175
GM	49
CED	11
BW	-0.7
WW	57
YW	95
MK	30
ME	-4
HPG	12
CEM	5
ST	16
MARB	0.57/11
YG	0.15/16
REA	-0.08/22



LOT 9 - VGW EDITOR 942

WESTPHAL  
10

## VGW ARTILLERY 920

BULL

Reg: 4142422 • VGW 920 • Clvd: 2/3/19 • 100% 1A

5L GAME ON 703-50C

VGW EDITOR 702

3764711 5L SUNBUSRT 233-3355

5L DEFENDER 560-30Z

5L SALEE 4563-4335

3483895 5L SALEE 7138-4563

BW	DAM AGE	205 ADJ WT	PRJ SALE WT
69	4	708	1290

- ARTILLERY 920 is bred to be a pound maker sire!! He is beefy and full of red meat from end to end on a moderate sized frame, with a wide top and mass deep into his lower quarter. His 5L Defender dam sold bulls in each of our last two sales.

- 5L Red Angus bred female. MPPA 102.
- Top percentile EPD's: CED 4%, BW 8%, ME 5%, Marb 8%.

EPDs	
HB	158
GM	47
CED	17
BW	-4.0
WW	58
YW	92
MK	26
ME	-8
HPG	12
CEM	8
ST	13
MARB	0.63/13
YG	0.09/20
REA	0.07/27



LOT 10 - VGW ARTILLERY 920

WESTPHAL  
11

## VGW MARSHALL 903

BULL

Reg: 4142578 • VGW 903 • Clvd: 1/27/19 • 100% 1A

5L GAME ON 703-50C

VGW EDITOR 702

3764711 5L SUNBUSRT 233-3355

5L BOURNE FIRE 5353-52C

VGW BF-DORA 1769

3764309 VGW S163-DORA 1011

BW	DAM AGE	205 ADJ WT	PRJ SALE WT
73	2	723	1460

- MARSHALL 903 has a first calf heifer dam eleven generations deep in VGW breeding. The consistency and quality of these long-lived cow families add to the profit potential of their sons, and in-turn the calves you sell. With a 73 lb. birth weight, he converted to a 723 lb. adjusted weaning weight. Here's a prospect with profitable, long-bred trait balance from amazing top percentile EPD's in ten categories.

- VGW Cow family 11th generation female. MPPA 102.
- Top percentile EPD's: HB 14%, GM 19%, WW 23%, YW 19%, ADG 18%, Milk 14%, ME 16%, HPG 16%, Stay 24%, and Marb 16%.

EPDs	
HB	194
GM	49
CED	13
BW	-2.1
WW	64
YW	105
MK	27
ME	-5
HPG	13
CEM	6
ST	18
MARB	0.56/10
YG	0.13/16
REA	0.05/22

WESTPHAL  
12

## VGW SLAM DUNK 906

BULL

Reg: 4142608 • VGW 906 • Clvd: 1/30/19 • 100% 1A

5L GAME ON 703-50C

VGW EDITOR 702

3764711 5L SUNBUSRT 233-3355

ANDRAS THUNDER A092

VGW TH-STAR 1745

3764459 VGW DD-STAR 1303

BW	DAM AGE	205 ADJ WT	PRJ SALE WT
72	2	718	1390

- SLAM DUNK 906 answers the call with eleven generations of VGW females behind him, and Editor 702 who combines Beckton Nebula and 5L Game On genetics. We are very pleased with this strong group of Editor sons. His first-calf-heifer dam is top 1% WW, 4% YW, and 2% CW EPD values for loads of bred-in performance and pounds. His calves will be beef machines.

- VGW Cow family 11th generation female. MPPA 102.
- Top percentile EPD's: WW 9%, YW 15%, Milk 9%, ME 20%, HPG 16%, CW 11%.

EPDs	
HB	182
GM	47
CED	14
BW	-1.6
WW	69
YW	107
MK	28
ME	-4
HPG	13
CEM	7
ST	17
MARB	0.40/11
YG	0.14/17
REA	0.09/23

WESTPHAL  
13

## VGW EDITOR 904

BULL

Reg: 4142622 • VGW 904 • Clvd: 1/27/19 • 100% 1A

5L GAME ON 703-50C

VGW EDITOR 702

3764711 5L SUNBUSRT 233-3355

JACOBSON MOUTAINEER 5076

VGW MT-DORY 17107

3764537 VGW JOUR-DORY 13127

BW	DAM AGE	205 ADJ WT	PRJ SALE WT
68	2	673	1325

- We're excited about the group of first calf heifers we bred to Editor 702, and what an impressive set of resulting sons, retained daughters and a daughter selling as Lot 115. EDITOR 904 is moderate sized with a square stance, large testicles, and he's smooth from shoulder to lower hindquarter. He's got extra thickness, is full of red meat and started at a modest 68 lb. birth weight.
- VGW Cow family 7th generation female. MPPA 99.
- Top percentile EPD's: Milk 13%, ME 23%, Marb 14%, CW 21%.

EPDs	
HB	181
GM	48
CED	14
BW	-1.8
WW	61
YW	97
MK	28
ME	-4
HPG	12
CEM	7
ST	17
MARB	0.57/10
YG	0.19/16
REA	-0.14/21

WESTPHAL  
16

## VGW EDITOR 902

BULL

Reg: 4142606 • VGW 902 • Clvd: 1/26/19 • 100% 1A

5L GAME ON 703-50C

VGW EDITOR 702

3764711 5L SUNBUSRT 233-3355

3SCC NAVIGATOR A448

VGW NAV-FIREFLY 17101

3764455 VGW MOON-FIREFLY 1327

BW	DAM AGE	205 ADJ WT	PRJ SALE WT
76	2	653	1325

- EDITOR 902 is dark red colored with a thick, wide top and strong, deep quarter. He fits right in with the group of 702 sons if you're purchasing like-sired bulls. His dam is a first calf heifer seven generations deep in our Firefly cow family.
- VGW Cow family 7th generation female. MPPA 98.
- Top percentile EPD's: CED 23%, Milk 16%, ME 21%, HPG 21%.

EPDs	
HB	178
GM	47
CED	14
BW	-1.7
WW	58
YW	94
MK	27
ME	-4
HPG	13
CEM	7
ST	16
MARB	0.47/11
YG	0.17/16
REA	-0.07/22

WESTPHAL  
14

## VGW ULIMATE 946

BULL

Reg: 4142758 • VGW 946 • Clvd: 2/9/19 • 100% 1A

5L GAME ON 703-50C

VGW EDITOR 702

3764711 5L SUNBUSRT 233-3355

MESSMER COLUMBIA W054

VGW W054-FIREFLY 1261

1541758 VGW M82-FIREFLY 0479

BW	DAM AGE	205 ADJ WT	PRJ SALE WT
89	7	717	1400

- ULTIMATE 946 is a member of the strong set of Editor 702 sons this year, and has extra smooth shoulders, large barrel and bold lower quarter. His Firefly dam sold a maternal sister to a long time buyer in last years' sale.
- VGW Cow family 6th generation female. MPPA 103.
- Top percentile EPD's: GM 24%, WW 23%, YW 18%, ADG 15%, Milk 19%.

EPDs	
HB	167
GM	49
CED	13
BW	-0.6
WW	64
YW	105
MK	27
ME	-3
HPG	11
CEM	5
ST	15
MARB	0.43/12
YG	0.13/17
REA	-0.02/23

WESTPHAL  
17

## VGW EDITOR 908

BULL

Reg: 4142562 • VGW 908 • Clvd: 1/31/19 • 100% 1A

5L GAME ON 703-50C

VGW EDITOR 702

3764711 5L SUNBUSRT 233-3355

ANDRAS THUNDER A092

VGW TH-DORA 1741

3764331 VGW 396V-DORA 1089

BW	DAM AGE	205 ADJ WT	PRJ SALE WT
68	2	671	1285

- EDITOR 908 is full of meat and muscle, and he's a pounds-plus prospect. From a light 68 lb. BW, his Dora family dam is another first calf heifer producing strong sire potential in a very masculine, full-of-red-meat Editor 702 son. His calves are sure to push the scales in October.
- VGW Cow family 8th generation female. MPPA 99.
- Top percentile EPD's: CED 13%, BW 16%, Milk 3%, ME 23%.

EPDs	
HB	177
GM	46
CED	16
BW	-3.1
WW	57
YW	88
MK	30
ME	-4
HPG	12
CEM	8
ST	16
MARB	0.42/11
YG	0.11/17
REA	0.03/22

WESTPHAL  
15

## VGW EDITOR 909

BULL

Reg: 4142610 • VGW 909 • Clvd: 1/31/19 • 100% 1A

5L GAME ON 703-50C

VGW EDITOR 702

3764711 5L SUNBUSRT 233-3355

3SCC NAVIGATOR A448

VGW NAV-CHRSS 1773

3764461 VGW U199-CHRSS 1315

BW	DAM AGE	205 ADJ WT	PRJ SALE WT
62	2	622	1265

- EDITOR 909 is a moderate sized, very complete, straight-lined, light colored son of 702. With a first-rate phenotype he's out of an eleven generation VGW CHRSS first calf heifer. These long generation females add to the consistency we see in their offspring, and 909 has 8 top percentile EPD values, with a light 62 lb. birth weight.
- VGW Cow family 11th generation female. MPPA 96.
- Top percentile EPD's: HB 14%, CED 5%, BW 5%, Milk 5%, ME 14%, HPG 20%, CEM 16%, Marb 13%.

EPDs	
HB	194
GM	48
CED	17
BW	-4.4
WW	51
YW	84
MK	29
ME	-5
HPG	13
CEM	9
ST	17
MARB	0.58/11
YG	0.18/17
REA	-0.14/23

WESTPHAL  
18

## VGW EDITOR 913

BULL

Reg: 4142536 • VGW 913 • Clvd: 2/1/19 • 100% 1A

5L GAME ON 703-50C

VGW EDITOR 702

3764711 5L SUNBUSRT 233-3355

MLK CRK LEGEND 5209

VGW LEG-MERCEDES 1720

3764267 VGW M183-MERCEDES 0801

BW	DAM AGE	205 ADJ WT	PRJ SALE WT
74	2	651	1330

- We're enthusiastic about our first group of EDITOR 702 sons. They are deep-bodied, have long sides, straight tops and moderate birth weights. Many are out of first calf heifers, and the group performance is excellent. EDITOR 913 matches this set of half brothers, and fits the style and pattern. Take time to look at the entire sire group.
- VGW Cow family 9th generation female. MPPA 98.
- Top percentile EPD's: CED 22%, ADG 15%, Milk 25%.

EPDs	
HB	175
GM	48
CED	15
BW	-1.7
WW	60
YW	101
MK	26
ME	-3
HPG	12
CEM	8
ST	15
MARB	0.44/10
YG	0.15/16
REA	-0.01/22



WESTPHAL  
19

## VGW EDITOR 918

BULL

Reg: 4142634 • VGW 918 • Clvd: 2/2/19 • 100% 1A

5L GAME ON 703-50C

VGW EDITOR 702

3764711 5L SUNBUSRT 233-3355

BECKTON ACCENT C537 N3

VGW ACC-CHRSS 1770

3764667 VGW HS-CHRSS 1574

BW	DAMAGE	205 ADJ WT	PRJ SALE WT
71	2	651	1325

- EDITOR 918 is an eight category top percentile EPD sire to put on your heifer bull short list. He's backed by an eleven generation, first calf heifer Chrss dam. She's full of maternal power EPD's, and he had a light 71 lb. BW. The 702 sons are the largest sire group of reliable genetics in our sale this year.
- VGW Cow family 11th generation female. MPPA 98.
- Top percentile EPD's: HB 13%, CED 8%, BW 16%, ADG 25%, Milk 11%, ME 24%, HPG 25%, CEM 23%.

EPDs	
HB	194
GM	48
CED	16
BW	-3.2
WW	55
YW	94
MK	28
ME	-4
HPG	12
CEM	8
ST	17
MARB	0.46/10
YG	0.14/16
REA	-0.03/21

WESTPHAL  
22

## VGW LEADER 978

BULL

Reg: 4142766 • VGW 978 • Clvd: 2/25/19 • 100% 1A

5L GAME ON 703-50C

VGW EDITOR 702

3764711 5L SUNBUSRT 233-3355

5L RED TRADER 1416-396V

VGW 396V-YOGO 1330

1630585 VGW PAT-YOGO 0632

BW	DAMAGE	205 ADJ WT	PRJ SALE WT
88	6	692	1270

- LEADER 978 is a noteworthy, very complete, eye-appealing prospect from the heart of the Editor 702 sons being offered. He has large scrotal, is smooth front to back, long sided and square from the back as he walks out effortlessly. Watch for extra pounds on his sons, and production quality with his daughters.
- VGW Cow family 8th generation female. MPPA 103.
- Top percentile EPD's: Milk 5%, Marb 18%, CW 22%.

EPDs	
HB	165
GM	48
CED	13
BW	0.1
WW	63
YW	101
MK	29
ME	-3
HPG	12
CEM	8
ST	15
MARB	0.54/11
YG	0.17/16
REA	-0.08/22

WESTPHAL  
20

## VGW YUKON 951

BULL

Reg: 4142724 • VGW 951 • Clvd: 2/11/19 • 100% 1A

5L GAME ON 703-50C

VGW EDITOR 702

3764711 5L SUNBUSRT 233-3355

MESSMER COLUMBIA W054

VGW W054-HAZY 1390

1630446 VGW 508-HAZY 0832

BW	DAMAGE	205 ADJ WT	PRJ SALE WT
82	6	689	1305

- YUKON 951 is eye appealing with muscle expression throughout, a smooth front, ample in his rib with great length of hip, and stout through his lower quarter. You'll work hard to find a prospect more complete and correct on his feet and legs. A maternal half brother sold in last year's sale.
- VGW Cow family 6th generation female. MPPA 99.
- Top percentile EPD's: Milk 18%, Marb 12%.

EPDs	
HB	169
GM	49
CED	13
BW	-1.3
WW	59
YW	96
MK	27
ME	-3
HPG	12
CEM	6
ST	15
MARB	0.59/13
YG	0.14/18
REA	-0.08/25

WESTPHAL  
23

## VGW EDITOR 905P

BULL

Reg: 4142488 • VGW 905P • Clvd: 2/6/19 • 99.9% 1B

5L GAME ON 703-50C

VGW EDITOR 702

3764711 5L SUNBUSRT 233-3355

MESSMER COLUMBIA W054

VGW W054-RED P1307

1630479 VGW M82-RED P0411

BW	DAMAGE	205 ADJ WT	PRJ SALE WT
73	6	611	1270

- EDITOR 905P has outstanding structure, is full of easy-doing ability, and has style to spare. His topline is level and straight, and there is longevity and broodiness in the Red cow lines. A maternal half-sister sold in our 2019 sale.
- VGW Cow family 8th generation female. MPPA 96.
- Top percentile EPD's: CED 22%, BW 12%, DMI 22%, Milk 22%, Marb 13%.

EPDs	
HB	180
GM	48
CED	15
BW	-3.5
WW	51
YW	83
MK	26
ME	-3
HPG	12
CEM	6
ST	17
MARB	0.58/11
YG	0.14/17
REA	-0.14/22

WESTPHAL  
21

## VGW PRECISE 955

BULL

Reg: 4142502 • VGW 955 • Clvd: 2/12/19 • 100% 1A

5L GAME ON 703-50C

VGW EDITOR 702

3764711 5L SUNBUSRT 233-3355

5L RED TRADER 1416-396V

VGW RTR-HAZY 1162

1444894 VGW 2328-HAZY 0869

BW	DAMAGE	205 ADJ WT	PRJ SALE WT
91	8	765	1415

- PRECISE 955 stands on a wide base and the extra pounds produced will be exciting when you weigh his steer calves. Good sized, he's complete from front to back. He is out of a Hazy dam with a top 107 MPPA that's had three sons sell in recent sales.
- VGW Cow family 5th generation female. MPPA 107.
- Top percentile EPD's: GM 23%, WW 5%, YW 6%, ADG 9%, Milk 8%, Marb 22%, CW 7%.

EPDs	
HB	166
GM	49
CED	11
BW	0.6
WW	72
YW	115
MK	28
ME	-2
HPG	12
CEM	6
ST	15
MARB	0.52/11
YG	0.13/16
REA	0.11/21

Vic notes, "We have always concentrated on balanced traits in our cattle. We haven't chased one EPD over another, and in doing so have retained balance in our cattle. This is evident in our bull battery, both natural and AI, but also in the multiple generations of our females. We believe our balanced approach will work for commercial and registered breeders alike. "



LOT 24 - VGW EXCEED 957

- EXCEED 957 is an Intensity 714 son that can be anyone's first pick. His square, deep quarter amplifies his large hip, straight topline, and all-around "full of beef" look. He's sure to garner attention sale day. His Star cow family dam has ten generations of VGW maternal expertise.
- VGW Cow family 10th generation female. MPPA 99.
- Top percentile EPD's: HPG 16%.

WESTPHAL  
24

## VGW EXCEED 957

BULL

Reg: 4142514 • VGW 957 • Clvd: 2/12/19 • 100% 1A

5L BOURNE 117-48A

VGW INTENSITY 714

3764727

VGW MEG-SKY 14104

LARSON PALADIN 238

VGW PAL-STAR 1405

1696347

VGW U199-STAR 1235

BW	DAM AGE	205 ADJ WT	PRJ SALE WT
77	5	713	1305

EPDs	
HB	167
GM	48
CED	13
BW	-2.0
WW	63
YW	97
MK	25
ME	-2
HPG	13
CEM	7
ST	15
MARB	0.44/12
YG	0.10/17
REA	0.01/24

WESTPHAL  
26

## JKW 904 PAPPY

BULL

Reg: 4157492 • JKW 904 • Clvd: 2/10/19 • 100% 1A

5L BOURNE 117-48A

VGW INTENSITY 714

3764727

VGW MEG-SKY 14104

ANDRAS FUSION R236

JKW 1501 R236 DOLLY

3505143

JKW 386-RK SASHA

BW	DAM AGE	205 ADJ WT	PRJ SALE WT
82	4	698	1280

EPDs	
HB	188
GM	50
CED	12
BW	-1.7
WW	64
YW	102
MK	23
ME	-4
HPG	13
CEM	8
ST	17
MARB	0.61/12
YG	0.13/18
REA	0.03/25

- PAPPY 904 walks out well and is very free in his movement. He stands square, is smooth shouldered, and sired by our young, performance-packed sire, Intensity 714. He'll produce calves that satisfy your demands for loads of muscle expression. Docile and easy-going, he's a seven EPD category sire with both HerdBuilder and GridMaster top percentiles.
- VGW Cow family 7th generation female. MPPA 102.
- Top percentile EPD's: HB 21%, GM 13%, WW 22%, YW 24%, ME 21%, HPG 19%, Marb 10%.

WESTPHAL  
25

## VGW EXCITEMENT 938

BULL

Reg: 4142482 • VGW 938 • Clvd: 2/8/19 • 100% 1A

5L BOURNE 117-48A

VGW INTENSITY 714

3764727

VGW MEG-SKY 14104

LSF JOURNEY 1169Y

VGW JOUR-DORY 13127

1689428

VGW M517- DORY 0640

BW	DAM AGE	205 ADJ WT	PRJ SALE WT
93	6	729	1360

EPDs	
HB	188
GM	49
CED	8
BW	1.9
WW	69
YW	107
MK	26
ME	0
HPG	14
CEM	4
ST	19
MARB	0.49/11
YG	0.11/16
REA	0.02/23

- EXCITEMENT 938 is living up to his name, and stockmen evaluating the bulls take extra time to study him. A dark red prospect, he has a black nose, thick middle and back quarter, strong loin and plenty of depth for added pounds on his calves. A seven category top percentile EPD prospect with exciting potential.
- VGW Cow family 6th generation female. MPPA 104.
- Top percentile EPD's: HB 20%, GM 25%, WW 9%, YW 15%, Milk 26%, HPG 8%, Stay 14%.

## The story at Westphal Red Angus...

Generations are turned, and genetically sound improvement is realized through the performance of our herd. Improving Red Angus genetics for over forty years, this years' sale offering has decades of genetic stability. There are over twenty established VGW cow families with progeny selling and they are joined by a handful of new dam lines with prospects in the sale. Genetic consistency is featured.



WESTPHAL  
27

## VGW INTENSITY 940

BULL

Reg: 4142808 • VGW 940 • Clvd: 2/8/19 • 100% 1A

5L BOURNE 117-48A

VGW INTENSITY 714

3764727 VGW MEG-SKY 14104

HALFMANN MSN STATEMENT T376

VGW T376-INDIGO 1041

1374274 VGW LM- INDIGO 0364

BW	DAM AGE	205 ADJ WT	PRJ SALE WT
71	9	620	1355

- INTENSITY 940 is one of the very quiet bulls in the lot, and will follow you around the pen. Big ribbed, he's full of thickness on a moderate sized frame with a deep thick hindquarter. His Indigo dam has sold two sons in prior sales, has two daughters in the herd, and 940 is twin to a heifer.
- VGW Cow family 4th generation female. MPPA 101.
- Top percentile EPD's: GM 14%, WW 16%, YW 10%, ADG 8%, HPG 14%.

EPDs	
HB	179
GM	50
CED	9
BW	0.1
WW	67
YW	110
MK	24
ME	3
HPG	13
CEM	5
ST	17
MARB	0.45/11
YG	0.12/16
REA	0.07/23



## LOT 29 - VGW MOUNTAINEER 9110

TWIN LOTS 29 & 30  
WERE BOTH RAISED BY THEIR DAMWESTPHAL  
28

## VGW ELEVATE 958

BULL

Reg: 4142782 • VGW 958 • Clvd: 2/13/19 • 100% 1A

5L BOURNE 117-48A

VGW INTENSITY 714

3764727 VGW MEG-SKY 14104

BUF CRK THE RIGHT KIND U199

VGW U199-CHRSS 1315

1630379 VGW 396V-CHRSS 1088

BW	DAM AGE	205 ADJ WT	PRJ SALE WT
78	6	705	1255

- ELEVATE 958 does just that...every generation will be a genetic advancement on the past. The program comes together here with solid genetics from a ten-generation maternal cow family, and a five-generation cow family behind his exciting young sire, VGW Intensity 714.
- VGW Cow family 10th generation female. MPPA 100.
- Top percentile EPD's: HPG 8%, Marb 23%.

EPDs	
HB	172
GM	48
CED	12
BW	-2.0
WW	63
YW	97
MK	26
ME	-3
HPG	14
CEM	7
ST	15
MARB	0.51/12
YG	0.10/17
REA	-0.04/24

WESTPHAL  
29

## VGW MOUNTAINEER 9110

BULL

Reg: 4142936 • VGW 9110 • Clvd: 3/16/19 • 100% 1A

5L MTN SIGN 435-10Z

JACOBSON MOUNTAINEER 5076

3498602 JACOBSON SARA 3071

VGW MEGATRON 141

VGW 141-DORA 1398

1630540 VGW R667-DORA 1044

BW	DAM AGE	205 ADJ WT	PRJ SALE WT
73	6	780	1250

- MOUNTAINEER 9110 is one of the longest bulls in the offering, with a dramatic 780 lb. Adj WW. When you look you'll note his straight lines, deep middle, hip and quarter, and thick eye-appealing muscle shape. Make a note to add him to your "take a look at" list. He's just "the right kind" and although not the largest framed prospect, he can produce daughters that are second to none.
- VGW Cow family 9th generation female. MPPA 101.
- Top percentile EPD's: WW 8%, YW 8%, ADG 10%, Marb 23%, CW 3%.

EPDs	
HB	168
GM	48
CED	10
BW	0.5
WW	70
YW	113
MK	25
ME	0
HPG	12
CEM	5
ST	16
MARB	0.51/17
YG	0.21/18
REA	-0.05/22

JACOBSON MOUNTAINEER 5076 -  
SIRE OF LOTS 30-36WESTPHAL  
30

## VGW MOUNTAINEER 9109

BULL

Reg: 4142684 • VGW 9109 • Clvd: 3/16/19 • 100% 1A

5L MTN SIGN 435-10Z

JACOBSON MOUNTAINEER 5076

3498602 JACOBSON SARA 3071

VGW MEGATRON 141

VGW 141-DORA 1398

1630540 VGW R667-DORA 1044

BW	DAM AGE	205 ADJ WT	PRJ SALE WT
84	6	746	1170

- 9109 is thick, full of red meat, and has a top performance line-up of EPD percentages. He has typical Mountaineer body type, thick end to end, and is ready for turn out. You'll like him sale day, and the day you turn him out, and even more when you bring him home from the breeding pasture. His maternal half brother sold last year.
- VGW Cow family 9th generation female. MPPA 101.
- Top percentile EPD's: WW 8%, YW 8%, ADG 10%, Marb 23%, CW 3%.

EPDs	
HB	168
GM	48
CED	10
BW	0.5
WW	70
YW	113
MK	25
ME	0
HPG	12
CEM	5
ST	16
MARB	0.51/17
YG	0.21/18
REA	-0.05/22

WESTPHAL  
31

## VGW MOUNTAINEER 983

BULL

Reg: 4142510 • VGW 983 • Clvd: 2/27/19 • 100% 1A

5L MTN SIGN 435-10Z

JACOBSON MOUTAINEER 5076

3498602 JACOBSON SARA 3071

BUF CRK PATRIOT M183

VGW PAT CHRSS 08100

1322281 VGW 386-CHRSS 0551

BW	DAM AGE	205 ADJ WT	PRJ SALE WT
83	11	685	1330

- 983 can add weaning weight, gain-ability and carcass quality to his calves. He's strong topped, dark red and will add performance and pounds. The winter got his tail, but not his grow and gain. He's an all-around herdsire prospect. His eleven-year-old dam is a member of the Chrss cow family. She is ten generations deep in one of our initial dam lines.
- VGW Cow family 10th generation female. MPPA 102.
- Top percentile EPD's: HB 24%, WW 10%, YW 8%, ADG 8%, CW 4%, FAT 18%.

EPDs	
HB	185
GM	48
CED	13
BW	-0.4
WW	69
YW	113
MK	24
ME	0
HPG	10
CEM	8
ST	18
MARB	0.29/18
YG	0.16/19
REA	-0.05/24

WESTPHAL  
34

## VGW MOUNTAINEER 9123

BULL

Reg: 4142718 • VGW 9123 • Clvd: 3/31/19 • 100% 1A

5L MTN SIGN 435-10Z

JACOBSON MOUTAINEER 5076

3498602 JACOBSON SARA 3071

VGW BRAVO 955

VGW VO-STAR 1110

1444926 VGW 5004-STAR 0971

BW	DAM AGE	205 ADJ WT	PRJ SALE WT
81	8	735	1205

- Born the last of March, 9123 is the youngest prospect we're offering. His Star dam is nine generations deep and he is top 3% in YW and ADG EPD's, with top 6% WW EPD. If you're looking for extra pounds at weaning, his thickness and carcass character can do just that. There's performance in all the Mountaineer 5076 sons.
- VGW Cow family 9th generation female. MPPA 101.
- Top percentile EPD's: WW 7%, YW 5%, ADG 5%, CW 5%.

EPDs	
HB	160
GM	48
CED	11
BW	0.1
WW	71
YW	115
MK	25
ME	-2
HPG	9
CEM	6
ST	16
MARB	0.44/17
YG	0.22/18
REA	-0.15/22

WESTPHAL  
32

## VGW MOUNTAINEER 9105

BULL

Reg: 4142822 • VGW 9105 • Clvd: 3/10/19 • 100% 1A

5L MTN SIGN 435-10Z

JACOBSON MOUTAINEER 5076

3498602 JACOBSON SARA 3071

5L HOT SHOT 2370-186A

VGW HS-FIREFLY 15107

3524644 VGW WK-FIREFLY 1184

BW	DAM AGE	205 ADJ WT	PRJ SALE WT
85	4	794	1310

- 9105 has a pedigree of both performance and maternal prowess. He has five performance and maternal category percentile EPD's in the top 2%-4% of the breed, including WW, YW, ADG, Milk and CW. It's hard to find more milk and maternal than this combination. His Firefly dam has a marvelous 110 MPPA, and she sold a bull by LJC Iceman in our 2019 sale.
- VGW Cow family 7th generation female. MPPA 110.
- Top percentile EPD's: WW 6%, YW 5%, ADG 7%, Milk 5%, CW 4%.

EPDs	
HB	163
GM	47
CED	10
BW	0.8
WW	72
YW	115
MK	29
ME	-2
HPG	11
CEM	6
ST	16
MARB	0.45/17
YG	0.22/18
REA	-0.08/22

WESTPHAL  
35

## VGW MOUNTAINEER 911P

BULL

Reg: 4142406 • VGW 911P • Clvd: 2/23/19 • 99.6% 1B

5L MTN SIGN 435-10Z

JACOBSON MOUTAINEER 5076

3498602 JACOBSON SARA 3071

PCHFRK PRIME 1323

VGW PRIME-RED P1512

3475884 VGW 2328 RED P0824

BW	DAM AGE	205 ADJ WT	PRJ SALE WT
89	4	761	1375

- 911P is full of extra length, as well as extra width. The kind you'll want for added dollar value in the cowherd. Don't miss this power-packed group of prospects – think about taking more than one Mountaineer son home. 911P has impressive top percentile EPD's in eight performance and carcass categories.
- VGW Cow family 6th generation female. MPPA 103.
- Top percentile EPD's: HB 24%, WW 6%, YW 6%, ADG 8%, Milk 21%, Stay 23%, Marb 18%, CW 2%.

EPDs	
HB	185
GM	48
CED	12
BW	-0.8
WW	71
YW	115
MK	26
ME	0
HPG	11
CEM	7
ST	18
MARB	0.54/18
YG	0.24/19
REA	-0.09/24

WESTPHAL  
33

## VGW MOUNTAINEER 973

BULL

Reg: 4142444 • VGW 973 • Clvd: 2/23/19 • 100% 1A

5L MTN SIGN 435-10Z

JACOBSON MOUTAINEER 5076

3498602 JACOBSON SARA 3071

5L DOUBLE DESIGN 1177-227W

VGW DD-STAR 1303

1630377 VGW 396V-STAR 1082

BW	DAM AGE	205 ADJ WT	PRJ SALE WT
81	6	753	1265

- 973 has a very smooth front and shoulder, along with thickness and considerable rib. The Mountaineer 5076 sons eliminate the guesswork on performance, and 937 will produce added pounds at weaning time. His dam is a second to none, ten-generation VGW Star female. Put him on your "watch for" list sale day.
- VGW Cow family 10th generation female. MPPA 106.
- Top percentile EPD's: WW 11%, YW 19%, Milk 4%, HPG 23%, CW 4%.

EPDs	
HB	163
GM	45
CED	12
BW	-0.5
WW	68
YW	105
MK	30
ME	-1
HPG	13
CEM	7
ST	16
MARB	0.38/19
YG	0.21/20
REA	-0.14/24

WESTPHAL  
36

## VGW MOUNTAINEER 920P

BULL

Reg: 4142404 • VGW 920P • Clvd: 3/30/19 • 99.9% 1B

5L MTN SIGN 435-10Z

JACOBSON MOUTAINEER 5076

3498602 JACOBSON SARA 3071

5L HOT SHOT 2370-186A

VGW HOT SHOT-RED P1510

3475880 VGW 554T-RED P1004

BW	DAM AGE	205 ADJ WT	PRJ SALE WT
71	4	717	1125

- 920P is a younger Mountaineer son that performed as well as any in the group. He grew to an impressive 717 lb. Adj WW from a light 71 lb. birth weight. He is twin to a bull.
- VGW Cow family 8th generation female. MPPA 99.
- Top percentile EPD's: HB 7%, WW 10%, YW 11%, ADG 17%, Marb 17%, Stay 7%.

EPDs	
HB	182
GM	49
CED	12
BW	-0.9
WW	65
YW	109
MK	25
ME	-3
HPG	11
CEM	6
ST	17
MARB	0.54/18
YG	0.22/19
REA	-0.11/22



**WESTPHAL**  
**37**

## VGW BUMPER CROP 974

BULL

Reg: 4142662 • VGW 974 • Clvd: 2/23/19 • 100% 1A

ANDRAS FUSION R236

**VGW BUMPER CROP 510**

**3475897** RED CROWFOOT PRINCENE 3222A

VGW MEGATRON 141

**VGW 141-INDIGO 13112**

**1630333** VGW 083-INDIGO 0689

BW	DAM AGE	205 ADJ WT	PRJ SALE WT
<b>86</b>	<b>6</b>	<b>665</b>	<b>1290</b>

EPDs	
HB	<b>153</b>
GM	<b>48</b>
CED	<b>11</b>
BW	<b>0.7</b>
WW	<b>59</b>
YW	<b>98</b>
MK	<b>27</b>
ME	<b>-5</b>
HPG	<b>12</b>
CEM	<b>6</b>
ST	<b>14</b>
MARB	<b>0.40/18</b>
YG	<b>0.13/18</b>
REA	<b>0.03/22</b>

- BUMPER CROP 974...It's hard to put all the needed adjectives in one note about this prospect. Typical of his sires' offspring, he's balanced with a strong, straight top, and all the muscle and completeness wanted in a herd sire. He's masculine, deep ribbed and showcases a deep thick lower quarter. Full of beef – look for him.
- VGW Cow family 5th generation female. MPPA 98.
- Top percentile EPD's: ADG 23%, Milk 19%, ME 18%.

**WESTPHAL**  
**38**

## VGW BUMPER CROP 977

BULL

Reg: 4142466 • VGW 977 • Clvd: 2/24/19 • 100% 1A

ANDRAS FUSION R236

**VGW BUMPER CROP 510**

**3475897** RED CROWFOOT PRINCENE 3222A

RED SSS OLY 554T

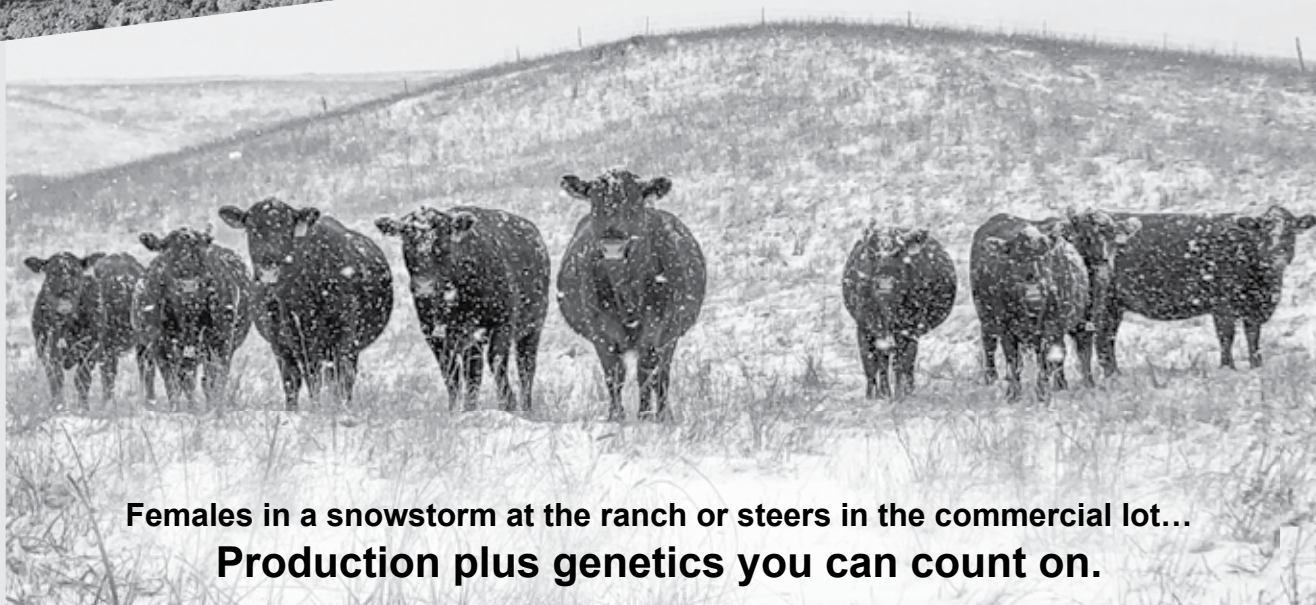
**VGW 554T-HAZY 1075**

**1412567** VGW NC-HAZY 0751

BW	DAM AGE	205 ADJ WT	PRJ SALE WT
<b>91</b>	<b>9</b>	<b>681</b>	<b>1280</b>

EPDs	
HB	<b>137</b>
GM	<b>48</b>
CED	<b>10</b>
BW	<b>0.5</b>
WW	<b>65</b>
YW	<b>107</b>
MK	<b>23</b>
ME	<b>-6</b>
HPG	<b>11</b>
CEM	<b>5</b>
ST	<b>12</b>
MARB	<b>0.43/18</b>
YG	<b>0.14/19</b>
REA	<b>0.01/23</b>

- BUMPER CROP 977 is a dark red, square standing, extra-long beef machine that's sure to be a solid front pasture prospect. He has a deep hindquarter, a tight sheath and straight topline. Buy Bumper Crop half-brothers; they'll work well together. Hazy 1075 sold a maternal half brother in our '19 Sale.
- VGW Cow family 6th generation female. MPPA 102.
- Top percentile EPD's: WW 20%, YW 16%, ADG 13%, ME 10%, CW 10%.



**Females in a snowstorm at the ranch or steers in the commercial lot...**  
**Production plus genetics you can count on.**

WESTPHAL  
39

## VGW COVER CROP 980

BULL

Reg: 4142694 • VGW 980 • Clvd: 2/26/19 • 100% 1A

ANDRAS FUSION R236

## VGW BUMPER CROP 510

3475897 RED CROWFOOT PRINCENE 3222A

MESSMER COLUMBIA W054

## VGW W054-MERCEDES 1215

1541890 VGW 396V-MERCEDES 1042

BW	DAM AGE	205 ADJ WT	PRJ SALE WT
70	7	758	1325

- Bumper Crop sons are terrific at turning grass into pounds, and 980 is one of the massive, thick, explosively-built, straight-lined beef machines in the offering. He has plentiful size, frame and a wide top. He stands wide and showcases the Bumper Crop genetic stamp. A maternal half brother sold in last year's sale.
- VGW Cow family 8th generation female. MPPA 106.
- Top percentile EPD's: WW 22%, ME 15%.

EPDs	
HB	145
GM	48
CED	12
BW	-0.8
WW	65
YW	100
MK	26
ME	-5
HPG	11
CEM	6
ST	13
MARB	0.47/18
YG	0.10/19
REA	0.00/23

WESTPHAL  
42

## VGW BUMPER CROP 9102

BULL

Reg: 4142674 • VGW 9102 • Clvd: 3/9/19 • 100% 1A

ANDRAS FUSION R236

## VGW BUMPER CROP 510

3475897 RED CROWFOOT PRINCENE 3222A

LARSON PALADIN 238

## VGW PAL-STAR 1596

3475952 VGW U099-STAR 1267

BW	DAM AGE	205 ADJ WT	PRJ SALE WT
86	4	673	1150

- 9102 is end-to-end red meat, just-right frame, and thickness from his clean front and deep down in his hindquarter. He has added length to put on extra pounds you look for when weighing your calves in the fall. His four-year-old dam is nine generations deep in the VGW Star line, with a daughter working in the herd, and a son selling in our 2019 sale.
- VGW Cow family 6th generation female. MPPA 103.
- Top percentile EPD's: GM 16%, WW 10%, YW 10%, ADG 13%, ME 14%.

EPDs	
HB	125
GM	46
CED	12
BW	0.4
WW	58
YW	87
MK	25
ME	-5
HPG	11
CEM	5
ST	12
MARB	0.35/18
YG	0.13/18
REA	-0.09/22

WESTPHAL  
40

## VGW BUMPER CROP 981

BULL

Reg: 4142868 • VGW 981 • Clvd: 2/27/19 • 100% 1A

ANDRAS FUSION R236

## VGW BUMPER CROP 510

3475897 RED CROWFOOT PRINCENE 3222A

VGW MERCY-MERCY 412

## VGW MER-STAR 1619

3554079 VGW U199-STAR 1235

BW	DAM AGE	205 ADJ WT	PRJ SALE WT
85	3	657	1220

- Think about buying more than one of the VGW Bumper Crop sons. They're correctly made beef machines with powerhouse genetics to add maternal productivity to your cowherd. 981 had a maternal half brother sell in last year's sale.
- VGW Cow family 9th generation female. MPPA 100.
- Top percentile EPD's: Milk 15%, ME 11%.

EPDs	
HB	150
GM	47
CED	11
BW	-0.2
WW	59
YW	95
MK	27
ME	-6
HPG	12
CEM	5
ST	14
MARB	0.41/18
YG	0.12/18
REA	-0.03/22

WESTPHAL  
43

## VGW BUMPER CROP 914P

BULL

Reg: 4142432 • VGW 914P • Clvd: 3/6/19 • 99.9% 1B

ANDRAS FUSION R236

## VGW BUMPER CROP 510

3475897 RED CROWFOOT PRINCENE 3222A

MESSMER COLUMBIA W054

## VGW W054-RED P1322

1630411 VGW S163-RED P1009

BW	DAM AGE	205 ADJ WT	PRJ SALE WT
90	6	734	1320

- 914P is a Bumper Crop son sure to garner attention. Easy to look at, form and function meet, and you'll get plenty of bull power for dollars spent on these 510 sons.
- VGW Cow family 10th generation female. MPPA 99.
- Top percentile EPD's: GM 23%, WW 13%, YW 15%, ADG 20%, ME 13%.

EPDs	
HB	157
GM	49
CED	11
BW	1.1
WW	69
YW	110
MK	23
ME	-6
HPG	12
CEM	4
ST	14
MARB	0.47/18
YG	0.12/18
REA	0.04/22

WESTPHAL  
41

## VGW BUMPER CROP 9101

BULL

Reg: 4142816 • VGW 9101 • Clvd: 3/9/19 • 100% 1A

ANDRAS FUSION R236

## VGW BUMPER CROP 510

3475897 RED CROWFOOT PRINCENE 3222A

JACOBSON ADVANTAGE 3156

## VGW ADV-DOLL 15102

3524639 VGW BL-DOLL 1141

BW	DAM AGE	205 ADJ WT	PRJ SALE WT
94	4	741	1280

- 9101 has outstanding correctness and phenotype you will appreciate in his steer calves you sell, and his heifers you retain. His stature is robust and full of beef. With a square stance and smooth structure, he's sure a powerhouse Bumper Crop son. A full brother was evaluated by everyone in the pens at last years sale, selling to a long-time customer.
- VGW Cow family 6th generation female. MPPA 103.
- Top percentile EPD's: WW 9%, YW 13%, ADG 22%, ME 11%, CW 21%.

EPDs	
HB	137
GM	48
CED	9
BW	2.3
WW	69
YW	109
MK	25
ME	-6
HPG	11
CEM	5
ST	13
MARB	0.44/17
YG	0.14/17
REA	-0.03/21



**VGW BUMPER CROP 510 -  
SIRE OF LOTS 37-43**



**LOT 44 - VGW NAVIGATOR 9115**

- What a heifer pasture prospect! Complete end-to-end, 9115 is a 3SCC Navigator son that is easy to look at. He's a dark red, dark faced, moderate sized, high performance prospect. His daughters will be fancy. A light 66 lb. birth weight spread to 759 lb. Adj WW. His 11-year-old Epic dam has a tremendous 109 MPPA. 9115 is in the top 1% for Milk & top 2% for HerdBuilder and Stay.
- VGW Cow family 5th generation female. MPPA 109.
- Top percentile EPD's: HB 2%, CED 24%, ADG 25%, Milk 1%, HPG 17%, Stay 2%.

**WESTPHAL**  
**44**

**VGW NAVIGATOR 9115****BULL**

Reg: 4142726 • VGW 9115 • Clvd: 3/26/19 • 100% 1A

VGW NAVIGATOR 010

**3SCC NAVIGATOR A448**

1648436 BSKF POLLY S208

BECKTON EPIC S163 K5

**VGW S163-INDIGO 0863**

1250315 VGW NC-INDIGO 0547

BW	DAMAGE	205 ADJ WT	PRJ SALE WT
66	11	759	1210

EPDs	
HB	218
GM	47
CED	14
BW	-2.0
WW	54
YW	93
MK	33
ME	-1
HPG	13
CEM	7
ST	22
MARB	0.41/22
YG	0.22/22
REA	-0.13/26

**WESTPHAL**  
**46**

**VGW NAVIGATOR 984****BULL**

Reg: 4142658 • VGW 984 • Clvd: 2/27/19 • 100% 1A

VGW NAVIGATOR 010

**3SCC NAVIGATOR A448**

1648436 BSKF POLLY S208

LSF BOXED BEEF 9063W

**VGW BB-STAR 1132**

1444807 VGW PT-STAR 0555

BW	DAMAGE	205 ADJ WT	PRJ SALE WT
83	8	634	1240

EPDs	
HB	200
GM	47
CED	12
BW	-1.8
WW	51
YW	85
MK	32
ME	-2
HPG	13
CEM	7
ST	20
MARB	0.44/23
YG	0.19/22
REA	-0.04/27

- This Navigator son is ranked in the top 1% for Milk, 6% for Stay and 11% HerdBuilder EPD's. His tremendous Boxed Beef dam has produced 3 other sale bulls, one retained female and a sale heifer. There is consistency in the A448 sons, with dense muscle and moderate size. His mother is a consistent producer and you'll love his heifers.
- VGW Cow family 8th generation female. MPPA 98.
- Top percentile EPD's: HB 9%, Milk 1%, HPG 20%, STAY 6%.

**WESTPHAL**  
**45**

**VGW NAVIGATOR 998****BULL**

Reg: 4142840 • VGW 998 • Clvd: 3/8/19 • 100% 1A

VGW NAVIGATOR 010

**3SCC NAVIGATOR A448**

1648436 BSKF POLLY S208

BECKTON NEW ERA B446 E2

**VGW NE-FIREFLY 1663**

3554109 VGW MOON-FIREFLY 1327

BW	DAMAGE	205 ADJ WT	PRJ SALE WT
65	3	621	1160

EPDs	
HB	182
GM	48
CED	13
BW	0.1
WW	63
YW	104
MK	29
ME	0
HPG	12
CEM	6
ST	17
MARB	0.39/20
YG	0.22/19
REA	-0.15/23

- Very eye appealing, Navigator 998 has a defined, smooth, long frame with square stance. His Firefly three-year-old dam has a 109 MPPA, and her 2018 son sold in last year's sale. Buy from a sire group that can sure add uniformity to your calf crop. If you need milk, here it is. He's a twin to a bull.
- VGW Cow family 7th generation female. MPPA 109.
- Top percentile EPD's: YW 20%, ADG 15%, Milk 6%.

**Thank you**

for your attendance and endorsement of  
**Westphal Red Angus.**

We are committed to pursuit of quality,  
problem-free, profitable Red Angus  
seedstock and commercial cattle.

WESTPHAL  
47

## VGW NAVIGATOR 969

BULL

Reg: 4142858 • VGW 969 • Clvd: 2/20/19 • 100% 1A

VGW NAVIGATOR 010

## 3SCC NAVIGATOR A448

1648436 BSKF POLLY S208

RED U-2 FOREIGNER 413B

## VGW FOR-FIREFLY 1621

3554149 VGW U199-FIREFLY 1446

BW	DAMAGE	205 ADJ WT	PRJ SALE WT
81	3	589	1255

- We like the moderation of size and impressive thickness in the Navigator A448 sons. Here's another of his "just-right" progeny. 969 carries definition of muscle in a smooth pattern with top 5% HerdBuilder EPD, along with six additional top percentile EPD's.
- VGW Cow family 6th generation female. MPPA 92.
- Top percentile EPD's: HB 5%, CED 23%, DMI 24%, Milk 10%, ME 17%, HPG 13%, Stay 9%.

EPDs	
HB	208
GM	48
CED	14
BW	-2.0
WW	54
YW	91
MK	28
ME	-5
HPG	14
CEM	7
ST	19
MARB	0.34/23
YG	0.14/20
REA	0.00/25

WESTPHAL  
50

## VGW RECKONING 990

BULL

Reg: 4142854 • VGW 990 • Clvd: 3/4/19 • 100% 1A

RED U-2 RECKONING 149A

## RED U-2 RECKONING 294C

2585268 RED U-2 LASSIE 16A

ANDRAS FUSION R236

## VGW FUS-STAR 1601

3554143 VGW MS-STAR 1438

BW	DAMAGE	205 ADJ WT	PRJ SALE WT
79	3	737	1310

- Take a look here! All we can say is wow...990 is herd bull material. Massive spring of rib, overall thickness, a strong wide topline, and loads of muscle are presented precisely on a square wide base. His eleven-generation Star family dam has a 110 WWR and 109 YWR on her first two sons.
- VGW Cow family 11th generation female. MPPA 105.
- Top percentile EPD's: YW 27%, ADG 19%, Milk 5%, ME 4%, CW 23%.

EPDs	
HB	170
GM	48
CED	11
BW	-1.1
WW	61
YW	101
MK	29
ME	-9
HPG	9
CEM	7
ST	16
MARB	0.37/18
YG	0.14/18
REA	0.05/22

WESTPHAL  
48

## VGW NAVIGATOR 964

BULL

Reg: 4142856 • VGW 964 • Clvd: 2/16/19 • 100% 1A

VGW NAVIGATOR 010

## 3SCC NAVIGATOR A448

1648436 BSKF POLLY S208

ANDRAS FUSION R236

## VGW FUS-DORA 1603

3554147 VGW GY-DORA 1444

BW	DAMAGE	205 ADJ WT	PRJ SALE WT
63	3	624	1195

- This dark red 3SCC Navigator son is short tailed, but definitely not short on quality. A favorite at the yard, he's moderately sized with a wide, straight topline. He's the kind of sire that can work in any harsh environment. His dam is a highly productive nine-generation Dora dam, and we retained her first heifer. 964 is twin to a heifer.
- VGW Cow family 9th generation female. MPPA 103.
- Top percentile EPD's: HB 13%, CED 17%, Milk 13%, CEM 13%.

EPDs	
HB	194
GM	48
CED	15
BW	-1.9
WW	57
YW	95
MK	27
ME	-2
HPG	12
CEM	9
ST	18
MARB	0.45/22
YG	0.18/20
REA	-0.13/24

WESTPHAL  
51

## VGW RECKONING 915P

BULL

Reg: 4142896 • VGW 915P • Clvd: 3/16/19 • 99.9% 1B

RED U-2 RECKONING 149A

## RED U-2 RECKONING 294C

2585268 RED U-2 LASSIE 16A

JACOBSON ADVANTAGE 3156

## VGW ADV-RED P1618

3554221 VGW U199-RED P1302

BW	DAMAGE	205 ADJ WT	PRJ SALE WT
86	3	719	1235

- 915P will be an easy find sale day. He fits the "look at" list with a long inventory of problem-free characteristics. He's impressive as he walks out easily across the lot. His grandsire, Reckoning 149A, is the \$46,000 U-2 Ranch herdsire. His Advantage-Red dam sold a top prospect in our sale last year.
- VGW Cow family 9th generation female. MPPA 101.
- Top percentile EPD's: Milk 9%, ME 5%.

EPDs	
HB	168
GM	47
CED	9
BW	0.8
WW	62
YW	98
MK	28
ME	-8
HPG	11
CEM	6
ST	17
MARB	0.35/17
YG	0.14/18
REA	-0.01/22

WESTPHAL  
49

## JKW 903 RINGMASTER

BULL

Reg: 4157484 • JKW 903 • Clvd: 2/7/19 • 100% 1A

RED U-2 RECKONING 149A

## RED U-2 RECKONING 294C

2585268 RED U-2 LASSIE 16A

BUF CRK THE RIGHT KIND U199

## VGW RK-DORA 1117

1444851 VGW TM-DORA 0758

BW	DAMAGE	205 ADJ WT	PRJ SALE WT
87	8	652	1300

- There's meat, muscle, volume and productivity all packed into JKW 903. The Red U-2 Reckoning sons carry on his consistent muscle shape, volume and vigor. RINGMASTER has a correct structure, and balanced-trait, high percentile EPD's. His Dora dam has two retained daughters, and sons sold in our last two sales.
- VGW Cow family 8th generation female. MPPA 99.
- Top percentile EPD's: HB 22%, ADG 15%, Milk 15%, ME 8%, Stay 20%, CW 25%.

EPDs	
HB	187
GM	48
CED	10
BW	-0.3
WW	58
YW	99
MK	27
ME	-7
HPG	11
CEM	7
ST	18
MARB	0.28/17
YG	0.13/19
REA	0.02/24



LOT 49 - JKW 903 RINGMASTER



WESTPHAL  
52

## VGW REVERED 926

BULL

Reg: 4142636 • VGW 926 • Clvd: 2/5/19 • 100% 1A

BECKTON DOMINOR T122 Z1

3SCC DOMAIN A163

1619642 3SCC EUCLA X723

5L BOURNE 117-48A

VGW BO-SARA 1736

3764669 VGW JO-SARA 1564

BW	DAM AGE	205 ADJ WT	PRJ SALE WT
74	2	740	1360

- REVERED 926 is impressive with the goods to breed heavy calves, and fancy replacement heifers. A wide-topped, expressively muscled prospect with large hip, and rib, and a sure-fire herd sire look. He's top 1% EPD for HerdBuilder, Stay and Marb. Out of a first calf heifer, he has a 74 lb. BW spread to a 740 lb. Adj WW. It's all here!!
- VGW Cow family 4th generation female. MPPA 103.
- Top percentile EPD's: HB 1%, GM 13%, WW 23%, Milk 16%, HPG 17%, Stay 1%, Marb 1%.

EPDs	
HB	231
GM	50
CED	14
BW	-1.6
WW	64
YW	101
MK	27
ME	0
HPG	13
CEM	6
ST	22
MARB	0.79/24
YG	0.22/22
REA	-0.05/27



LOT 52 - VGW REVERED 926

WESTPHAL  
53

## VGW SURE BET 947

BULL

Reg: 4142686 • VGW 947 • Clvd: 2/10/19 • 100% 1A

BECKTON DOMINOR T122 Z1

3SCC DOMAIN A163

1619642 3SCC EUCLA X723

BUF CRK PATRIOT M183

VGW PAT DOLL 08103

1322273 VGW BO-DOLL 0061

BW	DAM AGE	205 ADJ WT	PRJ SALE WT
81	11	715	1350

- The Domain A163 sons are easy fleshing and masculine with reliable feet and legs. SURE BET 947 has a smooth clean shoulder with depth and length of rib. He follows his sire type with a no-holes phenotype. EPD's in the top 1% Stay and Herdbuilder, with top 21% GridMaster, for profitable trait balance.
- VGW Cow family 4th generation female. MPPA 100.
- Top percentile EPD's: HB 1%, GM 21%, Stay 1%, Marb 25%.

EPDs	
HB	221
GM	49
CED	13
BW	0.2
WW	63
YW	100
MK	21
ME	3
HPG	9
CEM	7
ST	22
MARB	0.50/24
YG	0.16/22
REA	-0.02/27



LOT 53 - VGW SURE BET 947

WESTPHAL  
54

## JKW 901 ROYAL DOMAIN

BULL

Reg: 4157490 • JKW 901 • Clvd: 2/1/19 • 100% 1A

BECKTON DOMINOR T122 Z1

3SCC DOMAIN A163

1619642 3SCC EUCLA X723

5L BOURNE 117-48A

JKW 1701 CARMELLA

3793386 JKW 1501 R236 DOLLY

BW	DAM AGE	205 ADJ WT	PRJ SALE WT
73	2	665	1235

- 901 ROYAL DOMAIN is smooth sided with extra clean shoulders, on a square, wide base. Look at him for your heifer pastures. He's top 1% for HerdBuilder and top 2% for Stay and Marb. He, his dam and his sire, are each negative for BW EPD. His maternal grand-dam is dam of Lot 26.
- VGW Cow family 8th generation female. MPPA 100.
- Top percentile EPD's: HB 1%, GM 13%, CED 23%, HPG 22%, Stay 2%, Marb 2%.

EPDs	
HB	226
GM	50
CED	14
BW	-2.3
WW	59
YW	94
MK	24
ME	-2
HPG	13
CEM	6
ST	22
MARB	0.78/24
YG	0.21/23
REA	-0.14/27

3SCC DOMAIN A 163 -  
SIRE OF LOTS 52-61

WESTPHAL  
55

## VGW POLICY 961

BULL

Reg: 4142764 • VGW 961 • Clvd: 2/14/19 • 100% 1A

BECKTON DOMINOR T122 Z1

3SCC DOMAIN A163

1619642 3SCC EUCLA X723

5L RED TRADER 1416-396V

VGW 396V-FLOWER 1092

1412538 VGW PT- FLOWER 0292

BW	DAM AGE	205 ADJ WT	PRJ SALE WT
83	9	679	1280

- 3SCC Domain is a top HerdBuilder sire in the breed, with a 268 EPD value. He's also in the top 1% of the breed for Milk. His daughters are productive and can be high producing dams in your herd. POLICY 961 has balanced trait EPD's and the herd bull phenotype of his sire.
- VGW Cow family 5th generation female. MPPA 104.
- Top percentile EPD's: HB 17%, Milk 1%, Stay 7%, Marb 14%.

EPDs	
HB	191
GM	48
CED	11
BW	0.3
WW	58
YW	93
MK	32
ME	3
HPG	11
CEM	4
ST	20
MARB	0.57/22
YG	0.20/22
REA	-0.16/26

WESTPHAL  
58

## VGW DOMAIN 953

BULL

Reg: 4142504 • VGW 953 • Clvd: 2/12/19 • 100% 1A

BECKTON DOMINOR T122 Z1

3SCC DOMAIN A163

1619642 3SCC EUCLA X723

5L DOUBLE DESIGN 1177-227W

VGW DD- DORY 1206

1541875 VGW 554T-DORY 1006

BW	DAM AGE	205 ADJ WT	PRJ SALE WT
79	7	618	1185

- DOMAIN 953 will be on your favorite list sale day. The 3SCC Domain sons sport strong phenotypes, and 953 has a wide top and deep quarter. His sire's HerdBuilder, Stay, Gridmaster, and Marb EPD's are some of the best breed-wide.
- VGW Cow family 7th generation female. MPPA 98.
- Top percentile EPD's: HB 1%, CED 23%, Stay 1%, Marb 24%.

EPDs	
HB	221
GM	48
CED	13
BW	-1.9
WW	54
YW	87
MK	24
ME	2
HPG	13
CEM	5
ST	22
MARB	0.53/24
YG	0.19/22
REA	-0.15/27

WESTPHAL  
56

## VGW DOMAIN 912

BULL

Reg: 4142530 • VGW 912 • Clvd: 1/31/19 • 100% 1A

BECKTON DOMINOR T122 Z1

3SCC DOMAIN A163

1619642 3SCC EUCLA X723

RED U-2 FOREIGNER 413B

VGW FOR-INDIGO 1722

3764249 VGW RT-INDIGO 0817

BW	DAM AGE	205 ADJ WT	PRJ SALE WT
66	2	623	1305

- DOMAIN 912 is a light red colored sire prospect with a refined front, solid middle and quarter. He and his sire are in the top 1% of the breed for HerdBuilder and Stay EPD's. His dam, a first calf Foreigner daughter did a nice job, and he started out at a very modest 66 lb. BW. Consider using him in your heifer pasture.
- VGW Cow family 5th generation female. MPPA 96.
- Top percentile EPD's: HB 1%, CED 22%, ADG 23%, Milk 24%, HPG 25%, Stay 1%, Marb 20%.

EPDs	
HB	228
GM	49
CED	14
BW	-2.1
WW	57
YW	96
MK	26
ME	-1
HPG	12
CEM	6
ST	22
MARB	0.53/24
YG	0.19/21
REA	-0.02/26

WESTPHAL  
59

## VGW DOMAIN 902P

BULL

Reg: 4142654 • VGW 902P • Clvd: 1/30/19 • 99.9% 1B

BECKTON DOMINOR T122 Z1

3SCC DOMAIN A163

1619642 3SCC EUCLA X723

RED U-2 FOREIGNER 413B

VGW FOR-RED P1711

3764737 VGW 396V-RED P1023

BW	DAM AGE	205 ADJ WT	PRJ SALE WT
76	2	752	1410

- DOMAIN 902P is a block...square and thick all around. You don't find them thicker, and he has eight top percentile EPD's to go with his beef machine look. He had a 110 WWR and 105 YWR out of a first calf Red U-2 Foreigner dam. He deserves your evaluation sale morning.
- VGW Cow family 10th generation female. MPPA 104.
- Top percentile EPD's: HB 7%, WW 10%, YW 11%, ADG 17%, Milk 17%, Stay 7%, REA 23%.

EPDs	
HB	203
GM	49
CED	13
BW	-0.2
WW	69
YW	109
MK	27
ME	-1
HPG	11
CEM	5
ST	20
MARB	0.47/24
YG	0.15/21
REA	0.15/26

WESTPHAL  
57

## VGW DOMAIN 914

BULL

Reg: 4142524 • VGW 914 • Clvd: 2/1/19 • 100% 1A

BECKTON DOMINOR T122 Z1

3SCC DOMAIN A163

1619642 3SCC EUCLA X723

RED U-2 FOREIGNER 413B

VGW FOR-YUMA 1749

3764237 VGW RT-YUMA 07103

BW	DAM AGE	205 ADJ WT	PRJ SALE WT
71	2	681	1340

- The 3SCC Domain sons, like 914, carry his excellent top-of-the-breed EPD values for HerdBuilder and Stay, along with quiet dispositions, light to moderate birth weights and excellent phenotypes. We bred a number of first calf heifers to Domain A163 and are very satisfied with the birth weights and ease of calving.
- VGW Cow family 8th generation female. MPPA 100.
- Top percentile EPD's: HB 1%, CED 23%, Stay 1%, Marb 23%.

EPDs	
HB	222
GM	48
CED	14
BW	-1.6
WW	63
YW	100
MK	25
ME	-1
HPG	11
CEM	6
ST	22
MARB	0.51/24
YG	0.17/21
REA	0.02/26

WESTPHAL  
60

## VGW DOMAIN 904P

BULL

Reg: 4142802 • VGW 904P • Clvd: 2/6/19 • 99.9% 1B

BECKTON DOMINOR T122 Z1

3SCC DOMAIN A163

1619642 3SCC EUCLA X723

MONTVUE S008 PACKER X580

VGW X580-RED P1219

1541934 VGW PAT RED P0835

BW	DAM AGE	205 ADJ WT	PRJ SALE WT
88	7	663	1315

- The Montvue Packer-3SCC Domain mating sure looks great on this prospect. Take note of this wide based bull with ample frame, deep middle and broad topline. He walks out on a powerful set of legs and feet. The Domain A163 sons collectively have a number of top EPD values.
- VGW Cow family 8th generation female. MPPA 96.
- Top percentile EPD's: HB 3%, GM 11%, WW 25%, YW 18%, ADG 12%, Stay 2%, Marb 18%, CW 21%.

EPDs	
HB	215
GM	50
CED	12
BW	0.2
WW	64
YW	105
MK	22
ME	3
HPG	11
CEM	5
ST	21
MARB	0.54/22
YG	0.18/21
REA	0.06/26



WESTPHAL  
61

## VGW DOMAIN 907P

BULL

Reg: 4142574 • VGW 907P • Clvd: 2/7/19 • 99.9% 1B

BECKTON DOMINOR T122 Z1

3SCC DOMAIN A163

1619642

3SCC EUCLA X723

JACOBSON MOUTAINEER 5076

VGW MT-RED P1723

3764601

VGW MEG-RED P1415

BW	DAM AGE	205 ADJ WT	PRJ SALE WT
76	2	711	1365

- The Domain A163 sons as a sire group have consistency to sire correct phenotypes and add pounds to their calves. Their daughters will be kept for mother cows. 907P has an extra-wide top, strong feet and legs, and a ten-generation dam. She has eight top percentile EPD values, as does this son. There's superb value in this set of Domain sons.
- VGW Cow family 10th generation female. MPPA 102.
- Top percentile EPD's: HB 2%, GM 15%, WW 18%, YW 11%, ADG 7%, Stay 2%, Marb 10%, CW 8%.

EPDs	
HB	218
GM	49
CED	13
BW	-0.3
WW	66
YW	110
MK	24
ME	1
HPG	12
CEM	5
ST	21
MARB	0.61/22
YG	0.25/21
REA	-0.08/26



LOT 62 - VGW POWER TOOL 937

WESTPHAL  
62

## VGW POWER TOOL 937

BULL

Reg: 4142682 • VGW 937 • Clvd: 2/8/19 • 100% 1A

5L DEFENDER 560-30Z

5L THE REAL DEAL 1687-143B

1701634

5L FIREFLY 275-1687

SIX MILE WHEAT KING 810W

VGW WK-DORY 1189

1444937

VGW DORY-LIGHT 9705

BW	DAM AGE	205 ADJ WT	PRJ SALE WT
90	8	767	1360

- POWER TOOL 937 is a long-sided, correct structured The Real Deal prospect. He has ample thickness and depth with a robust hip and quarter. Correct on his feet and legs, he moves out well when you watch him walk. He's a top percentile EPD sire in seven performance and carcass traits.
- VGW Cow family 5th generation female. MPPA 102.
- Top percentile EPD's: WW 9%, YW 9%, ADG 9%, ME 12%, YG 19%, REA 24%, FAT 17%.

EPDs	
HB	149
GM	47
CED	9
BW	1.5
WW	69
YW	111
MK	24
ME	-6
HPG	11
CEM	5
ST	14
MARB	0.39/23
YG	0.05/21
REA	0.14/26

WESTPHAL  
63

## JKW 905 DANDY DEAL

BULL

Reg: 4157498 • JKW 905 • Clvd: 2/10/19 • 100% 1A

5L DEFENDER 560-30Z

5L THE REAL DEAL 1687-143B

1701634

5L FIREFLY 275-1687

TR JUBILATION XT009

JKW MC-JUB DOLLY

1629501

MC DOLLI1172

BW	DAM AGE	205 ADJ WT	PRJ SALE WT
84	6	712	1360

- DANDY DEAL 905 carries the mass and stylish phenotype of his sire. He's dense and solid, with a thick, square, smooth quarter, and long side. Performance and carcass value in his calves is bred in from both sire and dam. His MC-Jub Dolly dam has two daughters retained in the herd.
- VGW Cow family 8th generation female. MPPA 103.
- Top percentile EPD's: GM 9%, WW 19%, YW 8%, ADG 3%, Milk 24%, ME 23%, Marb 20%.

EPDs	
HB	178
GM	50
CED	14
BW	-1.2
WW	66
YW	112
MK	26
ME	-4
HPG	11
CEM	7
ST	16
MARB	0.53/24
YG	0.08/21
REA	0.10/27



LOT 64 - VGW FORCE 927

WESTPHAL  
64

## VGW FORCE 927

BULL

Reg: 4142768 • VGW 927 • Clvd: 2/6/19 • 100% 1A

5L DEFENDER 560-30Z

5L THE REAL DEAL 1687-143B

1701634

5L FIREFLY 275-1687

VGW GOOD YEAR 213

VGW GY-INDIGO 1439

1696269

VGW T376-INDIGO 1041

BW	DAM AGE	205 ADJ WT	PRJ SALE WT
84	5	681	1295

- The first thing you'll notice is the wide back on FORCE 927. At second glance you see his massive spring of rib and moderate frame. This guy packs pounds of red meat from front to rear. Follow him in the pen, and add him to the list of easy doing, easy moving prospects to add to your bull battery.
- VGW Cow family 5th generation female. MPPA 103.
- Top percentile EPD's: YW 23%, ADG 14%, CW 22%, FAT 23%.

EPDs	
HB	160
GM	48
CED	12
BW	-0.2
WW	61
YW	103
MK	25
ME	0
HPG	12
CEM	8
ST	15
MARB	0.46/24
YG	0.08/22
REA	0.06/27

WESTPHAL  
65

## VGW REAL DEAL 923

BULL

Reg: 4142440 • VGW 923 • Clvd: 2/5/19 • 100% 1A

5L DEFENDER 560-30Z

5L THE REAL DEAL 1687-143B

1701634 5L FIREFLY 275-1687

REDHILL B571 JULIAN 1W

VF 1W C359-121

3515083 LARSON LADY KATYA 121-8104

BW	DAM AGE	205 ADJ WT	PRJ SALE WT
88	4	682	1395

- The Real Deal sons follow the same pattern, and REAL DEAL 923 is one of his larger framed in the offering. His smooth shoulder is just the start. He has extra long side and hip. Put him on the list for bulls to add pounds of red meat and carcass quality to their calves. His dam was selected to begin a new cow family in our herd.
- VF Red Angus bred dam. MPPA 100.
- Top percentile EPD's: GM 16%, WW 14%, YW 6%, ADG 2%, CW 15%.

EPDs	
HB	165
GM	49
CED	12
BW	-0.4
WW	67
YW	115
MK	25
ME	-3
HPG	11
CEM	6
ST	15
MARB	0.47/27
YG	0.15/23
REA	0.01/27

WESTPHAL  
68

## VGW IMPACT 956

BULL

Reg: 4142770 • VGW 956 • Clvd: 2/12/19 • 100% 1A

5L DEFENDER 560-30Z

5L THE REAL DEAL 1687-143B

1701634 5L FIREFLY 275-1687

BECKTON EPIC S163 K5

VGW S163-FIREFLY 1014

1374379 VGW PI-FIREFLY 0840

BW	DAM AGE	205 ADJ WT	PRJ SALE WT
89	9	724	1450

- Ready to be an impact sire, IMPACT 956 is massive, extra long and thick. Here's performance plus from the Real Deal sire, and tremendous HerdBuilder statistics from the Beckton Epic-Firefly dam line. 956 is the second highest Adj. YW prospect in the offering and has ADG EPD in the top 1%.
- VGW Cow family 6th generation female. MPPA 100.
- Top percentile EPD's: GM 4%, WW 9%, YW 2%, ADG 1%, Marb 11%, CW 16%, REA 24%.

EPDs	
HB	158
GM	51
CED	10
BW	1.3
WW	70
YW	121
MK	24
ME	-3
HPG	11
CEM	5
ST	14
MARB	0.60/24
YG	0.10/22
REA	0.14/27

WESTPHAL  
66

## VGW INDEED 933

BULL

Reg: 4142806 • VGW 933 • Clvd: 2/6/19 • 100% 1A

5L DEFENDER 560-30Z

5L THE REAL DEAL 1687-143B

1701634 5L FIREFLY 275-1687

LARSON PALADIN 238

VGW PAL-CHRSS 1478

1696297 VGW 905-CHRSS 11103

BW	DAM AGE	205 ADJ WT	PRJ SALE WT
91	5	722	1445

- INDEED 933 - What a bull! His massive body and rib are as deep as any in the offering. You want pounds at weaning and you want grass converters. 933's sons will push the scales down. We have retained two daughters out of his CHRSS dam, and one half sister sold in our 2018 sale. How can you go wrong with a ten-generation dam?
- VGW Cow family 10th generation female. MPPA 101.
- Top percentile EPD's: GM 14%, WW 7%, YW 3%, ADG 2%, CW 8%, REA 24%, FAT 21%.

EPDs	
HB	150
GM	50
CED	12
BW	0.7
WW	71
YW	119
MK	21
ME	-3
HPG	10
CEM	8
ST	12
MARB	0.47/24
YG	0.09/22
REA	0.14/27

WESTPHAL  
69

## VGW REAL DEAL 932

BULL

Reg: 4142720 • VGW 932 • Clvd: 2/6/19 • 100% 1A

5L DEFENDER 560-30Z

5L THE REAL DEAL 1687-143B

1701634 5L FIREFLY 275-1687

BUF CRK THE RIGHT KIND U199

VGW U199- INDIGO 1279

1597868 VGW PAT-INDIGO 0923

BW	DAM AGE	205 ADJ WT	PRJ SALE WT
86	7	653	1170

- Here's an easy moving bull with plentiful rib and a moderate frame. REAL DEAL 932 fits well with the sire's progeny group. His dam is a feminine, good milking Buf Crk The Right Kind-Indigo cow.
- VGW Cow family 5th generation female. MPPA 97.
- Top percentile EPD's: ME 22%, YG 25%, FAT 11%.

EPDs	
HB	149
GM	46
CED	12
BW	-0.3
WW	58
YW	90
MK	26
ME	-4
HPG	11
CEM	7
ST	14
MARB	0.45/24
YG	0.06/23
REA	-0.05/27

WESTPHAL  
67

## VGW REAL DEAL 948

BULL

Reg: 4142486 • VGW 948 • Clvd: 2/10/19 • 100% 1A

5L DEFENDER 560-30Z

5L THE REAL DEAL 1687-143B

1701634 5L FIREFLY 275-1687

VGW MEGATRON 141

VGW MEG-FIREFLY 1494

1696286 VGW 396V-FIREFLY 1085

BW	DAM AGE	205 ADJ WT	PRJ SALE WT
89	5	628	1345

- An extra long prospect, Real Deal 948 strides out in the pen with smooth movement. You'll note his eye-catching phenotype and there's performance plus in his genetics. Take home any of the Real Deal sons – every one can do a great job in your pastures.
- VGW Cow family 8th generation female. MPPA 97.
- Top percentile EPD's: GM 9%, WW 25%, YW 8%, ADG 2%, Marb 11%, CW 7%.

EPDs	
HB	159
GM	50
CED	11
BW	0.8
WW	64
YW	112
MK	23
ME	-3
HPG	11
CEM	7
ST	14
MARB	0.60/24
YG	0.13/22
REA	0.05/27

WESTPHAL  
70

## VGW REAL DEAL 903P

BULL

Reg: 4142402 • VGW 903P • Clvd: 2/2/19 • 99.8% 1B

5L DEFENDER 560-30Z

5L THE REAL DEAL 1687-143B

1701634 5L FIREFLY 275-1687

RED SSS OLY 554T

VGW 554T-RED P1004

1374450 VGW S163 RED P0818

BW	DAM AGE	205 ADJ WT	PRJ SALE WT
79	9	749	1425

- Here's a prospect that's thick bodied, with depth end to end. 903P is a top prospect with a square quarter and wide back. He's sure easy to find at the lot. His numbers fit his quality with seven performance and carcass category top percentile EPD's.
- VGW Cow family 7th generation female. MPPA 101.
- Top percentile EPD's: GM 17%, WW 14%, YW 7%, ADG 4%, ME 16%, Marb 13%, CW 14%.

EPDs	
HB	178
GM	49
CED	14
BW	-1.7
WW	67
YW	113
MK	24
ME	-5
HPG	10
CEM	8
ST	16
MARB	0.58/25
YG	0.11/24
REA	0.06/29



WESTPHAL  
71

## VGW REAL DEAL 908P

BULL

Reg: 4142696 • VGW 908P • Clvd: 2/7/19 • 99.9% 1B

5L DEFENDER 560-30Z

5L THE REAL DEAL 1687-143B

1701634 5L FIREFLY 275-1687

LARSON PALADIN 238

VGW PAL-RED P1507

3475866 VGW U199-RED P1302

BW	DAM AGE	205 ADJ WT	PRJ SALE WT
94	4	686	1390

- REAL DEAL 908P showcases loads of quality, a lighter red color and stocky, deep build. Performance and carcass traits are abundant in his seven-category breed leading EPD percentages.
- VGW Cow family 9th generation female. MPPA 104.
- Top percentile EPD's: GM 17%, WW 14%, YW 7%, ADG 4%, ME 16%, Marb 13%, CW 14%.

EPDs	
HB	150
GM	50
CED	11
BW	1.4
WW	70
YW	115
MK	24
ME	-4
HPG	11
CEM	7
ST	13
MARB	0.49/25
YG	0.09/22
REA	0.08/27



LOT 72 - VGW GLOBAL 943

WESTPHAL  
73

## VGW PIONEER 941

BULL

Reg: 4142462 • VGW 941 • Clvd: 2/9/19 • 100% 1A

PIE CINCH 4126

RRS PIONEER 6904

3585350 BASIN PRIMROSE 0T43

BUF CRK THE RIGHT KIND U199

VGW U199-YUMA 1280

1597853 VGW MARK-YUMA 06105

BW	DAM AGE	205 ADJ WT	PRJ SALE WT
93	7	728	1340

- If you're looking for frame and pounds in your feeder calves, PIONEER 941 is bred for size, length and growth. Here's extension, performance and fertility ready to go to work in the pasture. His dam has had three sons and one daughter sell for us. Consistency and production are bred in.
- VGW Cow family 9th generation female. MPPA 99.
- Top percentile EPD's: WW 19%, Milk 17%.

EPDs	
HB	176
GM	48
CED	9
BW	0.7
WW	66
YW	98
MK	27
ME	0
HPG	12
CEM	6
ST	18
MARB	0.46/23
YG	0.17/22
REA	-0.19/26



LOT 74 - VGW PIONEER 949

WESTPHAL  
72

## VGW GLOBAL 943

BULL

Reg: 4142722 • VGW 943 • Clvd: 2/9/19 • 100% 1A

PIE CINCH 4126

RRS PIONEER 6904

3585350 BASIN PRIMROSE 0T43

5L SMOKE SIGNAL 756-176V

VGW SS-STAR 1348

1630355 VGW JUL-STAR 0932

BW	DAM AGE	205 ADJ WT	PRJ SALE WT
91	6	724	1390

- GLOBAL 943 is a tremendous herd sire prospect. Start any "look at to buy" list with this RReds Pioneer 6904 son. Like his sire, he has incredible phenotype and muscle shape. His Star dam has three daughters retained in herd, and her Fusion son sold several years ago to Barenthsen Red Angus in North Dakota.
- VGW Cow family 7th generation female. MPPA 104.
- Top percentile EPD's: WW 7%, YW 14%, Milk 13%, HPG 5%.

EPDs	
HB	174
GM	48
CED	11
BW	0.2
WW	71
YW	108
MK	28
ME	2
HPG	15
CEM	5
ST	16
MARB	0.43/22
YG	0.13/22
REA	0.03/26

WESTPHAL  
74

## VGW PIONEER 949

BULL

Reg: 4142516 • VGW 949 • Clvd: 2/11/19 • 100% 1A

PIE CINCH 4126

RRS PIONEER 6904

3585350 BASIN PRIMROSE 0T43

BUF CRK THE RIGHT KIND U199

VGW U199-STAR 1284

1597863 VGW RT-STAR 0798

BW	DAM AGE	205 ADJ WT	PRJ SALE WT
85	7	693	1350

- RReds Pioneer 6904 stamps his sons with herd sire profile and PIONEER 949 is patterned just like him. This deep flanked prospect is complete from end to end, with zero faults. He has a long head with a wide top and deep thick quarter and stand wide and square. His dam is a productive strong milking U199-Star daughter.
- VGW Cow family 8th generation female. MPPA 98.
- Top percentile EPD's: WW 22%, Milk 15%, Marb 25%.

EPDs	
HB	176
GM	49
CED	11
BW	-0.9
WW	65
YW	100
MK	27
ME	0
HPG	12
CEM	7
ST	17
MARB	0.50/23
YG	0.17/22
REA	-0.15/26

WESTPHAL  
75

## VGW SENATOR 929

BULL

Reg: 4142478 • VGW 929 • Clvd: 2/6/19 • 100% 1A

PIE CINCH 4126

RREDS PIONEER 6904

3585350 BASIN PRIMROSE 0T43

BUF CRK THE RIGHT KIND U199

VGW U199-DORY 1358

1630442 VGW R667-DORY 0812

BW	DAM AGE	205 ADJ WT	PRJ SALE WT
88	6	659	1260

- SENATOR 929 is stylish, with a straight, wide top. His masculine presence showcases his easy doing ability. He has a Right Kind U199-Dory dam nine generations deep in VGW history, and top percentile EPD's in GM, YW, ADG, ME and HPG. Performance goes deep in this bull.
- VGW Cow family 9th generation female. MPPA 102.
- Top percentile EPD's: Milk 14%, HPG 22%.

EPDs	
HB	171
GM	47
CED	10
BW	-0.5
WW	60
YW	91
MK	27
ME	0
HPG	13
CEM	6
ST	17
MARB	0.38/22
YG	0.14/22
REA	-0.15/26

WESTPHAL  
78

## VGW RECRUIT 921

BULL

Reg: 4142590 • VGW 921 • Clvd: 2/3/19 • 100% 1A

5L TOPGUN 560-65B

LJC ICEMAN 411D

3543821 LJC LACIE 411

RED U-2 RECKONING 294C

VGW RECK-DORY 17105

3764397 VGW U199-DORY 1220

BW	DAM AGE	205 ADJ WT	PRJ SALE WT
71	2	710	1295

- The sire, LJC Iceman 411D is a long sided, big quartered herd bull that passes these traits along to his sons. RECRUIT 921 is top four percentile in YW, ADG and CW and top 6% WW. He carries this top performance from both sides, including his first calf heifer Red U-2 Reckoning daughter.
- VGW Cow family 9th generation female. MPPA 102.
- Top percentile EPD's: WW 10%, YW 11%, ADG 15%, CW 9%.

EPDs	
HB	162
GM	48
CED	13
BW	-1.2
WW	69
YW	110
MK	22
ME	-3
HPG	12
CEM	8
ST	14
MARB	0.43/22
YG	0.22/21
REA	-0.11/25

WESTPHAL  
76

## VGW PIONEER 931

BULL

Reg: 4142668 • VGW 931 • Clvd: 2/6/19 • 100% 1A

PIE CINCH 4126

RREDS PIONEER 6904

3585350 BASIN PRIMROSE 0T43

5L HOT SHOT 2370-186A

VGW HS-HAZY 1533

3476043 VGW 508-HAZY 0832

BW	DAM AGE	205 ADJ WT	PRJ SALE WT
83	4	678	1165

- Here's a smaller statured son of RReds Pioneer 6904, whose dam is Basin Primrose 0T43, a cow family known for superior fertility. His dam has sold sons in our past two sales. All the Pioneer sons have an easy doing look and move out easily in the lot. PIONEER 931 is ready to go to work.
- VGW Cow family 6th generation female. MPPA 98.
- Top percentile EPD's: Milk 13%, Stay 22%, Marb 23%.

EPDs	
HB	171
GM	46
CED	10
BW	-0.3
WW	56
YW	81
MK	28
ME	2
HPG	12
CEM	6
ST	18
MARB	0.51/20
YG	0.13/21
REA	-0.10/25

WESTPHAL  
79

## VGW ESSENTIAL 934

BULL

Reg: 4142434 • VGW 934 • Clvd: 2/7/19 • 100% 1A

5L TOPGUN 560-65B

LJC ICEMAN 411D

3543821 LJC LACIE 411

BASIN FUTURE DIRECTION 7013

VGW 7013-STAR 0948

1321974 VGW TRAV-STAR 0512

BW	DAM AGE	205 ADJ WT	PRJ SALE WT
89	10	787	1420

- LJC Iceman 411D is a moderate sized herdsire with red meat and muscle mass in abundance. He is amazingly deep barreled with a wide top and hindquarter. Following in his sires' footsteps, ESSENTIAL 934 is a long, long prospect with impressive style and loads of muscle and red meat. Out of a Star family first calf heifer with an impressive 106 MPPA.
- VGW Cow family 6th generation female. MPPA 106.
- Top percentile EPD's: WW 3%, YW 6%, ADG 19%, CW 24%.

EPDs	
HB	145
GM	48
CED	10
BW	1.2
WW	75
YW	115
MK	20
ME	4
HPG	12
CEM	7
ST	13
MARB	0.42/21
YG	0.19/21
REA	0.01/25

WESTPHAL  
77

## VGW SOLDIER 919

BULL

Reg: 4142650 • VGW 919 • Clvd: 2/3/19 • 100% 1A

5L TOPGUN 560-65B

LJC ICEMAN 411D

3543821 LJC LACIE 411

BIEBER GLADIATOR C386

VGW GD-KATYA 1701

3764719 VF CONQ C363-685S

BW	DAM AGE	205 ADJ WT	PRJ SALE WT
78	2	796	1450

- SOLDIER 919 leads off the Iceman 411D sons with tremendous EPD's of top 1% of the breed in WW and YW, and top 3% in ADG and CW. Carcass traits, meat, muscle and GridMaster qualities combine for performance packed calves. 919 has a tremendous 796 lb. Adj WW with a 116 WWR.
- VGW Cow family 2nd generation female. MPPA 106.
- Top percentile EPD's: GM 9%, WW 1%, YW 1%, ADG 3%, Marb 13%, CW 3%.

EPDs	
HB	155
GM	50
CED	13
BW	-1.2
WW	81
YW	128
MK	20
ME	3
HPG	11
CEM	8
ST	13
MARB	0.58/23
YG	0.18/22
REA	0.08/26

WESTPHAL  
80

## VGW HIGHMARK 962

BULL

Reg: 4142794 • VGW 962 • Clvd: 2/15/19 • 100% 1A

5L TOPGUN 560-65B

LJC ICEMAN 411D

3543821 LJC LACIE 411

5L DOUBLE DESIGN 1177-227W

VGW DD-ANK 1239

1541755 VGW CAL-ANK 0464

BW	DAM AGE	205 ADJ WT	PRJ SALE WT
78	7	726	1315

- HIGHMARK 962 is another of the strong Iceman sons we're offering. He shows loads of extension that will carry through to his sons and daughters, along with his square, deep hip and quarter. With a 78 lb. birth weight spread to a 726 lb. Adj WW, his steers will weigh heavy at your load-out.
- VGW Cow family 5th generation female. MPPA 98.
- Top percentile EPD's: WW 11%, HPG 13%, CEM 22%.

EPDs	
HB	165
GM	46
CED	13
BW	-0.9
WW	68
YW	101
MK	18
ME	2
HPG	14
CEM	8
ST	15
MARB	0.36/22
YG	0.15/21
REA	-0.09/25



WESTPHAL  
81

## VGW PREFERRED 928

BULL

Reg: 4142512 • VGW 928 • Clvd: 2/6/19 • 100% 1A

5L TOPGUN 560-65B

LJC ICEMAN 411D

3543821 LJC LACIE 411

RED SSS OLY 554T

VGW OLY-YUMA 1156

1444897 VGW S163-YUMA 0877

BW	DAM AGE	205 ADJ WT	PRJ SALE WT
84	8	655	1375

- PREFERRED 928 is a moderate sized, square end-to-end, massive prospect. His calves will be the kind that feeders look for, with thick tops and massive capacity. His Red SSS Oly 554T-Yuma dam has four females retained in herd and sold sons in our past two sales.

- VGW Cow family 8th generation female. MPPA 98.

- Top percentile EPD's: GM 7%, WW 13%, YW 5%, ADG 2%, CEM 22%, CW 9%.

EPDs	
HB	169
GM	50
CED	13
BW	-1.9
WW	68
YW	116
MK	20
ME	-1
HPG	11
CEM	8
ST	14
MARB	0.47/23
YG	0.21/21
REA	-0.05/26

WESTPHAL  
84

## VGW ICE MAN 960

BULL

Reg: 4142452 • VGW 960 • Clvd: 2/14/19 • 100% 1A

5L TOPGUN 560-65B

LJC ICEMAN 411D

3543821 LJC LACIE 411

VGW MEGATRON 141

VGW 141-DORA 1561

3476050 VGW R667-DORA 0813

BW	DAM AGE	205 ADJ WT	PRJ SALE WT
78	4	644	1250

- The Iceman sons are each one more commanding than the next. The Megatron-Dora dam of ICE MAN 960 has a daughter retained in the herd, and a son sold in last years' sale. Like many of the females in the herd, DORA 1561 adds genetically sound improvement through the exciting performance of her sons and daughters.

- VGW Cow family 8th generation female. MPPA 96.

- Top percentile EPD's: WW 23%, YW 20%, ADG 19%, HPG 15%, CW 17%.

EPDs	
HB	174
GM	48
CED	12
BW	-0.7
WW	64
YW	104
MK	20
ME	2
HPG	13
CEM	7
ST	16
MARB	0.44/22
YG	0.19/21
REA	-0.02/26

WESTPHAL  
82

## VGW ICE MAN 922

BULL

Reg: 4142618 • VGW 922 • Clvd: 2/4/19 • 100% 1A

5L TOPGUN 560-65B

LJC ICEMAN 411D

3543821 LJC LACIE 411

JACOBSON MOUTAINEER 5076

VGW MT-STAR 1779

3764511 VGW MOON-STAR 1313

BW	DAM AGE	205 ADJ WT	PRJ SALE WT
66	2	624	1230

- This eight category top percentile EPD prospect has the opposing values of CED-BW and WW-YW-ADG in the mix. That speaks well for the all-around sire potential of ICE MAN 922. He'll breed heavy feeder calves and heifers you'll retain in the herd.

- VGW Cow family 9th generation female. MPPA 96.

- Top percentile EPD's: CED 15%, BW 21%, WW23%, YW 25%, HPG 23%, CEM 17%, Marb 25%, CW 22%.

EPDs	
HB	160
GM	47
CED	15
BW	-2.8
WW	64
YW	102
MK	20
ME	0
HPG	13
CEM	9
ST	14
MARB	0.50/22
YG	0.20/20
REA	-0.15/24

WESTPHAL  
85

## VGW ICE MAN 909P

BULL

Reg: 4142446 • VGW 909P • Clvd: 2/11/19 • 99.9% 1B

5L TOPGUN 560-65B

LJC ICEMAN 411D

3543821 LJC LACIE 411

VGW GOOD YEAR 213

VGW GY-RED P1411

1696388 VGW WAR-RED P0932

BW	DAM AGE	205 ADJ WT	PRJ SALE WT
80	5	716	1425

- Powerful and solid, 909P completes his standout status with eye appeal, mass and high-powered frame. His VGW Good Year x Red dam is a nine-generation female in the herd. A heifer and bull sold in past sales and we have a daughter in-herd.

- VGW Cow family 9th generation female. MPPA 101.

- Top percentile EPD's: GM 21%, WW 4%, YW 4%, ADG 5%, HPG 23%, CW 11%.

EPDs	
HB	169
GM	49
CED	13
BW	-0.5
WW	73
YW	118
MK	21
ME	3
HPG	13
CEM	8
ST	15
MARB	0.31/22
YG	0.16/20
REA	0.05/24

WESTPHAL  
83

## VGW ICE MAN 939

BULL

Reg: 4142400 • VGW 939 • Clvd: 2/8/19 • 100% 1A

5L TOPGUN 560-65B

LJC ICEMAN 411D

3543821 LJC LACIE 411

HXC INVADER 1104Y

VGW 1104Y-FLOWER 1375

1630535 VGW S163-FLOWER 1016

BW	DAM AGE	205 ADJ WT	PRJ SALE WT
86	6	612	1315

- 939 is a smooth, long balanced son of Iceman 411D. You can buy this kind of bull all day and be more excited when you get him home. He will be a complete all-around sire with moderate frame. His HXC Invader-Flower dam is the mother of VGW Direct Drive 512, that sold to Gateway Simmental & Erika Kenner in our 2016 sale. Her 2015 son is highlighted in box to the right.

- VGW Cow family 7th generation female. MPPA 96.

- Top percentile EPD's: GM 6%, WW 25%, YW 10%, ADG 3%, Marb 20%, CW 24%.

EPDs	
HB	168
GM	51
CED	12
BW	-1.3
WW	64
YW	111
MK	19
ME	2
HPG	11
CEM	7
ST	14
MARB	0.53/24
YG	0.22/22
REA	-0.15/27

## From one top seller to another...

With the purchase of VGW Direct Drive 512, the high selling bull in our 2016 sale, a set of Lucky Cross females were bred by Gateway Simmental, Lewistown, MT. A daughter of 512 recently had the high selling sire prospect in the Gateway Sale, selling to ABS Global. Here are generations of cow power at work. Congratulations to Gateway!

WESTPHAL  
86

## VGW BOURNE FIRE 9111

BULL

Reg: 4142852 • VGW 9111 • Clvd: 3/19/19 • 100% 1A

5L BOURNE 117-48A

5L BOURNE FIRE 5353-52C

3483367 5L HAZEL 2766-5353

BECKTON ACCENT B468 N3

VGW ACC-MERCEDES 1665

3554138 VGW SS-MERCEDES 1411

BW	DAM AGE	205 ADJ WT	PRJ SALE WT
88	3	786	1325

- Smooth patterned, much like his sire, 9111 is long and balanced. He has a dark face and straight, wide top with a 115 WWR. His Mercedes dam is ten generations deep in VGW bloodlines. She is breed top percentile in Milk 7%, BW 13%, CED 18% and HB 23%. Retain his daughters to utilize the maternal character for generations.
- VGW Cow family 10th generation female. MPPA 104.
- Top percentile EPD's: YW 22%, ADG 21%, HPG 5%, Marb 18%.

EPDs	
HB	171
GM	48
CED	8
BW	-0.1
WW	64
YW	103
MK	26
ME	-1
HPG	15
CEM	2
ST	17
MARB	0.54/17
YG	0.13/18
REA	0.08/22

WESTPHAL  
89

## VGW BOURNE FIRE 919P

BULL

Reg: 4142902 • VGW 919P • Clvd: 3/26/19 • 99.9% 1B

5L BOURNE 117-48A

5L BOURNE FIRE 5353-52C

3483367 5L HAZEL 2766-5353

BECKTON ACCENT B468 N3

VGW ACCENT P1615

3554241 VGW X580-RED P1419

BW	DAM AGE	205 ADJ WT	PRJ SALE WT
80	3	682	1155

- BOURNE FIRE 919P goes on every "take a look" list that needs a smooth sided, multi-use sire prospect. He's bred to be a top female producer, as well as adding pounds to his feeder calves. He has a square quarter and hip, and is easy to look at.
- VGW Cow family 9th generation female. MPPA 98.
- Top percentile EPD's: HPG 7%, STAY 16%.

EPDs	
HB	180
GM	47
CED	9
BW	-0.7
WW	59
YW	96
MK	24
ME	-1
HPG	15
CEM	3
ST	19
MARB	0.38/16
YG	0.10/18
REA	0.11/22

WESTPHAL  
87

## VGW BOURNE FIRE 976

BULL

Reg: 4142826 • VGW 976 • Clvd: 2/23/19 • 100% 1A

5L BOURNE 117-48A

5L BOURNE FIRE 5353-52C

3483367 5L HAZEL 2766-5353

JACOBSON ADVANTAGE 3156

VGW ADV-STAR 15111

3524650 VGW BL-STAR 1137

BW	DAM AGE	205 ADJ WT	PRJ SALE WT
78	4	734	1280

- If you're adding frame and length in your calves, look at the Bourne Fire sons. Performance and pounds compliment the smooth pattern, strong scrotal and correctness of BOURNE FIRE 976. The daughters will be keepers and the steers will add pounds in the fall. The winter got his tail but not his performance.
- VGW Cow family 7th generation female. MPPA 100.
- Top percentile EPD's: HPG 7%.

EPDs	
HB	162
GM	47
CED	7
BW	0.0
WW	62
YW	98
MK	25
ME	-2
HPG	15
CEM	3
ST	17
MARB	0.44/18
YG	0.07/19
REA	0.06/23

WESTPHAL  
90

## VGW ACCENT 982

BULL

Reg: 4142398 • VGW 982 • Clvd: 2/27/19 • 100% 1A

BECKTON ACCENT W180 C2

BECKTON ACCENT C537 N3

3487542 BECKTON ROSE Z048 N

5L SMOKE SIGNAL 756-176V

VGW SS-FLOWER 1317

1630525 VGW OLY-FLOWER 0902

BW	DAM AGE	205 ADJ WT	PRJ SALE WT
84	6	693	1280

- Beckton Accent C537 N3 has done a super job for us, and this stylish, dark cherry red prospect is as long and eye appealing as his sire. N3 is top 1% for CED and BW and top 2% for HerdBuilder EPD's. ACCENT 982 will sure breed heifers you keep in the herd, with calving ease and lighter birth weights.
- VGW Cow family 9th generation female. MPPA 98.
- Top percentile EPD's: GM 24%, CED 17%, BW 16%, HPG 13%.

EPDs	
HB	182
GM	49
CED	15
BW	-3.1
WW	55
YW	93
MK	25
ME	0
HPG	14
CEM	7
ST	16
MARB	0.43/18
YG	0.09/18
REA	0.05/24

WESTPHAL  
88

## VGW BOURNE FIRE 9122

BULL

Reg: 4142732 • VGW 9122 • Clvd: 3/30/19 • 100% 1A

5L BOURNE 117-48A

5L BOURNE FIRE 5353-52C

3483367 5L HAZEL 2766-5353

PKS BRUISER 783T

VGW 783T-STAR 0992

1322027 VGW 083-STAR 0688

BW	DAM AGE	205 ADJ WT	PRJ SALE WT
88	10	735	1170

- Every son of the Bourne Fire sire showcases his smooth, straight style and extra performance. 9122 is one of the youngest in the sale and has deep quarter, long side and a 107 WWR. 9122 combines meat and maternal in a stylish package.
- VGW Cow family 6th generation female. MPPA 102.
- Top percentile EPD's: Milk 13%, HPG 8%, YG 23%.

EPDs	
HB	136
GM	47
CED	5
BW	1.8
WW	57
YW	93
MK	28
ME	1
HPG	14
CEM	1
ST	15
MARB	0.34/18
YG	0.06/18
REA	0.01/23

WESTPHAL  
91

## VGW ACCENT 9112

BULL

Reg: 4142820 • VGW 9112 • Clvd: 3/20/19 • 100% 1A

BECKTON ACCENT W180 C2

BECKTON ACCENT C537 N3

3487542 BECKTON ROSE Z048 N

JACOBSON ADVANTAGE 3156

VGW ADV-FIREFLY 15104

3524643 VGW 286-FIREFLY 0569

BW	DAM AGE	205 ADJ WT	PRJ SALE WT
74	4	689	1130

- 9112 is a younger bull in the offering with tremendous cowherd building EPD's. He is top 5% HB, 4% CED, 10% BW, 4% Milk, 7% CEM, and 10% Stay. He is also packed with muscle and a square, eye appealing build. His dam's first heifer is retained in the herd.
- VGW Cow family 6th generation female. MPPA 101.
- Top percentile EPD's: HB 5%, CED 4%, BW 10%, Milk 4%, CEM 7%, Stay 10%.

EPDs	
HB	206
GM	46
CED	17
BW	-3.7
WW	49
YW	81
MK	30
ME	2
HPG	12
CEM	10
ST	19
MARB	0.33/17
YG	0.09/18
REA	-0.05/22



WESTPHAL  
92

## VGW ACCENT 936

BULL

Reg: 4142484 • VGW 936 • Clvd: 2/7/19 • 100% 1A

BECKTON ACCENT W180 C2

BECKTON ACCENT C537 N3

3487542 BECKTON ROSE Z048 N

RED SSS OLY 554T

VGW 554T-FLOWER 11107

1497055 VGW JUL-FLOWER 0748

BW	DAM AGE	205 ADJ WT	PRJ SALE WT
50	8	618	1225

- This very correct bull is from an exceptional female with an outstanding 107 MPPA. This prospect, ACCENT 936 is twin to a heifer, so was born at a flyweight 50 lbs.
- VGW Cow family 8th generation female. MPPA 107.
- Top percentile EPD's: HB 11%, CED 9%, BW 6%, CEM 23%, Stay 20%.

EPDs	
HB	197
GM	48
CED	16
BW	-4.3
WW	51
YW	90
MK	26
ME	-1
HPG	11
CEM	8
ST	18
MARB	0.34/18
YG	0.10/19
REA	-0.01/24

WESTPHAL  
94

## VGW ACCENT 979

BULL

Reg: 4142566 • VGW 979 • Clvd: 2/25/19 • 100% 1A

BECKTON ACCENT B468 N3

VGW ACCENT 656

3554156 VGW MEG-STAR 1464

5L BOURNE 117-48A

VGW BO-ANK 1759

3764345 VGW BB-ANK 1135

BW	DAM AGE	205 ADJ WT	PRJ SALE WT
61	2	673	1280

- Enter the pens looking for ACCENT 979. Very complete pattern, he has a defined, deep quarter and the smooth look of all the Accent sons and grandsons. His first calf heifer dam has top percentile EPD's in nine categories.
- VGW Cow family 6th generation female. MPPA 99.
- Top percentile EPD's: HB 6%, GM 23%, CED 14%, BW 4%, ADG 21%, Milk 17%, HPG 10%, Stay 19%, Marb 25%.

EPDs	
HB	205
GM	49
CED	15
BW	-4.6
WW	60
YW	99
MK	27
ME	-1
HPG	14
CEM	8
ST	18
MARB	0.50/10
YG	0.15/16
REA	0.07/22



LOT 93 - VGW ACCENT 945

WESTPHAL  
95

## VGW ACCENT 944

BULL

Reg: 4142538 • VGW 944 • Clvd: 2/9/19 • 100% 1A

BECKTON ACCENT B468 N3

VGW ACCENT 656

3554156 VGW MEG-STAR 1464

BECKTON NEW ERA B446 E2

VGW ERA-STAR 1781

3764279 VGW 2328-STAR 0959

BW	DAM AGE	205 ADJ WT	PRJ SALE WT
62	2	613	1240

- This Accent 656 son has the easy maintainer style of his lineage and traces to Beckton New Era on the dam side. There is plenty of milk from every sector of ACCENT 944's pedigree. You'll sure find this prospect sale day, and he'll draw you back for another look. He started out very light at 62 lbs. BW.
- VGW Cow family 9th generation female. MPPA 96.
- Top percentile EPD's: HB 14%, CED 9%, BW 8%, Milk 4%, Stay 19%.

EPDs	
HB	194
GM	47
CED	16
BW	-4.0
WW	48
YW	85
MK	30
ME	4
HPG	12
CEM	7
ST	18
MARB	0.39/9
YG	0.15/15
REA	-0.06/20

WESTPHAL  
93

## VGW ACCENT 945

BULL

Reg: 4142604 • VGW 945 • Clvd: 2/9/19 • 100% 1A

BECKTON ACCENT B468 N3

VGW ACCENT 656

3554156 VGW MEG-STAR 1464

JACOBSON MOUTAINEER 5076

VGW MT-INDIGO 1796

3764449 VGW 141-INDIGO 13112

BW	DAM AGE	205 ADJ WT	PRJ SALE WT
66	2	650	1220

- ACCENT 945 is a super correct, square standing, stout, clean fronted son of VGW ACCENT 656. He has a tremendous smooth, stylish phenotype, and looks much like his sire and grandsire. Out of a first calf heifer, he has a herd builder pedigree, with 6 category top EPD's including HB, CED, BW, Milk, Stay and CW.
- VGW Cow family 6th generation female. MPPA 98.
- Top percentile EPD's: HB 22%, CED 15%, BW 12%, Milk 6%, Stay 23%.

EPDs	
HB	187
GM	46
CED	15
BW	-3.5
WW	51
YW	86
MK	29
ME	1
HPG	12
CEM	8
ST	18
MARB	0.38/9
YG	0.20/15
REA	-0.16/21

WESTPHAL  
96

## VGW ACCENT 905

BULL

Reg: 4142588 • VGW 905 • Clvd: 1/28/19 • 100% 1A

BECKTON ACCENT B468 N3

VGW ACCENT 656

3554156 VGW MEG-STAR 1464

JACOBSON MOUTAINEER 5076

VGW MT-ANK 1739

3764395 VGW 0039X-ANK 1247

BW	DAM AGE	205 ADJ WT	PRJ SALE WT
70	2	618	1280

- A modest 70 lb. BW combines with an eight category top percentile EPD pedigree on ACCENT 905, who's out of a first calf heifer. His MT-ANK dam is in the top 1% of the breed for BW with a -6.4 EPD, and she has top female producer percentiles of HB 6%, CED 4%, Milk 6%, and Stay 10%.
- VGW Cow family 7th generation female. MPPA 96.
- Top percentile EPD's: HB 12%, CED 17%, BW 16%, ADG 24%, Milk 8%, CEM 23%, Stay 16%, CW 25%.

EPDs	
HB	196
GM	47
CED	15
BW	-3.2
WW	53
YW	92
MK	28
ME	2
HPG	12
CEM	8
ST	19
MARB	0.37/9
YG	0.21/14
REA	-0.17/20

WESTPHAL  
97

## VGW NEW ERA 9119

BULL

Reg: 4142698 • VGW 9119 • Clvd: 3/28/19 • 100% 1A

BECKTON NEW ERA Y194

BECKTON NEW ERA B446 E2

1706010 BECKTON BELGA W895 E

5L HOT SHOT 2370-186A

VGW HS-CHRSS 1574

3476002 VGW 396V-CHRSS 1088

BW	DAM AGE	205 ADJ WT	PRJ SALE WT
78	4	749	1205

- A moderate sized sire prospect, 9119 is extra smooth, and profiles much like his New Era sire and grandsire. He's thick and stout, and weaned at 749 lb. Adj WW. His ten-generation Chrss dam has a daughter retained in the herd, and sold a bull in our 2019 sale.

- VGW Cow family 10th generation female. MPPA 102.

- Top percentile EPD's: ADG 25%, Milk 4%, Stay 18%, CW 20%.

EPDs	
HB	179
GM	46
CED	12
BW	0.3
WW	61
YW	100
MK	30
ME	2
HPG	11
CEM	6
ST	18
MARB	0.35/17
YG	0.20/17
REA	-0.11/21

WESTPHAL  
100

## VGW PAYWEIGHT 972

BULL

Reg: 4142914 • VGW 972 • Clvd: 2/23/19 • 100% 1A

PIE PAYWEIGHT 418

PIE PAYWEIGHT 6348

3592128 PIE SAMS REBA 1080

GMRA DEUCES 2222

LASO TOW KANA Y86C

3481091 LASO TOW KANA W196Y

BW	DAM AGE	205 ADJ WT	PRJ SALE WT
69	4	627	1185

- PAYWEIGHT 972 has a different pedigree from any other sire prospect. His dam is from the LASO program in WA, and his sire is PIE Payweight 6348 bred by Pieper Red Angus. This is a clean fronted prospect with a smooth shoulder.

- Lautenschlager Red Angus bred dam. MPPA 96.

- Top percentile EPD's: Milk 15%, Stay 24%.

EPDs	
HB	178
GM	47
CED	12
BW	-2.5
WW	53
YW	87
MK	27
ME	4
HPG	11
CEM	7
ST	18
MARB	0.37/19
YG	0.11/19
REA	0.01/22

WESTPHAL  
98

## VGW NEW ERA 9104

BULL

Reg: 4142740 • VGW 9104 • Clvd: 3/9/19 • 100% 1A

BECKTON NEW ERA Y194

BECKTON NEW ERA B446 E2

1706010 BECKTON BELGA W895 E

MUSHRUSH IMPRESSIVE CA U236

VGW U236-FIREFLY 1338

1630547 VGW 396V-FIREFLY 1085

BW	DAM AGE	205 ADJ WT	PRJ SALE WT
89	6	696	1315

- 9104 is a moderate, middle-of-the-road sire with deep quarter, and is long and stout. His New Era sire is top 3% for Milk EPD. We've retained a daughter of his eight-generation Firefly dam, and her sons have sold in our past two sales.

- VGW Cow family 8th generation female. MPPA 98.

- Top percentile EPD's: GM 15%, WW 22%, YW 13%, ADG 7%, Milk 11%, CW 17%.

EPDs	
HB	174
GM	50
CED	11
BW	0.4
WW	64
YW	108
MK	28
ME	1
HPG	11
CEM	5
ST	17
MARB	0.43/18
YG	0.19/19
REA	-0.14/23

WESTPHAL  
101

## VGW DETAIL 9106

BULL

Reg: 4142496 • VGW 9106 • Clvd: 3/11/19 • 100% 1A

3SCC DOMAIN A163

3SCC DETAIL E87

3766147 3SCC SIERRA T82

5L RED TRADER 1416-396V

VGW 396V-STAR 1082

1412539 VGW 819- STAR 0315

BW	DAM AGE	205 ADJ WT	PRJ SALE WT
83	9	706	1210

- This 3SCC Detail E87 son, DETAIL 9106, is quality throughout, with great scrotal, straight legs, and smooth sides and topline. His sire is top 1% HB and Stay EPD's, while his dam is top 2% Milk, and 9106 has top percentiles for HP, Milk and Stay.

- VGW Cow family 9th generation female. MPPA 101.

- Top percentile EPD's: HB 22%, Milk 5%, Stay 15%.

EPDs	
HB	187
GM	47
CED	13
BW	-0.3
WW	57
YW	90
MK	29
ME	2
HPG	11
CEM	7
ST	19
MARB	0.43/14
YG	0.15/17
REA	-0.08/23

WESTPHAL  
99

## VGW NEW ERA 987

BULL

Reg: 4142442 • VGW 987 • Clvd: 3/1/19 • 100% 1A

BECKTON NEW ERA Y194

BECKTON NEW ERA B446 E2

1706010 BECKTON BELGA W895 E

BROWN ALLIANCE X7795

VF ANN C351-T037

3515075 BUF CRK PINETA T037

BW	DAM AGE	205 ADJ WT	PRJ SALE WT
87	4	712	1320

- NEW ERA 987 is a larger prospect, with long muscle and sides, and a flat, strong topline. He's docile and will follow you around the lot. Out of a productive VF Red Angus bred dam, he is top 5-10% in WW, YW, ADG and CW EPD categories.

- VF Red Angus bred dam. MPPA 101.

- Top percentile EPD's: GM 21%, WW 8%, YW 6%, ADG 5%, Milk 21%, Stay 15%, CW 10%.

EPDs	
HB	179
GM	49
CED	9
BW	1.3
WW	70
YW	115
MK	26
ME	4
HPG	9
CEM	3
ST	19
MARB	0.41/20
YG	0.19/20
REA	-0.09/25

WESTPHAL  
102

## VGW CHROME 9100

BULL

Reg: 4142456 • VGW 9100 • Clvd: 3/8/19 • 100% 1A

3SCC DOMAIN A163

3SCC DETAIL E87

3766147 3SCC SIERRA T82

BUF CRK THE RIGHT KIND U199

VGW U199-CHRSS 1274

1597871 VGW 783T-CHRSS 0988

BW	DAM AGE	205 ADJ WT	PRJ SALE WT
83	7	717	1215

- CHROME 9100 is out of a ten generation Chrss dam that has three daughters retained in our herd. If you're coming for one bull, or five or ten, mark 9100 – He'll fit the pattern, size, and profitable trait balance that will work in your pasture.

- VGW Cow family 10th generation female. MPPA 102.

- Top percentile EPD's: HB 22%, Milk 18%, HPG 15%, Stay 19%.

EPDs	
HB	187
GM	47
CED	12
BW	-0.4
WW	58
YW	90
MK	27
ME	2
HPG	13
CEM	6
ST	18
MARB	0.47/14
YG	0.12/18
REA	-0.10/25





**Looking to the future at Westphal Red Angus**

The heifers featured here are the foundation of our herd, and we're proud to offer them. Every year we present our cowherd through this heifer offering. We take a great deal of care to sell an elite, front-end set of cow prospects. We want you to build on our cow families for genetic success. Dan notes, "This is the only opportunity to buy females from the Westphal program, as registered females are only offered in the sale".



Sells as Lot 120



LOT 103 - VGW BF-HAZY 1985

WESTPHAL  
**103**

**VGW BF-HAZY 1985**

COW

Reg: 4142842 • Tat: VGW 1985  
Clvd: 3/9/19 • 100% 1A

5L BOURNE 117-48A

5L BOURNE FIRE 5353-52C

3483367

5L HAZEL 2766-5353

VGW MEGATRON 141

VGW MEG-HAZY 1691

3554110

VGW DD-HAZY 1328

BW	DAM AGE	205 ADJ WT	DAM MPPA
62	3	571	98

EPDs	
HB	170
GM	47
CED	9
BW	-1.1
WW	54
YW	87
MK	29
ME	-2
HPG	15
CEM	4
ST	17

WESTPHAL  
**104**

**VGW RE-INDIGO 1991**

COW

Reg: 4142832 • Tat: VGW 1991  
Clvd: 3/12/19 • 100% 1A

RED U-2 RECKONING 149A

RED U-2 RECKONING 294C

2585268

RED U-2 LASSIE 16A

BECKTON NEW ERA B446 E2

VGW NE- INDIGO 1667

3553958

VGW PAT-INDIGO 0608

BW	DAM AGE	205 ADJ WT	DAM MPPA
81	3	661	105

EPDs	
HB	163
GM	46
CED	8
BW	1.3
WW	62
YW	97
MK	30
ME	-5
HPG	8
CEM	4
ST	18

• INDIGO 1991 is a striking female, with the just-right size to make a very functional cow. This Reckoning-Indigo daughter is easy to look at, and all-around very complete.

• 1991 - VGW Cow family 7th generation female.

• Top percentile EPD's: Milk 3%, ME 15%, CW 25%.

- HAZY 1985 is a heifer that has an extra thick, deep rib with plenty of style and eye appeal. She moves freely with extra length, and stands straight on very correct feet and legs. What an opportunity she represents to continue a highly productive cow family.
- 1985 - VGW Cow family 8th generation female.
- Top percentile EPD's: Milk 7%, HPG 6%.



**LOT 105 - VGW-IM-PINETA 1926**

**WESTPHAL**  
**105**

**VGW IM-PINETA 1926**

COW

Reg: 4142648 • Tat: VGW 1926

Clvd: 2/3/19 • 100% 1A

5L TOPGUN 560-65B

LJC ICEMAN 411D

3543821

LJC LACIE 411

BIEBER GLADIATOR C386

VGW GD-PINETA 1702

3764715

VF ANN C351-T037

BW	DAM AGE	205 ADJ WT	DAM MPPA
65	2	597	100

EPDs	
HB	165
GM	50
CED	13
BW	-1.3
WW	73
YW	118
MK	19
ME	3
HPG	11
CEM	8
ST	14

**WESTPHAL**  
**106**

**VGW PIO-SUNBURST 1923**

COW

Reg: 4142428 • Tat: VGW 1923

Clvd: 2/1/19 • 100% 1A

PIE CINCH 4126

RREDS PIONEER 6904

3585350

BASIN PRIMROSE 0T43

BECKTON NEBULA Y360 J4

5L SUNBUSRT 233-3355

3484271

5L SUNBUSRT 2541-233

BW	DAM AGE	205 ADJ WT	DAM MPPA
62	4	542	98

EPDs	
HB	201
GM	46
CED	15
BW	-3.1
WW	49
YW	74
MK	31
ME	-1
HPG	13
CEM	8
ST	20

**LOT 106 - VGW PIO-SUNBURST 1923**

- PINETA 1926 showcases a beautiful, angular femininity, and is from the Iceman 411D-Pineta 1702 mating. Her first calf heifer dam did a great job adding performance, and this cow prospect can sure add capacity and wean heavy calves. The Iceman daughters are moderate at birth and a set of females like 1926 can make a tremendous cowherd.
- 1926 - VGW Cow family 2nd generation female.
- Top percentile EPD's: GM 10%, WW 4%, YW 3%, ADG 5%, MARB 14%, CW 5%.

- SUNBURST 1923 is a long, powerful heifer, exhibiting extra rib and capacity, and an eight-category EPD trait leader. Her dam, Sunburst 233-3355 is the mother of our young herdsire VGW Editor 702. She is generations deep at 5L Red Angus and was generations deep at Triple X Red Angus prior to 5L. Sunburst is also a lead cow family in the Brickhouse Farms herd in Missouri. Here's a female we hate to sell, but what an opportunity she presents.
- 1923 - VGW Cow family 1st generation female.
- Top percentile EPD's: HB 8%, CED 19%, BW 16%, DMI 23%, Milk 2%, HPG 19%, Stay 7%, Marb 25%.

WESTPHAL  
107

## VGW 537-FIREFLY 1972

COW

Reg: 4142778 • Tat: VGW 1972

Clvd: 2/28/19 • 100% 1A

BECKTON ACCENT W180 C2

BECKTON ACCENT C537 N3

3487542 BECKTON ROSE Z048 N

SIX MILE WHEAT KING 810W

VGW WK-FIREFLY 1184

1444797 VGW M82-FIREFLY 0479

BW	DAM AGE	205 ADJ WT	DAM MPPA
73	8	613	103

EPDs	
HB	184
GM	46
CED	15
BW	-2.3
WW	51
YW	86
MK	34
ME	-1
HPG	10
CEM	8
ST	18

- FIREFLY 1972 is feminine and deep, and one that we sure could have retained in our herd. CED, Milk and Stay top percentile EPD's, and eight generations of the Firefly cow family are represented in this fancy heifer.
- 1972 - VGW Cow family 8th generation female.
- Top percentile EPD's: CED 22%, Milk 1%, Stay 23%.

WESTPHAL  
110

## VGW 537-DORA 1984

COW

Reg: 4142906 • Tat: VGW 1984

Clvd: 3/9/19 • 100% 1A

BECKTON ACCENT W180 C2

BECKTON ACCENT C537 N3

3487542 BECKTON ROSE Z048 N

LARSON PALADIN 238

VGW PAL-DORA 1675

3554061 VGW RK-DORA 1118

BW	DAM AGE	205 ADJ WT	DAM MPPA
82	3	582	99

EPDs	
HB	193
GM	49
CED	15
BW	-1.3
WW	56
YW	96
MK	28
ME	1
HPG	12
CEM	8
ST	18

- DORA 1984 is out of an extra-productive Dora cow-family member. She is put together well, with the shape and rib you want to see in your heifers, and a set of females like her would make a great set of cows.
- 1984 - VGW Cow family 8th generation female.
- Top percentile EPD's: HB 14%, GM 24%, CED 22%, ADG 21%, DMI 25%, Milk 10%.

WESTPHAL  
108

## VGW 656-ANK 1957

COW

Reg: 4142612 • Tat: VGW 1957

Clvd: 2/20/19 • 100% 1A

BECKTON ACCENT B468 N3

VGW ACCENT 656

3554156 VGW MEG-STAR 1464

VGW MERCY-MERCY 412

VGW MER-ANK 1764

3764467 VGW RIC-ANK 1372

BW	DAM AGE	205 ADJ WT	DAM MPPA
69	2	589	99

EPDs	
HB	188
GM	47
CED	16
BW	-3.3
WW	56
YW	90
MK	29
ME	1
HPG	12
CEM	8
ST	18

- ANK 1957 is an ultra feminine VGW Accent 656 daughter with big rib and the build you can sure use in short grass country. She is big hiped, with loads of capacity.
- 1957 - VGW Cow family 8th generation female.
- Top percentile EPD's: HB 21%, CED 13%, BW 14%, Milk 8%.

WESTPHAL  
111

## VGW RD-STAR 1939

COW

Reg: 4142736 • Tat: VGW 1939

Clvd: 2/8/19 • 100% 1A

5L DEFENDER 560-30Z

5L THE REAL DEAL 1687-143B

1701634 5L FIREFLY 275-1687

JACOBSON ADVANTAGE 3156

VGW 3156-STAR 1583

3475962 VGW U199-STAR 1235

BW	DAM AGE	205 ADJ WT	DAM MPPA
77	4	530	100

EPDs	
HB	161
GM	49
CED	11
BW	0
WW	58
YW	101
MK	26
ME	-4
HPG	12
CEM	7
ST	15

- STAR 1939 is a ten-generation female from an efficient cow family, and is bred to be a strong producer in the program she goes to. She has quality lineage, both from her 5L Real Deal sire, and her Jacobsen Advantage dam. She's one that can bring in a big calf every year.
- 1939 - VGW Cow family 10th generation female.
- Top percentile EPD's: GM 25%, ADG 10%, Milk 21%, ME 20%, Marb 18%, Fat 21%.

WESTPHAL  
109

## VGW BF-MARTHA 1992

COW

Reg: 4142424 • Tat: VGW 1992

Clvd: 3/13/19 • 100% 1A

5L BOURNE 117-48A

5L BOURNE FIRE 5353-52C

3483367 5L HAZEL 2766-5353

5L CRAFTSMAN 1134-150X

5L MARTHA 1952-5065

3484045 5L MARTHA 3450-1952

BW	DAM AGE	205 ADJ WT	DAM MPPA
75	4	562	99

EPDs	
HB	167
GM	48
CED	8
BW	-0.4
WW	52
YW	84
MK	27
ME	-7
HPG	15
CEM	3
ST	17

- MARTHA 1992 has 5L breeding on both sides, being a Bourne Fire 52D-Craftsman 150X cross. She can mature into an efficient, moderate sized mature female. Her dam had twin heifers in 2018.
- 1992 - VGW Cow family 1st generation female.
- Top percentile EPD's: DMI 23%, Milk 17%, ME 8%, HPG 7%.

WESTPHAL  
112

## VGW RE-MERCEDES 1983

COW

Reg: 4142866 • Tat: VGW 1983

Clvd: 3/8/19 • 100% 1A

RED U-2 RECKONING 149A

RED U-2 RECKONING 294C

2585268 RED U-2 LASSIE 16A

LARSON PALADIN 238

VGW PAL-MERCEDES 1680

3554071 VGW W054-MERCEDES 1215

BW	DAM AGE	205 ADJ WT	DAM MPPA
73	3	580	97

EPDs	
HB	158
GM	47
CED	11
BW	-0.4
WW	55
YW	87
MK	29
ME	-6
HPG	9
CEM	6
ST	16

- MERCEDES 1983 is a beautifully patterned heifer and she's a ten-generation member of one of our solid, solid foundation cow families. Here is a very complete female bred to be an efficient, functional dam.
- 1983 - VGW Cow family 10th generation female.
- Top percentile EPD's: Milk 7%, ME 13%.





LOT 113 - IM-HAZEL 1940

WESTPHAL 113 VGW IM-HAZEL 1940 COW			
Reg: 4142430 • Tat: VGW 1940			
Clvd: 2/8/19 • 100% 1A			
5L TOPGUN 560-65B			
LJC ICEMAN 411D			
3543821 LJC LACIE 411			
5L RED STEEL 3521-10A			
5L HAZEL 4883-2405			
3493657 5L HAZEL 257-4883			
BW	DAM AGE	205 ADJ WT	DAM MPPA
70	4	583	97
EPDs			
HB	157		
GM	48		
CED	14		
BW	-2.3		
WW	64		
YW	103		
MK	18		
ME	-1		
HPG	14		
CEM	7		
ST	13		

- HAZEL 1940 is deep through her rib and flank. You'll like her. She strides out with a solid set of feet and legs, and she is femininity personified. The Iceman 411D-5L Hazel cross is the kind of heifer we can use, and will work well in the program she goes to.
- 1940 - VGW Cow family 1st generation female.
- Top percentile EPD's: CED 23%, WW 25%, YW 23%, ADG 22%, HPG 14%, CW 21%.



LOT 115 - VGW ED-COLLEEN 1906

WESTPHAL 115 VGW ED-COLLEEN 1906 COW			
Reg: 4142616 • Tat: VGW 1906			
Clvd: 1/29/19 • 100% 1A			
5L GAME ON 703-50C			
VGW EDITOR 702			
3764711 5L SUNBUSRT 233-3355			
LARSON PALADIN 238			
VGW PAL-COLLEEN 1758			
3764509 VGW W054-COLLEEN 1382			
BW	DAM AGE	205 ADJ WT	DAM MPPA
60	2	536	95
EPDs			
HB	164		
GM	47		
CED	16		
BW	-3.7		
WW	52		
YW	85		
MK	27		
ME	-3		
HPG	11		
CEM	8		
ST	14		

- COLLEEN 1906 is an "out-front" style replacement heifer. She's just right sized, thick and large ribbed. Very feminine, she has a clean front end and fancy profile. Every one wants a pasture full of females like this Editor 702 daughter
- 1906 - VGW Cow family 3rd generation female.
- Top percentile EPD's: CED 8%, BW 10%, Milk 14%.

WESTPHAL 114 VGW BC- INDIGO 1995 COW			
Reg: 4142408 • Tat: VGW 1995			
Clvd: 3/15/19 • 100% 1A			
ANDRAS FUSION R236			
VGW BUMPER CROP 510			
3475897 RED CROWFOOT PRINCENE 3222A			
RED CROWFOOT 4ACES 2193Z			
VGW 4ACES-INDIGO 1534			
3475985 VGW BB-INDIGO 1123			
BW	DAM AGE	205 ADJ WT	DAM MPPA
76	4	529	98
EPDs			
HB	137		
GM	48		
CED	11		
BW	-0.1		
WW	54		
YW	86		
MK	27		
ME	-8		
HPG	12		
CEM	6		
ST	12		

- INDIGO 1995 is extra feminine, with overall angular build. From a great cow family, she is the type to be bred each year and in production for years.
- 1995 - VGW Cow family 5th generation female.
- Top percentile EPD's: Milk 16%, ME 6%, YW 19%, REA 25%.

WESTPHAL 116 VGW KU-STAR 1913 COW			
Reg: 4142640 • Tat: VGW 1913			
Clvd: 1/31/19 • 100% 1A			
5L DEFENDER 560-30Z			
KUHN'S DEFENDER E035			
3831971 KUHN'S IMPRESSION Z055			
VGW CINCH 503			
VGW CI-STAR 1703			
3764677 VGW JO-STAR 1591			
BW	DAM AGE	205 ADJ WT	DAM MPPA
59	2	531	96
EPDs			
HB	156		
GM	48		
CED	17		
BW	-3.4		
WW	49		
YW	82		
MK	27		
ME	-3		
HPG	12		
CEM	8		
ST	13		

- STAR 1913 started out at a light, light 59 lb. birth weight from a nine-generation Star cow family dam. Full of pattern, she has a long hip and is put together like we want heifers to be.
- 1913 - VGW Cow family 9th generation female.
- Top percentile EPD's: CED 6%, BW 13%, Milk 19%, Marb 22%, YG 14%, Fat 12%.

WESTPHAL  
**117****VGW 656-INDIGO 1963**

COW

Reg: 4142532 • Tat: VGW 1963

Clvd: 2/23/19 • 100% 1A

BECKTON ACCENT B468 N3

**VGW ACCENT 656**

3554156 VGW MEG-STAR 1464

5L BOURNE 117-48A

**VGW BO-INDIGO 17110**

3764253 VGW 414-INDIGO 0879

BW	DAM AGE	205 ADJ WT	DAM MPPA
66	2	534	95

EPDs	
HB	201
GM	50
CED	15
BW	-3.3
WW	58
YW	99
MK	28
ME	1
HPG	14
CEM	8
ST	18

- INDIGO1963 is an all-around correct, flat-topped heifer. She's attractive and the easy doing kind, with seven top percentile EPD values. The Indigo females are feminine, productive, good milking dams.
- 1963 - VGW Cow family 7th generation female.
- Top percentile EPD's: HB 8%, GM 15%, CED 15%, BW 14%, ADG 14%, Milk 9%, HPG 11%.

WESTPHAL  
**120****VGW RE-ANK 1977**

COW

Reg: 4142830 • Tat: VGW 1977

Clvd: 3/2/19 • 100% 1A

RED U-2 RECKONING 149A

**RED U-2 RECKONING 294C**

2585268 RED U-2 LASSIE 16A

VGW MERCY-MERCY 412

**VGW MER-ANK 1647**

3553952 VGW CAL-ANK 0464

BW	DAM AGE	205 ADJ WT	DAM MPPA
76	3	604	88

EPDs	
HB	172
GM	46
CED	10
BW	-0.2
WW	58
YW	93
MK	26
ME	-5
HPG	9
CEM	6
ST	18

- ANK 1977 is a dark red, feminine heifer that is thick and has an easy-doing look and easy-going disposition. This cow family is ten generations strong because of their super maternal and milk qualities.
- 1979 - VGW Cow family 10th generation female.
- Top percentile EPD's: Milk 22%, ME 15%, Stay 24%.

WESTPHAL  
**118****VGW 537-ABIGRACE 1966**

COW

Reg: 4142690 • Tat: VGW 1966

Clvd: 2/25/19 • 100% 1A

BECKTON ACCENT W180 C2

**BECKTON ACCENT C537 N3**

3487542 BECKTON ROSE Z048 N

LSF SAGA 1040Y

**C-BAR ABIGRACE 653D**

3740033 C-BAR ABIGRACE 209Z

BW	DAM AGE	205 ADJ WT	DAM MPPA
61	3	510	95

EPDs	
HB	186
GM	48
CED	17
BW	-5.3
WW	45
YW	79
MK	30
ME	1
HPG	12
CEM	9
ST	17

- ABIGRACE 1966 has a light, light 61 lb. birth weight and 6 categories of cow-builder top percentile EPD's. Beckton Accent N3 daughters are solid, productive mothers with milk and maternal quality. There's no problem with her bringing in a big calf.
- 1966 - VGW Cow family 1st generation female.
- Top percentile EPD's: HB 24%, CED 4%, BW 2%, DMI 14%, Milk 4%, CEM 16%.

WESTPHAL  
**121****VGW 656-DORA 1987**

COW

Reg: 4142644 • Tat: VGW 1987

Clvd: 3/11/19 • 100% 1A

BECKTON ACCENT B468 N3

**VGW ACCENT 656**

3554156 VGW MEG-STAR 1464

VGW CINCH 503

**VGW CI-DORA 1708**

3764693 VGW 141-DORA 1561

BW	DAM AGE	205 ADJ WT	DAM MPPA
60	2	521	94

EPDs	
HB	195
GM	47
CED	17
BW	-4.2
WW	50
YW	85
MK	28
ME	1
HPG	13
CEM	9
ST	18

- DORA 1987 is another of the ten generations heifers in the offering. She's dark red, feminine and fancy with plentiful hip, rib and capacity. With the look of a herd bull maker, out of a first calf heifer, she started with a light, light 60 lb. birth weight.
- 1987 - VGW Cow family 10th generation female.
- Top percentile EPD's: HB 13%, CED 7%, BW 6%, Milk 13%, HPG 19%, CEM 18%, Stay 23%.

WESTPHAL  
**119****VGW 537-STAR 1979**

COW

Reg: 4142812 • Tat: VGW 1979

Clvd: 3/4/19 • 100% 1A

BECKTON ACCENT W180 C2

**BECKTON ACCENT C537 N3**

3487542 BECKTON ROSE Z048 N

JACOBSON ADVANTAGE 3156

**VGW ADV-STAR 15110**

3524634 VGW BB-STAR 1132

BW	DAM AGE	205 ADJ WT	DAM MPPA
64	4	525	94

EPDs	
HB	199
GM	48
CED	16
BW	-3.9
WW	49
YW	85
MK	30
ME	0
HPG	12
CEM	9
ST	18

- STAR 1979 is a ten-generation female with maternal quality from her Accent sire and the Star cow lineage. Here is an opportunity to invest in a cow family that does it all in our herd. She is top 9% HerdBuilder, and top 8% BW EPD category leader. She has a very light BW of just 64 lbs.
- 1979 - VGW Cow family 10th generation female.
- Top percentile EPD's: HB 9%, CED 13%, BW 8%, DMI 17%, Milk 3%, CEM 20%, Stay 20%.

WESTPHAL  
**122****VGW 448-PRINCENE 1970**

COW

Reg: 4142890 • Tat: VGW 1970

Clvd: 2/26/19 • 100% 1A

VGW NAVIGATOR 010

**3SCC NAVIGATOR A448**

1648436 BSKF POLLY S208

5L HOT SHOT 2370-186A

**VGW HS-PRINCENE 1688**

3554196 RED CROWFOOT PRINCENE 3222A

BW	DAM AGE	205 ADJ WT	DAM MPPA
61	3	514	97

EPDs	
HB	194
GM	46
CED	15
BW	-2.7
WW	43
YW	73
MK	31
ME	-5
HPG	14
CEM	8
ST	19

- PRINCENE 1970 is a smaller framed female from a very productive cow, Princene 1688, who has one daughter in our herd. This heifer has a 61 lb. BW and top percentile EPD in eight performance and maternal categories.
- 1970 - VGW Cow family 2nd generation female.
- Top percentile EPD's: HB 13%, CED 20%, BW 23%, DMI 23%, Milk 2%, ME 15%, HPG 11%, Stay 15%.

WESTPHAL  
**123****VGW 446-CAMILLE1962**

COW

Reg: 4142734 • Tat: VGW 1962

Clvd: 2/22/19 • 100% 1A

BECKTON NEW ERA Y194

**BECKTON NEW ERA B446 E2**

1706010

BECKTON BELGA W895 E

VGW BASES LOADED 905

**VGW 905-CAMILLE 1371**

1630345

VGW RT-CAMILLE 0824

BW	DAM AGE	205 ADJ WT	DAM MPPA
88	6	597	96

EPDs	
HB	165
GM	49
CED	8
BW	2
WW	66
YW	112
MK	26
ME	2
HPG	10
CEM	3
ST	17

• CAMILLE 1962, feminine from front to back, is a performance power heifer. She has tremendous maternal history from both sire and dam lineage, and is bred to be a front pasture female. She will carry forward the outstanding production of the Camille cow family.

• 1962 - VGW Cow family 4th generation female.

• Top percentile EPD's: GM 20%, WW 17%, YW 9%, ADG 4%, Milk 22%, CW 9%.

WESTPHAL  
**124****VGW KU-CHRSS 1958**

COW

Reg: 4142564 • Tat: VGW 1958

Clvd: 2/20/19 • 100% 1A

5L DEFENDER 560-30Z

**KUHNS DEFENDER E035**

3831971

KUHNS IMPRESSION Z055

MLK CRK LEGEND 5209

**VGW LEG-CHRSS 1747**

3764335

VGW 396V-CHRSS 1087

BW	DAM AGE	205 ADJ WT	DAM MPPA
68	2	501	93

EPDs	
HB	166
GM	49
CED	15
BW	-2
WW	51
YW	87
MK	26
ME	-3
HPG	12
CEM	8
ST	14

• CHRSS 1958 is a strong topped, very attractive, big ribbed heifer. She has the look you want to see in every easy doing dam, and she'll work on short grass. She'll produce heavy calves, and is an eleven-generation member of one of our most established, very productive cow lines.

• 1958 - VGW Cow family 11th generation female.

• Top percentile EPD's: CED 14%, ME 25%, CEM 23%, YG 7%, REA 25%, FAT 24%.

WESTPHAL  
**125****VGW 656-RED P1906**

COW

Reg: 4142522 • Tat: VGW P1906

Clvd: 2/1/19 • 99.6% 1B

BECKTON ACCENT B468 N3

**VGW ACCENT 656**

3554156

VGW MEG-STAR 1464

JACOBSON MOUTAINEER 5076

**VGW MT-RED P1709**

3764225

VGW NC-RED P0625

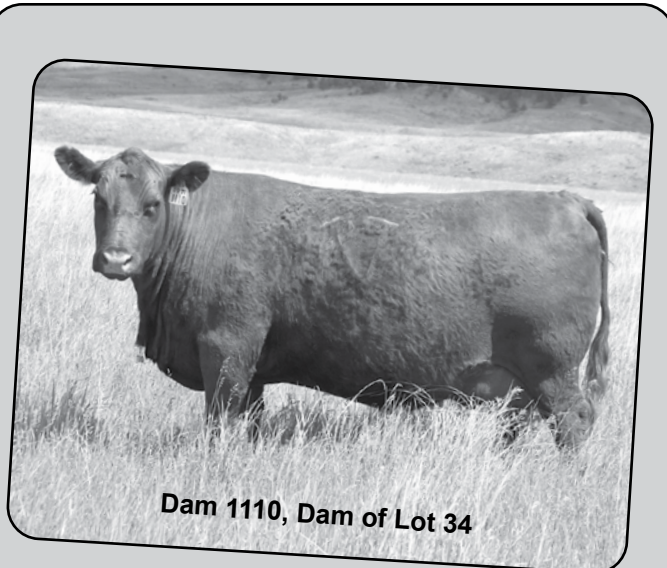
BW	DAM AGE	205 ADJ WT	DAM MPPA
55	2	639	102

EPDs	
HB	186
GM	47
CED	18
BW	-5.4
WW	55
YW	93
MK	30
ME	2
HPG	11
CEM	9
ST	17

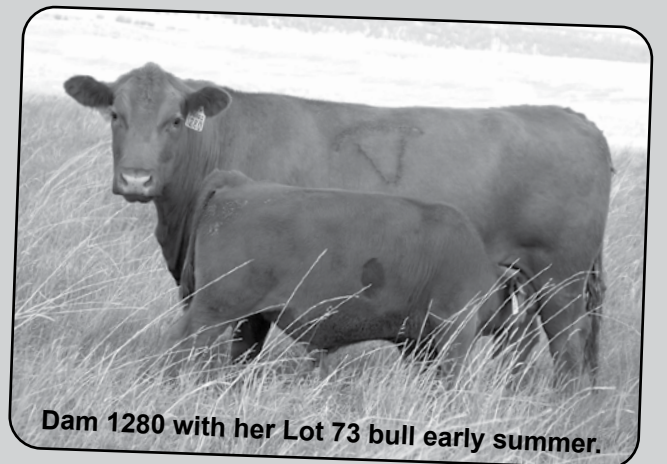
• RED P1906 is out of a first calf heifer, by VGW Accent 656. First-rate maternal cow potential is showcased here, and she has top 2% BW, and top 3% CED and Milk EPD's values. This heifer can be a cow-power leader, born at just 55 pounds.

• P1906 - VGW Cow family 7th generation female.

• Top percentile EPD's: HB 24%, CED 3%, BW 2%, ADG 25%, Milk 3%, CEM 12%, CW 12%.



Dam 1110, Dam of Lot 34



Dam 1280 with her Lot 73 bull early summer.



WESTPHAL  
**126****VGW ED-RED P1912**

COW

Reg: 4142498 • Tat: VGW P1912

Clvd: 2/9/19 • 99.9% 1B

5L GAME ON 703-50C

**VGW EDITOR 702**

3764711

5L SUNBUSRT 233-3355

5L RED TRADER 1416-396V

**VGW 396V-RED P1022**

1374429

VGW BO-RED P0619

BW	DAM AGE	205 ADJ WT	DAM MPPA
64	9	612	101

EPDs	
HB	178
GM	46
CED	17
BW	-3.6
WW	54
YW	84
MK	33
ME	-3
HPG	12
CEM	9
ST	16

- RED P1912 features the breeding of our young sire, VGW Editor 702, who has a number of sons in the sale. This females dam is a productive Red Trader daughter who has sold two sons in our sales. The heifer is a ten-generation dam with a light 64 lb BW.

- P1912 - VGW Cow family 10th generation female.

- Top percentile EPD's: HB 24%, CED 3%, BW 2%, ADG 25%, Milk 3%, CEM 12%, CW 12%.

WESTPHAL  
**127****VGW 537-RED P1920**

COW

Reg: 4142898 • Tat: VGW P1920

Clvd: 3/8/19 • 99.9% 1B

BECKTON ACCENT W180 C2

**BECKTON ACCENT C537 N3**

3487542

BECKTON ROSE Z048 N

JACOBSON ADVANTAGE 3156

**VGW ADV-RED P1619**

3554223

VGW MOON-RED P1306

BW	DAM AGE	205 ADJ WT	DAM MPPA
61	3	598	104

EPDs	
HB	200
GM	48
CED	17
BW	-4.5
WW	52
YW	89
MK	31
ME	0
HPG	12
CEM	9
ST	18

- RED P1920 has an amazing eleven generations of VGW females in her cow line, backed by top percentile EPD's in the female factory categories of HB, CED, BW and Milk. When female lines last like this heifer's line, it makes for an easy investment with no guesswork for the buyer. If we could keep more, this heifer wouldn't sell.

- P1920 - VGW Cow family 11th generation female.

- Top percentile EPD's: HB 9%, CED 4%, BW 5%, Milk 1%, HPG 24%, CEM 14%, Stay 22%.

WESTPHAL  
**128****VGW 537-RED P1916**

COW

Reg: 4142944 • Tat: VGW P1916

Clvd: 2/26/19 • 99.9% 1B

BECKTON ACCENT W180 C2

**BECKTON ACCENT C537 N3**

3487542

BECKTON ROSE Z048 N

VGW MERCY-MERCY 412

**VGW MER-RED P1605**

3554203

VGW M183 RED P0812

BW	DAM AGE	205 ADJ WT	DAM MPPA
72	3	583	101

EPDs	
HB	196
GM	48
CED	16
BW	-2.9
WW	53
YW	91
MK	30
ME	2
HPG	10
CEM	8
ST	19

- RED P1916 is top 1% Milk, top 4% CED and top 5% for BW EPD values. Full of pattern, she will be a productive mature cow. She has a Mercy-Mercy dam who has one daughter carrying on her production in the herd.

- P1916 - VGW Cow family 8th generation female.

- Top percentile EPD's: HB 9%, CED 4%, BW 5%, Milk 1%, HPG 24%, CEM 14%, Stay 22%.

WESTPHAL  
**129****VGW 537-RED P1918**

COW

Reg: 4142804 • Tat: VGW P1918

Clvd: 3/2/19 • 99.9% 1B

BECKTON ACCENT W180 C2

**BECKTON ACCENT C537 N3**

3487542

BECKTON ROSE Z048 N

VGW UNLIMITED 819

**VGW 819 RED P0808**

1250485

VGW NC-RED P0629

BW	DAM AGE	205 ADJ WT	DAM MPPA
76	11	579	101

EPDs	
HB	181
GM	48
CED	14
BW	-2.5
WW	51
YW	91
MK	26
ME	1
HPG	11
CEM	4
ST	18

- RED P1918 has an 11-year-old dam that's produced several bulls sold in our previous sales, and she has three daughters retained. 1918 is an efficient female with nice length, expressive muscle and a brood cow look.

- P1918 - VGW Cow family 10th generation female.

- Top percentile EPD's: ADG 23%, Milk 24%.

WESTPHAL  
**130****VGW ED-RED P1908**

COW

Reg: 4142776 • Tat: VGW P1908

Clvd: 2/3/19 • 99.7% 1B

5L GAME ON 703-50C

**VGW EDITOR 702**

3764711

5L SUNBUSRT 233-3355

BUF CRK THE RIGHT KIND U199

**VGW U199-RED P1413**

1696365

VGW 262-RED P0514

BW	DAM AGE	205 ADJ WT	DAM MPPA
61	4	553	104

EPDs	
HB	179
GM	47
CED	16
BW	-3.9
WW	53
YW	87
MK	29
ME	-5
HPG	13
CEM	9
ST	15

- RED P1908 is top 5% Milk and top 8% CED and BW EPD values. Broody and feminine, she can make a positive impact as a mature cow. Take a look at each of the Editor 702 daughters. Her dam has had sons in each of the last three sales.

- P1908 - VGW Cow family 8th generation female. You can't go wrong here.

- Top percentile EPD's: CED 8%, BW 8%, Milk 5%, ME 18%, HPG 22%, CEM 9%.

WESTPHAL  
**131****VGW IM-RED P1904**

COW

Reg: 4142570 • Tat: VGW P1904

Clvd: 1/31/19 • 99.9% 1B

5L TOPGUN 560-65B

**LJC ICEMAN 411D**

3543821

LJC LACIE 411

RED U-2 FOREIGNER 413B

**VGW FOR-RED P1710**

3764361

VGW RTR-RED P1116

BW	DAM AGE	205 ADJ WT	DAM MPPA
62	2	586	98

EPDs	
HB	152
GM	47
CED	15
BW	-1.7
WW	64
YW	98
MK	21
ME	-3
HPG	12
CEM	8
ST	13

- RED P 1904 is a neat, feminine heifer with a pleasing pattern and plentiful spring of rib. The Red cow families started the beginning of our program, and these 8-11 generation females represent the female type we've bred for ever since. They're the definition of consistency.

- P1904 - VGW Cow family 9th generation female.

- Top percentile EPD's: CED 22%, WW 23%, CEM 22%.


  
132
**VGW RE-RED P1915**

COW

Reg: 4142894 • Tat: VGW P1915

Clvd: 2/22/19 • 99.9% 1B

RED U-2 RECKONING 149A

**RED U-2 RECKONING 294C**

2585268

RED U-2 LASSIE 16A

RED U-2 FOREIGNER 413B

**VGW FOR-RED P1608**

3554212

VGW 396V-RED P1022

BW	DAM AGE	205 ADJ WT	DAM MPPA
50	3	582	95

EPDs	
HB	182
GM	45
CED	16
BW	-4.2
WW	51
YW	80
MK	31
ME	-9
HPG	10
CEM	9
ST	17

- RED P1915 has seven top percentile EPD values and she is the tenth generation of her cow family. Her fancy body and moderate dimension, and pleasing pattern come together in a feminine package. She has a -4.2 BW EPD and 7 categories of top percentile EPD's.

- P1915 - VGW Cow family 10th generation female.

- Top percentile EPD's: CED 10%, BW 6%, Milk 2%, ME 3%, CEM 12%, YG 22%, REA 20%.


  
133
**VGW DO-RED P1907**

COW

Reg: 4142544 • Tat: VGW P1907

Clvd: 2/2/19 • 99.9% 1B

BECKTON DOMINOR T122 Z1

**3SCC DOMAIN A163**

1619642

3SCC EUCLA X723

VGW CINCH 503

**VGW CINCH-RED P1701**

3764621

VGW HOT SHOT-RED P1510

BW	DAM AGE	205 ADJ WT	DAM MPPA
57	2	533	95

EPDs	
HB	223
GM	50
CED	16
BW	-3.2
WW	53
YW	92
MK	26
ME	0
HPG	12
CEM	7
ST	21

- RED P1907 is an attractive, feminine prospect with a top 1% HerdBuilder and top 14% GridMaster EPD's. She has an efficient look and the cow family history to make her a highly productive mature cow. Take a look at this maternal factory.

- P1907 - VGW Cow family 10th generation female.

- Top percentile EPD's: HB 1%, GM 14%, CED 9%, BW 16%, ADG 25%, Stay 2%, Marb 6%.


  
134
**VG BF-RED P1913**

COW

Reg: 4142754 • Tat: VGW P1913

Clvd: 2/13/19 • 99.8% 1B

5L BOURNE 117-48A

**5L BOURNE FIRE 5353-52C**

3483367

5L HAZEL 2766-5353

VGW BASES LOADED 905

**VGW 905-RED P1325**

1630402

VGW 262-RED P0532

BW	DAM AGE	205 ADJ WT	DAM MPPA
86	6	520	98

EPDs	
HB	148
GM	49
CED	5
BW	1.8
WW	56
YW	95
MK	25
ME	-1
HPG	14
CEM	0
ST	16

- RED P1913 is a larger, more angular heifer with the makings of a very usable cow. She is long sided and feminine. Her dam is a Bases Loaded daughter that milks well, and is a stylish, very broody dam.

- P1913 - VGW Cow family 8th generation female.

- Top percentile EPD's: GM 21%, ADG 24%, HPG 11%, YG 20%.

**COMMERCIAL HEIFERS**

**43 head of commercial heifers. Lots 135-177 from the heart of our commercial replacements sell.**

- They are Bangs vaccinated and have had PregGuard 10.
- They will be cycling and ready to breed after the sale.
- They're sired by multiple, registered Westphal Red Angus sires.
- These are commercials, thus can not be registered.
- All commercial heifers have been tested BVD-PI negative.

GROUP	PRICE	LOT #
1		
2		
3		
4		
5		
6		
7		
8		
9		
10		
11		
12		
13		
14		
15		



**RAISING REGISTERED RED ANGUS SINCE 1976**

**(Fall 2019) RAAA EPD AVERAGES AND RANGES COMPARED TO WESTPHAL AVERAGE EPD'S.**

EPD's are shown with each lot in the sale. The chart below shows the average and range of proven and opportunity sires on the current year RAAA Spring EPD Summary. Also shown are the same for all non-parent animals under two years of age. For your ease of comparison, the bottom highlighted EPD's are the average of our bulls selling in this year's sale.

**EPD AVERAGES AND RANGES FOR PROVEN AND OPPORTUNITY SIRES**

	HB	GM	CED	BW	WW	YW	MK	ME	HPG	CEM	ST	MARB
Average:	168	48	12	-1.3	59	93	23	-1	11	7	16	0.40
Range:	-54-275	32-64	-2-25	-12.5-8.7	-15-104	-44-175	0-48	-24-22	-6-27	-7-17	-2-27	-0.88-1.49

**EPD AVERAGES AND RANGES FOR NON PARENTS UNDER TWO YEARS OF AGE**

	HB	GM	CED	BW	WW	YW	MK	ME	HPG	CEM	ST	MARB
Average:	169	48	12	-1.4	58	91	23	-1	11	7	16	0.40
Range:	-65-290	31-59	-5-26	-11.1-9.7	0-102	0-164	-1-44	-18-18	-6-38	-6-16	0-28	-0.71-1.37

**AVERAGE EPD'S OF WESTPHAL RED ANGUS SALE BULLS**

	HB	GM	CED	BW	WW	YW	MK	ME	HPG	CEM	ST	MARB
Average:	171	48	12	-0.9	63	102	26	-1.6	12	6	17	0.47



**VGW BUMPER CROP 510 Reg: 3475897 100% 1A**

Sire: ANDRAS FUSION R236 (1506931) MGS: XO CROWFOOT 0102X (2317278)  
BW 76/102 WW 829/114 YW 1180/103 %IMF 3.51/89 REA 12.22/104 FAT 0.21/103

	HB	GM	CED	BW	WW	YW	MILK	ME	HPG	CEM	STAY	MARB	YG	REA
EPD	131	48	12	0.1	62	98	25	-11	11	6	11	0.50	0.11	0.05
Pctl	91%	45%	54%	77%	37%	38%	36%	9%	45%	69%	92%	27%	52%	43%

Bumper Crop is our top Andras Fusion son, with a birth weigh of 76 lbs. and an Adj WW of 829 lbs. and a WWR of 114. He's deep and long sided with ample red meat deep into his quarter. We appreciate his sons and daughters, and sons sell as Lots 6 and 37-43, with a daughters selling as Lot 114.

**VGW EDITOR 702 Reg: 3764711 100% 1A**

Sire: 5L GAME ON 703-50C (3483647) MGS: BECKTON NEBULA Y360 J4 (1451649)  
BW 67/90 WW 769/108 YW 1269/107 %IMF 6.79/163 REA 12.90/96 FAT 0.42/693

	HB	GM	CED	BW	WW	YW	MILK	ME	HPG	CEM	STAY	MARB	YG	REA
EPD	183	49	17	-3.9	59	95	27	-8	13	8	15	0.67	0.17	-0.05
Pctl	29%	30%	10%	10%	50%	45%	22%	15%	30%	31%	57%	9%	81%	63%

Editor 702 is a power-packed young sire we used extensively. He had a WWR of 108 and YWR of 107. We appreciate his length and depth, which he passes on to his calves, as well as his good demeanor, and the added pounds on his calves at weaning. He has sons selling as Lots 5 and 8-23, and daughters sell as Lots 115, 126 and 130.

**VGW INTENSITY 714 Reg: 3764727 100% 1A**

Sire: 5L BOURNE 117-48A (1627789) MGS: VGW MEGATRON 141 (1444805)  
BW 83/105 WW 789/110 YW 1356/114 %IMF 5.00/120 REA 14.98/111 FAT 0.48/49

	HB	GM	CED	BW	WW	YW	MILK	ME	HPG	CEM	STAY	MARB	YG	REA
EPD	188	51	10	-0.9	73	117	22	-3	16	6	17	0.60	0.14	0.12
Pctl	22%	9%	76%	57%	8%	8%	60%	36%	6%	70%	41%	15%	65%	31%

VGW Intensity is one of the two young sire sons of 5L Bourne 117-48A in use. 714 had a WWR of 110, and YWR of 114. With a herd bull phenotype, and full of red meat his sons are long sided, thick and massive. We're excited about the calves out of his daughters. Sons sell as Lots 24-28.

**VGW AUTOMATIC 724 Reg: 3764673 100% 1A**

Sire: 5L BOURNE 117-48A (1627789) MGS: VGW NAVIGATOR 010 (1374368)  
BW 63/84 WW 708/99 YW 1174/99 %IMF 6.55/157 REA 13.10/97 FAT 0.52/37

	HB	GM	CED	BW	WW	YW	MILK	ME	HPG	CEM	STAY	MARB	YG	REA
EPD	234	51	15	-4.1	68	110	27	-4	17	7	21	0.77	0.22	-0.03
Pctl	1%	10%	26%	9%	17%	16%	23%	29%	3%	43%	4%	4%	94%	59%

VGW Automatic is by 5L Bourne, and we used these paternal half sibs for complimentary, look-the-same progeny. His across the board EPD values are outstanding, and he has one son in the sale, feature Lot 4.

**VGW ACCENT 656 Reg: 3554156 100% 1A**

Sire: BECKTON ACCENT B468 N3 (1705534) MGS: VGW MEGATRON 141 (1444805)  
BW 61/84 WW 721/101 YW 1147/100 %IMF 4.99/98 REA 11.62/93 FAT 0.23/107

	HB	GM	CED	BW	WW	YW	MILK	ME	HPG	CEM	STAY	MARB	YG	REA
EPD	211	47	19	-6.4	46	80	30	2	12	10	20	0.34	0.17	-0.11
Pctl	6%	62%	4%	1%	91%	79%	6%	69%	36%	12%	10%	59%	81%	75%

Accent 656 is an attractive son of Beckton Accent B468 N3. He's a super correct, clean fronted sire with a herd sire phenotype. His calves are born light, with strong HB, CED and BW EPD's, and his sons can be heifer pasture sires. Sons sell as Lots 93-96 and daughters sell as Lots 108, 117, 121 and 125.

**LJC ICEMAN 411D Reg: 3543821 100% 1A**

Sire: 5L TOPGUN 560-65B (1701524) MGS: LJC LANCER 806 (607513)  
BW 82/107 WW 692/102 YW 1241/113 %IMF 3.88/101 REA 11.93/102 FAT 0.27/77

	HB	GM	CED	BW	WW	YW	MILK	ME	HPG	CEM	STAY	MARB	YG	REA
EPD	162	50	15	-1.1	81	128	11	1	13	9	12	0.52	0.24	-0.07
Pctl	60%	13%	24%	53%	2%	3%	99%	60%	23%	15%	88%	24%	96%	67%

Iceman 411D was bred by Croissant Red Angus in Colorado, and we own an AI interest in him. He's a long sided, big quartered son of 5L Topgun 560-65B, with a 102 WWR and a 113 YWR. His progeny have moderate birth weights and heavy weaning data. Sons sell as Lots 77-85 and daughters sell as Lots 105, 113 and 131.

## REFERENCE SIRES



### 3SCC DOMAIN A163 Reg: 1619642 100% 1A

Sire: BECKTON DOMINOR T122 Z1 (1178633) MGS: BASIN HOBO 0545 (734639)  
BW 84/98 WW 655/109 YW 1233/113 %IMF 4.25/163 REA 14.89/102 FAT 0.44/149

	HB	GM	CED	BW	WW	YW	MILK	ME	HPG	CEM	STAY	MARB	YG	REA
EPD	268	52	15	-0.5	63	107	20	2	12	4	27	0.82	0.28	-0.12
Pctl	1%	4%	26%	66%	33%	21%	73%	68%	45%	93%	1%	3%	98%	77%

We own Domain A163 with Sonstegard Cattle Co. in Minnesota. He's a son of our VGW Navigator 010 herd sire, and A163 carries the look of his sire with body and thickness, and he's packed with performance. Sons sell as Lots 7, 52-61 and a daughter sells as Lot 133.



VGW Navigator 010  
Sire of 3SCC Navigator A448

### 3SCC NAVIGATOR A448 Reg: 1648436 100% 1A

Sire: VGW NAVIGATOR 010 (1374368) MGS: K F BANDOLIER 814 (1098134)  
BW 88/106 WW 569/106 YW 1110/108 %IMF 3.71/106 REA 14.11/103 FAT 0.39/74

	HB	GM	CED	BW	WW	YW	MILK	ME	HPG	CEM	STAY	MARB	YG	REA
EPD	212	48	16	-1.6	57	97	27	-3	13	9	19	0.47	0.30	-0.27
Pctl	5%	34%	16%	44%	56%	40%	21%	34%	32%	21%	11%	32%	99%	94%

Navigator A448 is a paternal half-sib to A163, also co-owned with Sonstegard Cattle Co. He's massive with extra length and performance he passes on to his sons, and HerdBuilder qualities that make his daughters exciting pasture cows. Sons sell as Lots 44-48 and a daughter sells as Lot 122.



### 3SCC DETAIL E87 Reg: 3766147 100% 1A

Sire: 3SCC DOMAIN A163 (1619642) MGS: 3SCC SENSATION R289 (1032136)  
BW 80/96 WW 715/107 YW 1247/103 %IMF 4.91/107 REA 14.42/110 FAT 0.38/81

	HB	GM	CED	BW	WW	YW	MILK	ME	HPG	CEM	STAY	MARB	YG	REA
EPD	253	49	15	-0.1	60	97	26	4	12	6	25	0.59	0.20	-0.12
Pctl	1%	22%	25%	73%	47%	41%	30%	84%	35%	65%	1%	16%	90%	77%

Detail E87 had a 107 WWR, with a 103 YWR and he's a son of Domain. His dam was 11 years old with a 103 MPPA, with 9 calves that ratio 100 BW, 105 WW and 103 YW. He's well balanced with top HerdBuilder and Stay EPD's. Co-owned with Sonstegard Cattle Co. Sons sell as Lots 101-102.



### 5L THE REAL DEAL 1687-143B Reg: 1701634 100% 1A

Sire: 5L DEFENDER 560-30Z (1549933) MGS: 5L DESTINATION 893-6215 (1048134)  
BW 78/96 WW 715/111 YW 1314/116 %IMF 4.52/92 REA 13.81/108 FAT 0.31/86

	HB	GM	CED	BW	WW	YW	MILK	ME	HPG	CEM	STAY	MARB	YG	REA
EPD	146	51	13	0.4	75	129	14	-6	15	8	10	0.71	0.08	0.19
Pctl	80%	8%	42%	81%	6%	3%	96%	18%	10%	38%	94%	7%	35%	21%

The Real Deal had a 111 WWR and 116 YWR bred at 5L Red Angus, Sheridan, MT. We have used him AI, and his performance EPD's are in the top quarter of the breed in GM, WW, YW, ME, HPG, Marb and REA. His sons are square and wide, power packed and full of red meat. Sons sell as Lots 2 and 62-71 with a daughter selling as Lot 111.



### 5L BOURNE FIRE 5353-52C Reg: 3483367 100% 1A

Sire: 5L BOURNE 117-48A (1627789) MGS: 5L BONFIRE 1715-126X (1379620)  
BW 74/108 WW 623/103 YW 1192/109 %IMF 4.72/94 REA 15.87/126 FAT 0.29/89

	HB	GM	CED	BW	WW	YW	MILK	ME	HPG	CEM	STAY	MARB	YG	REA
EPD	153	47	4	0.3	55	89	25	-5	16	-1	17	0.45	0.03	0.13
Pctl	72%	55%	99%	79%	66%	62%	40%	24%	6%	99%	34%	36%	16%	29%

Bourne Fire had a 103 WWR and 109 YWR, and his moderate size, extra length and strong thick quarter is passed along to his sons. Bred in the 5L program at Sheridan, MT, he has sons selling as Lots 86-89 and daughters sell as lots 103, 109 and 134.



### JACOBSON MOUNTAINEER 5076 Reg: 3498602 100% 1A

Sire: 5L MTN SIGN 435-10Z (1549522) MGS: 5L INDEPENDENCE 560-298Y (1450309)  
BW 84/101 WW 729/115 YW 1239/117 %IMF 2.76/95 REA 10.08/83 FAT 0.19/90

	HB	GM	CED	BW	WW	YW	MILK	ME	HPG	CEM	STAY	MARB	YG	REA
EPD	169	49	12	-0.4	76	125	25	-2	10	6	16	0.59	0.32	-0.23
Pctl	50%	31%	53%	68%	5%	4%	35%	36%	60%	69%	54%	16%	99%	91%

Mountaineer 5076 is a performance sire that we've used with great results. He had 115 WWR and 117 YWR, with a 729 Adj WW. His performance and carcass traits are breed leading, and he was bred in the Jacobson Red Angus herd in MN. Sons sell as Lots 1, 3 and 29-36.





## REFERENCE SIREs



### BECKTON ACCENT C537 N3 Reg: 3487542 100% 1A

Sire: BECKTON ACCENT W180 C2 (1331776) MGS: BECKTON NEBULA X353 E3 (1382739)  
BW 55/82 WW 613/107 YW 1161/109 %IMF 3.42/117 REA 13.17/105 FAT 0.22/108

	HB	GM	CED	BW	WW	YW	MILK	ME	HPG	CEM	STAY	MARB	YG	REA
EPD	226	48	20	-6.0	42	78	31	1	12	10	21	0.31	0.07	-0.01
Pctl	2%	40%	1%	1%	94%	81%	6%	59%	40%	11%	6%	66%	31%	55%

Accent N3 is out of a Beckton Nebula dam, one of the strong maternal dams we've used in past mating's. N3 is low maintenance, high growth, strong marbling, with strong CED and Stay EPD's. We co-own him with Beckton Red Angus at Sheridan, WY. He had a light BW of 55 lbs. Sons sell as Lots 90-92 and daughters are featured as Lots 107, 110, 118-119 and 127-129.

### BECKTON NEW ERA B446 E2 Reg: 1706010 100% 1A

Sire: BECKTON NEW ERA Y194 (1451309) MGS: BECKTON EPIC K6 S569 (1119032)  
BW 82/112 WW 601/115 YW 1217/114 %IMF 3.71/120 REA 10.55/85 FAT 0.24/88

	HB	GM	CED	BW	WW	YW	MILK	ME	HPG	CEM	STAY	MARB	YG	REA
EPD	179	48	11	1.0	60	102	32	4	9	4	19	0.37	0.26	-0.24
Pctl	34%	46%	69%	88%	44%	30%	3%	80%	78%	93%	14%	52%	97%	92%

New Era E2 is an established, high performing sire in our herd. We own him with Beckton's at Sheridan, WY. His maternal half brother is Mercy-Mercy, one of our established herd sires. He's top percentile in Milk and Stay EPD's, along with ADG and CW. Sons sell as Lots 97-99, and a daughter sells as Lot 123.

Beckton New Era Y194 - Sire of  
Beckton New Era B446 E2

### RREDS PIONEER 6904 Reg: 3585350 100% 1A

Sire: PIE CINCH 4126 (1725110) MGS: BASIN TREND SETTER 6074 (998634)  
BW 85 WW 754 YW 1389 %IMF 4.39/115 REA 15.01/103 FAT 0.20/124

	HB	GM	CED	BW	WW	YW	MILK	ME	HPG	CEM	STAY	MARB	YG	REA
EPD	182	47	11	-1.6	60	88	29	2	12	7	18	0.47	0.15	-0.10
Pctl	30%	64%	63%	44%	43%	62%	11%	66%	43%	58%	19%	32%	73%	73%

PIONEER 6904 had a great gain rate on test with 4.8 lbs./day. He's easy fleshing and will sure add pounds to his calf crops. His dam is from the extra maternal Primrose cow family. Sons sell as Lots 72-76, and Lot 106 is a feature heifer by him.

### RED U-2 RECKONING 294C Reg: 2585268 100%

Sire: RED U-2 RECKONING 149A (2519296) MGS: RED MINBURN COPENHAGEN 3Y (2400918)

	HB	GM	CED	BW	WW	YW	MILK	ME	HPG	CEM	STAY	MARB	YG	REA
EPD	177	46	9	-0.4	57	93	29	-12	9	6	19	0.29	0.16	0.07
Pctl	37%	71%	83%	68%	60%	51%	10%	6%	84%	72%	17%	71%	75%	40%

Reckoning 294C was bred in the Unger family U-2 program at Coaldale, AB. He's out of the popular U-2 Reckoning 149A, known for beautifully uddered daughters, and as sire of Denver National Western Red Angus Reserve Champion Female. Both sire and son breed consistent muscle shape and dark red color. Sons sell as Lots 49-51 and daughters are featured as Lots 104, 112, 120 and 132.

### PIE PAYWEIGHT 6348 Reg: 3592128 100% 1A

Sire: PIE PAYWEIGHT 418 (1724202) MGS: PIE CODE RED 9058 (1348362)  
BW 79/96 WW 614/93 YW 1306/105

	HB	GM	CED	BW	WW	YW	MILK	ME	HPG	CEM	STAY	MARB	YG	REA
EPD	174	48	11	-0.3	62	105	27	4	13	7	17	0.33	0.06	0.11
Pctl	41%	36%	72%	69%	37%	23%	24%	79%	28%	49%	41%	61%	25%	32%

Payweight 6348 sold in the Pieper Red Angus sale in 2017 to Lautenschlager Red Angus in WA. A smooth made sire, he is long bodied, with a 16+ REA measure. One son sells as Lot 100.

### KUHNS DEFENDER E035 Reg: 3831971 100% 1A

Sire: 5L DEFENDER 560-30Z (1549933) MGS: CONNEALY IMPRESSION (3317093)  
BW 80 WW 652 YW 1237 %IMF 2.90/94 REA 14.52/96 FAT 0.21/116

	HB	GM	CED	BW	WW	YW	MILK	ME	HPG	CEM	STAY	MARB	YG	REA
EPD	153	49	17	-3.2	53	87	23	-7	13	7	12	0.57	-0.09	0.11
Pctl	72%	24%	8%	18%	71%	66%	57%	17%	26%	45%	89%	18%	3%	32%

We purchased E035 from Kuhn's Red Angus in ND. His dam has a strong 104 MPPA, and is a substantial, top-producing dam. Defender E035 is thick and solid end to end, with light birth weight offspring. He has two daughters selling as Lots 116 and 124.



## SALE TERMS AND CONDITIONS

Except for those stated in the terms and conditions below, there are no warranties, either expressed or implied, as to the merchantability or fitness for a particular purpose with respect to the cattle being sold at this auction. The warranties and guarantees set forth in the "Terms and Conditions" are in lieu of all other warranties, either expressed or implied, and the remedies provided therein shall be the sole and exclusive remedy for the Buyer, or any party claiming through Buyer, for any breach of warranty or guarantee therein provided, and all other obligations or liabilities.

All cattle in this sale are offered according to the laws of the State wherein the sale is conducted. The right to bid, as provided under law, is reserved for all sellers unless otherwise announced.

### 1. BIDDING

The Auctioneer in charge will settle any disputes as to bids, and his decision on such matters shall be final.

### 2. TERMS

Terms of sale are cash unless satisfactory credit arrangements have been made with Sale Management prior to sale.

### 3. PURCHASER'S RISK

Each animal becomes the risk of the Buyer as soon as sold, but it shall be the obligation of the Seller to see that animals are fed and cared for free of charge to Buyer, until loaded for shipment or until the expiration of 48 hours after the sale, whichever occurs sooner.

### 4. CERTIFICATE OF REGISTRY

A transferred certificate of registry will be furnished to the Buyer for each registered animal.

### 5. HEALTH

All animals are eligible for interstate shipment, except as otherwise announced. Interstate health papers will be furnished for each animal requiring tuberculosis and brucellosis tests in accordance with Federal Regulations.

### 6. ANNOUNCEMENTS

Any changes from information of any kind in this catalog will be announced from the auction box and such announcements shall take precedence.

### 7. BULL AND FEMALE GUARANTEE

See specific guarantee information on page 2.

### 8. IDENTIFICATION

Each registered animal selling has a readable tattoo corresponding to its registration.

### 9. DEFAULT

In the event a Buyer defaults on payment, the Buyer shall be responsible for all costs, including attorney's fees, incurred by Seller or Sale Management, in connection with collecting, or attempts to collect, payment due.

### 10. GENETIC DEFECT AND PARENTAGE GUARANTEE

a. The parentage of all registered animals sold by the Seller is guaranteed to the extent that the animal is by the sire and out of the dam that is indicated on its registration papers.

All test results confirming an animal's genetic defect status must be disclosed to potential buyers prior to that animal's sale.

All cattle have met the RAAA requirements for registration as pertaining to genetic defects. In particular, animals containing a known genetic defect carrier in their two generation pedigree (parent or grandparent) without an intervening tested free animal have been tested for said genetic defect.

b. Credit of the registered animal's purchase price or replacement with an animal of equivalent value will be considered satisfactory settlement in the case of incorrect parentage or genetic defect information provided at the time of sale.

In no event will Seller be liable for any special, incidental, indirect, consequential (including without limitation; lost profits, lost value of progeny, embryos and/or semen, interruption of business), or punitive damages, even if Seller has been advised of the possibility of such loss or damage.

1. The Buyer will notify the Seller in writing immediately upon suspicion or verification that parentage or supplied genetic defect information is in error.

2. In cases of a returned animal: all expenses related to returning the animal to the Seller will be incurred by the Buyer, and the animal being returned must meet health requirements of the Seller's state.

### 11. RIGHTS AND OBLIGATIONS

a. The above terms and conditions of sale shall constitute a contract between the Buyer and Seller of each animal and shall be equally binding upon both. Each sale or resale of an animal constitutes a separate transaction.

b. Unless specifically stated herein, neither the Sale Management nor the Red Angus Association of America shall have any liability for any event or occurrence related in any manner to this sale.

### 12. LIABILITY

All persons who attend the sale do so at their own risk. Seller and Sale Management assume no responsibility for any mishaps of any kind of anyone who is at the ranch on sale day or who attends said sale.

### 13. SALE MANAGEMENT

Sale Management hereafter referred to pertains to Deichmann Livestock Brokerage. The information contained in this catalog and any subsequent publications was given to Sale Management by Seller(s). All activities performed by Sale Management are done as a service. Therefore, Sale Management assumes no liability for accuracy of information contained herein, or for representations or warranties of Seller(s), whether written, oral, express or implied. By attendance at the sale, each Buyer and Seller agrees to indemnify, defend, and hold harmless Sale Management and its respective officers, directors and agents of all claims, liabilities and costs arising out of or related to the auction held in conjunction with this catalog and sale. With respect to Sale Management, all warranties expressed or implied, of merchantability and fitness for a purpose with respect to the animals sold in connection with this catalog and/or sale, are hereby excluded and all incidental or consequential damages are hereby disclaimed.





## THANK YOU FOR YOUR ATTENDANCE



### RELY ON WESTPHAL RED ANGUS

- Providing dependable Red Angus genetics gives you reputable, high performance feeder calves, and productive replacement heifers that make profitable mother cows.

#### ONLY THE TOP END SELLS

- Our three pronged goals include a top end bull offering, highly maternal females and heavy "push down the scales" feeder calves. This selection pressure means 50% of the bulls are made steers and fed commercially for carcass data.

#### NO DATA OVERLOOKED

- Complete data on every lot is provided. EPD's, MPPA, ultrasound carcass for RE, FAT and %IMF. Bulls are fertility tested with scrotal measurements.

#### SALE DAY – COME VIST AND SEE THE VGW COWHERD

- MARCH 25, 2020. Have lunch, walk through the sale bulls and females, and take a look at the cowherd. Call if you can't make it to the sale.

All sight unseen purchases sell satisfaction guaranteed.

#### FREE DELIVERY

- Delivery on bulls is free in Montana and adjoining states, OR haul your own and receive a rebate. Details on page 1.

#### DEICHMANN LIVESTOCK PURCHASING WESTPHAL FEEDERS

- Feeder procurement service to our customers. Over the past 30 years Deichmann Livestock has placed thousands of our customer's calves. They are readily accepted throughout the feeding industry and DLB bids and purchases VGW-sired feeders every year.







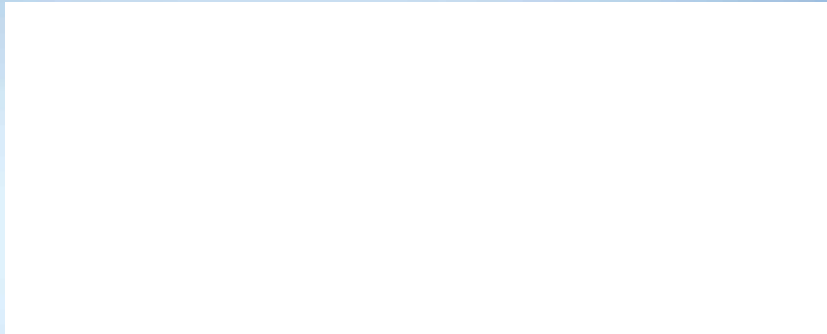
**DEICHMANN LIVESTOCK BROKERAGE**

Dan & Marilyn Deichmann  
P.O. Box 310 • Hobson, MT 59452  
406-423-5500 • 406-423-5640 Fax

ADDRESS SERVICE REQUESTED

**First Class Mail**

**FIRST CLASS MAIL  
AUTO  
US POSTAGE PAID  
LEWISTOWN, MT  
PERMIT 181**



**SELLING 177 HEAD**

**102 BULLS**  
Yearling Bulls

**Sell Satisfaction Guaranteed**

**75 FEMALES**  
Registered and Commercial

**Sell Guaranteed to Breed**

