



CMIT SOUTH  
ELEMENTARY  
PTO



GENERAL  
MEETING

1.12.22



CMIT SOUTH  
ELEMENTARY

**P T O**



# AGENDA

- WELCOME
- TREASURER'S REPORT & FUNDRAISING GOALS
- PTO BOARD ELECTIONS | 2022-2024
- FUNDRAISERS
- UPCOMING EVENTS & IMPORTANT DATES
- PTO INFORMATION
- MILLER'S CORNER



CMIT SOUTH  
ELEMENTARY

PTO



# TREASURER'S REPORT

- Beginning Balance: \$19,299.24
- Total Expenditures (last 30 days): \$1,891.40
- Ending Balance: \$18,870.32
- Fundraising Goal - \$25,000.00
- 501(C)(3) Status
  - All documentation has been filed with the IRS as of December 15, 2021.
  - The PTO Board is currently awaiting a response from the IRS.



**CMIT SOUTH  
ELEMENTARY  
PTO**



# PTO BOARD ELECTIONS SY 22-24



CMIT SOUTH  
ELEMENTARY  
PTO

## TENTATIVE BOARD ELECTIONS TIMELINE

- February 2022 – The proposed new Board structure will be presented to PTO Members at the February General PTO Meeting.
- March 2022 – PTO Members will vote on the proposed new Board structure and consequent changes in Bylaws.
- Detailed information on all board seats will be published for anyone wishing to run for office.
- April 2022 – Candidates will submit a 1-3 minute video to include an introduction and qualifications for the position they are interested in applying.
- May 2022 – Voting by Electronic Ballot & New Board Introductions at PTO Meeting.
- Transition Meeting – June 28, 2022





# FUNDRAISERS



CMIT SOUTH  
ELEMENTARY  
PTO

The PTO will kick off the following fundraisers this quarter:

- PTO MEMBERSHIP | Ongoing throughout the school year
- Double Good Popcorn | February 24 – February 28, 2022
- Lifetouch Spring Pictures | April 2022
- Book Fair | TBD



**UPCOMING  
EVENTS &  
IMPORTANT  
DATES**

**SCHOOL CLOSURES**

**MLK Holiday | 1.17.22**

**3-Hr Early Dismissal | 1.21.22**

***2-Hr Early Dismissal | 2.3.22***

**IMPORTANT DATES**

**Picture Day Makeup | 1.27.22**

**Pep Rally | 1.28.22**

**February PTO General Meeting | 2.9.22**

# PTO INFORMATION





# PTO MISSION & VISION

## MISSION

*Connecting  
Motivating  
Innovative  
Technology*



## VISION

*STRONGER TOGETHER THROUGH  
ANY CHALLENGE.*





CMIT SOUTH  
ELEMENTARY  
PTO



# FIVE PILLARS OF SUCCESS

1. Inspire Team Commitment and Foster Tiger Spirit, Tiger Pride and Tiger Trust.
2. Promote Connectivity and Engagement through Fundraising and Social Interaction.
3. Motivate and Integrate Teams to further the mission and vision of CMIT South ES through STEAM activities.
4. Develop Partnerships with our fellow CMIT Schools and the local Community.
5. Implement Succession Planning Structure for incoming PTO Members for SY 20-22.



# CMITES PTO BOARD



CMIT SOUTH  
ELEMENTARY  
PTO

## PTO BOARD DIRECTORY

pto@cmitsouthes.org



CMIT SOUTH  
ELEMENTARY  
PTO

**Deniece McDowell**  
*President*

dkawills@icloud.com



**Trina Aime**  
*Vice President*

trjenkins22@aol.com



**Danielle Tyler**  
*Treasurer*

daniellecmpt@gmail.com



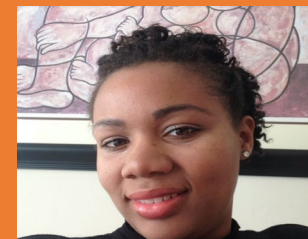
**Tasya Bracey**  
*Communications Officer*

tasyacmitspto@gmail.com



**Joni Turner**  
*Corresponding Officer*

joni59@gmail.com



Erika Herbert  
Teacher Liaison



Amy Derfler  
Teacher Liaison

# CMIT ADMIN



CMIT SOUTH  
ELEMENTARY  
PTO



Ronald Miller, Jr., Principal



Lesma Watkis, Assistant Principal



Tauheedah Lewis, Assistant Principal





# PTO MEMBERSHIP



CMIT SOUTH  
ELEMENTARY  
PTO

## JOIN THE PTO

### How do I join the PTO?

- Via the PTO website, [www.cmitsouthespto.org](http://www.cmitsouthespto.org)
- Each teacher has been assigned a code and password.
- The Membership Contest ends October 8, 2021!
- The class with the highest number of registrations will receive a prize for both students and the teacher.

### How much are dues?

- Families \$20.00 | Individuals - \$10.00.
- Credit card payments are accepted via the PTO website.

### I would like more information....

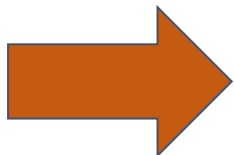
- The PTO has created a one pager that can be found on the PTO website. We hope this document will give you more insight and answer any questions.
- We are always available via any of the PTO social accounts, email or phone to answer any questions.

VISIT  
[cmitsouthespto.org](http://cmitsouthespto.org)  
**CLICK!**  
JOIN THE PTO



Enter the classroom  
code & password.  
**ANNUAL DUES:**  
\$10.00 per adult or  
\$20.00 for family

*30 day contest*  
THE CLASS WITH  
THE MOST  
REGISTRATIONS  
WINS A PRIZE!



**TEACHERS AND STAFF ARE ENCOURAGED TO JOIN THE PTO**



# PTO MEMBERSHIP



CMIT SOUTH  
ELEMENTARY  
PTO

## CLASS CODES

### Kindergarten

<u>Teacher</u>	<u>Class Code</u>	<u>Password</u>
DERFLER	K-02	gme5xBHb
HERBERT	K-03	RW9LQq2E
MADISON	K-04	ZRj8pcf
WILLIAMS	K-01	0qvAk5Jm

### First

<u>Teacher</u>	<u>Class Code</u>	<u>Password</u>
BROWN	1-11	bRWPS7qF
CURTIS	1-14	GdEZQ7cz
GREGORY	1-12	h7Pib0uH
LIBEBE	1-13	hs6wFGc5

## CLASS CODES

### Second

<u>Teacher</u>	<u>Class Code</u>	<u>Password</u>
BOGESS	2-24	kR9yLCzS
PHILLIPS	2-22	sB9CNuAv
ROWLAND	2-21	CyQuR8mk
VALERA	2-23	Uu8SAip2

### Third

<u>Teacher</u>	<u>Class Code</u>	<u>Password</u>
BALOGUN	3-33	W1UBDRgx
FLEET	3-34	CdFNKw4k
MATHEWS	3-32	g61myc8H
MCDONAGH	3-31	c9og2YCz

## CLASS CODES

### Fourth

<u>Teacher</u>	<u>Class Code</u>	<u>Password</u>
CRUSOE	4-42	h75bj3Mg
HOLLOWAY	4-43	VxB9khtg
JONES	4-44	sHMPVbi7
PAVIGNANO	4-41	WU3Xc4j5

### Fifth

<u>Teacher</u>	<u>Class Code</u>	<u>Password</u>
JACKSON	5-51	o2cpC1iE
MCCARGO	5-52	Po2SfbFJ
PINKARD	5-53	C7Zfw2cA



# PTO MEMBERSHIP



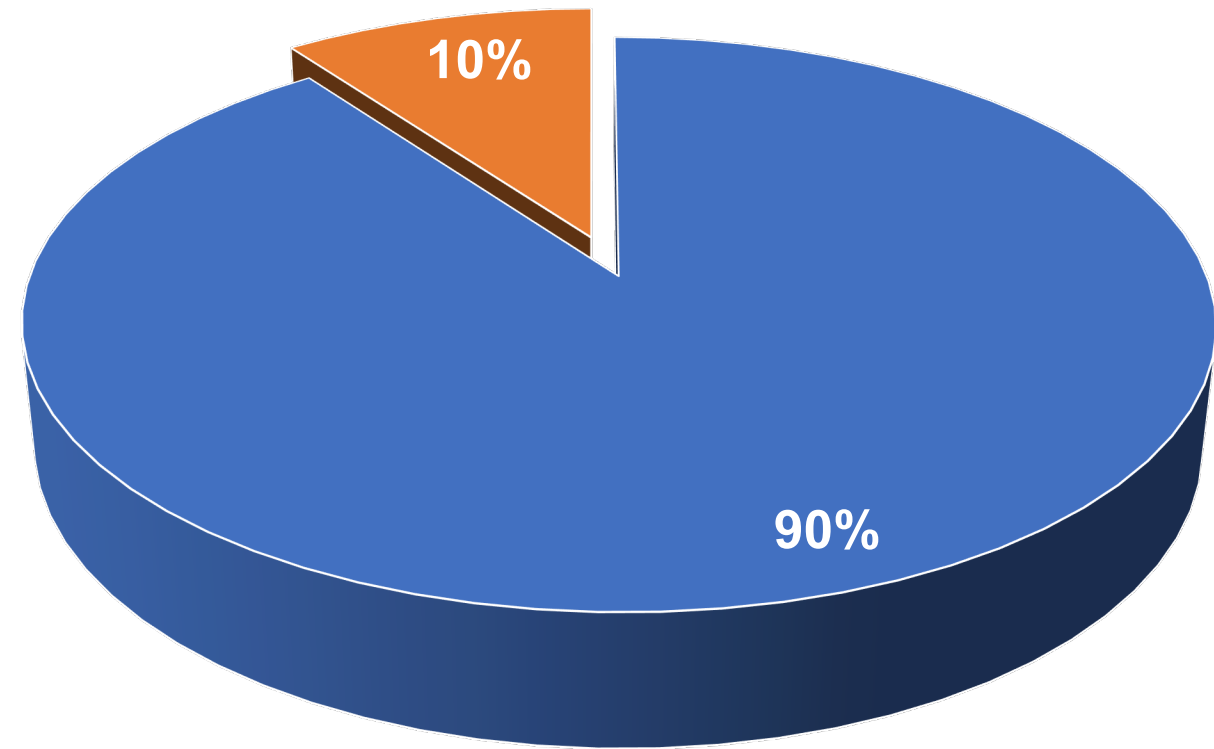
CMIT SOUTH  
ELEMENTARY  
PTO

## PTO MEMBERSHIP

Your PTO dues, PTO donations and fundraisers fund the yearly PTO budget. Without this financial support, the PTO cannot provide essential financial assistance to the school and help bridge gaps in funding from the county and the Foundation.

Dues can be paid at any time.

We will extend the Membership Drive and announce a winner in November in hopes of greater participation.



■ Enrolled Students | 563

■ Paid PTO Memberships | 63

**COMMUNICATION  
IS KEY!**

**IT IS OUR GOAL TO  
SHARE INFORMATION  
AND ADDRESS YOUR  
CONCERNS.**

**WE WANT YOU  
TO STAY INVOLVED!!**

**PTO ANNOUNCEMENTS & NEWS ARE SHARED VIA  
THE PLATFORMS LISTED BELOW.**

**Follow us on Facebook and Instagram to stay  
active with the PTO Community.**

**FACEBOOK | @PTOCMITSES  
INSTAGRAM | @PTOCMITSES  
TWITTER | @PCMITSES**

**CLASS DOJO**

**CLASSROOM PARENT**

**Announcements and news are sent via email and text.  
Parents must opt in to receive messages from  
Classroom Parent.**

**PTO WEBSITE | [www.cmitsouthespto.org](http://www.cmitsouthespto.org)**

**EMAIL | [pto@cmitsouthes.org](mailto:pto@cmitsouthes.org)**

**PHONE | 202.810.2250**







**PTO GENERAL  
BODY MEETINGS  
ARE HELD ON  
THE 2<sup>ND</sup>  
WEDNESDAY OF  
EACH MONTH!**

- Meetings begin promptly at 6:00 pm and end at 7:00 pm.
- Meetings will be held virtually via Zoom and are recorded.
- Robert's Rules of Order governs our meetings.





# Community Engagement



CMIT SOUTH  
ELEMENTARY  
PTO

## Grade-Level GroupMe Chat Groups

- An opportunity to connect and engage with parents within your student's grade level.
- Email name, cell number, child's name and grade to [PTO@cmitsouthes.org](mailto:PTO@cmitsouthes.org).



**PGCPS**

**VOLUNTEER  
REQUIREMENTS**

- Fingerprinting must be completed at least 15 days prior to volunteering event.
- Child Protective Services Background check must be completed at least 15 days prior to volunteer activity.
- Safe Schools Training Modules must be completed each school year prior to engaging in any volunteer activity. Go to [www.pgcps.org](http://www.pgcps.org) to access this training.
- Fee is \$62.25 for fingerprinting and background check.
- Location – Appt Only: Sasscer Administrative Bldg, 14201 School Lane Room, #128, Upper Marlboro, MD 20774. Phone: 410-707-1657/  
410 -962-118 ext. 49.



CMIT SOUTH  
ELEMENTARY  
PTO



QUESTIONS???

[www.cmitsouthespto.org](http://www.cmitsouthespto.org)



CMIT SOUTH  
ELEMENTARY  
PTO

## MILLER'S CORNER