



CMIT SOUTH
ELEMENTARY
PTO



**GENERAL
MEETING**

11.10.21



CMIT SOUTH
ELEMENTARY

P T O



AGENDA

- **HAPPY VETERAN'S DAY**
- **TREASURER'S REPORT**
- **PTO MEMBERSHIP DRIVE & MEMBERSHIP**
- **CURRENT VOLUNTEER OPPORTUNITIES**
- **VOLUNTEER REQUIREMENTS**
- **FUNDRAISERS**
- **UPCOMING EVENTS & IMPORTANT DATES**
- **COMMUNITY ENGAGEMENT**
- **IMPORTANT DATES**

HAPPY **VETERANS** DAY





CMIT SOUTH
ELEMENTARY
PTO



TREASURER'S REPORT

- Beginning Balance: 10.04.21 -\$21,762.17
- Total Expenditures as of 11.02.21 - \$785.45
- Ending Balance: 10.29.2021 -\$20,976.72
- 2021-2022 Fundraising Goal - \$20,000.00
- 501(c)(3) Status
 - The PTO has retained the services of Vision Catalyst to secure IRS tax-exempt status.
 - The LLC has been created and paperwork filed for incorporation as of Nov 8, 2021.



PTO MEMBERSHIP DRIVE

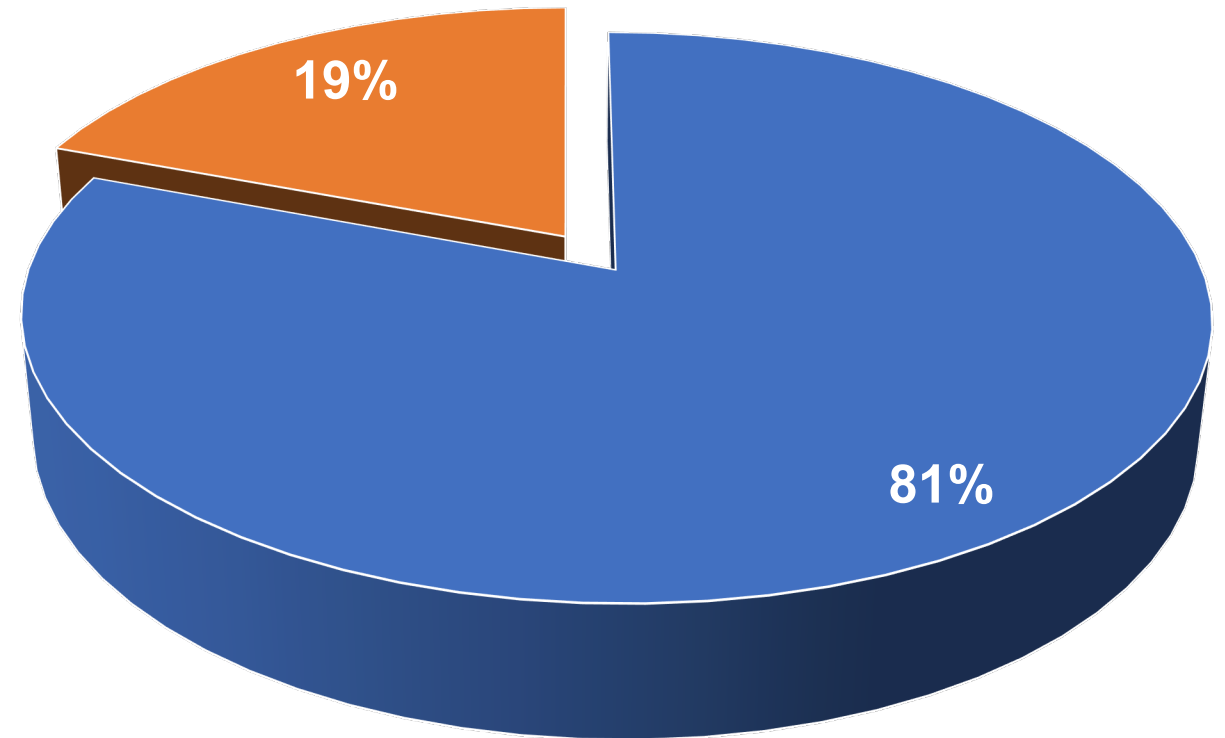


CMIT SOUTH
ELEMENTARY
PTO

Your PTO dues, donations and participation in fundraisers fund the yearly PTO budget. Without this financial support, the PTO cannot provide essential financial assistance to the school and help bridge gaps in funding from the county and the Foundation.

Dues are annual and can be paid at any time for the school year.

PTO MEMBERSHIP AS OF NOVEMBER 10, 2021



■ Enrolled Students | 563

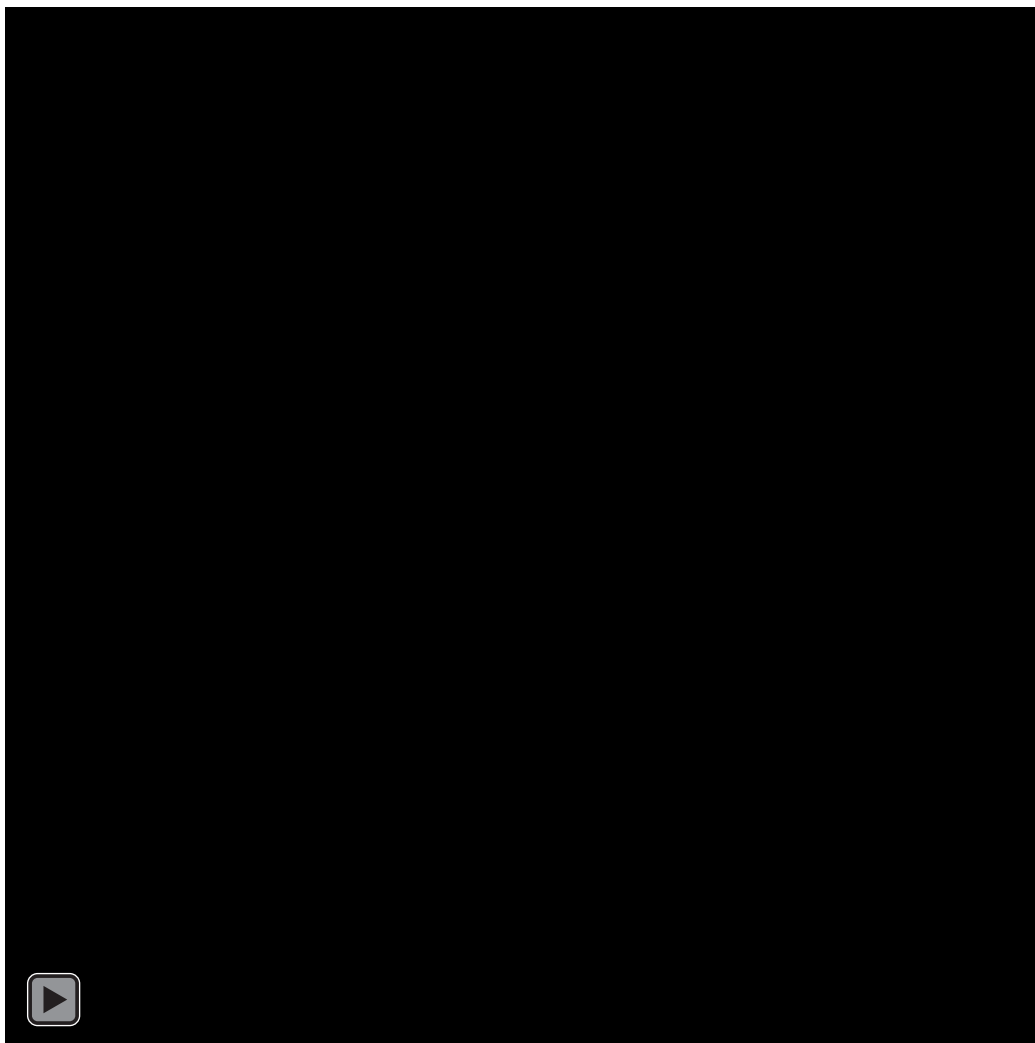
■ Paid PTO Memberships | 135



MEMBERSHIP DRIVE WINNER!!



CMIT SOUTH
ELEMENTARY
PTO





PTO MEMBERSHIP



CMIT SOUTH
ELEMENTARY
PTO

JOIN THE PTO

How do I join the PTO?

- Via the PTO website, www.cmitsouthespto.org
- Each teacher has been assigned a code and password.
- The Membership Contest ends October 8, 2021!
- The class with the highest number of registrations will receive a prize for both students and the teacher.

How much are dues?

- Families \$20.00 | Individuals - \$10.00.
- Credit card payments are accepted via the PTO website.

I would like more information....

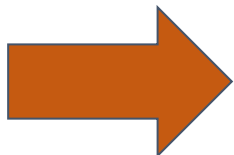
- The PTO has created a one pager that can be found on the PTO website. We hope this document will give you more insight and answer any questions.
- We are always available via any of the PTO social accounts, email or phone to answer any questions.

VISIT
cmitsouthespto.org
CLICK!
JOIN THE PTO



Enter the classroom
code & password.
ANNUAL DUES:
\$10.00 per adult or
\$20.00 for family

30 day contest
THE CLASS WITH
THE MOST
REGISTRATIONS
WINS A PRIZE!



TEACHERS AND STAFF ARE ENCOURAGED TO JOIN THE PTO



PTO MEMBERSHIP



CMIT SOUTH
ELEMENTARY
PTO

CLASS CODES

Kindergarten

<u>Teacher</u>	<u>Class Code</u>	<u>Password</u>
DERFLER	K-02	gme5xBHb
HERBERT	K-03	RW9LQq2E
MADISON	K-04	ZRj8pcf
WILLIAMS	K-01	0qvAk5Jm

First

<u>Teacher</u>	<u>Class Code</u>	<u>Password</u>
BROWN	1-11	bRWPS7qF
CURTIS	1-14	GdEZQ7cz
GREGORY	1-12	h7Pib0uH
LIBEBE	1-13	hs6wFGc5

CLASS CODES

Second

<u>Teacher</u>	<u>Class Code</u>	<u>Password</u>
BOGESS	2-24	kR9yLCzS
PHILLIPS	2-22	sB9CNuAv
ROWLAND	2-21	CyQuR8mk
VALERA	2-23	Uu8SAip2

Third

<u>Teacher</u>	<u>Class Code</u>	<u>Password</u>
BALOGUN	3-33	W1UBDRgx
FLEET	3-34	CdFNKw4k
MATHEWS	3-32	g61myc8H
MCDONAGH	3-31	c9og2YCz

CLASS CODES

Fourth

<u>Teacher</u>	<u>Class Code</u>	<u>Password</u>
CRUSOE	4-42	h75bj3Mg
HOLLOWAY	4-43	VxB9khtg
JONES	4-44	sHMPVbi7
PAVIGNANO	4-41	WU3Xc4j5

Fifth

<u>Teacher</u>	<u>Class Code</u>	<u>Password</u>
JACKSON	5-51	o2cpC1iE
MCCARGO	5-52	Po2SfbFJ
PINKARD	5-53	C7Zfw2cA



CMIT SOUTH
ELEMENTARY
PTO

VOLUNTEER PARENT PATROLS



ARRIVAL & DISMISSAL



REQUIREMENTS

ARRIVAL VOLUNTEER TIMES
7:00 AM - 8:00 AM

DISMISSAL VOLUNTEER TIMES
2:00 PM - 3:00 PM

Must be vaccinated and show proof.

Must have background check &
fingerprinting completed along with
Safe Schools training as required by
PGCPS.

QUESTIONS:
CONTACT THE PTO
PTO@CMITSOUTHES.ORG
or 202.810.2250

CURRENT VOLUNTEER OPPORTUNITY PARENT PATROLS

- We are seeking Volunteers to assist with Drop-Off and Dismissal.
- Volunteer times for Drop Off - 7:00 a.m. – 8:00 a.m.
- Volunteer times for Dismissal - 2:00 p.m. -3:00 p.m.
- Sign up:
<https://cmitses.classroomparent.com/events/16048/volunteering>
- Volunteers must have completed PGCPS Volunteer Requirements and show proof of Safe Schools Training and background check.
- Volunteers must be vaccinated and show proof.



PGCPS

VOLUNTEER REQUIREMENTS

- Fingerprinting must be completed at least 15 days prior to volunteering event.
- Child Protective Services Background check must be completed at least 15 days prior to volunteer activity.
- Safe Schools Training Modules must be completed each school year prior to engaging in any volunteer activity. Go to www.pgcps.org to access this training.
- Fee is \$62.25 for fingerprinting and background check.
- Location – Appt Only: Sasscer Administrative Bldg, 14201 School Lane Room, #128, Upper Marlboro, MD 20774. Phone: 410-707-1657/
410 -962-118 ext. 49.



FUNDRAISERS



CMIT SOUTH
ELEMENTARY
PTO

CURRENT

CHESAPEAKE
MATH & IT ACADEMY
CMIT SOUTH
ELEMENTARY
PTO

NOVEMBER FUNDRAISERS

INDIAN RIVER
FRUIT SALE
11.1.21 - 11.12.21

HONEYBAKED
HAM
11.2.21 - 11.15.21

KRISPY KREME
DIGITAL
DOZENS

TO PARTICIPATE VISIT
WWW.CMITSOUTHESPTO.ORG

CURRENT SCHOOL FUNDRAISER

- **READ-A-THON | NOW – DECEMBER 12, 2021**

UPCOMING

- **HEART MONTH ASSOCIATION KICK-OFF | NOVEMBER 23, 2021**
- **DOUBLE GOOD POPCORN | DECEMBER 6-10, 2021**

ONGOING

- **PTO Membership**
- **Krispy Kreme Digital Dozens**

CONCLUDED

- **FOLLETT BOOK FAIR**
- **LIFETOUCH SCHOOL PICTURES | pictures will be delivered to the school unless you opted to have your photos m**



UPCOMING EVENTS AND IMPORTANT DATES

SCHOOL CLOSURES

2Hr Early Dismissal | 11.17.21

***Thanksgiving Break* | 11.24.21 – 11.26.21**

IMPORTANT DATES

Men Make a Difference Day | 11.11.21

Veterans Day | 11.11.21

Pep Rally | 11.23.21

December PTO General Meeting | 12.8.21



**MARK YOU
CALENDAR**

**PTO MEETING
DATES**



**CMIT SOUTH
ELEMENTARY
PTO**

PTO MEETINGS



2021 MEETINGS

WEDNESDAY, DECEMBER 8, 2021

2022 MEETINGS

WEDNESDAY, JANUARY 12, 2022

WEDNESDAY, FEBRUARY 9, 2022

WEDNESDAY, MARCH 9, 2022

WEDNESDAY, APRIL 13, 2022

WEDNESDAY, MAY 11, 2022

WEDNESDAY, JUNE 8, 2022

PTO INFORMATION



**COMMUNICATION
IS KEY!**

**IT IS OUR GOAL TO
SHARE INFORMATION
AND ADDRESS YOUR
CONCERNS.**

**WE WANT YOU
TO STAY INVOLVED!!**

**PTO ANNOUNCEMENTS & NEWS ARE SHARED VIA
THE PLATFORMS LISTED BELOW.**

**Follow us on Facebook and Instagram to stay
active with the PTO Community.**

**FACEBOOK | @PTOCMITSES
INSTAGRAM | @PTOCMITSES
TWITTER | @PCMITSES**

CLASS DOJO

CLASSROOM PARENT

**Announcements and news are sent via email and text.
Parents must opt in to receive messages from
Classroom Parent.**

PTO WEBSITE | www.cmitsouthespto.org

EMAIL | pto@cmitsouthes.org

PHONE | 202.810.2250



PTO MISSION & VISION

MISSION

*Connecting
Motivating
Innovative
Technology*

VISION

*STRONGER TOGETHER THROUGH
ANY CHALLENGE.*





CMITES PTO BOARD



CMIT SOUTH
ELEMENTARY
PTO

PTO BOARD DIRECTORY

pto@cmitsouthes.org



CMIT SOUTH
ELEMENTARY
PTO

Deniece McDowell
President

dkawills@icloud.com



Trina Aime
Vice President

trjenkins22@aol.com



Danielle Tyler
Treasurer

daniellecmityo@gmail.com



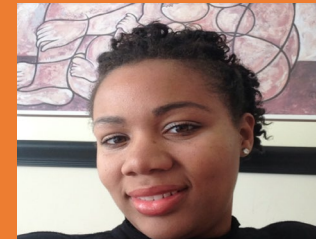
Tasya Bracey
Communications Officer

tasyacmitspto@gmail.com



Joni Turner
Corresponding Officer

joni59@gmail.com



Erika Herbert
Teacher Liaison



Amy Derfler
Teacher Liaison

CMIT ADMINISTRATION



CMIT SOUTH
ELEMENTARY
PTO



Ronald Miller, Jr., Principal



Lesma Watkis, Assistant Principal



Tauheedah Lewis, Assistant Principal





CMIT SOUTH
ELEMENTARY
PTO



FIVE PILLARS OF SUCCESS

1. Inspire Team Commitment and Foster Tiger Spirit, Tiger Pride and Tiger Trust.
2. Promote Connectivity and Engagement through Fundraising and Social Interaction.
3. Motivate and Integrate Teams to further the mission and vision of CMIT South ES through STEAM activities.
4. Develop Partnerships with our fellow CMIT Schools and the local Community.
5. Implement Succession Planning Structure for incoming PTO Members for SY 20-22.



**PTO GENERAL
BODY MEETINGS
ARE HELD ON
THE 2ND
WEDNESDAY OF
EACH MONTH!**

- Meetings begin promptly at 6:00 pm and end at 7:00 pm.
- Meetings will be held virtually via Zoom and are recorded.
- Robert's Rules of Order governs our meetings.





Community Engagement



CMIT SOUTH
ELEMENTARY
PTO

Grade-Level GroupMe Chat Groups

- An opportunity to connect and engage with parents within your student's grade level.
- Email name, cell number, child's name and grade to PTO@cmitsouthes.org.



CMIT SOUTH
ELEMENTARY
PTO



QUESTIONS???

www.cmitsouthespto.org

MILLER'S CORNER



CMIT SOUTH
ELEMENTARY
PTO

