



CMIT SOUTH  
ELEMENTARY  
PTO

CMIT SOUTH ELEMENTARY SCHOOL  
PTO GENERAL MEETING

OCTOBER 13, 2021



CMIT SOUTH  
ELEMENTARY  
**P T O**



# AGENDA

- WELCOME
- PTO TEAM INTRODUCTION
- CMIT ADMIN STAFF INTRODUCTION
- PTO GENERAL MEETINGS
- TREASURER'S REPORT
- COMMUNICATION
- PTO MEMBERSHIP
- COMMITTEES
- VOLUNTEERING
- FUNDRAISERS
- COMMUNITY ENGAGEMENT
- IMPORTANT DATES

**WELCOME!!!  
STUDENTS,  
PARENTS,  
TEACHERS,  
ADMINISTRATION &  
STAFF**

## MISSION

*Connecting  
Motivating  
Innovative  
Technology*

## VISION

*STRONGER TOGETHER THROUGH  
ANY CHALLENGE.*





CMIT SOUTH  
ELEMENTARY

PTO



# FIVE PILLARS OF SUCCESS

1. Inspire Team Commitment and Foster Tiger Spirit, Tiger Pride and Tiger Trust.
2. Promote Connectivity and Engagement through Fundraising and Social Interaction.
3. Motivate and Integrate Teams to further the mission and vision of CMIT South ES through STEAM activities.
4. Develop Partnerships with our fellow CMIT Schools and the local Community.
5. Implement Succession Planning Structure for incoming PTO Members for SY 20-22.





# CMITES PTO BOARD



CMIT SOUTH  
ELEMENTARY  
PTO

## PTO BOARD DIRECTORY

pto@cmitsouthes.org



CMIT SOUTH  
ELEMENTARY  
PTO

**Deniece McDowell**  
*President*

dkawills@icloud.com



**Trina Aime**  
*Vice President*

trjenkins22@aol.com



**Danielle Tyler**  
*Treasurer*

daniellecmptto@gmail.com



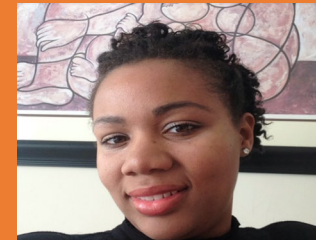
**Tasya Bracey**  
*Communications Officer*

tasyacmitspto@gmail.com



**Joni Turner**  
*Corresponding Officer*

joni59@gmail.com



Erika Herbert  
Teacher Liaison



Amy Derfler  
Teacher Liaison

# CMIT ADMIN INTRODUCTIONS



CMIT SOUTH  
ELEMENTARY  
PTO



Ronald Miller, Jr., Principal



Lesma Watkis, Assistant Principal



Tauheedah Lewis, Assistant Principal





**PTO GENERAL  
BODY MEETINGS  
ARE HELD ON  
THE 2<sup>ND</sup>  
WEDNESDAY OF  
EACH MONTH!**

- Meetings begin promptly at 6:00 pm and end at 7:00 pm.
- Meetings will be held virtually via Zoom and are recorded.
- Robert's Rules of Order governs our meetings.







CMIT SOUTH  
ELEMENTARY  
PTO



# TREASURER'S REPORT

- Beginning Balance: 9.1.21 -\$23,175.63
- Total Expenditures to Date - \$3,976.05
- Ending Balance: 10/13/2021 -\$21,483.71
- Fundraising Goal - \$20,000.00
- Money raised -\$2,284.13
- 501C3 Status



**COMMUNICATION  
IS KEY!**

**IT IS OUR GOAL TO  
SHARE INFORMATION  
AND ADDRESS YOUR  
CONCERNS.**

**WE WANT YOU  
TO STAY INVOLVED!!**

**PTO ANNOUNCEMENTS & NEWS ARE SHARED VIA  
THE PLATFORMS LISTED BELOW.**

**Follow us on Facebook and Instagram to stay  
active with the PTO Community.**

**FACEBOOK | @PTOCMITSES  
INSTAGRAM | @PTOCMITSES  
TWITTER | @PCMITSES**

**CLASS DOJO**

**CLASSROOM PARENT**

**Announcements and news are sent via email and text.  
Parents must opt in to receive messages from  
Classroom Parent.**

**PTO WEBSITE | [www.cmitsouthespto.org](http://www.cmitsouthespto.org)**

**EMAIL | [pto@cmitsouthes.org](mailto:pto@cmitsouthes.org)**

**PHONE | 202.810.2250**





# PTO MEMBERSHIP



CMIT SOUTH  
ELEMENTARY  
PTO

## JOIN THE PTO

### How do I join the PTO?

- Via the PTO website, [www.cmitsouthespto.org](http://www.cmitsouthespto.org)
- Each teacher has been assigned a code and password.
- The Membership Contest ends October 8, 2021!
- The class with the highest number of registrations will receive a prize for both students and the teacher.

### How much are dues?

- Families \$20.00 | Individuals - \$10.00.
- Credit card payments are accepted via the PTO website.

### I would like more information....

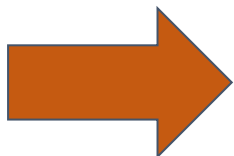
- The PTO has created a one pager that can be found on the PTO website. We hope this document will give you more insight and answer any questions.
- We are always available via any of the PTO social accounts, email or phone to answer any questions.

VISIT  
[cmitsouthespto.org](http://cmitsouthespto.org)  
**CLICK!**  
JOIN THE PTO



Enter the classroom  
code & password.  
ANNUAL DUES:  
\$10.00 per adult or  
\$20.00 for family

*30 day contest*  
THE CLASS WITH  
THE MOST  
REGISTRATIONS  
WINS A PRIZE!



**TEACHERS AND STAFF ARE ENCOURAGED TO JOIN THE PTO**



# PTO MEMBERSHIP



CMIT SOUTH  
ELEMENTARY  
PTO

## CLASS CODES

### Kindergarten

<u>Teacher</u>	<u>Class Code</u>	<u>Password</u>
DERFLER	K-02	gme5xBHb
HERBERT	K-03	RW9LQq2E
MADISON	K-04	ZRj8pcf
WILLIAMS	K-01	0qvAk5Jm

### First

<u>Teacher</u>	<u>Class Code</u>	<u>Password</u>
BROWN	1-11	bRWPS7qF
CURTIS	1-14	GdEZQ7cz
GREGORY	1-12	h7Pib0uH
LIBEBE	1-13	hs6wFGc5

## CLASS CODES

### Second

<u>Teacher</u>	<u>Class Code</u>	<u>Password</u>
BOGCESS	2-24	kR9yLCzS
PHILLIPS	2-22	sB9CNuAv
ROWLAND	2-21	CyQuR8mk
VALERA	2-23	Uu8SAip2

### Third

<u>Teacher</u>	<u>Class Code</u>	<u>Password</u>
BALOGUN	3-33	W1UBDRgx
FLEET	3-34	CdFNKw4k
MATHEWS	3-32	g61myc8H
MCDONAGH	3-31	c9og2YCz

## CLASS CODES

### Fourth

<u>Teacher</u>	<u>Class Code</u>	<u>Password</u>
CRUSOE	4-42	h75bj3Mg
HOLLOWAY	4-43	VxB9khtg
JONES	4-44	sHMPVbi7
PAVIGNANO	4-41	WU3Xc4j5

### Fifth

<u>Teacher</u>	<u>Class Code</u>	<u>Password</u>
JACKSON	5-51	o2cpC1iE
MCCARGO	5-52	Po2SfbFJ
PINKARD	5-53	C7Zfw2cA



# PTO MEMBERSHIP



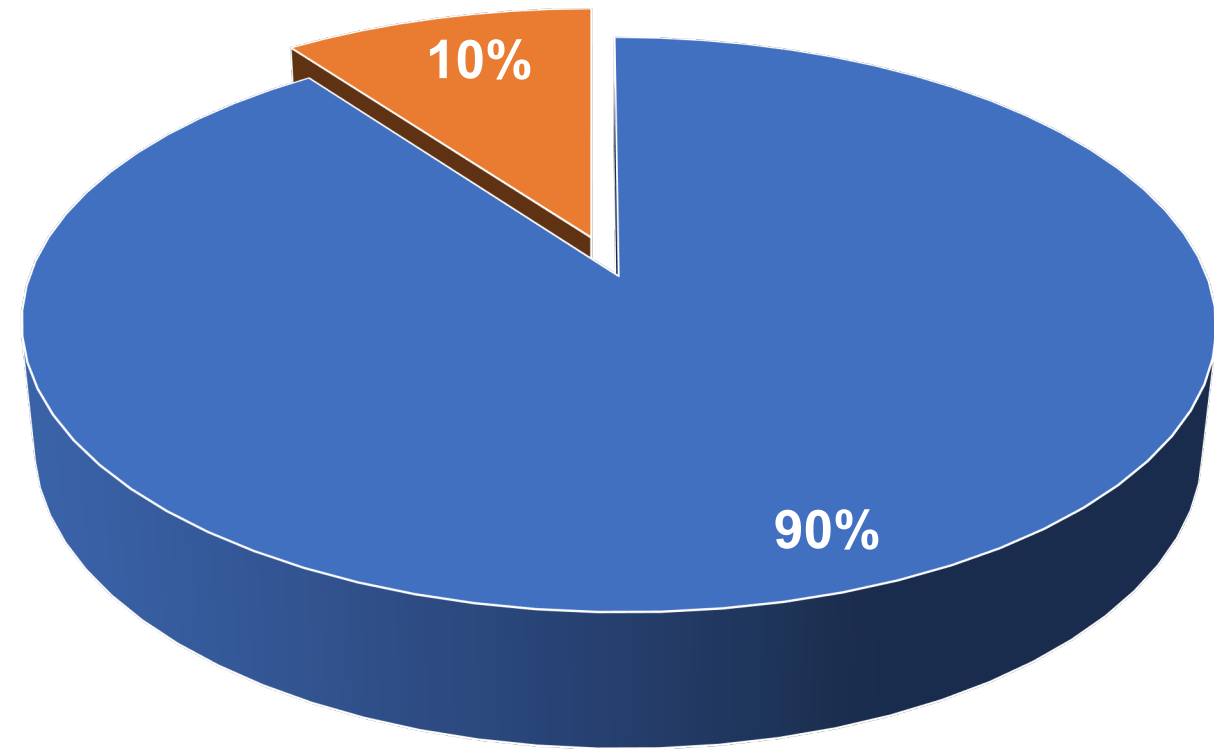
CMIT SOUTH  
ELEMENTARY  
PTO

## PTO MEMBERSHIP

Your PTO dues, PTO donations and fundraisers fund the yearly PTO budget. Without this financial support, the PTO cannot provide essential financial assistance to the school and help bridge gaps in funding from the county and the Foundation.

Dues can be paid at any time.

We will extend the Membership Drive and announce a winner in November in hopes of greater participation.



■ Enrolled Students | 563

■ Paid PTO Memberships | 63





CMIT SOUTH  
ELEMENTARY  
PTO



# JOIN A COMMITTEE

- BACK TO SCHOOL
- BLACK HISTORY MONTH
- BOOK FAIR
- COMMUNICATIONS
- PARENT PATROL
- FIELD DAY
- FUNDRAISING/DONATIONS
- K AND 5<sup>TH</sup> GRADE PROMOTION
- MCAP/SPIRIT WEEK
- MEN MAKE A DIFFERENCE DAY
- TEACHER APPRECIATION WEEK
- PTO SOCIAL AND SCHOOL EVENTS



**PGCPS**

**VOLUNTEER  
REQUIREMENTS**

- Fingerprinting must be completed at least 15 days prior to volunteering event.
- Child Protective Services Background check must be completed at least 15 days prior to volunteer activity.
- Safe Schools Training Modules must be completed each school year prior to engaging in any volunteer activity. Go to [www.pgcps.org](http://www.pgcps.org) to access this training.
- Fee is \$62.25 for fingerprinting and background check.
- Location – Appt Only: Sasscer Administrative Bldg, 14201 School Lane Room, #128, Upper Marlboro, MD 20774. Phone: 410-707-1657/  
410 -962-118 ext. 49.



CMIT SOUTH  
ELEMENTARY  
PTO

# VOLUNTEER PARENT PATROLS



ARRIVAL & DISMISSAL

## REQUIREMENTS

ARRIVAL VOLUNTEER TIMES  
7:00 AM - 8:00 AM

DISMISSAL VOLUNTEER TIMES  
2:00 PM - 3:00 PM

Must be vaccinated and show proof.

Must have background check &  
fingerprinting completed along with  
Safe Schools training as required by  
PGCPS.

# PARENT PATROLS

- We are seeking Volunteers to assist with Drop-Off and Dismissal.
- Volunteer times for Drop Off - 7:00 a.m. – 8:00 a.m.
- Volunteer times for Dismissal - 2:00 p.m. -3:00 p.m.
- Sign up:  
<https://cmitses.classroomparent.com/events/16048/volunteering>
- Volunteers must have completed PGCPS Volunteer Requirements and show proof of Safe Schools Training and background check.
- Volunteers must be vaccinated and show proof.



QUESTIONS:  
CONTACT THE PTO  
PTO@CMITSOUTHES.ORG  
or 202.810.2250



# FUNDRAISERS



CMIT SOUTH  
ELEMENTARY  
PTO

The PTO will kick off the following fundraisers this quarter:

- FOLLETT BOOK FAIR | Oct 18-22<sup>1<sup>st</sup></sup>, 2021
- HEART MONTH ASSOCIATION KICK-OFF | October 29, 2021
- LIFETOUCH PICTURES | November 8, 2021
- INDIAN RIVER FRUIT | November 1-12, 2021
- HONEY BAKED HAM | November 1-14, 2021
- DOUBLE GOOD POPCORN | November 10-14, 2021
- KRISPY KREME DIGITAL DOZENS | Ongoing through School Year





# Community Engagement



CMIT SOUTH  
ELEMENTARY  
PTO

## Grade-Level GroupMe Chat Groups

- An opportunity to connect and engage with parents within your student's grade level.
- Email name, cell number, child's name and grade to [PTO@cmitsouthes.org](mailto:PTO@cmitsouthes.org).



# UPCOMING EVENTS AND IMPORTANT DATES

## SCHOOL CLOSURES

Professional Development Day | 10.15.21

Diwali. | 11.04.21

## IMPORTANT DATES

Anti-Bullying Spirit Week | 10.18.21 – 10.22.21

Character Day/Trunk or Treat | 10.29.21

Pep Rally | 10.29.21

Daylight Savings Time Ends | 11.07.21

November PTO General Meeting | 11.10.21



CMIT SOUTH  
ELEMENTARY  
PTO



QUESTIONS???

[www.cmitsouthespto.org](http://www.cmitsouthespto.org)

# MILLER'S CORNER



CMIT SOUTH  
ELEMENTARY  
PTO

