



CMIT SOUTH
ELEMENTARY
PTO



GENERAL
MEETING

3.9.22



CMIT SOUTH
ELEMENTARY
PTO



AGENDA

- WELCOME
- WOMEN HISTORY MONTH
- TREASURER'S REPORT & FUNDRAISING GOALS
- PTO BOARD ELECTIONS | 2022-2024
- FUNDRAISERS
- UPCOMING EVENTS & IMPORTANT DATES
- PTO INFORMATION
- MILLER'S CORNER



WOMEN'S HISTORY MONTH SPOTLIGHT

WOMEN IN STEM

April J. Ericsson, Ph.D



April J. Ericsson, Ph.D. is the Deputy Instrument Manager at NASA Goddard Space Flight Center.

She holds a Master's of Engineering in Aerospace from Howard University and her Bachelor's Degree from MIT in Aeronautical/Astronautical Engineering.



WOMEN'S HISTORY MONTH SPOTLIGHT

WOMEN IN STEM

Dr. Ashanti Johnson



Dr. Ashanti Johnson, Chemist, was awarded the Presidential Award for Excellence in Science Mathematics and Engineering Mentoring by President Barack Obama in recognition for her work bridging professional development activities for underrepresented minorities.

As the Executive Director of the Institute of Broadening Participation, she has helped 159 students achieve a Ph. D. in Earth System Sciences.

Dr. Johnson has a Bachelor's degree in Marine Science and a Ph.D in Chemical Oceanography from Texas A&M University.



WOMEN'S HISTORY MONTH SPOTLIGHT

WOMEN IN STEM

Lisette Titre



Computer Animator, Lisette Titre is the Senior Character & Special Effects Artist at Electronic Arts (EA) and has contributed to some of its highest profile games such as Tiger Woods Golf for Nintendo Wii, the Simpsons, and Dante's Inferno.

She graduated Cum Laude from Miami International University with her degree in Computer Animation.



CMIT SOUTH
ELEMENTARY

P T O



TREASURER'S REPORT

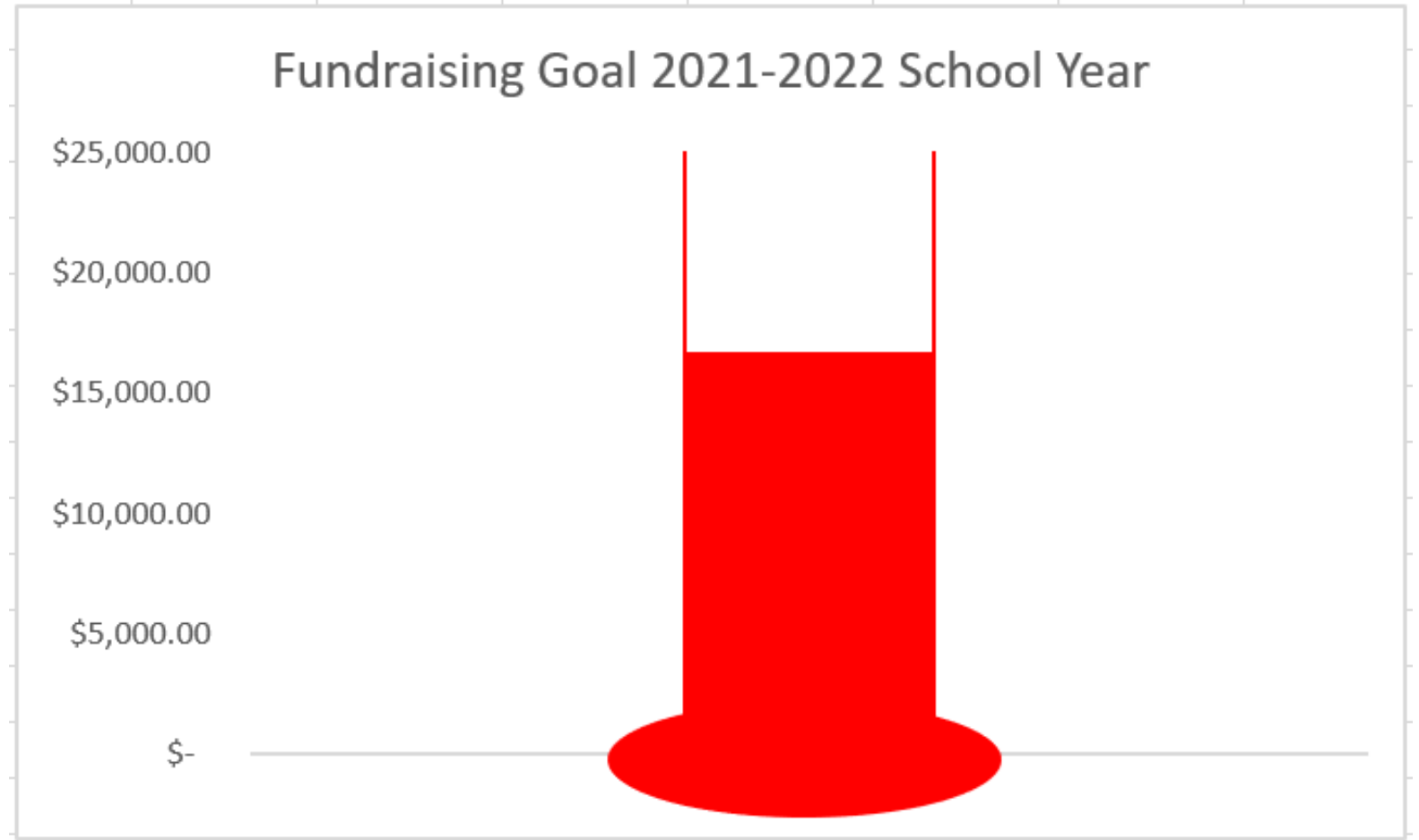
- Beginning Balance: \$25,832.97
- Total Expenditures (last 30 days): \$923.30
- Ending Balance: \$27,127.37
- Fundraising Goal - \$25,000.00
- Double Good Popcorn
 - Sold - \$8,454.00
 - Profit - \$4,227.00
- 501(C)(3) Status
 - IRS Approved as of February 10, 2022.



CMIT SOUTH
ELEMENTARY
PTO



Fundraising Goal 2021-2022 School Year



PTO BOARD ELECTIONS SY 22-24



CMIT SOUTH
ELEMENTARY
PTO

TENTATIVE BOARD ELECTIONS TIMELINE

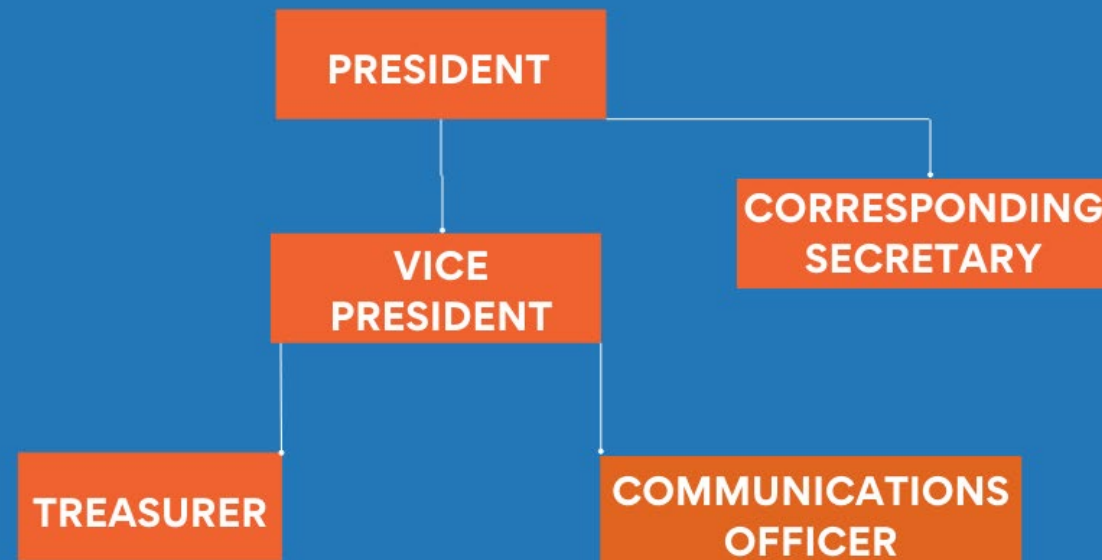
- February 2022 – The proposed new Board structure was presented to PTO Members at the February General PTO Meeting.
- March 2022 – PTO Members will vote on the proposed new Board structure and subsequent changes in Bylaws. Voting details will be sent to PTO Members in the coming weeks.
- Information on all board seats will be published for anyone wishing to run for office.
- April 2022 – Candidates will submit a 1-3 minute video to include an introduction and qualifications for the position they are interested in applying.
- May 2022 – Voting by Electronic Ballot & New Board Introductions at PTO Meeting.
- Transition Meeting – June 28, 2022

PTO BOARD ELECTIONS SY 22-24



CMIT SOUTH
ELEMENTARY
PTO

CURRENT PTO BOARD STRUCTURE



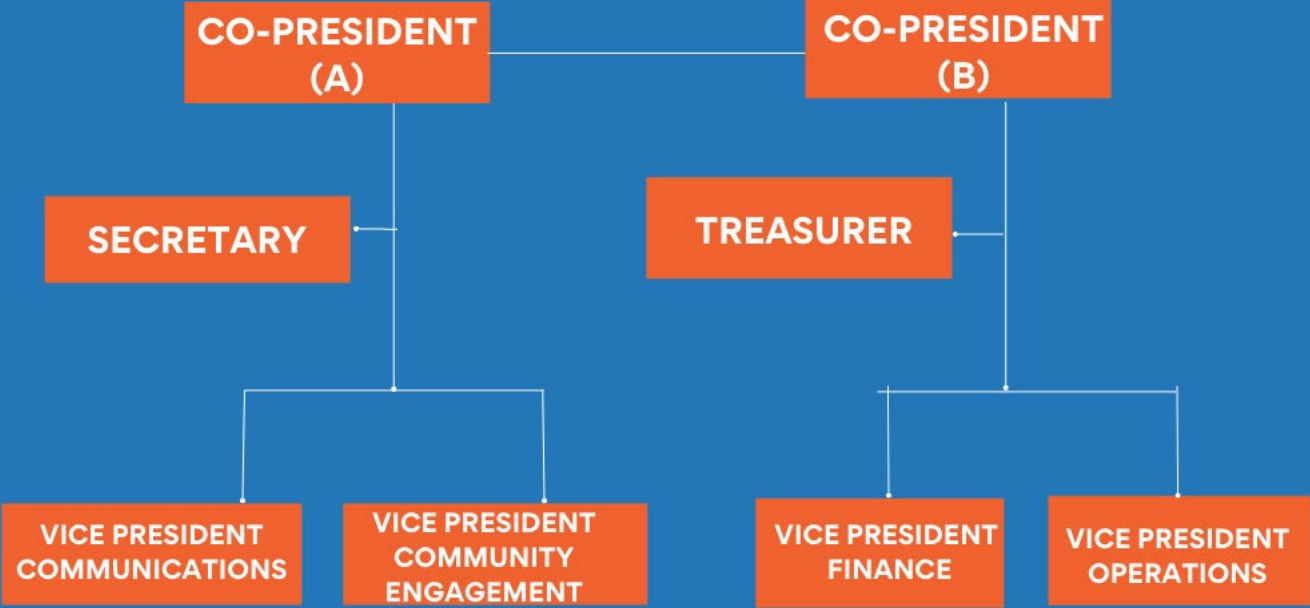
CMIT SOUTH
ELEMENTARY
PTO

PTO BOARD ELECTIONS SY 22-24



CMIT SOUTH
ELEMENTARY
PTO

PROPOSED NEW PTO BOARD STRUCTURE



CMIT SOUTH
ELEMENTARY
PTO



FUNDRAISERS



CMIT SOUTH
ELEMENTARY
PTO

”

The PTO will kick off the following fundraisers this quarter:

PTO MEMBERSHIP | Ongoing throughout the school year

Lifetouch Spring Pictures | April 21, 2022



UPCOMING EVENTS & IMPORTANT DATES

SCHOOL CLOSURES

2-hour Early Dismissal | 4.8.22

Spring Break | 4.11.22 - 4.14.22

Easter Holidays | 4.15.22 & 4.18.22

IMPORTANT DATES

Election Interest Meeting | 3.23.22

April PTO Meeting | No meeting due to Spring
Break

Teacher Appreciation Week | 5.2.22-5.6.22

May PTO Meeting | 5.11.22

PTO INFORMATION



PTO MISSION & VISION

MISSION

*Connecting
Motivating
Innovative
Technology*



VISION

*STRONGER TOGETHER THROUGH
ANY CHALLENGE.*





CMIT SOUTH
ELEMENTARY

PTO



FIVE PILLARS OF SUCCESS

1. Inspire Team Commitment and Foster Tiger Spirit, Tiger Pride and Tiger Trust.
2. Promote Connectivity and Engagement through Fundraising and Social Interaction.
3. Motivate and Integrate Teams to further the mission and vision of CMIT South ES through STEAM activities.
4. Develop Partnerships with our fellow CMIT Schools and the local Community.
5. Implement Succession Planning Structure for incoming PTO Members for SY 20-22.



CMITES PTO BOARD



CMIT SOUTH
ELEMENTARY
PTO

PTO BOARD DIRECTORY

pto@cmitsouthes.org



CMIT SOUTH
ELEMENTARY
PTO

Deniece McDowell
President

dkawills@icloud.com



Trina Aime
Vice President

trjenkins22@aol.com



Danielle Tyler
Treasurer

daniellecmpt@gmail.com



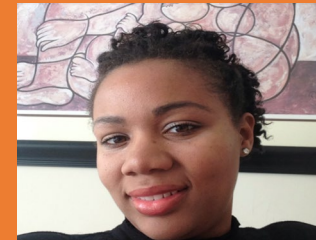
Tasya Bracey
Communications Officer

tasyacmitspto@gmail.com



Joni Turner
Corresponding Officer

joni59@gmail.com



Erika Herbert
Teacher Liaison



Amy Derfler
Teacher Liaison

CMIT ADMIN



CMIT SOUTH
ELEMENTARY
PTO



Ronald Miller, Jr., Principal



Lesma Watkis, Assistant Principal



Tauheedah Lewis, Assistant Principal





PTO MEMBERSHIP



CMIT SOUTH
ELEMENTARY
PTO

JOIN THE PTO

How do I join the PTO?

- Via the PTO website, www.cmitsouthespto.org
- Each teacher has been assigned a code and password.
- The Membership Contest ended October 8, 2021!
- The class with the highest number of registrations will receive a prize for both students and the teacher.

How much are dues?

- Families \$20.00 | Individuals - \$10.00.
- Credit card payments are accepted via the PTO website.

I would like more information....

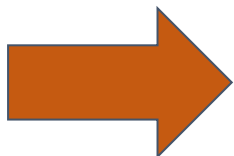
- The PTO has created a one pager that can be found on the PTO website. We hope this document will give you more insight and answer any questions.
- We are always available via any of the PTO social accounts, email or phone to answer any questions.

VISIT
cmitsouthespto.org
CLICK!
JOIN THE PTO



Enter the classroom
code & password.
ANNUAL DUES:
\$10.00 per adult or
\$20.00 for family

30 day contest
THE CLASS WITH
THE MOST
REGISTRATIONS
WINS A PRIZE!



TEACHERS AND STAFF ARE ENCOURAGED TO JOIN THE PTO



PTO MEMBERSHIP



CMIT SOUTH
ELEMENTARY
PTO

CLASS CODES

Kindergarten

<u>Teacher</u>	<u>Class Code</u>	<u>Password</u>
DERFLER	K-02	gme5xBHb
HERBERT	K-03	RW9LQq2E
MADISON	K-04	ZRj8pcf
WILLIAMS	K-01	0qvAk5Jm

First

<u>Teacher</u>	<u>Class Code</u>	<u>Password</u>
BROWN	1-11	bRWPS7qF
CURTIS	1-14	GdEZQ7cz
GREGORY	1-12	h7Pib0uH
LIBEBE	1-13	hs6wFGc5

CLASS CODES

Second

<u>Teacher</u>	<u>Class Code</u>	<u>Password</u>
BOGESS	2-24	kR9yLCzS
PHILLIPS	2-22	sB9CNuAv
ROWLAND	2-21	CyQuR8mk
VALERA	2-23	Uu8SAip2

Third

<u>Teacher</u>	<u>Class Code</u>	<u>Password</u>
BALOGUN	3-33	W1UBDRgx
FLEET	3-34	CdFNKw4k
MATHEWS	3-32	g61myc8H
MCDONAGH	3-31	c9og2YCz

CLASS CODES

Fourth

<u>Teacher</u>	<u>Class Code</u>	<u>Password</u>
CRUSOE	4-42	h75bj3Mg
HOLLOWAY	4-43	VxB9khtg
JONES	4-44	sHMPVbi7
PAVIGNANO	4-41	WU3Xc4j5

Fifth

<u>Teacher</u>	<u>Class Code</u>	<u>Password</u>
JACKSON	5-51	o2cpC1iE
MCCARGO	5-52	Po2SfbFJ
PINKARD	5-53	C7Zfw2cA



PTO MEMBERSHIP



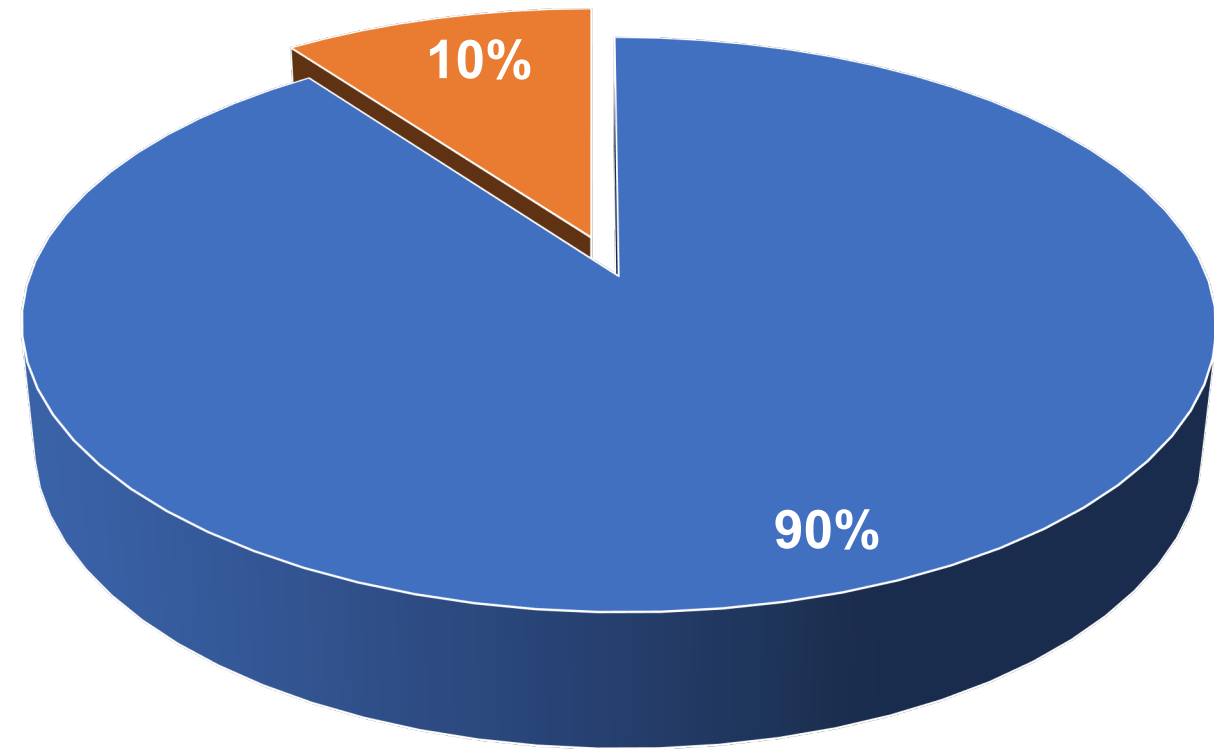
CMIT SOUTH
ELEMENTARY
PTO

PTO MEMBERSHIP

Your PTO dues, PTO donations and fundraisers fund the yearly PTO budget. Without this financial support, the PTO cannot provide essential financial assistance to the school and help bridge gaps in funding from the county and the Foundation.

Dues can be paid at any time.

We will extend the Membership Drive and announce a winner in November in hopes of greater participation.



■ Enrolled Students | 563

■ Paid PTO Memberships | 63

**COMMUNICATION
IS KEY!**

**IT IS OUR GOAL TO
SHARE INFORMATION
AND ADDRESS YOUR
CONCERNS.**

**WE WANT YOU
TO STAY INVOLVED!!**

**PTO ANNOUNCEMENTS & NEWS ARE SHARED VIA
THE PLATFORMS LISTED BELOW.**

**Follow us on Facebook and Instagram to stay
active with the PTO Community.**

**FACEBOOK | @PTOCMITSES
INSTAGRAM | @PTOCMITSES
TWITTER | @PCMITSES**

CLASS DOJO

CLASSROOM PARENT

**Announcements and news are sent via email and text.
Parents must opt in to receive messages from
Classroom Parent.**

PTO WEBSITE | www.cmitsouthespto.org

EMAIL | pto@cmitsouthes.org

PHONE | 202.810.2250





CMAIT SOUTH
ELEMENTARY
PTO



**PTO GENERAL
BODY MEETINGS
ARE HELD ON
THE 2ND
WEDNESDAY OF
EACH MONTH!**

- Meetings begin promptly at 6:00 pm and end at 7:00 pm.
- Meetings will be held virtually via Zoom and are recorded.
- Robert's Rules of Order governs our meetings.





Community Engagement



CMIT SOUTH
ELEMENTARY
PTO

Grade-Level GroupMe Chat Groups

- An opportunity to connect and engage with parents within your student's grade level.
- Email name, cell number, child's name and grade to PTO@cmitsouthes.org.



PGCPS

**VOLUNTEER
REQUIREMENTS**

- Fingerprinting must be completed at least 15 days prior to volunteering event.
- Child Protective Services Background check must be completed at least 15 days prior to volunteer activity.
- Safe Schools Training Modules must be completed each school year prior to engaging in any volunteer activity. Go to www.pgcps.org to access this training.
- Fee is \$62.25 for fingerprinting and background check.
- Location – Appt Only: Sasscer Administrative Bldg, 14201 School Lane Room, #128, Upper Marlboro, MD 20774. Phone: 410-707-1657/
410 -962-118 ext. 49.



CMIT SOUTH
ELEMENTARY
PTO



QUESTIONS???

www.cmitsouthespto.org



MILLER'S CORNER



CMIT SOUTH
ELEMENTARY
PTO