

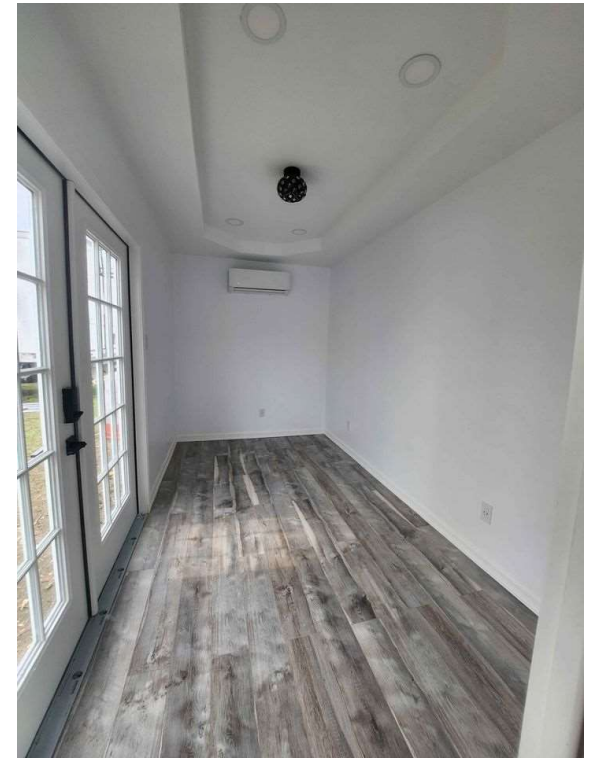
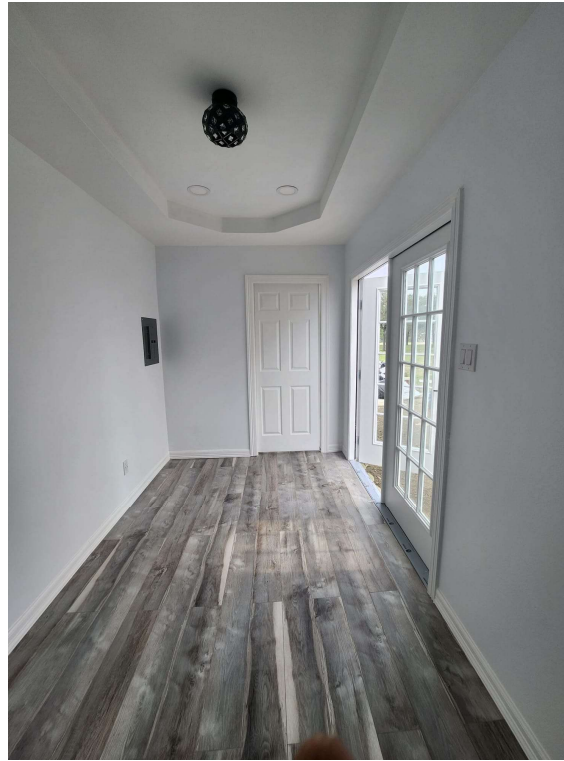


# Container Home

Mission, TX

## Unit Facts!

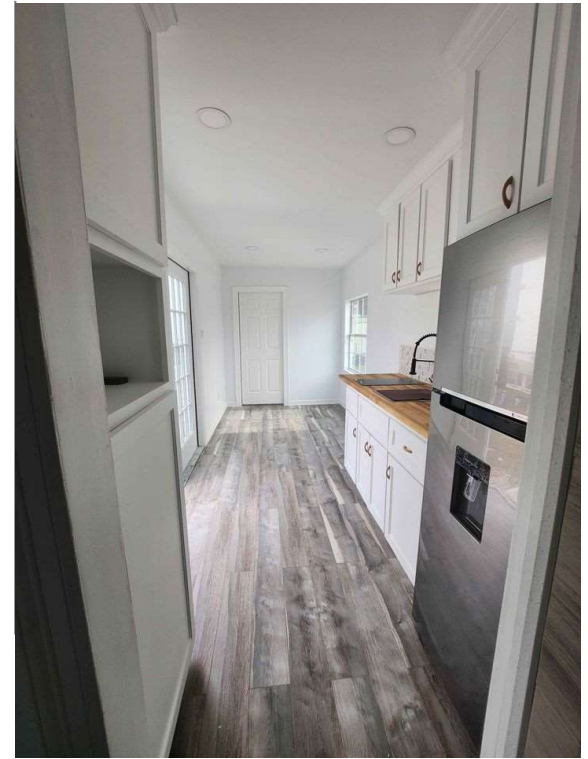
- 320 sq foot
- Live-Work Unit
- Multi-Use – Office, Gym.
- ADUs, Condos, SFs
- Double patio door
- Keyless entry
- Laminate Floor
- LED lighting
- 120v AC/Heater split
- 5-inch insulation
- > 170mph wind speed



56% of millennials and 44% of baby boomers would prefer to live in a walkable community. – NAHB. Think Mixed-use.

## Living Space + Kitchen

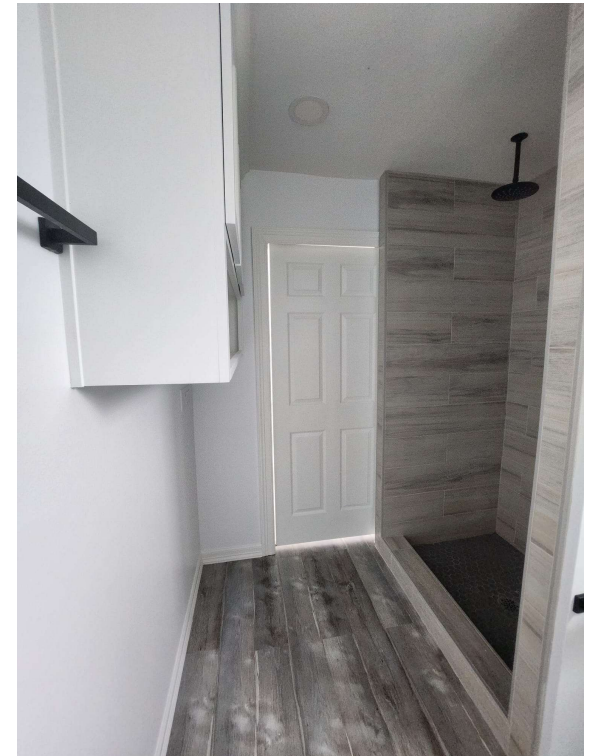
- 220v electric stove
- Butcherblock countertop
- 12cu Fridge/freezer
- Microwave compartment



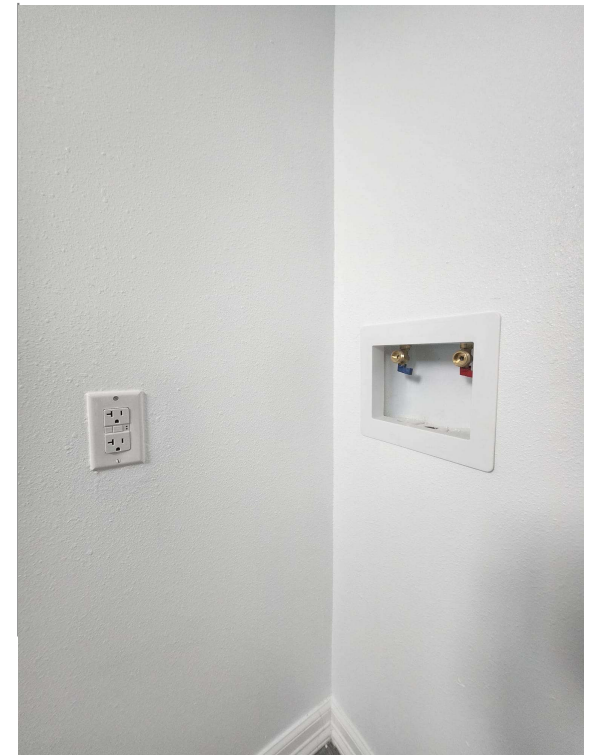
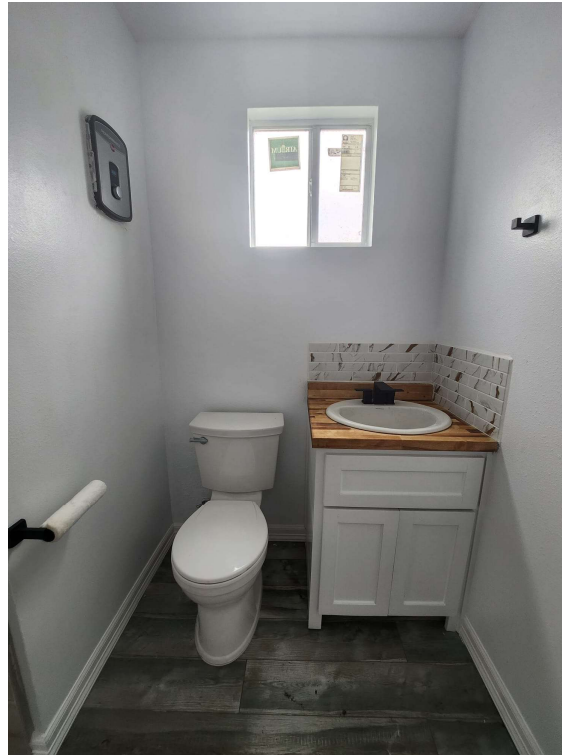
“41 percent of young adults live with their parents.” - NAHB



- Walk-in Rain shower
- 36 x 30
- Moen fittings
- 3 by 3 shelf

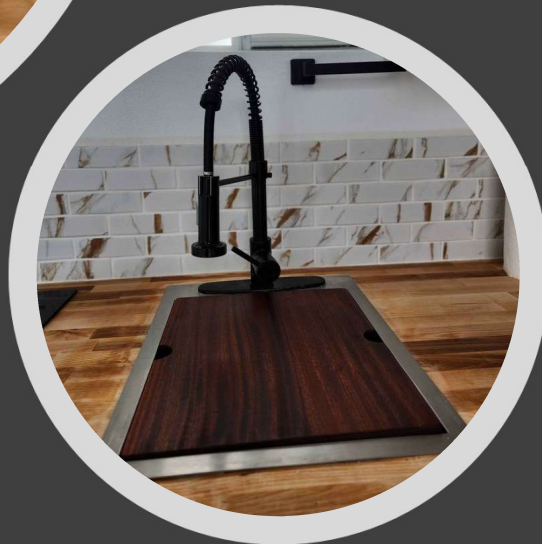
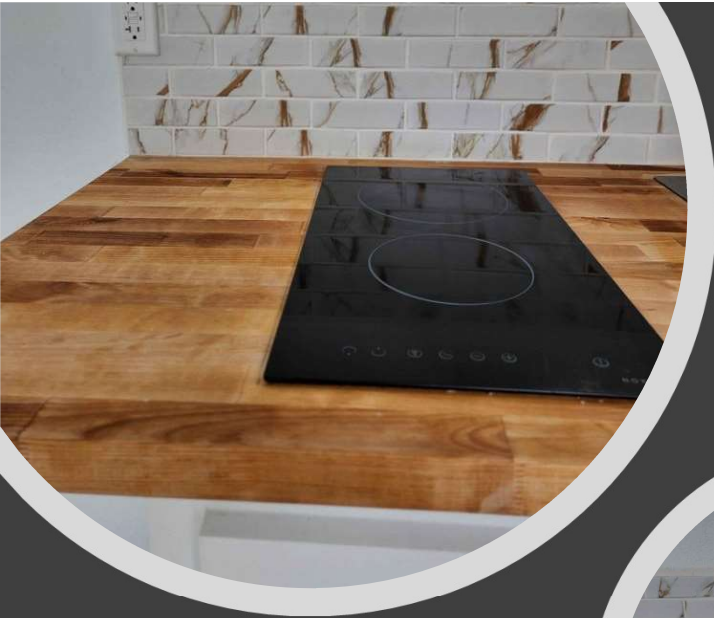


- Tankless water heater
- Washer/dryer plug in
- 2x2 bathroom window
- Air vent



# Takeaways!

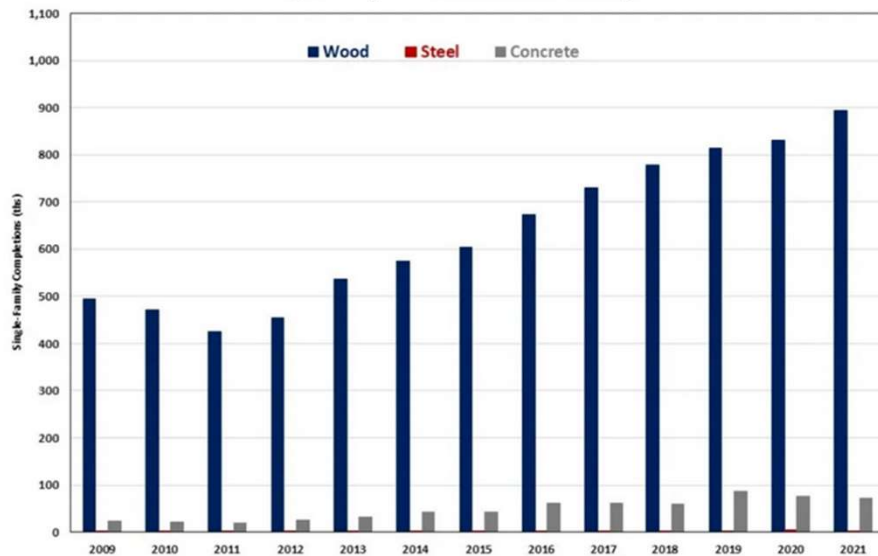
- Can be mobile or immobile
- Quick to build
- Can be personal or mortgage financed.
- Can be little taxes on wheels or on a slab and qualify as real estate for equity building.
- Classified Class B building i.e., fire retardant
- Ecofriendly and recyclable. Saves waste and 20 trees per 300 sq ft.
- Great for Adverse weather conditions which is wind, Earthquake, Tornado & Hurricanes.
- Great market stabilizer and strong trending.
- Scalable as parks, condos or housing co-op.



## ECO-FRIENDLY ECONOMIC

- 10% of deforestation is due to production of paper and wood material. 67% is used for construction of homes which averages 16 trees for every 500 sq ft. In 2021, NAHB reports 92% of framers use wood

Single-Family Home Construction Framing



Source: NAHB tabulation of data from Survey of Construction, U.S. Census Bureau

Square Foot of the Home	Type of Home	How Many Trees It Takes to Build (Estimates)
500	Single Structure	10-25 Trees
1000	Single Structure	30-50 Trees
1500	Single Structure	30-75 Trees
2000	Single Structure	60-102 Trees
2500	Single Structure	80-130 Trees
500	Apartment	10-20 Trees
1000	Apartment	20-50 Trees
1500	Apartment	80-90 Trees





# References

---

- <https://www.tdhca.state.tx.us/mh/faqs-sol.htm>
- <https://www.rockethomes.com/blog/home-buying/shipping-container-homes>
- <https://www.fairwayindependentmc.com/articles/how-to-get-a-loan-for-a-shipping-container-home>



Source: Internet: uncontained Living