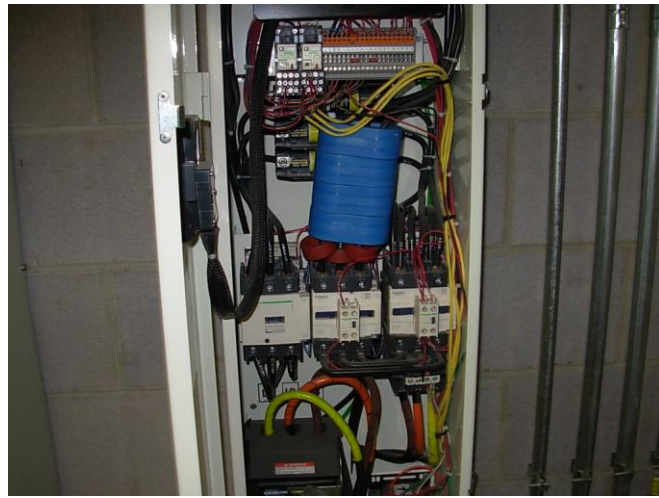
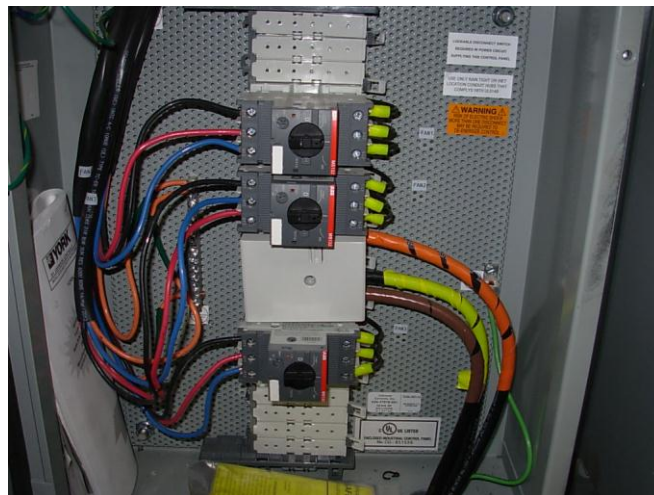


Topeka Electric Motor Repair, Inc.  
605 SW Lane St.  
Topeka, KS. 66606

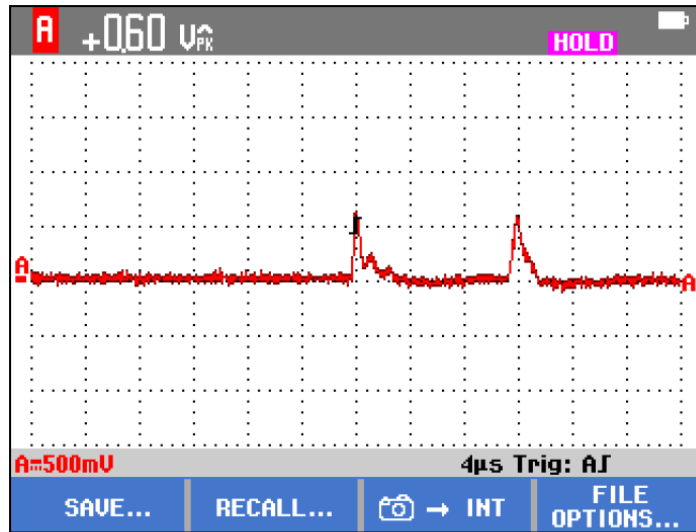
This test and install of the CoolBLUE® cores and the NaLA® cores was conducted at Shawnee Heights High School in Topeka, Kansas.



This is the VFD box after the CoolBLUE® cores and NaLA® cores were installed. This VFD controls 3 - 20hp fans motors in parallel. The Cores were installed on the top side of the contactor, the contactors on the left and the right of the center contactor are for the by-pass part of the drive. We installed four - M283 CoolBLUE® cores and three - M-381 NaLA® cores.

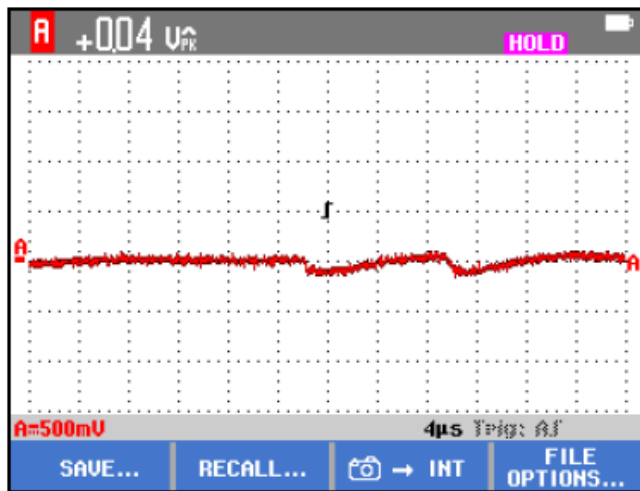


This box is the parallel connection and the overloads for the 3 motors.



with out cool blue and nala cores.  
Shawnee Heights  
3/20/15 9:24:41

This graph illustrates the Common mode currents before the CoolBLUE® cores and NaLA® cores were installed.



with cool blue and nala installed.  
Shawnee Heights  
3/20/15 9:26:36

This graph illustrates the Common mode currents after the CoolBLUE® cores and NaLA® cores were installed.

Conclusion: The readings were greatly reduced after the CoolBLUE® cores and NaLA® cores were installed.

Before installation, there was .60 volts in common mode currents. With the Rogowski coil conversion; .60 volt divided by .05 = 12.0 amps.

After the installation there was .04 volts in common mode current. With the Rogowski coil conversion; .04 divided by .05 = .8 amps.

The 6210 standard C3 ball bearing will safely carry .8 amps of common mode current.

This installation of the CoolBLUE® cores and the NaLA® cores reduced the common mode currents by over 90%.

Property of Topeka Electric Motor Repair, Inc.

3/20/15