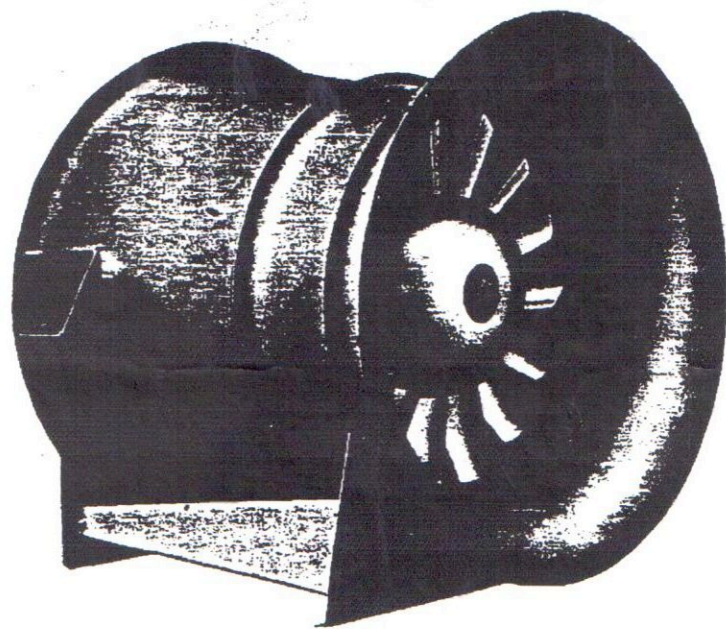


A Twist of the wrist...



...that's all it takes to **simultaneously** change all blade angles on a JOY® SPA fan

The Joy simultaneous pitch adjustment fan (SPA) provides infinite air volume quickly and inexpensively.

It's as easy as 1-2-3. Simply release the blade pitch nut-lock, change all blade angles with a turn of a single nut and reset the nut-lock. The blade pitch adjustment

can be made in a few minutes on any installation.

Also, the SPA fan is practically maintenance-free.

For information on the SPA fan, contact Joy/Green Fan Division, 338 South Broadway, New Philadelphia, Ohio 44663. (216) 339-1111, FAX (216) 339-8210.



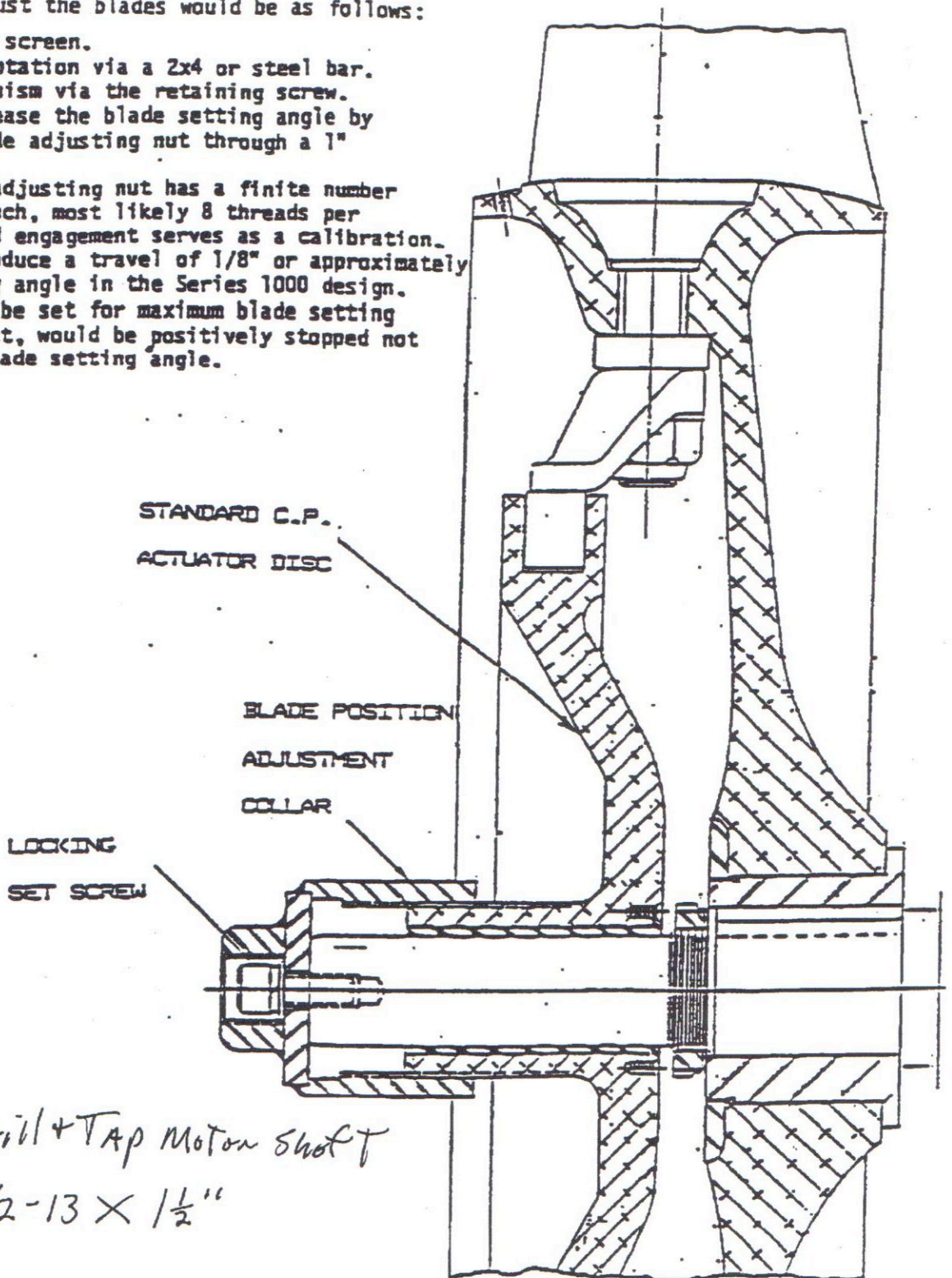
JOY TECHNOLOGIES INC.
Joy/Green Fan Division

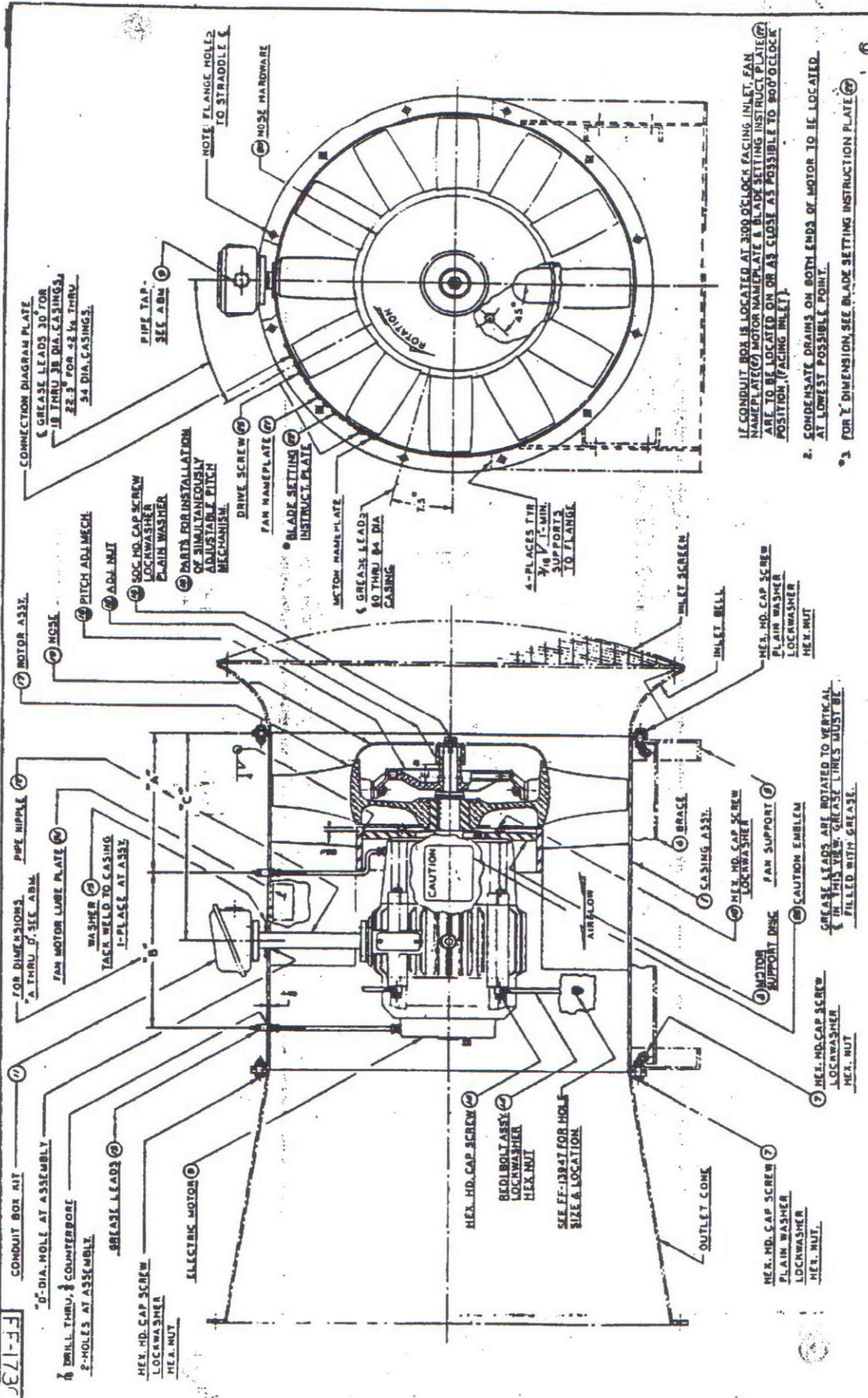
SIMULTANEOUSLY ADJUSTABLE PITCH

ROTOR SCHEMATIC

The procedure to adjust the blades would be as follows:

1. Remove the inlet screen.
2. Lock the rotor rotation via a 2x4 or steel bar.
3. Loosen the mechanism via the retaining screw.
4. Increase or decrease the blade setting angle by rotating the blade adjusting nut through a 1" hex head nut.
5. Since the blade adjusting nut has a finite number of threads per inch, most likely 8 threads per inch, this thread engagement serves as a calibration. One turn will produce a travel of 1/8" or approximately one blade setting angle in the Series 1000 design.
5. The rotors would be set for maximum blade setting angle and, in fact, would be positively stopped not to exceed this blade setting angle.





- IF CONDUIT BOX IS LOCATED AT 90° CLOCK FACING INLET, FAN NAMEPLATE (C) MOTOR NAMEPLATE & BLADE SETTING INSTRUCT. PLATE (F) ARE TO BE LOCATED ON OR AS CLOSE AS POSSIBLE TO 90° CLOCK POSITION (FACING INLET).
- CONDENSATE DRAINS ON BOTH ENDS OF MOTOR TO BE LOCATED AT LOWEST POSSIBLE POINT.
- FOR 7' DIMENSION SEE BLADE SETTING INSTRUCTION PLATE (F).

JOY MANUFACTURING CO.
FINAL ASSEMBLY-51000 52000 AXIAXANE FANS-
SIMUL. ADJ. PITCH- DIR. DRIVE- WITH ACCESSORIES

FF-17309

SEPARATE TO	✓	✓	✓	✓
ALPHA	✓	✓	✓	✓
HOWER	✓	✓	✓	✓
RYLING WORK	✓	✓	✓	✓
MARELLI	✓	✓	✓	✓
ENERGY INT.	✓	✓	✓	✓