

Pressure filters offer excellent, "last line of defense protection", preventing solids from clogging distribution orifices. Filtration available ranges from 1/8" (.125) down to 1/250" (.004"). We recommend our 600 micron (.024") filter sock.

Free shipping on 24 or more pressure filters within the continental US 48

Distributor PRICE LIST -

Effective February 22nd, 2021

Pressure Filters



All Pricing is per item, not per case

2" Job Ready

2" Field Assemble

4" pressure filter

Pressure Filters for pressurized distribution systems such as mounds and sand filters

		#/Cs	Dist.	Whole.	Retail
STF-100	pressure filter job ready 2", stainless steel screen, 1/16" holes	2	\$232.00	\$310.00	\$426.00
STF-100A2	pressure filter field assemble 2", stainless steel screen, 1/16" holes	2	\$195.00	\$260.00	\$359.00
STF-100A2/U	pressure filter 2", with attached union, but without tailpiece, stainless steel screen, 1/16" holes	2	\$215.00	\$287.00	\$394.00
STF-100A2-1/8	pressure filter field assemble 2", stainless steel screen, 1/8" holes	2	\$219.00	\$292.00	\$399.00
STF-100A3	pressure filter custom model 3", stainless steel screen, 1/16" holes	2	\$230.00	\$307.00	\$409.00
STF-100A3-1/8	pressure filter custom model 3", stainless steel screen, 1/8" screen	2	\$262.00	\$349.00	\$465.00
STF-100A4	pressure filter custom model 4", stainless steel screen, 1/16" holes	1	\$425.00	\$567.00	\$759.00
STF-100P/100	pressure filter job ready 2", plastic screen, with 100 micron sock (2 extra socks included)	2	\$242.00	\$322.00	\$429.00
STF-100P/150190	pressure filter job ready 2", plastic screen, with 150-190 micron sock (6 extra socks included)	2	\$232.00	\$309.00	\$412.00
STF-100P/600	pressure filter job ready 2", plastic screen, with 600 micron sock (6 extra socks included)	2	\$222.00	\$296.00	\$395.00
STF-100P2/100	pressure filter field assemble 2", plastic screen, with 100 micron sock (2 extra socks included)	2	\$205.00	\$273.00	\$364.00
STF-100P2/150190	pressure filter field assemble 2", plastic screen, with 150-190 micron sock (6 extra socks included)	2	\$195.00	\$260.00	\$347.00
STF-100P2/600	pressure filter field assemble 2", plastic screen, with 600 micron sock (6 extra socks included)	2	\$185.00	\$247.00	\$329.00
STF-100P3/100	pressure filter field assemble 3", plastic screen, with 100 micron sock (2 extra socks included)	2	\$240.00	\$320.00	\$427.00
STF-100P3/150190	pressure filter field assemble 3", plastic screen, with 150-190 micron sock (6 extra socks included)	2	\$230.00	\$307.00	\$409.00
STF-100P3/600	pressure filter field assemble 3", plastic screen, with 600 micron sock (6 extra socks included)	2	\$220.00	\$293.00	\$391.00
STF-100P4/100	pressure filter field assemble 4", plastic screen, with 100 micron sock (2 extra socks included)	1	\$440.00	\$586.00	\$782.00
STF-100P4/150190	pressure filter field assemble 4", plastic screen, with 150-190 micron sock (6 extra socks included)	1	\$425.00	\$567.00	\$756.00
STF-100P4/600	pressure filter field assemble 4", plastic screen, with 600 micron sock (6 extra socks included)	1	\$410.00	\$547.00	\$729.00

Pressure Filter Socks for finer filtration (required if using our plastic screen version)

		Dist.	Whole.	Retail
STF-104-600M-single	filter sock polyester knit 600 micron (individually packaged)	\$2.80	\$3.90	\$5.20
STF-104-600M-bulk	filter sock polyester knit 600 micron (bulk packaged 12 or more)	\$1.40	\$1.95	\$2.60
STF-104-150190M-single	filter sock polyester knit 150-190 micron (individually packaged)	\$4.50	\$6.00	\$8.00
STF-104-150190M-bulk	filter sock polyester knit 150-190 micron (bulk packaged 12 or more)	\$2.25	\$3.00	\$4.00
STF-104TN-single	thermal nylon sock 100 micron (individually packaged with o-ring)	\$13.00	\$18.00	\$24.00
STF-104TN-bulk	thermal nylon sock 100 micron (bulk packaged 6 or more without o-rings)	\$10.00	\$14.00	\$19.00
STF-104-A4-600M-single	filter sock polyester knit 600 micron for 4" pressure filters (individually packaged)	\$5.60	\$7.80	\$10.40
STF-104-A4-600M-bulk	filter sock polyester knit 600 micron for 4" pressure filters (bulk packaged 12 or more)	\$2.80	\$3.90	\$5.20
STF-104TN-A4-single	thermal nylon sock 100 micron for 4" pressure filters (individually packaged with o-ring)	\$26.00	\$36.00	\$48.00
STF-104TN-A4-bulk	thermal nylon sock 100 micron for 4" pressure filters (bulk packaged 6 or more without o-rings)	\$20.00	\$28.00	\$38.00



STF-107



**STF-108
STF-108A**



STF-105



STF-150

Pressure Filter Parts & Accessories

		Dist.	Whole.	Retail
STF-102	stainless steel filter screen	\$70.00	\$93.50	\$125.00
STF-102P	extra filter screen, plastic, no sock	\$50.00	\$67.00	\$89.00
STF-105	optional wire cage for pressure filter to prevent large debris backflush into pump	\$20.00	\$26.00	\$35.00
STF-107	alert with latching light for use with STF-101 pressure alarm switch	\$160.00	\$213.00	\$284.00
STF-108	2" schedule 80 PVC union	\$10.90	\$14.50	\$19.40
STF-150	optional lid/screen removal wrench for use with pressure filter (made of PVC)	\$22.00	\$29.00	\$39.00
STF-150M	optional lid/screen removal wrench for use with pressure filter (made of metal)	\$53.00	\$70.00	\$94.00
STF-FC	replacement pressure filter cover	\$12.00	\$16.00	\$21.00
STF-GASKET	replacement polyethylene gasket for pressure filter cap	\$1.25	\$2.00	\$2.75

Gravity Flow Bristle Filters



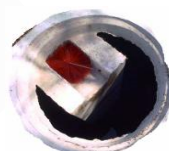
STF-110



STF-110/6W



STF-110/7R



STF-110/8B



Maintenance Sleeves

Gravity Flow Effluent Filters and Accessories		Free shipping on 18 cases or more of bristle filters		#/Cs	Dist.	Whole.	Retail
STF-110	septic tank bristle filter 4" yellow (gravity flow effluent filter)			12	\$12.50	\$16.50	\$22.00
STF-110-6W	septic tank bristle filter 6" white (gravity flow effluent filter)			4	\$30.00	\$40.00	\$53.00
STF-110-7R	septic tank bristle filter 7" red (gravity flow effluent filter)			4	\$32.00	\$42.00	\$56.00
STF-110-8B	septic tank bristle filter 8" blue (gravity flow effluent filter)			2	\$38.00	\$50.00	\$67.00
STF-130	maintenance sleeve, use with STF-110 to block flow in tee during service				\$14.00	\$19.00	\$25.00
STF-130-R	maintenance sleeve, use with STF-110-6 to block flow in tee during service				\$20.00	\$27.00	\$36.00

Pleated Gravity Filter

Pleated filtration has been commonly used in vacuum cleaners, oil filters and many other applications for decades. Now Sim/Tech Filter has adapted that proven technology to the wastewater industry. This particular product is designed for longevity in residential systems as well as the demands of commercial systems and other high volume and/or high solids applications. 3/32" filtration

- ◆ **Over 900 square inches of open area, more than double the filtration of other popular large filters**
- ◆ **External filtration reduces internal debris accumulation**
- ◆ **Will accept any 4" filter designed for standard 4" baffles if finer progressive filtration is desired.**
- ◆ **Flow channels in the material increase longevity**
- ◆ **Unique quick disconnect for easy removal and cleaning.**



Pleated Gravity Filter		#/Cs	Dist.	Whole.	Retail
STF-4PGF	Pleated gravity filter with quick disconnect		\$135.00	\$180.00	\$240.00
STF-4P	Pleated filter cartridge only (to fit 4" pipe)		\$75.00	\$100.00	\$133.00

Pleated STEP Filter

The same pleated cartridge as the above gravity filter, but used as a filter for turbine pumps. This design allows the filter to be serviced without pulling the pump. The picture shows a cutaway image of the pump inside of the 6" pipe on the left. The filter cartridge slides of the 4" pipe on the right. Multiple configurations to adapt to almost any situation. The standard unit is 54" tall. Can be shipped without pipes to save on shipping and storage costs. Customs configurations are available.

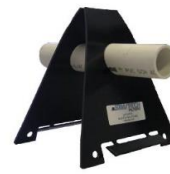
- ◆ **Over 900 square inches of open area per filter cartridge**
- ◆ **Different configurations can adapt to almost any situation**
- ◆ **3/32" filtration**
- ◆ **External filtration reduces internal debris accumulation**
- ◆ **Flow channels in the material increase longevity**



Pleated STEP Filter		#/Cs	Dist.	Whole.	Retail
STF-1STEP24X1-SDR35	Pleated STEP filter, 24" tall filter cartridge, 1 filter leg, without pipes, with 4" SDR35 intake fitting		\$185.00	\$245.00	\$325.00
STF-1STEP24X1-SP	Pleated STEP filter, 24" tall filter cartridge, 1 filter leg, without pipes, with 4" sewer pipe intake fitting		\$185.00	\$245.00	\$325.00
STF-1STEP24X1-WP	Pleated STEP filter, 24" tall filter cartridge, 1 filter leg, with 4" and 6" sewer pipes included		\$210.00	\$280.00	\$370.00
STF-1STEP48X1-SDR35	Pleated STEP filter, two 24" tall filter cartridges, 1 filter leg, without pipes, with 4" SDR35 intake fitting		\$270.00	\$355.00	\$470.00
STF-1STEP48X1-SP	Pleated STEP filter, two 24" tall filter cartridges, 1 filter leg, without pipes, with 4" sewer pipe intake fitting		\$270.00	\$355.00	\$470.00
STF-1STEP48X1-WP	Pleated STEP filter, two 24" tall filter cartridges, 1 filter leg, with 4" and 6" sewer pipes included		\$295.00	\$390.00	\$515.00
STF-2STEP24X1-SDR35	Pleated STEP filter for dual pumps, 24" cartridge, 1 leg, wo/pipes, with 4" SDR35 intake fitting		\$235.00	\$310.00	\$405.00
STF-2STEP24X1-SP	Pleated STEP filter for dual pumps, 24" tall filter cartridge, 1 leg, wo/pipes, with 4" sewer pipe intake fitting		\$235.00	\$310.00	\$405.00
STF-2STEP24X1-WP	Pleated STEP filter for dual pumps, 24" tall filter cartridge, 1 leg, with 4" and 6" sewer pipes included		\$270.00	\$355.00	\$460.00
STF-2STEP48X1-SDR35	Pleated STEP filter for dual pumps, 48" cartridge, 1 leg, wo/pipes, with 4" SDR35 intake fitting		\$330.00	\$440.00	\$560.00
STF-2STEP48X1-SP	Pleated STEP filter for dual pumps, 48" tall filter cartridge, 1 leg, wo/pipes, with 4" sewer pipe intake fitting		\$330.00	\$440.00	\$560.00
STF-2STEP48X1-WP	Pleated STEP filter for dual pumps, 48" tall filter cartridge, 1 leg, with 4" and 6" sewer pipes included		\$365.00	\$474.00	\$620.00
STF-STEP24	6" diameter cartridge holder for the 24" STEP filter		\$40.00	\$53.00	\$70.00
STF-STEP48	6" diameter cartridge holder for the 48" STEP filter		\$50.00	\$66.00	\$88.00
STF-6P	Pleated filter cartridge only (to fit 6" pipe)		\$85.00	\$110.00	\$143.00

Bowtie Pipe Stands

Save time, money and hassle by using the Bowtie pipe stand in your chamber systems or even your media drain field. No Straps to deal with, independent of chamber. Easy shipping and storage. Pipes remain level for accurate distribution and drainage. Squirt test can be done with pipe in place before chambers are added.



STF-BTPS for pressurized chambers systems

Bowtie Pipe Stands

			<i>Dist.</i>	<i>Whole.</i>	<i>Retail</i>
STF-BTPS-1.00	Bowtie Pipe Stand To Fit 1" PVC pipe, (holds up pipe in pressurized chamber systems)	50	\$1.99	\$2.99	\$3.99
STF-BTPS-1.25	Bowtie Pipe Stand To Fit 1.25" PVC pipe, (holds up pipe in pressurized chamber systems)	50	\$1.99	\$2.99	\$3.99
STF-BTPS-1.50	Bowtie Pipe Stand To Fit 1.50" PVC pipe, (holds up pipe in pressurized chamber systems)	50	\$1.99	\$2.99	\$3.99
STF-BTPS-2.00	Bowtie Pipe Stand To Fit 2" PVC pipe, (holds up pipe in pressurized chamber systems)	50	\$1.99	\$2.99	\$3.99
STF-BTPS-3.00	Bowtie Pipe Stand To Fit 3" PVC pipe, (holds up pipe in pressurized chamber systems)		\$6.99	\$9.50	\$12.75

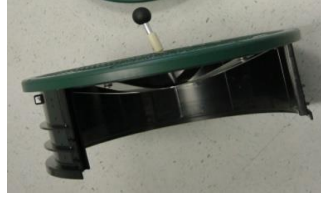
Risers & Covers



STF-R824B



24" covers



24" Locking Covers



STF-PRT



STF-AR24



STF-PA36G

Risers, Covers & Adapter Rings

		<i>#/Cs</i>	<i>Dist.</i>	<i>Whole.</i>	<i>Retail</i>
STF-R824B	8" tall by 24" diameter segmented riser, black	4	\$36.00	\$45.00	\$60.00
STF-CI24B	24" cast iron cover, black (fits most 24" diameter risers)		\$148.00	\$175.00	\$233.00
STF-CI24G	24" cast iron cover, green (fits most 24" diameter risers)		\$148.00	\$175.00	\$233.00
STF-APC24G	24" polycarbonate/abs cover, green (fits most 24" diameter risers)	3	\$60.00	\$69.00	\$92.00
STF-APC24B	24" polycarbonate/abs cover, black (fits most 24" diameter risers)	3	\$60.00	\$69.00	\$92.00
STF-APC24GI-1.50	24" polycarbonate/abs cover with 1.5" encapsulated insulation, green (fits most 24" diameter risers)	3	\$85.00	\$100.00	\$125.00
STF-APC24BI-1.50	24" polycarbonate/abs cover with 1.5" encapsulated insulation, black (fits most 24" diameter risers)	3	\$85.00	\$100.00	\$125.00
STF-APC24GI-2.00	24" polycarbonate/abs cover with 2" insulation, green (fits most 24" diameter risers)	2	\$72.00	\$84.00	\$112.00
STF-APC24BI-2.00	24" polycarbonate/abs cover with 2" insulation, black (fits most 24" diameter risers)	2	\$72.00	\$84.00	\$112.00
STF-LPC24B-UR	24" polycarbonate/abs cover with ABS locking feature, black (for ultra-rib pipe riser)	2	\$108.00	\$133.00	\$177.00
STF-LPC24G-UR	24" polycarbonate/abs cover with ABS locking feature, green (for ultra-rib pipe riser)	2	\$108.00	\$133.00	\$177.00
STF-LPC24B-SR	24" polycarbonate/abs cover with ABS locking feature, black (for Sim/Tech riser)	2	\$98.00	\$123.00	\$130.00
STF-LPC24G-SR	24" polycarbonate/abs cover with ABS locking feature, green (for Sim/Tech riser)	2	\$98.00	\$123.00	\$130.00
STF-LPC24B-DWC	24" polycarbonate/abs cover with SS locking feature, black (for double wall corrugated pipe riser)	2	\$125.00	\$148.00	\$197.00
STF-LPC24G-DWC	24" polycarbonate/abs cover with SS locking feature, green (for double wall corrugated pipe riser)	2	\$125.00	\$148.00	\$197.00
STF-LCPLUG	replacement plug for locking cover center hole		\$0.35	\$0.47	\$0.63
STF-PA36G	polycarbonate/aluminum cover - 36", color green		\$350.00	\$467.00	\$623.00
STF-PRT	Push release tool for locking covers		\$29.00	\$38.00	\$50.00
STF-AR24	thermoplastic adapter ring with square flange to retrofit cement tanks with 24" diameter Simtech risers	12	\$23.00	\$29.00	\$46.00
STF-AR24R	thermoplastic adapter ring with round flange for making 24" double wall corrugated riser pipe even		\$23.00	\$29.00	\$46.00



Security Nets



STF-QLINK



STF-N24 with 4 total quick links



STF-URC24



Ultra-Rib Pipe Cut-off Saws



Riser & Riser Pipe Accessories

		<i>#/Cs</i>	<i>Dist.</i>	<i>Whole.</i>	<i>Retail</i>
STF-N18	security net with mounting hardware fits 12" to 18" diameter risers (2 quick links included)		\$22.00	\$29.00	\$39.00
STF-N24	security net with mounting hardware fits 18" to 24" diameter risers (2 quick links included)		\$30.00	\$39.00	\$52.00
STF-N30	security net with mounting hardware fits 24" to 30" diameter risers (2 quick links included)		\$36.00	\$47.00	\$63.00
STF-N36	security net with mounting hardware fits 30" to 36" diameter risers (2 quick links included)		\$48.00	\$63.00	\$84.00
STF-QLINK	optional extra quick links for security net (please specify per net when ordering security nets)		\$2.50	\$3.40	\$4.60
STF-URC24	connector ring for connecting two 24" ultra rib pipe risers together		\$24.00	\$32.00	\$43.00
STF-URCO-SAW-ipex	ultra-rib cut off saw for 24" IPEX pipe		\$210.00	\$260.00	\$310.00
STF-URCO-BLADE	replacement blade for ultra-rib cutoff saw		\$17.00	\$22.00	\$30.00

Orifice Shields, Sweeps & Float Trees

Orifice shields prevent restriction or blockage of orifices by eliminating contact between the orifices and drain media



STF-106D
Diffuser Shield



STF-106TDS
Top Discharge Shield

Long radius clean-out sweeps and valve boxes allow easy access for periodic flushing of biological slime



STF-111



STF-112

Orifice Shields for Pressurized Distribution Laterals		Free shipping on 1000 or more orifice shields	#/Cs	Dist.	Whole.	Retail
STF-106D-0.75	diffuser shield fits 3/4" pipe, 4-slot (for orifices facing down)		100	\$1.48	\$2.04	\$2.80
STF-106D-1.00	diffuser shield fits 1" pipe, 4-slot (for orifices facing down)		100	\$1.48	\$2.04	\$2.80
STF-106D-1.25-1.50	diffuser shield fits 1-1/4" & 1-1/2" pipe, 4-slot (for orifices facing down)		100	\$1.48	\$2.04	\$2.80
STF-106D-2.00	diffuser shield fits 2" pipe, 4-slot (for orifices facing down)		100	\$1.88	\$2.54	\$3.40
STF-106D-3.00	diffuser shield fits 3" pipe, 4-slot (for orifices facing down)			\$7.00	\$9.40	\$12.60
STF-106TDS-0.75	top discharge shield fits 3/4" pipe, 4-slot (for orifices facing up)		100	\$1.48	\$2.04	\$2.80
STF-106TDS-1.00	top discharge shield fits 1" pipe 4-slot (for orifices facing up)		100	\$1.48	\$2.04	\$2.80
STF-106TDS-1.25-1.50	top discharge shield fits 1-1/4" & 1-1/2" pipe 4-slot (for orifices facing up)		100	\$1.48	\$2.04	\$2.80
STF-106TDS-2.00	top discharge shield fits 2" pipe 4-slot (for orifices facing up)		100	\$1.88	\$2.54	\$3.40
STF-106TDS-3.00	top discharge shield fits 3" pipe 4-slot (for orifices facing up)			\$7.00	\$9.40	\$12.60

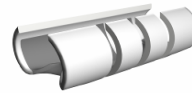
Clean-Out Sweeps & Valve Boxes

STF-111L-0.75	long radius clean-out sweep 3/4" (white schedule 40 PVC)	50	\$1.95	\$2.90	\$3.85
STF-111L-1.00	long radius clean-out sweep 1" (white schedule 40 PVC)	50	\$2.55	\$3.75	\$5.00
STF-111L-1.25	long radius clean-out sweep 1-1/4" (white schedule 40 PVC)	30 or 60	\$3.40	\$5.00	\$6.65
STF-111L-1.50	long radius clean-out sweep 1-1/2" (white schedule 40 PVC)	20 or 50	\$4.35	\$6.40	\$8.55
STF-111L-2.00	long radius clean-out sweep 2" (white schedule 40 PVC)	30	\$5.70	\$8.60	\$11.50
STF-112	valve box, 7" round for use with sweeps *marked sewer*	20	\$6.00	\$7.45	\$9.95
STF-113	valve box, 10" round *marked sewer*	7	\$14.50	\$18.10	\$24.00

Float tree items allow floats to be mounted separate from the system piping. Floats can be easily adjusted without entering the pump chamber. J-Hooks are for organising extra wire, cable and ropes.



STF-FTB



STF-FHPB



STF-FHHW



STF-JHOOK

Float Tree	Free Shipping on any combo 1000+ orifice shields, float tree brackets or holders	#/Cs	Dist.	Whole.	Retail
STF-106FTB-0.50	float tree bracket fits 1/2" tree	50	\$2.75	\$3.95	\$5.30
STF-106FTB-1.00	float tree bracket fits 1" tree	50	\$2.75	\$3.95	\$5.30
STF-106FTB-1.25-1.50	float tree bracket fits 1-1/4" & 1-1/2" tree	50	\$2.75	\$3.95	\$5.30
STF-106FTB-2.00	float tree bracket fits 2" tree	50	\$3.25	\$4.85	\$6.50
STF-FHHW-1.0	float holder hard wire fits 1" pipe	50	\$2.95	\$4.20	\$5.65
STF-FHHW-1.25-1.50	float holder hard wire fits 1-1/4" and 1-1/2" pipe	50	\$2.95	\$4.20	\$5.65
STF-FHHW-2.00	float holder hard wire back fits 2" pipe	50	\$3.50	\$4.75	\$6.35
STF-FHPB-1.0	float holder piggy back fits 1" pipe	50	\$3.25	\$4.50	\$6.00
STF-FHPB-1.25-1.50	float holder piggy back fits 1-1/4" and 1-1/2" pipe	50	\$3.25	\$4.50	\$6.00
STF-FHPB-2.00	float holder piggy back fits 2" pipe	50	\$3.85	\$5.20	\$6.50
STF-JHOOK	"J" hook to organize excess wire		\$0.60	\$0.80	\$1.10



Camlock couplings made of PVC with stainless steel handles, rings and pins. For use with PVC pipe as a quick disconnect.

Camlock Couplings	STF-CAMX200	STF-CAMY200	Dist.	Whole.	Retail
STF-CAMX050	1/2" Camlock coupling, male piece		\$2.35	\$3.15	\$4.20
STF-CAMY050	1/2" Camlock coupling, female piece		\$5.70	\$7.60	\$10.15
STF-CAMX075	3/4" Camlock coupling, male piece		\$2.35	\$3.15	\$4.20
STF-CAMY075	3/4" Camlock coupling, female piece		\$5.70	\$7.60	\$10.15
STF-CAMX100	1" Camlock coupling, male piece		\$2.50	\$3.35	\$4.50
STF-CAMY100	1" Camlock coupling, female piece		\$6.45	\$8.60	\$11.50
STF-CAMX125	1-1/4" Camlock coupling, male piece		\$2.75	\$3.70	\$4.95
STF-CAMY125	1-1/4" Camlock coupling, female piece		\$7.00	\$9.35	\$12.50
STF-CAMX150	1-1/2" Camlock coupling, male piece		\$2.85	\$3.80	\$5.10
STF-CAMY150	1-1/2" Camlock coupling, female piece		\$7.60	\$10.15	\$13.55
STF-CAMX200	2" Camlock coupling, male piece		\$3.55	\$4.75	\$6.35
STF-CAMY200	2" Camlock coupling, female piece		\$9.35	\$12.50	\$16.70
STF-CAMX300	3" Camlock coupling, male piece		\$8.70	\$11.60	\$15.50
STF-CAMY300	3" Camlock coupling, female piece		\$16.00	\$21.35	\$28.50



The Float Check

Sim/Tech Filter's Float Check is a tool designed to make checking floats quick, easy and safe.



Float Checks

		<i>Dist.</i>	<i>Whole.</i>	<i>Retail</i>
STF-FLCHK	Float Check Tool for use in servicing pump floats (short handle version)	\$14.00	\$21.00	\$28.00
STF-FLCHK-H	Float Check Tool for use in servicing pump floats (long folding handle version with hook)	\$18.00	\$26.00	\$32.00

The TruCore Sludge Sampler

Sim/Tech Filter introduces the TruCore for core sampling of wastewater and other fluids. The design of the unit allows samples to be taken without creating the excessive turbulence often associated with standard samplers. Because there are no restrictions caused by valves, stoppers, flaps, etc., fluid is allowed to flow freely and virtually undisturbed into the sampling tube creating a true core sample of the contents of the tank. It also has a huge sampling capacity compared to other sludge core samplers on the market. With an inside diameter of 1-3/8" the capacity per foot is almost 10 ounces. Use the Sim/Tech Filter TruCore for more accurate and easier sampling.

Visit our website to see a video demonstration

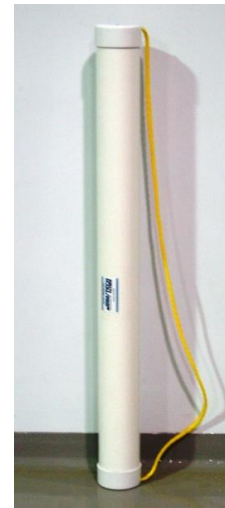
- Accurate sampling, virtually without turbulence
- Samples can be taken quickly
- Inside diameter of 1-3/8" has a huge sampling capacity of almost 10 ounces per foot
- Easy to collect sample and easy to release sample
- Takes good samples, even in thicker sludge
- Simple straight-thru tube design makes it extremely easy to clean
- Marked every foot
- Replaceable gasket
- Can be extended

Custom samplers also available

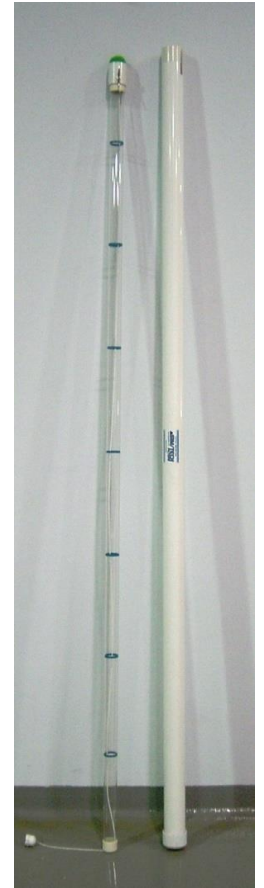
Extension Kit



Case for two piece unit



One piece unit & case



TrueCore Sludge Sampler

		<i>Dist.</i>	<i>Whole.</i>	<i>Retail</i>
STF-SLUDGE2	2 foot TruCore sludge sampler with case	\$45.00	\$60.00	\$80.00
STF-SLUDGE2-NC	2 foot TruCore sludge sampler (case not included)	\$34.00	\$45.00	\$60.00
STF-SLUDGE4	4 foot TruCore sludge sampler with case	\$60.00	\$80.00	\$87.00
STF-SLUDGE4-NC	4 foot TruCore sludge sampler (case not included)	\$50.00	\$65.00	\$107.00
STF-SLUDGE8	8 foot (91" actual sampler size) TruCore sludge sampler with case	\$75.00	\$100.00	\$133.00
STF-SLUDGE4x2	(Two Piece) 8 foot TruCore sludge sampler with case	\$105.00	\$140.00	\$185.00
STF-SLUDGE4x2-NC	(Two Piece) 8 foot TruCore sludge sampler (case not included)	\$85.00	\$115.00	\$150.00
STF-SLUDGE4x3	(Three Piece) 12 foot TruCore sludge sampler with case	\$141.00	\$189.00	\$252.00
STF-SLUDGE4x3-NC	(Three Piece) 12 foot TruCore sludge sampler (case not included)	\$121.00	\$164.00	\$217.00
STF-SLUDGE4x4-NC	(Four Piece) 16 foot TruCore sludge sampler (case not included)	\$157.00	\$215.00	\$287.00
STF-SLUDGEEXT	TruCore extension kit to add up to 8 feet	\$12.00	\$15.00	\$20.00
STF-TCCB	TruCore Cleaning Brush	\$17.00	\$23.00	\$31.00
STF-TCP2	TruCore Sludge Sampler 2' replacement Cord/Plug Assembly	\$8.00	\$11.00	\$15.00
STF-TCP4	TruCore Sludge Sampler 4' replacement Cord/Plug Assembly	\$8.50	\$11.50	\$15.50
STF-TCP8	TruCore Sludge Sampler 8' replacement Cord/Plug Assembly	\$9.00	\$12.00	\$16.00
STF-TCP12	TruCore Sludge Sampler 12' replacement Cord/Plug Assembly	\$10.00	\$13.00	\$17.00
STF-TCP16	TruCore Sludge Sampler 16' replacement Cord/Plug Assembly	\$11.00	\$14.00	\$18.00

The No-Vault Pump Filter

Sim/Tech Filter has developed the No-Vault pump filter to protect turbine pump intake screens located in pump chambers. Filtration is achieved through a 6" diameter PVC screen with 1/16" diameter perforations. The shorter model has 139 square inches of open area, while the tallest model has 325 square inches of open area. Typically the intake of a turbine pump is less than 4 square inches of open area. With 35 to 80 times the open area of the intake screen, the No-Vault reduces the frequency of screen cleaning. The interior sealing sleeve allows the No-Vault to adjust to different pipe heights. The smallest unit handles pumps up to 25-1/2" tall, while the largest unit handles pumps up to 49-1/2" tall. This simple but effective unit is easily installed in

Cut-Away View



- 41% open area (139 square inches of open area on the 6" x 18" screen model)
- Fits most turbine pumps (also known as deep well pumps)
- Adds only 1/4" of height to pump making it easy to retrofit to existing systems
- Has 3" sludge shield at the bottom of the filter
- Disassembles for thorough cleaning if needed
- Easy to clean surface
- Made of PVC plastic so will not corrode
- Self adjusting seal
- Very light in weight so it does not make pump insertion or removal difficult

Replace x.xx with discharge pipe size when ordering

No-Vault Pump Filter			<i>Dist.</i>	<i>Whole.</i>	<i>Retail</i>	
STF-NV06-18-x.xx	6" dia. x 18" screen	No-Vault pump filter for turbine pumps with PVC screen	4	\$76.00	\$96.00	\$128.00
STF-NV06-18-x.xxBP	6" dia. x 18" screen	No-Vault pump filter for turbine pumps with PVC screen & internal flow inducer	4	\$86.00	\$109.00	\$145.00
STF-NV06-18-x.xxSS	6" dia. x 18" screen	No-Vault pump filter for turbine pumps with 316L Stainless Steel Screen	4	\$91.00	\$115.00	\$153.00
STF-NV06-24-x.xx	6" dia. x 24" screen	No-Vault pump filter for turbine pumps with PVC screen	4	\$83.00	\$105.00	\$140.00
STF-NV06-24-x.xxPL	6" dia. x 24" screen	No-Vault pump filter for turbine pumps with Pleated 3/32" Screen	1	\$160.00	\$205.00	\$273.00
STF-NV06-30-x.xx	6" dia. x 30" screen	No-Vault pump filter for turbine pumps with PVC screen & internal flow inducer	4	\$104.00	\$135.00	\$180.00
STF-NV06-36-x.xx	6" dia. x 36" screen	No-Vault pump filter for turbine pumps with PVC screen & internal flow inducer	4	\$120.00	\$155.00	\$207.00
STF-NV06-42-x.xx	6" dia. x 42" screen	No-Vault pump filter for turbine pumps with PVC screen & internal flow inducer	4	\$130.00	\$170.00	\$227.00

15 x 48 Pump Screen

- 1/8" perforated polypropylene
- Built in Float Tree Bracket
- "J" Hook Wire Organizer
- High Strength construction
- Unit weighs less than 16 pounds
- Base accepts concrete for extra weight
- 2" raised bottom
- 13-1/2" Inside Diameter (larger between support rings) x 15-1/2" Outside Diameter
- Over 850 square inches of open area & Over 69,000 1/8" round holes

Custom sizes also available

Float Tree Bracket
accepts 1-1/4" or 1-1/2"
PVC pipe



"J" Hook wire organizer



Pump Screen			<i>Dist.</i>	<i>Whole.</i>	<i>Retail</i>	
STF-1548P125	Pump Screen with float tree bracket and J-Hook, 15" diameter x 48" tall x 1/8" filtration		1	\$165.00	\$220.00	\$293.00

Sludge Plow

The Sim/Tech Sludge Plow is designed for scraping and pulling sludge towards a manhole for better cleaning of the tank during pumping. 14" wide



Curved "Snow Plow" design

Sludge Plow

		<i>Dist.</i>	<i>Whole.</i>	<i>Retail</i>
STF-PLOW	Sludge Plow for scraping tank bottoms and pulling sludge towards the manhole	\$25.00	\$35.00	\$50.00



At least 2 needed, 4 are recommended.

Sure-Set Guide Corner

The Sure-Set helps to assure watertight sealing of mid-seam and sectional tanks as well as tops. They do so by guiding the tank section or top into place. This accurately lines up the seam and helps to eliminate the sections from prematurely touching and affecting the placement of sealant such as butyl ribbon.



SureSets

		<i>Dist.</i>	<i>Whole.</i>	<i>Retail</i>
STF-SURESET	Sureset guide corner (strap not included)	\$30.00	\$35.00	\$45.00

20Z Spunbond Drainfield Fabric



Drain Field Fabric

		<i>Dist.</i>	<i>Whole.</i>	<i>Retail</i>
STF-GEO2OZ-3FT	Geotextile Spunbond Fabric 2oz 3 feet by 300 feet	\$40.00	\$53.00	\$70.00
STF-GEO2OZ-4FT	Geotextile Spunbond Fabric 2oz 4 feet by 300 feet	\$54.00	\$72.00	\$92.00
STF-GEO2OZ-6FT	Geotextile Spunbond Fabric 2oz 6 feet by 300 feet	\$80.00	\$108.00	\$140.00
STF-GEO2OZ-12FT	Geotextile Spunbond Fabric 2oz 12 feet by 300 feet	\$162.00	\$216.00	\$262.00

Call for shipping cost, some pallet quantities may qualify for free shipping.
Other fabrics available upon request.