



J A N E R I K A

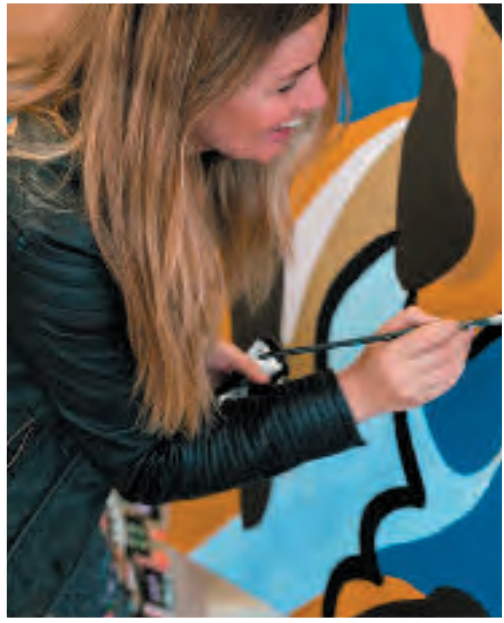
- The Earth Collection -



**MATTHEW WAILES**  
(LONDON) LTD



# Jan Erika



Jan is a multi-media artist who began painting in earnest following a long and successful career as a professional cellist and teacher of music. She credits her passion for form, pattern and colour to an idyllic childhood in Lincolnshire on the east coast of England. Today, she and her family are based in a picturesque Surrey village where again she is surrounded by gardens and nature.

At the age of twenty-one, she suffered a near-death experience when she fell from a third-floor window and broke both her legs and every bone in her face, resulting in surgery to save her life that meant rebuilding most of her body and face. It was a long process – several major operations over two years – but it served to imbue her with gratitude for every day spent alive. This joy and hope explode from her paintings with a fierce optimism that is almost tangible.

In 2018, she decided to pursue her love of art rather than return to music. Of her work she says:

*“As with music, I hear rhythm when I am painting and I see rhythms in landscapes. I often begin with a flower or plant and then let that inner music take me to another place.”*





# Matthew Wailes (London) Ltd



With more than 30 years' experience working with interior designers, decorators and architects, Matthew Wailes is renowned for designing, producing and installing the finest hand-made carpets and rugs for high-end residential and commercial clientele.

## The Collection

Matthew and his team have joined forces with esteemed artist Jan Erika in the production of his latest luxury rug collection.

Within these pages, you will discover six striking designs, carefully curated and beautifully hand-painted by the artist. With Inspiration taken from our natural environment, Jan has produced a wonderful selection of powerful works exclusively for Matthew Wailes' luxury rug design.

Aptly named **The Earth Collection**, this mesmerising journey through nature hints at the mystical and the romantic; oceans, forests, mountains and fine beasts, imagined through the beauty of brushstroke and bold use of colour.



Traditional Nepalese hand-knotted techniques are coupled with the very best quality of Himalayan wools and pure silks in the creation of these stunning designs. Produced by artisans using skills passed down through generations; yarn spinning and dyeing, weaving, washing and finishing, each process carried out meticulously by hand.

## GoodWeave

Matthew Wailes is a proud licenced partner of GoodWeave, which ensures every Nepalese carpet and rug is made by adult artisans, not children. The supply chains furnishing handmade rugs and textiles are typically long and complex – and highly susceptible to child labour, forced labour, and bonded labour. Increasingly, governments around the globe are adopting meaningful laws designed to enforce transparency and prohibit child labour. GoodWeave is the only organisation that reaches the hidden levels of the supply chain, and the only one with a proven approach to ending and preventing the human exploitation.

*Giving children choices  
for a better future.*

<https://goodweave.org>





JAN ERIKA

- The Earth Collection -





# *Seaweed Lovers*

Warm water ebbing, flowing and swirling the emotions. Swaying seaweed strands intertwine in this intimate representation of attraction, desire and loving bonds.







JAN ERIKA

- The Earth Collection -





# *Goldie*

A golden mane and ebony comb; the king of beasts is tamed with the most gentle touch of a loving hand.







JAN ERIKA  
- The Earth Collection -





# *Iris Wood*

Scented blooms and woodland tranquillity stimulate the senses. Scandi chic tones and bold lines hold the gaze.







JAN ERIKA  
- The Earth Collection -





# *Navajo*

A design for the brave and the bold; embracing both spiritual and natural worlds with strength, love, compassion and harmony.







JAN ERIKA  
- The Earth Collection -





# *Sky Jelly*

A mesmerising jellyfish pulses and glides with delicate grace, as if floating among the clouds. Trailing tentacles capture the imagination, pulling us into dreamlike dimensions.







JAN EPIVA  
- The Earth Collection -





# *Blue Canyon*

Follow the meandering path through the Blue Canyon. A beautiful, narrow, deep valley, snow and ice, meltwater, dark caverns and reflections from a stormy late summer sky cutting through the earth's terrain.







**MATTHEW WAILES**  
**(LONDON) LTD**

**THE FINEST HANDMADE  
RUGS & CARPETS**

Tel: **020 7349 7168**  
[info@matthewwailes.com](mailto:info@matthewwailes.com)

Unit 0.05 (Ground Floor)  
Worlds End Studios  
132-134 Lots Road, Chelsea  
London SW10 0RJ

[www.matthewwailes.com](http://www.matthewwailes.com)