

JULIETTE BYRNE
LONDON

The Inspired Collection

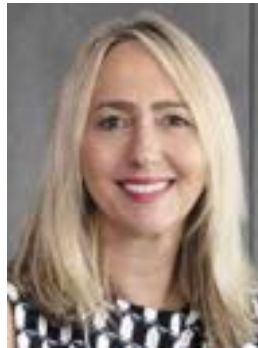
@



MATTHEW WAILES
(LONDON) LTD



Juliette Byrne



Juliette Byrne is a multi-award-winning interior design studio known for creating elegant, tailored interiors throughout the UK and Europe. Over the last 33 years, Juliette has built a vast portfolio of exclusive luxury projects ranging from Grade II listed properties and English country houses to contemporary riverside penthouses and boutique hotels. Her work has graced the covers of magazines and she has been listed in Country & Town House's *'Finest 50 Interior Designers'*, House & Garden's *'Top 100 Leading Designers in the UK'* and The Telegraph's *'Top 20 Interior Designers in Britain'*.

In recent years, Juliette has strived to promote sustainability within her design practice as an effort to combat the excessive waste that is often produced and perpetuated by the design industry. Available exclusively from Matthew Wailes (London) Ltd, **The Inspired Collection** takes inspiration from various sources like seascapes, meaningful places and quotidian life that reflect each individual within the creative team at Juliette Byrne.

"We wanted to develop a range of contemporary, stylish rugs that are practical and easy to clean without contributing to the spiralling issue of plastic pollution. Our hope is that eco-friendly upcycled rugs like our collection will become the norm someday."

Matthew Wailes (London) Ltd



With more than 30 years' experience working with interior designers, decorators and architects, Matthew Wailes is renowned for designing, producing and installing the finest handmade carpets and rugs for high-end residential and commercial clientele.

The Collection

Award-winning Juliette Byrne is widely admired for her sophisticated style of interior design and decoration; I have had the privilege of working with Juliette on numerous projects over many years. During our time together we have created many specifically tailored custom pieces which have been used to complement her beautiful interior schemes. **The Inspired Collection** is a creative progression of

unique rug designs; hand drafted by her talented team, texture and colour captured within traditional handmade craftsmanship. Sustainable wool and plant fibres combined with regenerated waste materials ensure only a small footprint is left on our natural environment during the production process. Each piece is made to order and can therefore be resized and recoloured to suit any interior scheme.





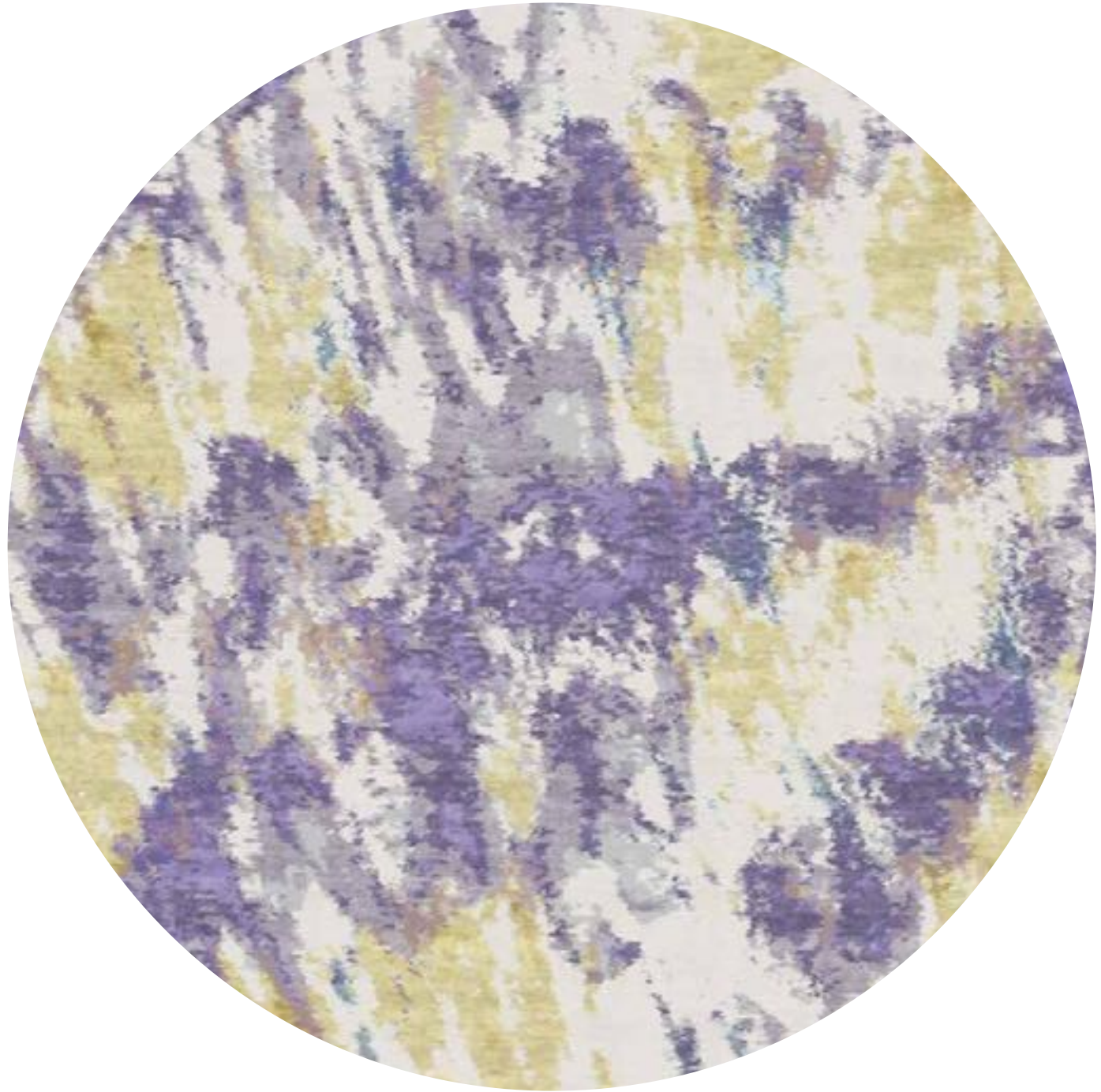
The Inspired Collection



Campo de' Fiori

The name Campo de' Fiori, meaning 'fields of flowers', dates back to the Middle Ages when the historic Roman square was a meadow. Today it is a lively historic centre packed with cafés, bars and market stalls, though we like to dream of the lavender and mimosa flowers that blossomed there once upon a time.

Designed by Katia Vargas





The Inspired Collection



Frenchman's Creek

Inspired by the countless walks along the Helford River in Cornwall over lockdown. As you head westward, flashes of bright white waves break the dazzling turquoise sea while blurred buoys reflect brilliantly on the shimmering water in the distance.

Designed by Gaby Le Friec





The Inspired Collection



Furbelows

Algae like seaweed grow abundantly below the ocean surface, forming suspended underwater “forests” that serve as the foundation of all marine life. Here they dance hypnotically in slow motion, drawing us in with their rhythmic, unending swaying.

Designed by Katia Vargas





The Inspired Collection



Hari Rempah

Meaning 'Spice Days' in Bahasa Melayu, the abstract splatter of turmeric represents the scattered spices of vibrant markets across Malaysia, where a rich mix of cultures mingle in harmony. The deep hue of golden yellow contrasts vividly against the smoky textural background, just as certain memories stand out in our recollection of the past.

Designed by Ria Hurley





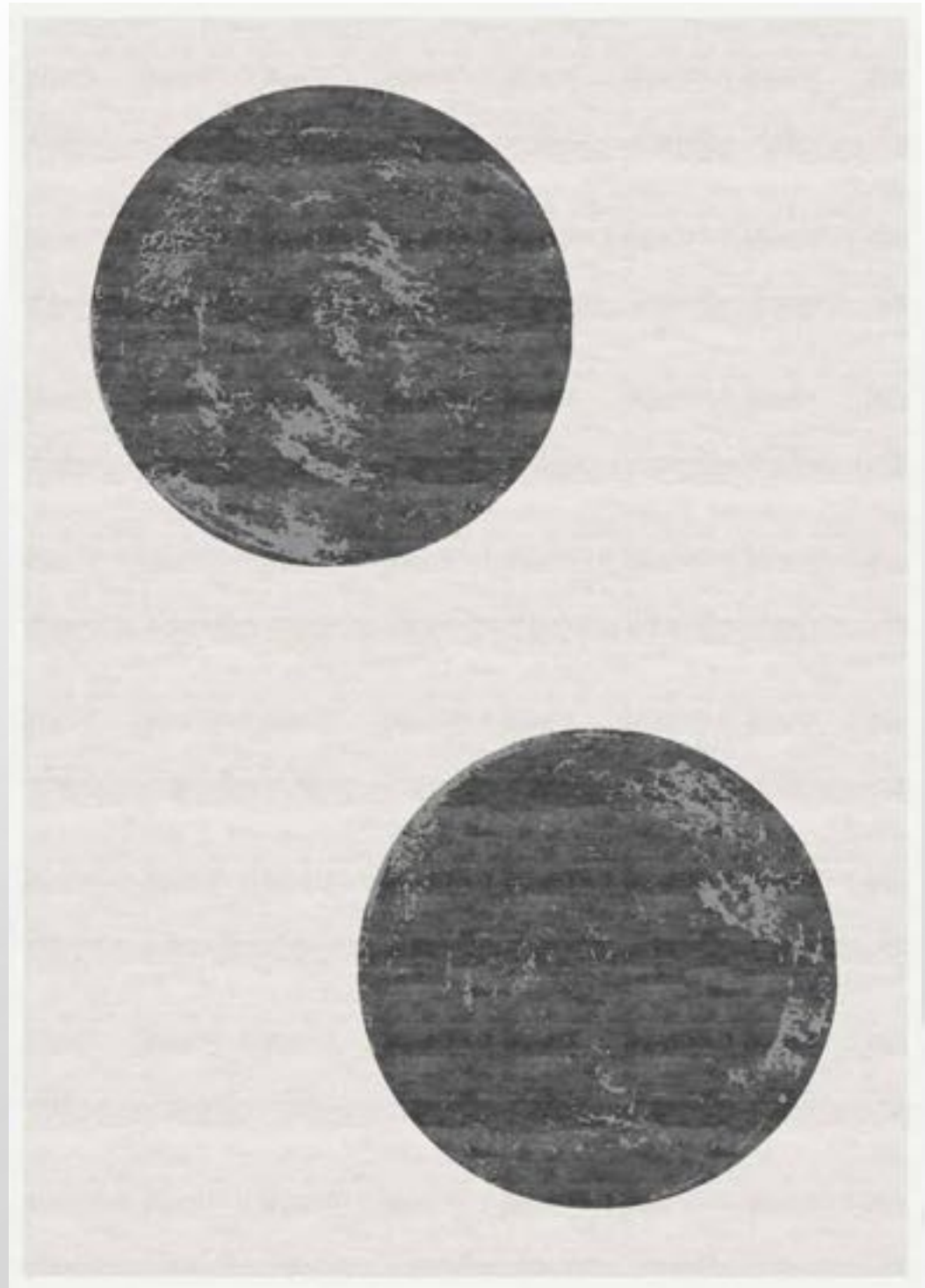
The Inspired Collection



Minty

Borrowing from the unusually large and perfectly round spots on the coat of Juliette's Jack Russell Terrier Minty, an iconic design is born. Innocently simplistic, the bold presentation of two black circles on a giant scale symbolises Minty's steadfast and fearless nature.

Designed by Michelle Au





The Inspired Collection



Pandangan

Along the tropical coast of South East Asia, there are islands where the natural phenomenon of 'Blue Tears' bloom across the ocean's surface. Caused by tiny bioluminescent plankton that emit light when disturbed, a vast and mesmerising blue glow lap the shores in the pitch-black night.

Designed by Ria Hurley





The Inspired Collection



Perelle Bay

Deep azure strokes liken to the tempestuous waves of Perelle Bay, crashing powerfully into each other before crumbling into white sea foam. Small glints of sunshine kiss the top of the ebbing tide, promising a return to calm.

Designed by Gaby Le Friec





The Inspired Collection

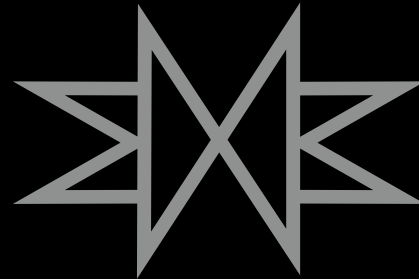


Scrunchie

Shiny to the eye and buttery smooth to the touch, is there a material more luxurious than silk? Even in the form of a humble scrunchie, silk invites tactile play and the endless tonal gradation between its satiny folds is most spectacularly revealed when shone under the light.

Designed by Michelle Au





MATTHEW WAILES
(LONDON) LTD

**THE FINEST HANDMADE
RUGS & CARPETS**

Tel: **020 7349 7168**

info@matthewwailes.com

Studio 0.03 (Ground Floor)

Worlds End Studios

132-134 Lots Road, Chelsea

London SW10 0RJ

www.matthewwailes.com