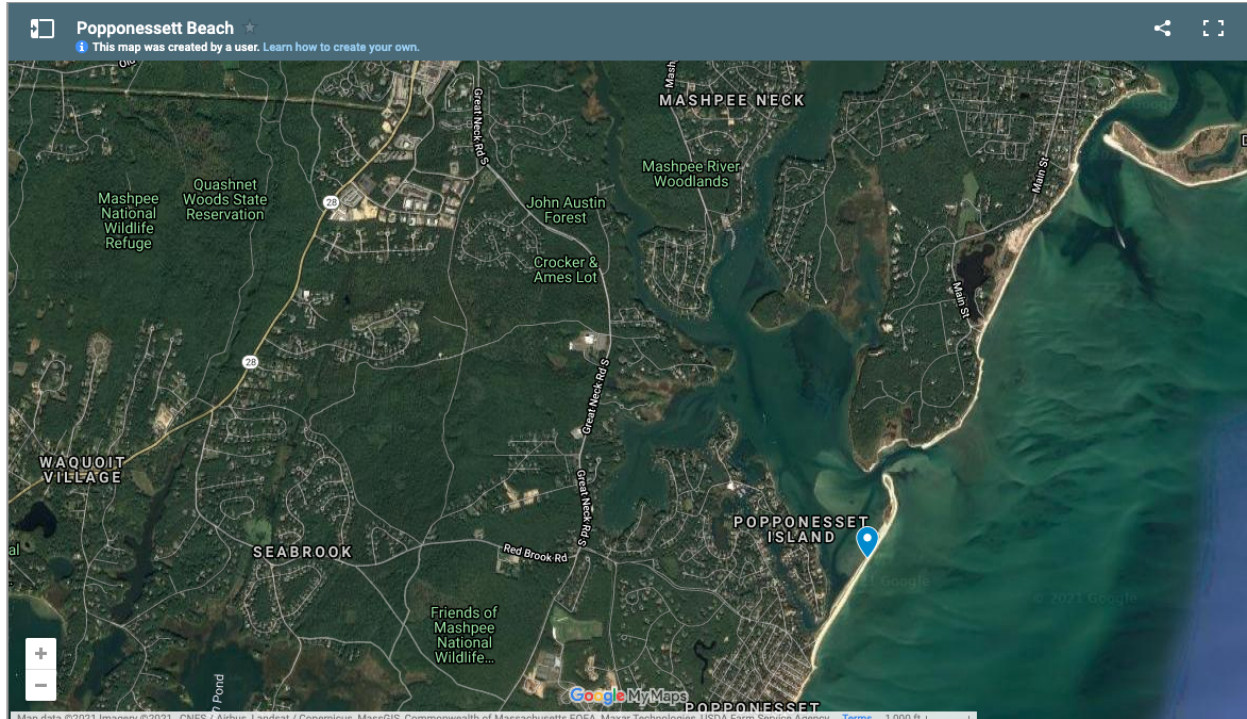


Incredible beaches at the Spit ! Shallow, warm water with a gentle slope.
Bring your cooler and pack a lunch. (dog are banned, sorry)



Our home is a short power boat ride from The Spit and a easy kayak ride if you are going with the tide. A person in appropriate physical condition should have no issues. If you have chosen to rent the pedal kayak, the trip is very quick. Be aware of fast moving watercraft in the center of the Bay. It is best to go along the shoreline.

To the east of South Cape Beach the shoreline becomes Popponesett Beach. A series of small jetties line the beach and fishing around any of them may yield bass or bluefish. For generations, Poppy has been known as the premier early season spot for the first stripers and bluefish of the year. The water for a mile off the beach is quite shallow and warms quickly, which is why this seems to be the place those fish show first. Farther east along the beach is Popponesett Spit, a long sandy extension that marks the end of Popponesett Bay. Walking to the end of the spit is worth the effort as a strong rip develops here during an outgoing tide and a 10-inch Hogy drifted out here can yield trophy size bass in the fall. The bay is a popular spot for fishing by boat or kayak. With the amount of boat traffic that passes through the narrow opening to the bay at the end of the spit, fishing well after dark or pre-dawn are best bets.

<http://www.capecodbeachsand.com/Cape-Cod-Beaches/Public-Access-Beach/View/BeachID/100/Popponesett-Spit>

<http://www.coastalneighborhoods.com/blog/popponesett-spit-beauty-abounds.html>

Incredible beaches at the Spit ! Shallow, warm water with a gentle slope.
Bring your cooler and pack a lunch. (dog are banned, sorry)

<http://www.capecodbeachsand.com/Cape-Cod-Beaches/Public-Access-Beach/View/BeachID/100/Popponeset-Spit>

<https://www.coastalneighborhoods.com/blog/popponeset-spit-beauty-abounds.html>